

ARCHITECT:  
**N45 ARCHITECTURE INC**  
 71 BANK STREET, 7TH FLOOR  
 OTTAWA, ONTARIO, K1P 5N2  
 613.224.0095  
 VLADMIRP@N45.CA

LANDSCAPE ARCHITECT:  
**RUHLAND & ASSOCIATES LTD.**  
 200-1750 COURTWOOD CRESCENT  
 OTTAWA, ONTARIO, K2C 3S5  
 613.224.4744  
 MRUHLAND@RALA.CA

CIVIL ENGINEER:  
**JP2G CONSULTANTS INC.**  
 1155 MORRISON DRIVE, SUITE 410  
 OTTAWA, ONTARIO, K2H 8S9  
 613.828.7800  
 ZACH.BALAMAN@JP2G.COM

MECHANICAL & ELECTRICAL ENGINEER:  
**GOODEY, WEEDMARK & ASSOCIATES LTD.**  
 1688 WOODWARD DRIVE  
 OTTAWA, ONTARIO, K2C 3R8  
 613.727.5111 X209  
 RAJ.V@GVAL.COM

LAND SURVEYOR:  
**ANNIS, O'SULLIVAN, VOLLEBEKK LTD**  
 14 CONCORSE GATE, SUITE 500  
 OTTAWA, ONTARIO, K2E 7S6  
 613.727.0850  
 NEPEAN@AOV.LTD.COM

GEOTECHNICAL ENGINEER & ENVIRONMENTAL:  
**EXP SERVICES INC.**  
 100-2650 QUEENSWAY DRIVE  
 OTTAWA, ONTARIO, K2B 8H6  
 613.888.1899 X63242  
 ISMAIL.TAK@EXP.COM

TRAFFIC ENGINEER:  
**ROBINSON CONSULTANTS**  
 210-350 PALLADIUM DRIVE  
 OTTAWA, ONTARIO, K2V 1A8  
 613.592.6060  
 AHOWELL@RCI.COM

05	ISSUED FOR SPC	14 JAN 26
04	ISSUED FOR 80% REVIEW	08 JAN 26
03	ISSUED FOR 66% REVIEW	01 DEC 25
02	ISSUED FOR SPC APPLICATION	15 OCT 25
01	33% CLIENT REVIEW	19 SEP 25
no.	revision	date

**N45 ARCHITECTURE INC.**  
 71 Bank Street, 7th Floor - Ottawa, Ontario, K1P 5N2  
 tel. 613.224.0095 fax 613.224.9811

FERNBANK CATHOLIC HIGH SCHOOL

5431 FERNBANK ROAD  
 OTTAWA, ONTARIO  
 K2S 0T7

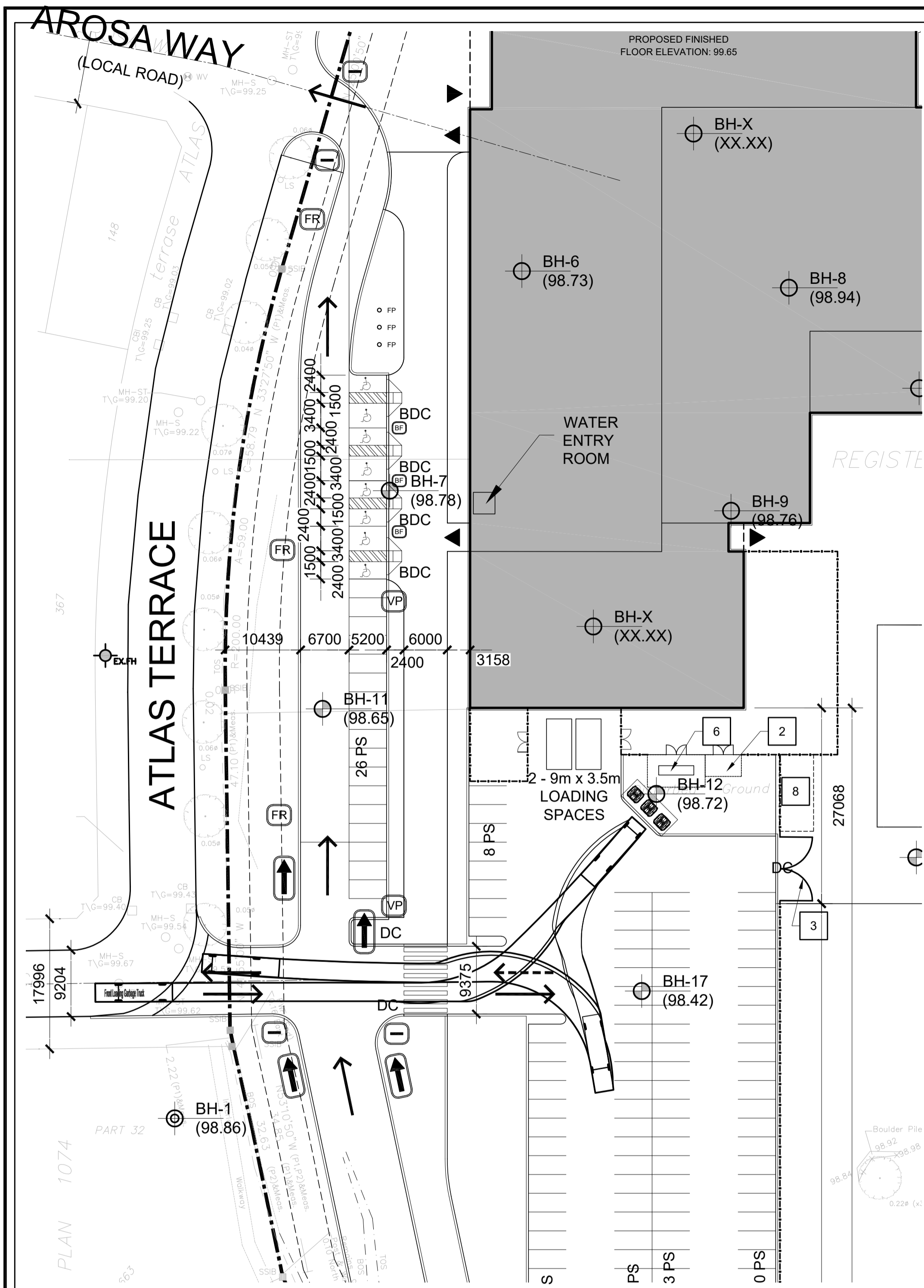
PROJECT NORTH

seal  
**ONTARIO ASSOCIATION OF ARCHITECTS**  
 VLADIMIR POPOVIC  
 LICENCE 5918

drawing title  
**SITE PLAN DETAIL**

scale AS NOTED	drawn by X.X.
date JAN. 2026	checked by V.P.
project number <b>24-835</b>	drawing number <b>A002</b>
CONTRACTOR TO VERIFY ALL DIMENSIONS AND NOTIFY THE ARCHITECT OF ANY DISCREPANCIES BEFORE WORK COMMENCES.	
DO NOT SCALE DRAWINGS	

D07-12-25-0141

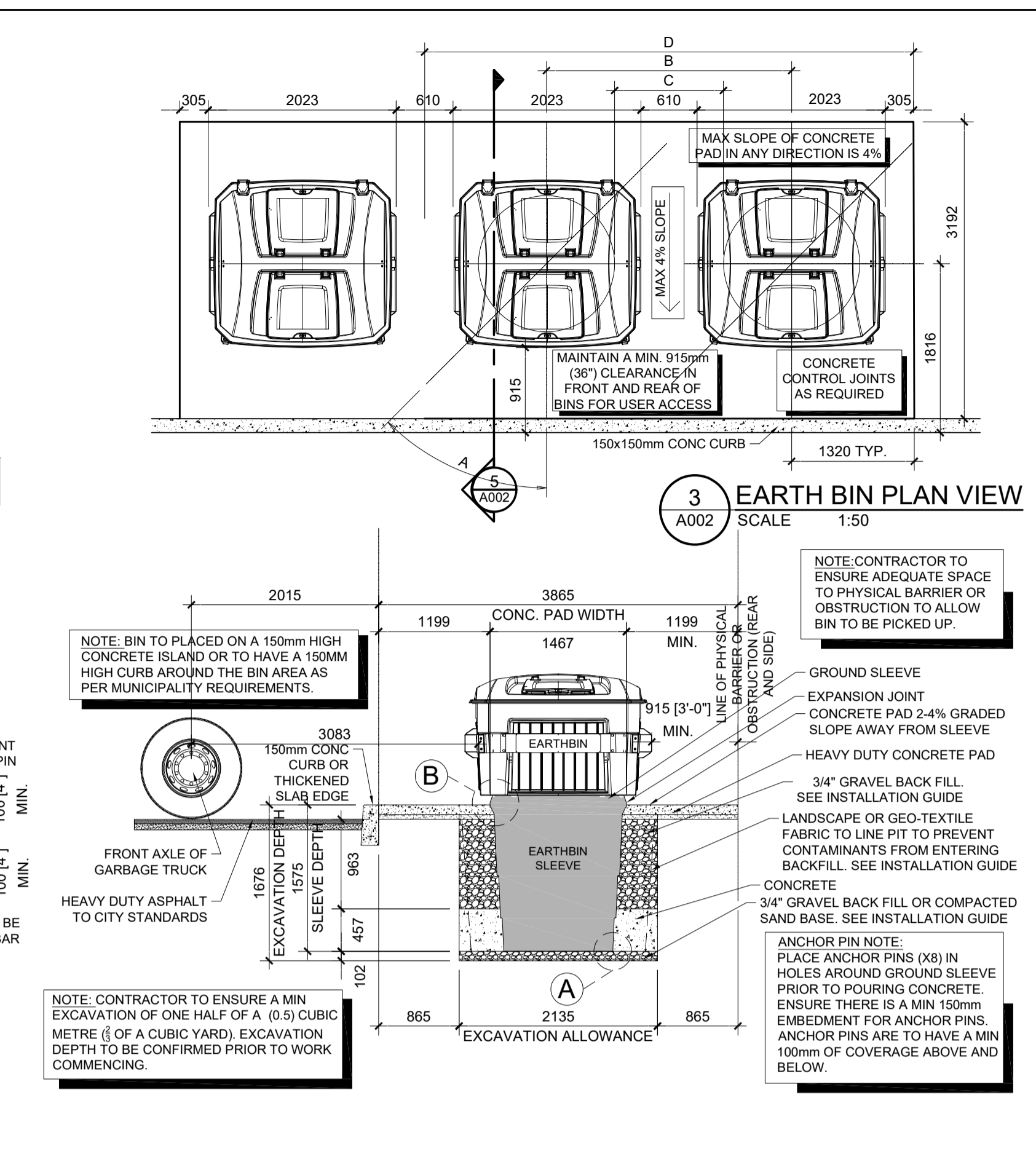
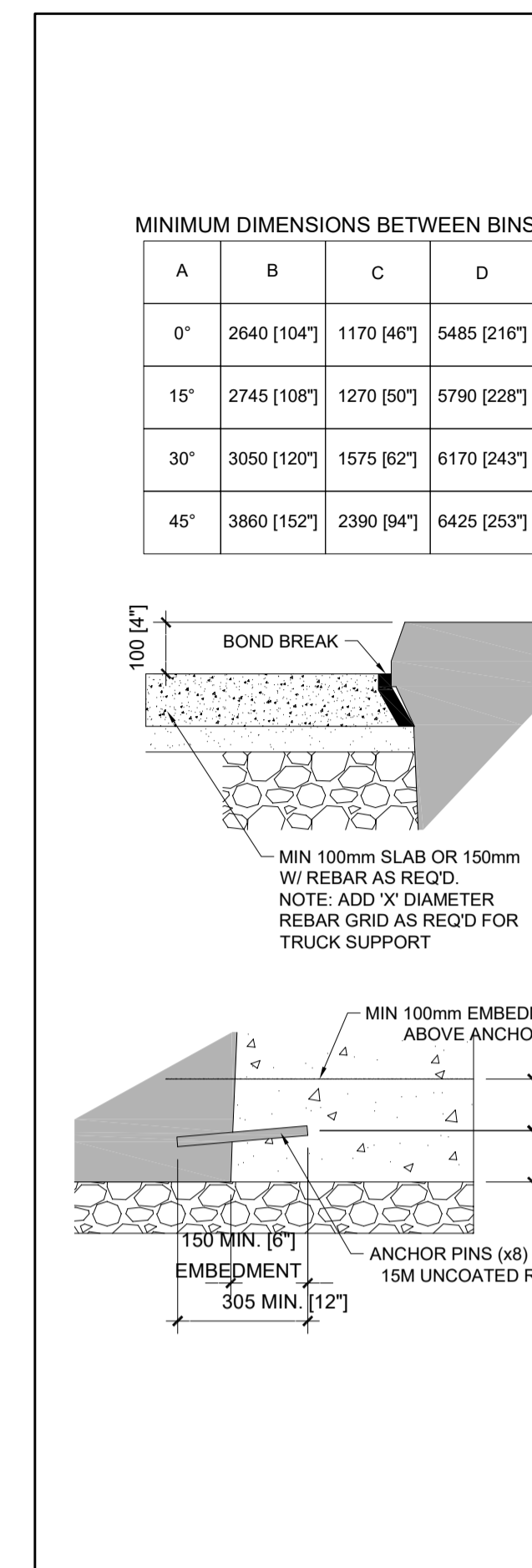
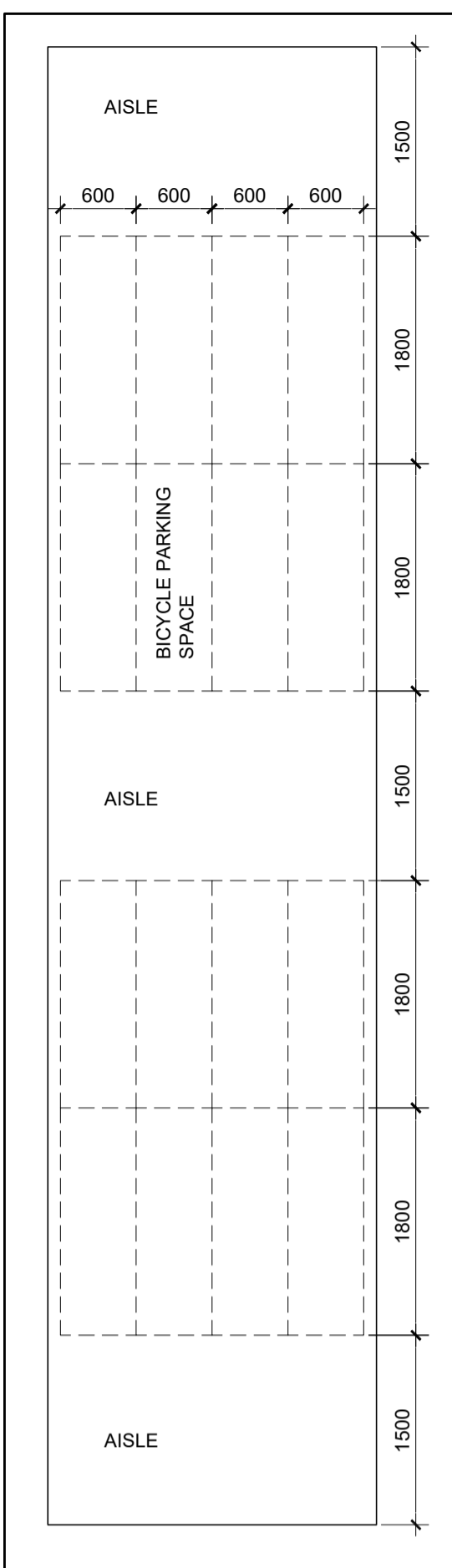


**1 GARBAGE TRUCK TURNING MANOUVER**  
 SCALE 1:450

*Allison Hamlin*

**ALLISON HAMLIN**  
 MANAGER, DEVELOPMENT REVIEW ALL WARDS  
 PLANNING, DEVELOPMENT & BUILDING SERVICES  
 DEPARTMENT, CITY OF OTTAWA

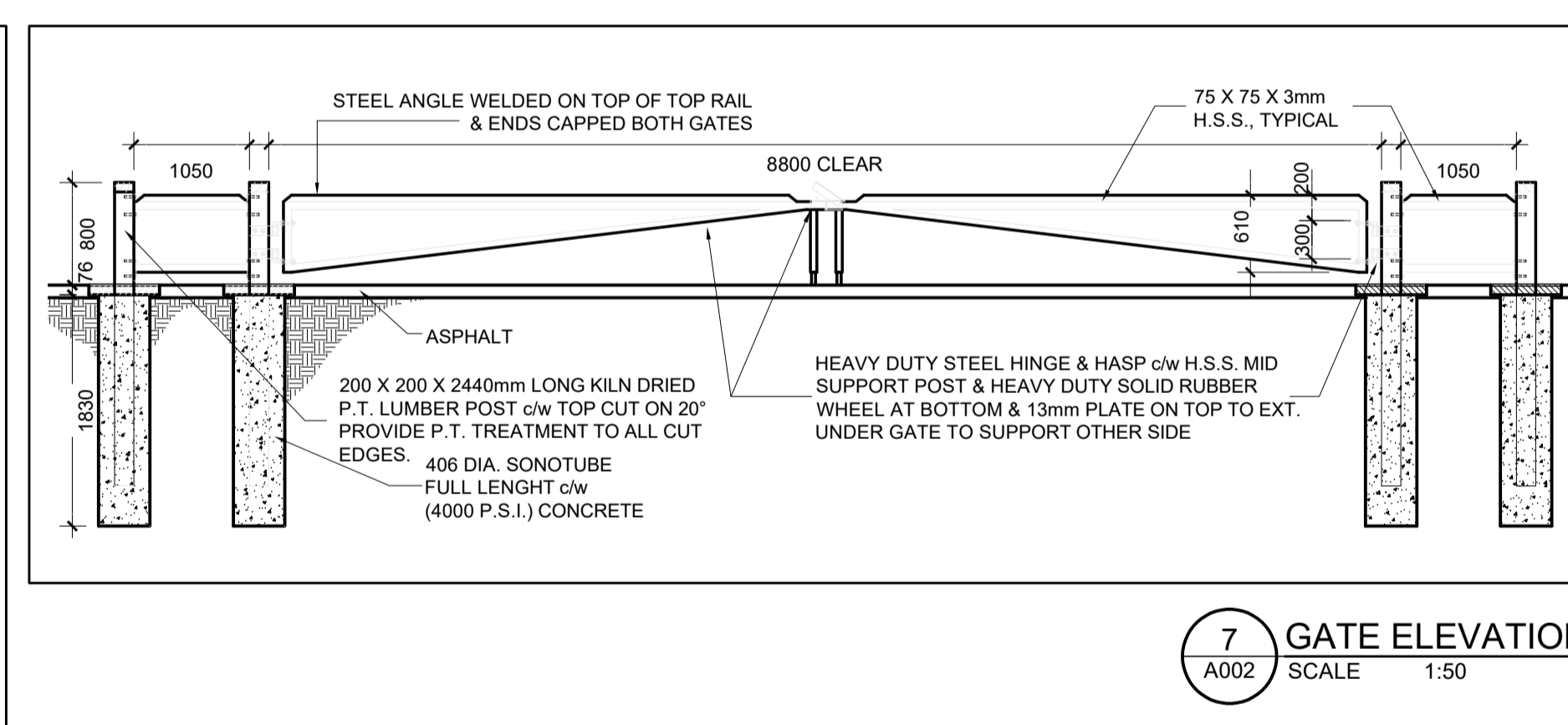
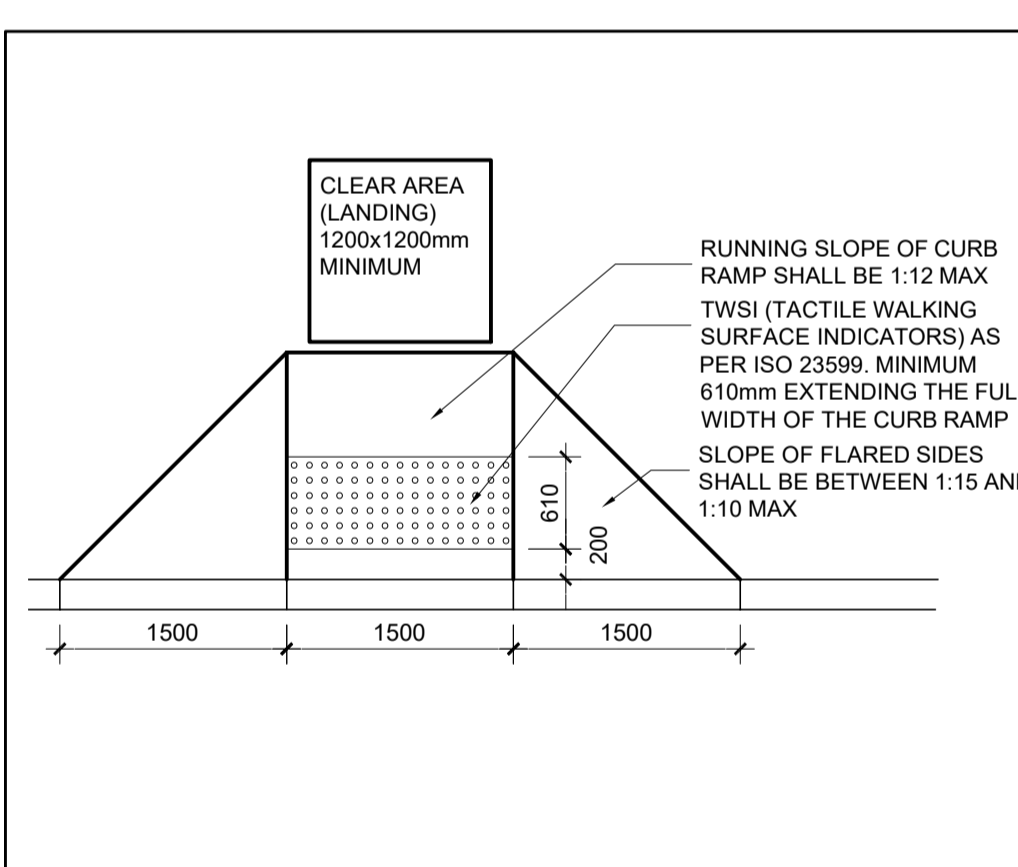
**APPROVED**  
 By Allison Hamlin at 9:36 am, Mar 11, 2026



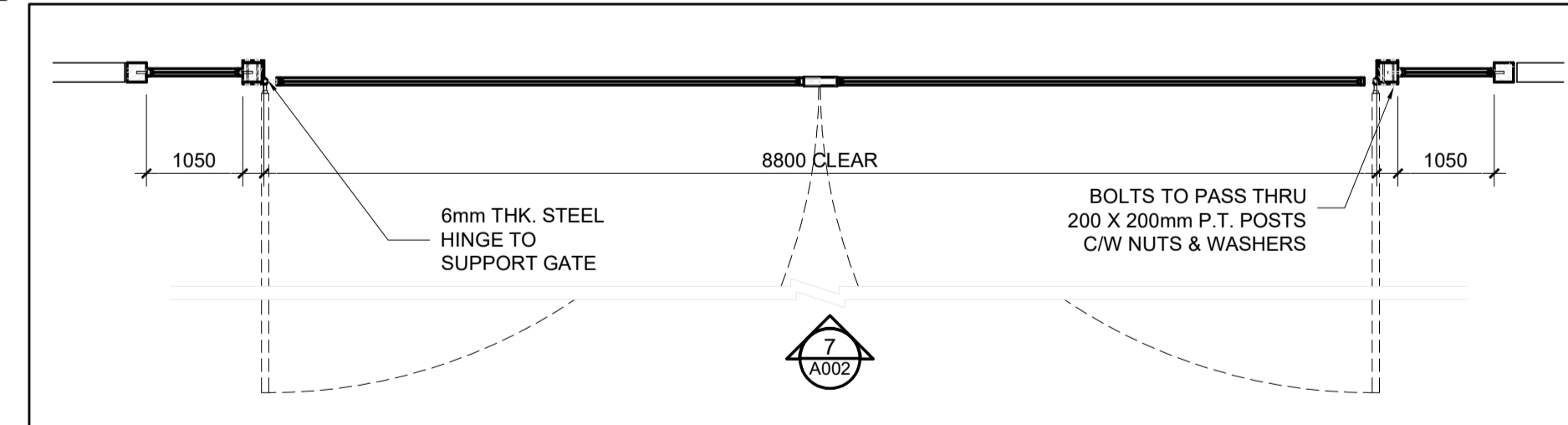
**2 BIKE PARKING (TYP)**  
 SCALE 1:50

**4 EARTH BIN DETAILS**  
 SCALE NTS

**5 EARTH BIN SECTION**  
 SCALE 1:50



**6 BARRIER-FREE DEPRESSED CURB DETAIL**  
 SCALE 1:50



**6 BARRIER-FREE DEPRESSED CURB DETAIL**  
 SCALE 1:50

**8 GATE PLAN DETAIL**  
 SCALE 1:50