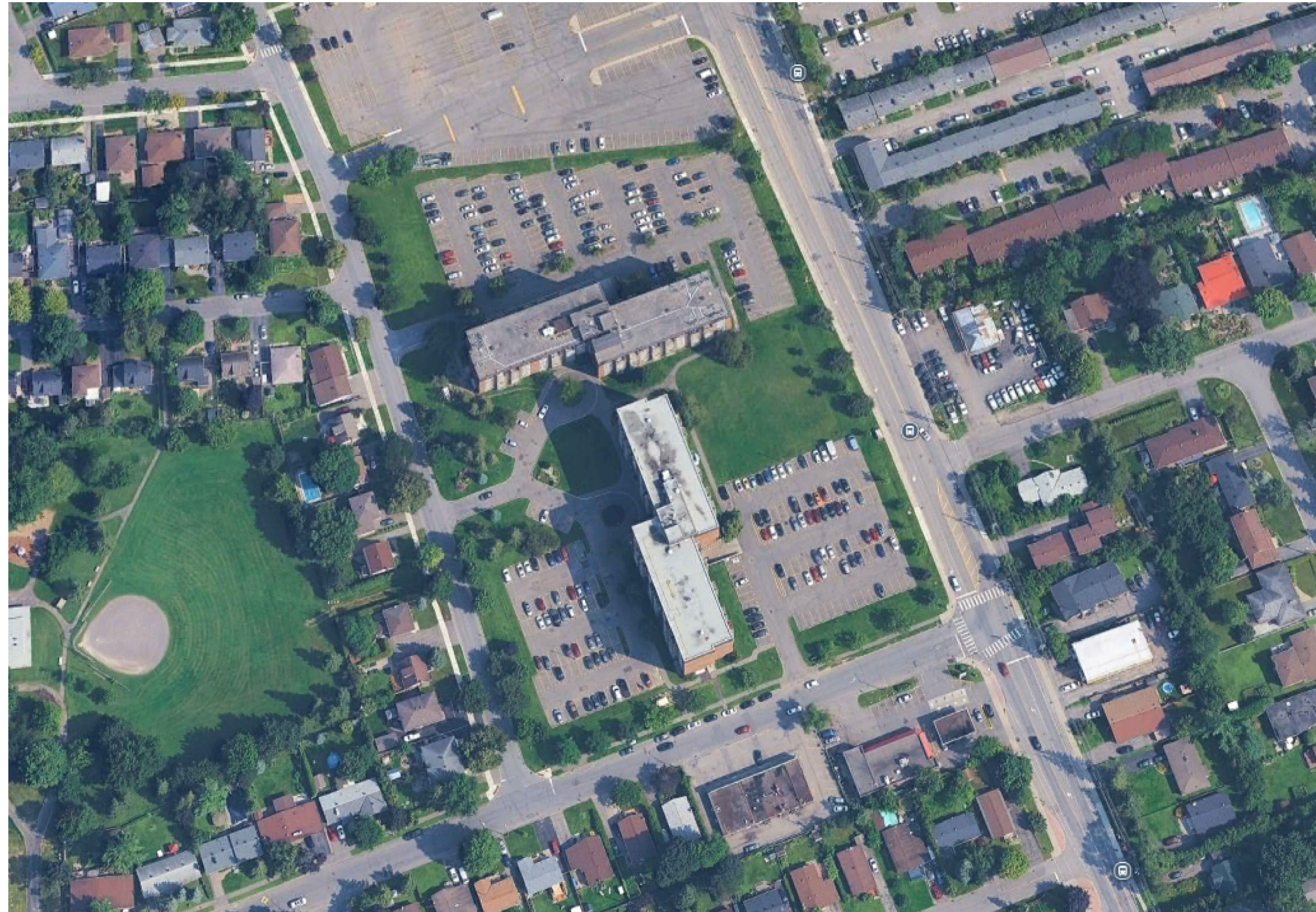


RESIDENTIAL DEVELOPMENT OSGOODE STACKS

Ottawa, Ontario



OSGOODE PROPERTIES



8395 JANE STREET, SUITE 202. VAUGHAN, ONTARIO L4K 5Y2 T: 905-417-5515 F: 905-417-5517 EMAIL: INFO@SRNARCHITECTS.COM

CLIENT:
OSGOODE PROPERTIES
1284 WELLINGTON STREET WEST
K1Y 3A9
OTTAWA, ONTARIO
T. 613 729 0656

ARCHITECTS OF RECORD:
SRN ARCHITECTS INC.
8395 JANE STREET, SUITE 202
L4K 5Y2
VAUGHAN, ONTARIO
T. 905 417-5515

CIVIL ENGINEER:
EGIS- GROUP
115 WALGREEN ROAD
K0A 1L0
T. 613 714 4629
OTTAWA, ONTARIO

LANDSCAPE ARCHITECT:
STUDIO TLA
20 CHAMPLAIN BLVD, SUITE 102
M3H 2Z1
TORONTO, ONTARIO
T. 416 6384911

SURVEYOR:
FARLEY, SMITH & DENIS SURVEYING LTD.
30 COLLONADE ROAD, UNIT 275
K2E 7J6
OTTAWA, ONTARIO
T. 613 727 8226

ARCHITECTURAL DRAWING LIST

A000 COVER SHEET
A010 PLAN OF SURVEY

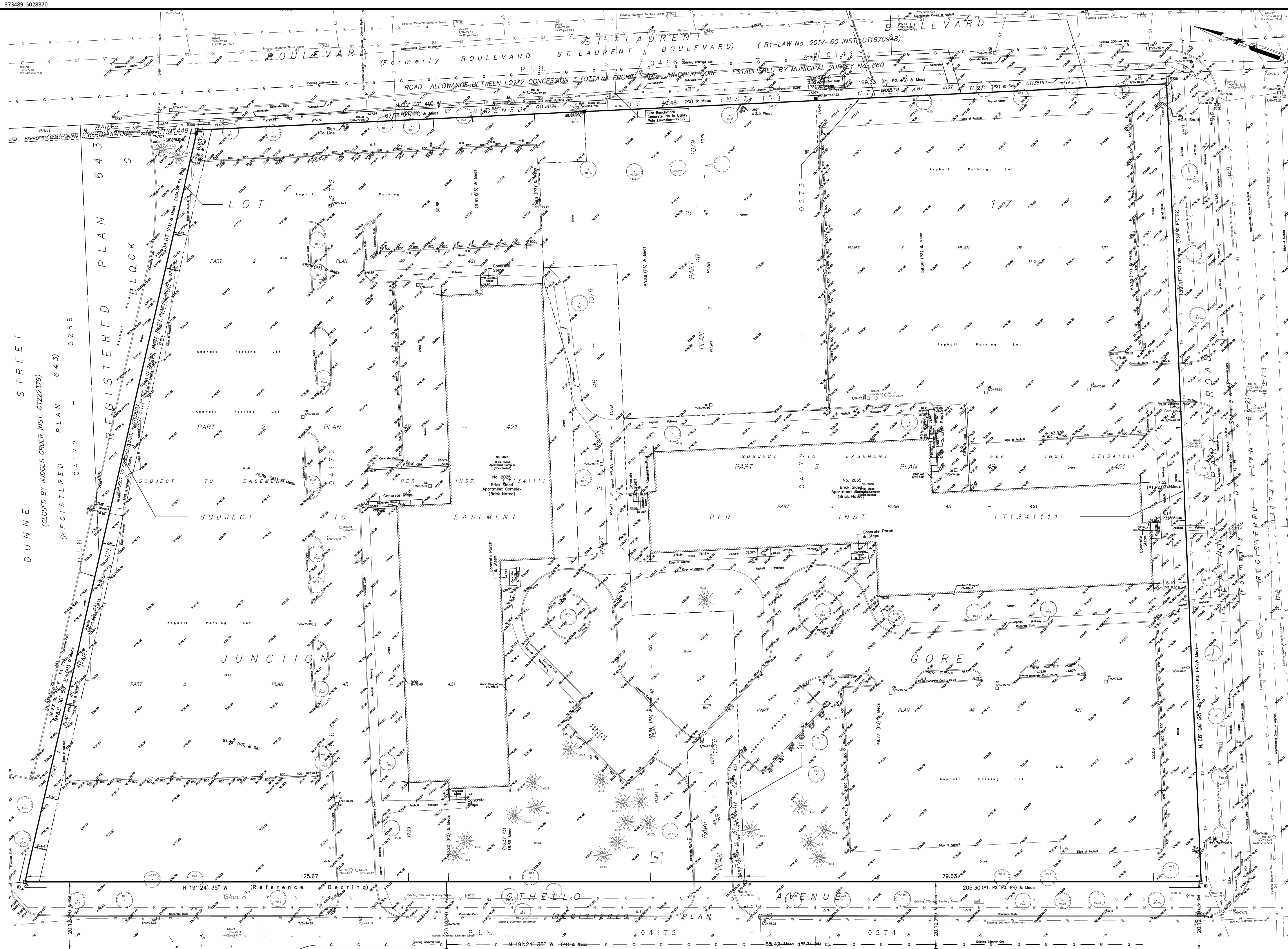
A100 SITE PLAN, ZONING CHART AND PROJECT STATISTICS
A101 SITE DETAILS
A110 OBC DATA MATRIX

A300 PRELIMINARY FLOOR PLANS

A400 BUILDING ELEVATIONS

FEBRUARY 11, 2026 RE-ISSUED FOR SPA

PLOT DATE February 11, 2026



SURVEYOR'S REAL PROPERTY REPORT
PART 1 Plan of
PART OF LOT 17
JUNCTION GORE
GEOGRAPHIC TOWNSHIP OF GLOUCESTER
CITY OF OTTAWA

FARLEY, SMITH & DENIS SURVEYING LTD. 2021
 Scale 1: 300
 0 5 10 15 20 25 30 metres

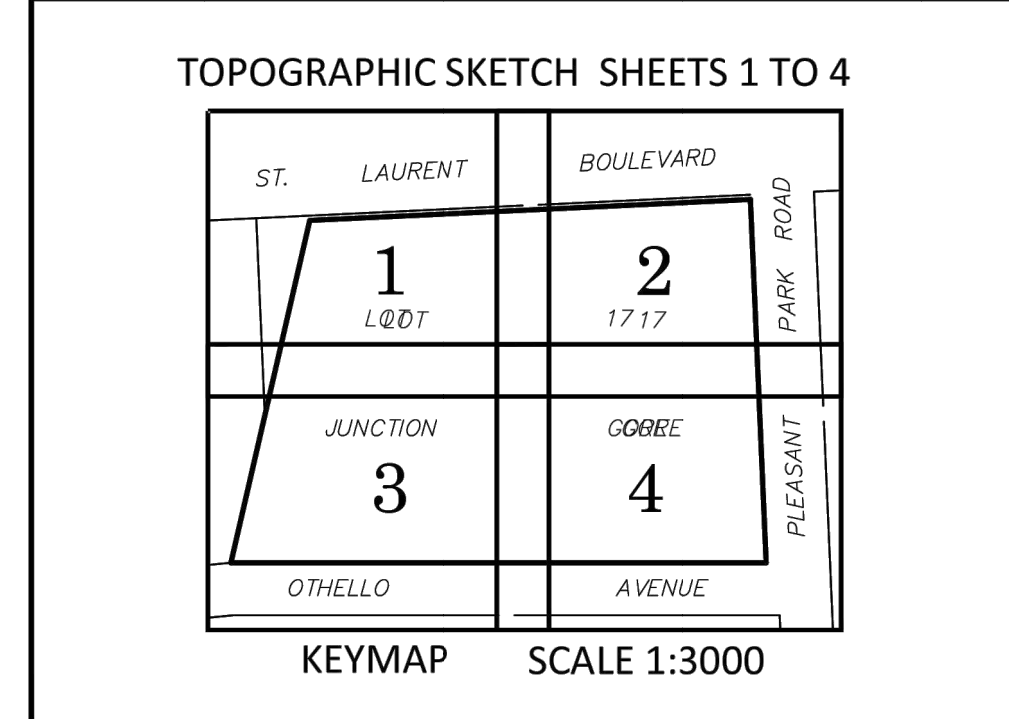
Metric Note
 Distances and coordinates on this plan are in metres and can be converted to feet by dividing by 0.3048.

Distance Note
 Distances shown on this plan are ground distances and can be converted to grid distances by multiplying by the combined scale factor of 0.99995.

Bearing Note
 Bearings hereon are grid bearings derived from the Can-Net Real Time Network and are referred to the Central Meridian of MTM Zone 9 (17°30' West Longitude) Nad-83 (Original).

For bearing comparisons, a rotation of 0°37'05" counter-clockwise was applied to bearings on P1, P2, P3.
 For bearing comparisons, a rotation of 0°36'35" counter-clockwise was applied to bearings on P4.

Boundary Note
 This Plan is to be read in conjunction with a Topographic Sketch, Sheets 1 to 4 dated September 7, 2021. (FSD Ref. 407-21)



- Notes & Legend**
- Denotes:
- Survey Monument Planted
 - Survey Monument Found
 - Standard Iron Bar
 - SSIB Short Standard Iron Bar
 - IB Iron Bar
 - (W) Witness
 - M Measured
 - (P1) Plan 4R-421
 - (P2) Plan 4R-1079
 - (P3) Plan by (1319) dated January 23, 1990 (Ref. No. J-3314)
 - (P4) Registered Plan 662
 - CRW Concrete Retaining Wall

WARNING NO PERSON MAY COPY, REPRODUCE, DISTRIBUTE OR ALTER THIS PLAN IN WHOLE OR IN PART WITHOUT THE WRITTEN PERMISSION OF FARLEY, SMITH & DENIS SURVEYING LTD.
 © FARLEY, SMITH & DENIS SURVEYING LTD., 2021.

- PART 2**
- REGISTERED RIGHTS-OF-WAY/EASEMENTS
 P.I.N. 04172-0272 is subject to easements as described by Inst. CT138193 & LT1341111.
 P.I.N. 04172-0273 is subject to easement as described by Inst. LT1341111.
 - PROPERTY IMPROVEMENTS
 Signs are displayed from the property lines by up to 0.7m.
 See plan for location.
 - COMPLIANCE WITH MUNICIPAL ZONING BYLAWS
 Compliance is not certified by this report.
 - ADDITIONAL REMARKS
 The building ties are to the surfaces noted on the plan.

THIS REPORT WAS PREPARED FOR:
 OTHELLO APARTMENTS LTD. ("The Client"), the Client's solicitors, mortgages, and other related parties. The undersigned accepts no responsibility for use by other parties. See Part 2 of this Report.

Surveyor's Certificate
 I certify that:
 1. This survey and plan are correct and in accordance with the Survey Act, the Surveyors Act and the Regulations made under them.
 2. The survey was completed on the 7th day of September, 2021.

2021-09-07
 Daniel Robinson
 Daniel Robinson
 Ontario Land Surveyor

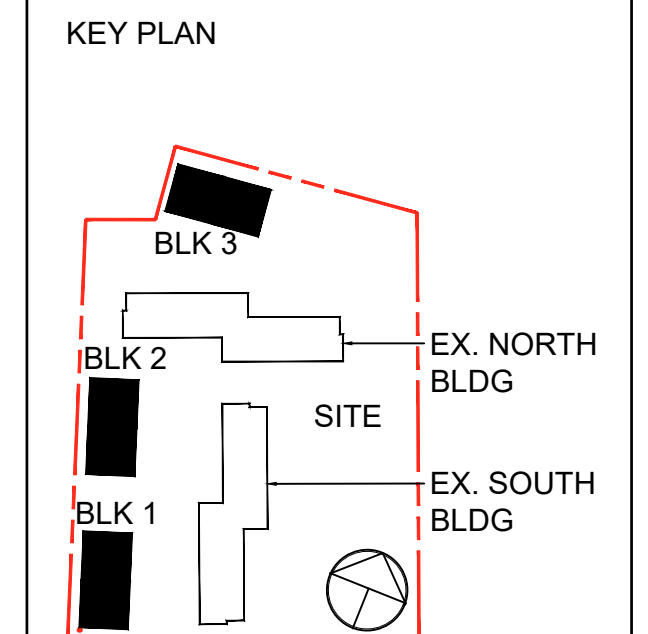
FARLEY, SMITH & DENIS SURVEYING LTD.
 ONTARIO LAND SURVEYORS
 CANADA LAND SURVEYORS
 Unit 275, 30 COLONNADE ROAD, OTTAWA, ONTARIO K2E 7J6
 TEL. (613) 727-8226 E-mail: fdsurveys@bellnet.ca

THESE DRAWINGS ARE NOT TO BE SCALED.
 ALL DIMENSIONS MUST BE VERIFIED BY CONTRACTOR PRIOR TO COMMENCEMENT OF ANY WORK. ANY DIMENSIONS MUST BE REPORTED DIRECTLY TO SRM ARCHITECTS INC. ALL ARCHITECTURAL SYMBOLS INDICATED ON THE DRAWING ARE GRAPHIC REPRESENTATIONS ONLY.

NO.	DATE	REVISED FOR
1	05 09 25	ISSUED FOR SPA
2	12 12 25	SPA RE-SUBMISSION
3	11 02 26	SPA RE-SUBMISSION

ADDITIONAL NOTES
 THE DRAWING, AS AN INSTRUMENT OF SERVICE, IS PROVIDED BY AND IS THE PROPERTY OF SRM ARCHITECTS INC. THE CONTRACTOR MUST VERIFY AND ACCEPT RESPONSIBILITY FOR ALL DIMENSIONS AND CONDITIONS ON SITE AND MUST NOTIFY SRM ARCHITECTS INC. OF ANY VARIATIONS FROM THE SUPPLIED INFORMATION. SRM ARCHITECTS INC. IS NOT RESPONSIBLE FOR THE ACCURACY OF SURVEY INFORMATION. STRUCTURAL, MECHANICAL, ELECTRICAL, ETC. ENGINEERING INFORMATION SHOWN ON THIS DRAWING NEEDS TO BE APPROVED BY AN ENGINEER BEFORE PROCEEDING WITH ANY WORK. CONSTRUCTION MUST CONFORM TO ALL APPLICABLE CODES AND REQUIREMENTS OF THE APPLICABLE MUNICIPAL JURISDICTION. UNLESS OTHERWISE NOTED, NO INVESTIGATION HAS BEEN OR REPORTED ON BY THE OFFICE REGARDING THE ENVIRONMENTAL CONDITIONS OF THE SITE.

CONDITIONS FOR ELECTRONIC INFORMATION TRANSFER
 ELECTRONIC INFORMATION IS SUPPLIED TO THE OTHER ASSOCIATED PARTS TO ASSIST THEM IN THEIR WORKS. THE RECIPIENT PARTS MUST OBTAIN THE DATA FROM THE SUPPLIER WITH THE UNDERSTANDING THAT THE INFORMATION IS PROVIDED IN RESPECT TO THEIR PARTICULAR RESPONSIBILITY.



PRELIMINARY
 NOT FOR CONSTRUCTION

NO.	DATE	REVISION COMMENT

SRM ARCHITECTS INC. SHALL NOT BE RESPONSIBLE FOR:
 1. ERRORS, OMISSIONS, INCOMPLETENESS DUE TO LOSS OF INFORMATION IN ORIGINAL OR PARTIAL INFORMATION TRANSMISSIONS.
 2. TRANSMISSIONS OF ANY FILE OR DAMAGE TO RECEIVED ELECTRONIC SYSTEM INFORMATION OR TRANSMISSIONS.

S&N ARCHITECTS
 8395 JANE STREET, SUITE 202
 VAUGHAN, ONTARIO L4K 5Y2
 PHONE: 905.417.5515 FAX: 905.417.2517

ASSOCIATION OF ONTARIO LAND SURVEYORS
 PLAN SUBMISSION FORM
 V-15575

THIS PLAN IS NOT VALID UNLESS IT IS AN EMBOSSED ORIGINAL COPY ISSUED BY THE SURVEYOR IN ACCORDANCE WITH REGULATION 1026, SECTION 29 (3)

CLIENT: **OSGOODE PROPERTIES**
 1284 Wellington Street West, Ottawa, Ont.
 Tel: 613-729-0656

PROJECT: **OSGOODE STACKS**
 2025 OTHELLO AVE.
 OTTAWA, ONTARIO

DRAWING TITLE: **PLAN OF SURVEY**

DATE: 2025.06.26 SCALE: AS INDICATED

DRAWN BY: - CHECKED BY: BK

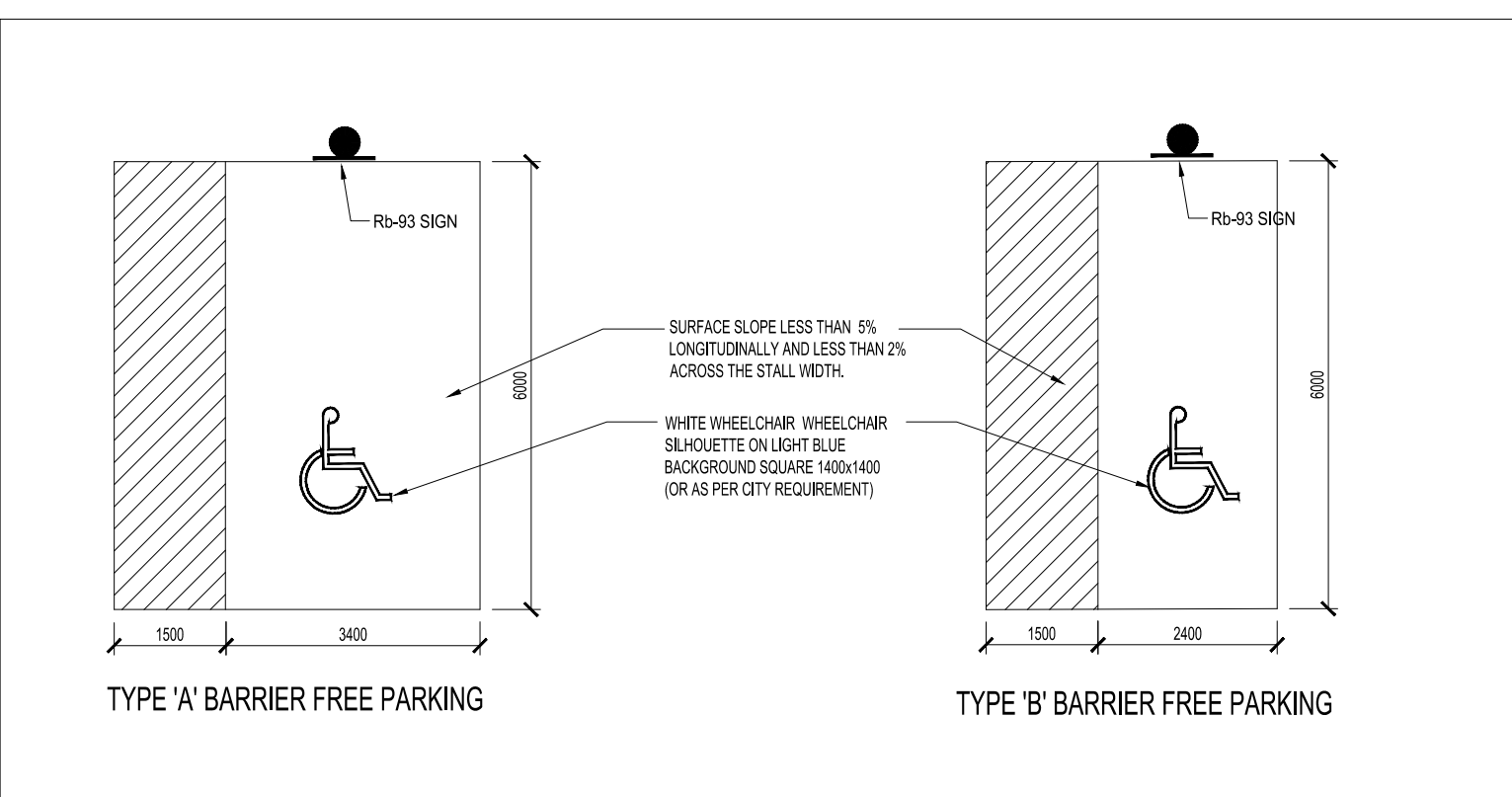
PROJECT NUMBER: **S24016** DRAWING NUMBER: **A010**

THESE DRAWINGS ARE NOT TO BE SCALED.
ALL DIMENSIONS MUST BE VERIFIED BY CONTRACTOR PRIOR TO COMMENCEMENT OF ANY WORK. ANY DISCREPANCIES MUST BE REPORTED IMMEDIATELY TO SRN ARCHITECTS INC. ALL ARCHITECTURAL SYMBOLS INDICATED ON THE DRAWING ARE GRAPHIC REPRESENTATIONS ONLY.

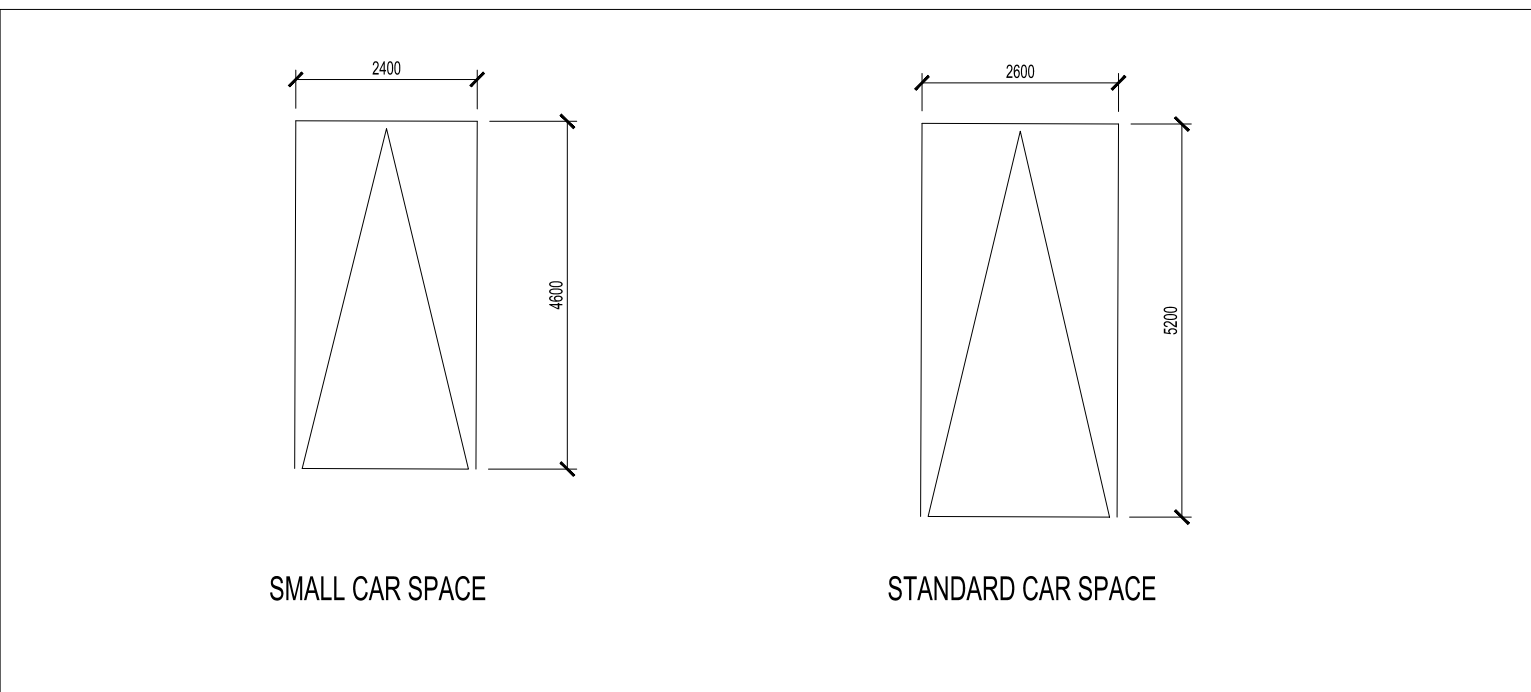
NO.	DATE	ISSUED FOR
1	05 09 25	ISSUED FOR SPA
2	12 12 25	SPA RE-SUBMISSION
3	11 02 26	SPA RE-SUBMISSION

ADDITIONAL NOTES:
THE DRAWING, AS AN INSTRUMENT OF SERVICE, IS PROVIDED BY AND IS THE PROPERTY OF SRN ARCHITECTS INC. THE CONTRACTOR MUST BEAR AND ACCEPT RESPONSIBILITY FOR ALL DIMENSIONS AND CONDITIONS ON SITE AND MUST NOTIFY SRN ARCHITECTS INC. OF ANY VARIATIONS FROM THE SUPPLIED INFORMATION. SRN ARCHITECTS INC. IS NOT RESPONSIBLE FOR THE ACCURACY OF SURVEY, STRUCTURAL, MECHANICAL, ELECTRICAL, ETC. ENGINEERING INFORMATION SHOWN ON THIS DRAWING. REFS TO APPROPRIATE ENGINEERING DRAWINGS BEFORE PROCEEDING WITH ANY WORK. CONSTRUCTION MUST CONFORM TO ALL APPLICABLE CODES AND REQUIREMENTS OF THE APPLICABLE ENGINEERING JURISDICTION. UNDERTAKEN OTHERWISE NOTED, NO INVESTIGATION HAS BEEN OR REPORTED ON BY THE OFFICE IN REGARDS TO THE ENVIRONMENTAL CONDITIONS OF THIS SITE.

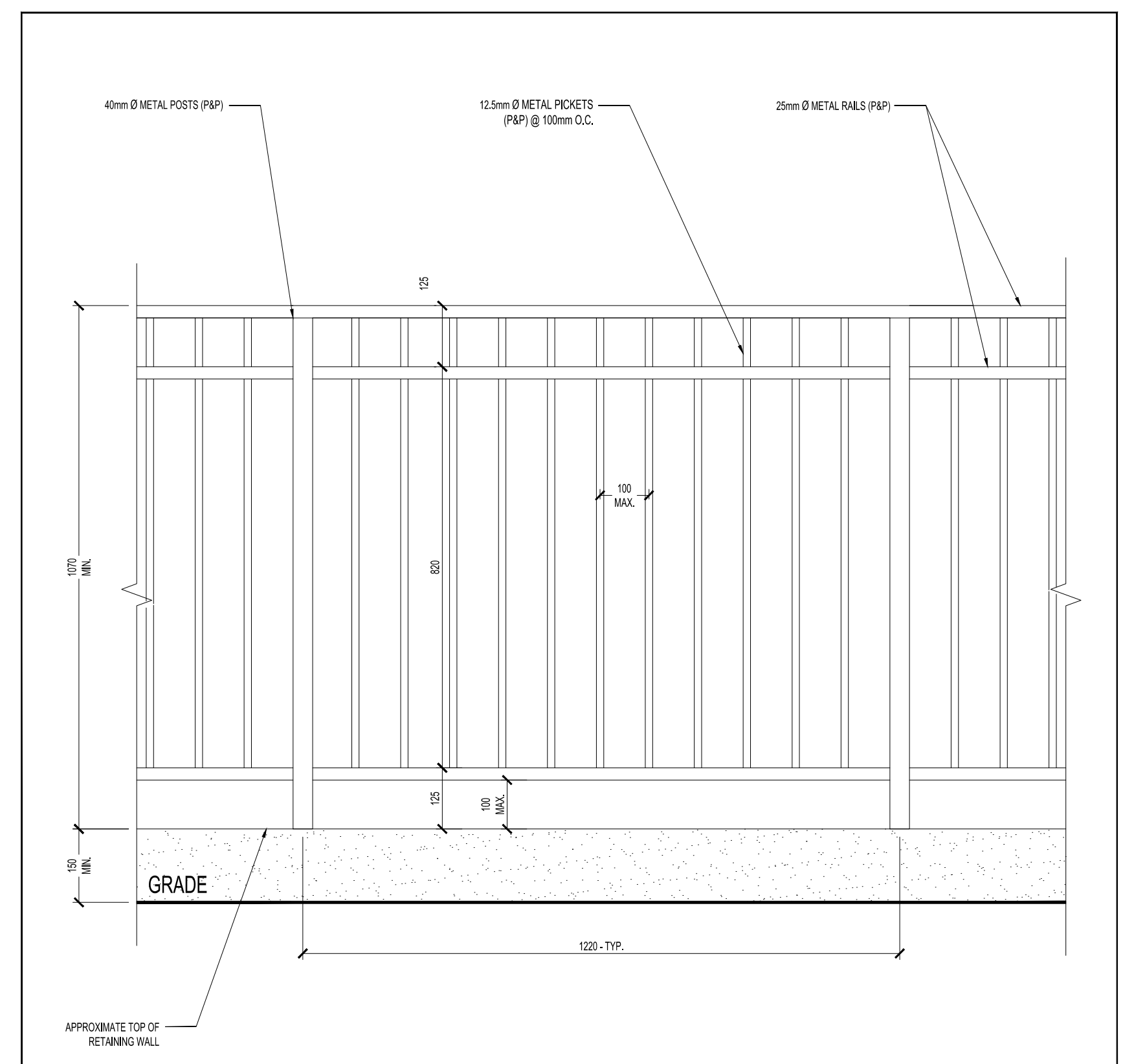
CONDITIONS FOR ELECTRONIC INFORMATION TRANSFER:
ELECTRONIC INFORMATION IS SUPPLIED TO THE OTHER ASSOCIATED FIRMS TO ASSIST THEM IN THE EXECUTION OF THEIR WORK. THE RECIPIENT FIRMS MUST DETERMINE THE QUALITY AND RELIABILITY OF THE INFORMATION IN RESPECT TO THEIR PARTICULAR RESPONSIBILITY.



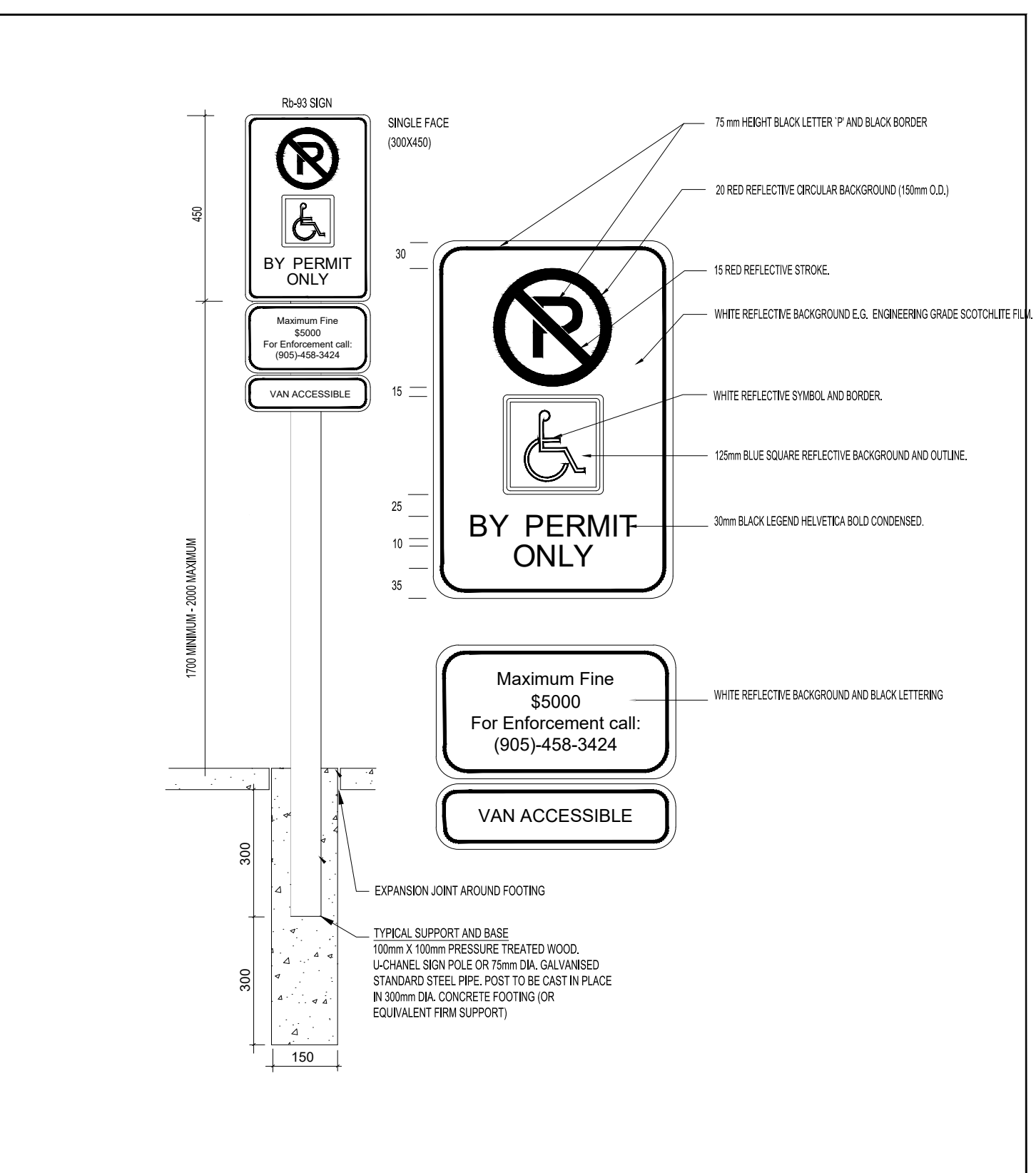
14 ACCESSIBLE PARKING STALLS
SCALE: NTS



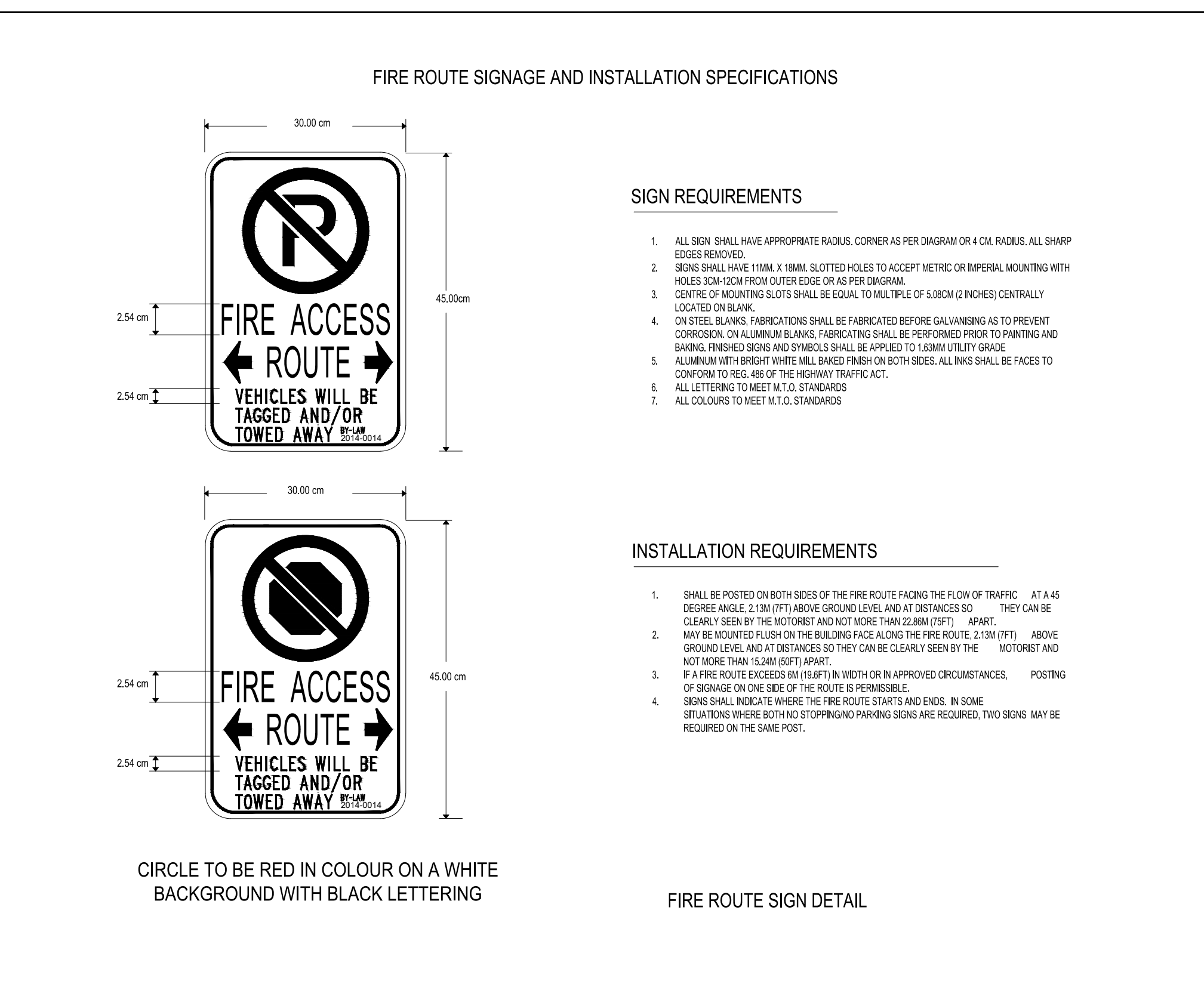
13 PARKING STALLS DIMENSIONS
SCALE: NTS



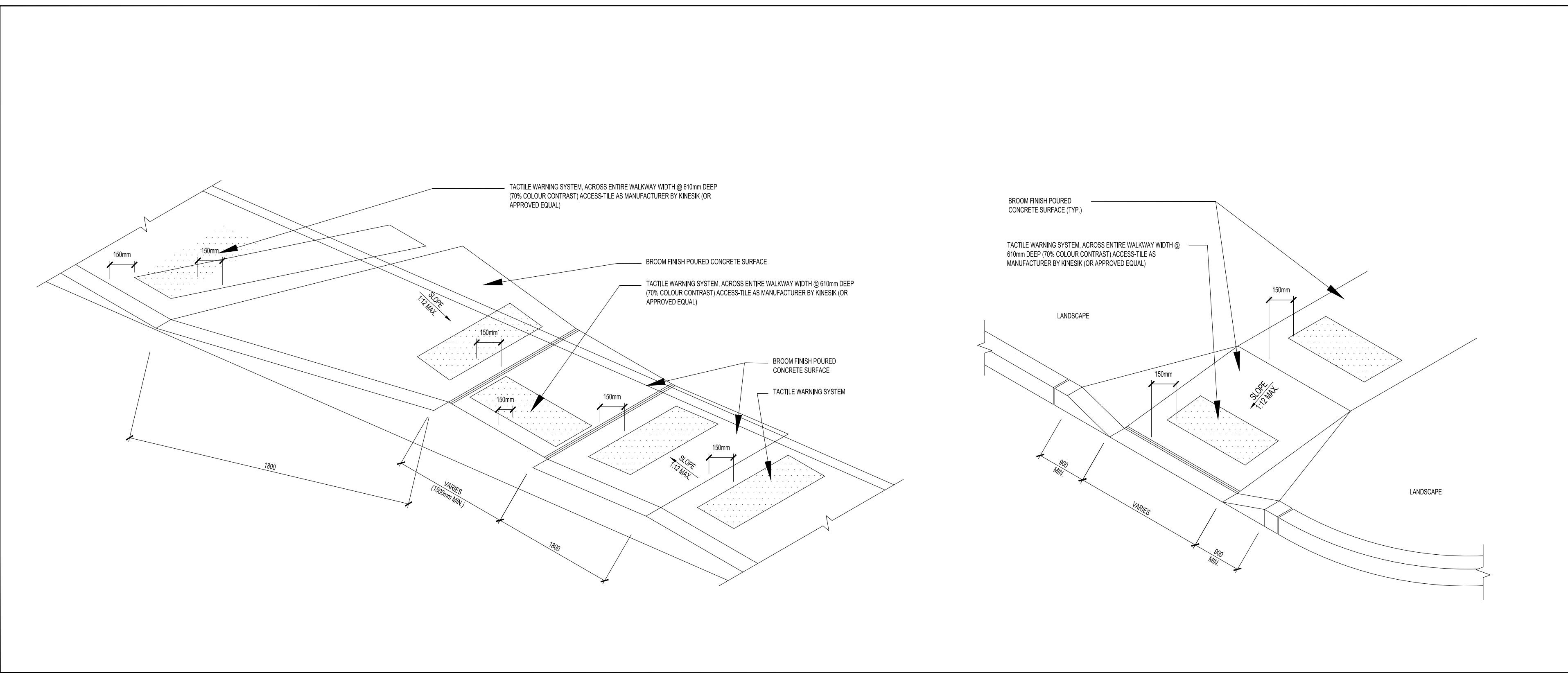
12 TYPICAL GUARD ON RETAINING WALL
SCALE: 1:10



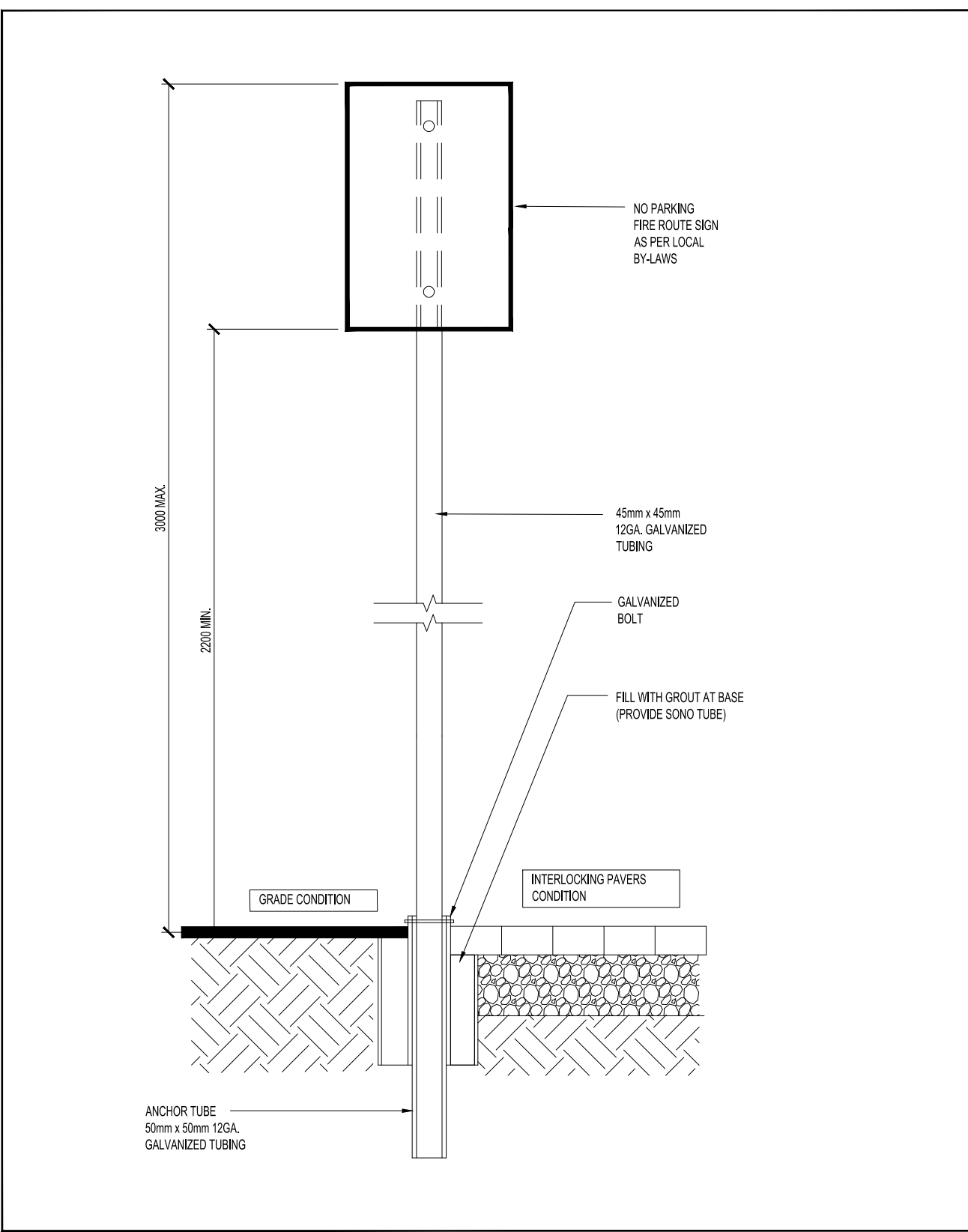
11 TYPICAL BARRIER-FREE SIGNAGE. TO BE VERIFIED BY THE MUNICIPALITY
SCALE: NTS



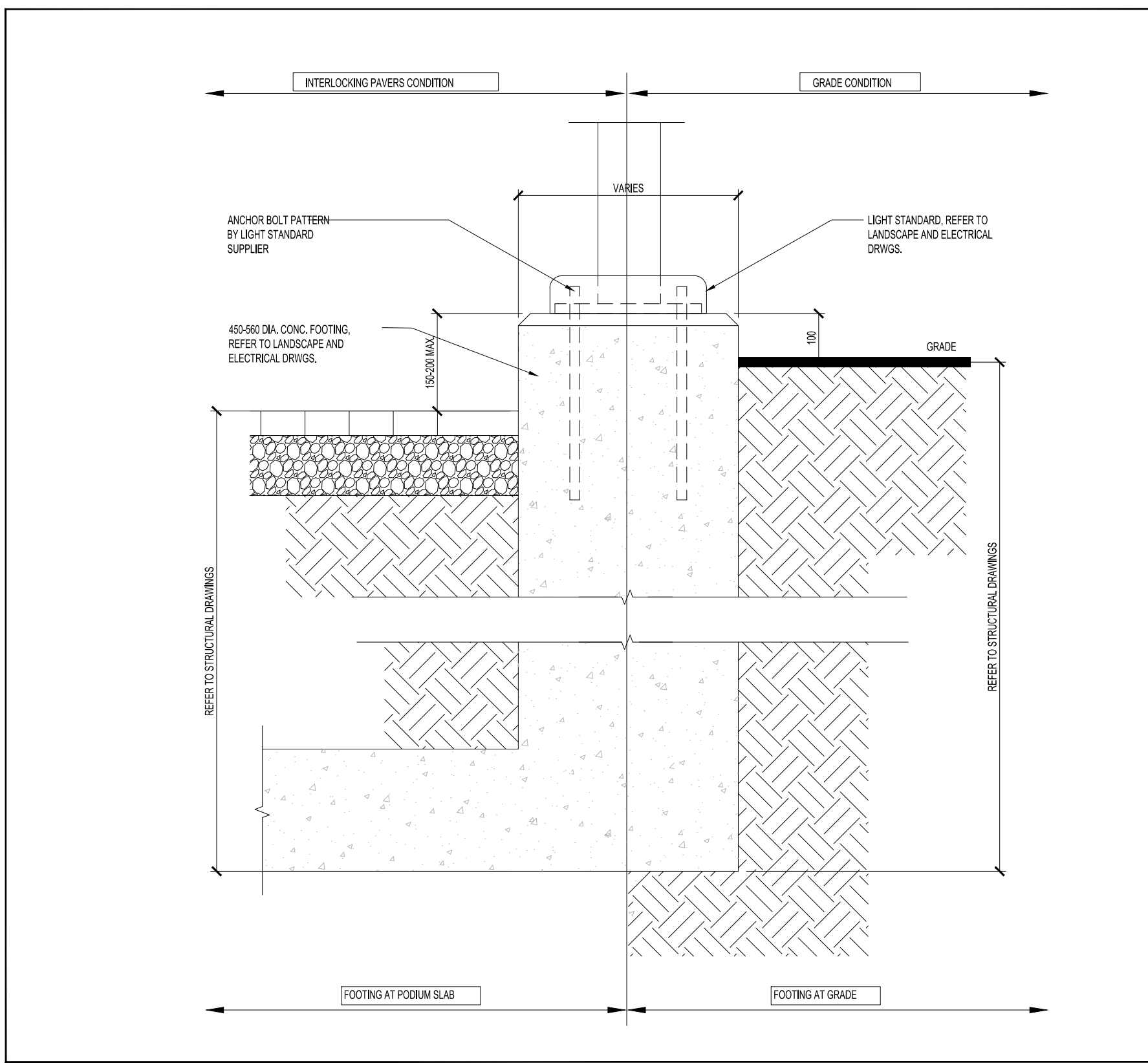
10 TYPICAL FIRE ROUTE SIGNAGE. TO BE VERIFIED BY THE MUNICIPALITY
SCALE: NTS



9 BARRIER FREE CURB CUT
SCALE: NTS



8 FIRE ROUTE SIGN - SUPPORT BASE
SCALE: 1:10



7 LIGHT STANDARD POLE BASE DETAIL
SCALE: 1:10

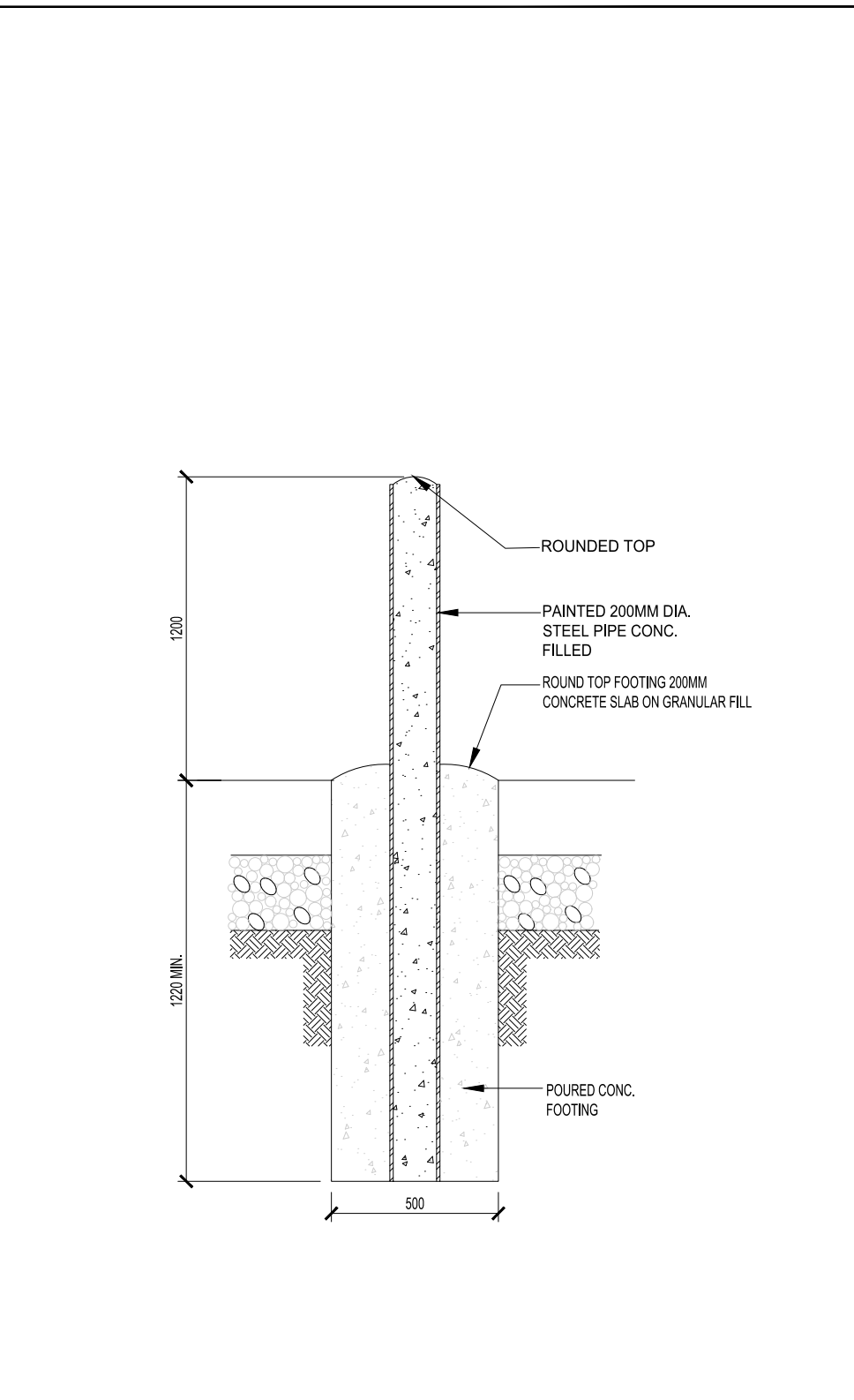
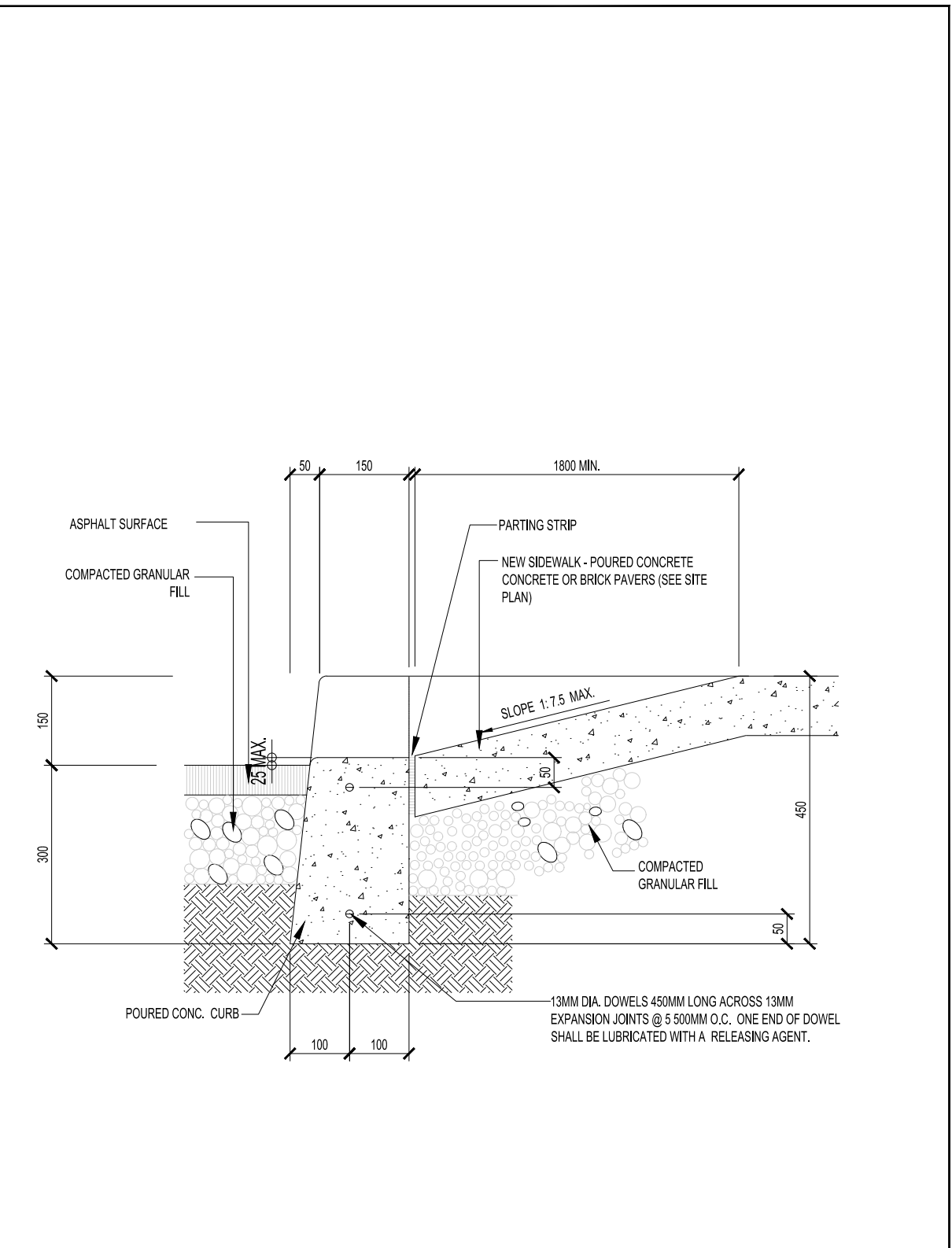
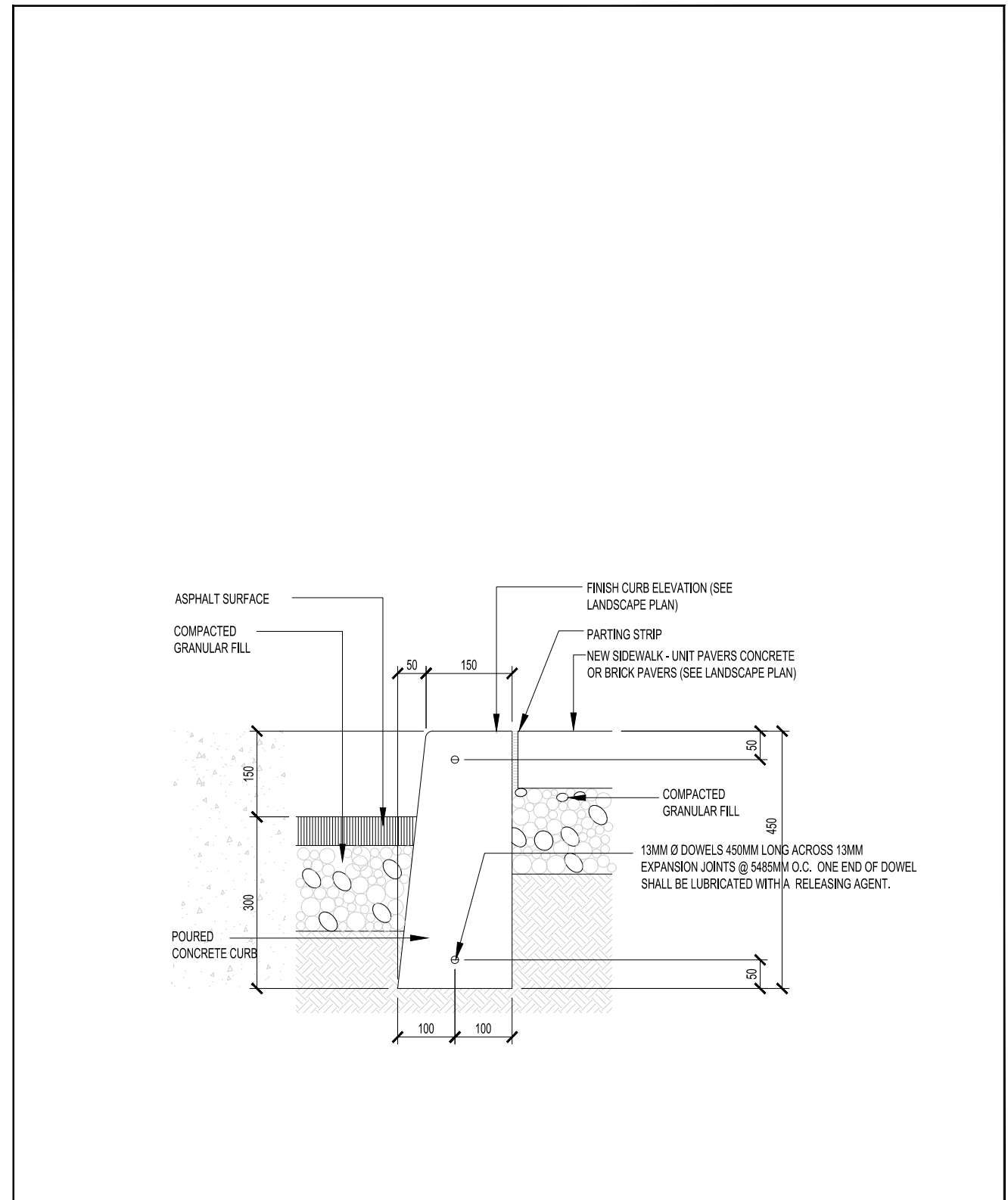
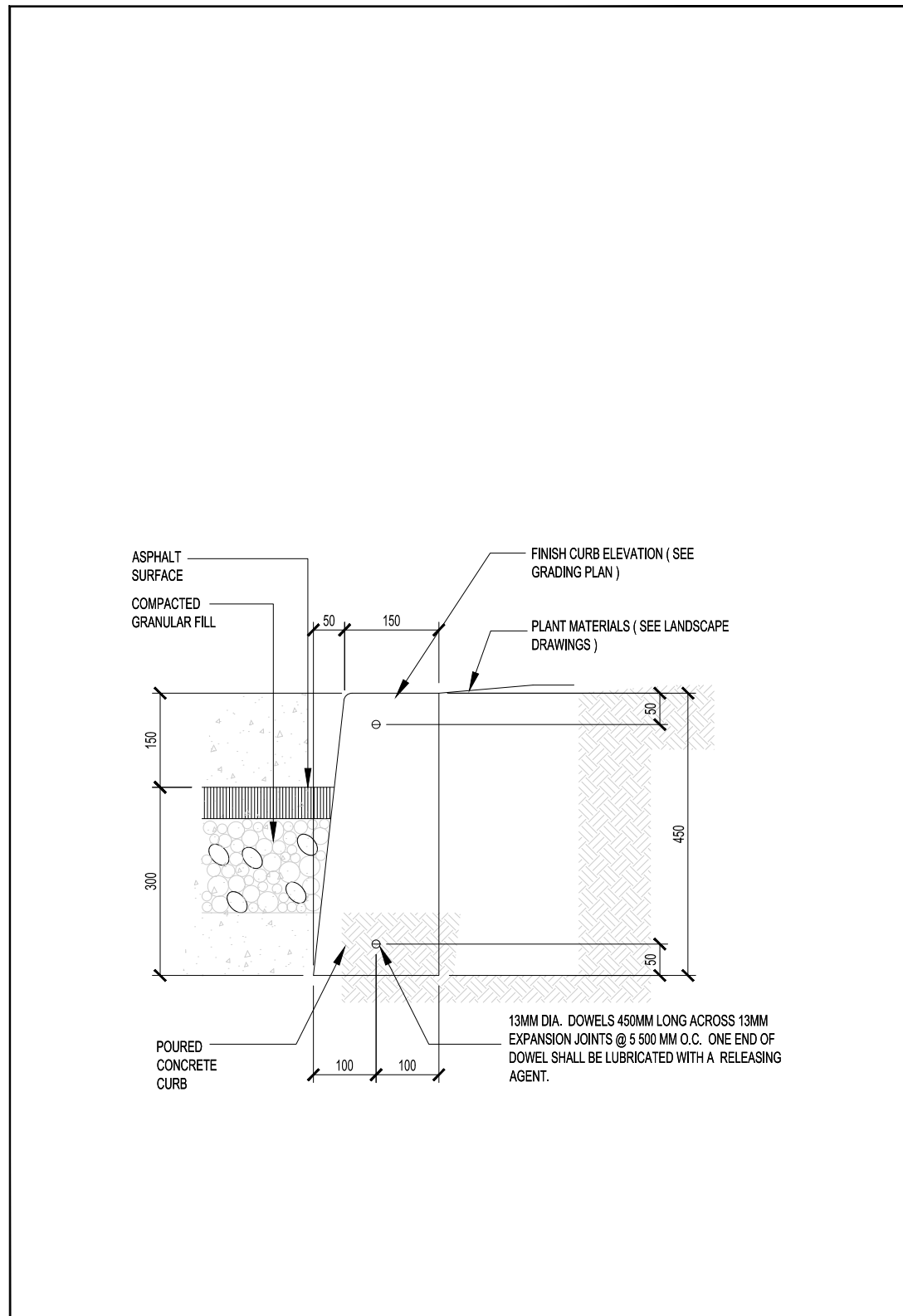
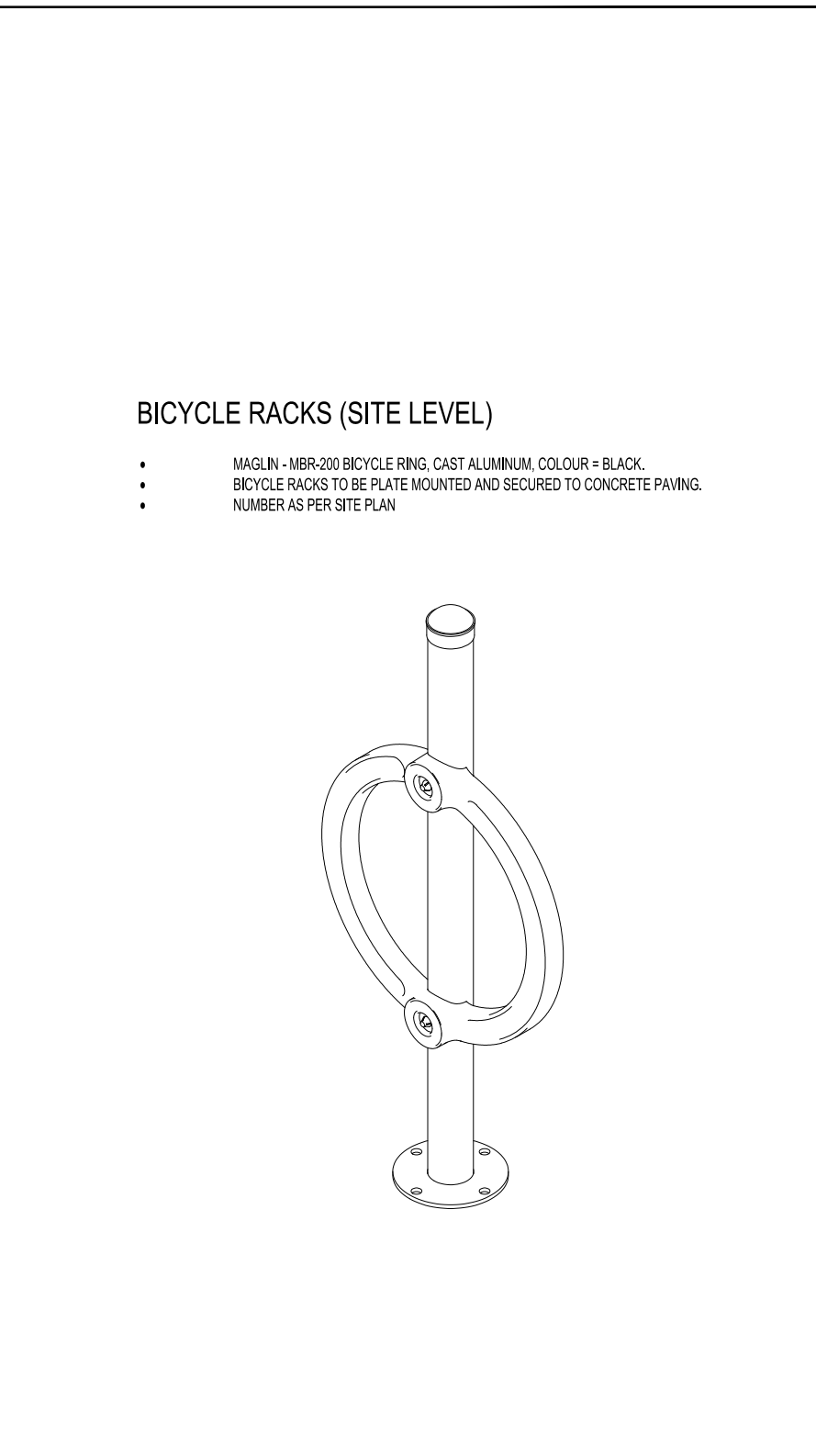
6 MOLOK WASTE MANAGEMENT SYSTEMS AND FINISHES
SCALE: NTS

Capacity	Container division options	Dimensions of the opening	Lifting equipment options	Suitable waste fractions
3 m ³		Filling hole size min. 100 x 350 mm, max. 600 mm	Lifting bag Reinforced lifting bag for glass	Mixed waste, paper, metal and glass

Framing options: EcoFrame (Recycled plastic colours), MidFrame (Aluminum, Natural and RAL colours), PriFrame (Structure panel, Customizable printing), CustomFrame (Customizable material).

EcoFrame colours: Midnight black, Graphite grey, Coffee brown, Brick brown.

Colour options for filling lids: Black (standard), Dark grey, Yellow, Green, Blue, Brown, Red, White, Orange.



PRELIMINARY
NOT FOR CONSTRUCTION

NO.	DATE	REVISION COMMENT

SRN ARCHITECTS INC SHALL NOT BE RESPONSIBLE FOR:
1. ERRORS, OMISSIONS, INCOMPLETENESS DUE TO LOSS OF INFORMATION IN PRINT OR ELECTRONIC FORM.
2. TRANSMISSIONS OF ANY FILE OR DAMAGE TO RECEIVING ELECTRONIC SYSTEM AND INFORMATION BEING TRANSMITTED.

SRN ARCHITECTS
8395 JANE STREET, SUITE 202
VAUGHAN, ONTARIO L4K 5Y2
PHONE: 905.411.5515 FAX: 905.411.2517

Stamp: ONTARIO ASSOCIATION OF ARCHITECTS
REG. NO. 123456789
LESLIE GIBB

CLIENT: **OSGOODE PROPERTIES**
1284 Wellington Street West, Ottawa, Ont.
K1Y 3A9
Tel: 613-729-0656

PROJECT: **OSGOODE STACKS**
2025 OTHELLO AVE.
OTTAWA, ONTARIO

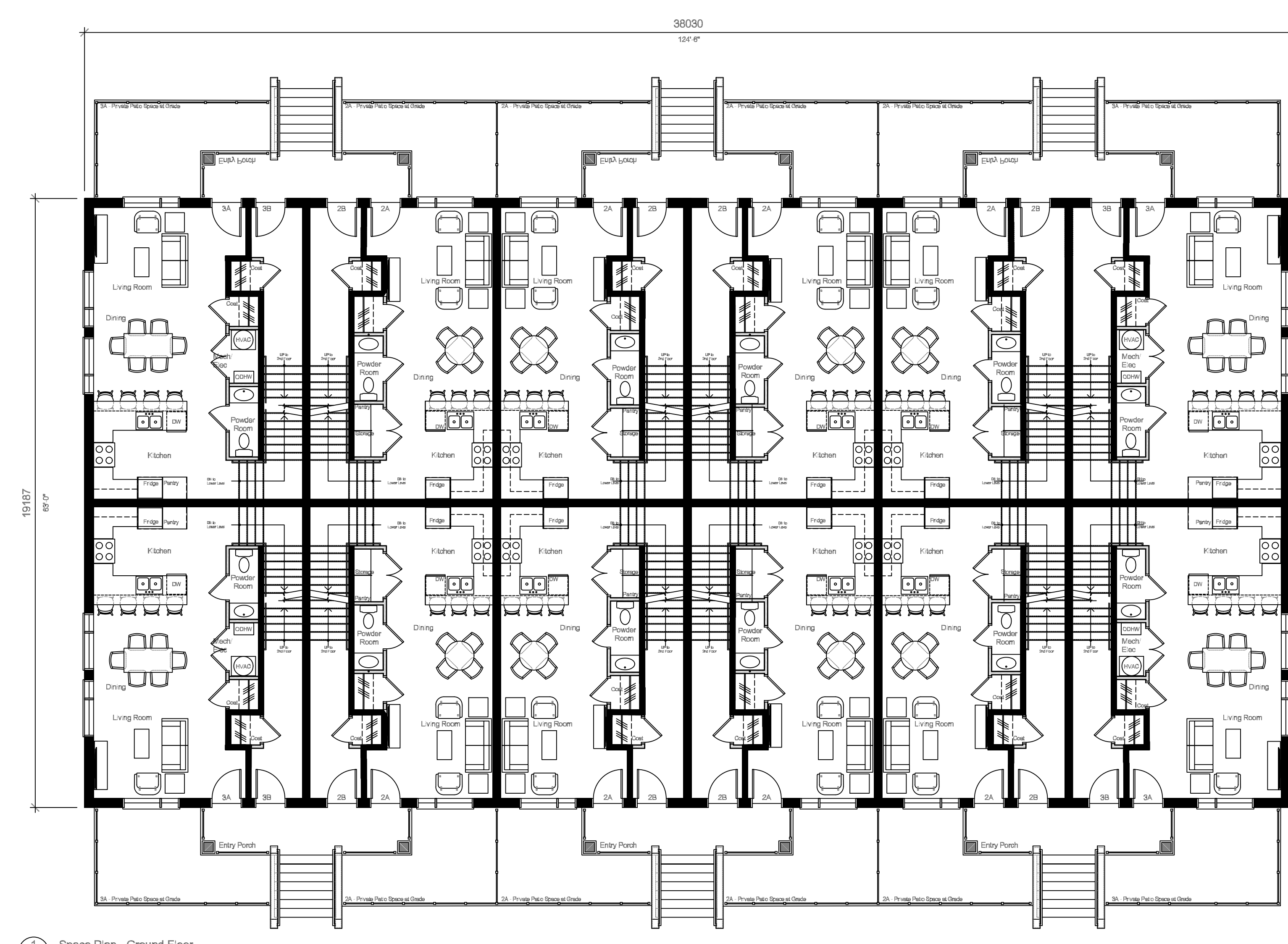
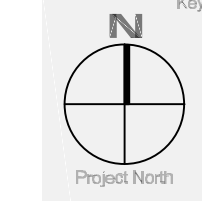
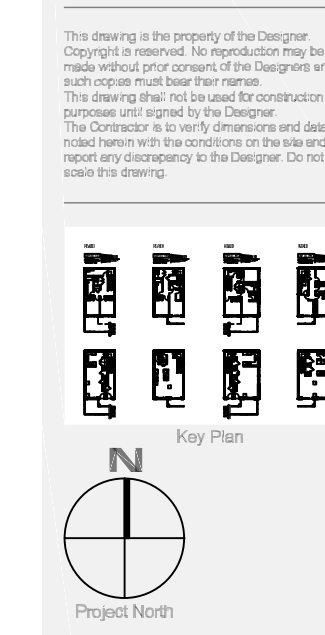
DRAWING TITLE: **SITE DETAILS**

DATE	SCALE
2024.11.14	AS NOTED

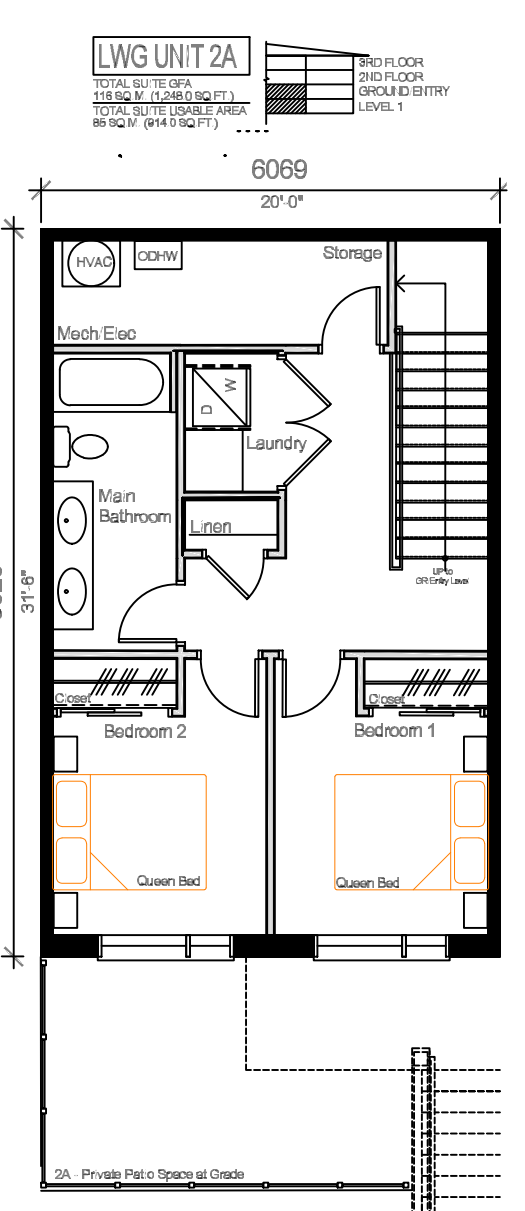
DRAWN BY	CHECKED BY
BK	GF

PROJECT NUMBER: **S24016**
DRAWING NUMBER: **A101**

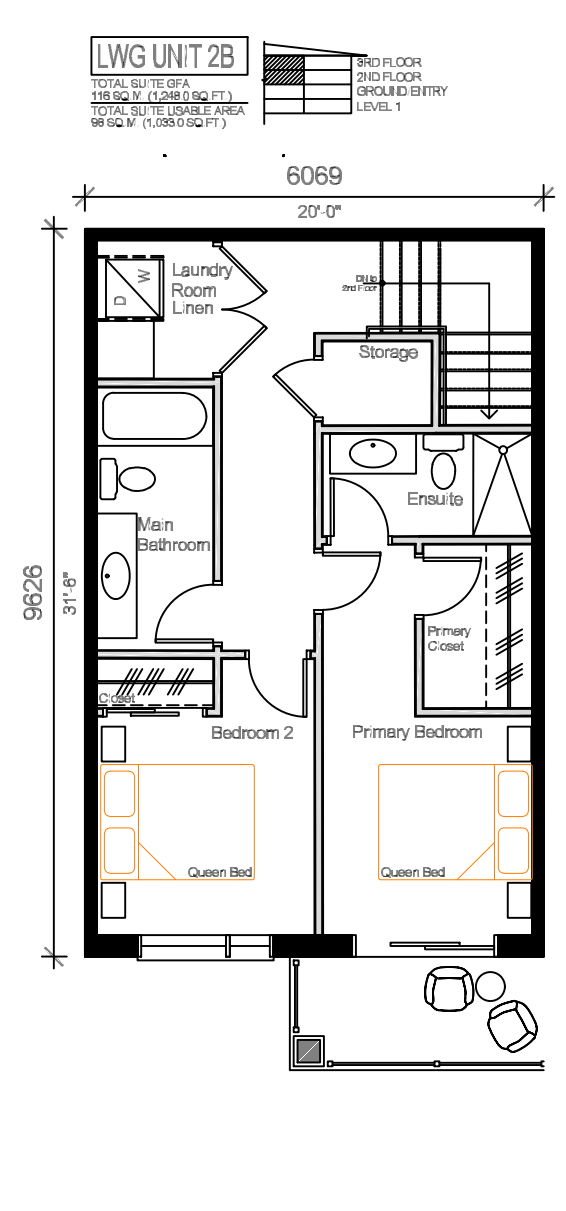
NO.	DATE	ISSUED FOR
1	05 09 25	ISSUED FOR SPA
2	12 12 25	SPA RE-SUBMISSION
3	11 02 26	SPA RE-SUBMISSION



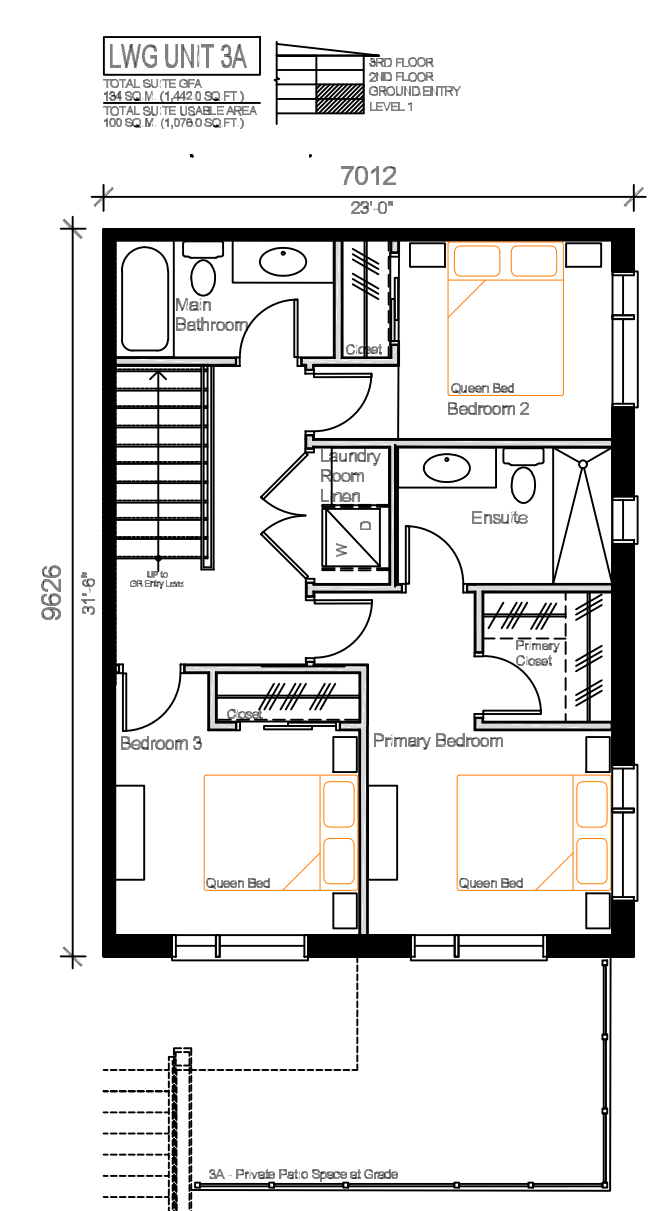
1 Space Plan - Ground Floor
Scale: 1:50



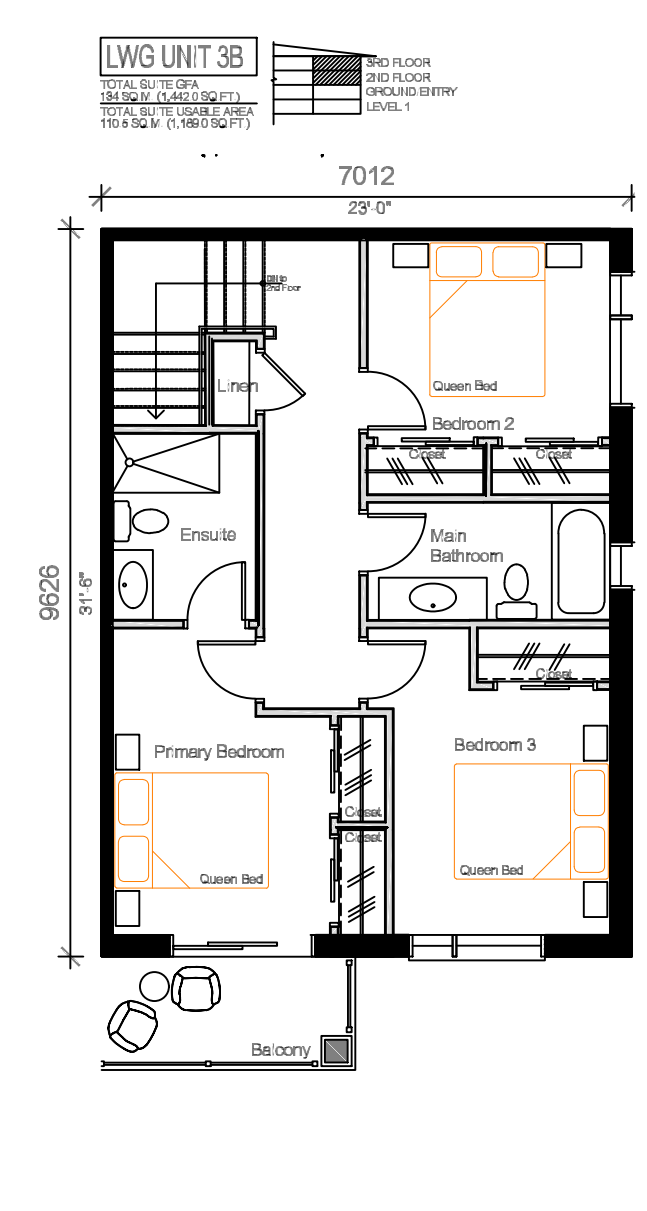
1 Space Plan - Unit 2A 1.5 Bath - Lower Level
Scale: 1:50



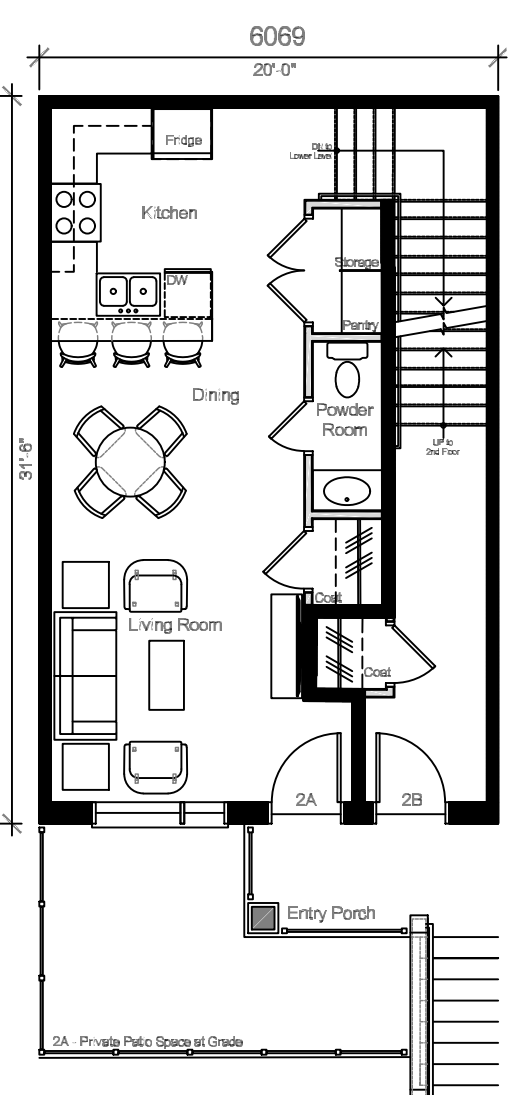
2 Space Plan - Unit 2B 2.5 Bath - 3rd Floor
Scale: 1:50



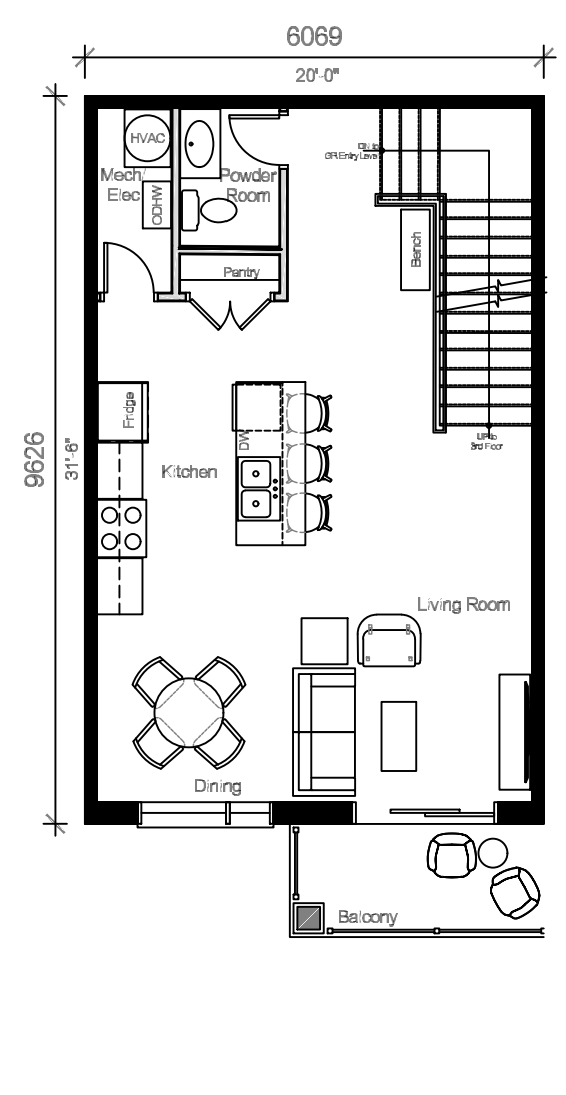
3 Space Plan - Unit 3A 2.5 Bath - Lower Level
Scale: 1:50



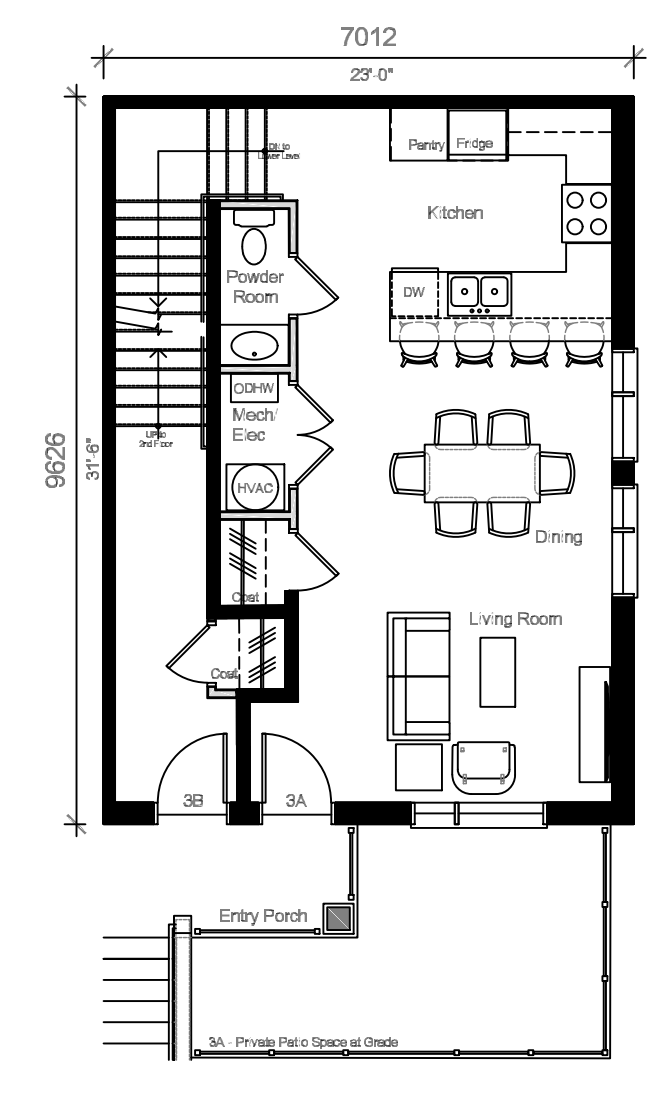
4 Space Plan - Unit 3B 2.5 Bath - 3rd Floor
Scale: 1:50



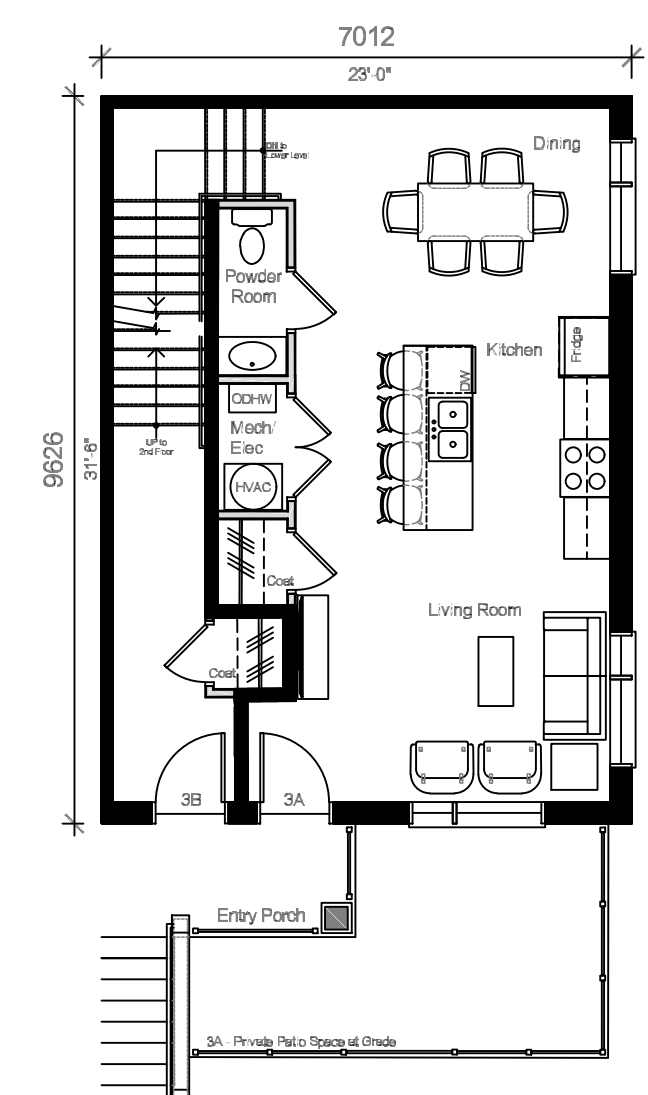
5 Space Plan - Unit 2A - Ground Entry Floor
Scale: 1:50



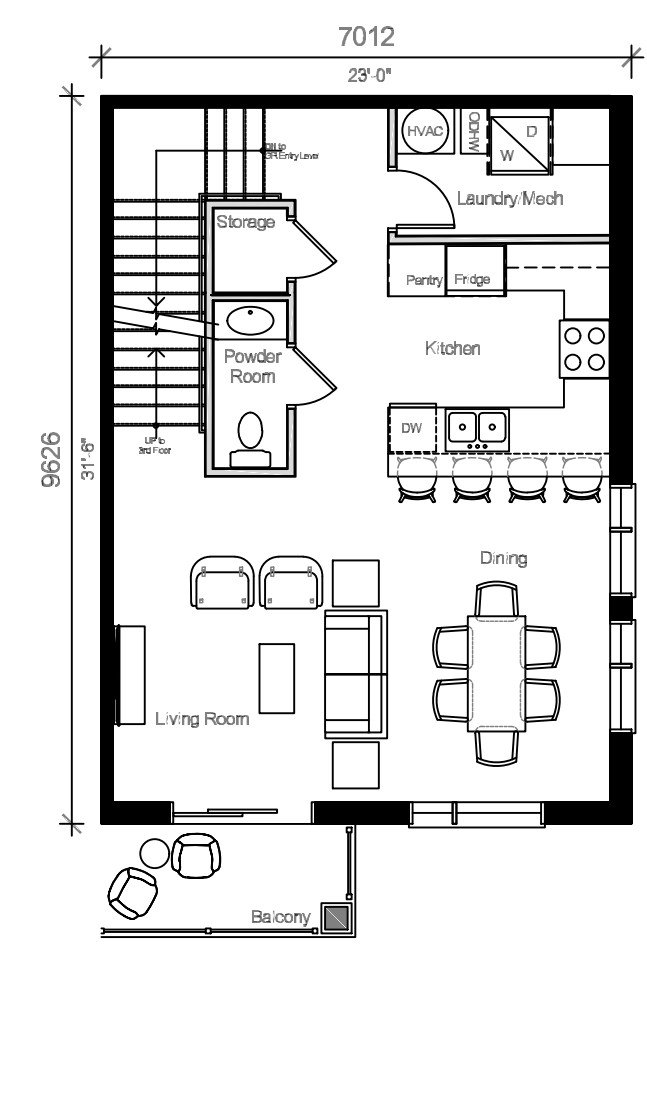
6 Space Plan - Unit 2B - 2nd Floor
Scale: 1:50



7 Space Plan - Unit 3A - Ground Entry Floor - Option A
Scale: 1:50

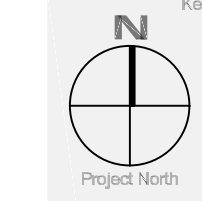
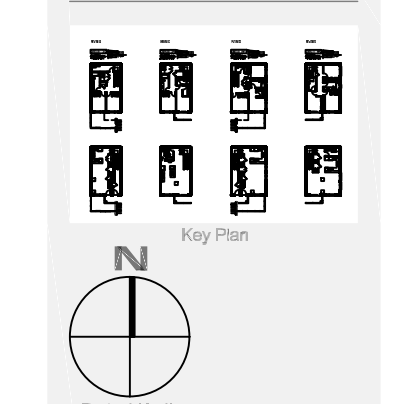


8 Space Plan - Unit 3A - Ground Entry Floor - Option B
Scale: 1:50



9 Space Plan - Unit 3B - Ground Entry Floor
Scale: 1:50

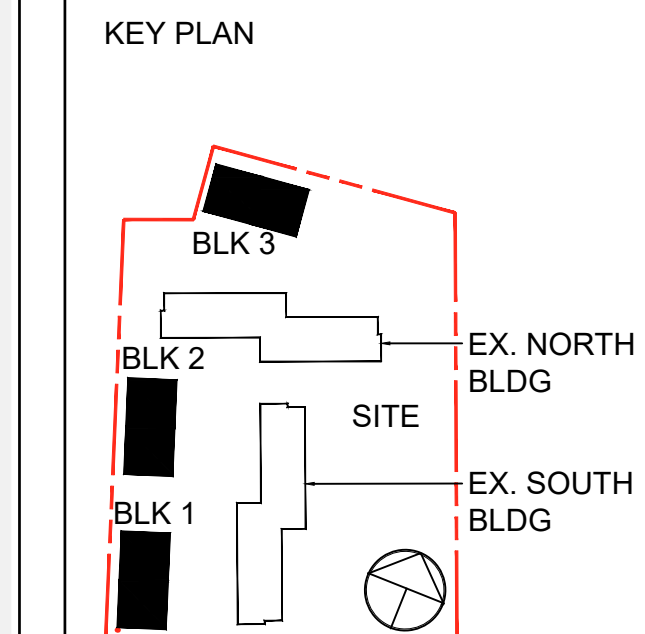
This drawing is the property of LWG Architectural Interiors. It is to be used only for the project and site identified on the title block. It is not to be reproduced, stored in a retrieval system, or transmitted in any form or by any means, electronic, mechanical, photocopying, recording, or by any information storage and retrieval system, without the prior written permission of LWG Architectural Interiors. The user of this drawing is to be held responsible for any errors or omissions. The user of this drawing is to be held responsible for any errors or omissions. The user of this drawing is to be held responsible for any errors or omissions.



Preliminary
Do not use for construction

OSGOODE STACKS
2025 Othello Ave
Ottawa, ON
Drawing Title: Space Plan - Unit 2A, 2B, 3A & 3B
Project Number: 25038
Date: 2025-03-30
Project Name: Osgoode Stacks
Site: 2025 Othello Ave
Ottawa, ON
Drawn By: AD
Checked By: BK
Date Checked: 02

ADDITIONAL NOTES:
THE DRAWING, AS AN INSTRUMENT OF SERVICE, IS PROVIDED BY AND IS THE PROPERTY OF SRN ARCHITECTS INC. THE CONTRACTOR MUST VERIFY AND ACCEPT RESPONSIBILITY FOR ALL DIMENSIONS AND CONDITIONS ON SITE AND MUST NOTIFY SRN ARCHITECTS INC. OF ANY VARIATIONS FROM THE SUPPLIED INFORMATION SHOWN ON THE DRAWING PRIOR TO ANY COMMENCEMENT OF WORK. THE CONTRACTOR IS RESPONSIBLE FOR OBTAINING ALL NECESSARY PERMITS AND APPROVALS FROM THE APPROPRIATE AUTHORITIES BEFORE PROCEEDING WITH ANY WORK. CONSTRUCTION MUST CONFORM TO ALL APPLICABLE CODES AND REQUIREMENTS OF THE APPLICABLE JURISDICTION. UNLESS OTHERWISE NOTED, NO INVESTIGATION HAS BEEN OR REPORTED BY THE OFFICE IN REGARD TO THE ENVIRONMENTAL CONDITIONS OF THIS SITE.
CONDITIONS FOR ELECTRONIC INFORMATION TRANSFER:
ELECTRONIC INFORMATION IS SUPPLIED TO OTHER ASSOCIATED FIRMS TO ASSIST THEM IN THE EXECUTION OF THEIR WORK. THE RECIPIENT FIRMS MUST OBTAIN THE CLIENT'S WRITTEN APPROVAL PRIOR TO THE RECIPIENT FIRMS' USE OF THE INFORMATION IN RESPECT TO THEIR PARTICULAR RESPONSIBILITY.



PRELIMINARY
NOT FOR CONSTRUCTION

NO.	DATE	REVISION COMMENT

SRN ARCHITECTS INC SHALL NOT BE RESPONSIBLE FOR:
1. ERRORS, OMISSIONS, INCOMPLETENESS DUE TO LOSS OF INFORMATION IN WHOLE OR PART WHEN INFORMATION IS TRANSFERRED.
2. TRANSMISSIONS OF ANY FILE OR DAMAGE TO RECEIVING ELECTRONIC SYSTEMS WHEN INFORMATION IS TRANSFERRED.

S&N ARCHITECTS
8395 JANE STREET, SUITE 202
VAUGHAN, ONTARIO L4K 5Y2
PHONE: 905.417.5515 FAX: 905.417.5517

CLIENT:
OSGOODE PROPERTIES
1284 Wellington Street West, Ottawa On.
K1Y 3A9
Tel: 613-729-0656

PROJECT:
OSGOODE STACKS
2025 OTHELLO AVE.
OTTAWA, ONTARIO

DRAWING TITLE:
PRELIMINARY FLOOR PLANS

DATE: 2025.06.26 **SCALE:** 1:100
DRAWN BY: AD **CHECKED BY:** BK
PROJECT NUMBER: S24016 **DRAWING NUMBER:** A300

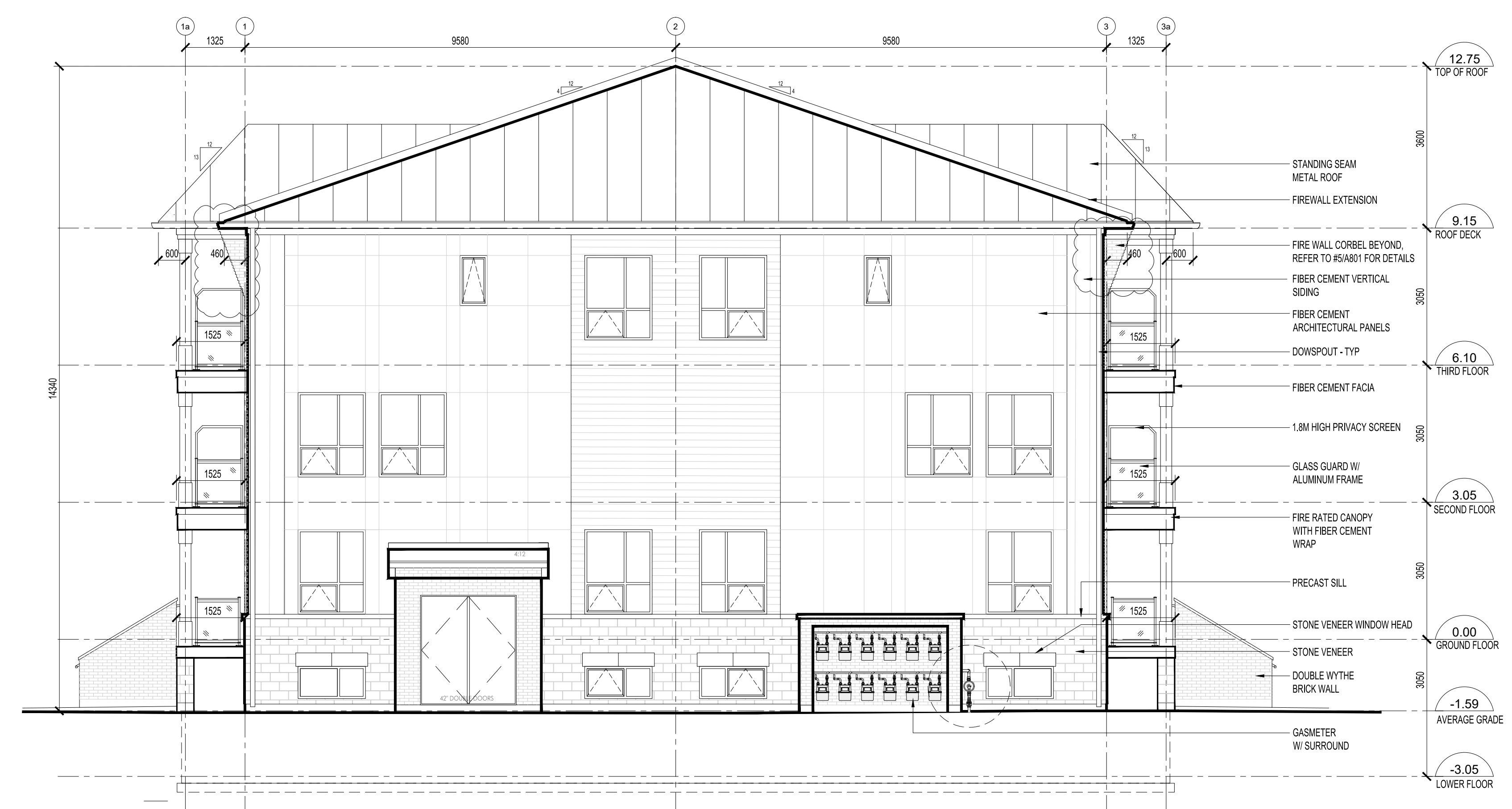
THESE DRAWINGS ARE NOT TO BE SCALED.
ALL DIMENSIONS MUST BE VERIFIED BY CONTRACTOR PRIOR TO COMMENCEMENT OF ANY WORK. ANY DISCREPANCIES MUST BE REPORTED IMMEDIATELY TO SRN ARCHITECTS INC. ALL ARCHITECTURAL SYMBOLS INDICATED ON THIS DRAWING ARE DRAWING REPRESENTATIONS ONLY.

NO.	DATE	REVISED FOR
1	05 09 25	ISSUED FOR SPA
2	12 12 25	SPA RE-SUBMISSION
3	11 02 26	SPA RE-SUBMISSION

ADDITIONAL NOTES
THE DRAWING, AS AN INSTRUMENT OF SERVICE, IS PROVIDED BY AND IS THE PROPERTY OF SRN ARCHITECTS INC. THE CONTRACTOR MUST VERIFY AND ASSUME RESPONSIBILITY FOR ALL DIMENSIONS AND CONDITIONS ON SITE AND MUST NOTIFY SRN ARCHITECTS INC. OF ANY VARIATIONS FROM THE SUPPLIED INFORMATION. SRN ARCHITECTS INC. IS NOT RESPONSIBLE FOR THE ACCURACY OF SURVEY, STRUCTURAL, MECHANICAL, ELECTRICAL, ETC. ENGINEERING INFORMATION SHOWN ON THE DRAWING REFER TO APPROPRIATE ENGINEERING DRAWINGS BEFORE PROCEEDING WITH ANY WORK. CONSTRUCTION MUST CONFORM TO ALL APPLICABLE CODES AND REQUIREMENTS OF THE APPLICABLE BUILDING DEPARTMENT. UNDER NO CIRCUMSTANCES SHALL SRN ARCHITECTS INC. BE HELD RESPONSIBLE FOR ANY DAMAGE TO OR DESTRUCTION OF THE ENVIRONMENTAL CONDITION OF THE SITE.
CONDITIONS FOR ELECTRONIC INFORMATION TRANSFER
ELECTRONIC INFORMATION IS SUPPLIED TO THE OTHER ASSOCIATED FIRMS TO ASSIST THEM IN THE EXECUTION OF THEIR WORK. HOWEVER, THE RECEIVING FIRMS MUST DETERMINE THE COMPLETENESS AND RELIABILITY OF THE INFORMATION IN RESPECT TO THEIR PARTICULAR RESPONSIBILITY.



1 MAIN ELEVATION - TYP. BLOCK
SCALE: 1:100



2 SIDE ELEVATION - TYP. BLOCK
SCALE: 1:100

NO.	DATE	REVISION COMMENT

SRN ARCHITECTS INC. SHALL NOT BE RESPONSIBLE FOR:
1. ERRORS, OMISSIONS, INCOMPLETENESS DUE TO LOSS OF INFORMATION IN WHOLE OR PART BEING INFORMATION TRANSFERRED;
2. TRANSMISSIONS OF ANY KIND OR DAMAGE TO RECEIVING ELECTRONIC SYSTEM WHEN INFORMATION IS TRANSFERRED.

SRN ARCHITECTS
ARCHITECTS
8395 JANE STREET, SUITE 202
VAUGHAN, ONTARIO, L4K 5Y2
PHONE: 905.417.5015 FAX: 905.417.5017

STAMP
ONTARIO ASSOCIATION OF ARCHITECTS
CREATED BY PATRICK PALERNA
LICENSED 6888

© SRN ARCHITECTS INC. 2024

CLIENT:
OSGOODE PROPERTIES
1284 Wellington Street West, Ottawa, Ont.
K1Y 3A8
Tel: 613-729-0656

PROJECT:
OSGOODE STACKS
2025 OTHELLO AVE.
OTTAWA, ONTARIO

DRAWING TITLE:
BUILDING ELEVATIONS

DATE: 2025.05.25 SCALE: 1:300
DRAWN BY: BK CHECKED BY: GR

PROJECT NUMBER: **S24016** DRAWING NUMBER: **A400**