

CLIENT



**COPYRIGHT**  
 This drawing has been prepared solely for the intended use, thus any reproduction or distribution for any purpose other than authorized by Arcadis is forbidden. Written dimensions shall have precedence over scaled dimensions. Contractors shall verify and be responsible for all dimensions and conditions on the job, and Arcadis shall be informed of any variations from the dimensions and conditions shown on the drawing. Shop drawings shall be submitted to Arcadis for general conformance before proceeding with fabrication.

**Arcadis Professional Services (Canada) Inc.**  
 formerly (B) Group Professional Services (Canada) Inc.

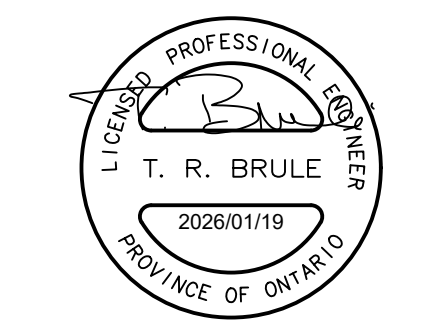
ISSUES		
No.	DESCRIPTION	DATE
1	ISSUED FOR SPRA	2025-08-21
2	RE-ISSUED FOR SPRA	2026-01-19



CONSULTANTS



SEAL



PRIME CONSULTANT



333 Preston Street - Suite 500  
 Ottawa ON K1S 5N4 Canada  
 tel 613 225 1311  
 www.arcadis.com

PROJECT

**KILLAM - CITY PARK PHASE 2  
 INTERIM PARKING**

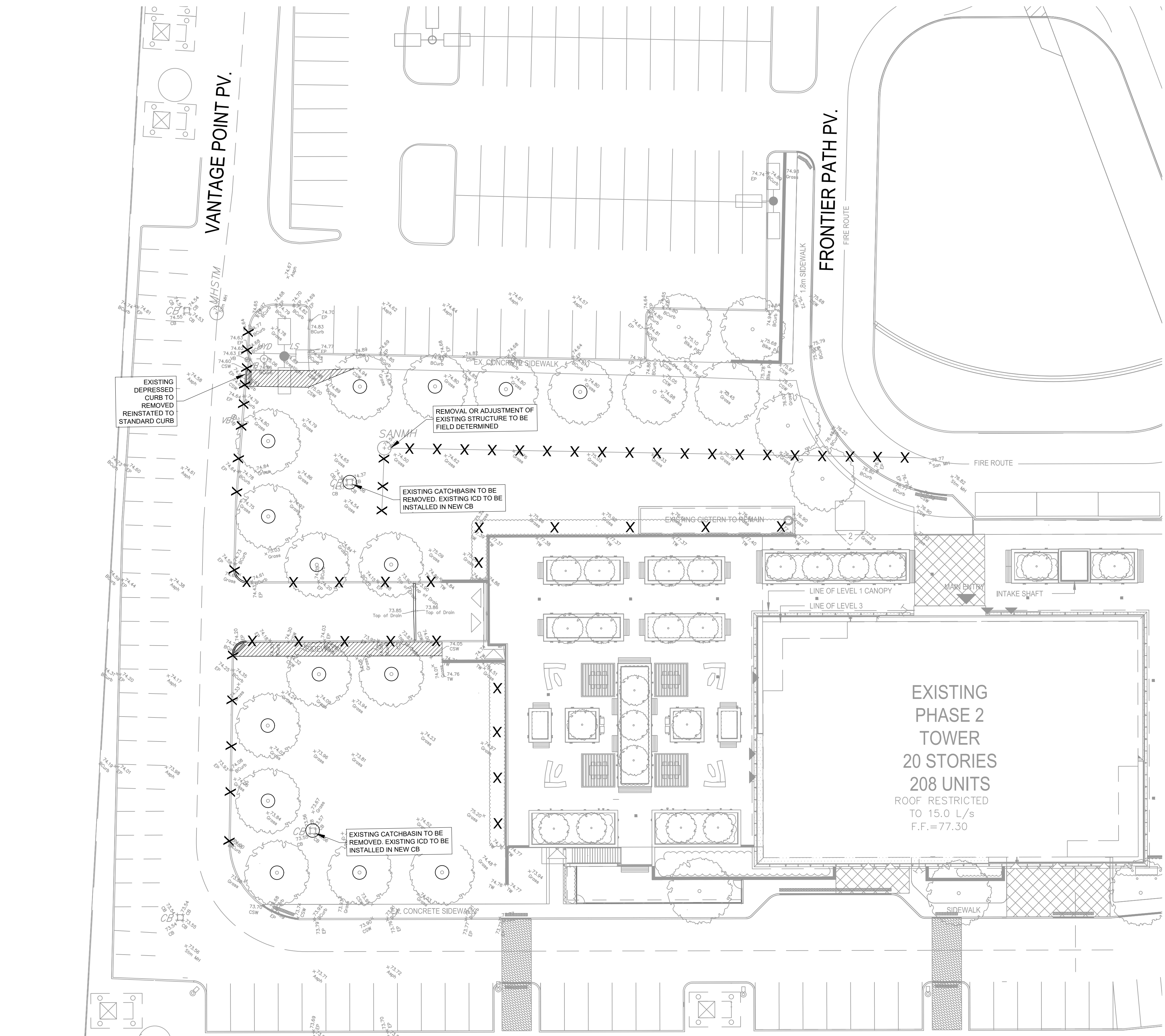
200 FRONTIER PATH PVT.

PROJECT NO: 38729

DRAWN BY: <b>D.D. / E.H.</b>	CHECKED BY: <b>M.P.</b>
PROJECT MGR: <b>T.R.B.</b>	APPROVED BY: <b>T.R.B.</b>

SHEET TITLE  
**REMOVALS PLAN**

SHEET NUMBER <b>C-001</b>	ISSUE <b>1</b>
------------------------------	-------------------



REMOVAL	DRY GRIND EXISTING ASPHALT. AVERAGE DEPTH 50mm.
ADJUST MANHOLE, VALVES	FULL DEPTH ASPHALT REMOVAL
ADJUST CATCH BASIN	AREA TO BE CLEARED AND GRUBBED
ADJUSTMENT BY BELL OR HYDRO APPROVED CONTRACTOR	REMOVAL OF BUILDINGS, FOUNDATIONS, SEPTIC SYSTEM AND WELL
REMOVE OR ABANDON SEWER, WATERMAIN, UTILITY, CURB RETURNS	REMOVALS OF CONCRETE/ ASPHALT SIDEWALK
PLUG	

File Location: \\38729-Sherbrooke\City\CA\5.9 Drawings\06\Current\Parkings\Removals\C-001 REMOVALS PLAN.dwg  
 Last Saved: January 19, 2025, 3:41:44 PM by Vaghela, Devastash  
 Plotter: January 19, 2025, 3:41:44 PM by Vaghela, Devastash  
 Plan #: 17741