

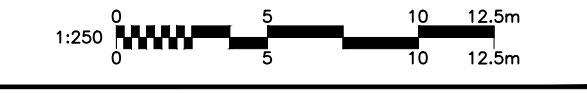
COPYRIGHT
 This drawing has been prepared solely for the intended use, thus any reproduction or distribution for any purpose other than authorized by Arcadis is forbidden. Written dimensions shall have precedence over scaled dimensions. Contractors shall verify and be responsible for all dimensions and conditions on the job, and Arcadis shall be informed of any variations from the dimensions and conditions shown on the drawing. Shop drawings shall be submitted to Arcadis for general conformance before proceeding with fabrication.

Arcadis Professional Services (Canada) Inc.
 formerly (B) Group Professional Services (Canada) Inc.

| ISSUES | | |
|--------|--------------------|------------|
| No. | DESCRIPTION | DATE |
| 1 | ISSUED FOR SPRA | 2025-08-21 |
| 2 | RE-ISSUED FOR SPRA | 2026-01-19 |



CONSULTANTS



SEAL

EXISTING PHASE 2 TOWER
 20 STORIES
 208 UNITS
 ROOF RESTRICTED TO 15.0 L/s
 F.F. = 77.30

PRIME CONSULTANT

333 Preston Street - Suite 500
 Ottawa ON K1S 5N4 Canada
 tel 613 225 1311
 www.arcadis.com

PROJECT
KILLAM - CITY PARK PHASE 2 INTERIM PARKING
 200 FRONTIER PATH PVT.

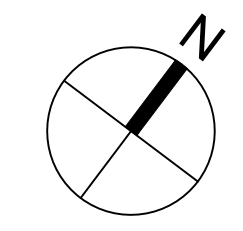
PROJECT NO:
38729

| | |
|---------------------------------|-------------------------------|
| DRAWN BY: D.D. / E.H. | CHECKED BY: M.P. |
| PROJECT MGR: T.R.B. | APPROVED BY: T.R.B. |

SHEET TITLE
EXISTING CONDITIONS PLAN

| | |
|------------------------------|-------------------|
| SHEET NUMBER C-000 | ISSUE 1 |
|------------------------------|-------------------|

File Location: J:\38729-SilverCity\CA\5.9 Drawings\Civil\Current\Parking\Sheets\C-000 EXISTING CONDITION PLAN.dwg Last Saved: January 15, 2026, by dore5754 Plotter: January 19, 2026 3:40:19 PM by Vaghela, Devabansh
 Scale: 1/4" = 1'-0"
 Plan #: 17741



CLIENT



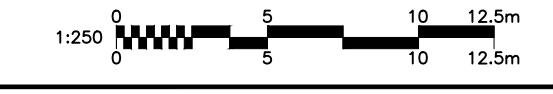
COPYRIGHT
 This drawing has been prepared solely for the intended use, thus any reproduction or distribution for any purpose other than authorized by Arcadis is forbidden. Written dimensions shall have precedence over scaled dimensions. Contractors shall verify and be responsible for all dimensions and conditions on the job, and Arcadis shall be informed of any variations from the dimensions and conditions shown on the drawing. Shop drawings shall be submitted to Arcadis for general conformance before proceeding with fabrication.

Arcadis Professional Services (Canada) Inc.
 formerly (B) Group Professional Services (Canada) Inc.

| ISSUES | | |
|--------|--------------------|------------|
| No. | DESCRIPTION | DATE |
| 1 | ISSUED FOR SPRA | 2025-08-21 |
| 2 | RE-ISSUED FOR SPRA | 2026-01-19 |



CONSULTANTS



SEAL



PRIME CONSULTANT

 333 Preston Street - Suite 500
 Ottawa ON K1S 5N4 Canada
 tel 613 225 1311
 www.arcadis.com

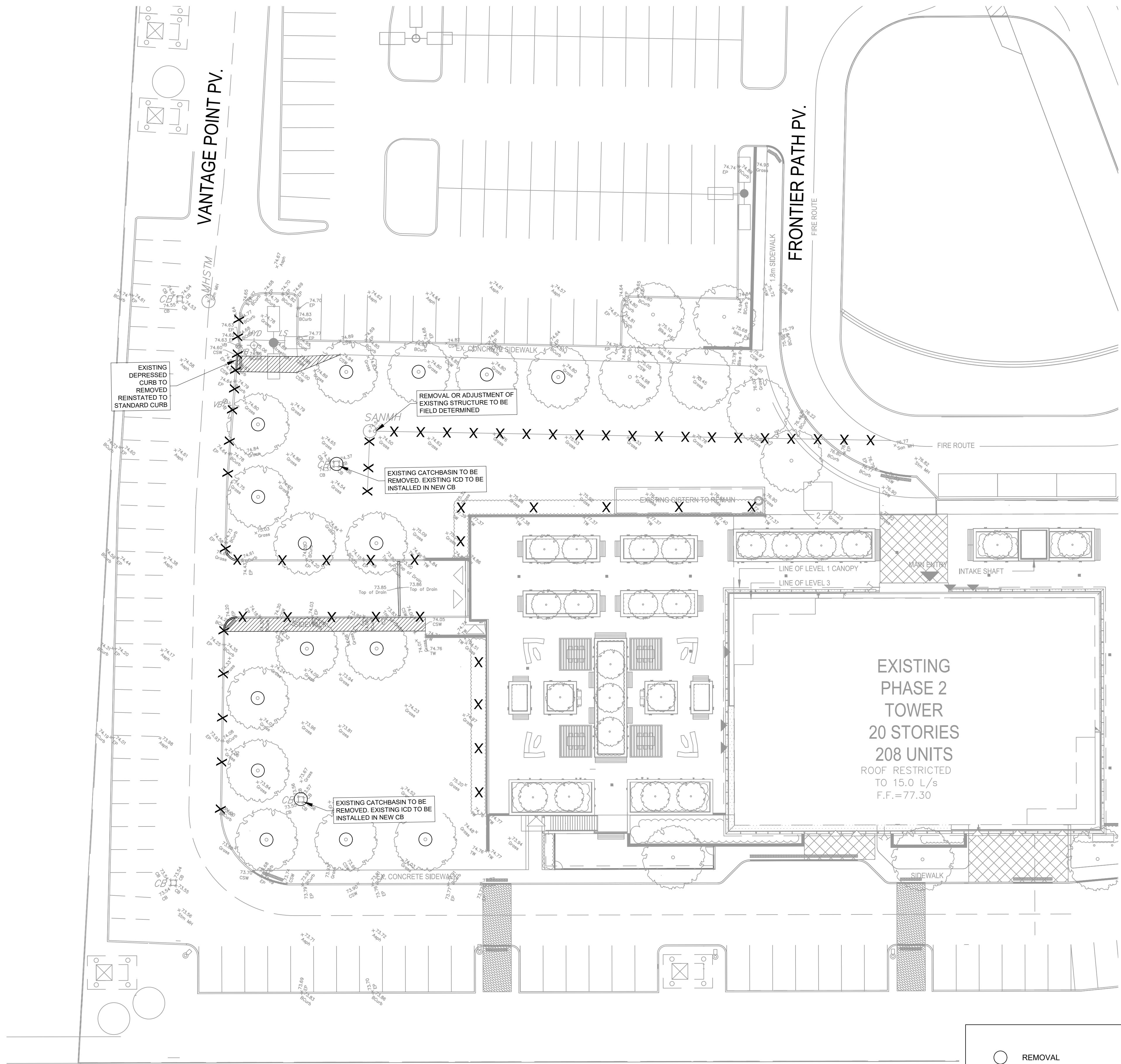
PROJECT
 KILLAM - CITY PARK PHASE 2
 INTERIM PARKING
 200 FRONTIER PATH PVT.

PROJECT NO:
38729

| | |
|---------------------------------|-------------------------------|
| DRAWN BY: D.D. / E.H. | CHECKED BY: M.P. |
| PROJECT MGR: T.R.B. | APPROVED BY: T.R.B. |

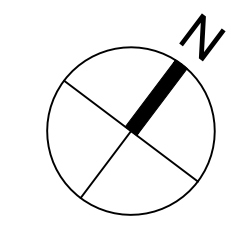
SHEET TITLE
REMOVALS PLAN

| | |
|------------------------------|-------------------|
| SHEET NUMBER C-001 | ISSUE 1 |
|------------------------------|-------------------|



| | |
|---|---|
| REMOVAL | DRY GRIND EXISTING ASPHALT. AVERAGE DEPTH 50mm. |
| ADJUST MANHOLE, VALVES | FULL DEPTH ASPHALT REMOVAL |
| ADJUST CATCH BASIN | AREA TO BE CLEARED AND GRUBBED |
| ADJUSTMENT BY BELL OR HYDRO APPROVED CONTRACTOR | REMOVAL OF BUILDINGS, FOUNDATIONS, SEPTIC SYSTEM AND WELL |
| REMOVE OR ABANDON SEWER, WATERMAIN, UTILITY, CURB RETURNS | REMOVALS OF CONCRETE/ ASPHALT SIDEWALK |
| PLUG | |

File Location: \\38729-Sherbrooke\City\CA\5.9 Drawings\06\Current\Removals\Removals\001 REMOVALS PLAN.dwg
 Last Saved: January 19, 2026, 3:41:44 PM by Vaghela, Devastash
 Plotter: January 19, 2026, by vaghela423
 Scale: 1:100
 Plan #: 17741
 Sheet #: 1 of 1



CLIENT



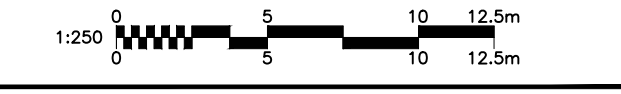
COPYRIGHT
 This drawing has been prepared solely for the intended use, thus any reproduction or distribution for any purpose other than authorized by Arcadis is forbidden. Written dimensions shall have precedence over scaled dimensions. Contractors shall verify and be responsible for all dimensions and conditions on the job, and Arcadis shall be informed of any variations from the dimensions and conditions shown on the drawing. Shop drawings shall be submitted to Arcadis for general conformance before proceeding with fabrication.

Arcadis Professional Services (Canada) Inc.
 formerly (B) Group Professional Services (Canada) Inc.

| ISSUES | | |
|--------|--------------------|------------|
| No. | DESCRIPTION | DATE |
| 1 | ISSUED FOR SPRA | 2025-08-21 |
| 2 | RE-ISSUED FOR SPRA | 2026-01-19 |



CONSULTANTS



SEAL

PRIME CONSULTANT

ARCADIS

333 Preston Street - Suite 500
 Ottawa ON K1S 5N4 Canada
 tel 613 225 1311
 www.arcadis.com

PROJECT
**KILLAM - CITY PARK PHASE 2
 INTERIM PARKING**

200 FRONTIER PATH PVT.

PROJECT NO:
38729

DRAWN BY:
D.D. / E.H.

CHECKED BY:
M.P.

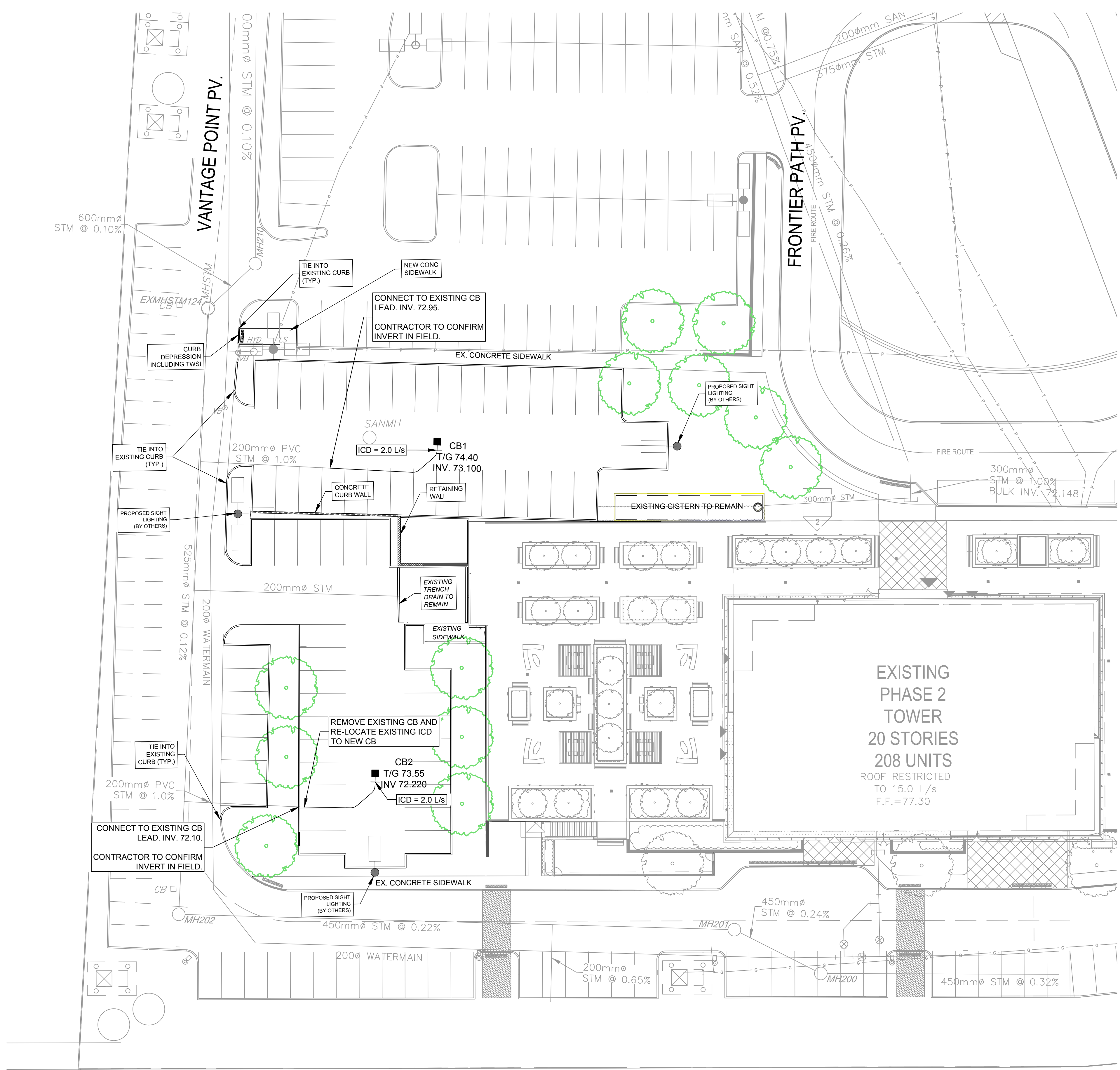
PROJECT MGR:
T.R.B.

APPROVED BY:
T.R.B.

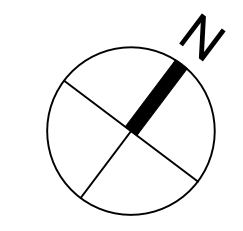
SHEET TITLE
GENERAL SERVICING PLAN

SHEET NUMBER
C-103

ISSUE
1



File Location: J:\38729-SilverCity\CA\5 Drawings\Boulevard\InterimParking\SheetC-103 SERVICING PLAN.dwg Last Saved: January 16, 2026, by vaghela4623 Plotted: January 19, 2026, 4:30:55 PM by Vaghela, Devdatabah
 Scale: 1:1000
 Plan #: 17741



CLIENT



COPYRIGHT

This drawing has been prepared solely for the intended use, thus any reproduction or distribution for any purpose other than authorized by Arcadis is forbidden. Written dimensions shall have precedence over scaled dimensions. Contractors shall verify and be responsible for all dimensions and conditions on the job, and Arcadis shall be informed of any variations from the dimensions and conditions shown on the drawing. Shop drawings shall be submitted to Arcadis for general conformance before proceeding with fabrication.

Arcadis Professional Services (Canada) Inc.
formerly (B) Group Professional Services (Canada) Inc.

ISSUES

| No. | DESCRIPTION | DATE |
|-----|--------------------|------------|
| 1 | ISSUED FOR SPRA | 2025-08-21 |
| 2 | RE-ISSUED FOR SPRA | 2026-01-19 |



CONSULTANTS



SEAL



PRIME CONSULTANT



333 Preston Street - Suite 500
Ottawa ON K1S 5N4 Canada
tel 613 225 1311
www.arcadis.com

PROJECT

**KILLAM - CITY PARK PHASE 2
INTERIM PARKING**

200 FRONTIER PATH PVT.

PROJECT NO:

38729

DRAWN BY:

D.D. / E.H.

CHECKED BY:

M.P.

PROJECT MGR:

T.R.B.

APPROVED BY:

T.R.B.

SHEET TITLE

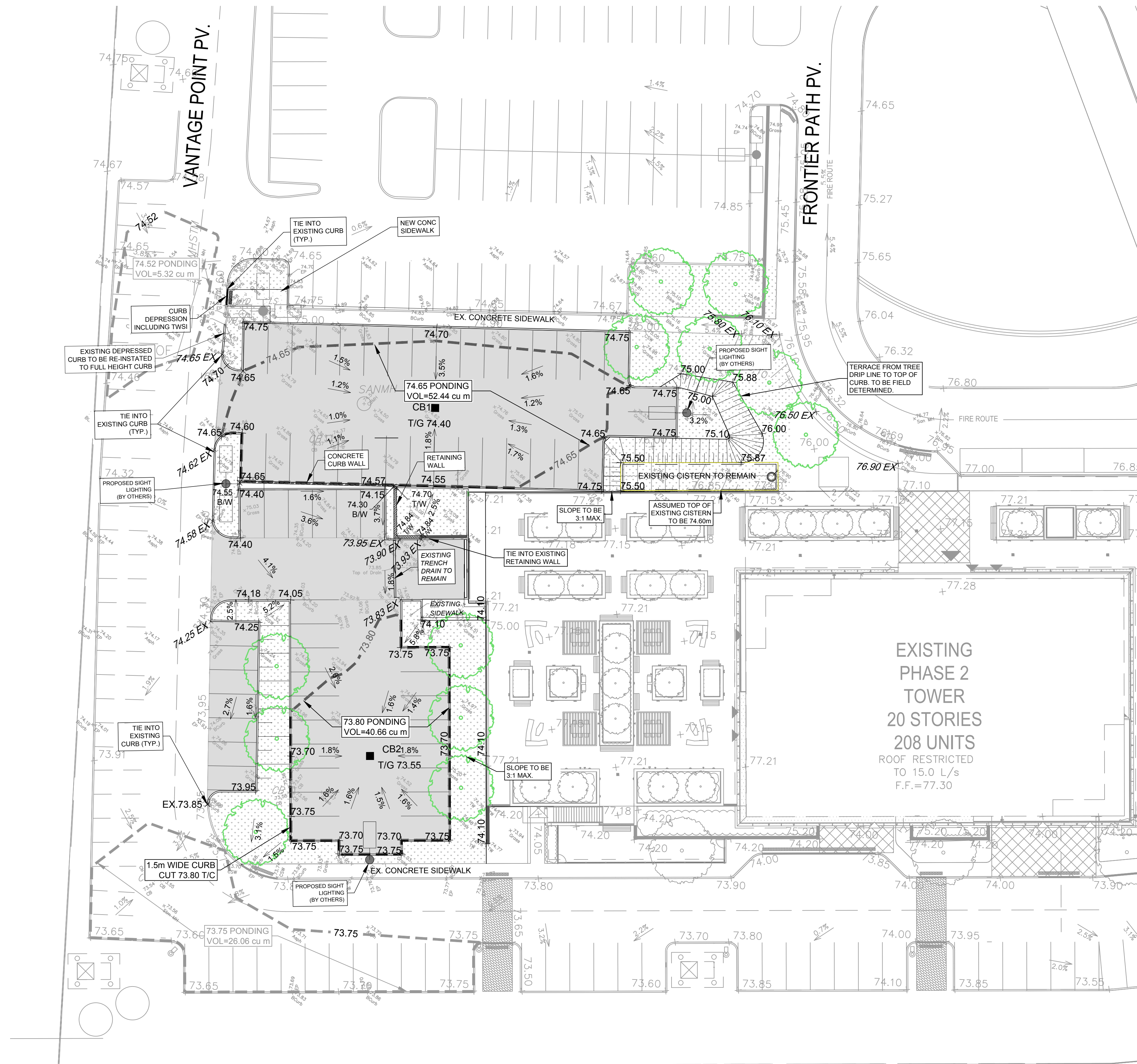
GRADING PLAN

SHEET NUMBER

C-202

ISSUE

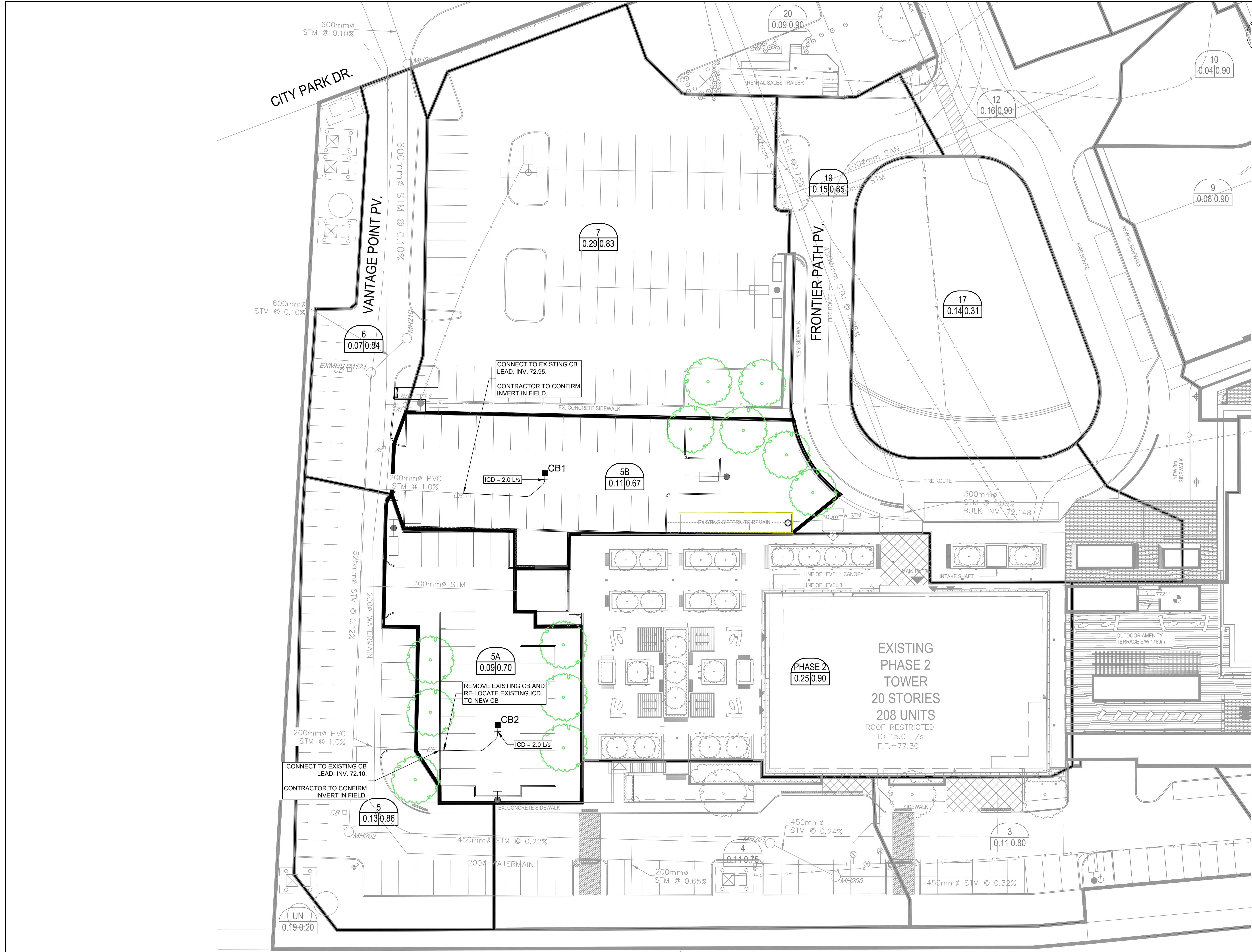
1



GRADING LEGEND

- SLOPE C/W FLOW DIRECTION
- PROPOSED SPOT GRADE
- RETAINING WALL C/W TOP OF WALL
- CONCRETE CURB WALL C/W ASPHALT AND BOTTOM (SURFACE) OF WALL
- FULL STATIC PONDING ELEVATION
- PARKING PAVEMENT AREA
- PROPOSED TERRACING (MAX 3:1)
- SODDED AREA
- TOPOGRAPHICAL SURVEY BY ARCADIS JULY 18th 2025
- 150mm HIGH CONCRETE CURB (UNLESS NOTED OTHERWISE)

File Location: \\38729-Sherway\CA\5.9 Drawings\58\Killam\Killam\Interim\Plan\Grading\Grading Plan.dwg Last Saved: January 19, 2026, 6:23:04 PM by Vignhelia, Devathian
Plan #: 17741



CLIENT

COPYRIGHT
 This drawing has been prepared solely for the intended use, thus any reproduction or distribution for any purpose other than authorized by Arcadis is forbidden. Written dimensions shall have precedence over scaled dimensions. Contractors shall verify and be responsible for all dimensions and conditions on the job, and Arcadis shall be informed of any variations from the dimensions and conditions shown on the drawing. Shop drawings shall be submitted to Arcadis for general conformance before proceeding with fabrication.

Arcadis Professional Services (Canada) Inc.
 formerly (B) Group Professional Services (Canada) Inc.

| ISSUES | | |
|--------|--------------------|------------|
| No. | DESCRIPTION | DATE |
| 1 | ISSUED FOR SPRA | 2025-08-21 |
| 2 | RE-ISSUED FOR SPRA | 2026-01-19 |

CONSULTANTS

SEAL

PRIME CONSULTANT

 333 Preston Street - Suite 500
 Ottawa ON K1S 5N4 Canada
 tel 613 225 1311
 www.arcadis.com

PROJECT
 KILLAM - CITY PARK PHASE 2
 INTERIM PARKING
 200 FRONTIER PATH PVT.

PROJECT NO: 38729
DRAWN BY: D.D. / E.H. **CHECKED BY:** M.P.
PROJECT MGR: T.R.B. **APPROVED BY:** T.R.B.

SHEET TITLE
 STORM DRAINAGE AREA PLAN

| | |
|------------------------------|-------------------|
| SHEET NUMBER C-502 | ISSUE 1 |
|------------------------------|-------------------|

File Location: \\38729-SM\CityPark\Drawings\Storm\Storm Drainage Area Plan.dwg Last Saved: January 16, 2026, by: vnghehd4623 Plotted: January 16, 2026, 3:46:47 PM by: Vnghehd, Deydabhai

