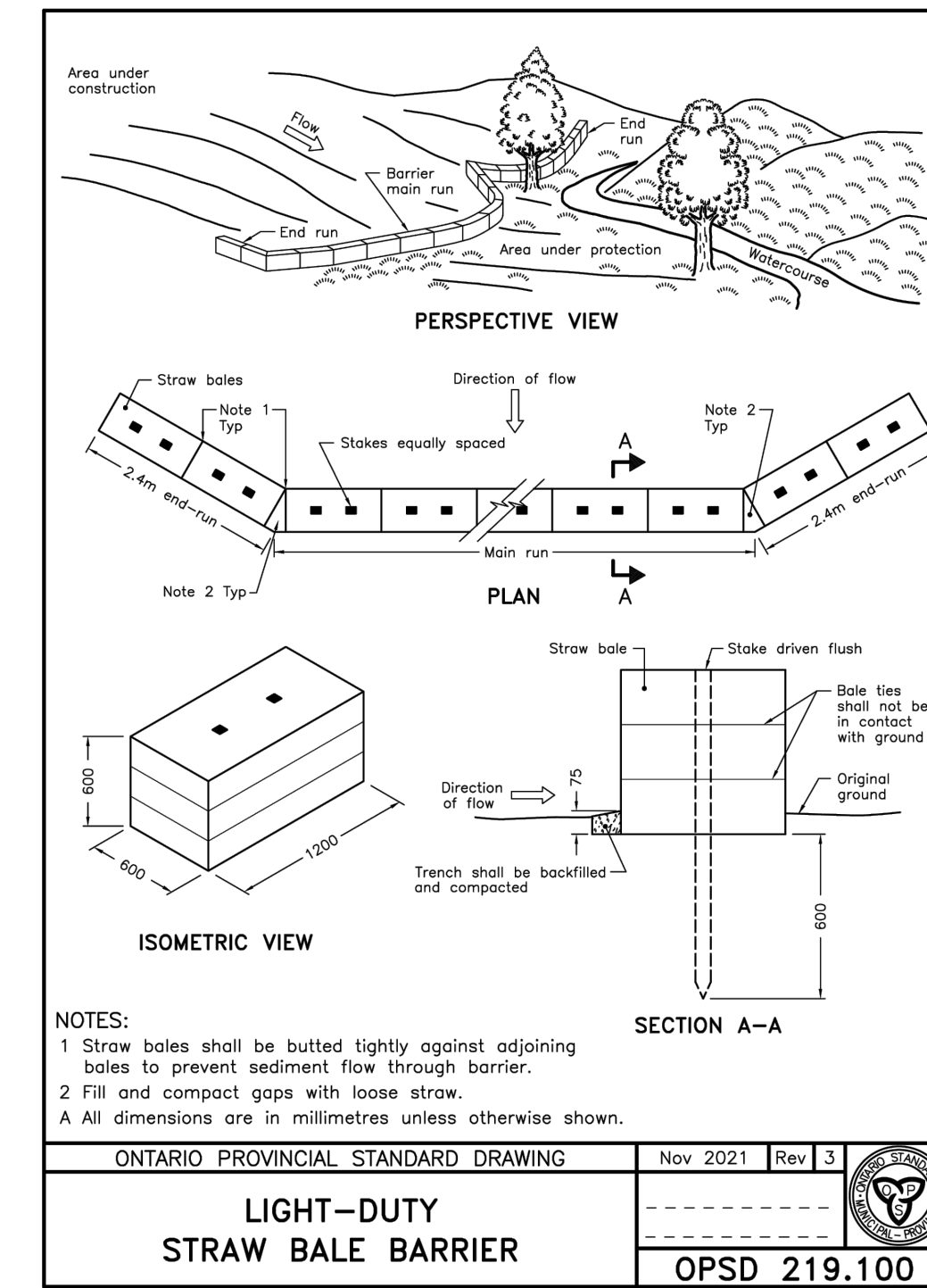
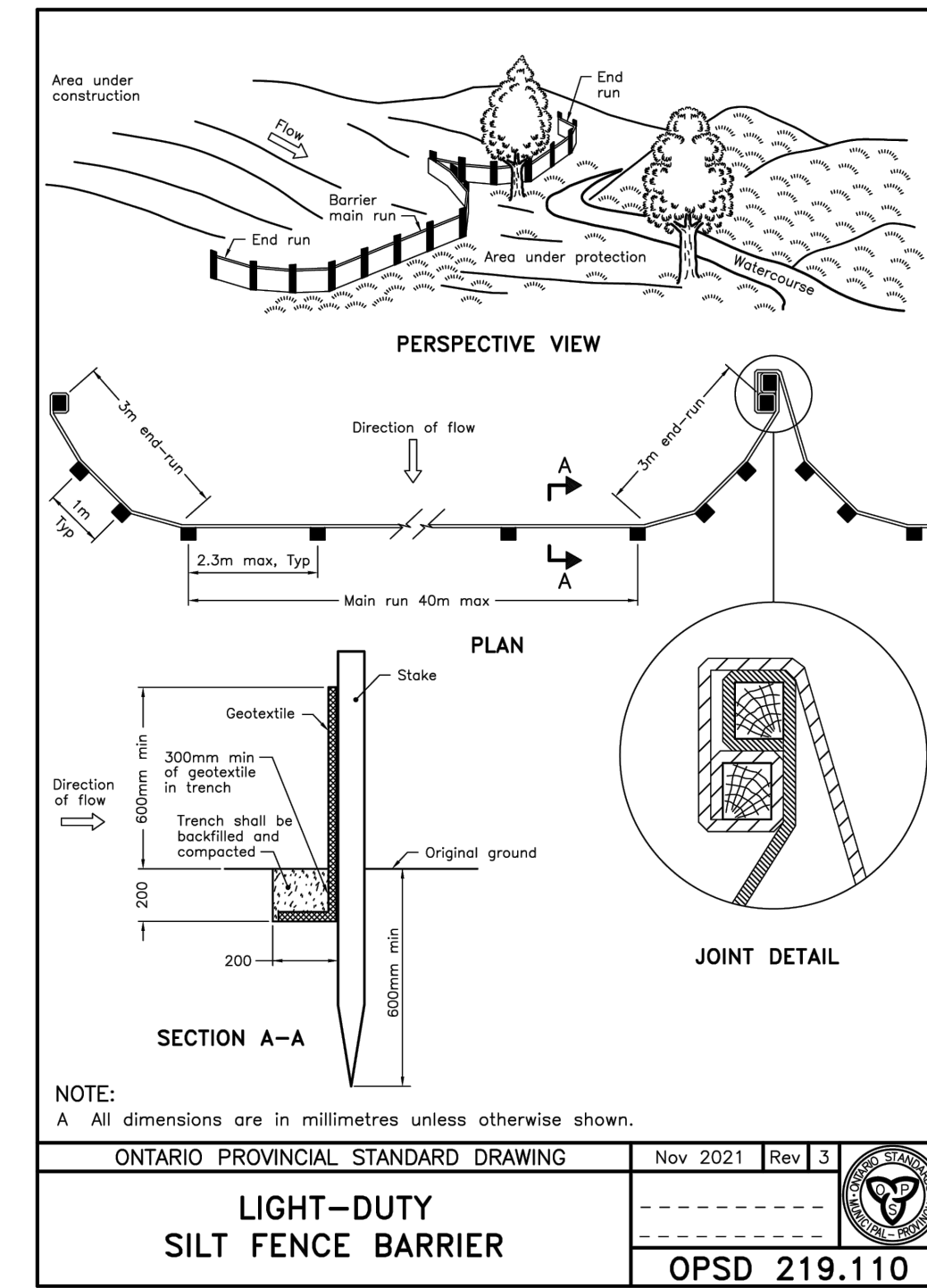


**APPROVED**  
By Adam Brown at 12:26 pm, Apr 29, 2026

**ADAM BROWN**  
MANAGER, DEVELOPMENT REVIEW RURAL  
PLANNING, DEVELOPMENT & BUILDING SERVICES  
DEPARTMENT, CITY OF OTTAWA

**EROSION & SEDIMENT CONTROL NOTES:**

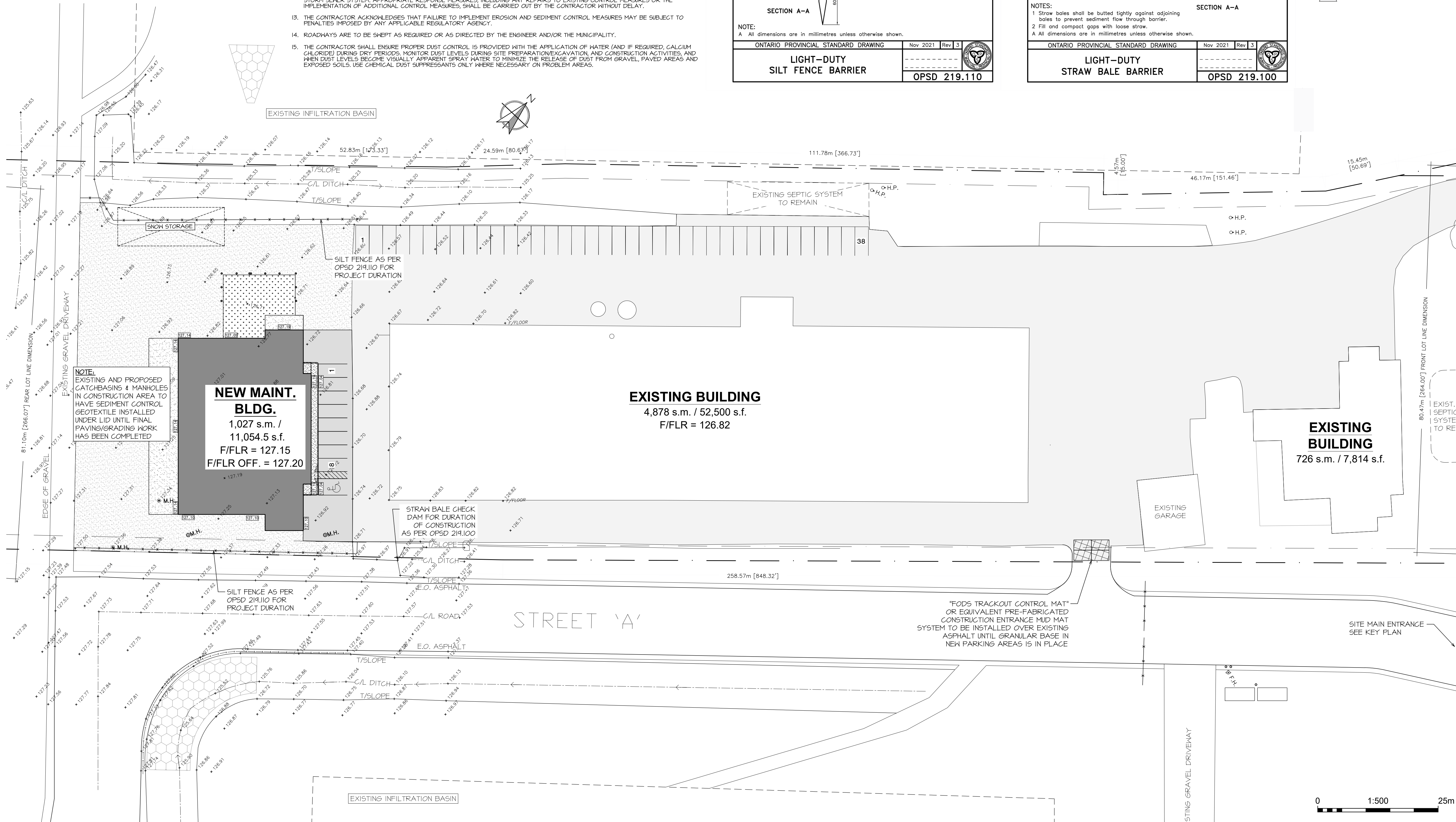
- PROVIDE TEMPORARY DRAINAGE AND PUMPING AS NECESSARY TO KEEP EXCAVATIONS AND SITE FREE FROM WATER. TEMPORARY PUMPING TO BE COMPLETED IN ACCORDANCE WITH OPS 510 'CONSTRUCTION SPECIFICATIONS FOR CONTROL OF WATER FROM DEWATERING OPERATIONS'. DO NOT DISCHARGE WATER CONTAINING SUSPENDED MATERIALS INTO WATERCOURSES, SEWER OR DRAINAGE SYSTEMS. CONTROLLED DISPOSAL OR RUNOFF WATER CONTAINING SUSPENDED MATERIALS OR OTHER HARMFUL SUBSTANCES MUST BE COMPLETED IN ACCORDANCE WITH FEDERAL, PROVINCIAL, AND MUNICIPAL REQUIREMENTS.
- WORKS AROUND WATERCOURSE AND WETLANDS SHALL BE COMPLETED IN ACCORDANCE WITH THE MOST RECENT VERSION OF THE CONSERVATION AUTHORITY, MUNICIPAL, PROVINCIAL, AND FEDERAL BEST MANAGEMENT PRACTICES. PILING OPERATIONS SHALL NOT BE CONDUCTED AND PILING TANK SHALL NOT BE LOCATED WITHIN 30CM OF A ROADSIDE DITCH, MUNICIPAL DRAIN, NATURAL WATERCOURSE, WETLAND, OR FIELD TILE.
- INSTALLATION OF TEMPORARY EROSION & SEDIMENT CONTROL MEASURES SHALL BE COMPLETED IN ACCORDANCE WITH THE CITY OF OTTAWA STANDARD AND THE CONTRACT DRAWINGS.
- THE CONTRACTOR IS RESPONSIBLE FOR MAINTAINING TEMPORARY EROSION AND SEDIMENT CONTROL FEATURES THROUGHOUT THE PROJECT. THE CONTRACTOR IS RESPONSIBLE FOR INSPECTING ALL TEMPORARY EROSION CONTROL STRUCTURES AT MINIMUM ON A WEEKLY BASIS. AFTER EACH RAINFALL, AND AT LEAST DAILY DURING PROLONGED RAINFALL, CONTRACTOR SHALL CLEAR ACCUMULATED SEDIMENT WHEN 50% CAPACITY IS REACHED. SILT FENCES ARE TO BE INSTALLED WHERE SHOWN ON PLAN. STRAW BALES SHALL BE INSTALLED WHERE SHOWN ON PLAN, AND WHERE FLOW IS CHANNELLED IN A PARTICULAR DIRECTION TO THE RECEIVING COURSE OR WHERE WARRANTED. SILT FENCE SHALL NOT BE PERMITTED IN AREAS OF STANDING WATER.
- IF A DEFICIENCY OR DAMAGE TO ANY EROSION OR SEDIMENT CONTROL MECHANISM IS FOUND, THE CONTRACTOR IS TO ALERT ENGINEER IMMEDIATELY, AND CONTRACTOR IS TO UNDERTAKE REPAIR AS SOON AS FEASIBLE.
- TEMPORARY CONSTRUCTION ENTRANCE TO PRIVATE ROAD. CONSTRUCTION ENTRANCE TO CONSIST OF A PRE-FABRICATED 'FOODS TRACKOUT CONTROL MAT' OR EQUIVALENT PRE-FABRICATED CONSTRUCTION ENTRANCE MUD MAT SYSTEM TO BE INSTALLED UNTIL GRANULAR BASE IN NEW PARKING AREAS IS IN PLACE. IF THE CONSTRUCTION ENTRANCE DOES NOT SUFFICIENTLY PREVENT SEDIMENT FROM BEING TRACKED ONTO ADJACENT ROADWAYS, A WHEEL WASH MAY BE REQUIRED.
- THE CONTRACTOR SHALL IMPLEMENT BEST MANAGEMENT PRACTICES, TO PROVIDE FOR PROTECTION OF THE AREA DRAINAGE SYSTEM AND THE RECEIVING WATERCOURSE, DURING CONSTRUCTION ACTIVITIES. THE CONTRACTOR ACKNOWLEDGES THAT FAILURE TO IMPLEMENT APPROPRIATE EROSION AND SEDIMENT CONTROL MEASURES MAY BE SUBJECT TO PENALTIES IMPOSED BY ANY APPLICABLE REGULATORY AGENCY.
- TO PREVENT SURFACE EROSION FROM ENTERING ANY STORM SEWER SYSTEM DURING CONSTRUCTION, FILTER BAGS WILL BE PLACED UNDER GRATES OF AFFECTED NEARBY CATCHBASINS AND STRUCTURES.
- TO LIMIT EROSION, MINIMIZE THE AMOUNT OF EXPOSED SOILS AT ANY GIVEN TIME, RE-VEGETATE EXPOSED AREAS AND SLOPES AS SOON AS POSSIBLE AND PROTECT EXPOSED SLOPES WITH NATURAL OR SYNTHETIC MULCHES.
- FOR MATERIAL STOCKPILING, MINIMIZE THE AMOUNT OF EXPOSED MATERIALS AT ANY GIVEN TIME, APPLY TEMPORARY SEEDING, TARP, COMPACTION AND/OR SURFACE ROUGHENING AS REQUIRED TO STABILIZE STOCKPILED MATERIALS THAT WILL NOT BE USED WITHIN 14 DAYS.
- THE SEDIMENT CONTROL MEASURES SHALL ONLY BE REMOVED WHEN, IN THE OPINION OF THE ENGINEER, THE MEASURES ARE NO LONGER REQUIRED. NO CONTROL MEASURES MAY BE PERMANENTLY REMOVED WITHOUT PRIOR AUTHORIZATION FROM THE ENGINEER.
- THE CONTRACTOR SHALL IMMEDIATELY REPORT TO THE ENGINEER ANY ACCIDENTAL DISCHARGES OF SEDIMENT MATERIAL INTO ANY STORM SEWER SYSTEM. APPROPRIATE RESPONSE MEASURES INCLUDING ANY REPAIRS TO EXISTING CONTROL MEASURES OR THE IMPLEMENTATION OF ADDITIONAL CONTROL MEASURES, SHALL BE CARRIED OUT BY THE CONTRACTOR WITHOUT DELAY.
- THE CONTRACTOR ACKNOWLEDGES THAT FAILURE TO IMPLEMENT EROSION AND SEDIMENT CONTROL MEASURES MAY BE SUBJECT TO PENALTIES IMPOSED BY ANY APPLICABLE REGULATORY AGENCY.
- ROADWAYS ARE TO BE SKEPT AS REQUIRED OR AS DIRECTED BY THE ENGINEER AND/OR THE MUNICIPALITY.
- THE CONTRACTOR SHALL ENSURE PROPER DUST CONTROL IS PROVIDED WITH THE APPLICATION OF WATER (AND IF REQUIRED, CALCIUM CHLORIDE) DURING DRY PERIODS. MONITOR DUST LEVELS DURING SITE PREPARATION, EXCAVATION, AND CONSTRUCTION ACTIVITIES, AND WHEN DUST LEVELS BECOME VISIBLY APPARENT SPRAY WATER TO MINIMIZE THE RELEASE OF DUST FROM GRAVEL, PAVED AREAS AND EXPOSED SOILS. USE CHEMICAL DUST SUPPRESSANTS ONLY WHERE NECESSARY ON PROBLEM AREAS.



**SITE LEGEND:**

- + 00.00 - EXIST. GRADE ELEVATION
- 00.00 - PROPOSED GRADE ELEVATION
- (00.00) - PROPOSED DITCH ELEVATION
- - FLOW / DIRECTION
- H - HYDRO
- STM - STORM PIPE
- SN - SANITARY PIPE
- W - WATER LINE
- G - GAS LINE
- B - BELL LINE
- X - FENCE
- M.H. - MAN HOLE
- H.P. - HYDRO POLE
- LS - LIGHT STANDARD
- F.H. - FIRE HYDRANT
- C.B. - CATCH BASIN
- D.I. - DITCH INLET
- ↔ - ACCESS / ENTRANCE
- ↔ - WATER LINE CURB STOP
- SOD / GRASS / LANDSCAPE
- EXISTING GRAVEL
- #? - DENOTES REVISION NUMBER

- COPYRIGHT © 2025 TaskForce Engineering Inc.**  
THIS DRAWING AND DESIGN IS THE PROPERTY OF TaskForce Engineering Inc. AND SHALL NOT BE COPIED, REPRODUCED, ALTERED OR DISTRIBUTED IN WHOLE OR IN PART, WITHOUT THE EXPRESSED WRITTEN CONSENT OF TaskForce Engineering Inc.
- THE CONTRACTOR SHALL VERIFY AND BE RESPONSIBLE FOR ALL DIMENSIONS AND SHALL REPORT ANY DISCREPANCY TO TaskForce Engineering Inc. BEFORE PROCEEDING WITH ANY WORK.
- SITE PLAN NOTES:**
- ALL DIMENSIONS & NOTES MUST BE VERIFIED ON JOB SITE BY CONTRACTOR. ANY DISCREPANCIES SHALL BE REPORTED TO THE OWNER.
  - ALL UNDERGROUND WORK AND ABOVE GROUND WORK TO BE DONE IN ACCORDANCE WITH CURRENT CITY PLANS, STANDARDS & SPECS.
  - THE OWNER COVENANTS & AGREES NOT TO MAKE A MATERIAL CHANGE OR CAUSE A MATERIAL CHANGE TO BE MADE TO A PLAN, SPECIFICATION, DOCUMENT OR OTHER INFORMATION ON THE BASIS OF WHICH THIS DRAWING WAS APPROVED BY THE CITY, WITHOUT NOTIFYING, FILING DETAILS WITH AND OBTAINING THE WRITTEN AUTHORIZATION OF THE CITY.
  - EXISTING ASPHALT:
- HEAVY DUTY ASPHALT:**
- 50mm HL3
  - 40mm HL3
  - 150mm (6") GRANULAR 'A', TYPE II
  - 300mm (12") GRANULAR 'B', TYPE I
- ALL GRANULAR MATERIAL SHALL BE PLACED IN 300mm LIFTS AND COMPACTED TO 100% STANDARD PROCTOR.
  - INSTALL CONCRETE SIDEWALKS IN ACCORDANCE WITH OPSD-303.03 AND OPSD-303.04 FOR SIDEWALK RAMP.
  - SILT FENCE AS REQUIRED PER OPSD 214.10
  - GRASSED AREAS SHALL BE SOD AND 4" MINIMUM TOPSOIL. HYDROSEED FOR SLOPES EXCEEDING 4:1 SOD & STAKE.
  - CONTRACTOR SHALL OBTAIN A ROAD WORK PERMIT FROM THE CITY OF OTTAWA PRIOR TO COMMENCING ANY WORK WITHIN THE MUNICIPAL ROAD ALLOWANCE.
  - UTILITY CUTS WITHIN THE MUNICIPAL ROAD ALLOWANCE TO BE RECONSTRUCTED USING HEAVY DUTY ASPHALT STANDARDS.
  - CONNECTION OF ALL SANITARY AND STORM SEWERS TO CONFORM TO OPSD-1006.010
  - NO LIGHTING WILL BE DIRECTED ONTO ADJACENT PROPERTIES BUT WILL ONLY BE DIRECTED ONTO THE SUBJECT LANDS
  - ALL CURBING IN ACCORDANCE WITH OPSD - 600.110
  - BARRIER FREE SIGNAGE FOR PARKING AREA TO BE IN ACCORDANCE WITH CBC 3.8.3.1 (i)
- OPSD REFERENCES:**
- RIGID PIPE BEDDINGS, COVER AND BACKFILL OPSD - 802.030 EXCEPT:
    - USE "CLASS B-BEDDING" DETAIL ONLY FOR ALL PIPE BEDDINGS EXCEPT "CLASS C" - BEDDING" DETAIL.
    - THE "GRANULAR BEDDING MATERIAL" IS TO BE GRANULAR "A" CRUSHED MATERIAL.
    - "COVER MATERIAL" IS TO BE SAND FILL.
    - DELETE "50 mm" FROM "NOTE 1" AND INSERT 225 mm FOR THE MINIMUM BEDDING DEPTH.
    - FOR A "NET TRENCH" CONDITION AS DETERMINED BY THE CITY ENGINEER:
      - "GRANULAR BEDDING MATERIAL" IS TO BE AN "H.L. COARSE" GRADATION, CRUSHED LIMESTONE MATERIAL, AND
      - "COVER MATERIAL" IS TO BE LIMESTONE SCREENINGS OR GRANULAR "A" CRUSHED MATERIAL.
  - PRECAST CONCRETE MAINTENANCE HOLE OPSD - 101.010 1200 mm DIAMETER. EXCEPT USE PRECAST MONOLITHIC BASE ONLY.
  - MAINTENANCE HOLE STEPS, HOLLOW OPSD - 405.010 EXCEPT DELETE "RECTANGULAR STAINLESS STEEL" STEP DETAILS. CAST IRON SQUARE FRAME WITH CIRCULAR CLOSED OR OPEN.
  - COVER FOR MAINTENANCE HOLES OPSD - 401.010 EXCEPT DELETE "TYPE 'B' OPEN COVER".
  - CAST-IN-PLACE MAINTENANCE HOLE DROP OPSD - 1003.010 STRUCTURE TEE. EXCEPT THE INVERT OF THE INLET END OF THE 90 DEGREE BEND IS TO BE PLACED AT THE 'SPRINGLE' OF THE MAIN SEWER PIPE.
  - SEWER SERVICE CONNECTIONS FOR RIGID OPSD - 1006.010 MAIN PIPE SEWER EXCEPT:
    - THE BEDDINGS AND COVER MATERIALS ARE TO BE SUPPLIED AND INSTALLED IN ACCORDANCE WITH OPSD-802.030.
    - FACTORY MADE TEES OR WYES ARE NOT REQUIRED FOR SANITARY SERVICE CONNECTIONS TO THE MAIN SEWER PIPE UNLESS SPECIFIED.
  - CONCRETE SIDEWALK OPSD - 310.010
  - CONCRETE BARRIER CURB WITH WIDE OPSD - 600.010 GUTTER
  - CONCRETE BARRIER CURB OPSD - 600.110
- | No. | DATE        | REVISION(S)                      | BY  |
|-----|-------------|----------------------------------|-----|
| 2   | JAN. 29/26  | RE-ISSUED FOR SITE PLAN APPROVAL | ERB |
| 1   | SEPT. 23/25 | ISSUED FOR SITE PLAN APPROVAL    | ERB |



- OPSD REFERENCES:**
- RIGID PIPE BEDDINGS, COVER AND BACKFILL OPSD - 802.030 EXCEPT:
    - USE "CLASS B-BEDDING" DETAIL ONLY FOR ALL PIPE BEDDINGS EXCEPT "CLASS C" - BEDDING" DETAIL.
    - THE "GRANULAR BEDDING MATERIAL" IS TO BE GRANULAR "A" CRUSHED MATERIAL.
    - "COVER MATERIAL" IS TO BE SAND FILL.
    - DELETE "50 mm" FROM "NOTE 1" AND INSERT 225 mm FOR THE MINIMUM BEDDING DEPTH.
    - FOR A "NET TRENCH" CONDITION AS DETERMINED BY THE CITY ENGINEER:
      - "GRANULAR BEDDING MATERIAL" IS TO BE AN "H.L. COARSE" GRADATION, CRUSHED LIMESTONE MATERIAL, AND
      - "COVER MATERIAL" IS TO BE LIMESTONE SCREENINGS OR GRANULAR "A" CRUSHED MATERIAL.
  - PRECAST CONCRETE MAINTENANCE HOLE OPSD - 101.010 1200 mm DIAMETER. EXCEPT USE PRECAST MONOLITHIC BASE ONLY.
  - MAINTENANCE HOLE STEPS, HOLLOW OPSD - 405.010 EXCEPT DELETE "RECTANGULAR STAINLESS STEEL" STEP DETAILS. CAST IRON SQUARE FRAME WITH CIRCULAR CLOSED OR OPEN.
  - COVER FOR MAINTENANCE HOLES OPSD - 401.010 EXCEPT DELETE "TYPE 'B' OPEN COVER".
  - CAST-IN-PLACE MAINTENANCE HOLE DROP OPSD - 1003.010 STRUCTURE TEE. EXCEPT THE INVERT OF THE INLET END OF THE 90 DEGREE BEND IS TO BE PLACED AT THE 'SPRINGLE' OF THE MAIN SEWER PIPE.
  - SEWER SERVICE CONNECTIONS FOR RIGID OPSD - 1006.010 MAIN PIPE SEWER EXCEPT:
    - THE BEDDINGS AND COVER MATERIALS ARE TO BE SUPPLIED AND INSTALLED IN ACCORDANCE WITH OPSD-802.030.
    - FACTORY MADE TEES OR WYES ARE NOT REQUIRED FOR SANITARY SERVICE CONNECTIONS TO THE MAIN SEWER PIPE UNLESS SPECIFIED.
  - CONCRETE SIDEWALK OPSD - 310.010
  - CONCRETE BARRIER CURB WITH WIDE OPSD - 600.010 GUTTER
  - CONCRETE BARRIER CURB OPSD - 600.110
- | No. | DATE        | REVISION(S)                      | BY  |
|-----|-------------|----------------------------------|-----|
| 2   | JAN. 29/26  | RE-ISSUED FOR SITE PLAN APPROVAL | ERB |
| 1   | SEPT. 23/25 | ISSUED FOR SITE PLAN APPROVAL    | ERB |

**TaskForce Engineering Inc.**  
24 Newberry Street  
Suite 201  
Belleville, Ontario  
K8N 3N3  
Voice (613) 966-5600  
Fax (613) 966-5701  
www.taskforce-eng.com

**NEW 11,054 s.f. BUILDING for WASTE MANAGEMENT OF CANADA CORP**  
2413 CARP RD.  
OTTAWA, ON

**EROSION & SEDIMENT CONTROL PLAN**

DATE: JUNE 2025	CONTRACT No.: 2511
CHECKED BY: E. R. BURTT 100515244	DRAWING No.:
DESIGNED BY:	<b>A.1b</b>
DRAWN BY: ERB	
SCALE: AS NOTED	

LICENSED PROFESSIONAL ENGINEER  
Jan. 29/2026  
E. R. BURTT  
100515244  
PROVINCE OF ONTARIO

CITY FILE No. D07-12-25-0116 CITY PLAN No. 19427