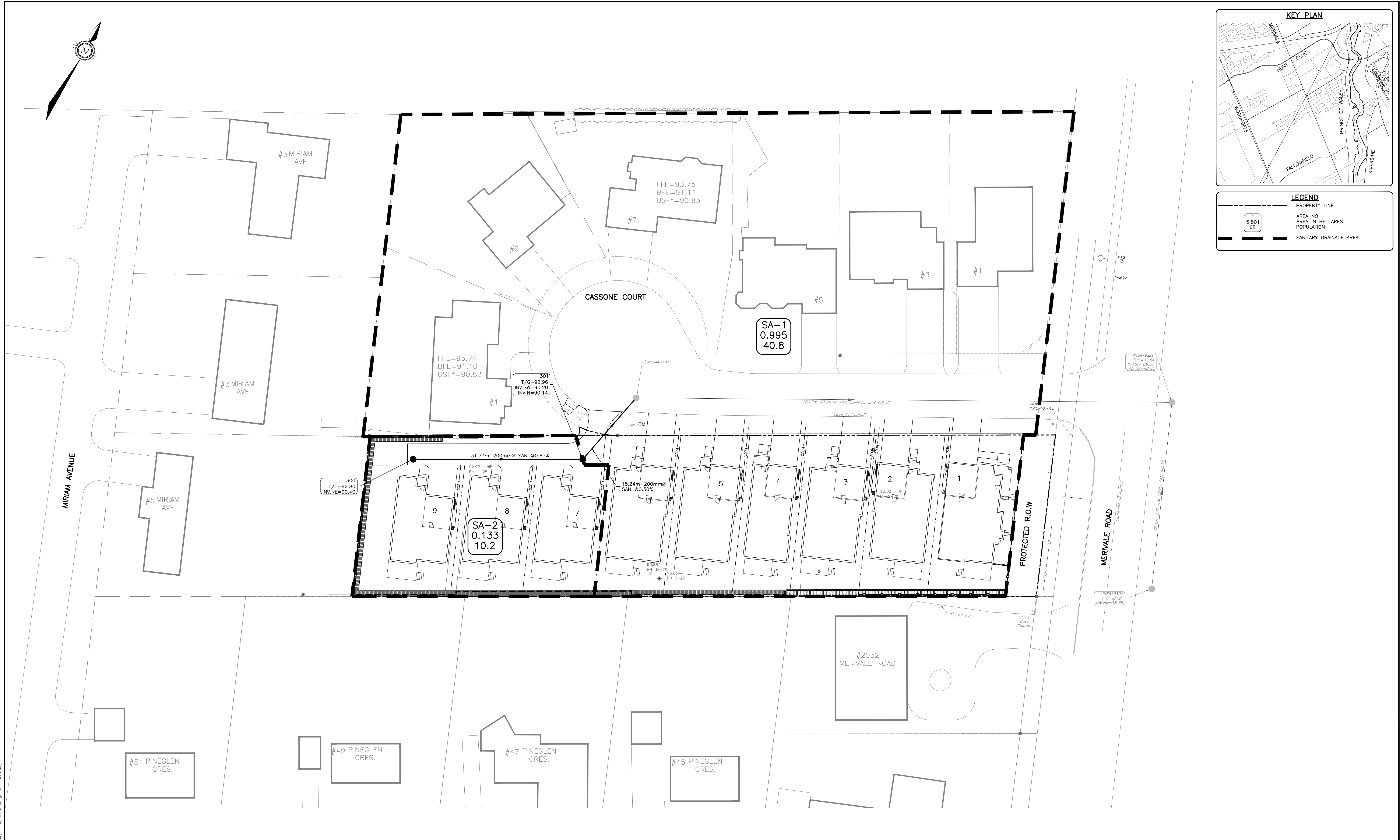


LEGEND

	PROPERTY LINE
	AREA NO AREA IN HECTARES POPULATION
	SANITARY DRAINAGE AREA

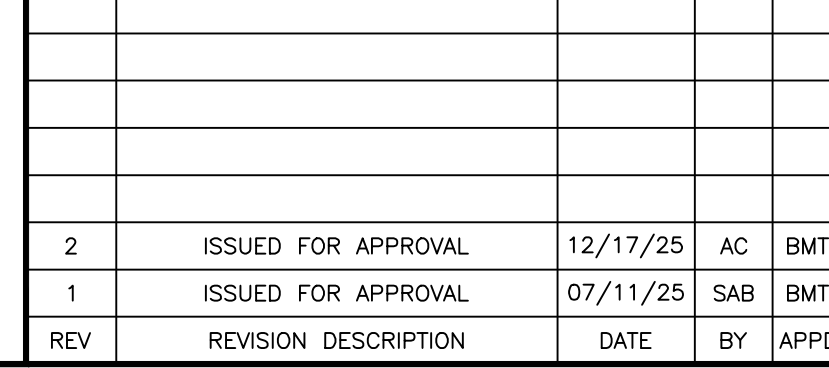


CAUTION
THE POSITION OF ALL POLE LINES, CONDUITS, WATERMANS, SEWERS AND OTHER UNDERGROUND AND OVERGROUND UTILITIES AND STRUCTURES IS NOT NECESSARILY SHOWN ON THE CONTRACT DRAWINGS, AND WHERE SHOWN, THE ACCURACY OF THE POSITION OF SUCH UTILITIES AND STRUCTURES IS NOT GUARANTEED. BEFORE STARTING WORK, DETERMINE THE EXACT LOCATION OF ALL SUCH UTILITIES AND STRUCTURES AND ASSUME ALL LIABILITY FOR DAMAGE TO THEM.

JOB BENCH MARK JBM ▲
FIRE HYDRANT TOP OF SPINDLE ELEVATION=93.57
NORTHING=5020457.01 EASTING=366125.53

TOPOGRAPHIC INFORMATION
PART OF LOT 24, CONCESSION 1 (RIDEAU FRONT)
CITY OF OTTAWA.
TOPOGRAPHIC INFORMATION PROVIDED BY FAIRHALL MOFFATT & WOODLAND LIMITED O.L.S (TP_AE175.DWG) SURVEY DATED AUGUST 29, 2024.
COORDINATES: (SMARTNET) MTM ZONE 9, NAD83 CSRS (2010).

REV	REVISION DESCRIPTION	DATE	BY	APPD
2	ISSUED FOR APPROVAL	12/17/25	AC	BMT
1	ISSUED FOR APPROVAL	07/11/25	SAB	BMT



DESIGNED BY: [Signature]

REVIEWED BY: [Signature]

exp Services Inc.
1-877-388-1899 | +1-613-225-7330
3625 Supermarket Drive, Unit 100
Ottawa, ON K2B 8H6
Canada
www.exp.com

• BUILDINGS • EARTH & ENVIRONMENT • ENERGY •
• INDUSTRIAL • INFRASTRUCTURE • SUSTAINABILITY •



CLIENT PEGASUS DEVELOPMENT CORP.
1914 MERIVALE ROAD
OTTAWA, ON. K2G 1E8

PROJECT CASSONE COURT
2028 MERIVALE ROAD
OTTAWA, ONTARIO

TITLE SANITARY DRAINAGE AREA PLAN

DRAWING No. C600

PROJECT No.	OTT-24015379-AG
SURVEY	FMW
DATE	MARCH 28, 2025
DRAWING No.	C600

File: 20250328_1914MerivaleRoad_SanitaryDrainage.dwg
 User: sward/11/2025 9:17:11 AM
 Plot: 20250328_1914MerivaleRoad_SanitaryDrainage.dwg
 Plotter: HP DesignJet T1200
 Plot Device: HP DesignJet T1200
 Plot Date: 20250328 9:17:11 AM
 Plot Time: 0:00:00
 Plot User: sward