

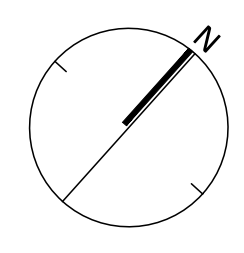


RICHCRAFT
KANATA WEST BLOCK 1
 815 Roger Griffiths Ave., Ottawa, ON



LIST OF DRAWINGS:

- L1.0 - LANDSCAPE PLAN
- L1.1 - TREE CANOPY CALCULATIONS AND SOIL VOLUMES
- L2.0 - DETAILS
- L2.1 - DETAILS
- L2.2 - DETAILS



KEYMAP
 1:500

KEY	BOTANICAL NAME	COMMON NAME	QTY	SIZE	REMARKS	NATIVE
DECIDUOUS TREES - MEDIUM (8-14M HEIGHT) - TOTAL: 22 (CITY OWNED)						
AG	AESCULUS GLABRA	OHIO BUCKEYE	4	50mm	B&B	Y
ARR	ACER RUBRUM 'REDPOINTE'	REDPOINTE RED MAPLE	3	50mm	B&B	N
CL	CERCIDIPHYLLUM JAPONICUM	KATSURA TREE	2	50mm	B&B	N
CI	CLADRASTIS LUTEA	YELLOWWOOD	4	50mm	B&B	Y
GB	GINGKO BILOBA 'AUTUMN GOLD'	AUTUMN GOLD GINGKO	3	50mm	B&B	N
OV	Ostrya virginiana	IRONWOOD	3	50mm	B&B	Y
SD	SORBUS DECORA	SHOWY MOUNTAIN ASH	3	50mm	B&B	Y

KEY	BOTANICAL NAME	COMMON NAME	QTY	SIZE	REMARKS	NATIVE
DECIDUOUS TREES - MEDIUM (8-14M HEIGHT) - TOTAL: 55 (PRIVATELY OWNED)						
AG	AESCULUS GLABRA	OHIO BUCKEYE	8	50mm	B&B	Y
ARR	ACER RUBRUM 'REDPOINTE'	REDPOINTE RED MAPLE	8	50mm	B&B	N
CB	CARPINUS BETULUS 'EMERALD AVENUE'	EMERALD AVENUE HORNBAM	7	50mm	B&B	N
CI	CERCIDIPHYLLUM JAPONICUM	KATSURA TREE	4	50mm	B&B	N
CL	CLADRASTIS LUTEA	YELLOWWOOD	5	50mm	B&B	Y
GB	GINGKO BILOBA 'AUTUMN GOLD'	AUTUMN GOLD GINGKO	7	50mm	B&B	N
OV	Ostrya virginiana	IRONWOOD	6	50mm	B&B	Y
SD	SORBUS DECORA	SHOWY MOUNTAIN ASH	4	50mm	B&B	Y
TH	TILIA X HARVEST GOLD	HARVEST GOLD LINDEN	6	50mm	B&B	N
DECIDUOUS TREES - SMALL (6-8M HEIGHT) - TOTAL: 10 (PRIVATELY OWNED)						
SR	SYRINGA RETICULATA 'IVORY SILK'	JAPANESE LILAC	10	50mm	B&B, TREE FORM	N
CONIFEROUS TREES - TOTAL: 4 (PRIVATELY OWNED)						

KEY	BOTANICAL NAME	COMMON NAME	QTY	SIZE	REMARKS	NATIVE
PG PICEA GLAUCA						
MULTISTEM SHRUBS - TOTAL: 59 (PRIVATELY OWNED)						
Ac	AMELANCHIER CANADENSIS	SERVICEBERRY	16	125cm HT	PT, CLUMP	Y
Al	AMELANCHIER LAEVIS	ALLEGHENY SERVICEBERRY	12	125cm HT	PT, CLUMP	Y
Ca	CORNUS ALTERNIFOLIA	PAGODA DOGWOOD	15	125cm HT	PT, CLUMP	Y
VI	VIBURNUM LENTAGO	NANNYBERRY	16	125cm HT	PT, CLUMP	Y
CONIFEROUS SHRUBS						
JH	JUNIPERUS HORIZONTALIS	CREeping JUNIPER	14	3 GAL	POTTED	
DECIDUOUS SHRUBS						
Cr	CORNUS RACEMOSA	GRAY DOGWOOD	49	3 GAL	POTTED	
Ra	RHUS AROMATICA 'GRO-LOW'	GRO-LOW FRAGRANT SUMAC	30	3 GAL	POTTED	
So	SYMPHORICARPOS ORBICULATUS	CORALBERRY	53	2 GAL	POTTED	
GRASSES/PERENNIALS						
bg	BOUTELOUA GRACILIS	SIDE OATS GRAMA	153	1 GAL	POTTED	
dc	DESCHAMPSIA CESPITOSA	TUFTED HAIR GRASS	96	1 GAL	POTTED	
sh	SPOROBOLUS HETEROLEPSIS	PRAIRIE DROPS EED	32	1 GAL	POTTED	

Contractor shall check all dimensions on the work and report any discrepancy to the Landscape Architect before proceeding. All drawings and specifications are the property of the Landscape Architect and must be returned at the completion of the work. This drawing is not to be used for construction until signed by the Landscape Architect.

LEGEND
 - - - - - PROPERTY LINE
 - - - - - GEOTECHNICAL FOUNDATION SETBACK (4.5M)
FENCING
 - - - - - PRIVACY FENCE

PLANTING
 ○ MEDIUM DECIDUOUS STREET TREE
 ○ MEDIUM DECIDUOUS TREE
 ○ SMALL DECIDUOUS TREE
 ○ CONIFEROUS TREE
 ○ TREE FORM SHRUB (SHALLOW ROOT SYSTEM)
 ○ DECIDUOUS/CONIFEROUS SHRUB
 ○ GRASSES/PERENNIALS
 ○ SODDING

PAVING
 [Pattern] LIGHT DUTY ASPHALT WALKWAYS
 [Pattern] LIGHT DUTY CONCRETE PAVING
 [Pattern] PRECAST UNIT PAVING
 [Pattern] RIVERSTONE
 [Pattern] PRECAST EDGER

DETAIL KEY
 1 - 11 DETAIL NO.
 11 - SHEET NO.

PLANTING KEY
 xx - SHRUB/PERENNIAL SPECIES
 00 - QUANTITY

GENERAL NOTES:

- ALL PLANT MATERIAL SHALL BE NURSERY GROWN STOCK UNLESS OTHERWISE NOTED.
- TREES TO HAVE A MINIMUM 1800 CLEAR STEM ABOVE GRADE.
- CONTRACTOR TO MAKE GOOD ALL EXISTING AREAS DAMAGED BY HIS WORK TO THE SATISFACTION OF THE CONTRACTOR.
- ALL PLANT MATERIAL SHALL BE WARRANTED FOR TWO YEARS FROM THE DATE OF SUBSTANTIAL COMPLETION.
- CONTRACTOR TO VERIFY LOCATION OF ALL SERVICES PRIOR TO ANY EXCAVATION.
- ANY PROPOSED SUBSTITUTIONS OF PLANT SPECIES SHALL BE MADE WITH PLANTS OF EQUIVALENT OVERALL FORM, HEIGHT, BRANCHING HABIT, FLOWER, LEAF, COLOR, FRUIT AND CULTURE AND ONLY AFTER APPROVAL OF THE LANDSCAPE ARCHITECT.

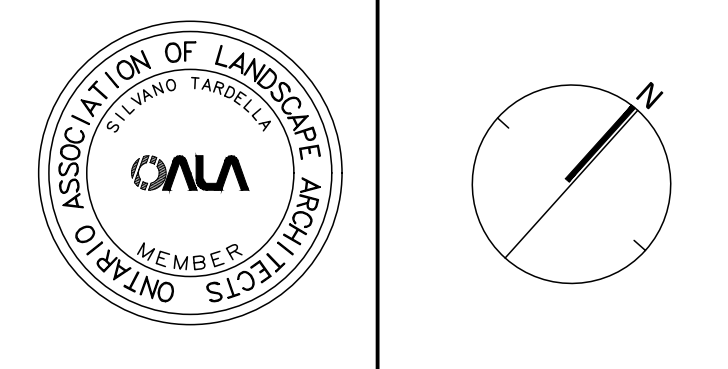
TREE PLANTING IN MARINE CLAY SOILS

- THE LANDSCAPE CONSIDERATIONS CONTAINED WITHIN SEC. 6.8 OF PATERSON GROUP'S GEOTECHNICAL INVESTIGATION, DATED APRIL 7, 2025.
- THIS LANDSCAPE PLAN CONFORMS WITH THE TREE-TO-FOUNDATION SETBACK, SOIL VOLUME, AND SURFACE-GRADING REQUIREMENTS OUTLINED IN THE CITY OF OTTAWA'S GUIDELINES FOR TREE PLANTING IN SENSITIVE MARINE CLAY SOILS (2017), BASED ON THE FINDINGS OUTLINED IN THE PROJECT GEOTECHNICAL REPORT BY PATERSON GROUP (REPORT PG3062-2 DATED APRIL 7, 2025).
 - ADDITIONAL REQUIREMENTS OUTLINED IN THE CITY OF OTTAWA'S GUIDELINES FOR TREE PLANTING IN SENSITIVE MARINE CLAY SOILS (2017), INCLUDING USE DEPTH, FOUNDATION WALL REINFORCEMENT, AND SUBDIVISION GRADING, SHOULD BE CONFIRMED BY THE PROJECT ENGINEER(S).

No.	Description	Date
5	Issued for Second Submission	Feb 05/26
4	Issued for First Submission	Jul 02/25
3	Issued for Coordination	Jun 26/25
2	Issued for Client Review	Jun 19/25
1	Issued for Client Review	Jun 13/25

City Approval Stamp	OWNERSHIP
	RICH CRAFT 2285 St. Laurent Blvd, Suite 201 Ottawa, ON K1G 4K1
	ARCHITECT M. DAVID BLAKEY ARCHITECT INC. 2300 Prince of Wales Dr., Suite 101 Ottawa, Ontario K2E 6Z9
	CIVIL STANTEC CONSULTING LTD. 400-1331 Clyde Avenue, Ottawa ON
	LANDSCAPE ARCHITECT NAK DESIGN STRATEGIES 1285 Wellington St., Ottawa, ON K1V 3A8
	GEOTECHNICAL PATERSON GROUP 9 Auriga Dr., Ottawa, ON K2E 7Y9

PROPERTY INFORMATION
 PLAN 001-107P

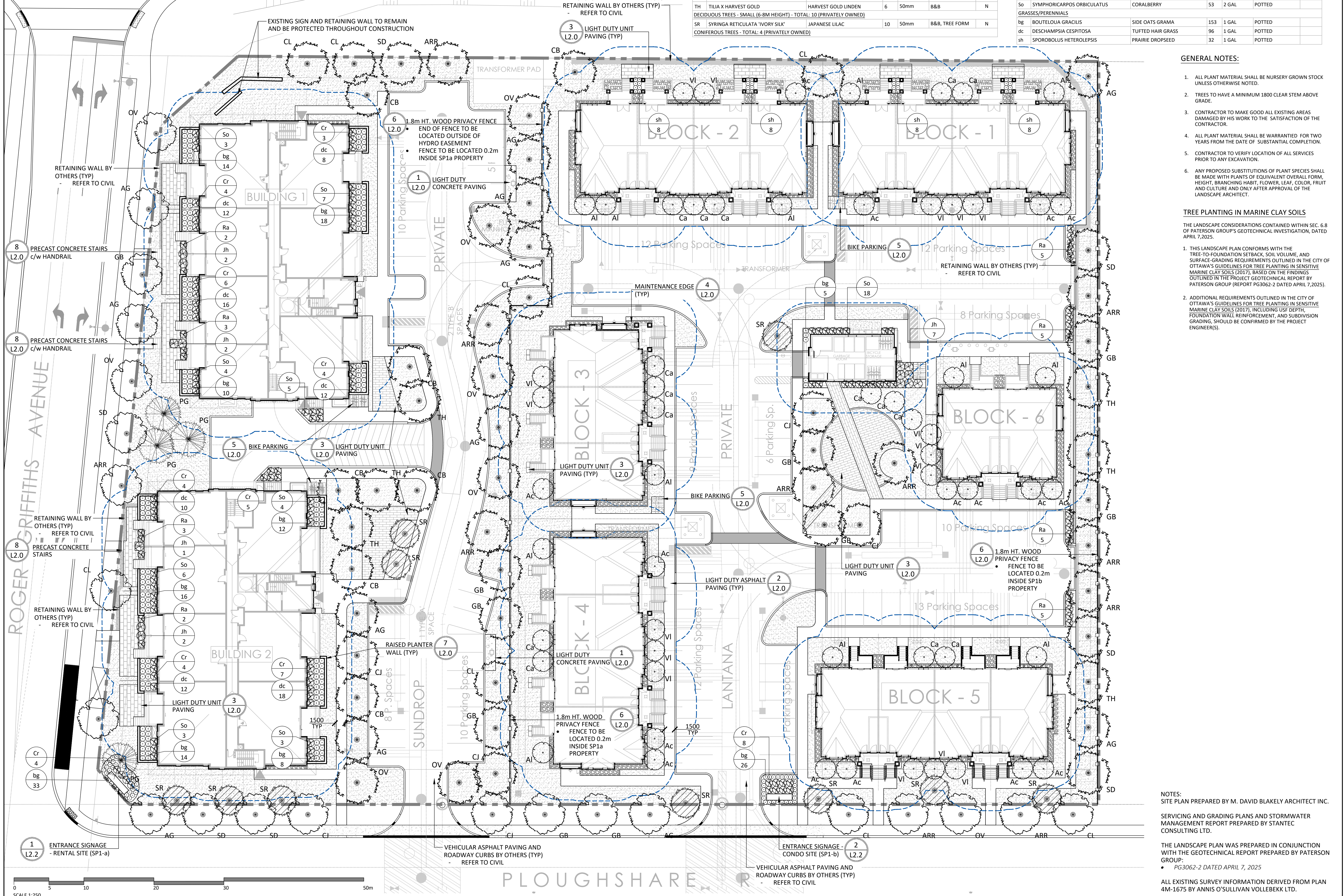


NAK design strategies
 1285 WELLINGTON STREET, OTTAWA, ON K1V 3A8 CANADA
 T 613.237.2345 NAKDESIGNSTRATEGIES.COM
 Project

Kanata West Block 1
 815 Roger Griffiths Ave., Ottawa, ON

Title	Date	Scale	Drawn	Checked	Job No.
LANDSCAPE PLAN	2025-05-26	1:250	SW	MK	25-113

Sheet **L 1.0**

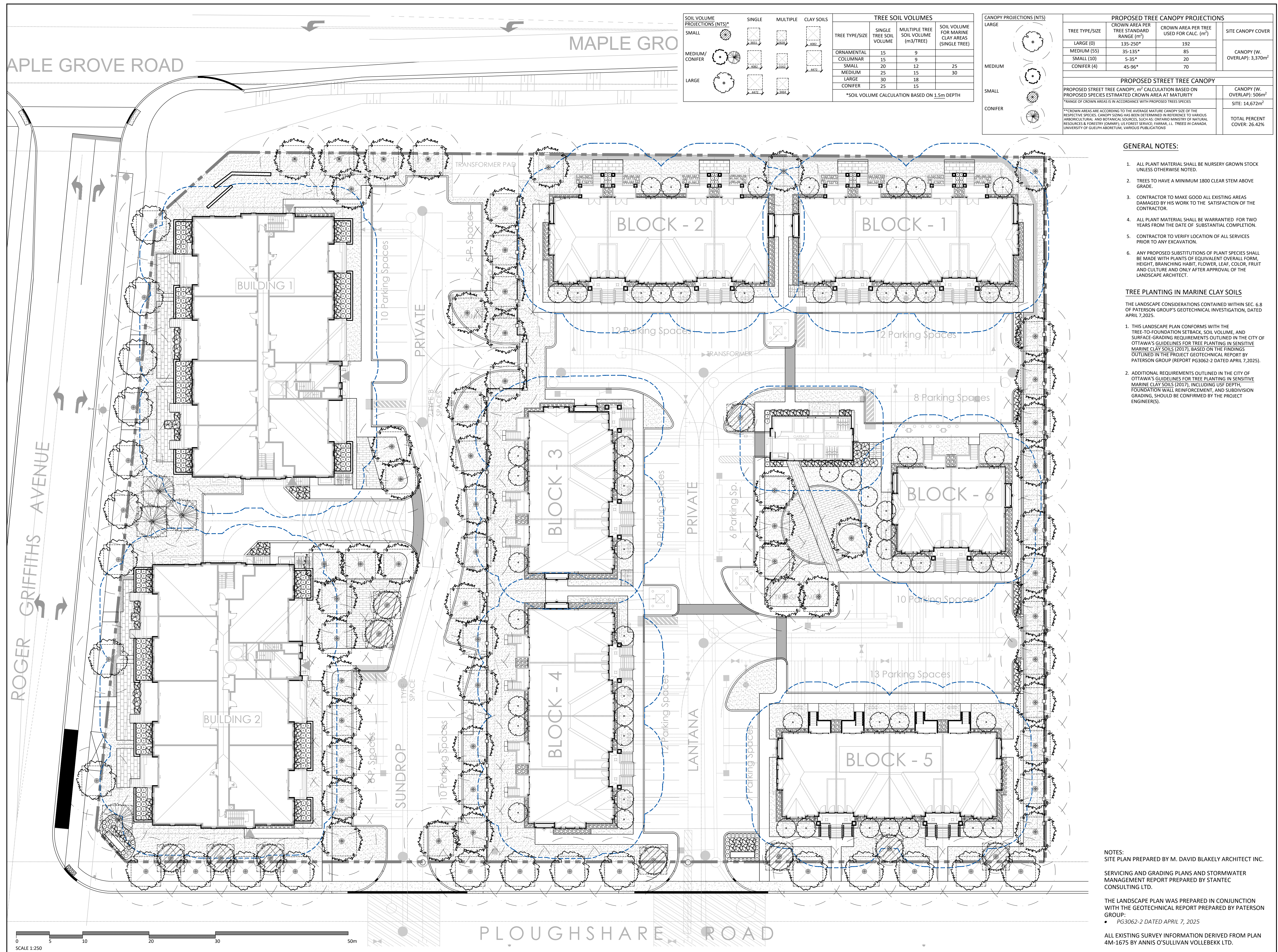


SCALE 1:250

NOTES:
 SITE PLAN PREPARED BY M. DAVID BLAKEY ARCHITECT INC.
 SERVING AND GRADING PLANS AND STORMWATER MANAGEMENT REPORT PREPARED BY STANTEC CONSULTING LTD.
 THE LANDSCAPE PLAN WAS PREPARED IN CONJUNCTION WITH THE GEOTECHNICAL REPORT PREPARED BY PATERSON GROUP:
 PG3062-2 DATED APRIL 7, 2025
 ALL EXISTING SURVEY INFORMATION DERIVED FROM PLAN 4M-1675 BY ANNIS O'SULLIVAN VOLLEBEKK LTD.

CITY FILE N° D07-12-25-0108

PLAN N° 19383



SOIL VOLUME PROJECTIONS (NTS)*	SINGLE		CLAY SOILS	TREE SOIL VOLUMES			
	SMALL	MULTIPLE		TREE TYPE/SIZE	SINGLE TREE SOIL VOLUME	MULTIPLE TREE SOIL VOLUME (m ³ /TREE)	SOIL VOLUME FOR MARINE CLAY AREAS (SINGLE TREE)
MEDIUM/CONIFER				ORNAMENTAL	15	9	15
				COLUMNAR	15	9	15
				SMALL	20	12	25
				MEDIUM	25	15	30
				LARGE	30	18	30
				CONIFER	25	15	30

*SOIL VOLUME CALCULATION BASED ON 1.5m DEPTH

CANOPY PROJECTIONS (NTS)	PROPOSED TREE CANOPY PROJECTIONS			
	TREE TYPE/SIZE	CROWN AREA PER TREE STANDARD RANGE (m ²)	CROWN AREA PER TREE USED FOR CALC. (m ²)	SITE CANOPY COVER
LARGE		135-250*	192	CANOPY (W. OVERLAP): 3,370m ²
MEDIUM		35-135*	85	
SMALL		5-35*	20	
CONIFER		45-96*	70	

PROPOSED STREET TREE CANOPY	
PROPOSED STREET TREE CANOPY, m ² CALCULATION BASED ON PROPOSED SPECIES ESTIMATED CROWN AREA AT MATURITY	CANOPY (W. OVERLAP): 506m ²
*RANGE OF CROWN AREAS IS IN ACCORDANCE WITH PROPOSED TREE SPECIES	SITE: 14,672m ²
**CROWN AREAS ARE ACCORDING TO THE AVERAGE MATURE CANOPY SIZE OF THE RESPECTIVE SPECIES CANOPY SIZES HAS BEEN OBTAINED IN REFERENCE TO VARIOUS ARBORICULTURAL AND BOTANICAL SOURCES, SUCH AS: ONTARIO MINISTRY OF NATURAL RESOURCES & FORESTRY (OMNR); US FOREST SERVICE; ARBOR, J.L. TREES IN CANADA; UNIVERSITY OF GUELPH ARBORETUM, VARIOUS PUBLICATIONS	TOTAL PERCENT COVER: 26.42%

- GENERAL NOTES:**
- ALL PLANT MATERIAL SHALL BE NURSERY GROWN STOCK UNLESS OTHERWISE NOTED.
 - TREES TO HAVE A MINIMUM 1800 CLEAR STEM ABOVE GRADE.
 - CONTRACTOR TO MAKE GOOD ALL EXISTING AREAS DAMAGED BY HIS WORK TO THE SATISFACTION OF THE CONTRACTOR.
 - ALL PLANT MATERIAL SHALL BE WARRANTED FOR TWO YEARS FROM THE DATE OF SUBSTANTIAL COMPLETION.
 - CONTRACTOR TO VERIFY LOCATION OF ALL SERVICES PRIOR TO ANY EXCAVATION.
 - ANY PROPOSED SUBSTITUTIONS OF PLANT SPECIES SHALL BE MADE WITH PLANTS OF EQUIVALENT OVERALL FORM, HEIGHT, BRANCHING HABIT, FLOWER, LEAF, COLOR, FRUIT AND CULTURE AND ONLY AFTER APPROVAL OF THE LANDSCAPE ARCHITECT.
- TREE PLANTING IN MARINE CLAY SOILS**
- THE LANDSCAPE CONSIDERATIONS CONTAINED WITHIN SEC. 6.8 OF PATERSON GROUP'S GEOTECHNICAL INVESTIGATION, DATED APRIL 7, 2025.
- THIS LANDSCAPE PLAN CONFORMS WITH THE TREE-TO-FOUNDATION SETBACK, SOIL VOLUME, AND SURFACE-GRADING REQUIREMENTS OUTLINED IN THE CITY OF OTTAWA'S GUIDELINES FOR TREE PLANTING IN SENSITIVE MARINE CLAY SOILS (2017), BASED ON THE FINDINGS OUTLINED IN THE PROJECT GEOTECHNICAL REPORT BY PATERSON GROUP (REPORT PG3062-2 DATED APRIL 7, 2025).
 - ADDITIONAL REQUIREMENTS OUTLINED IN THE CITY OF OTTAWA'S GUIDELINES FOR TREE PLANTING IN SENSITIVE MARINE CLAY SOILS (2017), INCLUDING USF DEPTH, FOUNDATION WALL REINFORCEMENT, AND SUBDIVISION GRADING, SHOULD BE CONFIRMED BY THE PROJECT ENGINEER(S).

Contractor shall check all dimensions on the work and report any discrepancy to the Landscape Architect before proceeding. All drawings and specifications are the property of the Landscape Architect and must be returned at the completion of the work. This drawing is not to be used for construction until signed by the Landscape Architect.

- LEGEND**
- PROPERTY LINE
 - GEOTECHNICAL FOUNDATION SETBACK (4.5m)
- FENCING**
- PRIVACY FENCE

- PLANTING**
- MEDIUM DECIDUOUS STREET TREE
 - MEDIUM DECIDUOUS TREE
 - SMALL DECIDUOUS TREE
 - CONIFEROUS TREE
 - TREE FORM SHRUB (SHALLOW ROOT SYSTEM)
 - DECIDUOUS/CONIFEROUS SHRUB
 - GRASSES/PERENNIALS
 - SODDING

- PAVING**
- LIGHT DUTY ASPHALT WALKWAYS
 - LIGHT DUTY CONCRETE PAVING
 - PRECAST UNIT PAVING
 - RIVERSTONE
 - PRECAST EDGER

- DETAIL KEY**
- DETAIL NO.
 - SHEET NO.

- PLANTING KEY**
- SHRUB/PERENNIAL SPECIES
 - QUANTITY

No.	Description	Date
5	Issued for Second Submission	Feb 05/26
4	Issued for First Submission	Jul 02/25
3	Issued for Coordination	Jun 26/25
2	Issued for Client Review	Jun 19/25
1	Issued for Client Review	Jun 13/25

Revision	
City Approval Stamp	OWNERSHIP RICH CRAFT 2285 St. Laurent Blvd, Suite 201 Ottawa, ON K1G 4K1
	ARCHITECT M. DAVID BLAKELY ARCHITECT INC. 2300 Prince of Wales Dr., Suite 101 Ottawa, Ontario K2E 6Z9
	CIVIL STANTEC CONSULTING LTD. 400-1331 Clyde Avenue, Ottawa ON
	LANDSCAPE ARCHITECT NAK DESIGN STRATEGIES 1285 Wellington St., Ottawa, ON K1Y 3A8
	GEOTECHNICAL PATERSON GROUP 9 Auriga Dr., Ottawa, ON K2E 7F9

PROPERTY INFORMATION
PLAN 001507

NAK
design strategies

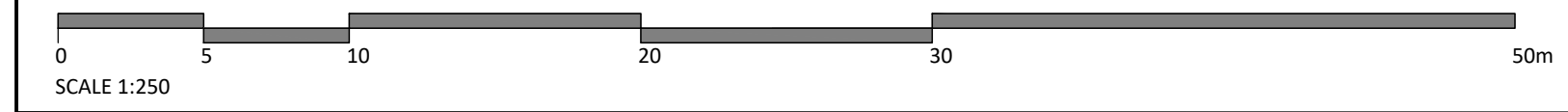
1285 WELLINGTON STREET, OTTAWA, ON K1Y 3A8 CANADA
T 613.237.2345 NAKDESIGNSTRATEGIES.COM

Project

Kanata West Block 1
815 Roger Griffiths Ave., Ottawa, ON

Title	
TREE CANOPY CALCULATIONS AND SOIL VOLUMES	
Date	2025-05-26
Scale	1:250
Drawn	SW
Checked	MK
Job No.	25-113
Sheet	L 1.1

NOTES:
SITE PLAN PREPARED BY M. DAVID BLAKELY ARCHITECT INC.
SERVICING AND GRADING PLANS AND STORMWATER MANAGEMENT REPORT PREPARED BY STANTEC CONSULTING LTD.
THE LANDSCAPE PLAN WAS PREPARED IN CONJUNCTION WITH THE GEOTECHNICAL REPORT PREPARED BY PATERSON GROUP:
• PG3062-2 DATED APRIL 7, 2025
ALL EXISTING SURVEY INFORMATION DERIVED FROM PLAN 4M-1675 BY ANNIS O'SULLIVAN VOLLEBEKK LTD.

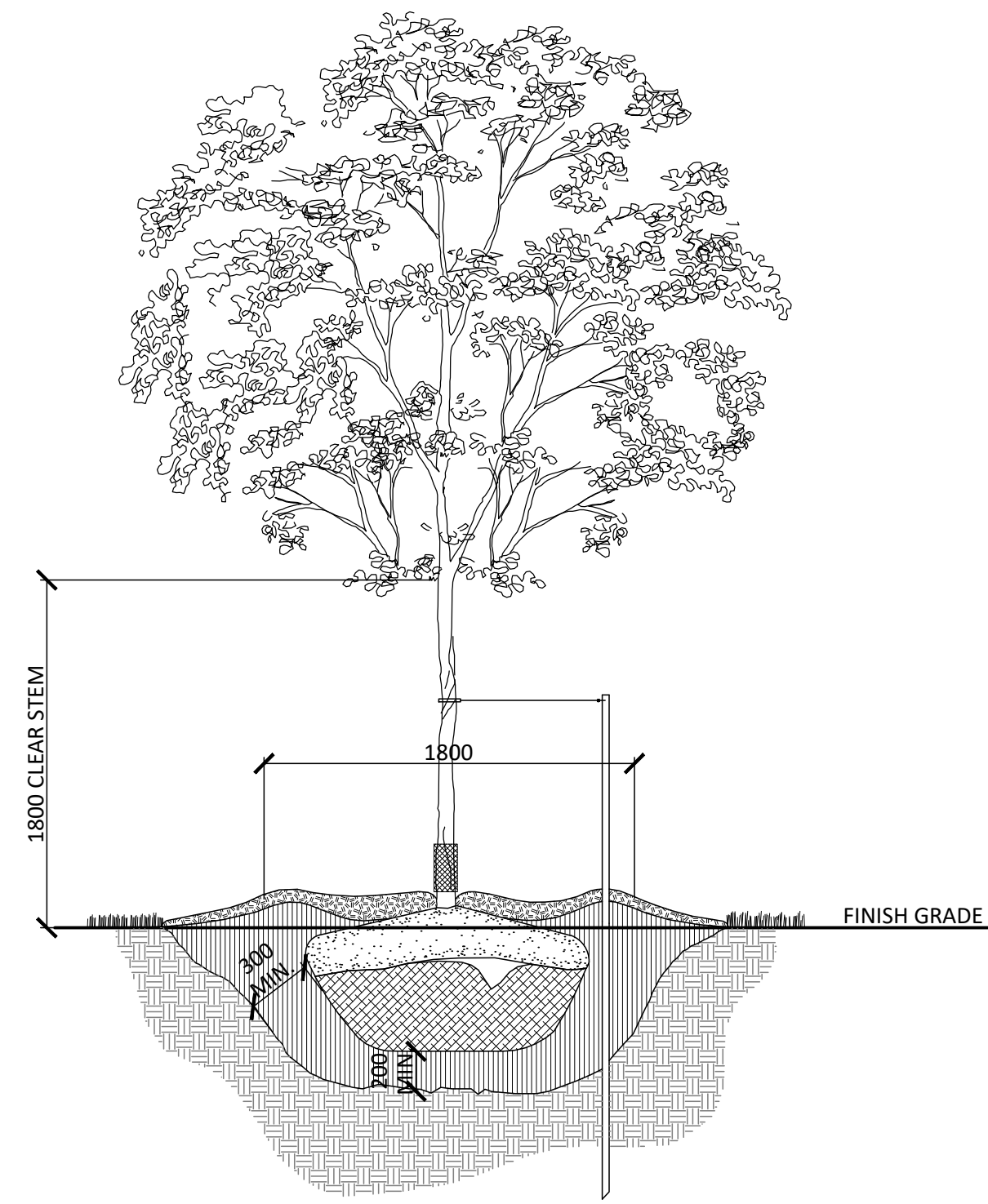


SCALE 1:250

CITY FILE N° D07-12-25-0108

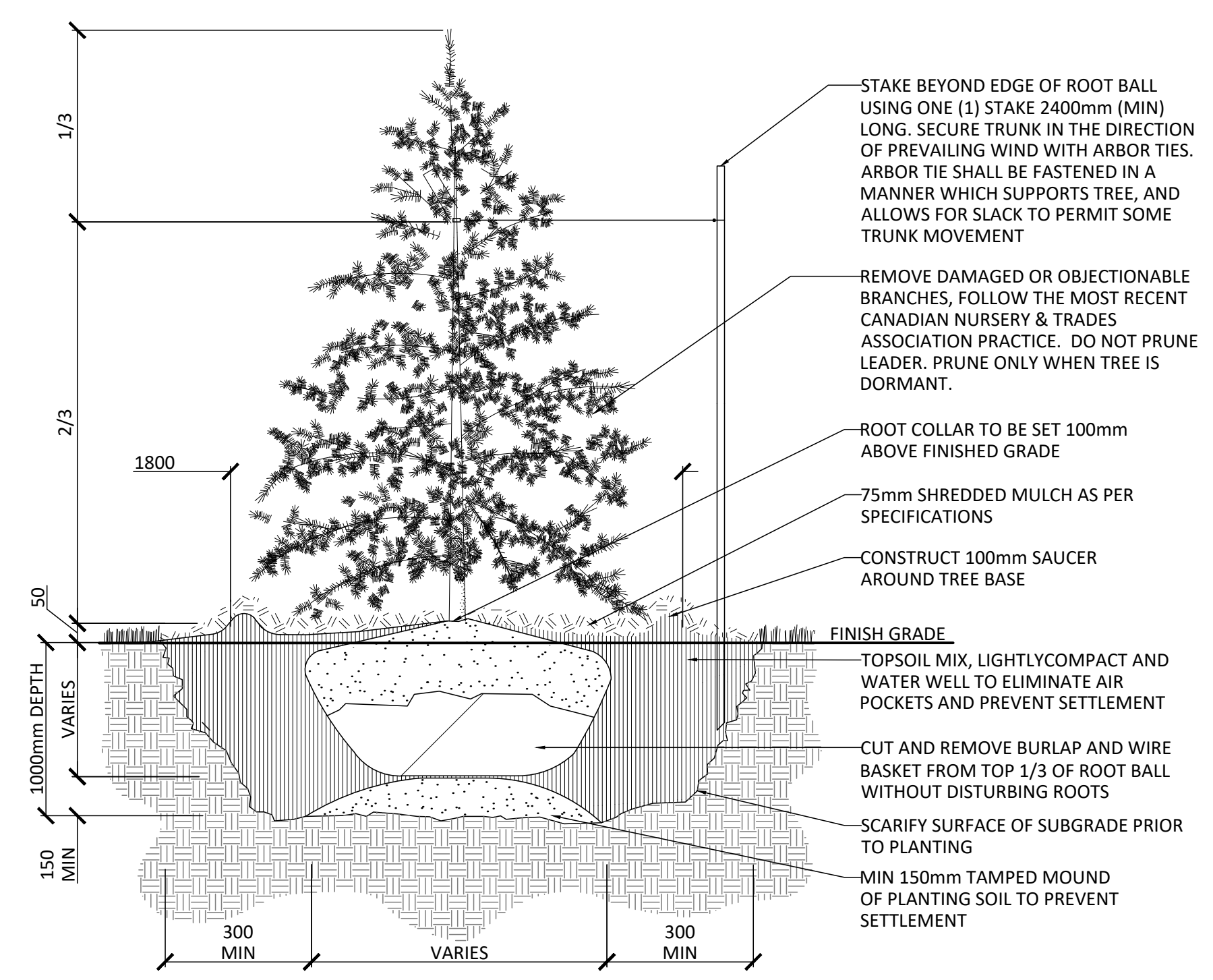
PLAN N° 19383

Contractor shall check all dimensions on the work and report any discrepancy to the Landscape Architect before proceeding. All drawings and specifications are the property of the Landscape Architect and must be returned at the completion of the work. This drawing is not to be used for construction until signed by the Landscape Architect.



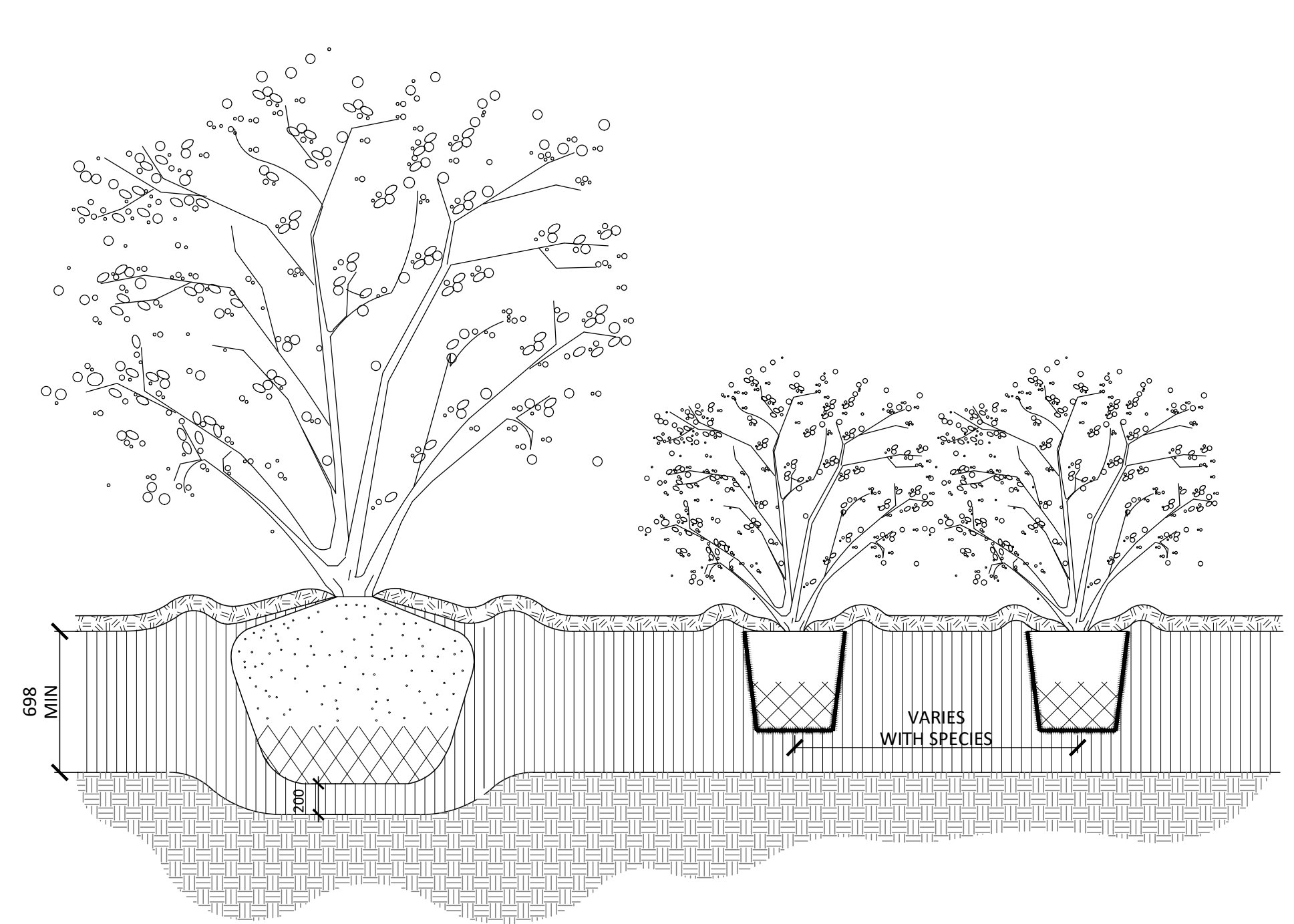
- NOTES:**
1. REMOVE STAKE AFTER ONE YEAR OR UNTIL TAKEOVER, UNLESS OTHERWISE DIRECTED BY THE LANDSCAPE ARCHITECT.
 2. TOPSOIL MIXTURE AND SHREDDED MULCH AS PER SPECIFICATION
 3. REMOVE TREE WRAP AFTER PLANTING
 4. CALLIPER TO BE MEASURED AT THE BASE OF TREE AT ROOT BALL.

1 DECIDUOUS TREE PLANTING (ONE STAKE W/ARBOR TIES)
1:30



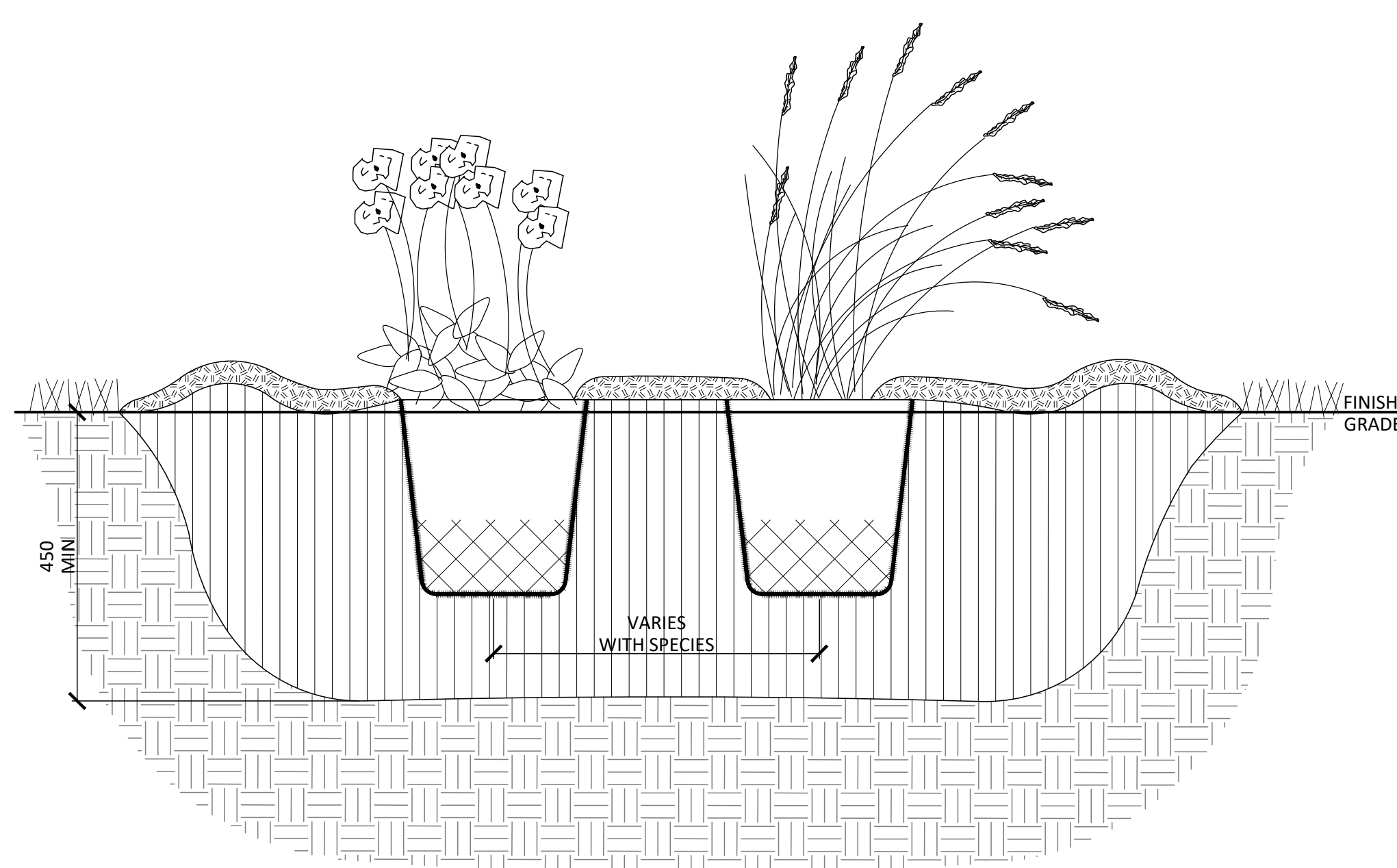
- NOTES:**
1. REMOVE STAKE AFTER ONE YEAR OR UNTIL TAKEOVER UNLESS OTHERWISE DIRECTED BY THE LANDSCAPE ARCHITECT.
 2. TOPSOIL MIXTURE AND SHREDDED MULCH AS PER SPECIFICATION

2 CONIFEROUS TREE PLANTING (ONE STAKE W/ARBOR TIES)
1:30



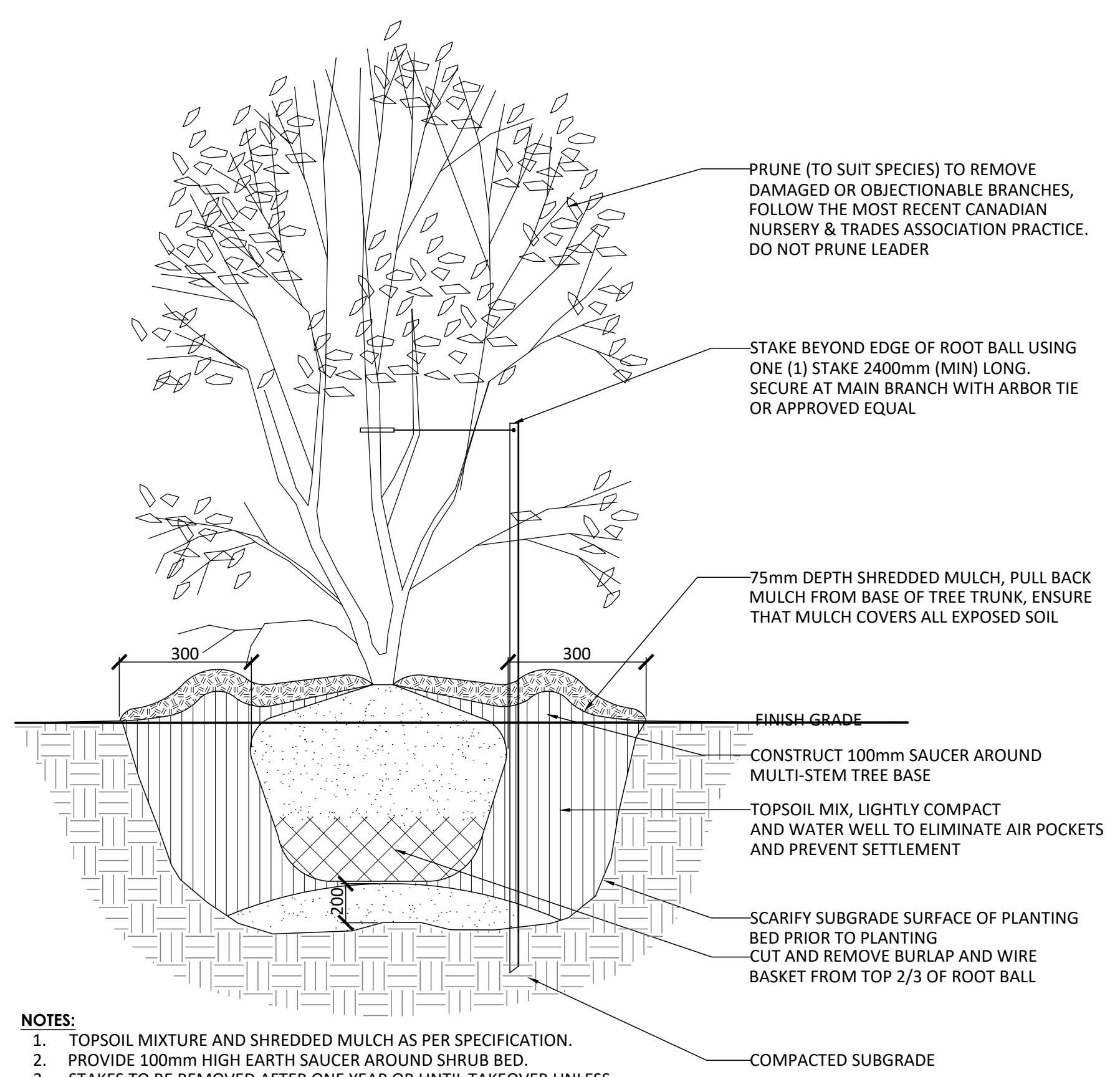
- NOTES:**
1. TOPSOIL MIXTURE AND SHREDDED MULCH AS PER SPECIFICATION.
 2. SHRUBS SPECIFIED BARE ROOT (B.R.) TO BE PLANTED SO THAT ROOTS ARE FULLY EXTENDED IN PLANTING HOLE WITH SOIL MIX BACKFILLED CAREFULLY TO PREVENT ROOT DAMAGE.
 3. PROVIDE 100mm HIGH EARTH SAUCER AROUND SHRUB BED.
 4. STAKES TO BE REMOVED AFTER ONE YEAR OR UNTIL TAKEOVER UNLESS OTHERWISE DIRECTED BY LANDSCAPE ARCHITECT.

3 SHRUB BED PLANTING
1:25



- NOTES:**
1. TOPSOIL MIXTURE AND SHREDDED MULCH AS PER SPECIFICATION.
 2. PROVIDE 100mm HIGH EARTH SAUCER AROUND PERENNIAL/GRASS BED.

4 PERENNIAL AND ORNAMENTAL GRASS PLANTING
1:25



- NOTES:**
1. TOPSOIL MIXTURE AND SHREDDED MULCH AS PER SPECIFICATION.
 2. PROVIDE 100mm HIGH EARTH SAUCER AROUND SHRUB BED.
 3. STAKES TO BE REMOVED AFTER ONE YEAR OR UNTIL TAKEOVER UNLESS OTHERWISE DIRECTED BY LANDSCAPE ARCHITECT.

5 TREE FORM SHRUB PLANTING
1:25

No.	Description	Date
5	Issued for Second Submission	Feb 05/26
4	Issued for First Submission	Jul 02/25
3	Issued for Coordination	Jun 26/25
2	Issued for Client Review	Jun 19/25
1	Issued for Client Review	Jun 13/25

Revision	
City Approval Stamp	OWNERSHIP RICH CRAFT 2285 St. Laurent Blvd, Suite 201 Ottawa, ON K1G 4K1
	ARCHITECT M. DAVID BLAKEY ARCHITECT INC. 2300 Prince of Wales Dr. - Suite 101 Ottawa, Ontario K2E 6Z9
	CIVIL STANTEC CONSULTING LTD. 400-1331 Clyde Avenue, Ottawa ON
	LANDSCAPE ARCHITECT NAK DESIGN STRATEGIES 1285 Wellington St., Ottawa, ON K1Y 3A8
	GEOTECHNICAL PATRICKSON GROUP 9 Auriga Dr., Ottawa, ON K2E 7F9

PROPERTY INFORMATION
PLAN 001-1079



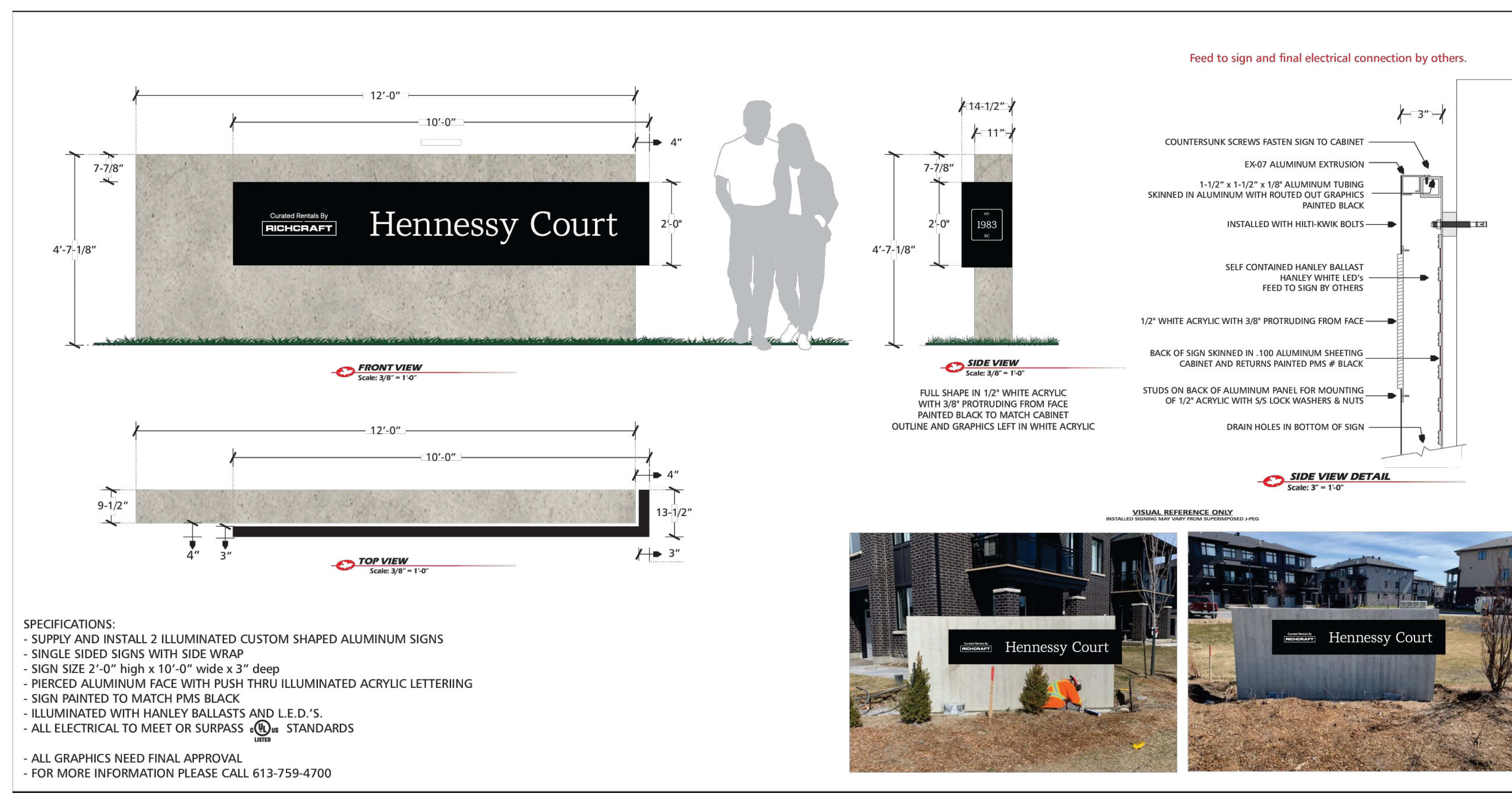
NAK
design strategies

1285 WELLINGTON STREET, OTTAWA, ON K1Y 3A8 CANADA
T 613.237.2345 NAKDESIGNSTRATEGIES.COM

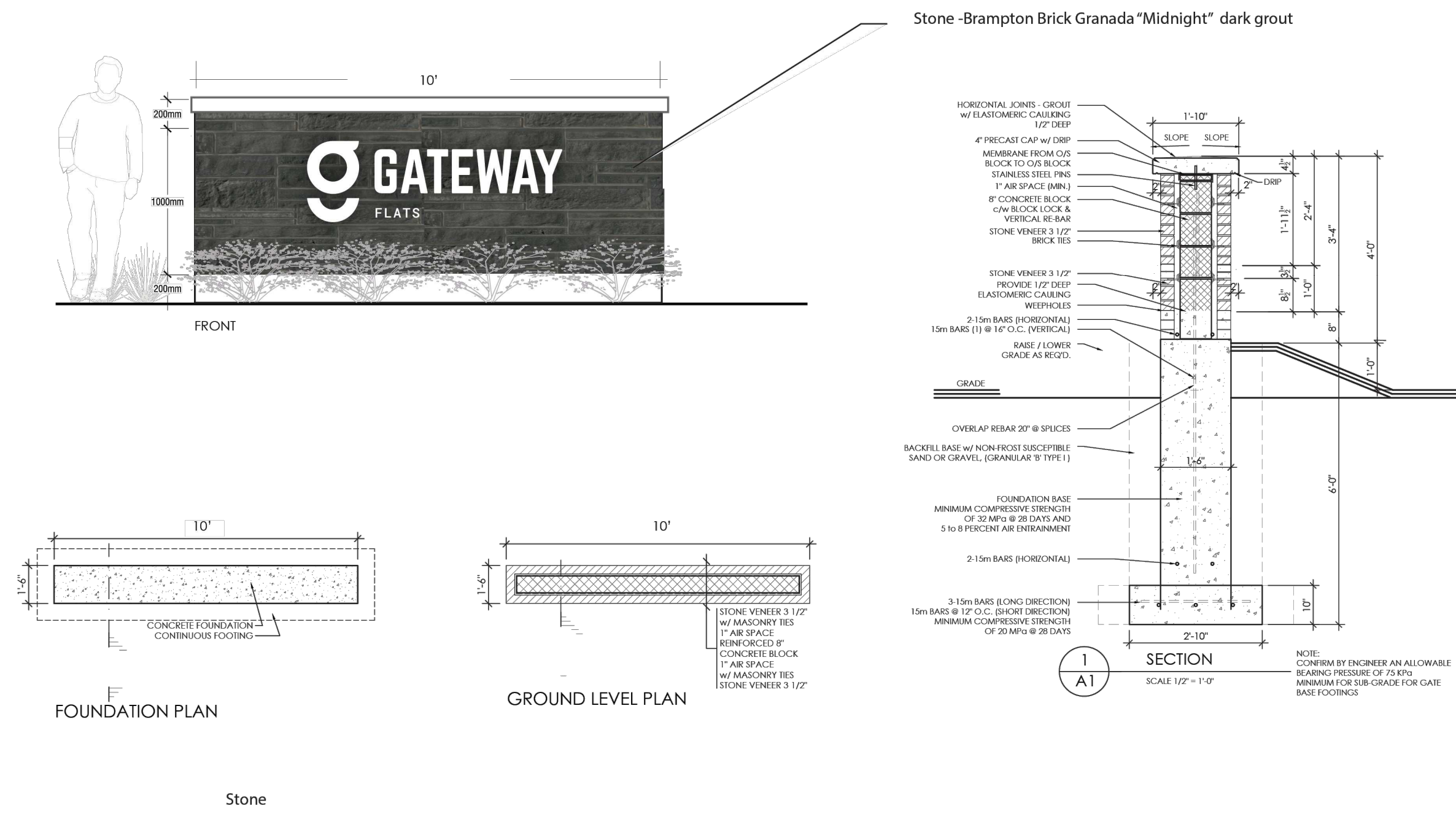
Kanata West Block 1
815 Roger Griffiths Ave., Ottawa, ON

Title	
DETAILS	
Date	2025-05-26
Scale	AS SHOWN
Drawn	SW
Checked	MK
Job No.	25-113
Sheet	L 2.1

Contractor shall check all dimensions on the work and report any discrepancy to the Landscape Architect before proceeding. All drawings and specifications are the property of the Landscape Architect and must be returned at the completion of the work. This drawing is not to be used for construction until signed by the Landscape Architect.



1 ENTRANCE SIGNAGE - RENTAL SITE (SP1-a)
N.T.S.



2 ENTRANCE SIGNAGE - CONDO SITE (SP1-b)
N.T.S.

No.	Description	Date
5	Issued for Second Submission	Feb 05/26
4	Issued for First Submission	Jul 02/25
3	Issued for Coordination	Jun 26/25
2	Issued for Client Review	Jun 19/25
1	Issued for Client Review	Jun 13/25

Revision	
City Approval Stamp	OWNERSHIP RICHCRAFT 2285 St. Laurent Blvd, Suite 201 Ottawa, ON K1G 4K1
	ARCHITECT M. DAVID BLAKEY ARCHITECT INC. 2300 Prince of Wales Dr., Suite 101 Ottawa, Ontario K2E 6Z9
	CIVIL STANTEC CONSULTING LTD. 400-1331 Clyde Avenue, Ottawa ON
	LANDSCAPE ARCHITECT NAK DESIGN STRATEGIES 1285 Wellington St., Ottawa, ON K1Y 3A8
	GEOTECHNICAL PATRICKSON GROUP 9 Auriga Dr., Ottawa, ON K2E 7Y9

PROPERTY INFORMATION
PLAN 001-1079



NAK design strategies

1285 WELLINGTON STREET, OTTAWA, ON K1Y 3A8 CANADA
T 613.237.2345 NAKDESIGNSTRATEGIES.COM

Kanata West Block 1
815 Roger Griffiths Ave., Ottawa, ON

Title	
DETAILS	
Date	2025-05-26
Scale	AS SHOWN
Drawn	MB
Checked	MK
Job No.	25-113
Sheet	L 2.2