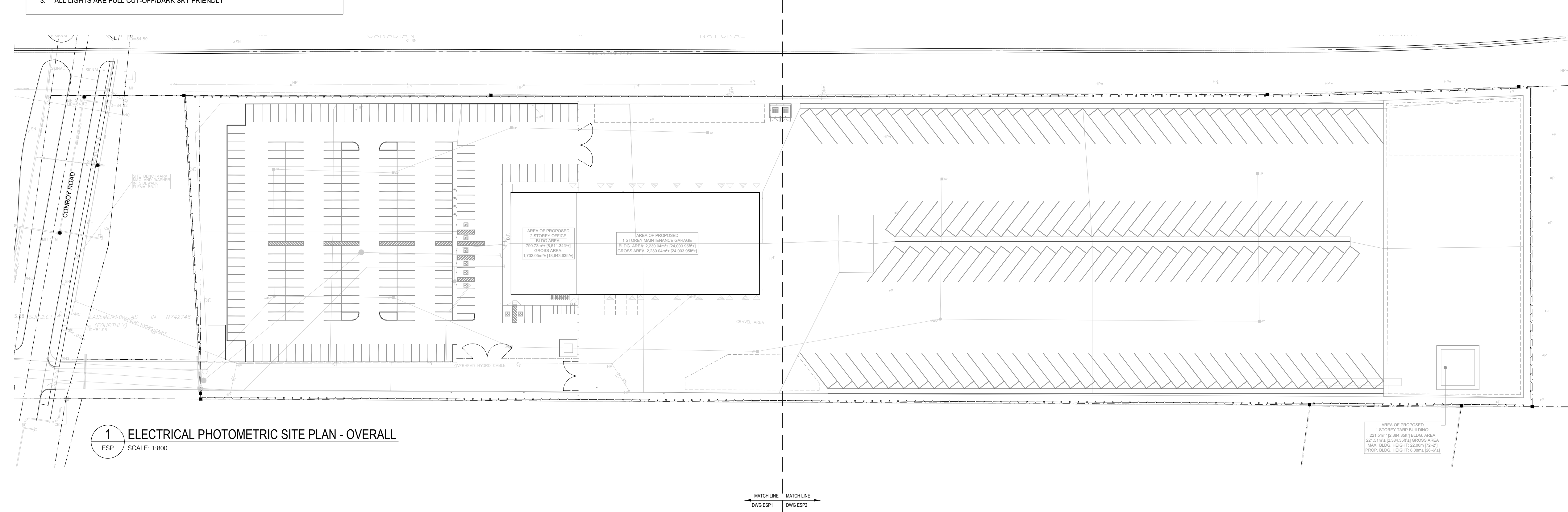


THESE DRAWINGS ARE NOT TO BE SCALED FOR SITE DIMENSIONS. THE CONTRACTOR MUST CHECK AND VERIFY ALL DIMENSIONS AND SITE CONDITIONS AT THE PROJECT SITE AND MUST REPORT ANY DISCREPANCIES TO THE CONSULTANTS BEFORE PROCEEDING WITH THE WORK.

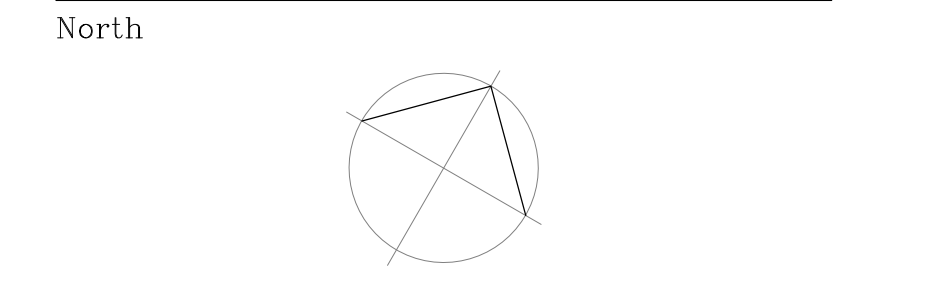
COORDINATE ALL OF THE WORK WITH OTHER TRADES & THE LAYOUTS SHOWN ON THE OTHER CONSULTANTS AND THE ARCHITECTURAL DRAWINGS (WHERE APPLICABLE). REFER TO THE APPROPRIATE CONSULTANT DRAWINGS BEFORE PROCEEDING WITH THE WORK FOR ANY COORDINATION REQUIREMENTS.

THIS CONTRACTOR MUST CONFORM TO ALL APPLICABLE CODES AND STANDARD REQUIREMENTS OF THE AUTHORITIES HAVING JURISDICTION. THE CONTRACTOR SHALL WORK FROM DRAWINGS MARKED 'ISSUED FOR CONSTRUCTION' AND SHALL ENSURE LATEST ISSUED INSTRUCTIONS ARE FOLLOWED. THIS CONTRACTOR SHALL ASSUME FULL RESPONSIBILITY AND BEAR COSTS FOR ANY CORRECTIONS OR DAMAGES RESULTING FROM THEIR WORK.

- GENERAL NOTES : PHOTOMETRIC DRAWING**
- ALL CALCULATIONS POINTS ARE TAKEN AT GROUND LEVEL AND ARE IN FOOTCANDLES
  - TOTAL MOUNTING HEIGHT FOR ALL PARKING LOT/SITE LIGHTS IS 33' (10m)
  - ALL LIGHTS ARE FULL CUT-OFF/DARK SKY FRIENDLY



**1 ELECTRICAL PHOTOMETRIC SITE PLAN - OVERALL**  
 ESP SCALE: 1:800

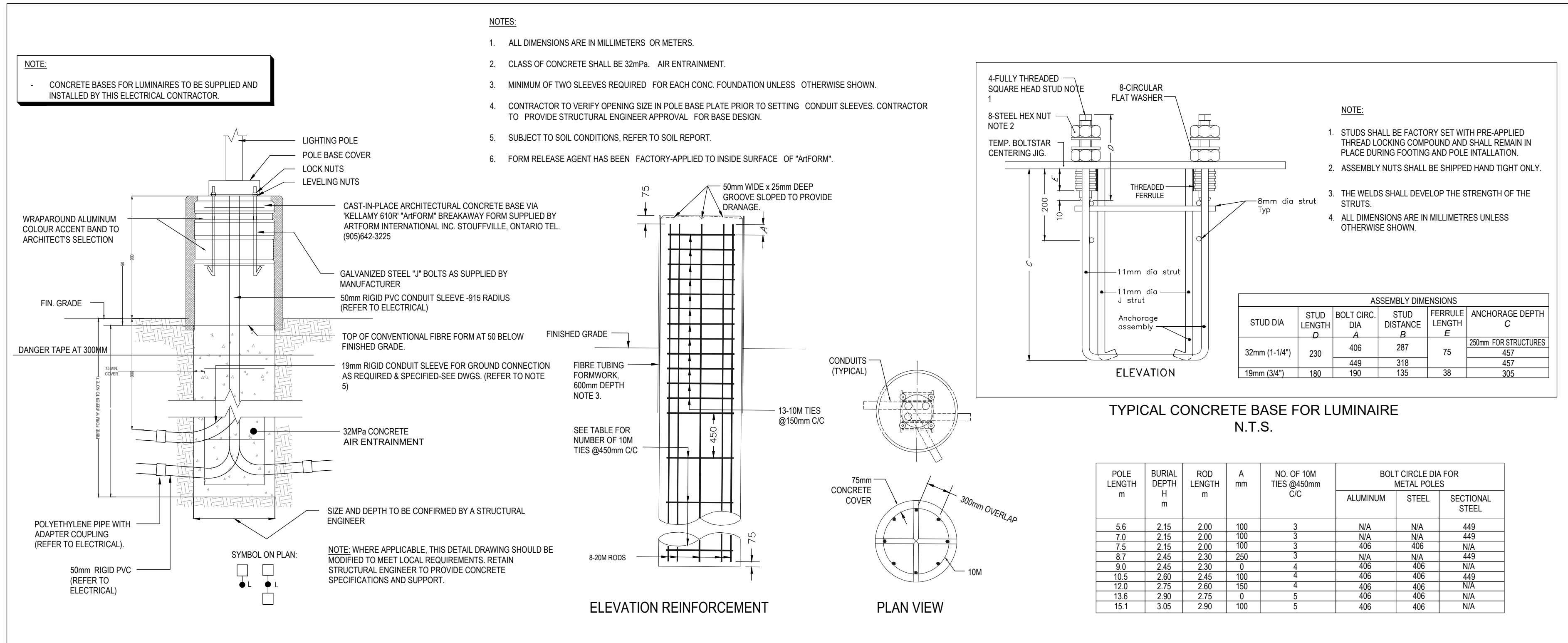


Revisions

No.	By	Description	Date
02	BK	ISSUED FOR COORDINATION	2025-10-29
01	BK	ISSUED FOR COORDINATION	2025-08-20

Project  
**WO MW REALTY LIMITED OFFICE GROUP SITE PLAN APPLICATION NEW MILLER WASTE FACILITY**  
 3145 CONROY ROAD, OTTAWA, ON  
 Drawing  
**ELECTRICAL PHOTOMETRIC SITE PLAN OVERALL**

Scale AS NOTED  
 Drawn BD  
 Checked BK  
 Plan # 15862  
 File # D07-12-25-0107  
 Project No. 25-000-087  
 Drawing No.  
 Date MAY 2025



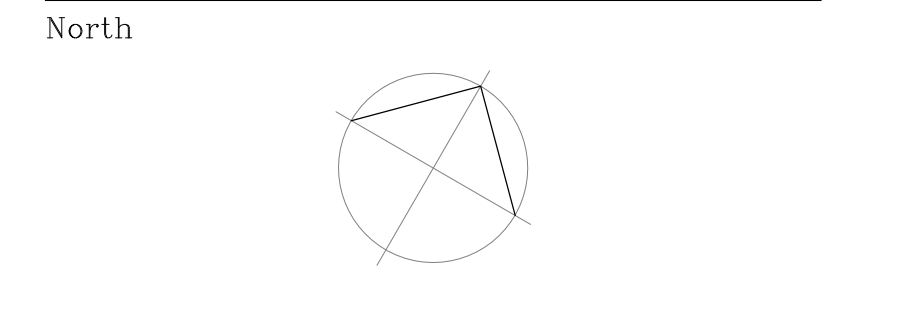
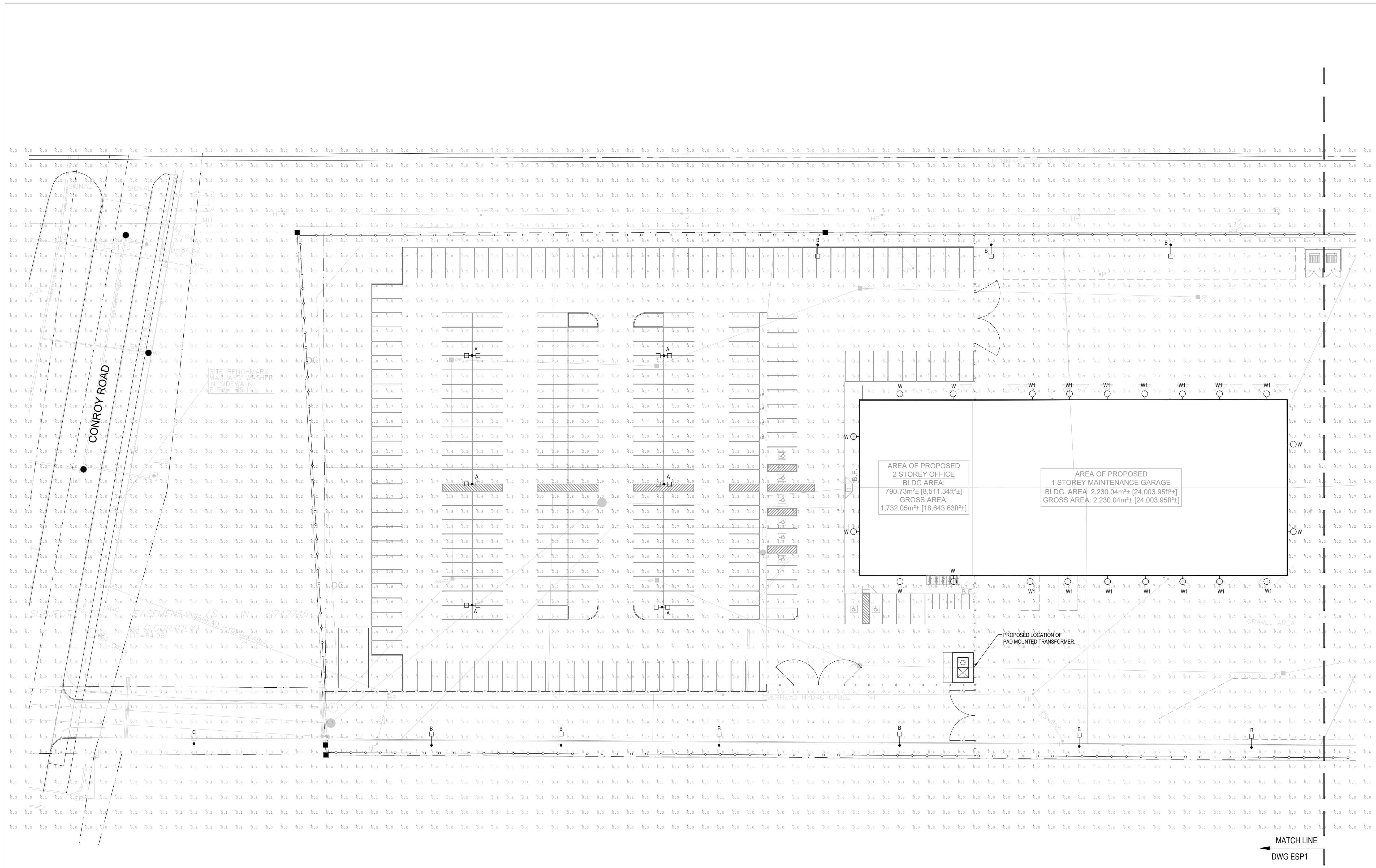
**LIGHT FIXTURE SCHEDULE**

TYPE	DESCRIPTION
A	LUMINAIRE/POLE ASSEMBLY CONSISTING OF A DOUBLE (2) LED LUMINAIRES WITH TYPE IV DISTRIBUTION PATTERN, 347V OUTDOOR USE DRIVER ON A 30" SQUARE STEEL POLE WITH POLE BASE COVER ON 3" CONCRETE BASE. COLOUR OF FINISH OF POLE/HEAD ARCHITECT OWNER SELECTION. LAMPS SHALL BE SUPPLIED WITH THE FIXTURE. FIXTURE TO HAVE FLAT LENS, BE FULL CUT OFF AND DARK-SKY FRIENDLY. SOLERA CORP. HAZE-1-160W-HLV-3500K-TY-IV-CC
A2	LUMINAIRE/POLE ASSEMBLY CONSISTING OF A DOUBLE (2) LED LUMINAIRES WITH A TYPE V SQUARE DISTRIBUTION PATTERN, 5' MAST ARM, 347V OUTDOOR USE DRIVER ON A 30" SQUARE STEEL POLE WITH POLE BASE COVER ON 3" CONCRETE BASE. COLOUR OF FINISH OF POLE/HEAD ARCHITECT OWNER SELECTION. LAMPS SHALL BE SUPPLIED WITH THE FIXTURE. FIXTURE TO HAVE FLAT LENS, BE FULL CUT OFF AND DARK-SKY FRIENDLY. SOLERA CORP. HAZE-2-300W-HLV-3500K-TY-VS-CC-SMA
A3	LUMINAIRE/POLE ASSEMBLY CONSISTING OF A TRIPLE (3) LED LUMINAIRES MOUNTED AT 90" WITH A TYPE V SQUARE DISTRIBUTION PATTERN, 5' MAST ARM, 347V OUTDOOR USE DRIVER ON A 30" SQUARE STEEL POLE WITH POLE BASE COVER ON 3" CONCRETE BASE. COLOUR OF FINISH OF POLE/HEAD ARCHITECT OWNER SELECTION. LAMPS SHALL BE SUPPLIED WITH THE FIXTURE. FIXTURE TO HAVE FLAT LENS, BE FULL CUT OFF AND DARK SKY FRIENDLY. SOLERA CORP. HAZE-2-300W-HLV-3500K-TY-VS-CC-SMA
B	LUMINAIRE/POLE ASSEMBLY CONSISTING OF A SINGLE (1) LED LUMINAIRE WITH A TYPE IV DISTRIBUTION PATTERN, 5' MAST ARM, 347V OUTDOOR USE DRIVER ON A 30" SQUARE STEEL POLE WITH POLE BASE COVER ON 3" CONCRETE BASE. COLOUR OF FINISH OF POLE/HEAD TO ARCHITECT OWNER SELECTION. LAMPS SHALL BE SUPPLIED WITH THE FIXTURE. FIXTURE TO HAVE FLAT LENS, BE FULL CUT OFF AND DARK-SKY FRIENDLY. FIXTURE TO BE C/W HOUSE SIDE SHIELD. SOLERA CORP. HAZE-1-200W-HLV-3500K-TY-IV-HCO-CC-SMA
C	LUMINAIRE/POLE ASSEMBLY CONSISTING OF A SINGLE (1) LED LUMINAIRE WITH A TYPE II DISTRIBUTION PATTERN, 5' MAST ARM, 347V OUTDOOR USE DRIVER ON A 30" SQUARE STEEL POLE WITH POLE BASE COVER ON 3" CONCRETE BASE. COLOUR OF FINISH OF POLE/HEAD TO ARCHITECT OWNER SELECTION. LAMPS SHALL BE SUPPLIED WITH THE FIXTURE. FIXTURE TO HAVE FLAT LENS, BE FULL CUT OFF AND DARK-SKY FRIENDLY. FIXTURE TO BE C/W HOUSE SIDE SHIELD. SOLERA CORP. HAZE-1-160W-HLV-3500K-TY-II-HCO-CC
W	WALL MOUNTED LUMINAIRE CONSISTING OF A SINGLE (1) LED LUMINAIRE WITH A TYPE IV DISTRIBUTION PATTERN, 347V OUTDOOR USE DRIVER AND WALL MOUNT ADAPTER. COLOUR OF FINISH OF HEAD TO ARCHITECT OWNER SELECTION. LAMPS SHALL BE SUPPLIED WITH THE FIXTURE. FIXTURE TO HAVE FLAT LENS BE FULL CUT OFF AND DARK-SKY FRIENDLY. FIXTURE TO BE MOUNTED AT 20' A.F.F. SOLERA CORP. HAZE-1-160W-HLV-3500K-TY-IV-CC-WM
W1	WALL MOUNTED LUMINAIRE CONSISTING OF A SINGLE (1) LED LUMINAIRE WITH A TYPE IV DISTRIBUTION PATTERN, 347V OUTDOOR USE DRIVER AND WALL MOUNT ADAPTER. COLOUR OF FINISH OF HEAD TO ARCHITECT OWNER SELECTION. LAMPS SHALL BE SUPPLIED WITH THE FIXTURE. FIXTURE TO HAVE FLAT LENS BE FULL CUT OFF AND DARK-SKY FRIENDLY. FIXTURE TO BE MOUNTED AT 20' A.F.F. SOLERA CORP. HAZE-1-80W-HLV-3500K-TY-IV-CC-WM

THESE DRAWINGS ARE NOT TO BE SCALED FOR SITE DIMENSIONS. THE CONTRACTOR MUST CHECK AND VERIFY ALL DIMENSIONS AND SITE CONDITIONS AT THE PROJECT SITE AND MUST REPORT ANY DISCREPANCIES TO THE CONSULTANTS BEFORE PROCEEDING WITH THE WORK FOR ANY COORDINATION REQUIREMENTS.

COORDINATE ALL OF THE WORK WITH OTHER TRADES & THE LAYOUTS SHOWN ON THE OTHER CONSULTANTS AND THE ARCHITECTURAL DRAWINGS (WHERE APPLICABLE). REFER TO THE APPROPRIATE CONSULTANT DRAWINGS BEFORE PROCEEDING WITH THE WORK FOR ANY COORDINATION REQUIREMENTS.

THIS CONTRACTOR MUST CONFORM TO ALL APPLICABLE CODES AND STANDARD REQUIREMENTS OF THE AUTHORITIES HAVING JURISDICTION. THE CONTRACTOR SHALL WORK FROM DRAWINGS MARKED 'ISSUED FOR CONSTRUCTION' AND SHALL ENSURE LATEST ISSUED INSTRUCTIONS ARE FOLLOWED. THIS CONTRACTOR SHALL ASSUME FULL RESPONSIBILITY AND BEAR COSTS FOR ANY CORRECTIONS OR DAMAGES RESULTING FROM THEIR WORK.



Revisions

No.	By	Description	Date
02	BK	ISSUED FOR COORDINATION	2025-10-29
01	BK	ISSUED FOR COORDINATION	2025-08-20

Project

**WO MW REALTY LIMITED  
 OFFICE GROUP  
 SITE PLAN APPLICATION  
 NEW MILLER WASTE FACILITY**

3145 CONROY ROAD, OTTAWA, ON

Drawing

**ELECTRICAL  
 PHOTOMETRIC SITE PLAN -  
 PART 1**

**1** ELECTRICAL PHOTOMETRIC SITE PLAN - PART 1  
 ESP1 SCALE: 1:400

Scale AS NOTED

Stamp

Drawn BD

Checked BK

Plan # 15862  
 File # D07-12-25-0107

Project No. 25-000-087  
 Drawing No.

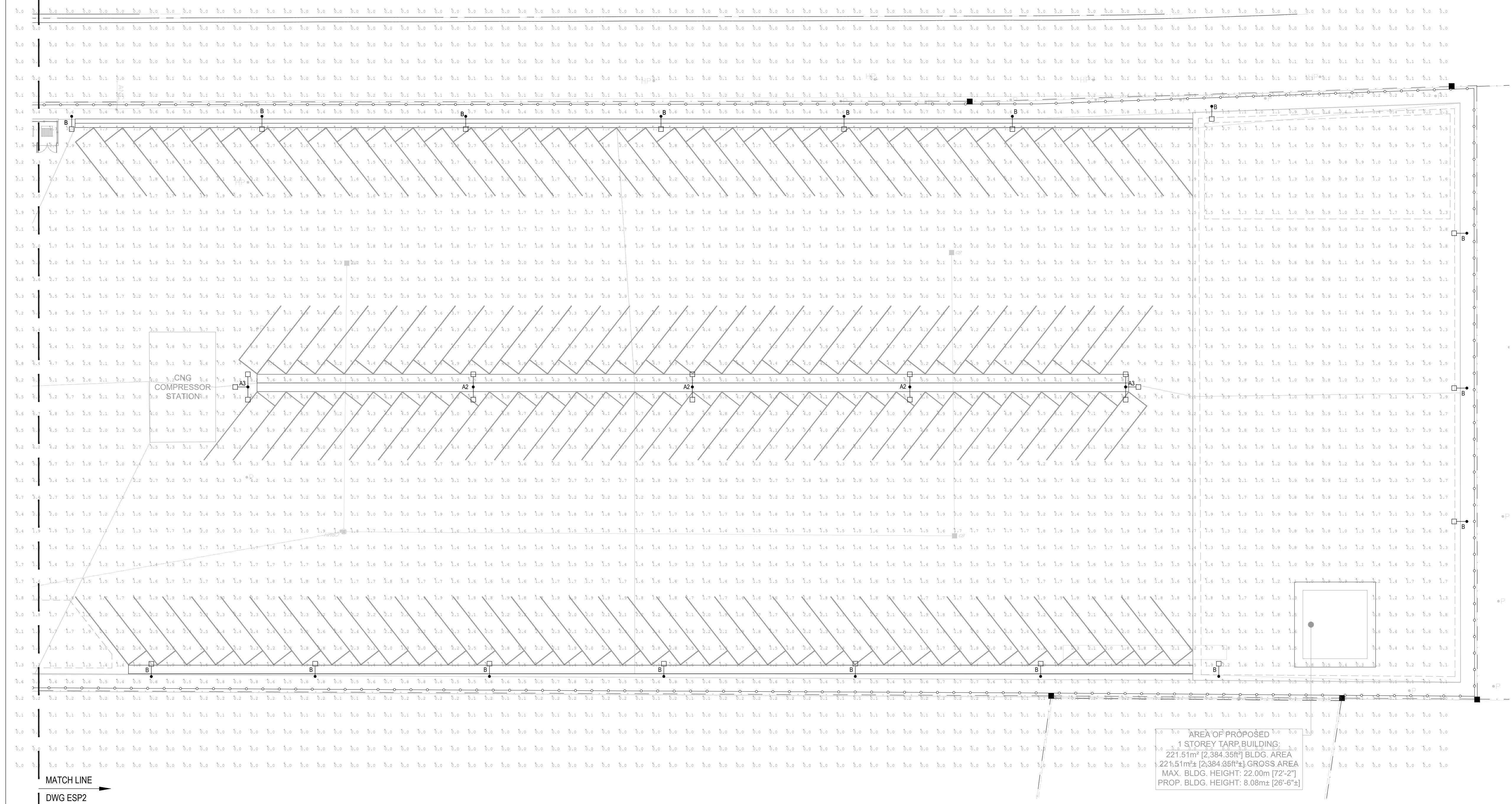
Date MAY 2025

**ESP1**

THESE DRAWINGS ARE NOT TO BE SCALED FOR SITE DIMENSIONS. THE CONTRACTOR MUST CHECK AND VERIFY ALL DIMENSIONS AND SITE CONDITIONS AT THE PROJECT SITE AND MUST REPORT ANY DISCREPANCIES TO THE CONSULTANTS BEFORE PROCEEDING WITH THE WORK.

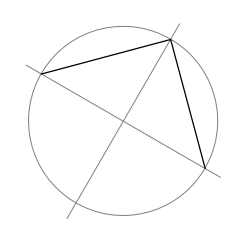
COORDINATE ALL OF THE WORK WITH OTHER TRADES & THE LAYOUTS SHOWN ON THE OTHER CONSULTANTS AND THE ARCHITECTURAL DRAWINGS (WHERE APPLICABLE). REFER TO THE APPROPRIATE CONSULTANT DRAWINGS BEFORE PROCEEDING WITH THE WORK FOR ANY COORDINATION REQUIREMENTS.

THIS CONTRACTOR MUST CONFORM TO ALL APPLICABLE CODES AND STANDARD REQUIREMENTS OF THE AUTHORITIES HAVING JURISDICTION. THE CONTRACTOR SHALL WORK FROM DRAWINGS MARKED 'ISSUED FOR CONSTRUCTION' AND SHALL ENSURE LATEST ISSUED INSTRUCTIONS ARE FOLLOWED. THIS CONTRACTOR SHALL ASSUME FULL RESPONSIBILITY AND BEAR COSTS FOR ANY CORRECTIONS OR DAMAGES RESULTING FROM THEIR WORK.



AREA OF PROPOSED  
 1 STOREY TARP BUILDING:  
 221.51m<sup>2</sup> [2,384,359ft<sup>2</sup>] BLDG. AREA  
 221.51m<sup>2</sup> [2,384,359ft<sup>2</sup>] GROSS AREA  
 MAX. BLDG. HEIGHT: 22.00m [72'-2"]  
 PROP. BLDG. HEIGHT: 8.08m [26'-6"]

North



Revisions

No.	By	Description	Date
02	BK	ISSUED FOR COORDINATION	2025-10-29
01	BK	ISSUED FOR COORDINATION	2025-08-20

Project

**WO MW REALTY LIMITED  
 OFFICE GROUP  
 SITE PLAN APPLICATION  
 NEW MILLER WASTE FACILITY**

3145 CONROY ROAD, OTTAWA, ON

Drawing  
**ELECTRICAL  
 PHOTOMETRIC SITE PLAN -  
 PART 2**

Scale	AS NOTED	Stamp	
Drawn	BD		
Checked	BK		
Plan #	15862		
File #	D07-12-25-0107		
Project No.	25-000-087	Drawing No.	
Date	MAY 2025		

**ESP2**

**1** ELECTRICAL PHOTOMETRIC SITE PLAN - PART 2  
 ESP2 SCALE: 1:400