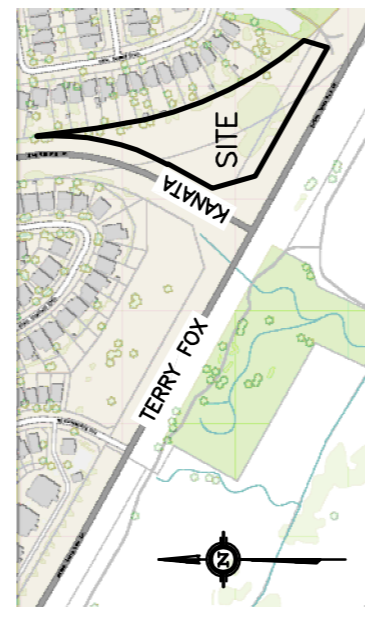


**LEGEND**

- FFL FINISHED FLOOR ELEVATION
- BFL BASEMENT FLOOR ELEVATION
- USF UNDERSIDE OF FOOTING
- PROPERTY LINE
- CB CATCH-BASIN
- MH STORM MANHOLE
- CB/MH CATCH-BASIN/MANHOLE
- MH SANITARY MANHOLE
- DMAC DMA CHAMBER
- FH FIRE HYDRANT
- FDC FIRE DEPARTMENT CONNECTION
- VB VALVE & VALVE BOX
- SAN SANITARY SEWER
- ST STORM SEWER
- WS/WM WATER SERVICE/WATERMAIN
- SPL SPRINGLINE
- INV INVERT
- US UNDERSIDE

**KEY PLAN**



No.	DATE	REVISION
4	JAN 26-26	RE-ISSUED FOR APPROVAL
3	OCT 28-25	RE-ISSUED FOR APPROVAL
2	JUL 11-25	ISSUED FOR APPROVAL
1	FEB 27-25	PRELIMINARY

**D. B. GRAY ENGINEERING INC.**  
 Professional Engineers - Ontario  
 700 Long Point Circle  
 Ottawa, Ontario K1L 1A1  
 Tel: 613-425-8044  
 Fax: 613-425-8044  
 Email: d.gray@dbgrayengineering.com

**PROPOSED 6-STORY APARTMENT BUILDINGS**  
 475 TERRY FOX DRIVE  
 OTTAWA, ONTARIO

**SITE SERVICING PLAN**  
 (SE CORNER)

Engineer's Seal: D.B. GRAY, P. ENG. (1997), No. 28-238, PROVINCE OF ONTARIO

Drawn: D.B.G. 1:200  
 H. Scale: 1:200  
 V. Scale: 1:200  
 Date: FEB 27-25  
 Job No.: 24103

Drawing No.: C-4 of 19  
 NOT VALID UNLESS SIGNED & DATED

