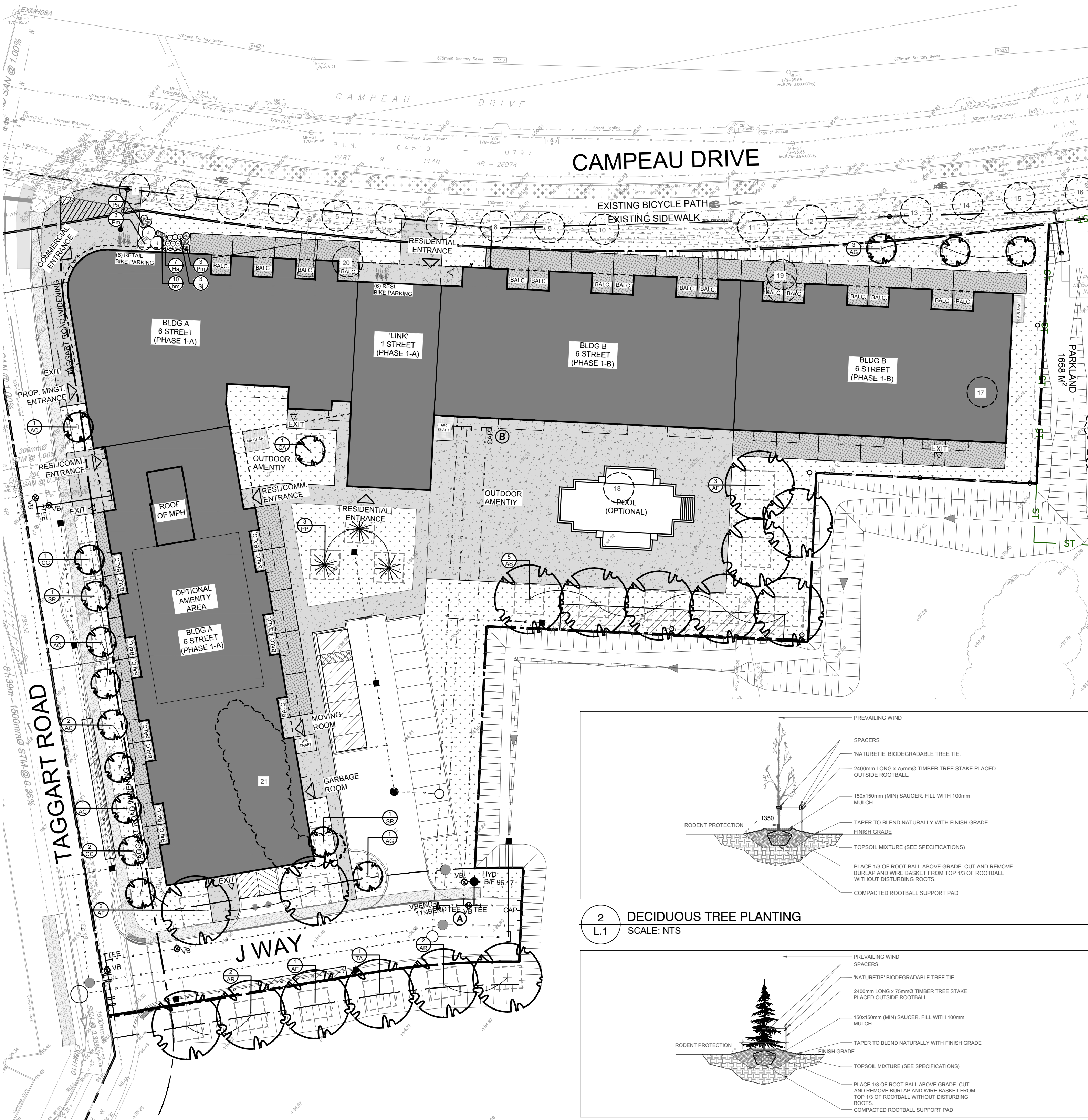




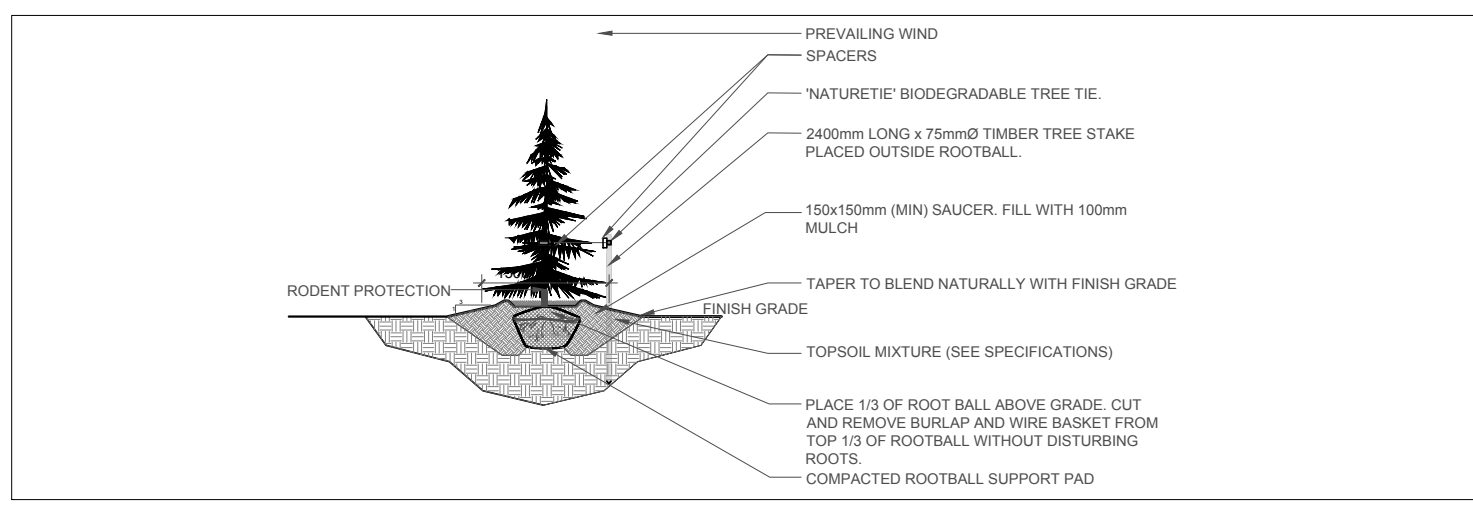
40-YEAR CANOPY COVER CALCULATION
 12,287 m² site area
 (16) Small Deciduous Trees Proposed (7m²)
 (16) Large Deciduous Trees Proposed (154m²)
 (3) Large Coniferous Trees Proposed (79m²)
=2,813m² canopy cover =22.9% canopy cover
 * Large deciduous trees calculated at 14m dia., Small deciduous trees calculated at 3m dia.

KEY PLAN: NTS



1 TREE CONSERVATION REPORT AND LANDSCAPE PLAN
 SCALE 1:400

2 DECIDUOUS TREE PLANTING
 SCALE: NTS



3 CONIFEROUS TREE PLANTING
 N.T.S.

EXISTING TREE LIST

| KEY | QTY | BOTANICAL NAME | COMMON NAME | SIZE | CONDITION | ACTION | OWNERSHIP | COMMENTS |
|-----|-----|-------------------------------|---------------------|-----------------|-----------|---------------|--------------------|--------------------------|
| 1 | 1 | <i>Acer ginnala</i> | Amur Maple | 60mm DBH | DEAD | To be removed | City of Ottawa | |
| 2 | 1 | <i>Acer ginnala</i> | Amur Maple | 60mm DBH | GOOD | To be removed | City of Ottawa | To be replaced by others |
| 3 | 1 | <i>Acer ginnala</i> | Amur Maple | 60mm DBH | GOOD | To be removed | City of Ottawa | To be replaced by others |
| 4 | 1 | <i>Acer ginnala</i> | Amur Maple | 60mm DBH | GOOD | To be removed | City of Ottawa | To be replaced by others |
| 5 | 1 | <i>Malus spp.</i> | Crabapple | 60mm DBH | DEAD | To be removed | City of Ottawa | To be replaced by others |
| 6 | 1 | <i>Malus spp.</i> | Crabapple | 60mm DBH | DEAD | To be removed | City of Ottawa | To be replaced by others |
| 7 | 1 | <i>Malus spp.</i> | Crabapple | 60mm DBH | DEAD | To be removed | City of Ottawa | To be replaced by others |
| 8 | 1 | <i>Malus spp.</i> | Crabapple | 60mm DBH | DEAD | To be removed | City of Ottawa | To be replaced by others |
| 9 | 1 | <i>Malus spp.</i> | Crabapple | 60mm DBH | DEAD | To be removed | City of Ottawa | To be replaced by others |
| 10 | 1 | <i>Syringa reticulata</i> | Japanese Tree Lilac | 60mm DBH | DEAD | To be removed | City of Ottawa | To be replaced by others |
| 11 | 1 | <i>Syringa reticulata</i> | Japanese Tree Lilac | 60mm DBH | GOOD | To be removed | City of Ottawa | To be replaced by others |
| 12 | 1 | <i>Syringa reticulata</i> | Japanese Tree Lilac | 60mm DBH | GOOD | To be removed | City of Ottawa | To be replaced by others |
| 13 | 1 | <i>Syringa reticulata</i> | Japanese Tree Lilac | 60mm DBH | GOOD | To be removed | City of Ottawa | To be replaced by others |
| 14 | 1 | <i>Syringa reticulata</i> | Japanese Tree Lilac | 60mm DBH | GOOD | To be removed | City of Ottawa | To be replaced by others |
| 15 | 1 | <i>Syringa reticulata</i> | Japanese Tree Lilac | 60mm DBH | GOOD | To be removed | City of Ottawa | To be replaced by others |
| 16 | 1 | <i>Malus spp.</i> | Crabapple | 60mm DBH | DEAD | To be removed | City of Ottawa | To be replaced by others |
| 17 | 1 | <i>Acer negundo</i> | Manitoba Maple | 7x100-300mm DBH | GOOD | To be removed | 8201 Campeau Drive | To be replaced by others |
| 18 | 1 | <i>Acer negundo</i> | Manitoba Maple | 250mm DBH | GOOD | To be removed | 8201 Campeau Drive | To be replaced by others |
| 19 | 1 | <i>Elaeagnus angustifolia</i> | Russian Olive | 800mm DBH | GOOD | To be removed | 8201 Campeau Drive | |
| 20 | 1 | <i>Populus deltoides</i> | Eastern Cottonwood | 300mm DBH | GOOD | To be removed | 8201 Campeau Drive | |
| 21 | * | <i>Populus deltoides</i> | Eastern Cottonwood | 100-150mm DBH | GOOD | To be removed | 8201 Campeau Drive | |

PROPOSED PLANT LIST

| KEY | QTY | BOTANICAL NAME | COMMON NAME | SIZE | CONDITION | REMARKS |
|-------------------------|-----|---|------------------------|------------|-----------|---------------|
| CONIFEROUS TREES | | | | | | |
| PP | 3 | <i>Picea pungens</i> | Colorado Spruce | 2000mm ht. | B&B | |
| DECIDUOUS TREES | | | | | | |
| * AC | 5 | <i>Amelanchier canadensis</i> | Shadblow Serviceberry | 50mm cal. | B&B | Multi-Stem |
| * AF | 6 | <i>Acer x freemanii</i> | Freeman's Maple | 50mm cal. | B&B | |
| AG | 5 | <i>Acer ginnala</i> | Amur Maple | 50mm cal. | B&B | |
| * AR | 4 | <i>Acer rubrum</i> | Red Maple | 50mm cal. | B&B | |
| * AS | 5 | <i>Acer saccharinum</i> | Silver Maple | 50mm cal. | B&B | |
| * CA | 1 | <i>Cornus alternifolia</i> | Pagoda Dogwood | 50mm cal. | B&B | Specimen |
| * CC | 3 | <i>Ceris canadensis</i> | Eastern Redbud | 50mm cal. | B&B | Multi-Stem |
| SR | 2 | <i>Syringa reticulata</i> | Japanese Tree Lilac | 50mm cal. | B&B | Single Leader |
| * TA | 1 | <i>Tilia americana 'Redmond'</i> | Redmond Linden | 50mm cal. | B&B | |
| EVERGREEN SHRUBS | | | | | | |
| Pm | 6 | <i>Pinus mugo 'Mughus'</i> | Mugo Pine | 600mm spr. | Potted | 1200mm o.c. |
| DECIDUOUS SHRUBS | | | | | | |
| Ha | 7 | <i>Hydrangea arborescens 'Annabelle'</i> | Annabelle Hydrangea | 600mm ht. | Potted | 800mm o.c. |
| Ps | 3 | <i>Philadelphus 'Snowbelle'</i> | Mock Orange | 800mm ht. | Potted | 2000mm o.c. |
| Sj | 3 | <i>Spiraea japonica 'Anthony Waterer'</i> | Anthony Waterer Spirea | 600mm ht. | Potted | 800mm o.c. |
| PERENNIALS | | | | | | |
| hm | 10 | <i>Hemerocallis 'Mini Stella'</i> | Mini Star Daylily | 150mm pot | Potted | 400mm o.c. |

* Denotes Native Species
 NOTE: All trees, shrubs, and perennial grasses are proposed on private property.

- GENERAL NOTES:**
- It is the responsibility of the appropriate contractor or official to report any errors, omissions or discrepancies on this plan with actual site conditions to the Landscape Architect before proceeding with construction.
 - The contractor is to notify all utility companies and authorities prior to any excavation and ascertain locations of underground services.
 - The contractor is to reinstaite all areas and items damaged as a result of construction activity.
 - The contractor is to comply with all pertinent codes and by-laws.
 - The contractor is to maintain a positive surface run-off throughout the entire construction period.
 - The Landscape Architect is not responsible for subsurface conditions.
 - The contractor is to identify all existing trees to remain on site with the Landscape Architect prior to construction.
 - The contractor is to stake the proposed location of all plant material in conjunction with the Landscape Architect prior to excavation.
 - Minimum distances for selected deciduous trees are as follows:
 - Building Foundations 7.5m
 - Sidewalks 1.5m
 - Public Streets 2.5m
 - Underground Infrastructure 2.0m
 - All trees within 1m of underground utility trenches are to be excavated by hand.
 - Remove all protective wrapping from tree trunks after installation.
 - Staking of trees shall only be performed if necessary.
 - Ensure that mulch is pulled back a min. distance of 75mm from base of tree trunk.

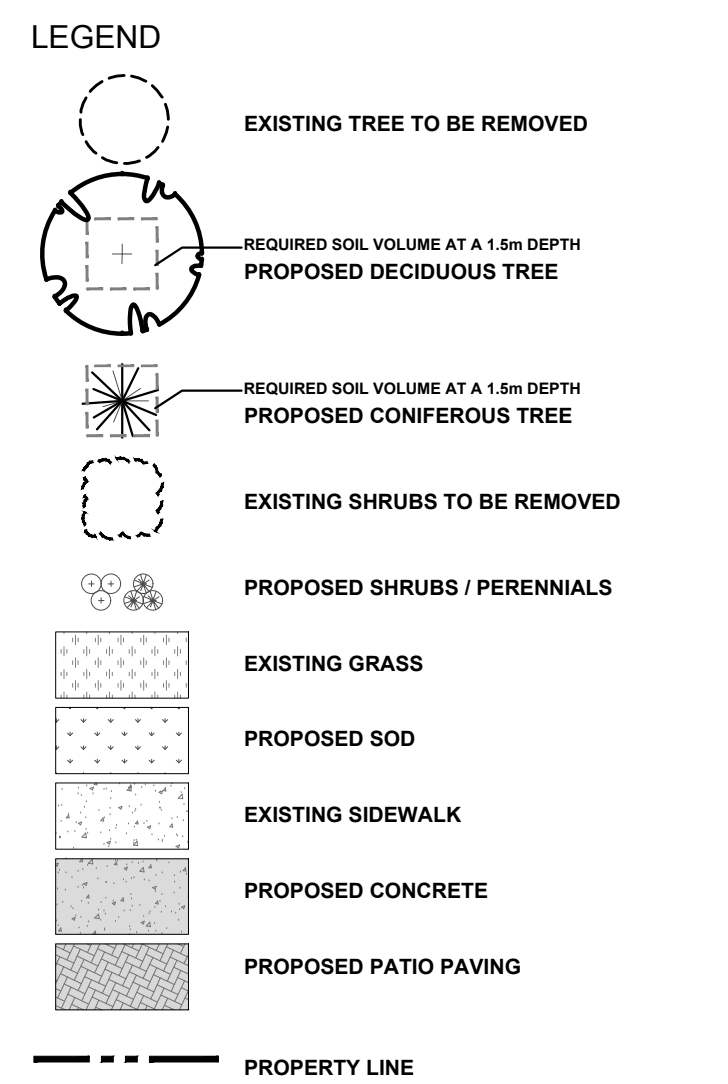
LEGAL DESCRIPTION:
 BLOCK 1
 REGISTERED PLAN 4M-1540
 CITY OF OTTAWA



CONSULTANTS
ARCHITECTS:
ARCADIS
 55 ST. CLAIR AVENUE WEST, TORONTO
 ON M4V 2Y7, CANADA tel 416 596 1930

CIVIL ENGINEERS:
ARCADIS
 333 PRESTON STREET SUITE 500, OTTAWA
 ON K1S 5N4, CANADA tel 613 727 0555

SURVEYORS:
FARLEY, SMITH AND DENIS SURVEYING LTD.
 UNIT 275, 30 COLONNADE ROAD, OTTAWA
 ON K2E 7J6, CANADA tel 613 727 8226



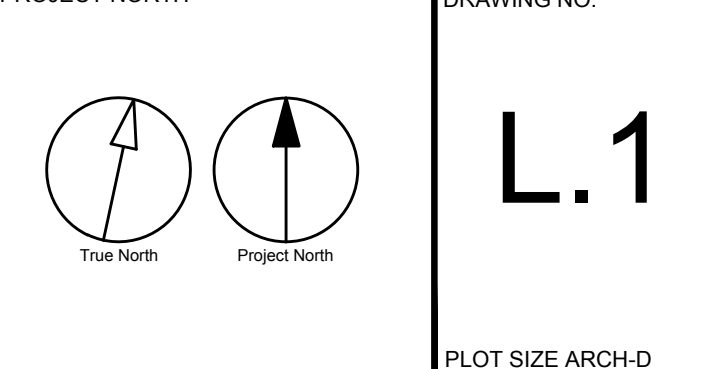
| | | | | |
|---|----------------------------------|------------|-----|----|
| 5 | ISSUED FOR SITE PLAN CONTROL | 07/22/2025 | CAT | JL |
| 4 | REVISED AS PER UPDATED SITE PLAN | 07/18/2025 | CAT | JL |
| 3 | GRADING AND SERVICES UPDATED | 07/17/2025 | WF | JL |
| 2 | REVISED AS PER NEW SITE PLAN | 06/11/2025 | CAT | JL |
| 1 | ISSUED FOR REVIEW AND DISCUSSION | 05/30/2025 | CAT | JL |

JAMES B. LENNOX & ASSOCIATES INC.
LANDSCAPE ARCHITECTS
 3332 CARLING AVE. OTTAWA, ONTARIO K2H 5A8
 Tel. (613) 722-5168 Fax. (866) 343-3942

PROJECT
 CAMPEAU AND DIBSBURY
 8201 Campeau Drive / 303 Dibsby Road Phase 1

DRAWING
 TREE CONSERVATION REPORT AND LANDSCAPE PLAN

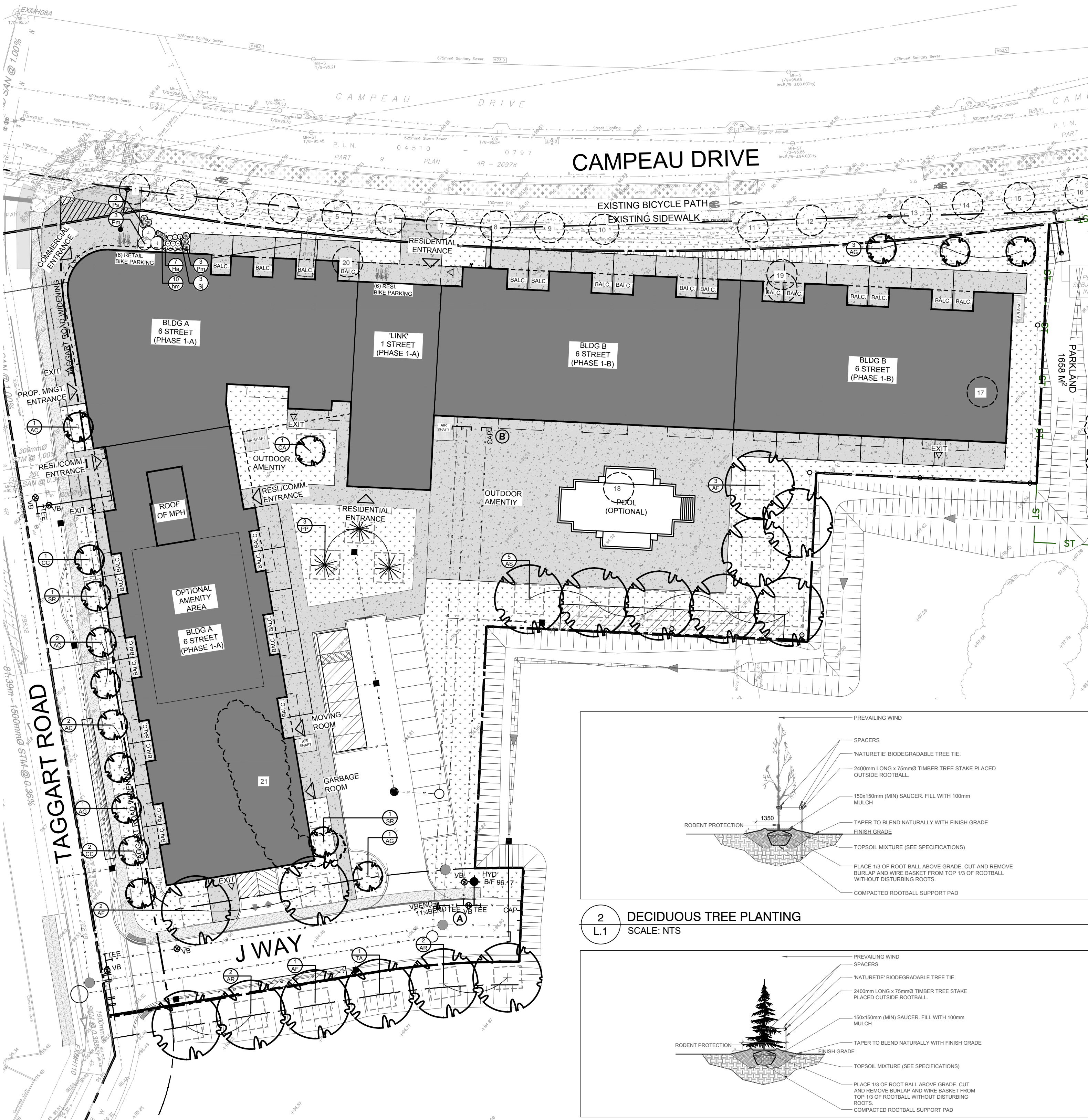
| | |
|-------------|------------|
| SCALE | AS SHOWN |
| START DATE | APRIL 2025 |
| PROJECT NO. | 25MIS2531 |





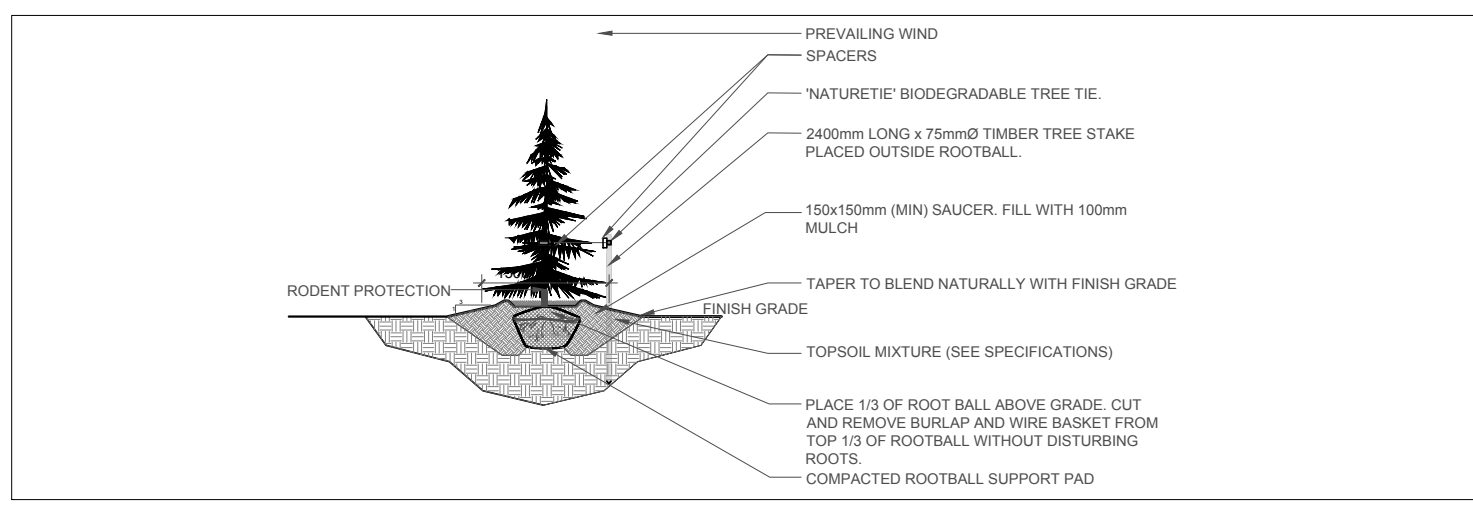
KEY PLAN: NTS

40-YEAR CANOPY COVER CALCULATION
 12,287 m² site area
 (16) Small Deciduous Trees Proposed (7m²)
 (16) Large Deciduous Trees Proposed (154m²)
 (3) Large Coniferous Trees Proposed (79m²)
=2,813m² canopy cover =22.9% canopy cover
 * Large deciduous trees calculated at 14m dia., Small deciduous trees calculated at 3m dia.



1 TREE CONSERVATION REPORT AND LANDSCAPE PLAN
 SCALE 1:400

2 DECIDUOUS TREE PLANTING
 SCALE: NTS



3 CONIFEROUS TREE PLANTING
 N.T.S.

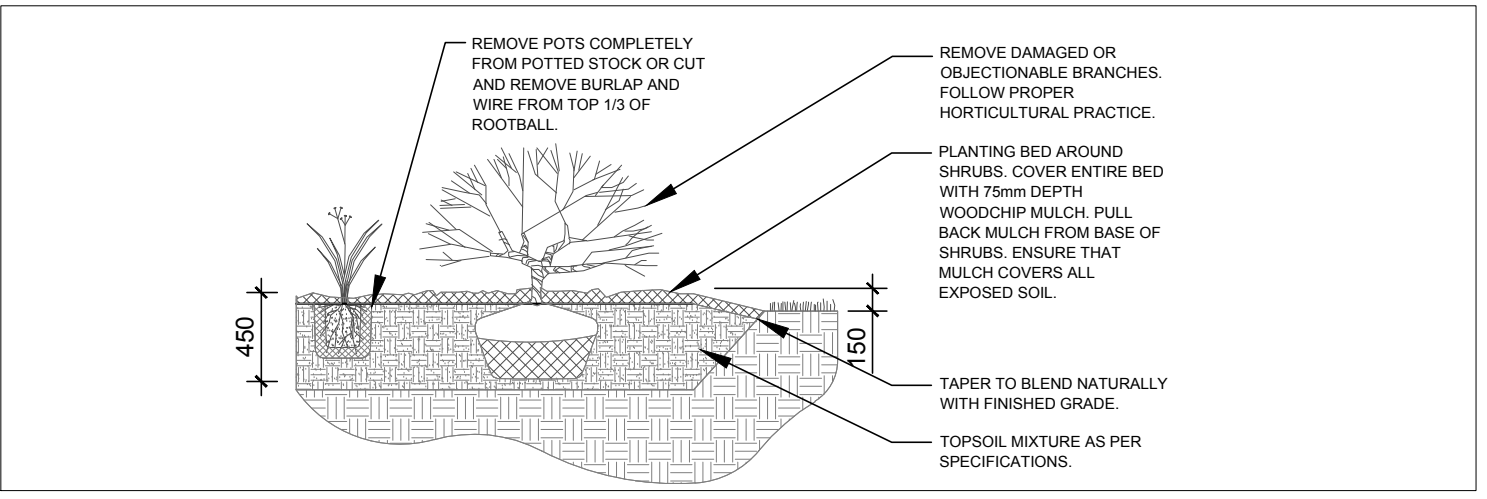
EXISTING TREE LIST

| KEY | QTY | BOTANICAL NAME | COMMON NAME | SIZE | CONDITION | ACTION | OWNERSHIP | COMMENTS |
|-----|-----|-------------------------------|---------------------|-----------------|-----------|---------------|--------------------|--------------------------|
| 1 | 1 | <i>Acer ginnala</i> | Amur Maple | 60mm DBH | DEAD | To be removed | City of Ottawa | |
| 2 | 1 | <i>Acer ginnala</i> | Amur Maple | 60mm DBH | GOOD | To be removed | City of Ottawa | To be replaced by others |
| 3 | 1 | <i>Acer ginnala</i> | Amur Maple | 60mm DBH | GOOD | To be removed | City of Ottawa | To be replaced by others |
| 4 | 1 | <i>Acer ginnala</i> | Amur Maple | 60mm DBH | GOOD | To be removed | City of Ottawa | To be replaced by others |
| 5 | 1 | <i>Malus spp.</i> | Crabapple | 60mm DBH | DEAD | To be removed | City of Ottawa | To be replaced by others |
| 6 | 1 | <i>Malus spp.</i> | Crabapple | 60mm DBH | DEAD | To be removed | City of Ottawa | To be replaced by others |
| 7 | 1 | <i>Malus spp.</i> | Crabapple | 60mm DBH | DEAD | To be removed | City of Ottawa | To be replaced by others |
| 8 | 1 | <i>Malus spp.</i> | Crabapple | 60mm DBH | DEAD | To be removed | City of Ottawa | To be replaced by others |
| 9 | 1 | <i>Malus spp.</i> | Crabapple | 60mm DBH | DEAD | To be removed | City of Ottawa | To be replaced by others |
| 10 | 1 | <i>Syringa reticulata</i> | Japanese Tree Lilac | 60mm DBH | DEAD | To be removed | City of Ottawa | To be replaced by others |
| 11 | 1 | <i>Syringa reticulata</i> | Japanese Tree Lilac | 60mm DBH | GOOD | To be removed | City of Ottawa | To be replaced by others |
| 12 | 1 | <i>Syringa reticulata</i> | Japanese Tree Lilac | 60mm DBH | GOOD | To be removed | City of Ottawa | To be replaced by others |
| 13 | 1 | <i>Syringa reticulata</i> | Japanese Tree Lilac | 60mm DBH | GOOD | To be removed | City of Ottawa | To be replaced by others |
| 14 | 1 | <i>Syringa reticulata</i> | Japanese Tree Lilac | 60mm DBH | GOOD | To be removed | City of Ottawa | To be replaced by others |
| 15 | 1 | <i>Syringa reticulata</i> | Japanese Tree Lilac | 60mm DBH | GOOD | To be removed | City of Ottawa | To be replaced by others |
| 16 | 1 | <i>Malus spp.</i> | Crabapple | 60mm DBH | DEAD | To be removed | City of Ottawa | To be replaced by others |
| 17 | 1 | <i>Acer negundo</i> | Manitoba Maple | 7x100-300mm DBH | GOOD | To be removed | 8201 Campeau Drive | To be replaced by others |
| 18 | 1 | <i>Acer negundo</i> | Manitoba Maple | 250mm DBH | GOOD | To be removed | 8201 Campeau Drive | To be replaced by others |
| 19 | 1 | <i>Elaeagnus angustifolia</i> | Russian Olive | 800mm DBH | GOOD | To be removed | 8201 Campeau Drive | |
| 20 | 1 | <i>Populus deltoides</i> | Eastern Cottonwood | 300mm DBH | GOOD | To be removed | 8201 Campeau Drive | |
| 21 | * | <i>Populus deltoides</i> | Eastern Cottonwood | 100-150mm DBH | GOOD | To be removed | 8201 Campeau Drive | |

PROPOSED PLANT LIST

| KEY | QTY | BOTANICAL NAME | COMMON NAME | SIZE | CONDITION | REMARKS |
|-------------------------|-----|---|------------------------|------------|-----------|---------------|
| CONIFEROUS TREES | | | | | | |
| PP | 3 | <i>Picea pungens</i> | Colorado Spruce | 2000mm ht. | B&B | |
| DECIDUOUS TREES | | | | | | |
| * AC | 5 | <i>Amelanchier canadensis</i> | Shadblow Serviceberry | 50mm cal. | B&B | Multi-Stem |
| * AF | 6 | <i>Acer x freemanii</i> | Freeman's Maple | 50mm cal. | B&B | |
| AG | 5 | <i>Acer ginnala</i> | Amur Maple | 50mm cal. | B&B | |
| * AR | 4 | <i>Acer rubrum</i> | Red Maple | 50mm cal. | B&B | |
| * AS | 5 | <i>Acer saccharinum</i> | Silver Maple | 50mm cal. | B&B | |
| * CA | 1 | <i>Cornus alternifolia</i> | Pagoda Dogwood | 50mm cal. | B&B | Specimen |
| * CC | 3 | <i>Ceris canadensis</i> | Eastern Redbud | 50mm cal. | B&B | Multi-Stem |
| SR | 2 | <i>Syringa reticulata</i> | Japanese Tree Lilac | 50mm cal. | B&B | Single Leader |
| * TA | 1 | <i>Tilia americana 'Redmond'</i> | Redmond Linden | 50mm cal. | B&B | |
| EVERGREEN SHRUBS | | | | | | |
| Pm | 6 | <i>Pinus mugo 'Mughus'</i> | Mugo Pine | 600mm spr. | Potted | 1200mm o.c. |
| DECIDUOUS SHRUBS | | | | | | |
| Ha | 7 | <i>Hydrangea arborescens 'Annabelle'</i> | Annabelle Hydrangea | 600mm ht. | Potted | 800mm o.c. |
| Ps | 3 | <i>Philadelphus 'Snowbelle'</i> | Mock Orange | 800mm ht. | Potted | 2000mm o.c. |
| Sj | 3 | <i>Spiraea japonica 'Anthony Waterer'</i> | Anthony Waterer Spirea | 600mm ht. | Potted | 800mm o.c. |
| PERENNIALS | | | | | | |
| hm | 10 | <i>Hemerocallis 'Mini Stella'</i> | Mini Star Daylily | 150mm pot | Potted | 400mm o.c. |

* Denotes Native Species
 NOTE: All trees, shrubs, and perennial grasses are proposed on private property.



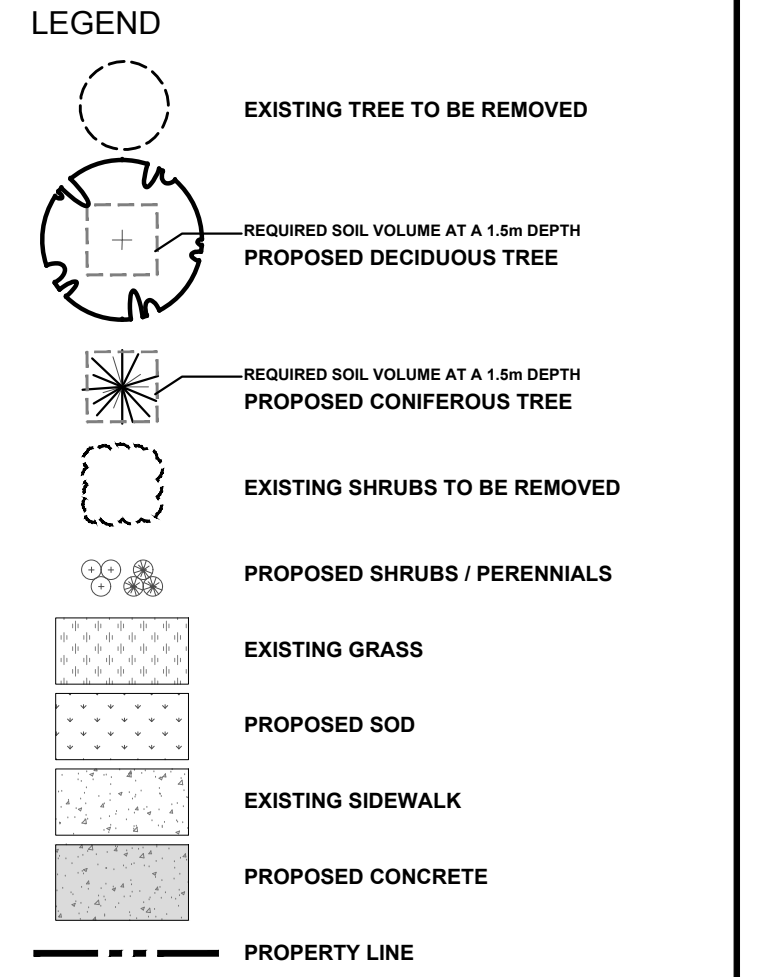
4 SHRUB/PERENNIAL PLANTING
 SCALE: NTS



CLIENT:
 CONSULTANTS:
 ARCHITECTS:
ARCADIS
 55 ST. CLAIR AVENUE WEST, TORONTO
 ON M4V 2Y7, CANADA tel 416 596 1930

CIVIL ENGINEERS:
ARCADIS
 333 PRESTON STREET SUITE 500, OTTAWA
 ON K1S 5N4, CANADA tel 613 727 0555

SURVEYORS:
FARLEY, SMITH AND DENIS SURVEYING LTD.
 UNIT 275, 30 COLONNADE ROAD, OTTAWA
 ON K2E 7J6, CANADA tel 613 727 8226



| | | | | |
|-----|----------------------------------|------------|-----|----|
| 6 | REVISED AS PER COMMENTS | 07/23/2025 | CAT | JL |
| 5 | ISSUED FOR SITE PLAN CONTROL | 07/22/2025 | CAT | JL |
| 4 | REVISED AS PER UPDATED SITE PLAN | 07/18/2025 | CAT | JL |
| 3 | GRADING AND SERVICES UPDATED | 07/17/2025 | WF | JL |
| 2 | REVISED AS PER NEW SITE PLAN | 06/11/2025 | CAT | JL |
| 1 | ISSUED FOR REVIEW AND DISCUSSION | 05/30/2025 | CAT | JL |
| No. | Issue | Date | DR | CK |

JAMES B. LENNOX & ASSOCIATES INC.
 LANDSCAPE ARCHITECTS
 3332 CARLING AVE. OTTAWA, ONTARIO K2H 5A8
 Tel. (613) 722-5168 Fax. (866) 343-3942

PROJECT
 CAMPEAU AND DIBSBURY
 8201 Campeau Drive / 303 Dibsby Road Phase 1

DRAWING
 TREE CONSERVATION REPORT AND
 LANDSCAPE PLAN

| | |
|-------------|------------|
| SCALE | AS SHOWN |
| START DATE | APRIL 2025 |
| PROJECT NO. | 25MIS2531 |

| | |
|------------------|---------------|
| PROJECT NORTH | DRAWING NO. |
| True North | Project North |
| L.1 | |
| PLOT SIZE ARCH-D | |

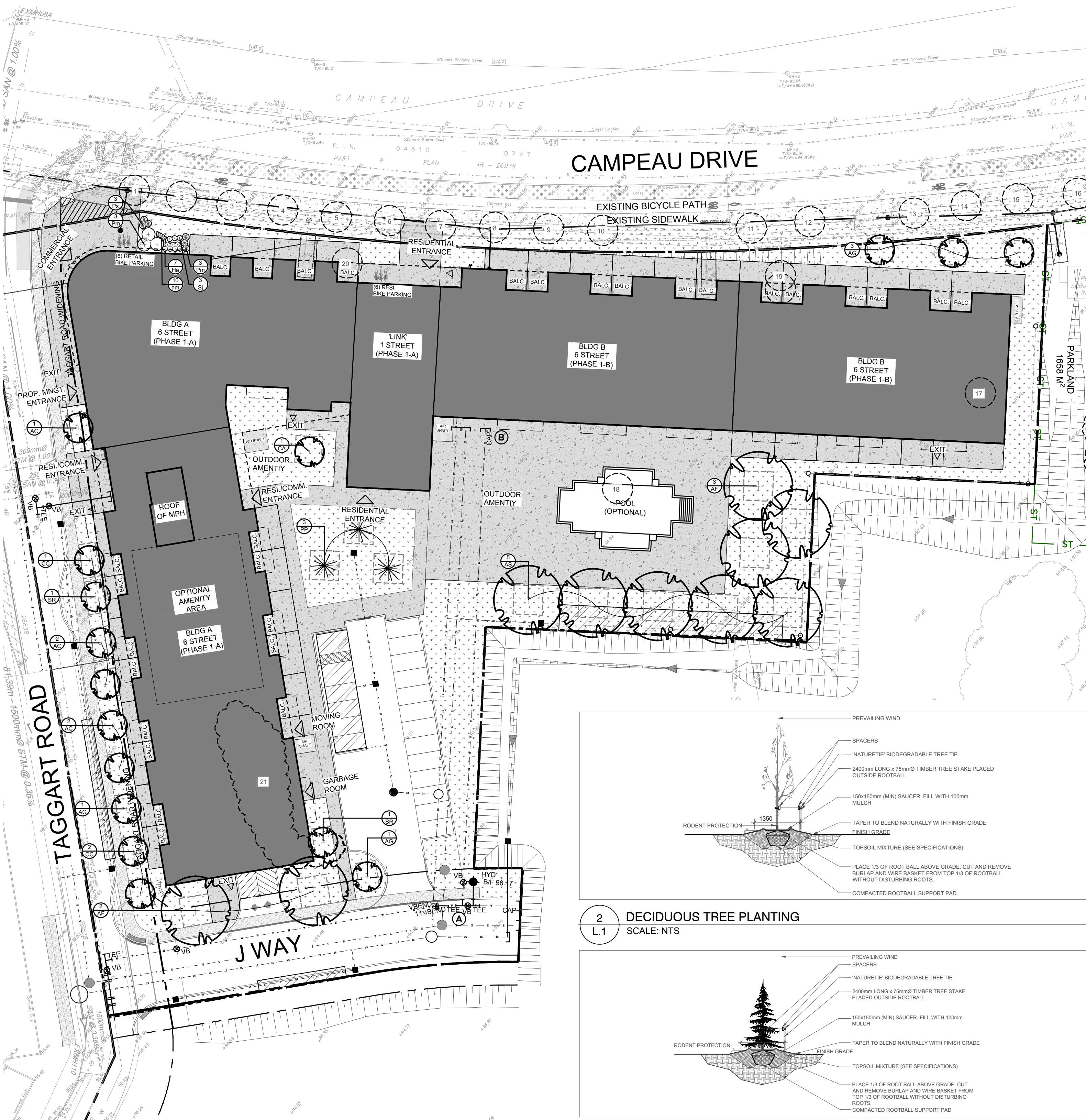
- GENERAL NOTES:**
- It is the responsibility of the appropriate contractor or official to report any errors, omissions or discrepancies on this plan with actual site conditions to the Landscape Architect before proceeding with construction.
 - The contractor is to notify all utility companies and authorities prior to any excavation and ascertain locations of underground services.
 - The contractor is to reinstaate all areas and items damaged as a result of construction activity.
 - The contractor is to comply with all pertinent codes and by-laws.
 - The contractor is to maintain a positive surface run-off throughout the entire construction period.
 - The Landscape Architect is not responsible for subsurface conditions.
 - The contractor is to identify all existing trees to remain on site with the Landscape Architect prior to construction.
 - The contractor is to stake the proposed location of all plant material in conjunction with the Landscape Architect prior to excavation.
 - Minimum distances for selected deciduous trees are as follows:
 - Building Foundations 7.5m
 - Sidewalks 1.5m
 - Public Streets 2.5m
 - Underground Infrastructure 2.0m
 - All trees within 1m of underground utility trenches are to be excavated by hand.
 - Remove all protective wrapping from tree trunks after installation.
 - Staking of trees shall only be performed if necessary.
 - Ensure that mulch is pulled back a min. distance of 75mm from base of tree trunk.

LEGAL DESCRIPTION:
 BLOCK 1
 REGISTERED PLAN 4M-1540
 CITY OF OTTAWA



KEY PLAN: NTS

40-YEAR CANOPY COVER CALCULATION
 12,287 m² site area
 (16) Small Deciduous Trees Proposed (7m²)
 (10) Large Deciduous Trees Proposed (154m²)
 (3) Large Coniferous Trees Proposed (79m²)
=1,889m² canopy cover =15.4% canopy cover
 * Large deciduous trees calculated at 14m dia., Small deciduous trees calculated at 3m dia.



1 TREE CONSERVATION REPORT AND LANDSCAPE PLAN
 SCALE: 1:400

2 DECIDUOUS TREE PLANTING
 SCALE: NTS

3 CONIFEROUS TREE PLANTING
 N.T.S.

4 SHRUB/PERENNIAL PLANTING
 SCALE: NTS

EXISTING TREE LIST

| KEY | QTY | BOTANICAL NAME | COMMON NAME | SIZE | CONDITION | ACTION | OWNERSHIP | COMMENTS |
|-----|-----|-------------------------------|---------------------|-----------------|-----------|---------------|--------------------|--------------------------|
| 1 | 1 | <i>Acer ginnala</i> | Amur Maple | 60mm DBH | DEAD | To be removed | City of Ottawa | |
| 2 | 1 | <i>Acer ginnala</i> | Amur Maple | 60mm DBH | GOOD | To be removed | City of Ottawa | To be replaced by others |
| 3 | 1 | <i>Acer ginnala</i> | Amur Maple | 60mm DBH | GOOD | To be removed | City of Ottawa | To be replaced by others |
| 4 | 1 | <i>Acer ginnala</i> | Amur Maple | 60mm DBH | GOOD | To be removed | City of Ottawa | To be replaced by others |
| 5 | 1 | <i>Malus spp.</i> | Crabapple | 60mm DBH | DEAD | To be removed | City of Ottawa | To be replaced by others |
| 6 | 1 | <i>Malus spp.</i> | Crabapple | 60mm DBH | DEAD | To be removed | City of Ottawa | To be replaced by others |
| 7 | 1 | <i>Malus spp.</i> | Crabapple | 60mm DBH | DEAD | To be removed | City of Ottawa | To be replaced by others |
| 8 | 1 | <i>Malus spp.</i> | Crabapple | 60mm DBH | DEAD | To be removed | City of Ottawa | To be replaced by others |
| 9 | 1 | <i>Malus spp.</i> | Crabapple | 60mm DBH | DEAD | To be removed | City of Ottawa | To be replaced by others |
| 10 | 1 | <i>Syringa reticulata</i> | Japanese Tree Lilac | 60mm DBH | DEAD | To be removed | City of Ottawa | To be replaced by others |
| 11 | 1 | <i>Syringa reticulata</i> | Japanese Tree Lilac | 60mm DBH | GOOD | To be removed | City of Ottawa | To be replaced by others |
| 12 | 1 | <i>Syringa reticulata</i> | Japanese Tree Lilac | 60mm DBH | GOOD | To be removed | City of Ottawa | To be replaced by others |
| 13 | 1 | <i>Syringa reticulata</i> | Japanese Tree Lilac | 60mm DBH | GOOD | To be removed | City of Ottawa | To be replaced by others |
| 14 | 1 | <i>Syringa reticulata</i> | Japanese Tree Lilac | 60mm DBH | GOOD | To be removed | City of Ottawa | To be replaced by others |
| 15 | 1 | <i>Syringa reticulata</i> | Japanese Tree Lilac | 60mm DBH | GOOD | To be removed | City of Ottawa | To be replaced by others |
| 16 | 1 | <i>Malus spp.</i> | Crabapple | 60mm DBH | DEAD | To be removed | City of Ottawa | To be replaced by others |
| 17 | 1 | <i>Acer negundo</i> | Manitoba Maple | 7x100-300mm DBH | GOOD | To be removed | 8201 Campeau Drive | To be replaced by others |
| 18 | 1 | <i>Acer negundo</i> | Manitoba Maple | 250mm DBH | GOOD | To be removed | 8201 Campeau Drive | To be replaced by others |
| 19 | 1 | <i>Elaeagnus angustifolia</i> | Russian Olive | 800mm DBH | GOOD | To be removed | 8201 Campeau Drive | |
| 20 | 1 | <i>Populus deltoides</i> | Eastern Cottonwood | 300mm DBH | GOOD | To be removed | 8201 Campeau Drive | |
| 21 | * | <i>Populus deltoides</i> | Eastern Cottonwood | 100-150mm DBH | GOOD | To be removed | 8201 Campeau Drive | |

PROPOSED PLANT LIST

| KEY | QTY | BOTANICAL NAME | COMMON NAME | SIZE | CONDITION | REMARKS |
|-------------------------|-----|---|------------------------|------------|-----------|---------------|
| CONIFEROUS TREES | | | | | | |
| PP | 3 | <i>Picea pungens</i> | Colorado Spruce | 2000mm ht. | B&B | |
| DECIDUOUS TREES | | | | | | |
| * AC | 5 | <i>Amelanchier canadensis</i> | Shadblow Serviceberry | 50mm cal. | B&B | Multi-Stem |
| * AF | 5 | <i>Acer x freemanii</i> | Freeman's Maple | 50mm cal. | B&B | |
| AG | 5 | <i>Acer ginnala</i> | Amur Maple | 50mm cal. | B&B | |
| * AS | 5 | <i>Acer saccharinum</i> | Silver Maple | 50mm cal. | B&B | |
| * CA | 1 | <i>Cornus alternifolia</i> | Pagoda Dogwood | 50mm cal. | B&B | Specimen |
| * CC | 3 | <i>Ceris canadensis</i> | Eastern Redbud | 50mm cal. | B&B | Multi-Stem |
| SR | 2 | <i>Syringa reticulata</i> | Japanese Tree Lilac | 50mm cal. | B&B | Single Leader |
| EVERGREEN SHRUBS | | | | | | |
| Pm | 6 | <i>Pinus mugo</i> 'Mughus' | Mugo Pine | 600mm spr. | Potted | 1200mm o.c. |
| DECIDUOUS SHRUBS | | | | | | |
| Ha | 7 | <i>Hydrangea arborescens</i> 'Annabelle' | Annabelle Hydrangea | 600mm ht. | Potted | 800mm o.c. |
| Ps | 3 | <i>Philadelphus</i> 'Snowbelle' | Mock Orange | 800mm ht. | Potted | 2000mm o.c. |
| Sj | 3 | <i>Spiraea japonica</i> 'Anthony Waterer' | Anthony Waterer Spirea | 600mm ht. | Potted | 800mm o.c. |
| PERENNIALS | | | | | | |
| hm | 10 | <i>Hemerocallis</i> 'Mini Stella' | Mini Star Daylily | 150mm pot | Potted | 400mm o.c. |

* Denotes Native Species
 NOTE: All trees, shrubs, and perennial grasses are proposed on private property.

CLIENT:



CONSULTANTS:

ARCADIS
 55 ST. CLAIR AVENUE WEST, TORONTO
 ON M4V 2Y7, CANADA tel 416 596 1930

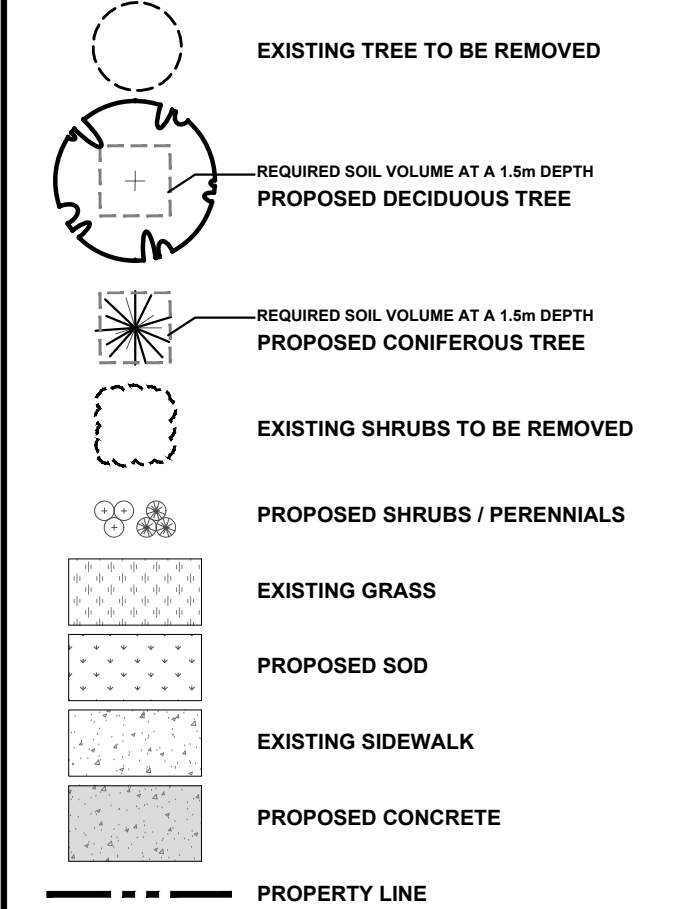
CIVIL ENGINEERS:

ARCADIS
 333 PRESTON STREET SUITE 500, OTTAWA
 ON K1S 5N4, CANADA tel 613 727 0555

SURVEYORS:

FARLEY, SMITH AND DENIS SURVEYING LTD.
 UNIT 275, 30 COLONNADE ROAD, OTTAWA
 ON K2E 7J6, CANADA tel 613 727 8226

LEGEND



| | | | | |
|---|----------------------------------|------------|-----|----|
| 7 | TREE PLANTING REVISED | 07/23/2025 | CAT | JL |
| 6 | REVISED AS PER COMMENTS | 07/23/2025 | CAT | JL |
| 5 | ISSUED FOR SITE PLAN CONTROL | 07/22/2025 | CAT | JL |
| 4 | REVISED AS PER UPDATED SITE PLAN | 07/18/2025 | CAT | JL |
| 3 | GRADING AND SERVICES UPDATED | 07/17/2025 | WF | JL |
| 2 | REVISED AS PER NEW SITE PLAN | 06/11/2025 | CAT | JL |
| 1 | ISSUED FOR REVIEW AND DISCUSSION | 05/30/2025 | CAT | JL |

JAMES B. LENNOX & ASSOCIATES INC.
 LANDSCAPE ARCHITECTS
 3332 CARLING AVE. OTTAWA, ONTARIO K2H 5A8
 Tel. (613) 722-5168 Fax. (866) 343-3942

PROJECT
 CAMPEAU AND DIBSBURY
 8201 Campeau Drive / 303 Dibsury Road Phase 1

DRAWING
 TREE CONSERVATION REPORT AND
 LANDSCAPE PLAN

SCALE
 AS SHOWN
 START DATE
 APRIL 2025
 PROJECT NO.
 25MIS2531

DRAWING NO.
L.1

PROJECT NORTH
 True North
 Project North

LEGAL DESCRIPTION:
 BLOCK 1
 REGISTERED PLAN 4M-1540
 CITY OF OTTAWA

PLOT SIZE ARCH-D

- GENERAL NOTES:**
- It is the responsibility of the appropriate contractor or official to report any errors, omissions or discrepancies on this plan with actual site conditions to the Landscape Architect before proceeding with construction.
 - The contractor is to notify all utility companies and authorities prior to any excavation and ascertain locations of underground services.
 - The contractor is to reinstaate all areas and items damaged as a result of construction activity.
 - The contractor is to comply with all pertinent codes and by-laws.
 - The contractor is to maintain a positive surface run-off throughout the entire construction period.
 - The Landscape Architect is not responsible for subsurface conditions.
 - The contractor is to identify all existing trees to remain on site with the Landscape Architect prior to construction.
 - The contractor is to stake the proposed location of all plant material in conjunction with the Landscape Architect.
 - Minimum distances for selected deciduous trees are as follows:
 - Building Foundations 7.5m
 - Sidewalks 1.5m
 - Public Streets 2.5m
 - Underground Infrastructure 2.0m
 - All trees within 1m of underground utility trenches are to be excavated by hand.
 - Remove all protective wrapping from tree trunks after installation.
 - Staking of trees shall only be performed if necessary.
 - Ensure that mulch is pulled back a min. distance of 75mm from base of tree trunk.