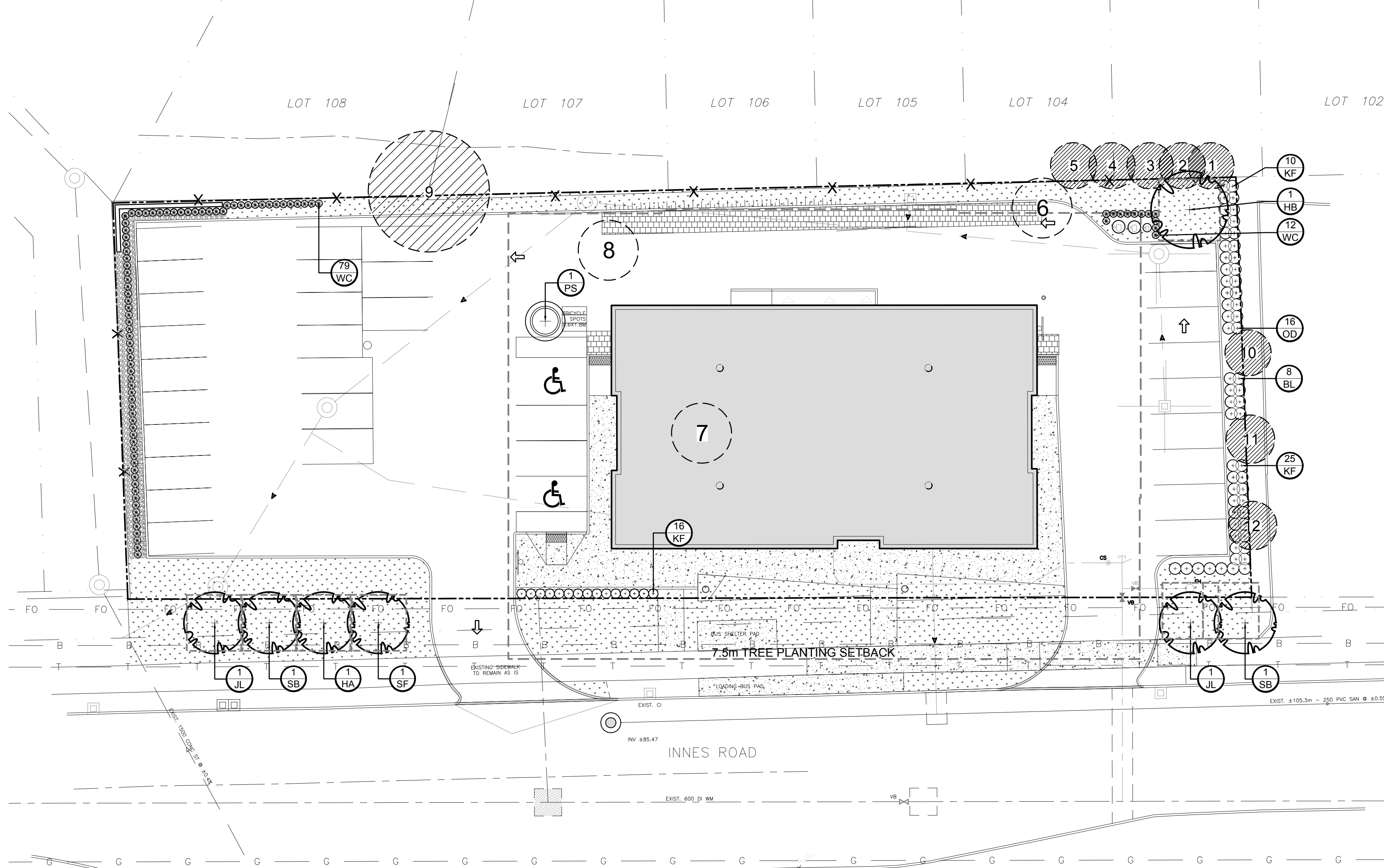


KEY	QTY	BOTANICAL NAME	COMMON NAME	SIZE	CONDITION	REMARKS	OWNERSHIP	COMMENTS
1	1	<i>Picea glauca</i>	White Spruce	160mm DBH	Good	To remain	436 Grassland Terrace	Good condition
2	1	<i>Thuja occidentalis</i>	Eastern White Cedar	150mm DBH	Good	To remain	436 Grassland Terrace	Good condition
3	1	<i>Picea glauca</i>	White Spruce	160mm DBH	Good	To remain	436 Grassland Terrace	Good condition
4	1	<i>Thuja occidentalis</i>	Eastern White Cedar	130mm DBH	Good	To remain	436 Grassland Terrace	Good condition
5	1	<i>Thuja occidentalis</i>	Eastern White Cedar	130mm DBH	Good	To remain	436 Grassland Terrace	Good condition
6	1	<i>Pinus strobus</i>	White Pine	430mm DBH	Good	To be removed	4419 Innes Road	Good condition
7	1	<i>Acer saccharum</i>	Sugar Maple	300mm DBH	Good	To be removed	4419 Innes Road	Good condition
8	1	<i>Acer platanoides</i>	Norway Maple	530mm DBH	Poor	To be removed	4419 Innes Road	Good condition
9	1	<i>Acer platanoides</i>	Norway Maple	450mm DBH	Fair	To Remain	Jointly owned	Good condition
10	1	<i>Ginkgo biloba</i>	Maidenhair Tree	130mm DBH	Good	To Remain	4419 Innes Road	Good condition
11	1	<i>Acer saccharum</i>	Sugar Maple	180mm DBH	Poor	To Remain	4419 Innes Road	Good condition
12	*	<i>Acer saccharum</i>	Sugar Maple	180mm DBH	Fair	To Remain	4405 Innes Road	Some dieback

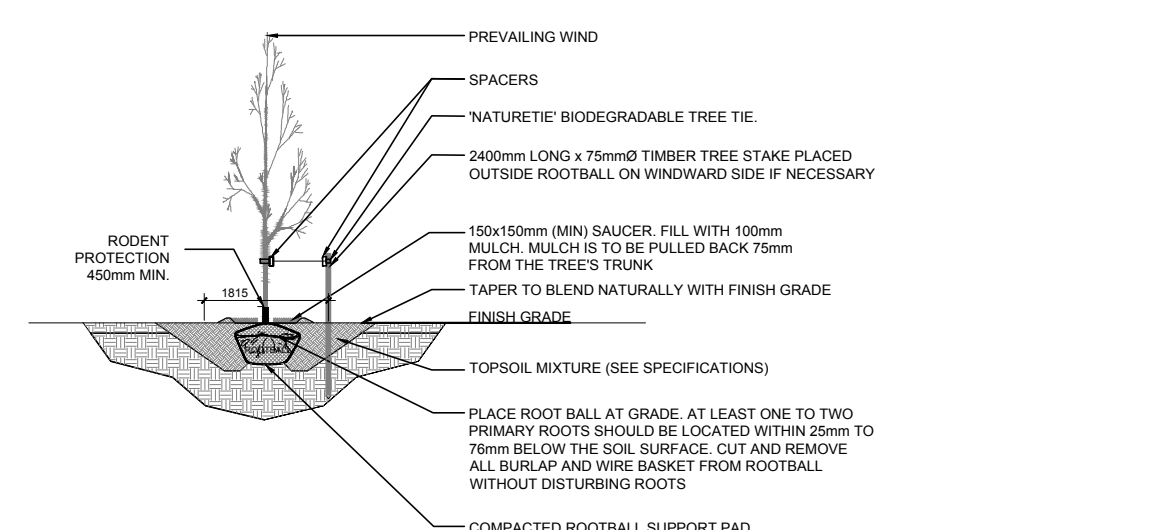


KEY PLAN: NTS

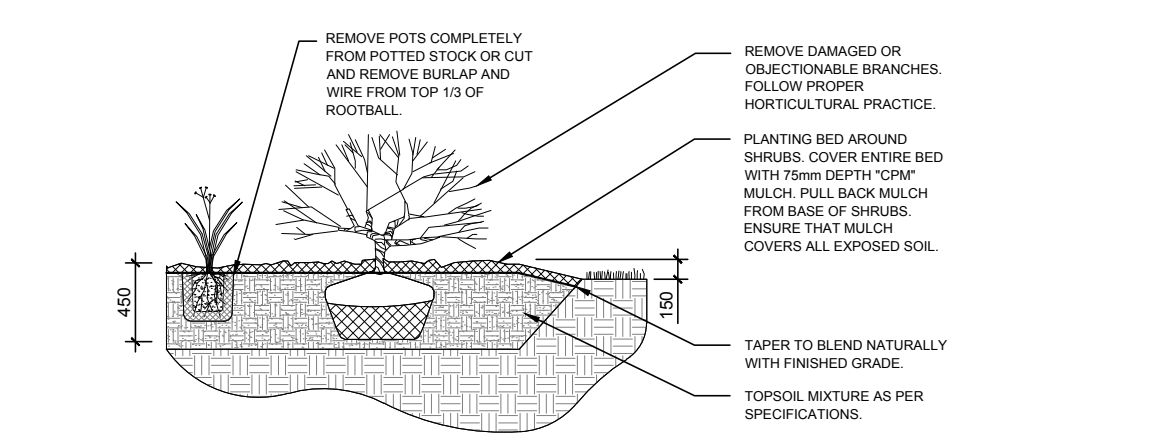
- GENERAL NOTES:**
- IT IS THE RESPONSIBILITY OF THE APPROPRIATE CONTRACTOR OR OFFICIAL TO REPORT ANY ERRORS, OMISSIONS OR DISCREPANCIES ON THIS PLAN WITH ACTUAL SITE CONDITIONS TO THE LANDSCAPE ARCHITECT BEFORE PROCEEDING WITH CONSTRUCTION.
  - THE CONTRACTOR IS TO NOTIFY ALL UTILITY COMPANIES AND AUTHORITIES PRIOR TO ANY EXCAVATION AND ASCERTAIN LOCATIONS OF UNDERGROUND SERVICES.
  - THE CONTRACTOR IS TO REINSTATE ALL AREAS AND ITEMS DAMAGED AS A RESULT OF CONSTRUCTION ACTIVITY.
  - THE CONTRACTOR IS TO COMPLY WITH ALL PERTINENT CODES AND BY-LAWS.
  - THE CONTRACTOR IS TO MAINTAIN A POSITIVE SURFACE RUN-OFF THROUGHOUT THE ENTIRE CONSTRUCTION PERIOD.
  - THE LANDSCAPE ARCHITECT IS NOT RESPONSIBLE FOR SUBSURFACE CONDITIONS.
  - THE CONTRACTOR IS TO IDENTIFY ALL EXISTING TREES TO REMAIN ON SITE WITH THE LANDSCAPE ARCHITECT PRIOR TO CONSTRUCTION.
  - THE CONTRACTOR IS TO STAKE THE PROPOSED LOCATION OF ALL PLANT MATERIAL IN CONJUNCTION WITH THE LANDSCAPE ARCHITECT PRIOR TO EXCAVATION.
  - MINIMUM DISTANCES FOR SELECTED DECIDUOUS TREES ARE AS FOLLOWS:
    - B.1. BUILDING FOUNDATIONS - 7.5M
    - 9.2. SIDEWALKS - 1.5M
    - 9.3. PUBLIC STREETS - 2.5M
    - 9.4. UNDERGROUND INFRASTRUCTURE - 2.0M
  - ALL TREES WITHIN 1M OF UNDERGROUND UTILITY TRENCHES ARE TO BE EXCAVATED BY HAND.
  - REMOVE ALL PROTECTIVE WRAPPING FROM TREE TRUNKS AFTER INSTALLATION.
  - STAKING OF TREES SHALL ONLY BE PERFORMED IF NECESSARY.
  - ENSURE THAT MULCH IS PULLED BACK A MINIMUM DISTANCE OF 75MM FROM BASE OF TREE TRUNK.
  - THE LANDSCAPE PLAN HAS BEEN PREPARED IN CONJUNCTION WITH THE GEOTECHNICAL INVESTIGATION PREPARED BY PATERSON GROUP APRIL 11TH, 2025

KEY	QTY	BOTANICAL NAME	COMMON NAME	SIZE	CONDITION	SPACING
<b>TREES</b>						
HA	1	<i>Crataegus crus-galli var inermis</i>	Thornless Cockspur Hawthorn	50mm cal.	B&B	4000mm o.c.
*HB	1	<i>Celtis occidentalis</i>	Hackberry	50mm cal.	B&B	
JL	2	<i>Syringa reticulata</i>	Japanese Tree Lilac	50mm cal.	B&B	4000mm o.c.
*SB	2	<i>Amelanchier canadensis</i>	Shadblow Serviceberry	50mm cal.	B&B	4000mm o.c.
*SF	1	<i>Amelanchier laevis 'JFS-ARB'</i>	Spring Flurry Serviceberry	50mm cal.	B&B	4000mm o.c.
<b>SHRUBS</b>						
PS	1	<i>Caragana arborecens</i>	Siberian Pea Shrub	3 gallon pot	Potted	
*WC	91	<i>Thuja occidentalis 'Clumps'</i>	White Cedar Clumps	1500mm ht	Potted	600mm o.c.
<b>ORNAMENTAL GRASSES</b>						
BL	8	<i>Leymus arenarius 'Blue Dune'</i>	Blue Lyme Grass	250mm pot	Potted	400 mm o.c.
KF	51	<i>Calamagrostis 'Karl Foerster'</i>	Karl Foerster Grass	250mm pot	Potted	800 mm o.c.
OD	16	<i>Calamagrostis 'Overdam'</i>	Overdam Grass	250mm pot	Potted	400 mm o.c.

\*INDICATES NATIVE SPECIES. ALL TREES ARE PROPOSED ON CITY PROPERTY- ALL SHRUBS AND ORNAMENTAL GRASSES ARE PROPOSED ON PRIVATE PROPERTY



2 DECIDUOUS TREE PLANTING SCALE: NTS



3 SHRUB / ORNAMENTAL GRASS PLANTING SCALE: NTS

<b>LEGAL DESCRIPTION:</b>	<b>40 YEAR CANOPY CALCULATION:</b>
4405 Innes Road: PART OF LOT A, CONCESSION 11, CUMBERLAND, AS IN N613193 SAVE AND EXCEPT PART 1 PLAN 4R19119.	-2,389 m2 site area
4409 Innes Road: PART OF LOT A, CONCESSION 11, CUMBERLAND, AS IN N623145 SAVE AND EXCEPT PART 2 PLAN 4R19119. OTTAWA.	-6 small trees proposed, 1 large tree proposed
	=196m2 canopy cover =8.2% canopy cover
	*Small tree calculated at 3m spread, large tree calculated at 14m spread

CLIENT **PREMIUM CONSTRUCTION**  
 Unit#30-174 Colonnade Rd.  
 Ottawa, Ontario, K2E 7J3

CONSULTANTS  
 ARCHITECTS: **MANCZARSKI P. ENG**  
 30 SAJ CRESCENT  
 OTTAWA, ONTARIO K1G 5N8  
 Tel: (613) 798-4882

&  
**Alexander Wilson Architect Inc.**  
 Admiralty Place  
 103-20 Gore Street  
 Kingston, Ontario, K7L 2L1



CIVIL ENGINEERS:  
**D. B. GRAY ENGINEERING INC.**  
 Stormwater Management - Grading & Drainage - Storm & Sanitary Sewer - Watermain

700 Long Point Circle  
 Ottawa, Ontario  
 613-425-8044  
 d.gray@dbgrayengineering.com

- LEGEND**
- EXISTING TREE TO REMAIN
  - EXISTING TREE TO BE REMOVED
  - 25-30m3 SOIL VOLUME AT A 1.5m DEPTH PROPOSED DECIDUOUS TREE
  - PROPOSED SHRUBS/GRASSES/PERENNIALS
  - PROPOSED SOD
  - PROPOSED RIVERSTONE
  - PROPOSED CONCRETE
  - PROPOSED INTERLOCK

4	REVISED PER CITY COMMENTS	04/08/2026	ML	JL
3	REVISED PER CITY COMMENTS	12/19/2025	ML	JL
2	REVISED PER CITY COMMENTS	10/03/2025	ML	JL
1	ISSUED FOR DISCUSSION AND REVIEW	07/22/2025	ML	JL
No.	Issue	Date	ML	DR
		APPROVED		CK

**JAMES B. LENNOX & ASSOCIATES INC.**  
 LANDSCAPE ARCHITECTS  
 3332 CARLING AVE. OTTAWA, ONTARIO K2H 5A8  
 Tel: (613) 722-5168 Fax: (866) 343-3942

PROJECT  
**IDEAL HEALTH CENTRE**  
 4405 AND 4409 INNES ROAD, OTTAWA ON

DRAWING  
**TREE CONSERVATION REPORT AND LANDSCAPE PLAN**

STAMP

SCALE  
 AS SHOWN

START DATE  
 JUNE 2025

PROJECT NO.  
 25MIS2538

PROJECT NORTH

DRAWING NO.  
**L.1**

PLOT SIZE ARCH-D

D07-12-25-0099