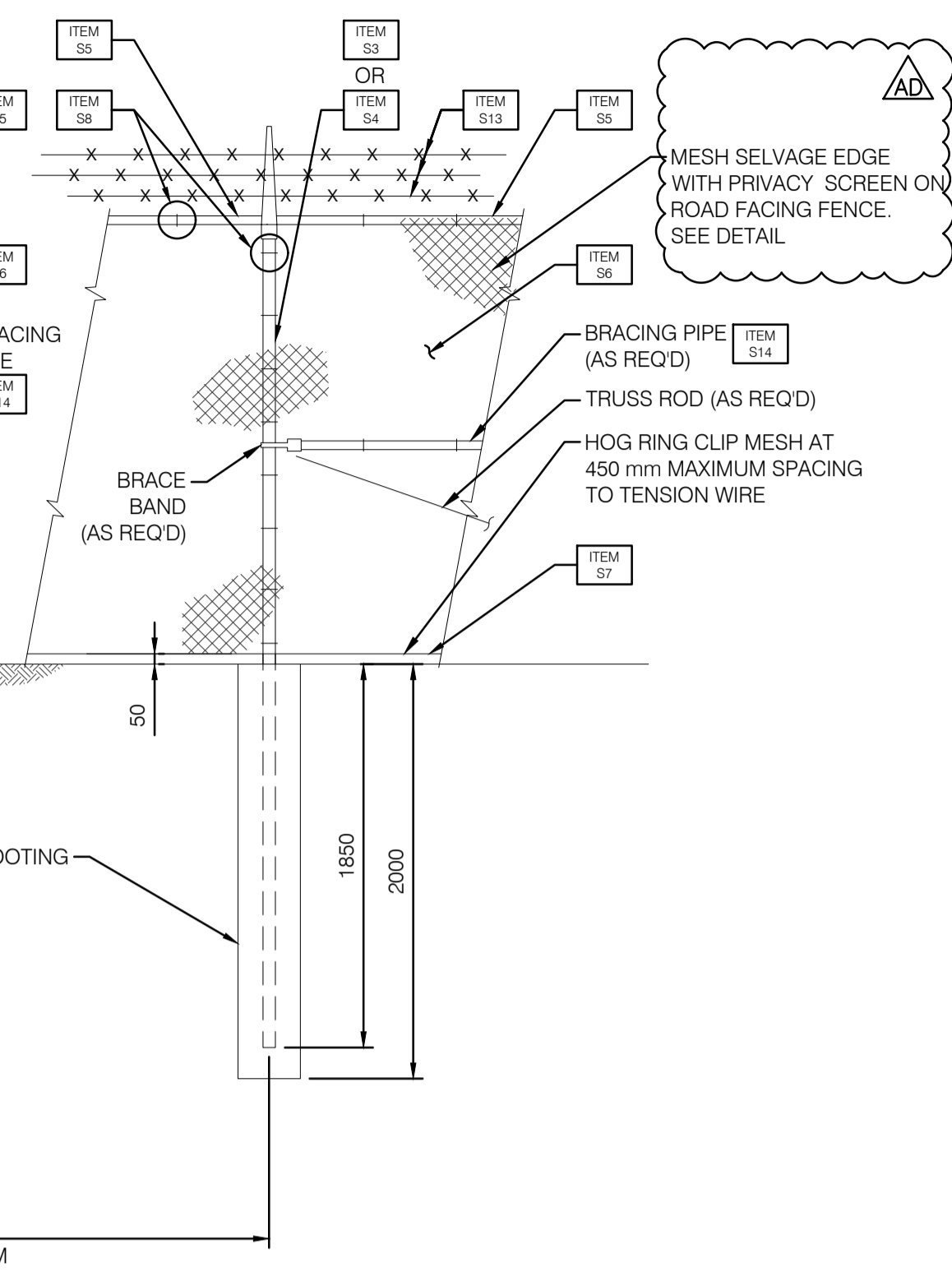
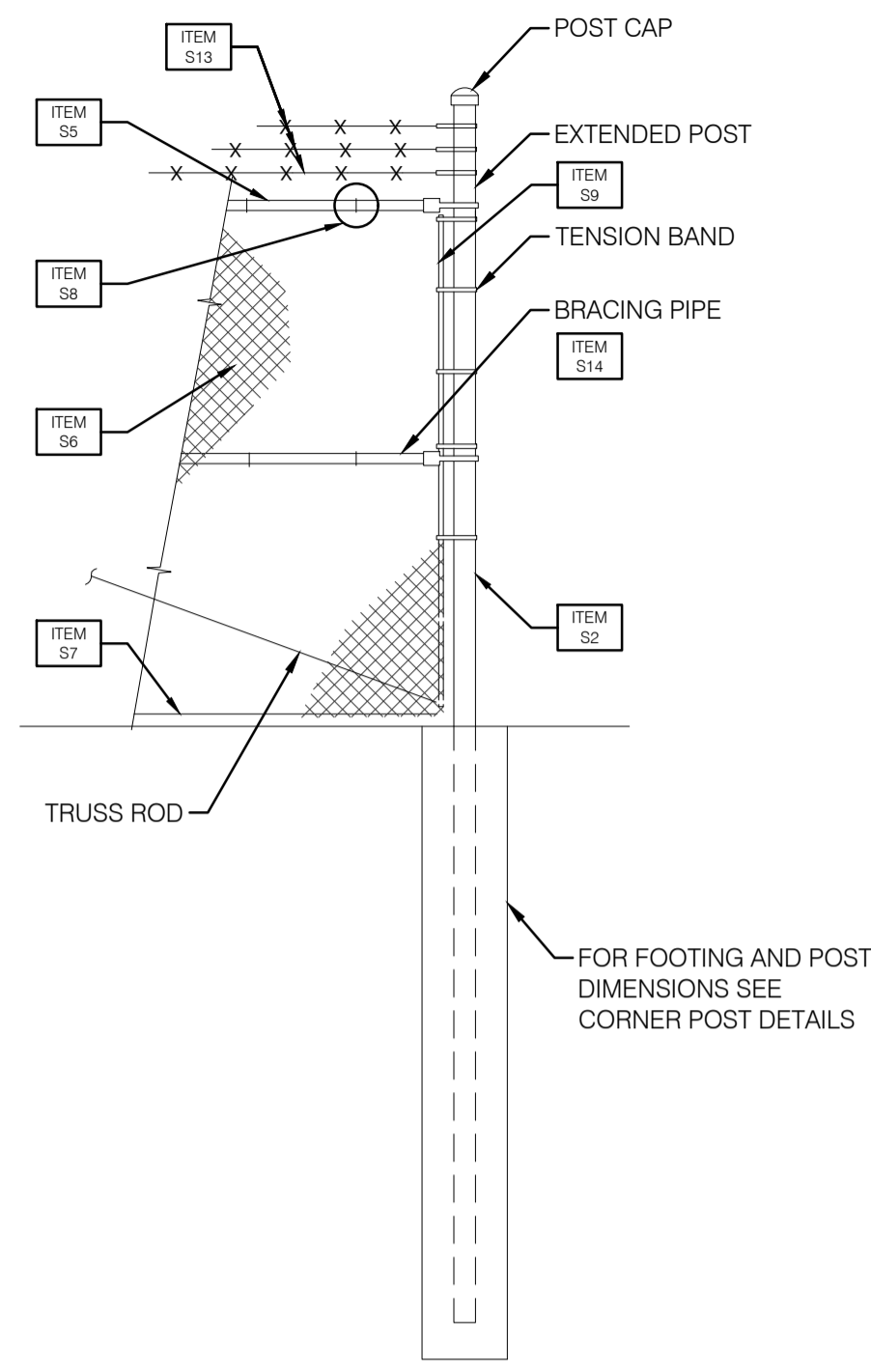


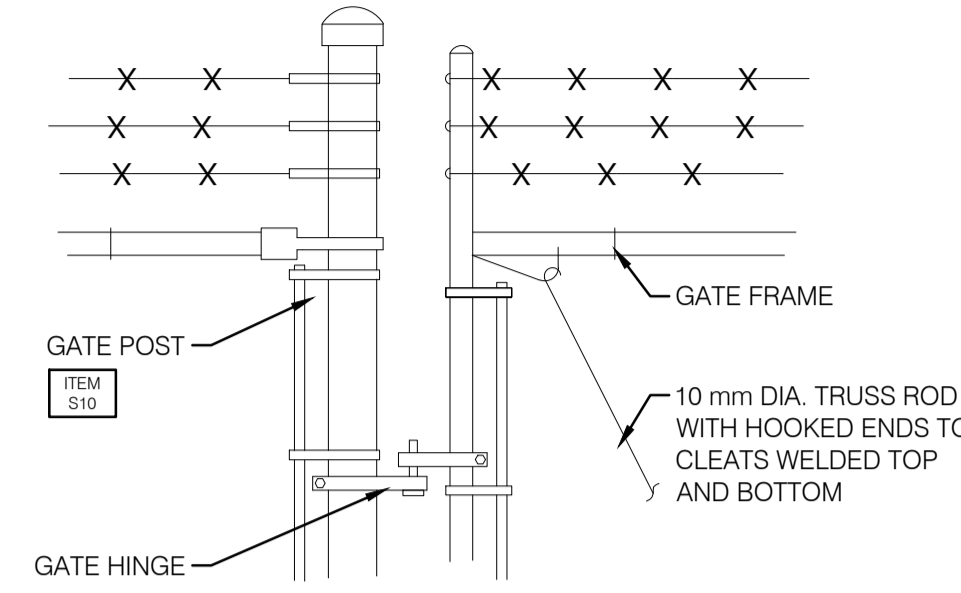
**TYPICAL CORNER POST DETAIL**  
1:30



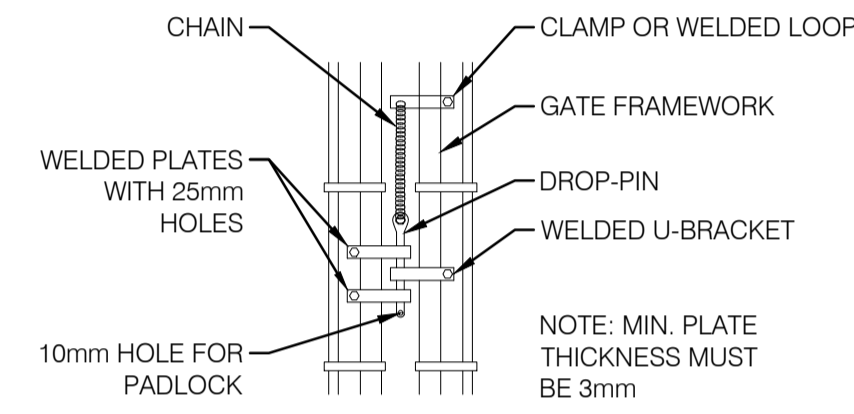
**TYPICAL LINE POST DETAIL  
(WITH OR WITHOUT BRACING)**  
1:30



**TYPICAL END POST DETAIL**  
1:30



**1 DETAIL**  
1:15



**2 DETAIL**  
1:15

**NOTES:**

- CHAIN LINK FENCE FABRIC SHALL BE IN ACCORDANCE WITH CAN/CGSB-138.1. CHAIN LINK FENCE FRAMEWORK AND GATE COMPONENTS SHALL BE IN ACCORDANCE WITH CAN/CGSB-138.2 AND CAN/CGSB-138.4 RESPECTIVELY.
- CONSTRUCTION SHALL MEET THE REQUIREMENTS OF CAN/CGSB-138.3.
- HOT-DIP GALVANIZING:  
(a) GALVANIZED COATING TO ALL STEEL WIRE CLIPS, BARS AND BANDS, MIN. 360 G/M.  
(b) POSTS AND RAIL CAPS GALVANIZED MIN. 600 G/M.  
(c) ALL BOLTS, NUTS AND WASHERS TO BE GALVANIZED.
- WELDS AFTER GALVANIZING AND MODIFICATIONS TO FENCE & GATES SHALL BE TOUCHED UP WITH TWO COATS OF ZINC-RICH PAINT.
- FOR DETAILS OF ELECTRICAL GROUNDING SEE ELECTRICAL DRAWINGS.
- CONCRETE FOOTING:  
MIX: AGGREGATE, SAND AND PORTLAND CEMENT, MINIMUM STRENGTH 20 MPA. CEMENT TYPE SHALL BE FINALIZED BY GEOTECHNICAL ENGINEER.  
FROST DEPTH: DEPTH OF FENCE FOOTING SHALL NOT BE LESS THAN FROST PENETRATION. PER THE GEOTECHNICAL REPORT, THE FROST DEPTH IS 1.8M.
- STRAINING POSTS WITH A BRACE RAILS ON EACH SIDE SHALL BE INSTALLED AT EQUAL INTERVALS NOT EXCEEDING 60M. ADDITIONAL STRAINING POSTS SHALL BE INSTALLED WHERE CHANGES IN VERTICAL ALIGNMENT OF THE FENCE EXCEED 30 DEGREES.
- FENCE POSTS SHALL BE SPACED AT MAX. 3M CENTER TO CENTER.
- TWO 10MM DIAMETER TRUSS RODS WITH TURNBUCKLES ARE REQUIRED AT EACH STRAINING POST.
- BRACE PIPE AND TRUSS ROD ARE AT CORNER, END, GATE AND STRAINING POSTS. BRACE RAILS ARE INSTALLED USING RAIL ENDS AND CENTRE BANDS AT EACH END.

**CORNER POST:** 88.9MM O.D. SCH. 40 STEEL PIPE COMPLETE WITH EXTENSION ARM, TWO HORIZONTAL 42.2MM O.D. SCH. 40 BRACING PIPES AND TENSION BARS WITH BRACE AND TENSION BANDS, TWO 10 DIA. TRUSS RODS AND TURNBUCKLE ASSEMBLIES.

**END POST:** 88.9MM O.D. SCH. 40 STEEL PIPE COMPLETE WITH CAP FOR END POST, ONE HORIZONTAL 42.2MM SCH. 40 O.D. BRACING PIPE AND ONE TENSION BAR WITH BRACE AND TENSION BANDS, ONE 10 DIA. TRUSS ROD AND TURNBUCKLE ASSEMBLY.

**LINE POST WITH BRACING:** 60.3MM SCH. 40 O.D. STEEL PIPE WITH EXTENSION ARM, ONE HORIZONTAL 42.2MM SCH. 40 O.D. STEEL BRACING PIPE WITH BRACE BANDS, ONE 10 DIA. TRUSS ROD AND TURNBUCKLE ASSEMBLY, 3.8MM DIA. (9 GA) WIRE TIES.

**LINE POST:** 60.3MM O.D. SCH. 40 STEEL PIPE WITH POST TOP AND 3.8MM DIA. (9 GA) WIRE TIES.

**TOP RAIL:** 42.2MM O.D. SCH. 40 STEEL PIPE INCLUDING SLIP-ON COUPLING SLEEVE AND SCREWS FOR EACH STD LENGTH.

**FABRIC:** TYPE 1 STEEL FABRIC WITH 50MM MESH AND 3.9MM DIA. (9 GA) WIRE. FABRIC WIRE SHALL BE TWISTED (MIN. 2 TURNS) AT TOP AND BOTTOM. INSTALL OPAQUE PRIVACY SCREEN (BLACK COLOR) ON FENCE FACING THE ROAD FROM BOEN OR EQUIVALENT APPROVED BY THE CLIENT.

**BOTTOM WIRE:** 5.0MM DIA. WIRE AT BOTTOM OF FABRIC COMPLETE WITH TURNBUCKLE AND TENSION BAND.

**WIRE TIES:** 3.8MM DIA. STEEL WIRE TIES SHALL BE TWISTED MIN 2 TURNS AND EXCESS TAILS TO BE CUT OFF CLOSELY AT THE TWISTS.

**TENSION BAR:** 20MM X 5MM ON TERMINAL POSTS AND GATES.  
**TENSION BAND:** 20MM X 3MM

**3000mm DOUBLE GATE POST:** 88.9MM O.D. SCH. 40 STEEL PIPE COMPLETE WITH CAP FOR END POST, ONE TENSION BAR BRACE AND TENSION BANDS, ONE 10 DIA. TRUSS ROD AND TURNBUCKLE ASSEMBLY.

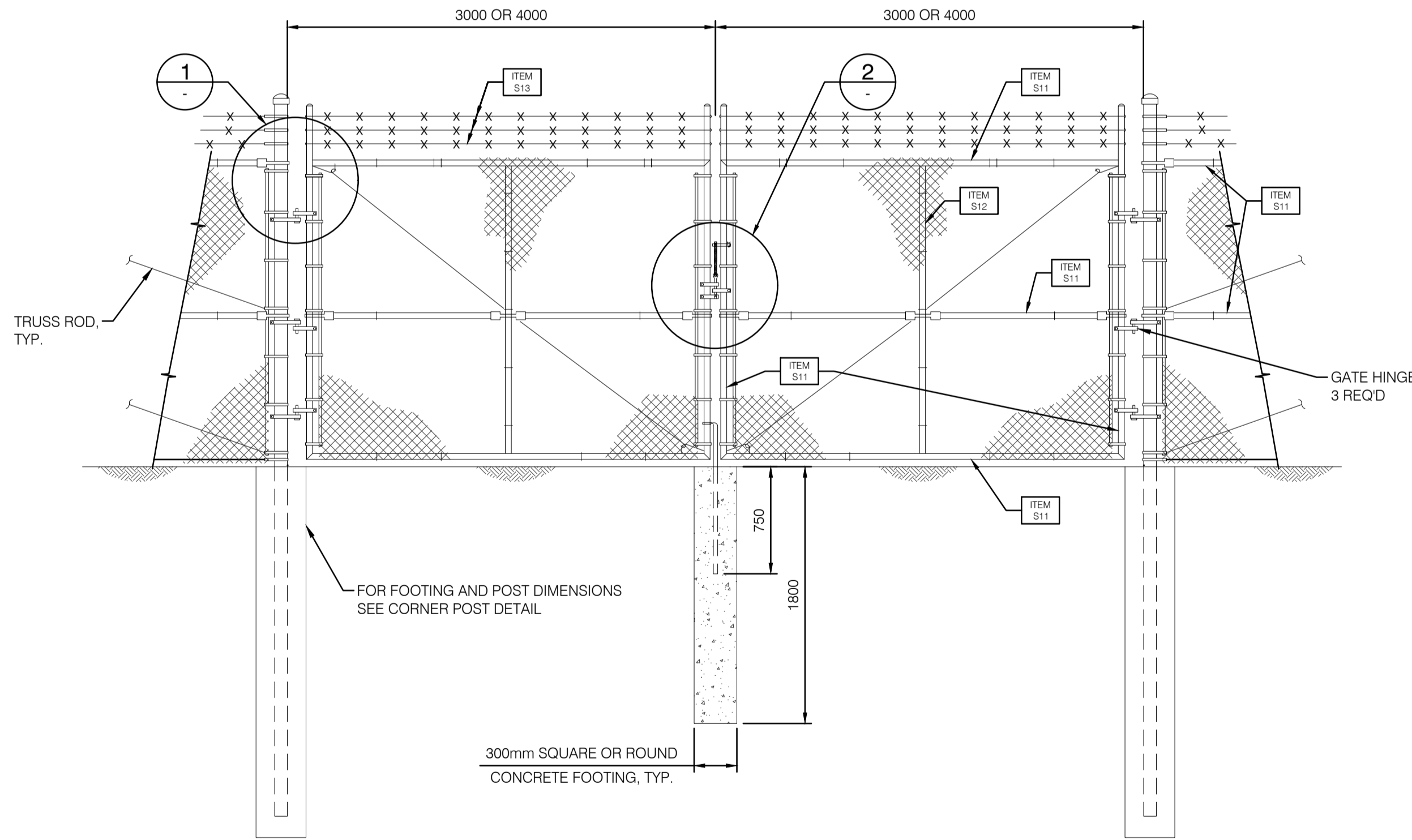
**4000mm DOUBLE GATE POST:** 114.3MM O.D. SCH. 40 STEEL PIPE COMPLETE WITH CAP FOR END POST, ONE TENSION BAR BRACE AND TENSION BANDS, ONE 10 DIA. TRUSS ROD AND TURNBUCKLE ASSEMBLY.

**3000mm DOUBLE GATE FRAME:** 42.2MM O.D. SCH. 40 STEEL PIPE.  
**4000mm DOUBLE GATE FRAME:** 48.3MM O.D. SCH. 40 STEEL PIPE.

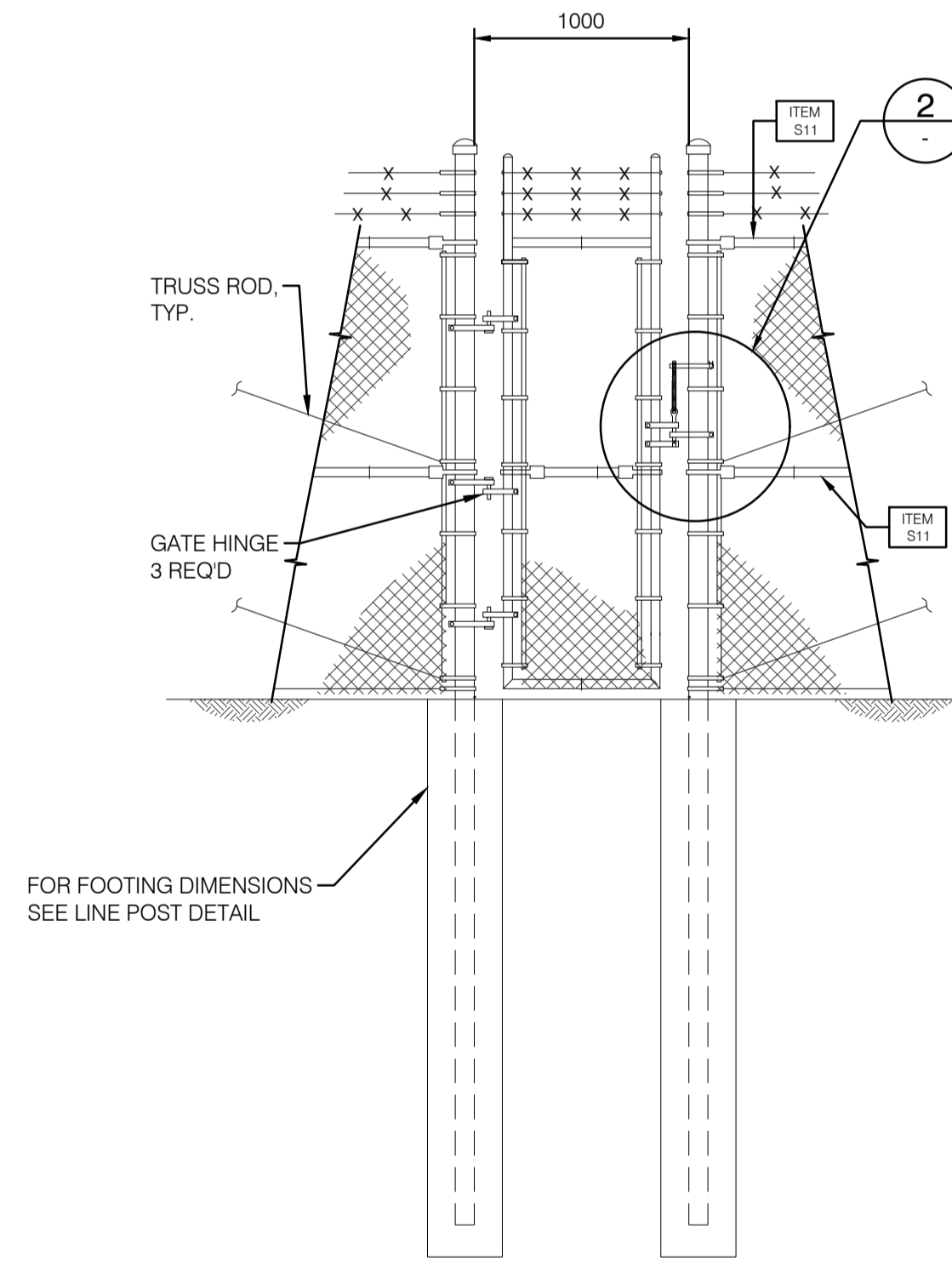
**3000mm DOUBLE GATE VERTICAL PIPE BRACE:** 42.2MM O.D. SCH. 40 STEEL PIPE.  
**4000mm DOUBLE GATE VERTICAL PIPE BRACE:** 48.3MM O.D. SCH. 40 STEEL PIPE.

**3 STRANDS OF BARBED WIRE** HOT-DIP GALVANIZED. BARBED WIRE SHALL BE GALVANIZED STEEL WITH 2.5MM DIA., BARBS 150MM APART, 4 SPIKES.

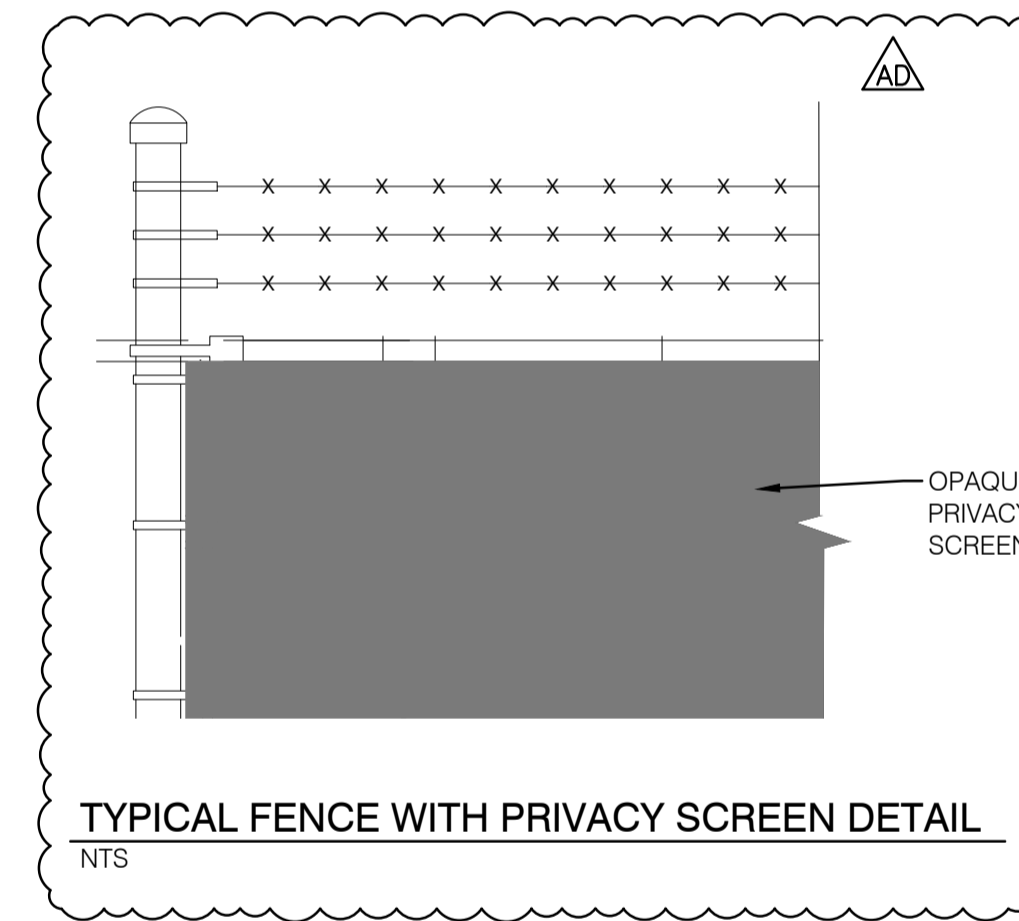
**BRACING PIPE:** 42.2MM O.D. SCH. 40 STEEL PIPE INCLUDING SLIP-ON COUPLING SLEEVE AND SCREWS FOR EACH STD LENGTH.



**TYPICAL DOUBLE GATE DETAIL**  
1:30

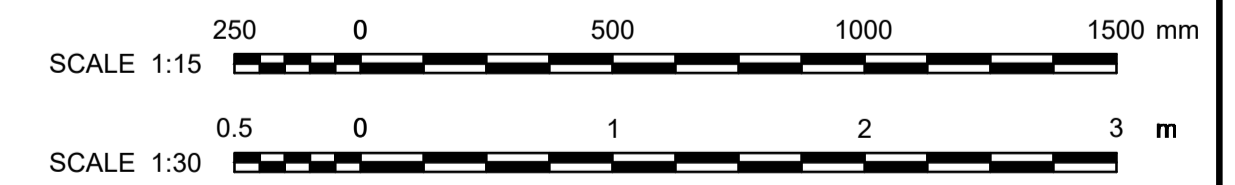


**TYPICAL MAN GATE DETAIL**  
1:30



**TYPICAL FENCE WITH PRIVACY SCREEN DETAIL**  
NTS

**FOR PERMITTING**



DRAWING No.	DESCRIPTION	REV	DESCRIPTION	PREPARED BY	CHECKED BY	DATE
		AD	FOR PERMITTING	B. THOMAS	V. BRUNELLE P.E.O. NO. 100617887	2025-06-29
		AC	FOR PERMITTING	B. THOMAS	V. BRUNELLE P.E.O. NO. 100617887	2025-11-05
		AB	FOR PERMITTING	E. AMELI	M. SHAHRAKI	2025-06-19
		AA	FOR COMMENTS	A. SIEW	F. HATAMI, P.ENG. P.E.O. NO. 100628041	2025-03-03
REFERENCE DRAWINGS		REVISIONS				

SEAL:

**Evologen**  
by Brookfield Renewable

CLIENT:

PROJECT: **SOUTH MARCH BESS**  
**2556 MARCHURST ROAD, OTTAWA**

TITLE: **CIVIL SECURITY FENCING CHAIN LINK FENCE STANDARD DETAILS**

PREPARED BY: A. SIEW  
CHECKED BY: A. SIEW  
SCALE: AS SHOWN  
DRAWING No.: **7154023-100000-41-D90-0001**

DRAFTED BY: S. PARK  
APPROVED BY: F. HATAMI, P.Eng, P.E.O. No. 100628041  
DATE: 2025-02-06

SHEET: **01** of 10  
SIZE: **A1**  
REV: **AD**