

NUMBER	MILESTONE/FAIT SAILLANT	DATE (Y/M/D)	INITIALS
4	ISSUED FOR SPA	2025/03/26	TG
3	REISSUED FOR TENDER	2025/03/26	TG
2	REISSUED FOR TENDER	2025/03/12	TG
1	ISSUED FOR TENDER	2025/12/15	TG

DESIGNED BY / CONCEU PAR: TG/SS

CHECKED BY / VERIFIE PAR: TG

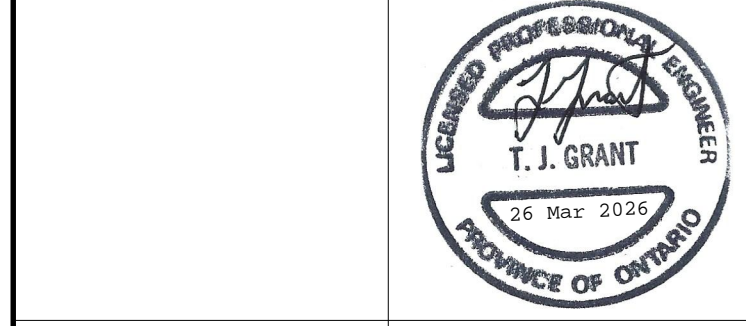
DRAWN BY / DESINE PAR: SS

SCALE / ECHELLE: 1 : 500

DETAIL NUMBER: 1
DRAWING TITLE: 1
SCALE: 1:1
SHEET NUMBER:

THIS DRAWING IS THE PROPERTY OF THE CITY OF OTTAWA AND ALL COPYRIGHT IS RESERVED. DIMENSIONS ON DRAWINGS ARE FOR ESTIMATING PURPOSES ONLY. IT IS THE RESPONSIBILITY OF EACH CONTRACTOR AND SUB-CONTRACTOR OR CONSULTANT TO CHECK AND VERIFY ALL DIMENSIONS AND CONDITIONS ON SITE. NOTIFY OWNER OF ANY ERRORS OR OMISSIONS PRIOR TO COMMENCING THE WORK. DO NOT SCALE THE DRAWINGS.

ARCHITECT / ARCHITECTE: T. J. GRANT



CONSULTANT / EXPERT-CONSEIL: T. J. GRANT

PROJECT / LOCATION / PROJET / ENDROIT: OTC ZEB-New Garage

Enter address here.

OTTAWA, ONTARIO

DRAWING / DESSIN: EAST STORM PROFILE

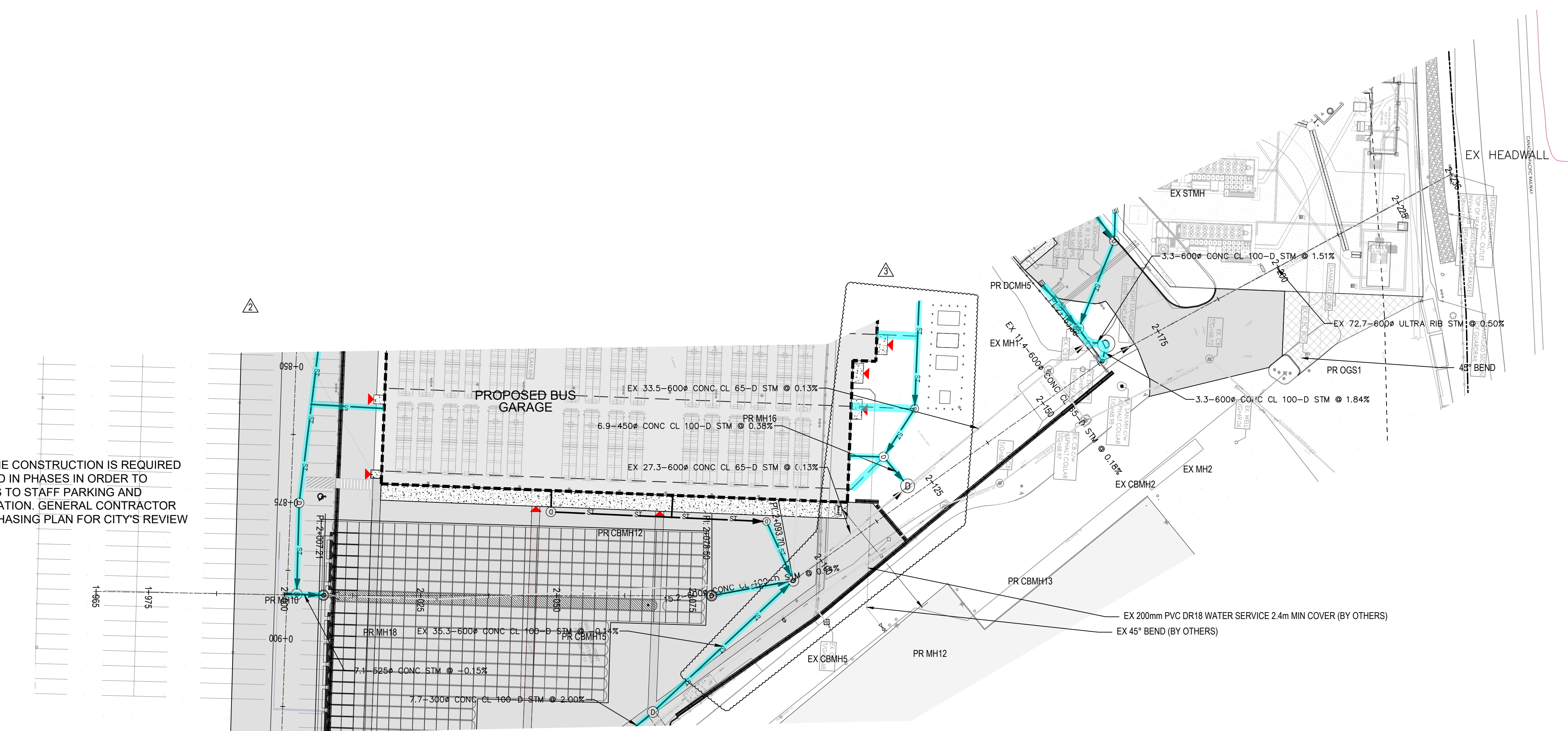
BUSINESS ENTITY / NUMERO DE L'ENTITE: 60716350

SHEET NO. / FEUILLE NO.: C009

LEGEND

- EX STORM SEWER
- EX SANITARY SEWER
- EX WATERMAIN
- PROP STORM SEWER
- PROP SANITARY SEWER
- PROP WATERMAIN
- SEWER TO BE INSULATED AS PER OPSD 1109.030 (NOTE: CONC PIPE CLASS TO BE 100-D)

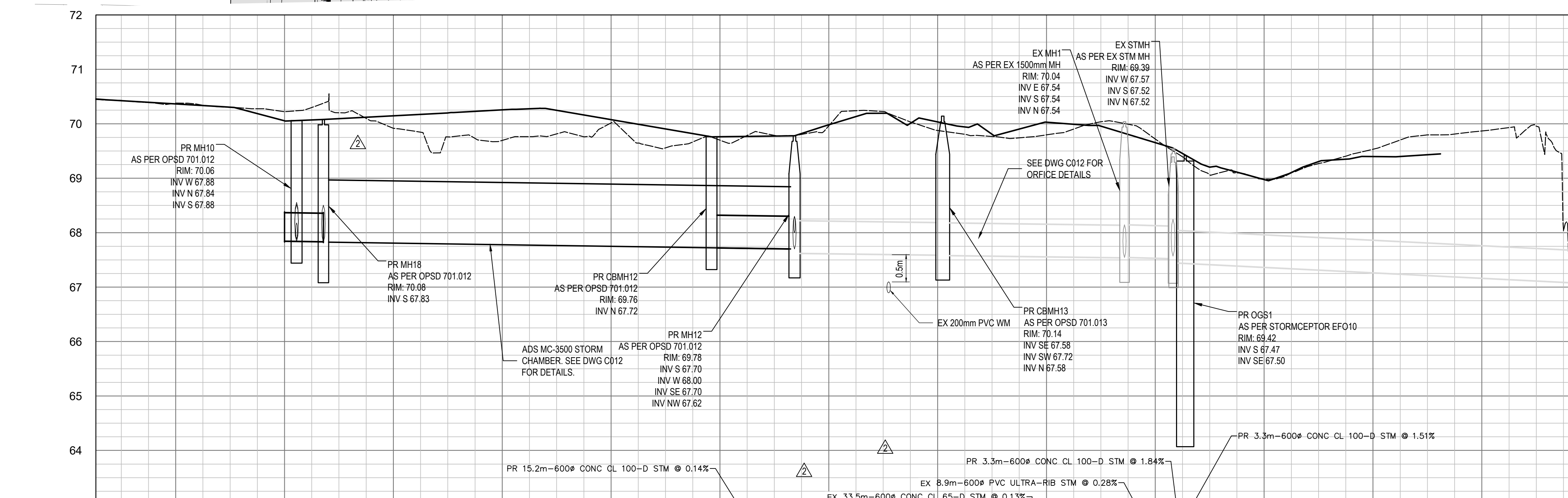
NOTES:
ORIFICE PLATES TO BE PLACED ON CBMH13, EX MH1 AND DCBMH5. SEE DRAWING C012 FOR ORIFICE PLATE LOCATION, SIZE AND INVERTS.



NOTES:
THE SANITARY LINE CONSTRUCTION IS REQUIRED TO BE COMPLETED IN PHASES IN ORDER TO MINIMIZE IMPACTS TO STAFF PARKING AND MAINTAIN CIRCULATION. GENERAL CONTRACTOR MUST SUBMIT A PHASING PLAN FOR CITY'S REVIEW AND APPROVAL

NOTES:
EXISTING UTILITIES, STORM AND SANITARY SYSTEMS TO BE LOCATED AND CONFIRMED IN FIELD PRIOR TO INSTALLATION OF SANITARY OUTLET. DISCREPANCIES ARE TO BE REPORTED TO THE ENGINEER.
ALL CROSSINGS OF UTILITIES, SEWERS, WATERMAINS AND STRUCTURES TO BE SUPPORTED AND PROTECTED WITHIN THE TRENCH. WHERE SANITARY SEWERS, STORM SEWERS AND WATERMAINS TO BE INSTALLED WITHIN EXISTING PAVED AREAS TO BE INSTALLED WITH TRENCH BOX STORM SEWER AND SERVICES ARE TO BE INSULATED AS PER OPSD 1109.030 WHERE COVER IS LESS THAN 1.5m.

1 | PLAN VIEW



PROPOSED STORM	PROPOSED SANITARY	EX/PR CENTERLINE ELEVATION	CHAINAGE
PR 7.1m-525# CONC STM @ 0.15%	EX 27.3m-600# CONC CL 65-D STM @ 0.13%	70.45, 70.36, 70.06, 70.05, 70.15, 70.15, 70.25, 70.25, 69.76, 69.75, 69.88, 69.88, 69.65, 69.65, 69.68, 69.68, 69.65, 69.65	1+965.34, 1+980, 2+000, 2+020, 2+040, 2+060, 2+080, 2+100, 2+120, 2+140, 2+160, 2+180, 2+200, 2+220, 2+235.09
EX 33.5m-600# PVC ULTRA-RIB STM @ 0.28%	PR 6.9m-450# CONC CL 100-D STM @ 0.38%	70.03, 70.03, 70.03, 70.03, 69.65, 69.65, 69.68, 69.68, 69.65, 69.65	
EX 72.7m-600# ULTRA RIB STM @ 0.50%		69.65, 69.65, 69.68, 69.68, 69.65, 69.65	

2 | PROFILE VIEW

SCALE: H 1:500 V 1 : 50

File Number D07-12-25-0095
Plan Number 19357