

**PAVEMENT DESIGN**

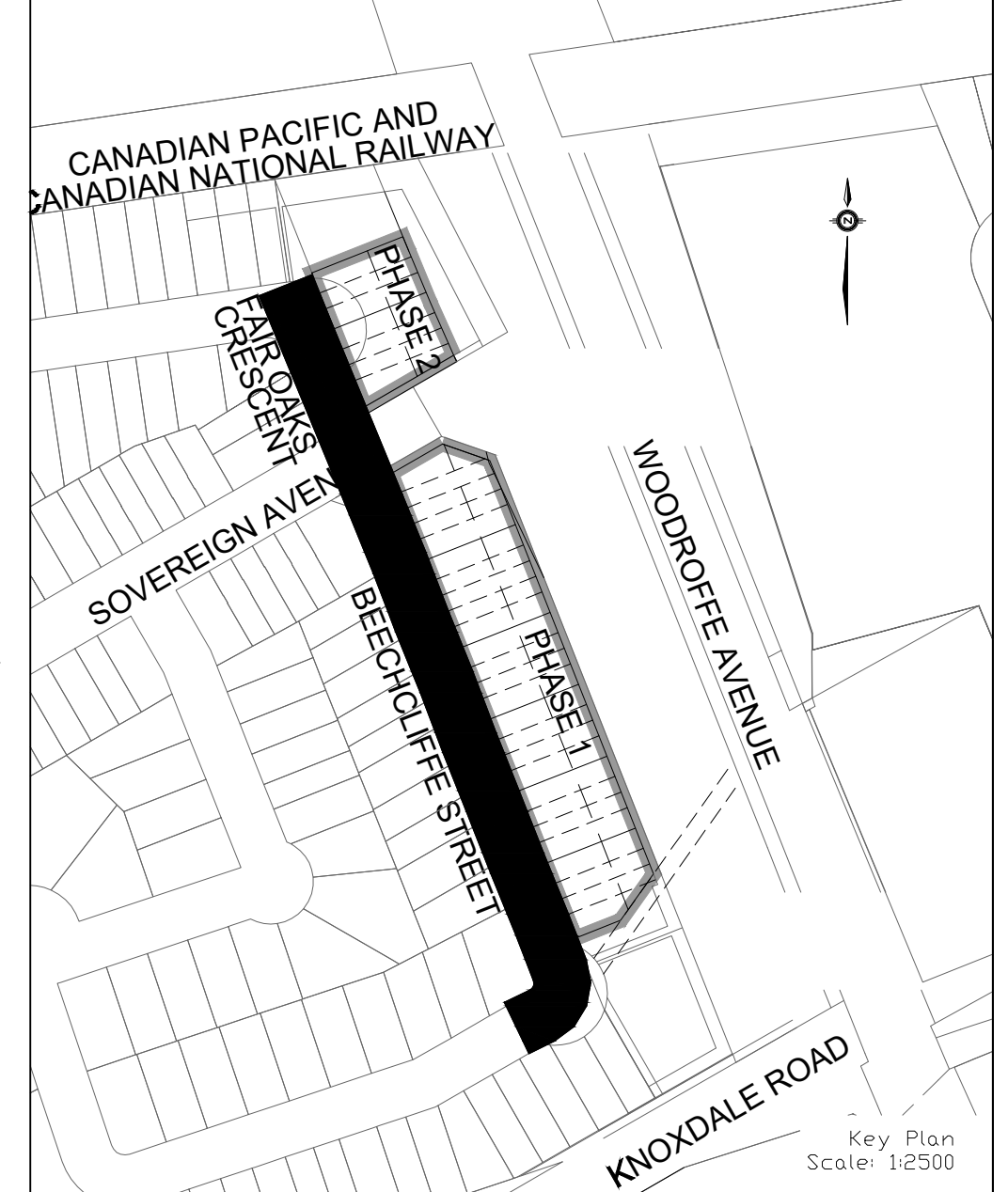
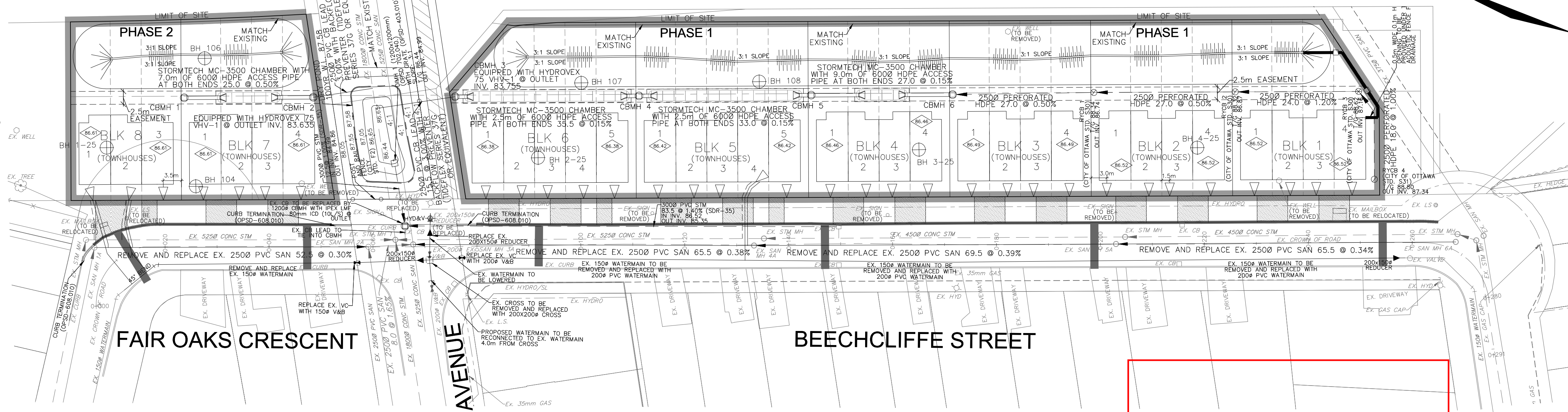
40mm HL-3 OR SUPERPAVE 12.5 ASPHALTIC CONCRETE  
 50mm HL-8 OR SUPERPAVE 19.0 ASPHALTIC CONCRETE  
 150mm OPSS GRANULAR A CRUSHED STONE  
 400mm OPSS GRANULAR B TYPE II

**NOTES:**

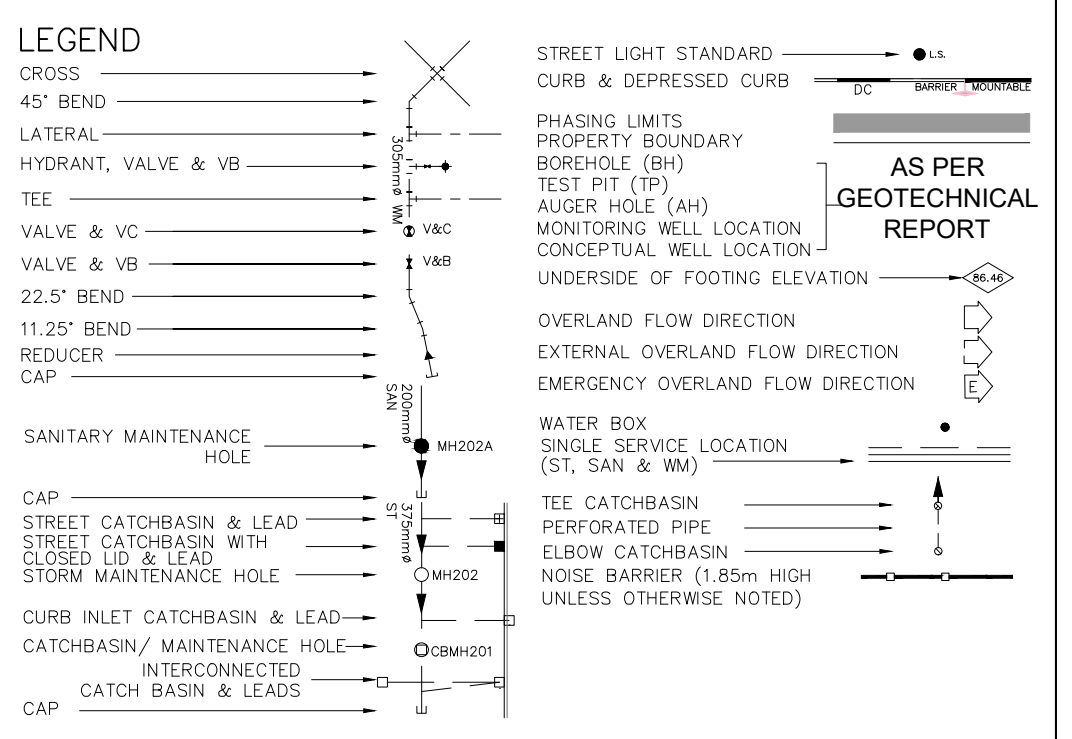
1. ANY DISTURBED AREA DURING CONSTRUCTION TO BE RESTORED TO THE ORIGINAL CONDITION OR BETTER TO THE SATISFACTION OF THE AUTHORITIES HAVING JURISDICTION.
2. CONTRACTOR TO VERIFY THE PRECISE LOCATIONS AND INVERT ELEVATIONS OF EX. UNDERGROUND SERVICES AND EX. UTILITIES PRIOR TO STARTING CONSTRUCTION.
3. ALL EXISTING TREES, SHRUBS ETC. WITHIN LOTS, BLOCKS AND ROADS TO BE REMOVED, UNLESS OTHERWISE NOTED.
4. PERMISSION REQUIRED FOR WORK ON ADJACENT LANDS.
5. FOR WATERMAIN STUBS, 2.4m MIN. COVER TO BE PROVIDED.
6. ANY DISTURBED MATERIAL ENCOUNTERED BELOW THE SUBGRADE LEVEL WITHIN A BUILDING FOOTPRINT TO BE SUB-EXCAVATED AND BACKFILLED WITH COMPACTED ENGINEERED FILL AS PER GEOTECHNICAL ENGINEERS RECOMMENDATION.

CONTRACTOR TO LOCATE EXISTING SERVICING INFRASTRUCTURE AND REMOVE OR REPLACE PER THIS DRAWING AND DWG. 3 AND 4.

ALL EXISTING SANITARY MANHOLES TO REMAIN AND BE REUSED AS NECESSARY.



*Allison Hamlin*  
**ALLISON HAMLIN**  
 MANAGER, DEVELOPMENT REVIEW ALL WARDS  
 PLANNING, DEVELOPMENT & BUILDING SERVICES  
 DEPARTMENT, CITY OF OTTAWA



**APPROVED**  
 By Allison Hamlin at 3:33 pm, Mar 06, 2026

**TOPOGRAPHIC INFORMATION**  
 TOPOGRAPHIC INFORMATION PROVIDED BY CITY OF OTTAWA, PROJECT 40 BEECHCLIFFE STREET, SURVEY DATED JANUARY 2025. ADDITIONAL TOPOGRAPHIC INFORMATION PROVIDED BY AOV LTD., PROJECT No. 25159-25, SURVEY DATED MAY 2025 AND JUNE 2025.

**LEGAL INFORMATION**  
 REGISTERED PLAN PLAN PROVIDED BY AOV LTD., PROJECT No. 25159-25, RECEIVED ON MAY 14, 2025.

**ELEVATION NOTE**  
 ELEVATIONS SHOWN ON THIS PLAN ARE GEODETIC AND ARE REFERRED TO THE CGVD28 GEODETIC DATUM. SITE BENCH MARK ON TOP OF 4" SPINDLE FRONTING CIVIC ADDRESS 33 BEECHCLIFFE STREET. ELEVATION=88.966m

No.	BY	DATE	DESCRIPTION
6	W.L.	26-03-05	UPDATE FOR SPA
5	W.L.	26-02-17	4th SUBMISSION
4	W.L.	25-09-15	3rd SUBMISSION
3	W.L.	25-08-01	2nd SUBMISSION
2	W.L.	25-07-15	ISSUED FOR TENDER
1	W.L.	25-06-20	1st SUBMISSION

**CITY OF OTTAWA**

PROJECT No. 24-1416

**W. LIU**  
 100167932  
 26-03-05  
 PROVINCE OF ONTARIO

TOP OF WATERMAIN	SANITARY INVERT	STORM INVERT	PROPOSED GRADES	CENTERLINE CHAINAGE
~86.223 86.250	EX. 2500 PVC SAN 52.5 @ 0.30% SDR-35 (TO BE REMOVED AND REPLACED)	EX. 5250 CONC STM 59.5 @ 3.51%	86.140 86.100 86.012 85.920 86.218 85.920 85.842 85.748 85.680 85.660 85.510 85.470 85.570 85.660 85.762 85.908 86.246 85.923	0+000.000- 0+005.357 0+008.650 0+018.196 0+020.000 0+040.000- 0+051.892 0+051.127 0+059.000 0+063.544 0+062.747 0+070.864 0+077.065 0+086.073 0+100.000- 0+108.248 0+120.000- 0+130.507 0+133.346 0+135.272 0+140.000- 0+153.332 0+160.000- 0+176.043 0+180.000- 0+198.250 0+200.000- 0+203.016 0+204.772 0+220.000- 0+221.697 0+240.000- 0+246.654 0+256.296 0+257.664 0+258.594 0+259.594 0+267.808 0+270.572
	2500 PVC SAN 65.5 @ 0.38% SDR-35 (TO BE REMOVED AND REPLACED)	EX. 5250 CONC STM 71.0 @ 0.54%	85.680 85.660 85.510 85.470 85.570 85.660 85.762 85.908 86.246 85.923	0+130.507 0+133.346 0+135.272 0+140.000- 0+153.332 0+160.000- 0+176.043 0+180.000- 0+198.250 0+200.000- 0+203.016 0+204.772 0+220.000- 0+221.697 0+240.000- 0+246.654 0+256.296 0+257.664 0+258.594 0+259.594 0+267.808 0+270.572
	2500 PVC SAN 69.5 @ 0.39% SDR-35 (TO BE REMOVED AND REPLACED)	EX. 4508 CONC STM 69.5 @ 0.79%	85.570 85.660 85.762 85.908 86.246 85.923	0+198.250 0+200.000- 0+203.016 0+204.772 0+220.000- 0+221.697 0+240.000- 0+246.654 0+256.296 0+257.664 0+258.594 0+259.594 0+267.808 0+270.572
	2500 PVC SAN 65.5 @ 0.34% SDR-35 (TO BE REMOVED AND REPLACED)	EX. 4508 CONC STM 64.0 @ 0.48%	85.908 86.246 85.923	0+240.000- 0+246.654 0+256.296 0+257.664 0+258.594 0+259.594 0+267.808 0+270.572

**HABITAT FOR HUMANITY**

**40 BEECHCLIFFE STREET**

**DSEL**

**BEECHCLIFFE ST & FAIR OAKS CRES**  
 STA. 0+000.000 TO STA. 0+291.090

DRAWN BY: A.S.	CHECKED BY: W.L.	SHEET NO.
DESIGNED BY: A.S.	CHECKED BY:	5 OF 12
SCALE: H=1:500/V=1:50	DATE: JUNE 2025	

120 Iber Road, Unit 103  
 Stittsville, ON K2S 1E9  
 Tel: (613) 836-0856  
 Fax: (613) 836-7183  
 www.DSEL.ca

CITY PLAN No. 19322  
 CITY FILE No. \_D07-12-25-0091