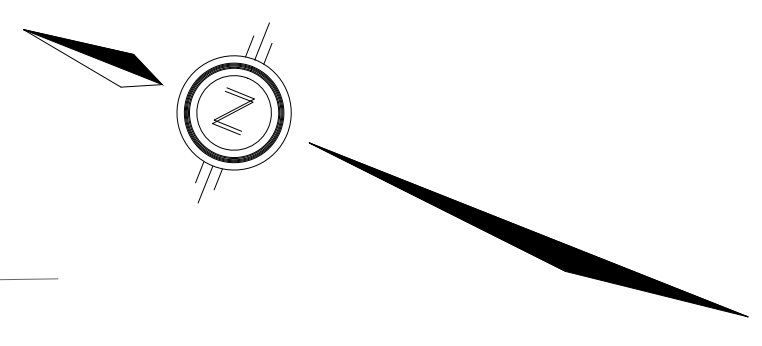


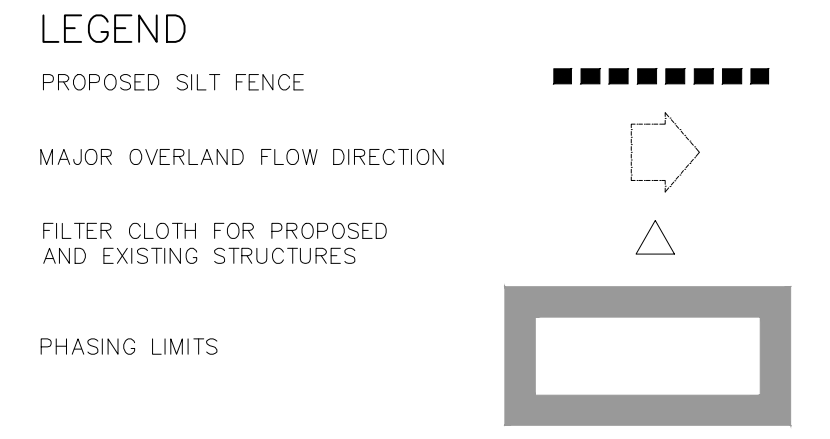
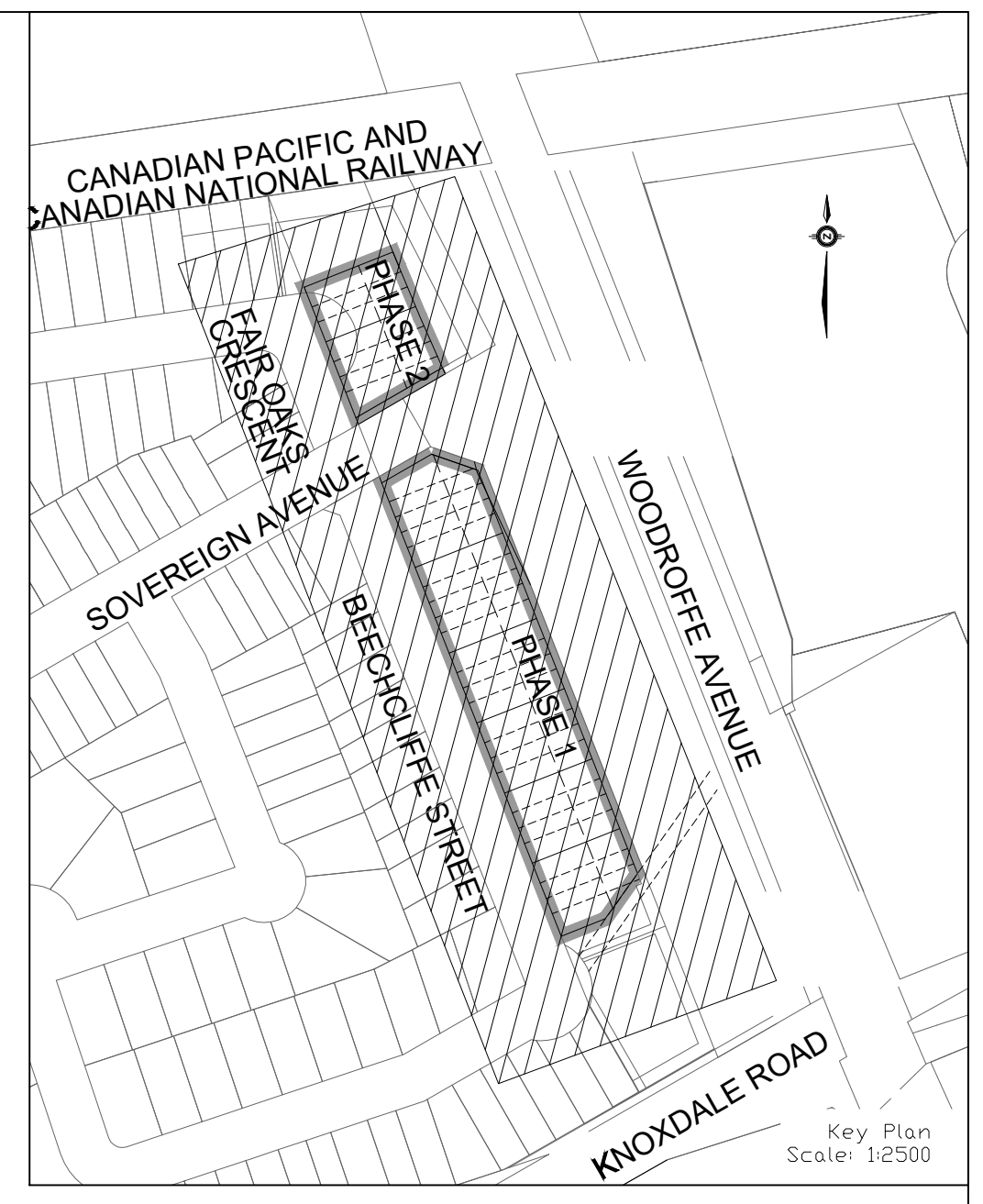
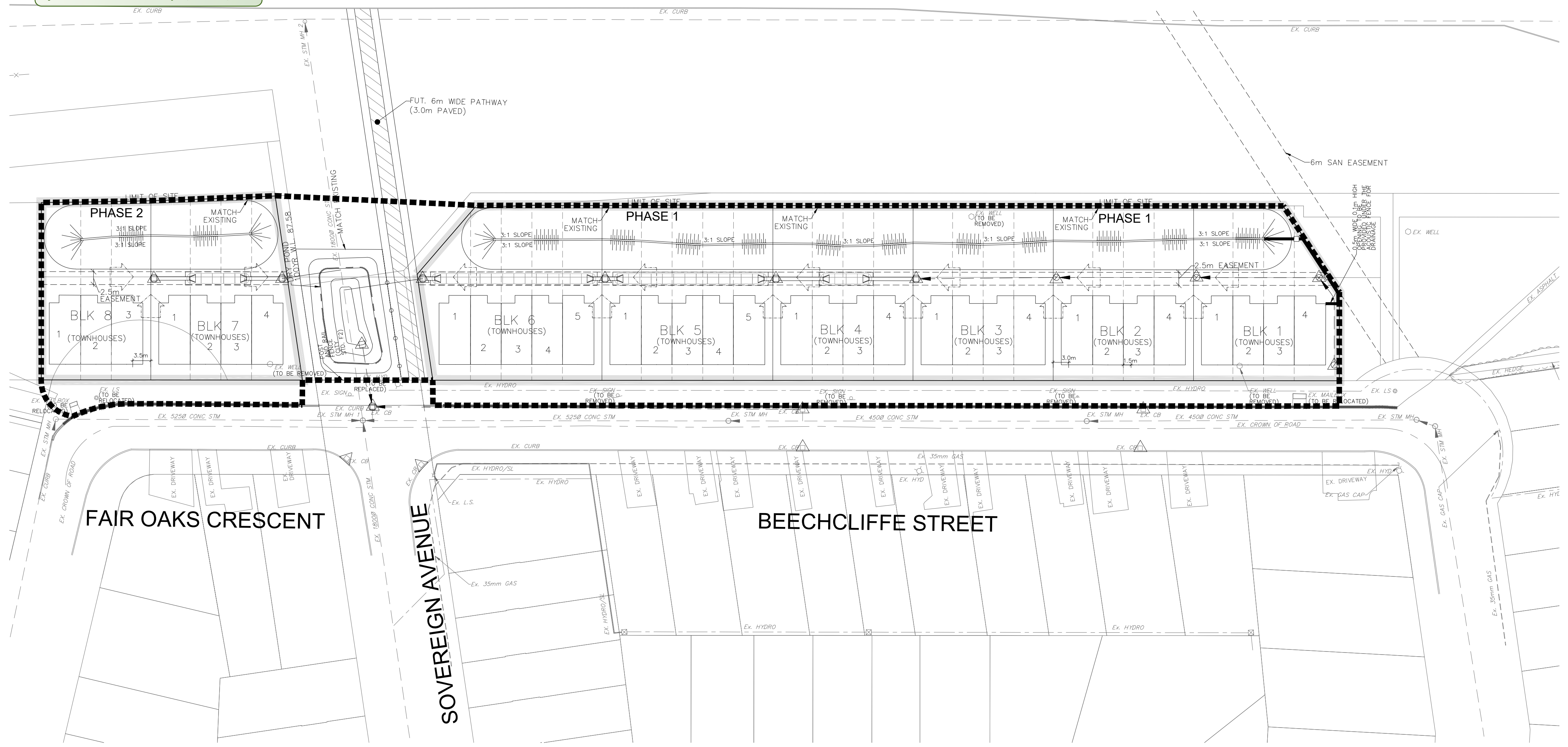
Allison Hamlin

ALLISON HAMLIN
 MANAGER, DEVELOPMENT REVIEW ALL WARDS
 PLANNING, DEVELOPMENT & BUILDING SERVICES
 DEPARTMENT, CITY OF OTTAWA

APPROVED
 By Allison Hamlin at 3:34 pm, Mar 06, 2026



WOODROFFE AVENUE

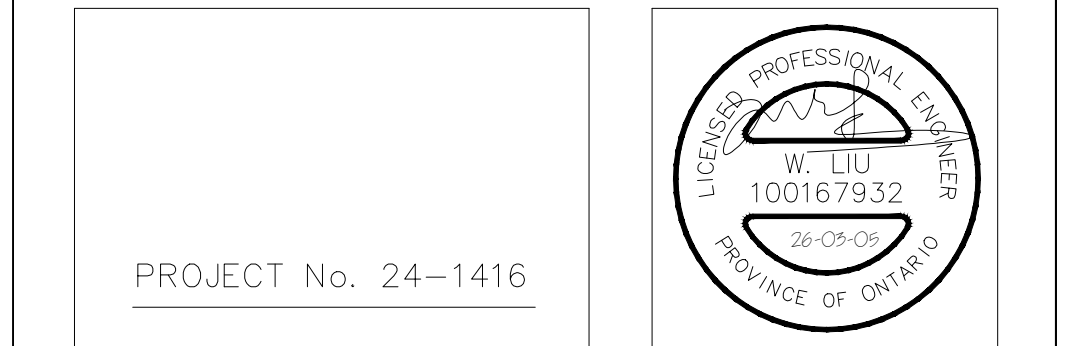


TOPOGRAPHIC INFORMATION
 TOPOGRAPHIC INFORMATION PROVIDED BY CITY OF OTTAWA, PROJECT 40 BEECHCLIFFE STREET, SURVEY DATED JANUARY 2025. ADDITIONAL TOPOGRAPHIC INFORMATION PROVIDED BY AOV LTD., PROJECT No. 25159-25, SURVEY DATED MAY 2025 AND JUNE 2025.

LEGAL INFORMATION
 REGISTERED PLAN PROVIDED BY AOV LTD., PROJECT No. 25159-25, RECEIVED ON MAY 14, 2025.

ELEVATION NOTE
 ELEVATIONS SHOWN ON THIS PLAN ARE GEODETIC AND ARE REFERRED TO THE CGVD28 GEODETIC DATUM. SITE BENCH MARK ON TOP OF F#1 SPINDLE FRONTING CIVIC ADDRESS 33 BEECHCLIFFE STREET. ELEVATION=88.966m.

No.	BY	DATE	DESCRIPTION
6	W.L.	26-03-05	UPDATE FOR SPA
5	W.L.	26-02-17	4th SUBMISSION
4	W.L.	25-09-15	3rd SUBMISSION
3	W.L.	25-08-01	2nd SUBMISSION
2	W.L.	25-07-15	ISSUED FOR TENDER
1	W.L.	25-06-20	1st SUBMISSION



HABITAT FOR HUMANITY 40 BEECHCLIFFE STREET



EROSION AND SEDIMENT CONTROL PLAN STAGE 2

DRAWN BY: A.S.	CHECKED BY: W.L.	SHEET NO.
DESIGNED BY: A.S.	CHECKED BY:	12 OF 12
SCALE: 1:500	DATE: JUNE 2025	

THE SILTATION CONTROL PLAN IS INTENDED TO ASSIST THE CONTRACTOR IN THE LAYOUT AND CONSTRUCTION OF THE SILTATION CONTROL FEATURES ONLY. THIS DRAWING SHALL NOT BE USED FOR CONSTRUCTION OF SITE SERVICES.

EROSION AND SEDIMENT CONTROL NOTES:

PRIOR TO TOPSOIL STRIPPING, EARTHWORKS, OR UNDERGROUND CONSTRUCTION, EROSION AND SEDIMENT CONTROLS SHALL BE IMPLEMENTED TO THE SATISFACTION OF THE AUTHORITY HAVING JURISDICTION.

SEDIMENT CONTROL FENCE SHALL BE CLEANED AND MAINTAINED IN GOOD REPAIR BY CONTRACTOR.

SEDIMENT CONTROL FENCE TO REMAIN IN PLACE UNTIL THE WORKING AREA HAS BEEN STABILIZED AND REVEGETATED.

ACCUMULATED SEDIMENT TO BE REMOVED OFF SITE PRIOR TO THE REMOVAL OF SEDIMENT CONTROL FENCE.

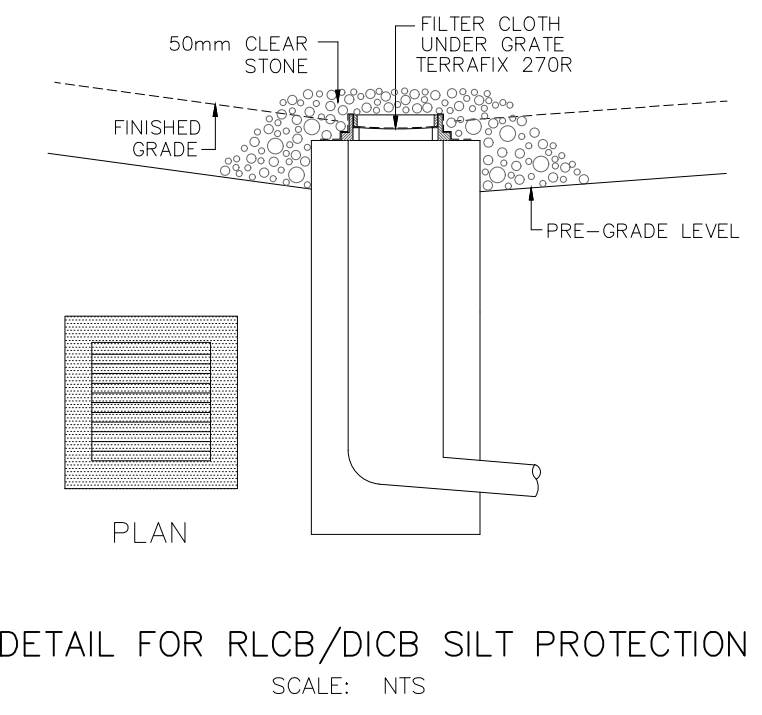
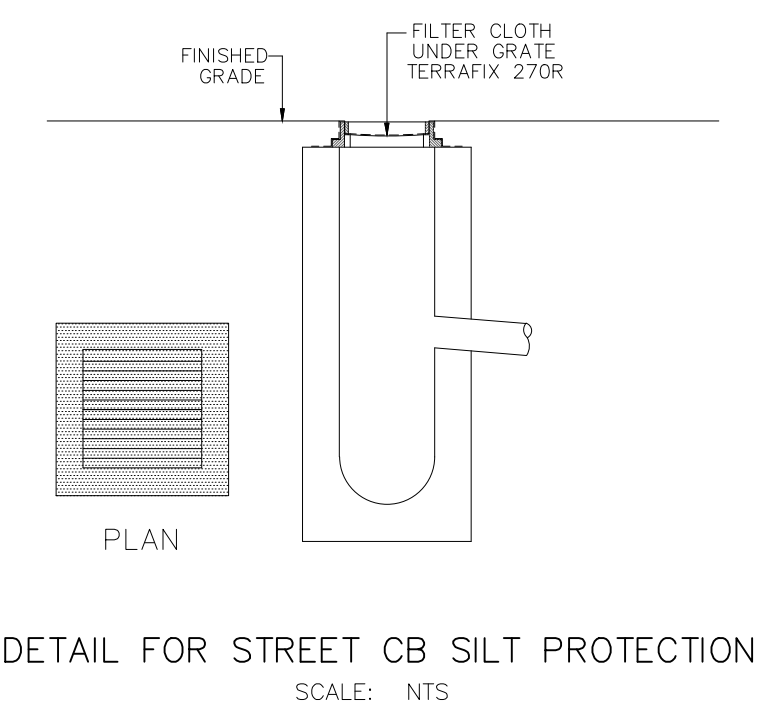
EROSION AND SEDIMENT CONTROL MEASURES MAY BE MODIFIED IN THE FIELD AT THE DISCRETION OF THE CITY OF OTTAWA SITE INSPECTOR OR CONSERVATION AUTHORITY PERSONNEL.

CONTRACTOR MUST USE BEST MANAGEMENT PRACTICES (BMPs) FOR EROSION AND SEDIMENT CONTROL.

MONITORING OF SEDIMENT AND EROSION CONTROLS
 MONITORING AND REPORTING TO BE COMPLETED IN ACCORDANCE WITH THE MINISTRY OF THE ENVIRONMENT, CONSERVATION AND PARKS (MECP) AND RIDEAU VALLEY CONSERVATION AUTHORITY (RVCA) APPROVALS.

MAINTENANCE PROGRAM
 ALL DAMAGED ESC MEASURES SHOULD BE REPAIRED AND/OR REPLACEMENT WITHIN 48 HOURS OF THE INSPECTION.
 THE ENVIRONMENTAL MONITOR IS REQUIRED TO SUBMIT UPDATES TO THE TOWN/REGIONAL CONSERVATION AUTHORITY BY EMAIL IN A TIMELY MANNER.

SEDIMENT SHOULD BE REMOVED FROM THE SEDIMENT CONTROL FENCING ONCE SEDIMENT HAS ACCUMULATED TO A LEVEL OF ONE-THIRD THE HEIGHT OF FENCING OR TO A HEIGHT OF 30 cm. ANY AMOUNT OF ACCUMULATED SEDIMENT SHOULD BE REMOVED PRIOR TO THE REMOVAL OF THE CONTROL MEASURES.



CITY PLAN No. 19322
 CITY FILE No. D07-12-25-0091