

**EROSION AND SEDIMENT CONTROL NOTES:**

- PRIOR TO TOPSOIL STRIPPING, EARTHWORKS, OR UNDERGROUND CONSTRUCTION, EROSION AND SEDIMENT CONTROLS SHALL BE IMPLEMENTED TO THE SATISFACTION OF THE AUTHORITY HAVING JURISDICTION.
- SEDIMENT CONTROL FENCE SHALL BE CLEANED AND MAINTAINED IN GOOD REPAIR BY CONTRACTOR.
- SEDIMENT CONTROL FENCE TO REMAIN IN PLACE UNTIL THE WORKING AREA HAS BEEN STABILIZED AND REVEGETATED.
- ACCUMULATED SEDIMENT TO BE REMOVED OFF SITE PRIOR TO THE REMOVAL OF SEDIMENT CONTROL FENCE.
- EROSION AND SEDIMENT CONTROL MEASURES MAY BE MODIFIED IN THE FIELD AT THE DISCRETION OF THE CITY OF OTTAWA SITE INSPECTOR OR CONSERVATION AUTHORITY PERSONNEL.
- CONTRACTOR MUST USE BEST MANAGEMENT PRACTICES (BMPs) FOR EROSION AND SEDIMENT CONTROL.
- THE SILTATION CONTROL PLAN IS INTENDED TO ASSIST THE CONTRACTOR IN THE LAYOUT AND CONSTRUCTION OF THE SILTATION CONTROL FEATURES ONLY. THIS DRAWING SHALL NOT BE USED FOR CONSTRUCTION OF SITE SERVICES.
- EROSION AND SEDIMENT CONTROL INSPECTION AND MONITORING SHALL BE CARRIED OUT BY THE CONTRACTOR USING THE GUIDELINES OUTLINED IN CSA W208-20 EROSION AND SEDIMENT CONTROL INSTALLATION AND MAINTENANCE.
- INSTALLATION AND MAINTENANCE OF THE ESC MEASURES SPECIFIED IN THIS PLAN SHALL BE CARRIED OUT USING THE GUIDELINES OUTLINED IN CSA W208-20 EROSION AND SEDIMENT CONTROL INSTALLATION AND MAINTENANCE.
- INSPECTION OF THE ESC MEASURES NEED TO BE PERFORMED BY A PERSONS WHO HAVE OBTAINED THE RELEVANT EDUCATION AND TRAINING AND HAVE DEMONSTRATED EXPERIENCE AND EXPERTISE IN THE AREAS RELATING TO THE WORK REQUIRED TO BE CARRIED OUT.

**LEGEND**

- PROPOSED SILT FENCE (dashed line)
- MAJOR OVERLAND FLOW DIRECTION (arrow)
- EXISTING CONTOUR ELEVATION (201.00)
- PROPOSED ROCK FLOW CHECK DAM (OPSD 219.210) (stone symbol)
- SWALE (dashed line with 'SW')
- PROPOSED SWALE CENTERLINE GRADE (100.45)

**TOPOGRAPHIC INFORMATION**

TOPOGRAPHIC INFORMATION PROVIDED BY ANNIS, O'SULLIVAN, VOLLEBEKK LTD. PROJECT NO. 21942-22 DATED SEPTEMBER 1, 2022

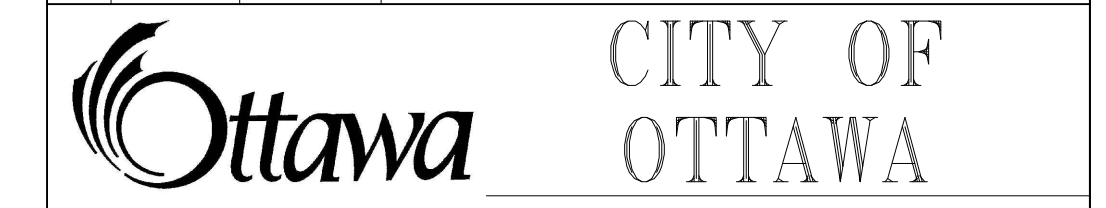
**SITE PLAN INFORMATION**

SITE PLAN PROVIDED BY SRM ARCHITECTS, DATED ON OCTOBER 20, 2025.

**ELEVATION NOTE**

ELEVATIONS ARE GEODETIC AND ARE REFERRED TO THE CGVD28 GEODETIC DATUM, DERIVED FROM VERTICAL CONTROL MONUMENT NO. BMB8U502. ELEVATION = 106.039 m

No.	BY	DATE	DESCRIPTION
3	S.L.M.	2025-12-19	3rd SUBMISSION
2	S.L.M.	2025-10-24	2nd SUBMISSION
1	S.L.M.	2025-06-20	1st SUBMISSION



PROJECT No. 1295\_Block13

Minto Group  
ABBOTT'S RUN  
BLOCK 13



**EROSION AND SEDIMENT CONTROL PLAN STAGE 1**

DRAWN BY: E.D.	CHECKED BY: S.L.M.	SHEET NO. 18 OF 19
DESIGNED BY: E.D.	CHECKED BY: S.L.M.	
SCALE: 1:500	DATE: JUNE 2025	

**SPILLS CONTROL NOTES**

- ALL CONSTRUCTION EQUIPMENT SHALL BE REFUELED, MAINTAINED AND STORED NO LESS THAN 30 METERS FROM THE WATERCOURSES, STREAMS, CREEKS, WOODLOTS AND ANY ENVIRONMENTALLY SENSITIVE AREAS, OR AS OTHERWISE SPECIFIED.
- THE CONTRACTOR MUST IMPLEMENT ALL NECESSARY MEASURES IN ORDER TO PREVENT LEAKS, DISCHARGES OR SPILLS OF POLLUTANTS, DELETERIOUS MATERIALS, OR OTHER SUCH MATERIALS OR SUBSTANCES WHICH WOULD OR COULD CAUSE AN ADVERSE IMPACT TO THE NATURAL ENVIRONMENT.
- IN THE EVENT OF A LEAK, DISCHARGE OR SPILL OF A POLLUTANT, DELETERIOUS MATERIAL OR OTHER SUCH MATERIAL OR SUBSTANCE WHICH WOULD OR COULD CAUSE AN ADVERSE IMPACT TO THE NATURAL ENVIRONMENT, THE CONTRACTOR SHALL:
  - IMMEDIATELY NOTIFY THE APPROPRIATE FEDERAL, PROVINCIAL AND LOCAL GOVERNMENT MINISTRIES, DEPARTMENTS, AGENCIES AND AUTHORITIES OF THE INCIDENT IN ACCORDANCE WITH ALL CURRENT LAWS, LEGISLATION, ACTS, BY-LAWS, PERMITS, APPROVALS, ETC.
  - TAKE IMMEDIATE MEASURES TO CONTAIN THE MATERIAL OR SUBSTANCE, AND TO TAKE SUCH MEASURES AS THEY DEEM APPROPRIATE TO MITIGATE AGAINST THE ANY ADVERSE IMPACTS TO THE NATURAL ENVIRONMENT.
  - THE CONTRACT SHALL RESTORE THE AFFECTED AREA TO ORIGINAL CONDITION OR BETTER, ALL TO THE SATISFACTION OF THE AUTHORITIES HAVING JURISDICTION.

**MONITORING OF SEDIMENT AND EROSION CONTROLS**

MONITORING AND REPORTING TO BE COMPLETED IN ACCORDANCE WITH THE MINISTRY OF THE ENVIRONMENT AND CLIMATE CHANGE (MOECC) AND IDEAU VALLEY CONSERVATION AUTHORITY (RVCA) APPROVALS.

**MAINTENANCE PROGRAM**

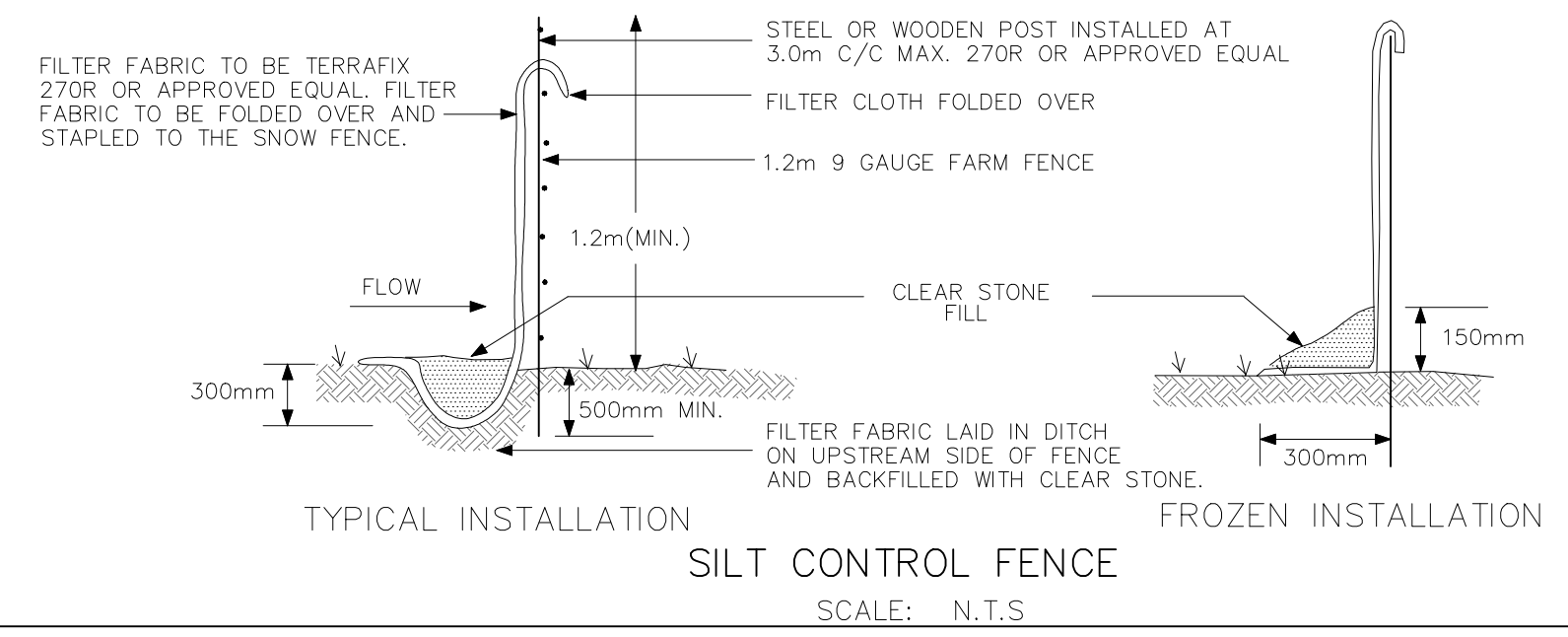
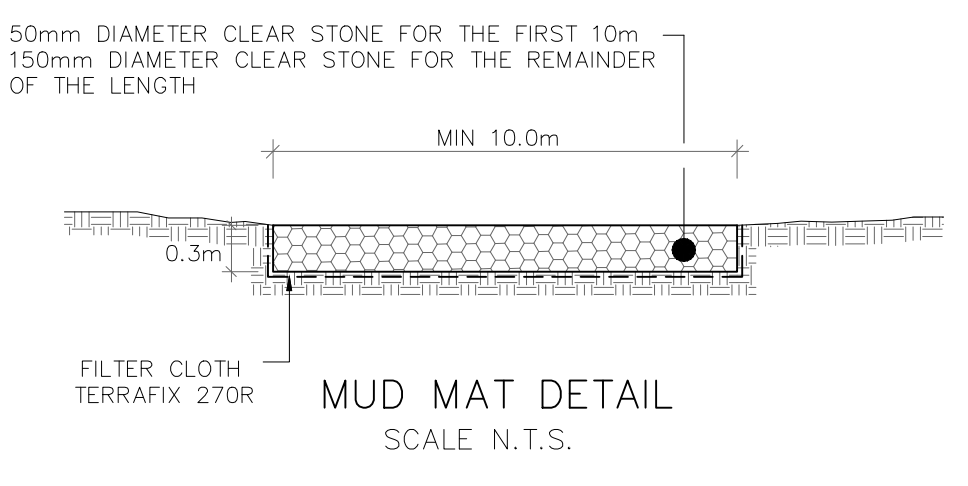
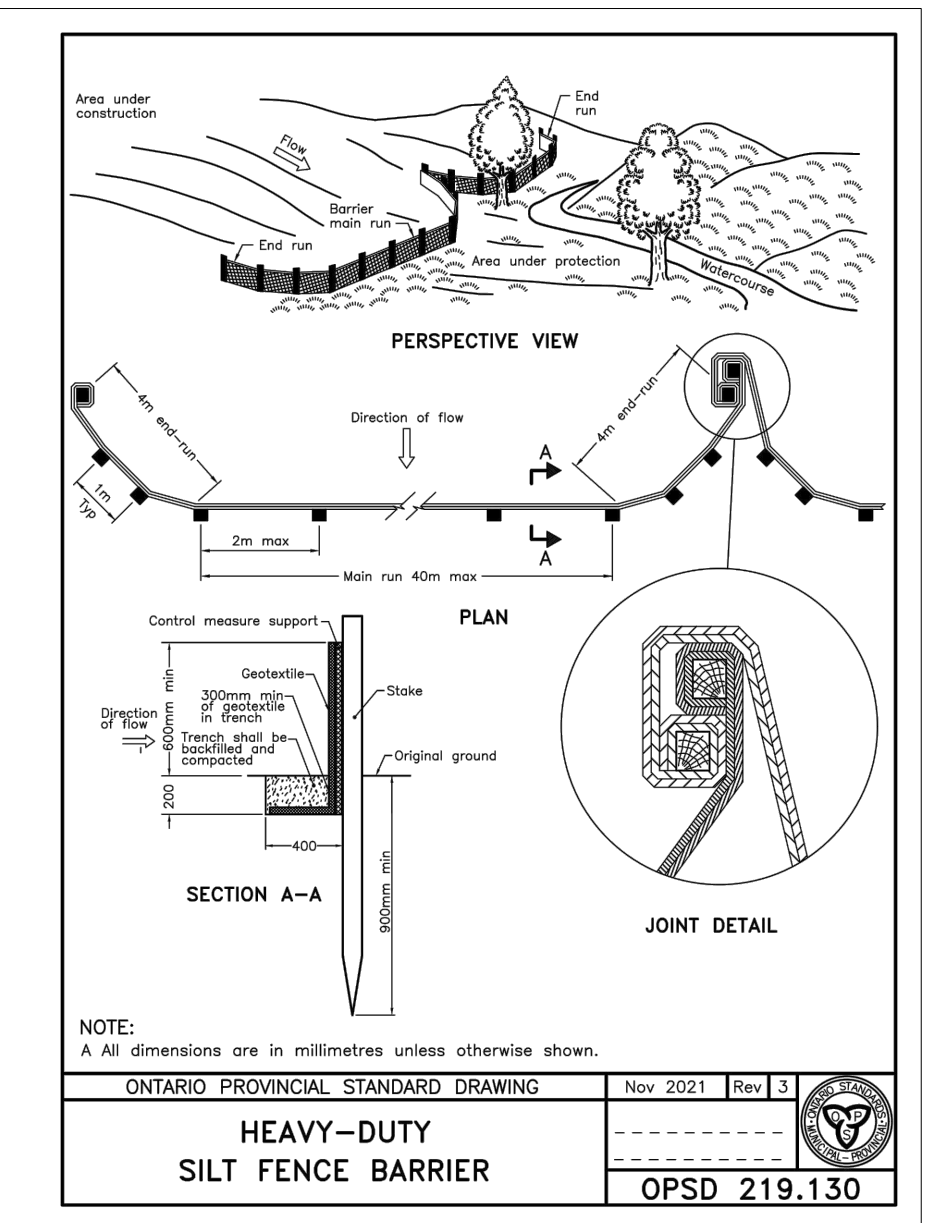
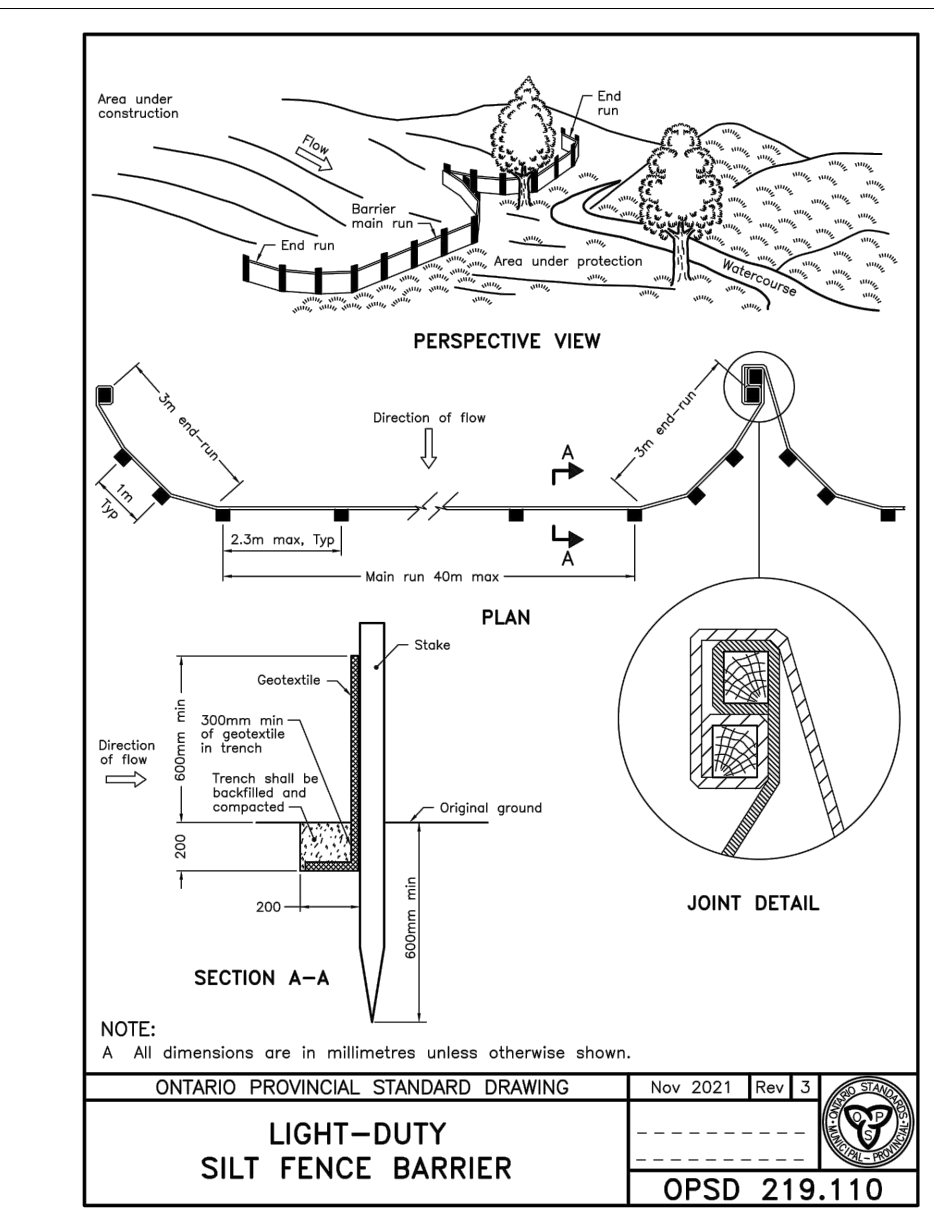
ALL DAMAGED ESC MEASURES SHOULD BE REPAIRED AND/OR REPLACEMENT WITHIN 48 HOURS OF THE INSPECTION.

THE ENVIRONMENTAL MONITOR IS REQUIRED TO SUBMIT UPDATES TO THE TOWN/REGION/CONSERVATION AUTHORITY BY EMAIL IN A TIMELY MANNER.

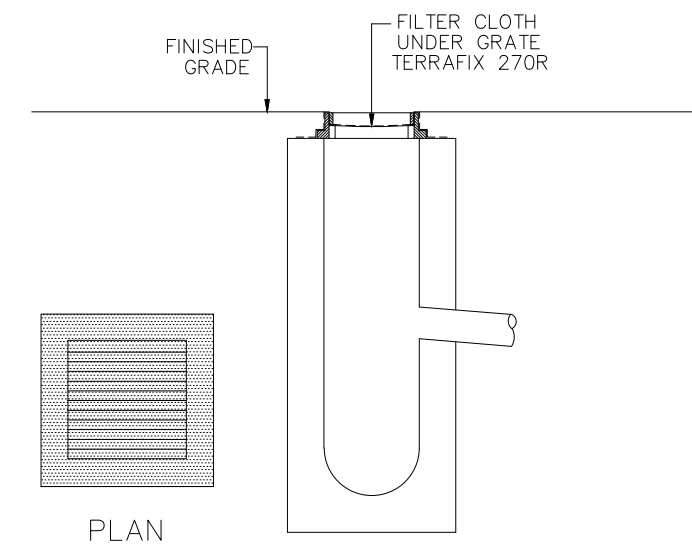
SEDIMENT SHOULD BE REMOVED FROM THE SEDIMENT CONTROL FENCING ONCE SEDIMENT HAS ACCUMULATED TO A LEVEL OF ONE-THIRD THE HEIGHT OF FENCING OR TO A HEIGHT OF 30 cm. ANY AMOUNT OF ACCUMULATED SEDIMENT SHOULD BE REMOVED PRIOR TO THE REMOVAL OF THE CONTROL MEASURES.

**SEQUENCE OF ACTIVITIES**

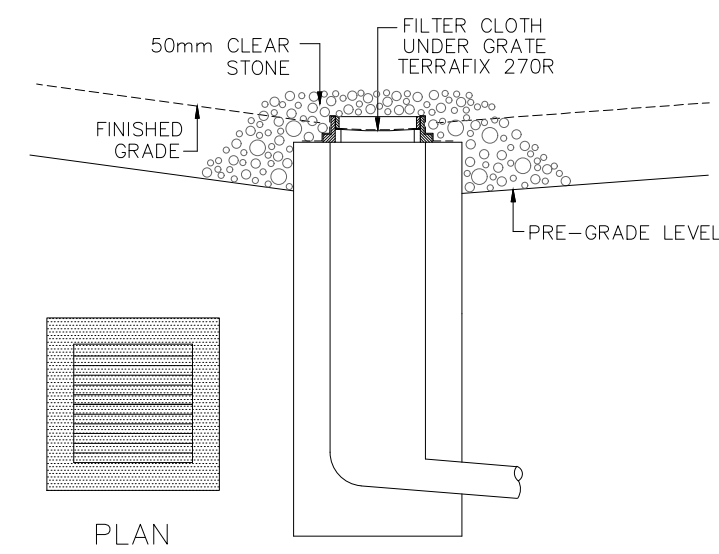
- THE EROSION AND SEDIMENT CONTROL MEASURES MUST BE INSTALLED IN ACCORDANCE WITH THE FOLLOWING SEQUENCE:
  - INSTALLATION OF THE SEDIMENT CONTROL FENCING WHERE INDICATED.
  - REMOVAL OF SITE VEGETATION IN ACCORDANCE WITH ALL APPLICABLE BY-LAWS.
  - CONSTRUCTION OF THE EROSION AND SEDIMENT CONTROL POND IN ACCORDANCE WITH THE DESIGN DRAWINGS.
  - REGULAR MONITORING OF THE SEDIMENT CONTROL FENCES BY THE CONTRACTOR TO VERIFY THAT THE FENCES ARE FUNCTIONING AS INTENDED.
  - REGULAR MONITORING OF THE SEDIMENT BASIN TO VERIFY THAT THE BASIN IS FUNCTIONING AS INTENDED.
  - REMOVAL OF THE EROSION AND SEDIMENT CONTROL DEVICES ONCE THE SITE HAS BEEN STABILIZED.



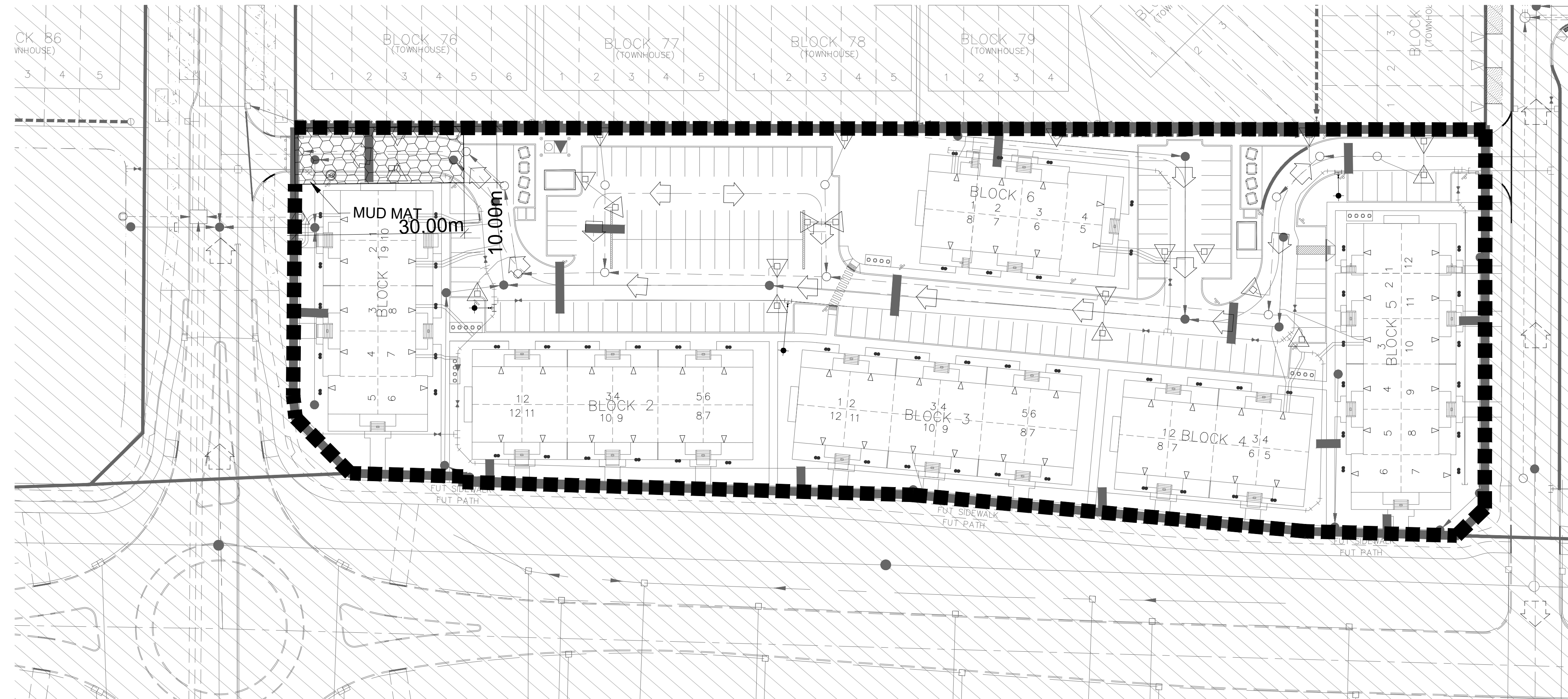
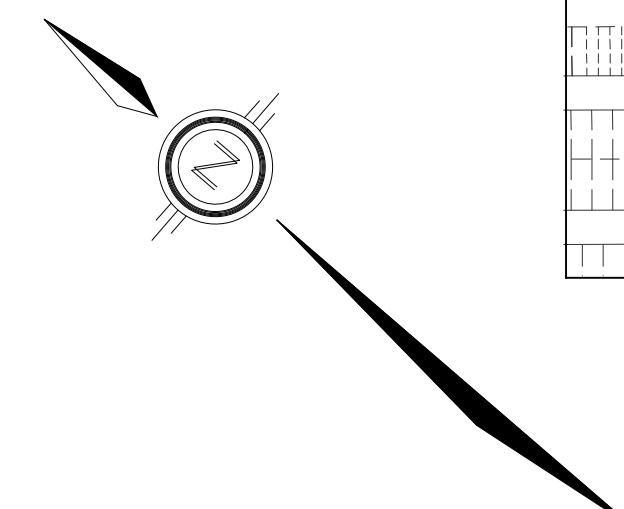
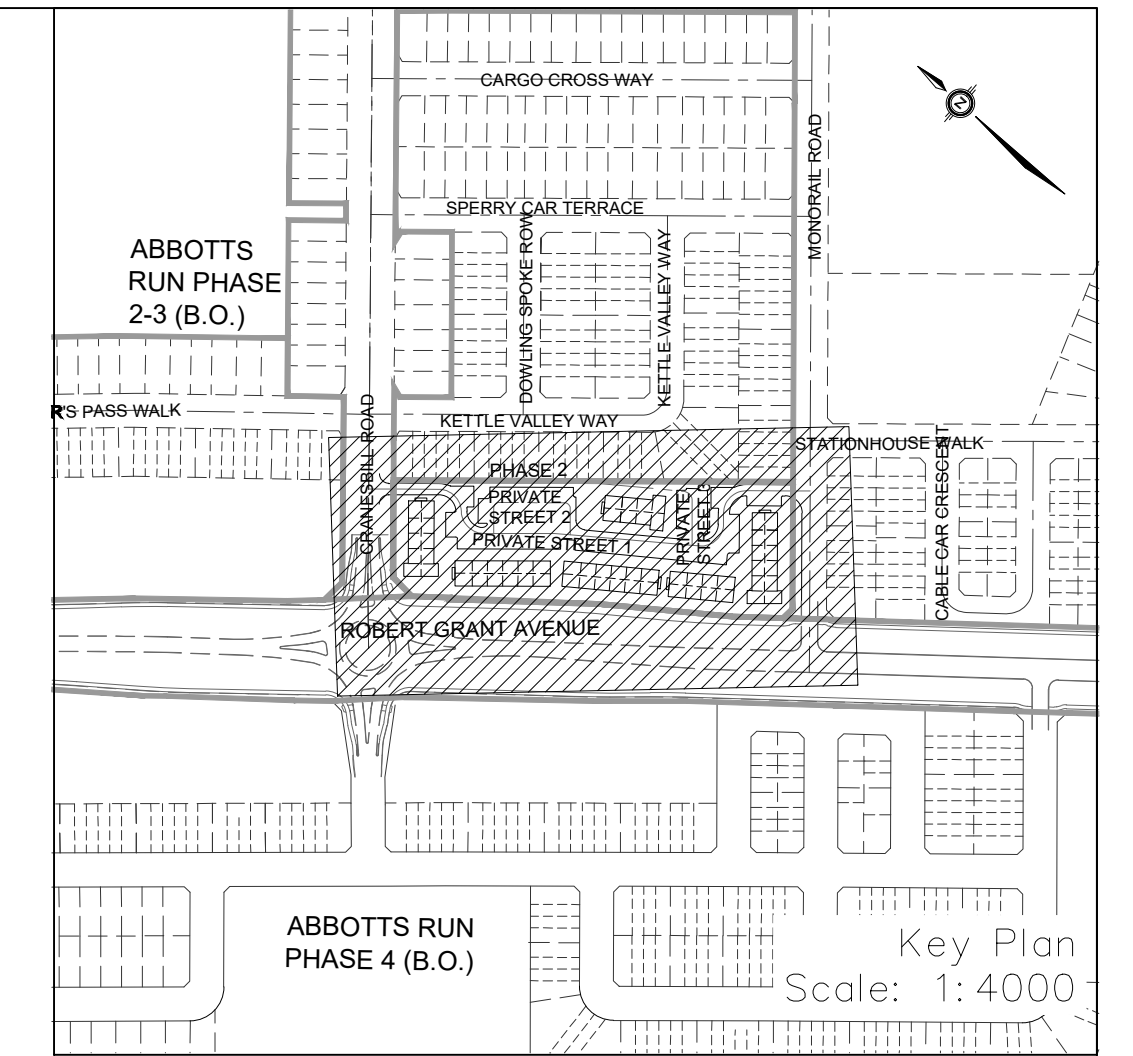
CITY FILE No. D07-12-25-0089 CITY PLAN No. 19356



DETAIL FOR STREET CB SILT PROTECTION  
SCALE: NTS



DETAIL FOR RLCE/DICB SILT PROTECTION  
SCALE: NTS



LEGEND

- PROPOSED SILT FENCE
- MAJOR OVERLAND FLOW DIRECTION
- STORM DRAIN INLET PROTECTION

TOPOGRAPHIC INFORMATION  
TOPOGRAPHIC INFORMATION PROVIDED BY ANNIS, O'SULLIVAN, VOLLEBEKK LTD.  
PROJECT NO. 21942-22 DATED SEPTEMBER 1, 2022

SITE PLAN INFORMATION  
SITE PLAN PROVIDED BY SRN ARCHITECTS, DATED ON OCTOBER 20, 2025.

ELEVATION NOTE  
ELEVATIONS ARE GEODETIC AND ARE REFERRED TO THE CGVD28 GEODETIC DATUM, DERIVED FROM VERTICAL CONTROL MONUMENT NO. BM88U502.  
ELEVATION = 106.039 m

3	S.L.M.	2025-12-19	3rd SUBMISSION
2	S.L.M.	2025-10-24	2nd SUBMISSION
1	S.L.M.	2025-06-20	1st SUBMISSION
No.	BY	DATE	DESCRIPTION



PROJECT No. 1295\_Block13

EROSION AND SEDIMENT CONTROL NOTES:

PRIOR TO TOPSOIL STRIPPING, EARTHWORKS, OR UNDERGROUND CONSTRUCTION, EROSION AND SEDIMENT CONTROLS SHALL BE IMPLEMENTED TO THE SATISFACTION OF THE AUTHORITY HAVING JURISDICTION.

SEDIMENT CONTROL FENCE SHALL BE CLEANED AND MAINTAINED IN GOOD REPAIR BY CONTRACTOR.

SEDIMENT CONTROL FENCE TO REMAIN IN PLACE UNTIL THE WORKING AREA HAS BEEN STABILIZED AND REVEGETATED.

ACCUMULATED SEDIMENT TO BE REMOVED OFF SITE PRIOR TO THE REMOVAL OF SEDIMENT CONTROL FENCE.

EROSION AND SEDIMENT CONTROL MEASURES MAY BE MODIFIED IN THE FIELD AT THE DISCRETION OF THE CITY OF OTTAWA SITE INSPECTOR OR CONSERVATION AUTHORITY PERSONNEL.

CONTRACTOR MUST USE BEST MANAGEMENT PRACTICES (BMPs) FOR EROSION AND SEDIMENT CONTROL.

THE SILTATION CONTROL PLAN IS INTENDED TO ASSIST THE CONTRACTOR IN THE LAYOUT AND CONSTRUCTION OF THE SILTATION CONTROL FEATURES ONLY. THIS DRAWING SHALL NOT BE USED FOR CONSTRUCTION OF SITE SERVICES.

EROSION AND SEDIMENT CONTROL INSPECTION AND MONITORING SHALL BE CARRIED OUT BY THE CONTRACTOR USING THE GUIDELINES OUTLINED IN CAN/CSA-W202-18.

INSTALLATION AND MAINTENANCE OF THE ESC MEASURES SPECIFIED IN THIS PLAN SHALL BE CARRIED OUT USING THE GUIDELINES OUTLINED IN CSA W208:20 EROSION AND SEDIMENT CONTROL INSTALLATION AND MAINTENANCE.

INSPECTION OF THE ESC MEASURES NEED TO BE PERFORMED BY A PERSONS WHO HAVE OBTAINED THE RELEVANT EDUCATION AND TRAINING AND HAVE DEMONSTRATED EXPERIENCE AND EXPERTISE IN THE AREAS RELATING TO THE WORK REQUIRED TO BE CARRIED OUT.

MONITORING OF SEDIMENT AND EROSION CONTROLS

MONITORING AND REPORTING TO BE COMPLETED IN ACCORDANCE WITH THE MINISTRY OF THE ENVIRONMENT, CONSERVATION, AND PARKS (MECP) AND RIDEAU VALLEY CONSERVATION AUTHORITY(RVCA) APPROVALS.

MAINTENANCE PROGRAM

ALL DAMAGED ESC MEASURES SHOULD BE REPAIRED AND/OR REPLACEMENT WITHIN 48 HOURS OF THE INSPECTION. THE ENVIRONMENTAL MONITOR IS REQUIRED TO SUBMIT UPDATES TO THE TOWN/ REGION/ CONSERVATION AUTHORITY BY EMAIL IN A TIMELY MANNER. SEDIMENT SHOULD BE REMOVED FROM THE SEDIMENT CONTROL FENCING ONCE SEDIMENT HAS ACCUMULATED TO A LEVEL OF ONE-THIRD THE HEIGHT OF FENCING OR TO A HEIGHT OF 30 cm. ANY AMOUNT OF ACCUMULATED SEDIMENT SHOULD BE REMOVED PRIOR TO THE REMOVAL OF THE CONTROL MEASURES.

Minto Group  
ABBOTT'S RUN  
BLOCK 13



EROSION AND SEDIMENT CONTROL PLAN  
STAGE 2

DRAWN BY: E.D.	CHECKED BY: S.L.M.	SHEET NO.
DESIGNED BY: E.D.	CHECKED BY: S.L.M.	19 OF 19
SCALE: 1:500	DATE: JUNE 2025	

CITY FILE No. D07-12-25-0089 CITY PLAN No. 19356