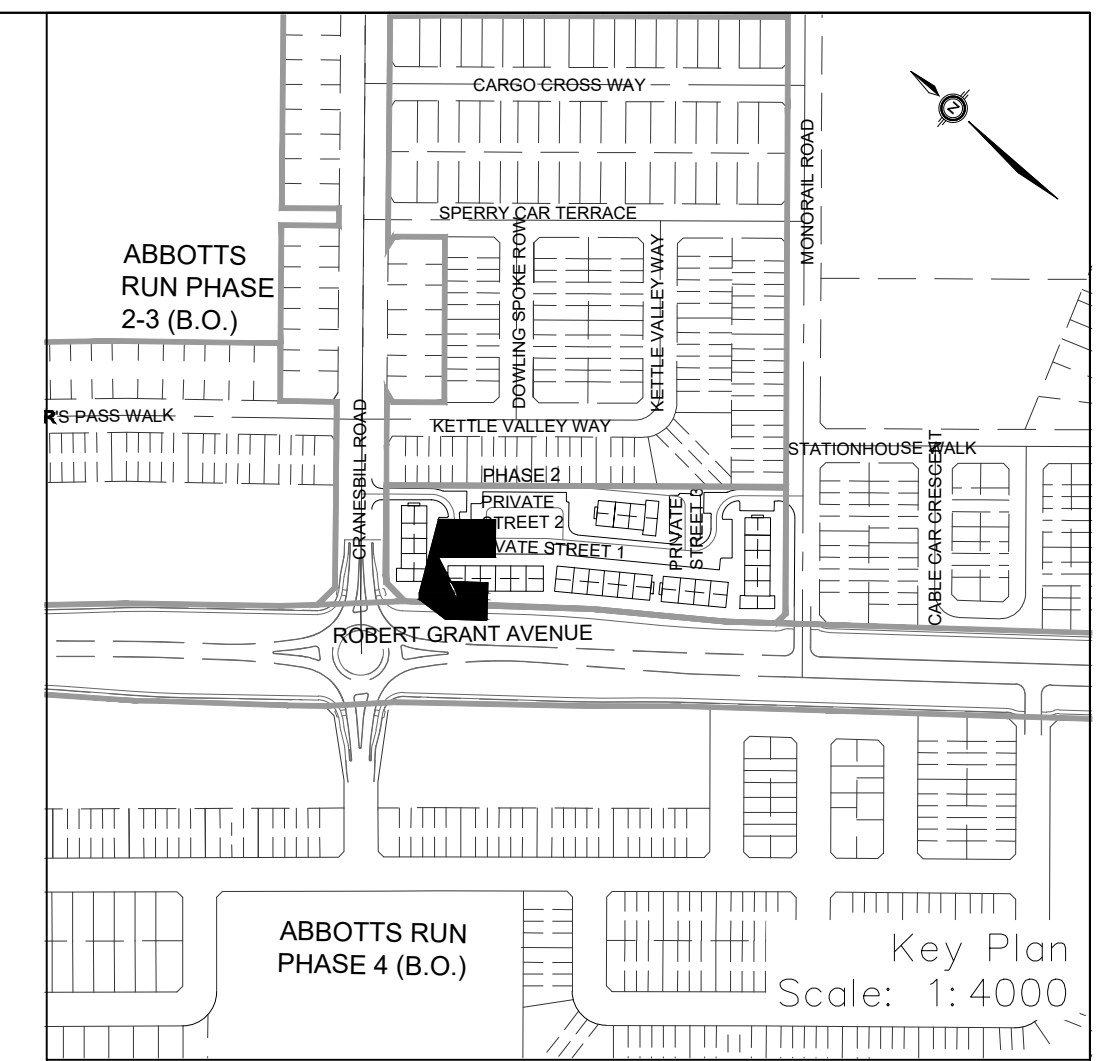
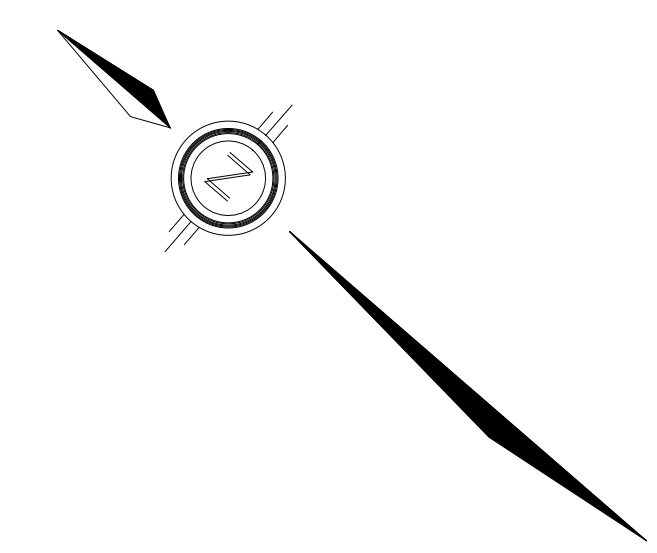
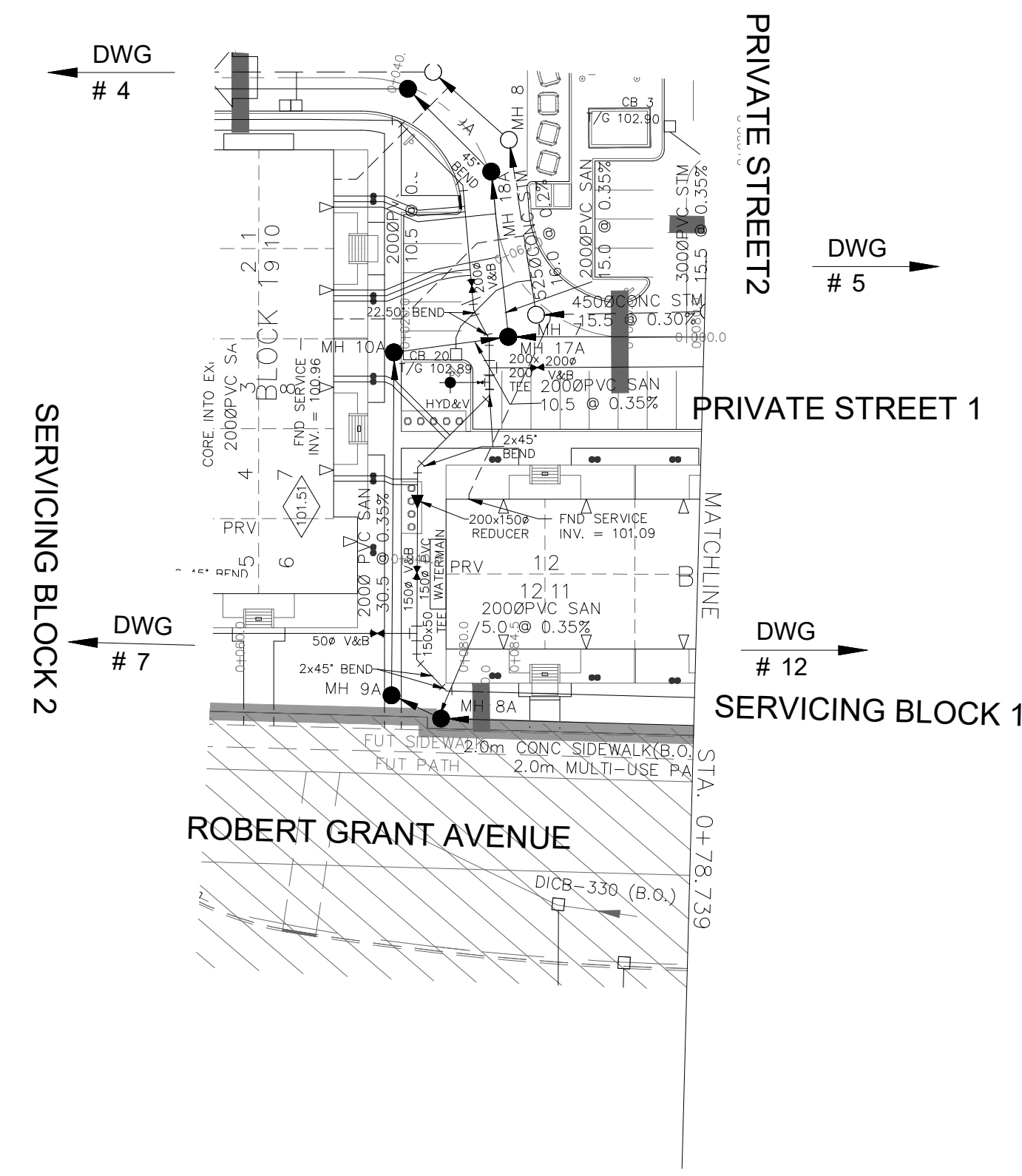


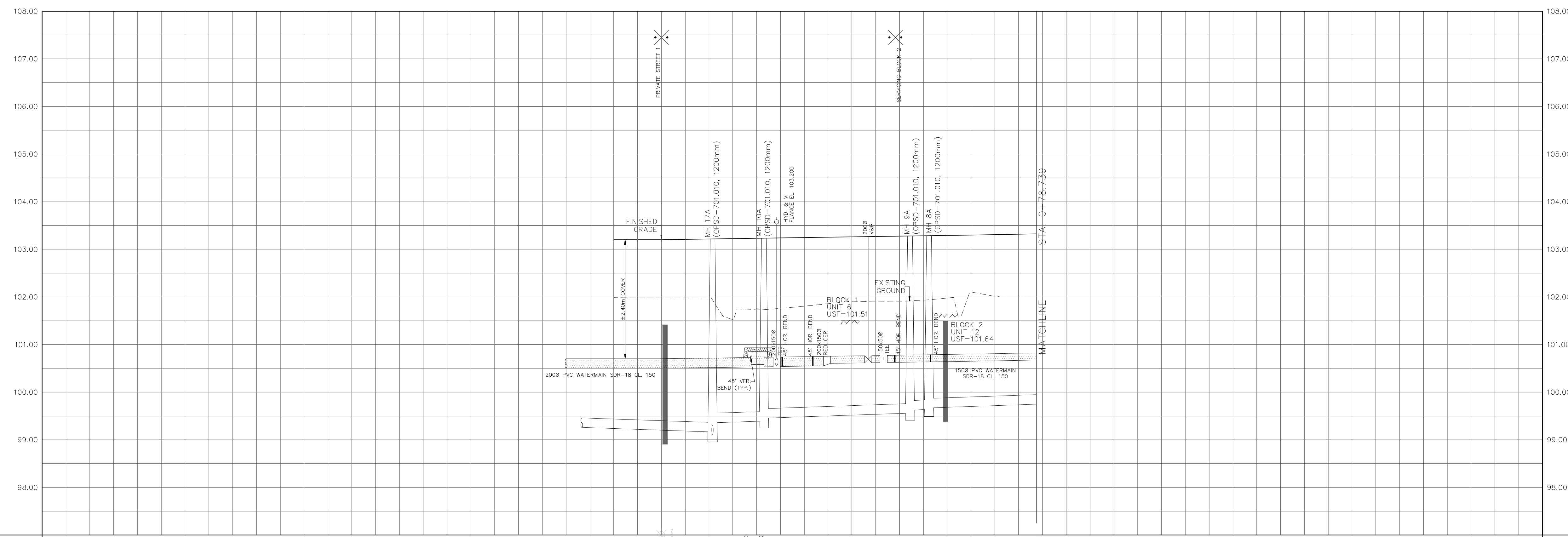
NOTES:

1. ANY DISTURBED AREA DURING CONSTRUCTION TO BE RESTORED TO THE ORIGINAL CONDITION OR BETTER TO THE SATISFACTION OF THE AUTHORITIES HAVING JURISDICTION.
2. CONTRACTOR TO VERIFY THE PRECISE LOCATIONS AND INVERT ELEVATIONS OF EX. UNDERGROUND SERVICES AND EX. UTILITIES PRIOR TO STARTING CONSTRUCTION.
3. ALL EXISTING TREES, SHRUBS ETC. WITHIN LOTS, BLOCKS AND ROADS TO BE REMOVED, UNLESS OTHERWISE NOTED.
4. PERMISSION REQUIRED FOR WORK ON ADJACENT LANDS.
5. FOR WATERMAIN STUBS, 2.4m MIN. COVER TO BE PROVIDED.
6. ANY DISTURBED MATERIAL ENCOUNTERED BELOW THE SUBGRADE LEVEL WITHIN A BUILDING FOOTPRINT TO BE SUB-EXCAVATED AND BACKFILLED WITH COMPACTED ENGINEERED FILL AS PER GEOTECHNICAL ENGINEERS RECOMMENDATION.
7. FOR CATCHBASIN DATA, REFER TO DWG. No. 2 FOR DETAILS.
8. ALL DWELLINGS TO BE PROVIDED WITH PRESSURE REDUCING VALVES UNLESS OTHERWISE NOTED.
9. WATERMAIN INSULATION TO BE PROVIDED PER CITY STD. W22.
10. WATERMANS OVER SEWERS TO BE PER CITY STD. W25.2.
11. WATERMANS UNDER SEWERS TO BE PER CITY STD. W25.



LEGEND

CROSS	STREET LIGHT STANDARD	CONCRETE SIDEWALK	CURB & RECESSED CURB
45° BEND	ASPHALT SIDEWALK	CHALK LINE (1.5m UNLESS OTHERWISE NOTED)	NOISE BARRIER (2.2m)
LATERAL	WOODEN POST AND RAIL FENCE	CONSTRUCTION FENCE	POST AND RAIL FENCE
HYDRANT, VALVE & VB	PHASING LIMITS	PROPERTY BOUNDARY	BOREROLE (BO)
TEE	VALVE & VB	TEST PIT (TP)	AUGER HOLE (AH)
VALVE & VC	11.25° BEND	REDUCER	CAP
VALVE & VB	SANITARY MAINTENANCE HOLE	CAP	STREET CATCHBASIN & LEAD
22.5° BEND	STREET CATCHBASIN WITH CLOSED LID & LEAD	STORM MAINTENANCE HOLE	CURB INLET CATCHBASIN & LEAD
11.25° BEND	CATCHBASIN/ MAINTENANCE HOLE INTERCONNECTED	CATCH BASIN & LEADS	CURB STOP
REDUCER	TEE CATCHBASIN	PERFORATED PIPE	ELBOW CATCHBASIN
CAP	DITCH AND CULVERT	HYDRO TRANSFORMER	RETAINING WALL (SEE NOTES ON DWG. 1 AND STRUCTURAL DWG'S FOR DETAIL)
STREET CATCHBASIN & LEAD	STORM MAINTENANCE HOLE	SINGLE SERVICE LOCATION (ST, SAN & WM)	CLAY SEAL (REFER TO GENERAL NOTES, No. 18, ON DWG. No. 1, AND GEOTECHNICAL CONSULTANT'S SPECIFICATIONS)



TOPOGRAPHIC INFORMATION
 TOPOGRAPHIC INFORMATION PROVIDED BY ANNIS, O'SULLIVAN, VOLLEBEKK LTD.
 PROJECT NO. 21942-22 DATED SEPTEMBER 1, 2022

SITE PLAN INFORMATION
 SITE PLAN PROVIDED BY SRN ARCHITECTS, DATED ON OCTOBER 20, 2025.

ELEVATION NOTE
 ELEVATIONS ARE GEODETIC AND ARE REFERRED TO THE CGVD28 GEODETIC DATUM, DERIVED FROM VERTICAL CONTROL MONUMENT NO. BM88U502.
ELEVATION = 106.039 m

No.	BY	DATE	DESCRIPTION
3	S.L.M.	2025-12-19	3rd SUBMISSION
2	S.L.M.	2025-10-24	2nd SUBMISSION
1	S.L.M.	2025-06-20	1st SUBMISSION

CITY OF OTTAWA

PROJECT No. 1295_Block13

Minto Group

ABBOTT'S RUN BLOCK 13

DSEL

120 Iher Road, Unit 103
 Stittsville, ON K2S 1E9
 Tel: (613) 836-0856
 Fax: (613) 836-7183
 www.DSEL.ca

© DSEL

Servicing Block 1

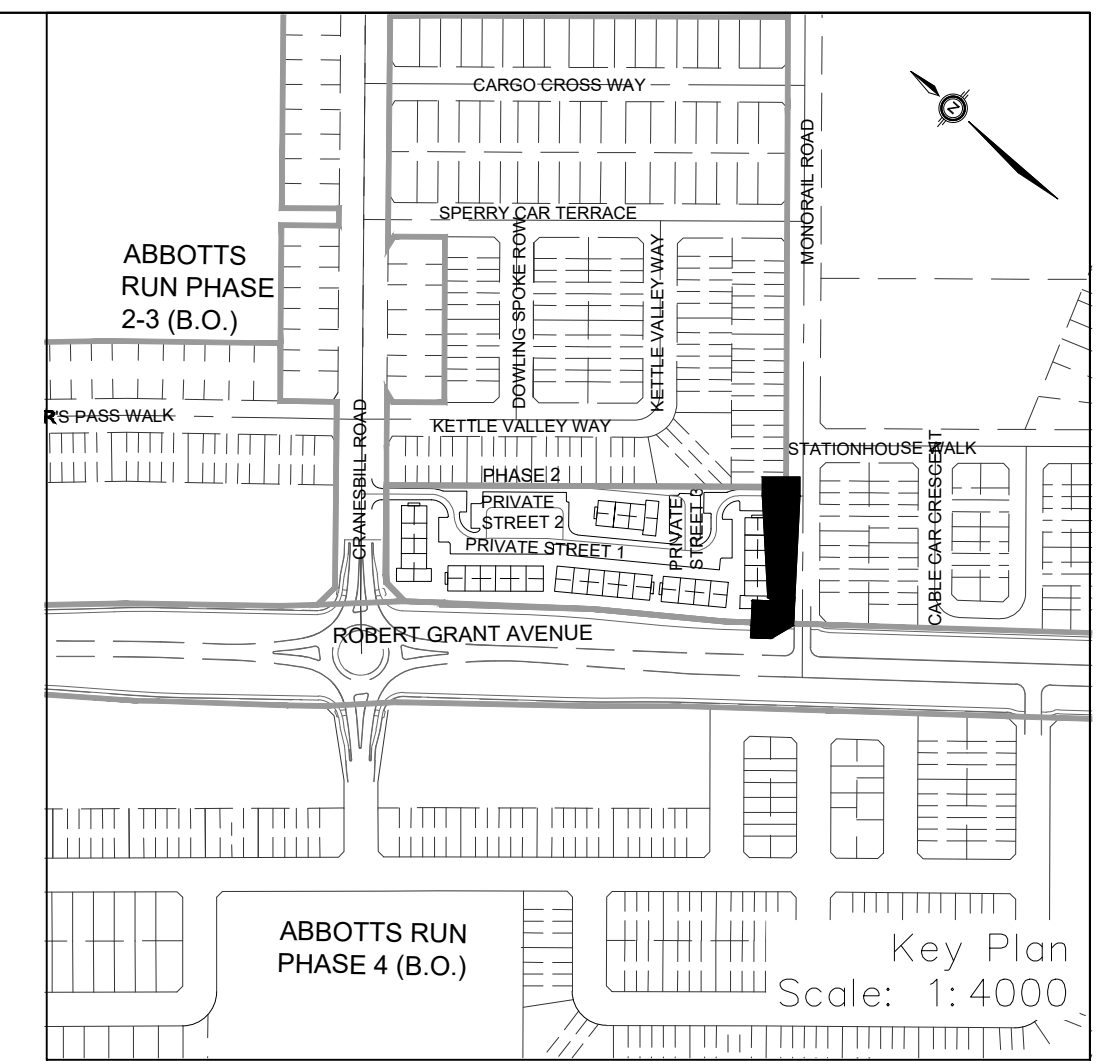
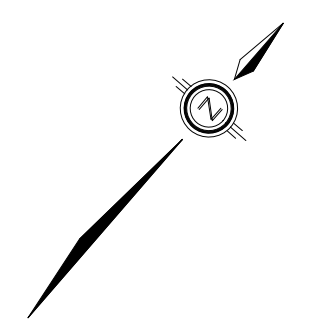
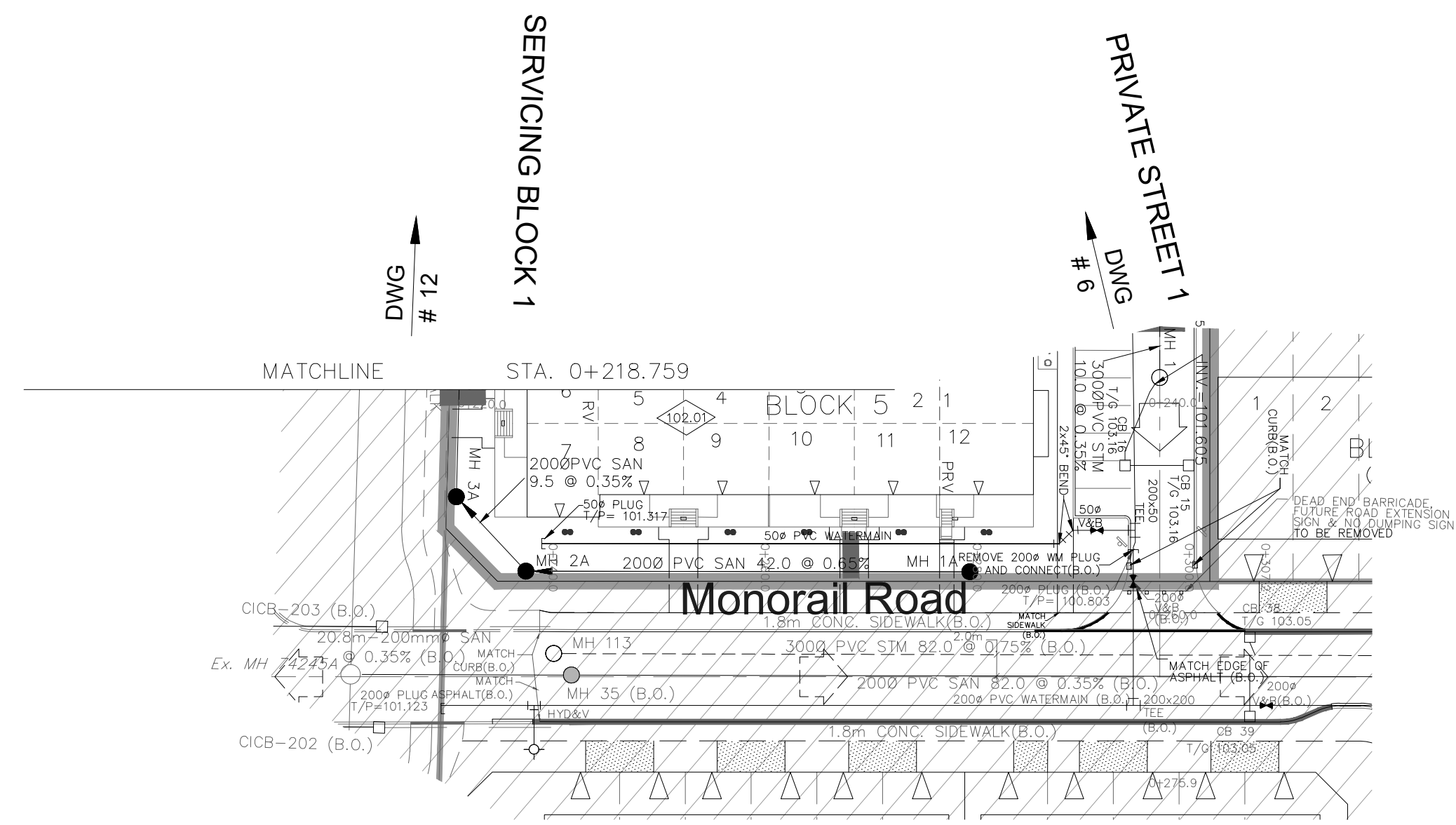
STA. 0+10.000 TO STA. 0+78.739

DRAWN BY: E.D.	CHECKED BY: S.L.M.	SHEET NO.
DESIGNED BY: E.D.	CHECKED BY: S.L.M.	11 OF 19
SCALE: H=1:500 / V=1:50	DATE: JUNE 2025	

CITY FILE No. D07-12-25-0089 CITY PLAN No. 19356

NOTES:

1. ANY DISTURBED AREA DURING CONSTRUCTION TO BE RESTORED TO THE ORIGINAL CONDITION OR BETTER TO THE SATISFACTION OF THE AUTHORITIES HAVING JURISDICTION.
2. CONTRACTOR TO VERIFY THE PRECISE LOCATIONS AND INVERT ELEVATIONS OF EX. UNDERGROUND SERVICES AND EX. UTILITIES PRIOR TO STARTING CONSTRUCTION.
3. ALL EXISTING TREES, SHRUBS ETC. WITHIN LOTS, BLOCKS AND ROADS TO BE REMOVED, UNLESS OTHERWISE NOTED.
4. PERMISSION REQUIRED FOR WORK ON ADJACENT LANDS.
5. FOR WATERMAIN STUBS, 2.4m MIN. COVER TO BE PROVIDED.
6. ANY DISTURBED MATERIAL ENCOUNTERED BELOW THE SUBGRADE LEVEL WITHIN A BUILDING FOOTPRINT TO BE SUB-EXCAVATED AND BACKFILLED WITH COMPACTED ENGINEERED FILL AS PER GEOTECHNICAL ENGINEERS RECOMMENDATION.
7. FOR CATCHBASIN DATA, REFER TO DWG. No. 2 FOR DETAILS.
8. ALL DWELLINGS TO BE PROVIDED WITH PRESSURE REDUCING VALVES UNLESS OTHERWISE NOTED.
9. WATERMAIN INSULATION TO BE PROVIDED PER CITY STD. W22.
10. WATERMANS OVER SEWERS TO BE PER CITY STD. W25.2.
11. WATERMANS UNDER SEWERS TO BE PER CITY STD. W25.



LEGEND

45° BEND	CROSS	STREET LIGHT STANDARD
LATERAL	CONCRETE SIDEWALK	CURB & RECESSED CURB
HYDRANT, VALVE & VB	ASPHALT SIDEWALK	CHAIN LINK FENCE (1.5m UNLESS OTHERWISE NOTED)
TEE	NOISE BARRIER (2.2m)	WOODEN POST AND RAIL FENCE
VALVE & VC	WOODEN POST AND RAIL FENCE	CONSTRUCTION FENCE
VALVE & VB	CONSTRUCTION FENCE	POST AND RAIL FENCE
22.5° BEND	PHASING LIMITS	PROPERTY BOUNDARY
11.25° BEND	PROPERTY BOUNDARY	BOREHOLE (BH)
REDUCER	TEST PIT (TP)	AUGER HOLE (AH)
CAP	TEST PIT (TP)	MONITORING WELL LOCATION
SANITARY MAINTENANCE HOLE	AUGER HOLE (AH)	CONCEPTUAL WELL LOCATION
HOLE	MONITORING WELL LOCATION	CONCEPTUAL WELL LOCATION
CAP	CONCEPTUAL WELL LOCATION	CONCEPTUAL WELL LOCATION
STREET CATCHBASIN & LEAD	CONCEPTUAL WELL LOCATION	CONCEPTUAL WELL LOCATION
STREET CATCHBASIN WITH CLOSED LID & LEAD	CONCEPTUAL WELL LOCATION	CONCEPTUAL WELL LOCATION
STORM MAINTENANCE HOLE	CONCEPTUAL WELL LOCATION	CONCEPTUAL WELL LOCATION
CURB INLET CATCHBASIN & LEAD	CONCEPTUAL WELL LOCATION	CONCEPTUAL WELL LOCATION
CATCHBASIN/ MAINTENANCE HOLE	CONCEPTUAL WELL LOCATION	CONCEPTUAL WELL LOCATION
INTERCONNECTED	CONCEPTUAL WELL LOCATION	CONCEPTUAL WELL LOCATION
CATCH BASIN & LEADS	CONCEPTUAL WELL LOCATION	CONCEPTUAL WELL LOCATION
CAP	CONCEPTUAL WELL LOCATION	CONCEPTUAL WELL LOCATION
CURB STOP	CONCEPTUAL WELL LOCATION	CONCEPTUAL WELL LOCATION
SINGLE SERVICE LOCATION (ST, SAN & WM)	CONCEPTUAL WELL LOCATION	CONCEPTUAL WELL LOCATION
TEE CATCHBASIN	CONCEPTUAL WELL LOCATION	CONCEPTUAL WELL LOCATION
PERFORATED PIPE	CONCEPTUAL WELL LOCATION	CONCEPTUAL WELL LOCATION
ELBOW CATCHBASIN	CONCEPTUAL WELL LOCATION	CONCEPTUAL WELL LOCATION
DITCH AND CULVERT	CONCEPTUAL WELL LOCATION	CONCEPTUAL WELL LOCATION
HYDRO TRANSFORMER	CONCEPTUAL WELL LOCATION	CONCEPTUAL WELL LOCATION
RETAINING WALL (SEE NOTES ON DWG. 1 AND STRUCTURAL DWG'S FOR DETAIL)	CONCEPTUAL WELL LOCATION	CONCEPTUAL WELL LOCATION
SINGLE SERVICE LOCATION (ST, SAN & WM)	CONCEPTUAL WELL LOCATION	CONCEPTUAL WELL LOCATION

AS PER GEOTECHNICAL REPORT

UNDERSIDE OF FOOTING ELEVATION

NUMBER OF RISERS

UNITS REQUIRING PRESSURE REDUCING VALVES

WALKOUT UNITS

SLAB ON GRADE

OVERLAND FLOW DIRECTION

EXTERNAL OVERLAND FLOW DIRECTION

EMERGENCY OVERLAND FLOW DIRECTION

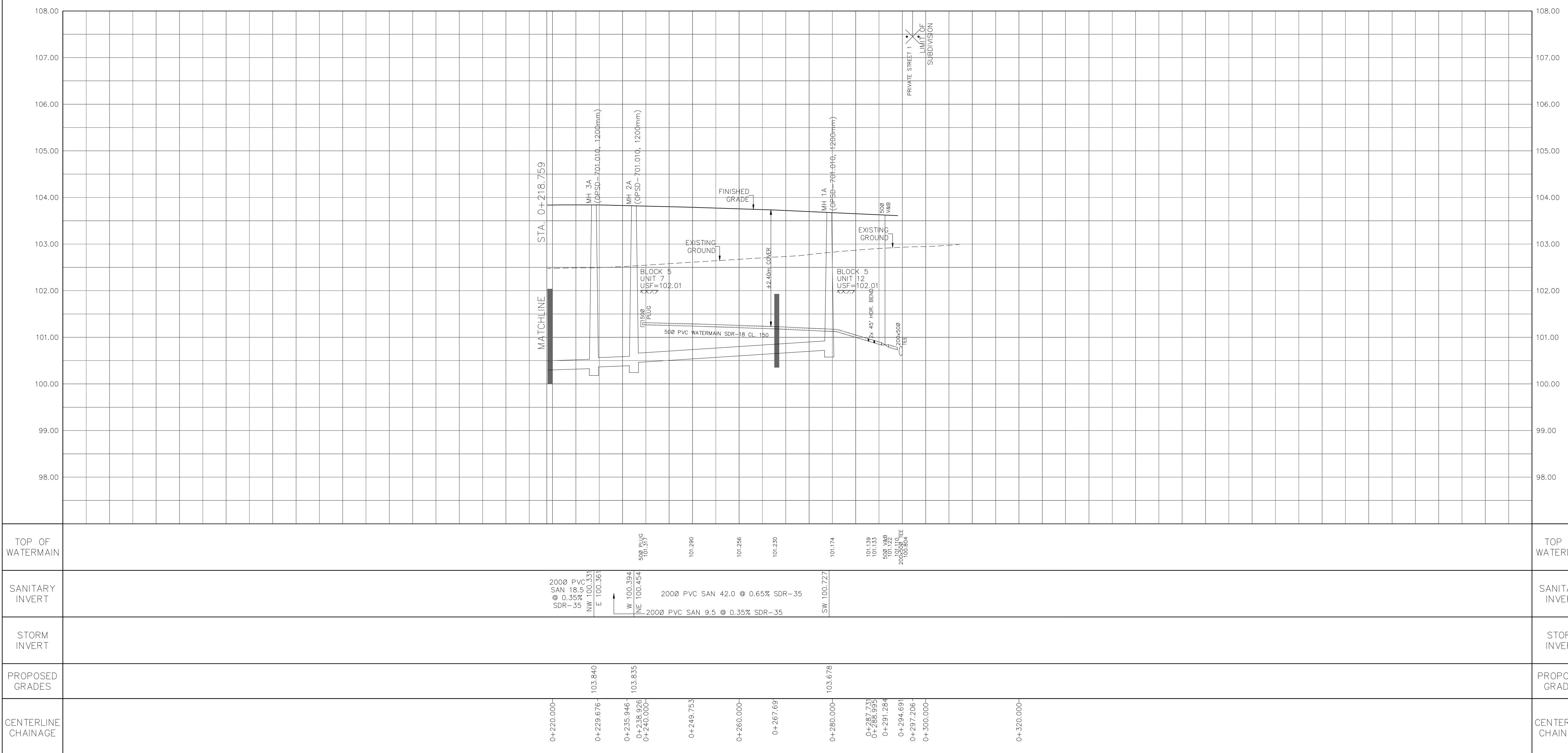
TACTILE WALKING SURFACE INDICATOR (AS PER CITY OF OTTAWA STD. SC6, SC7, SC7.1, SC7.2, SC7.3)

PREVIOUS PHASE

EXISTING SANITARY MAINTENANCE HOLE

EXISTING STORM MAINTENANCE HOLE

CLAY SEAL (REFER TO GENERAL NOTES, No. 18, ON DWG. No. 1, AND GEOTECHNICAL CONSULTANT'S SPECIFICATIONS)



TOPOGRAPHIC INFORMATION
TOPOGRAPHIC INFORMATION PROVIDED BY ANNIS, O'SULLIVAN, VOLLEBEKK LTD. PROJECT NO. 21942-22 DATED SEPTEMBER 1, 2022

SITE PLAN INFORMATION
SITE PLAN PROVIDED BY SRN ARCHITECTS, DATED ON OCTOBER 20, 2025.

ELEVATION NOTE
ELEVATIONS ARE GEODETIC AND ARE REFERRED TO THE CGVD28 GEODETIC DATUM, DERIVED FROM VERTICAL CONTROL MONUMENT NO. BMB8U502.
ELEVATION = 106.039 m

No.	BY	DATE	DESCRIPTION
3	S.L.M.	2025-12-19	3rd SUBMISSION
2	S.L.M.	2025-10-24	2nd SUBMISSION
1	S.L.M.	2025-06-20	1st SUBMISSION

CITY OF OTTAWA

PROJECT No. 1295_Block13

ABBOTT'S RUN BLOCK 13

DSEL
120 Ibor Road, Unit 103
Stittville, ON K2S 1E9
Tel: (613) 836-0856
Fax: (613) 836-7183
www.DSEL.ca

© DSEL

Servicing Block 1
STA. 0+218.759 TO STA. 0+307.206

DRAWN BY: E.D.	CHECKED BY: S.L.M.	SHEET NO.
DESIGNED BY: E.D.	CHECKED BY: S.L.M.	13 OF 19
SCALE: H=1:500 / V=1:50	DATE: JUNE 2025	

CITY FILE No. D07-12-25-0089 CITY PLAN No. 19356