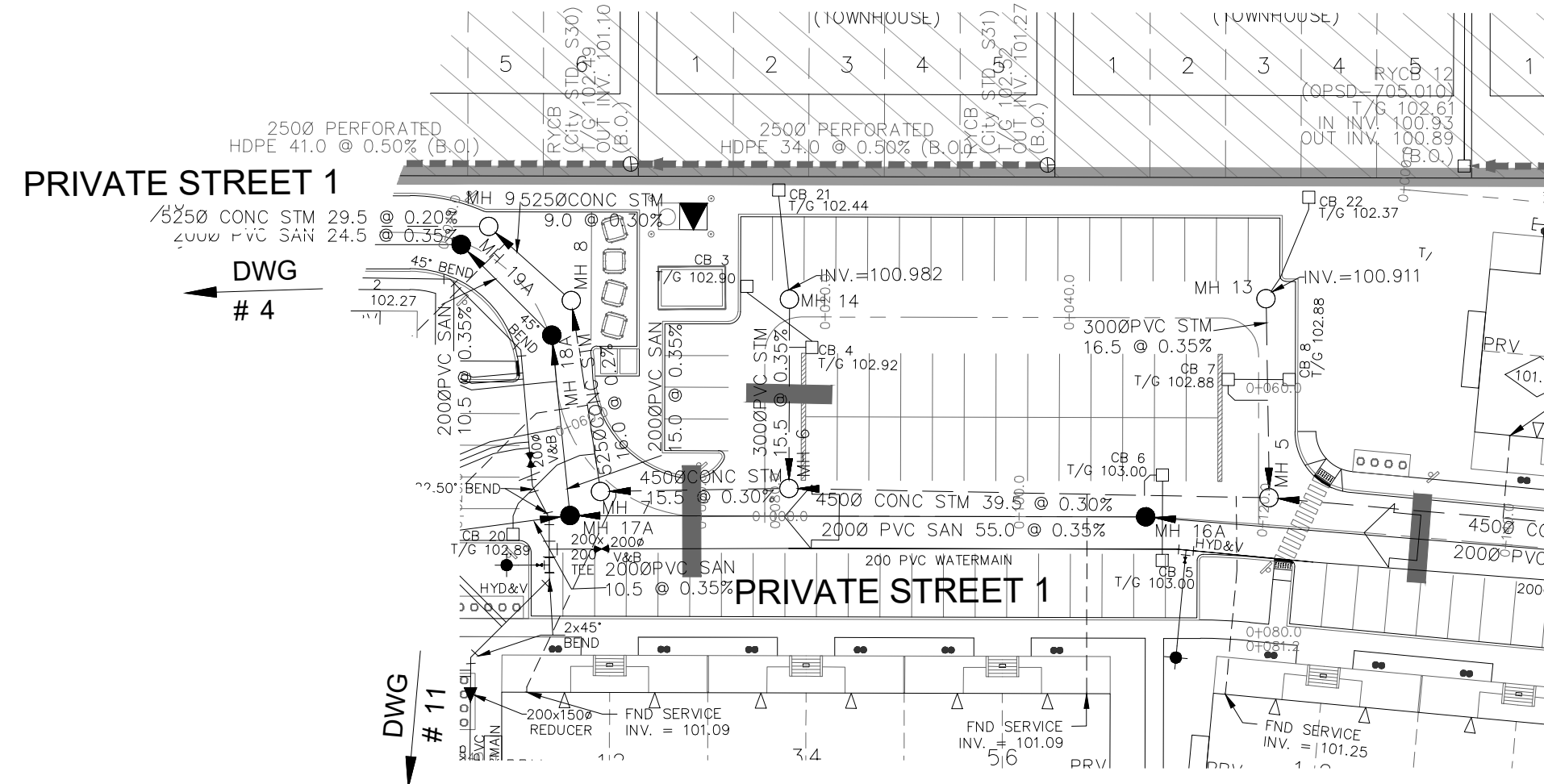


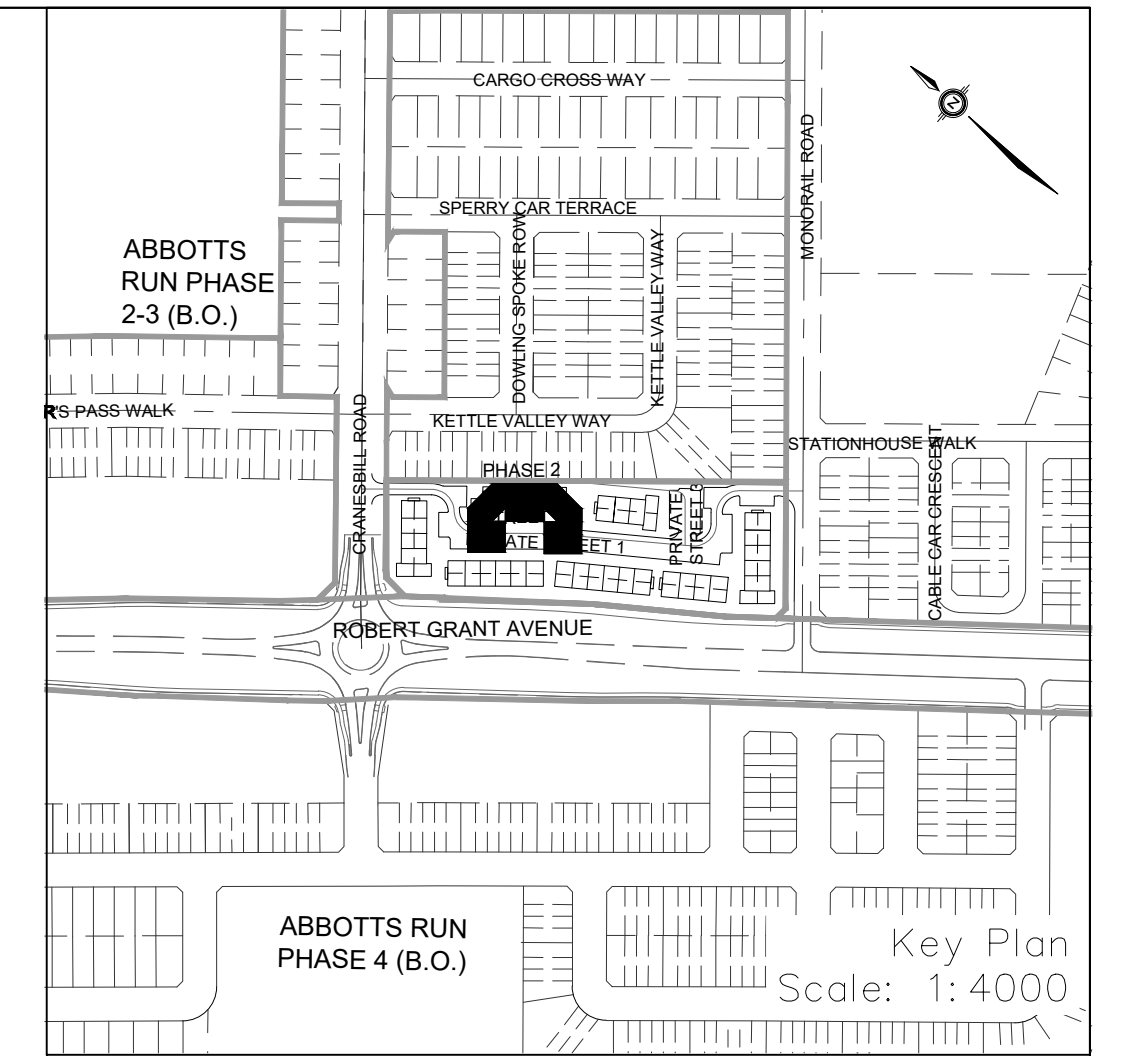
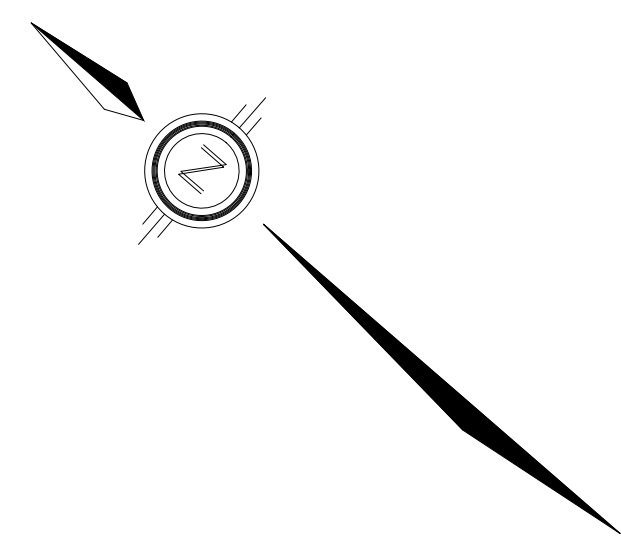
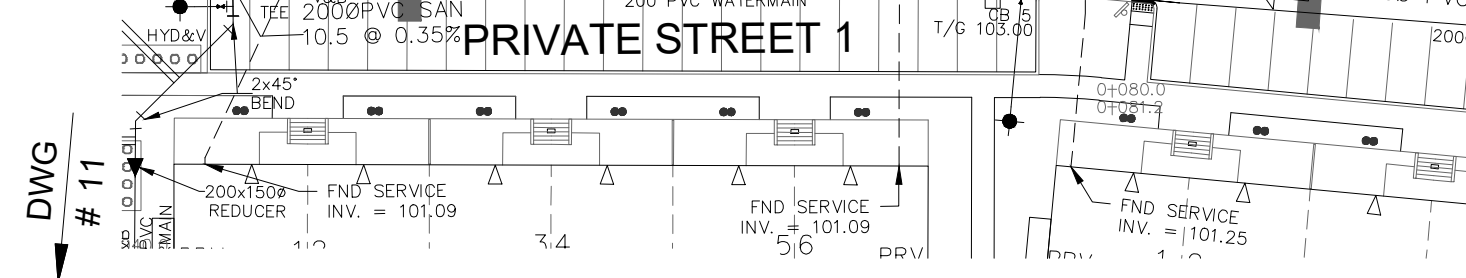
**NOTES:**

1. ANY DISTURBED AREA DURING CONSTRUCTION TO BE RESTORED TO THE ORIGINAL CONDITION OR BETTER TO THE SATISFACTION OF THE AUTHORITIES HAVING JURISDICTION.
2. CONTRACTOR TO VERIFY THE PRECISE LOCATIONS AND INVERT ELEVATIONS OF EX. UNDERGROUND SERVICES AND EX. UTILITIES PRIOR TO STARTING CONSTRUCTION.
3. ALL EXISTING TREES, SHRUBS ETC. WITHIN LOTS, BLOCKS AND ROADS TO BE REMOVED, UNLESS OTHERWISE NOTED.
4. PERMISSION REQUIRED FOR WORK ON ADJACENT LANDS.
5. FOR WATERMAIN STUBS, 2.4m MIN. COVER TO BE PROVIDED.
6. ANY DISTURBED MATERIAL ENCOUNTERED BELOW THE SUBGRADE LEVEL WITHIN A BUILDING FOOTPRINT TO BE SUB-EXCAVATED AND BACKFILLED WITH COMPACTED ENGINEERED FILL AS PER GEOTECHNICAL ENGINEERS RECOMMENDATION.
7. FOR CATCHBASIN DATA, REFER TO DWG. No. 2 FOR DETAILS.
8. ALL DWELLINGS TO BE PROVIDED WITH PRESSURE REDUCING VALVES UNLESS OTHERWISE NOTED.
9. WATERMAIN INSULATION TO BE PROVIDED PER CITY STD. W22.
10. WATERMANS OVER SEWERS TO BE PER CITY STD. W25.2.
11. WATERMANS UNDER SEWERS TO BE PER CITY STD. W25.

**PRIVATE STREET 1**  
DWG # 4



**PRIVATE STREET 1**  
DWG # 5



**LEGEND**

|                              |  |   |   |
|------------------------------|--|---|---|
| 45° BEND                     | CROSS  | STREET LIGHT STANDARD                         | CONCRETE SIDEWALK   |
| LATERAL                      | HYDRANT, VALVE & VB  | CURB & RECESSED CURB                          | ASPHALT SIDEWALK  |
| TEE                          | VALVE & VC   | CHAINLINK FENCE (1.5m UNLESS OTHERWISE NOTED) | NOISE BARRIER (2.2m)  |
| VALVE & VB                   | WOODEN POST AND RAIL FENCE   | CONSTRUCTION FENCE                            | POST AND RAIL FENCE   |
| 22.5° BEND                   | 11.25° BEND  | REDUCER                                       | PHASING LIMITS  |
| CAP                          | SANITARY MAINTENANCE HOLE  | CONCEPTUAL WELL LOCATION                      | PROPERTY BOUNDARY   |
| STREET CATCHBASIN & LEAD     | STREET CATCHBASIN WITH CLOSED LID & LEAD                             | STORM MAINTENANCE HOLE                        | UNDERSIDE OF FOOTING ELEVATION  |
| CURB INLET CATCHBASIN & LEAD | CATCHBASIN/ MAINTENANCE HOLE   | INTERCONNECTED CATCH BASIN & LEADS            | NUMBER OF RISERS  |
| PERFORATED PIPE              | ELBOW CATCHBASIN   | DITCH AND CULVERT                             | UNITS REQUIRING PRESSURE  |
| HYDRO TRANSFORMER            | RETAINING WALL (SEE NOTES ON DWG. 1 AND STRUCTURAL DWG'S FOR DETAIL) | SINGLE SERVICE LOCATION (ST, SAN & WM)        | WALKOUT UNITS   |
|                              |  |   | SLAB ON GRADE   |
|                              |  |   | OVERLAND FLOW DIRECTION   |
|                              |  |   | EXTERNAL OVERLAND FLOW DIRECTION  |
|                              |  |   | EMERGENCY OVERLAND FLOW DIRECTION   |
|                              |  |   | TACTILE WALKING SURFACE INDICATOR (AS PER CITY OF OTTAWA STD. SC6, SC7, SC7.1, SC7.2, SC7.3)            |
|                              |  |   | PREVIOUS PHASES   |
|                              |  |   | EXISTING SANITARY MAINTENANCE HOLE  |
|                              |  |   | EXISTING STORM MAINTENANCE HOLE   |
|                              |  |   | CLAY SEAL (REFER TO GENERAL NOTES, No. 18, ON DWG. No. 1, AND GEOTECHNICAL CONSULTANT'S SPECIFICATIONS) |

**AS PER GEOTECHNICAL REPORT**

**TOPOGRAPHIC INFORMATION**  
TOPOGRAPHIC INFORMATION PROVIDED BY ANNIS, O'SULLIVAN, VOLLEBEKK LTD. PROJECT NO. 21942-22 DATED SEPTEMBER 1, 2022

**SITE PLAN INFORMATION**  
SITE PLAN PROVIDED BY SRN ARCHITECTS, DATED ON OCTOBER 20, 2025.

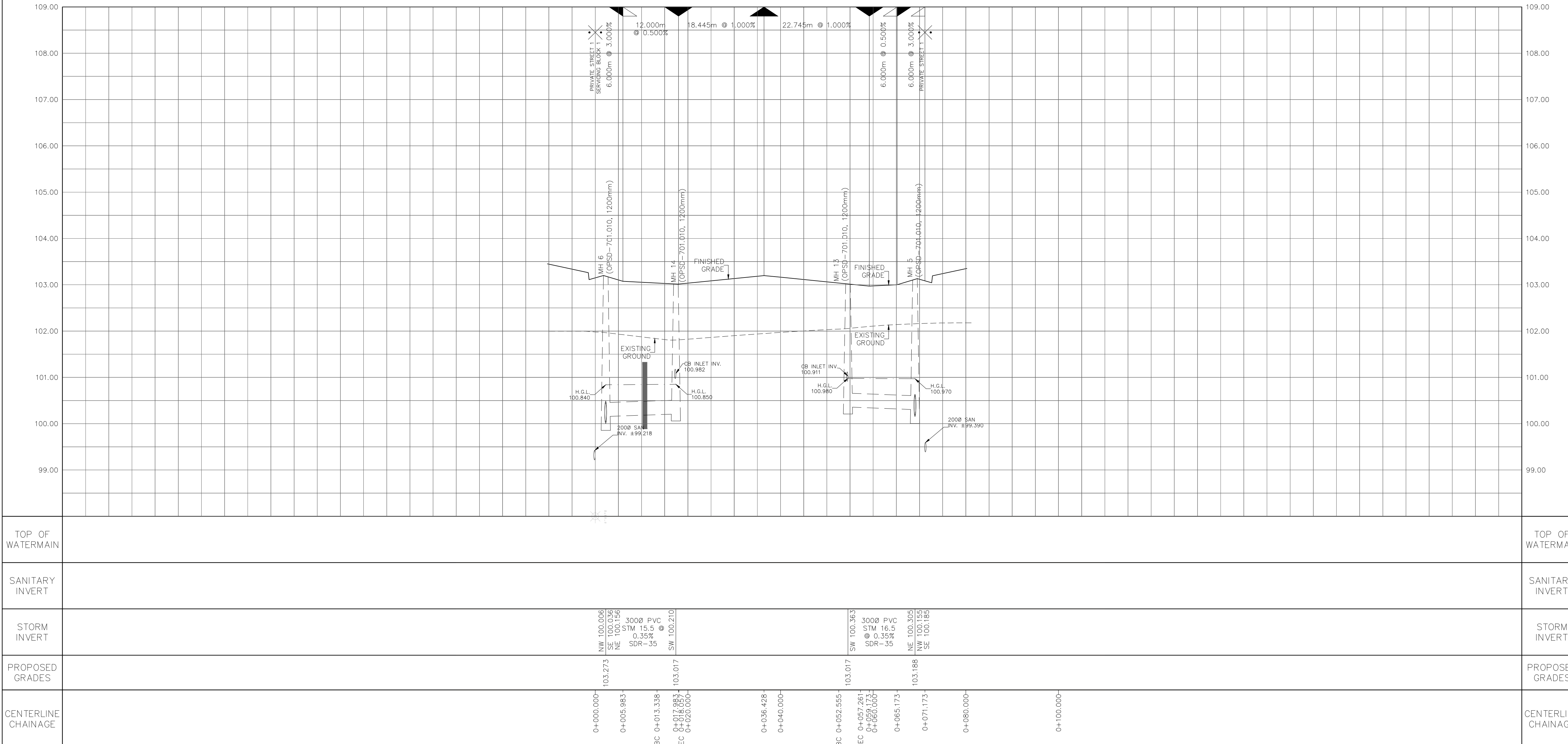
**ELEVATION NOTE**  
ELEVATIONS ARE GEODETIC AND ARE REFERRED TO THE CGVD28 GEODETIC DATUM, DERIVED FROM VERTICAL CONTROL MONUMENT NO. BM88U502.  
ELEVATION = 106.039 m

| No. | BY    | DATE       | DESCRIPTION    |
|-----|-------|------------|----------------|
| 3   | S.L.M | 2025-12-19 | 3rd SUBMISSION |
| 2   | S.L.M | 2025-10-24 | 2nd SUBMISSION |
| 1   | S.L.M | 2025-06-20 | 1st SUBMISSION |

**CITY OF OTTAWA**

PROJECT No. 1295\_Block13

**S.L. MERRICK**  
100189323  
2025-12-19  
PROVINCE OF ONTARIO



**ABBOTT'S RUN BLOCK 13**

**Minto Group**

**DSEL**  
120 Ibbet Road, Unit 103  
Stittsville, ON K2S 1E9  
Tel: (613) 836-0856  
Fax: (613) 836-7183  
www.DSEL.ca

**Private Street 2**  
STA. 0+10.000 TO STA. 0+81.173

|                         |                    |           |
|-------------------------|--------------------|-----------|
| DRAWN BY: E.D.          | CHECKED BY: S.L.M. | SHEET NO. |
| DESIGNED BY: E.D.       | CHECKED BY: S.L.M. | 8 OF 19   |
| SCALE: H=1:500 / V=1:50 | DATE: JUNE 2025    |           |

CITY FILE No. D07-12-25-0089 CITY PLAN No. 19356