

- WATERMAIN NOTES:**
- SPECIFICATIONS: ITEM, SPEC. No., REFERENCE
 - WATERMAIN TRENCHING: THERMAL INSULATION IN SHALLOW TRENCHES, WATERMAIN CROSSING BELOW SEWER
 - SUPPLY AND CONSTRUCT ALL WATERMANS AND APPURTENANCES IN ACCORDANCE WITH THE CITY OF OTTAWA STANDARDS AND SPECIFICATIONS. EXCAVATION, INSTALLATION, BACKFILL AND RESTORATION OF ALL WATERMANS BY THE CONTRACTOR. CONNECTIONS AND SHUT-OFFS AT THE MAIN AND CHLORINATION OF THE WATER SYSTEM SHALL BE PERFORMED BY CITY OFFICIALS.
 - WATERMAIN SHALL BE MINIMUM 2.4m DEPTH BELOW GRADE UNLESS OTHERWISE INDICATED.
 - PROVIDE MINIMUM 0.5m CLEARANCE BETWEEN OUTSIDE OF PIPES AT ALL CROSSINGS.
 - WATER SERVICE IS TO BE CONSTRUCTED TO WITHIN 1.0m OF FOUNDATION WALL AND CAPPED, UNLESS OTHERWISE INDICATED.
 - ALL 50mm WATER SERVICES SHALL HAVE A MINIMUM OF 0.3m CLEARANCE AT SEWER CROSSINGS PER CITY OF OTTAWA DETAIL W38

- SEWER NOTES:**
- SPECIFICATIONS: ITEM, SPEC. No., REFERENCE
 - CATCHBASIN (600x600mm): CP5D, STORM / SANITARY MANHOLE (12000): 701 010, CB, FRAME & COVER: S19.1, S22.1 & S23, SEWER TRENCH - BEDDING (GRANULAR A): S24, S24.1, & S52, COVER (GRANULAR A OR GRANULAR B TYPE 1) WITH MAXIMUM PARTICLE SIZE 25mm
 - INSULATE ALL PIPES (SANSTM) THAT HAVE LESS THAN 2.0m COVER WITH 50mmx1200mm H-40 INSULATION. PROVIDE 150mm CLEARANCE BETWEEN PIPE AND INSULATION.
 - PIPE BEDDING, COVER AND BACKFILL ARE TO BE COMPACTED TO AT LEAST 95% OF THE STANDARD PROCTOR MAXIMUM DRY DENSITY. THE USE OF CLEAR CRUSHED STONE AS A BEDDING LAYER SHALL NOT BE PERMITTED.
 - FLEXIBLE CONNECTIONS ARE REQUIRED FOR CONNECTING PIPES TO MANHOLES FOR EXAMPLE KORN-SEAL, PVC POSITIVE SEAL AND DURASEAL. THE CONCRETE GRADLE FOR THE PIPE CAN BE ELIMINATED.
 - THE OWNER SHALL REQUIRE THAT THE SITE SERVICING CONTRACTOR PERFORM FIELD TESTS FOR QUALITY CONTROL OF ALL SANITARY SEWERS. LEAKAGE TESTING SHALL BE COMPLETED IN ACCORDANCE WITH CPSS 410.17.16, 410.07.16 AND 407.24. DYE TESTING IS TO BE COMPLETED ON ALL SANITARY SEWERS TO CONFIRM PROPER CONNECTION TO THE SANITARY SEWER MAIN. THE FIELD TESTS SHALL BE PERFORMED IN THE PRESENCE OF A CERTIFIED PROFESSIONAL ENGINEER WHO SHALL SUBMIT A CERTIFIED COPY OF THE TEST RESULTS.
 - STORM MANHOLES AND CBMS ARE TO HAVE 300mm SLUMPS UNLESS OTHERWISE INDICATED.
 - CONTRACTOR TO TELEVIEW (CCTV) ALL PROPOSED SEWERS, 200mm OR GREATER PRIOR TO BASE COURSE ASPHALT. UPON COMPLETION OF CONTRACT, THE CONTRACTOR IS RESPONSIBLE TO FLUSH AND CLEAN ALL SEWERS & APPURTENANCES.

100mm WATERMAIN TABLE

STATION	SURFACE ELEVATION	TOP OF WM ELEVATION	DESCRIPTION
2+000	97.51	95.00	100 OFF 200 TEE c/w ISOLATION VALVE
2+002.6	97.48	95.00	CROSS UNDER 200mm CB LEAD (INV = 95.93, 0.9m CLEARANCE)
2+004	97.50	95.00	100mm VALVE AND VALVE BOX
2+018	97.80	95.30 **	CROSS OVER 200mm SAN (OBV = 94.32, 0.9m CLEARANCE)
2+020	97.85	95.95 **	CROSS OVER 250mm STM (OBV = 95.41, 0.3m CLEARANCE) c/w VERTICAL BENDS AND INSULATION
2+025	98.00	96.00 **	100mm WM
2+028	98.17	95.80 **	50 OFF 100 CROSS (BUILDING 4 & 5 SERVICE) c/w STANDPOSTS
2+030	98.24	95.80 **	CROSS OVER 150mm SAN SERV (OBV = 95.15, 0.5m CLEARANCE)
2+050	98.40	95.95	100mm WM
2+054	98.35	95.95	CROSS OVER 150mm SAN SERV (OBV = 94.35, 0.9m CLEARANCE)
2+056.1	98.28	95.85	100 OFF 50 TEE (BUILDING 4 & 5 SERVICE) c/w STANDPOSTS

200mm WATERMAIN TABLE

STATION	SURFACE ELEVATION	TOP OF WM ELEVATION	DESCRIPTION
1+000	97.95	95.10 *	CONNECT TO EXISTING 200mm WM SUBROUT
1+001	97.98	95.10	50 OFF 200 TEE (BUILDING 2 SERVICE) c/w STANDPOST
1+004	97.98	95.25	45° HORIZONTAL BEND
1+008	97.99	95.40	50 OFF 200 TEE (BUILDING 1 SERVICE) c/w STANDPOST
1+025	97.97	95.40	200mm WM
1+027	97.95	94.55	CROSS UNDER 150mm SAN SERV (INV = 95.28, 0.5m CLEARANCE) c/w VERTICAL BENDS
1+028	97.93	94.70	150 OFF 200 FIRE HYDRANT TEE
1+029	97.91	94.70	45° HORIZONTAL BEND
1+032	97.74	95.10	50 OFF 200 TEE (BUILDING 1 SERVICE) c/w STANDPOST
1+037	97.63	95.10	50 OFF 200 TEE (BUILDING 2 SERVICE) c/w STANDPOST
1+040	97.56	95.10	45° HORIZONTAL BEND
1+050	97.59	95.00	200mm WM
1+050.3	97.58	95.00	CROSS UNDER 150mm STM SERV (INV = 95.33, 0.5m CLEARANCE) c/w VERTICAL BENDS
1+050.9	97.57	95.00	50 OFF 200 TEE (BUILDING 2 SERVICE) c/w STANDPOST
1+059	97.53	95.10	50 OFF 200 TEE (BUILDING 3 SERVICE) c/w STANDPOST
1+061	97.56	95.25 **	CROSS OVER 200mm SAN (OBV = 95.51, 0.3m CLEARANCE) c/w VERTICAL BENDS AND INSULATION
1+068	97.53	95.00	50 OFF 200 TEE (BUILDING 3 SERVICE) c/w STANDPOST
1+069	97.51	95.00	100 OFF 200 TEE c/w ISOLATION VALVE
1+075	97.53	95.00	200mm WM
1+078.7	97.54	94.70	CROSS UNDER 150mm STM SERV (INV = 95.25, 0.9m CLEARANCE) c/w VERTICAL BENDS
1+080.3	97.55	94.70	50 OFF 200 TEE (BUILDING 3 SERV) c/w STANDPOST
1+090.9	97.71	95.10	11.25° HORIZONTAL BEND
1+091.0	97.71	95.10 *	CONNECT TO EXISTING 200mm WM SUBROUT

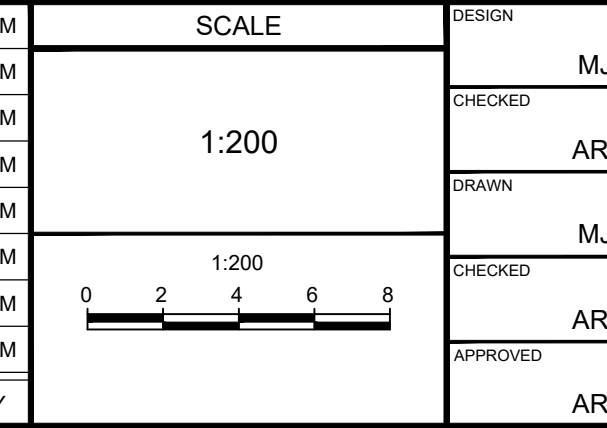
* CONNECTION TO EXISTING 200mm WATERMAIN. EXACT ELEVATION TO BE FIELD DETERMINED.
 ** PROVIDE THERMAL INSULATION AS PER CITY OF OTTAWA DETAIL W23 AND DETAIL W22 WHERE COVER IS LESS THAN 2.4m AND/OR ADJACENT TO OPEN STRUCTURES.

ADSTOCK HEIGHTS

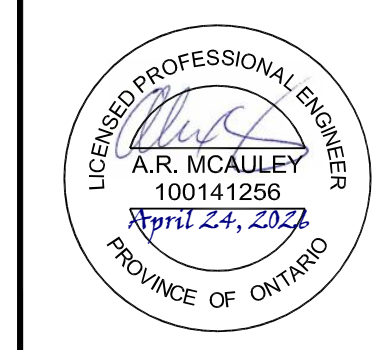
ABBOTT STREET

NOTE: THE POSITION OF ALL POLE LINES, CONDUITS, WATERMANS, SEWERS AND OTHER UNDERGROUND AND OVERGROUND UTILITIES AND STRUCTURES IS NOT NECESSARILY SHOWN ON THE CONTRACT DRAWINGS, AND WHERE SHOWN, THE ACCURACY OF THE POSITION OF SUCH UTILITIES AND STRUCTURES IS NOT GUARANTEED. BEFORE STARTING WORK, DETERMINE THE EXACT LOCATION OF ALL SUCH UTILITIES AND STRUCTURES AND ASSUME ALL LIABILITY FOR DAMAGE TO THEM.

No.	REVISION	DATE	BY	No.	REVISION	DATE	BY
8	REVISED PER CITY AND MVCA COMMENTS	FEB 12/26	ARM	9	REVISED PER CITY AND MVCA COMMENTS	APR 24/26	ARM
7	REVISED PER CITY AND MVCA COMMENTS	FEB 2/26	ARM	8	ISSUED FOR PHASE 4/5 TENDER	OCT 6/22	ARM
6	ISSUED FOR COORDINATION	DEC 5/25	ARM	7	ISSUED WITH ADDENDUM #3	OCT 19/22	ARM
5	ISSUED FOR REVIEW	JUN 13/25	ARM	6	ISSUED FOR COORDINATION	FEB 18/25	ARM
4	ISSUED FOR COORDINATION	JUN 05/25	ARM	5	ISSUED FOR COORDINATION	FEB 18/25	ARM
3	ISSUED FOR COORDINATION	FEB 18/25	ARM	4	ISSUED FOR COORDINATION	FEB 18/25	ARM
2	ISSUED WITH ADDENDUM #3	OCT 19/22	ARM	3	ISSUED FOR COORDINATION	FEB 18/25	ARM
1	ISSUED FOR PHASE 4/5 TENDER	OCT 6/22	ARM	2	ISSUED WITH ADDENDUM #3	OCT 19/22	ARM



DESIGN	DATE	BY
DESIGNED	MJB	
CHECKED	ARM	
DRAWN	MJB	
CHECKED	ARM	
APPROVED	ARM	



SPB DEVELOPMENT INC. (METRIC HOMES) SUBDIVISION - BLOCK 123
 950 TERRY FOX DRIVE

DRAWING NAME: GENERAL PLAN OF SERVICES BLOCK 123

PROJECT No.: 110037
 REV: 110037-GP123

DATE: 2026
 PLAN NUMBER: 19360

#19360