

1400 COLDREY AVENUE TREE CONSERVATION REPORT



JUNE 9, 2025
SUBMITTED TO:
BOARD OF DIRECTORS
KEHILLAT BETH ISRAEL CONGREGATION

OTTAWA TREE REPORTS
WWW.OTTAWATREEREPORTS.COM

Table of Contents

Introduction 3

 Contact Information 3

 Policy Framework 4

 Documents Reviewed 4

Existing Conditions 6

 Tree Inventory and Assessment Methodology 6

 Tree Information 6

 Distinctive Trees 6

 Species at Risk 6

 Impacted Trees 6

 Tree Protection Details 10

Tree Compensation and Replanting 12

Summary 12

 Mitigation Measures 13

APPENDIX A 15

 Tree Information Table 16

 Stand Information Tables 18

 Tree Identification Plan 24

APPENDIX B 25

 Tree Protection Plan 26

APPENDIX C 27

Introduction

Ottawa Tree Reports (OTR) was retained by Kehillat Beth Israel Congregation to provide a Tree Conservation Report (TCR) in support of a Site Control application for lands owned by the Kehillat Beth Israel Congregation located at 1400 Coldrey Avenue Road in Ottawa, Ontario (Figure 1). This report identifies and describes trees the subject property in advance of proposed tree removal and construction related activities. This TCR has been prepared following the City of Ottawa's guidelines (2020a).

In the City of Ottawa, a TCR is required for all Plans of Subdivision, Site Plan Control Applications, Common Elements Condominium Applications, and Vacant Land Condominium Applications where there is a tree of 10 cm in diameter at breast height (DBH) or greater on the site and/or if there is a tree on an adjacent site that has a critical root zone (CRZ) extending onto the development site. A "tree" is defined as any species of woody perennial plant, including its root system, which has reached or can reach a minimum height of at least 450 cm at physiological maturity. The CRZ is calculated as DBH x 10 cm.

In accordance to the City of Ottawa's Tree Protection By-law (No. 2020-340), the removal of trees on subject property cannot occur until written approval is granted from the City of Ottawa. The approved TCR is required for the approval of tree removal on the subject property; a copy of this TCR must be available on-site during tree removal, grading, construction, or any other site alteration activities.

The work plan for this Tree Conservation Report included the following:

- Prepare inventory of the tree resources on the subject property and within vicinity of impact on adjacent neighbouring property;
- Evaluate potential tree protection and preservation opportunities based on proposed site plans; and
- Document the findings in a Tree Conservation Report.

Contact Information

Owner Information:

Name: Kehillat Beth Israel Congregation
C/O Eric Weiner
Phone #: 613-222-5962
Email: ehw1601@gmail.com

Arborist Information:

Name: Scott Petrie
Phone #: 613-204-8687
Email: info@ottawatreeereports.com

Policy Framework

The subject property is subject to the provisions of the City of Ottawa's Tree Protection By-law 2020-340. The purpose of this by-law is for the protection of municipal trees and municipal natural areas in the City of Ottawa and trees on private property in the urban area of the City of Ottawa.

City of Ottawa tree protection requirements were applied during the Tree Conservation Report planning process. These protection requirements indicate a minimum distance at which the critical root zone (CRZ) must be protected.

The CRZ distances allow for maximum development potential while providing sufficient space to ensure the tree(s) are not subject to any long term adverse due to the impacts of development. In instances where the CRZ will be encroached upon and impacted, an Adjusted Tree Protection Zone (Adj TPZ) has been calculated based upon impacts to the CRZ; further mitigation measure may be required to ensure there are no adverse long-term impacts to the tree(s).

Documents Reviewed

- Robinson Consultants 24060 Base – March 2025
- Robinson Consultants 24060 GR1 Grading Plan – June 2025
- Robinson Consultants Proposed Fencing – March 2025
- IDEA Site Plan – April 2025
- Annis, O'Sullivan, Vollebeckk Plan of Survey – May 2025
- GeoOttawa Imagery

Site Information

The site is approximately 1.79 ha and is zoned as I1A – Minor Institutional Zone. This zoning designation is intended for institutional development with a wide range of uses. Land cover on the site is dominated by building envelope, grassed areas, parking lot, individual trees and approximately 0.2 ha of stands of trees (cluster/ hedgerows) located along the eastern property line and southern edges of the site.

The site is bordered by: mixed residential lands to the south east and west and commercial/mixed use zoning to the north.

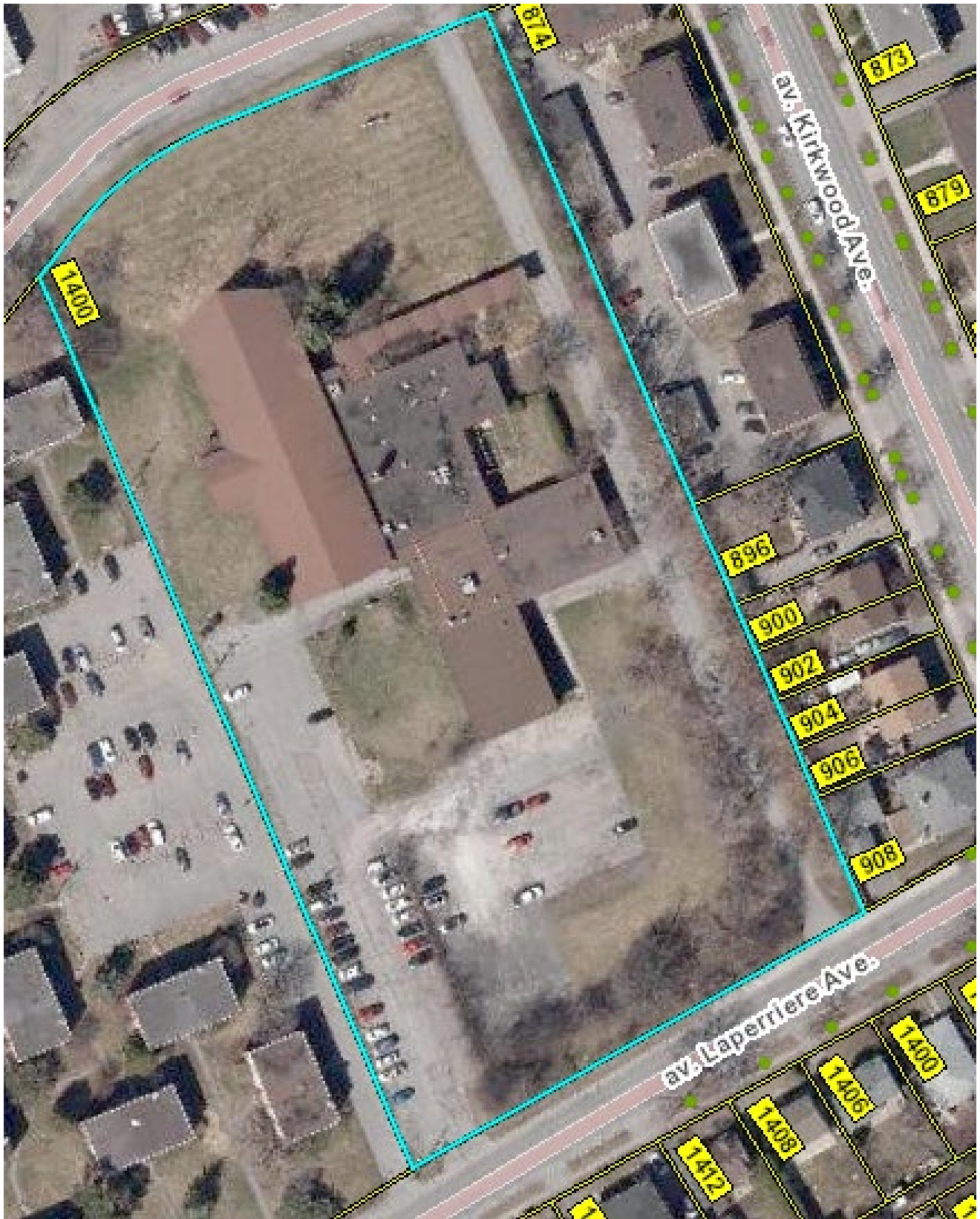


Figure 1 – 1400 Coldrey Avenue

Existing Conditions

Tree Inventory and Assessment Methodology

All trees on the subject property and those that may be impacted on adjacent properties were inventoried and assessed, with specific focus on trees that are protected and thus subject to the provisions of the City of Ottawa’s Tree Protection By-law 2020-340.

Tree inspections were limited to visual, on-ground examinations. No boring, probing, or sonic tomography was employed during the assessments. Any data and information collected is based on the conditions at the time of inspection.

Tree Information

A detailed inventory of the trees and field assessments were conducted on March 27 and June 6, 2025 the results of the assessment are provided in the Tree Information Tables found in Appendix “A”.

Subject Trees

A total of 156 trees were inventoried, 37 individual standing trees and 3 stands (119) of trees were inventoried and assessed for the project. It was determined that 67 protected trees (29 individual and 38 in Stand 1) will be impacted by the proposed works. Please refer to the table below for the number of trees, number of impacted trees, and the distribution of protection status and type of impact.

Table 1 – Tree Information Dashboard

# of Trees Inventoried	# of Protected Trees	# Protected Tree Impacts	Protected Tree Removals		Protected Tree Injuries	
			# of City Trees	# of Private Trees	# of City Trees	# of Private Trees
156	152	67	0	67	0	0

Distinctive Trees

47 trees were identified on the subject property (Appendix A) with a DBH ≥ 30 cm.

Species at Risk

No species at risk were observed or inventoried during the dates of field assessment.

Impacted Trees

In total, 67 protected trees are to be impacted and will require removal to facilitate the proposed works; the impacted trees will be further discussed below (See Table 2 & 3), based on their location and proximity to proposed work, and the nature of impact to be incurred.

Table 2 – Tree Impact Table

Tree #	Species		DBH (cm)	Ownership	By-Law Protected	Condition			Arborist Recommendations
						(Poor/Fair/Good)			
	Common	Botanical				Trunk	Canopy	Canopy	
						Integrity	Structure	Vigour	
1	Red Maple	<i>Acer rubrum</i>	37	Private	Yes	G	P	P	Removal
2	Ginkgo	<i>Ginkgo biloba</i>	42	Private	Yes	G	F	G	Removal
3	Ginkgo	<i>Ginkgo biloba</i>	39	Private	Yes	G	G	G	Removal
4	Ivory Silk Tree Lilac	<i>Syringa reticulata</i> 'Ivory Silk'	37	Private	Yes	P	P	F	Removal
5	White Spruce	<i>Picea glauca</i>	40	Private	Yes	G	G	G	Removal
6	White Spruce	<i>Picea glauca</i>	56	Private	Yes	G	G	G	Removal
7	White Spruce	<i>Picea glauca</i>	43	Private	Yes	G	G	G	Removal
8	Ivory Silk Tree Lilac	<i>Syringa reticulata</i> 'Ivory Silk'	35	Private	Yes	P	P	F	Removal
10	Crabapple	<i>Malus 'spp</i>	21	Private	Yes	P	F	F	Removal
11	Crabapple	<i>Malus 'spp</i>	34	Private	Yes	P	P	P	Removal
12	Crabapple	<i>Malus 'spp</i>	41	Private	Yes	P	F	F	Removal
13	Crabapple	<i>Malus 'spp</i>	42	Private	Yes	P	P	P	Removal
14	Sugar Maple	<i>Acer saccharum</i>	32	Private	Yes	G	G	G	Removal
18	Ivory Silk Tree Lilac	<i>Syringa reticulata</i> 'Ivory Silk'	64	Private	Yes	P	F	G	Removal
19	Ivory Silk Tree Lilac	<i>Syringa reticulata</i> 'Ivory Silk'	38	Private	Yes	F	F	G	Removal
20	Ivory Silk Tree Lilac	<i>Syringa reticulata</i> 'Ivory Silk'	48	Private	Yes	F	F	G	Removal
21	Crabapple	<i>Malus spp</i>	37	Private	Yes	P	P	F	Removal
22	Norway Maple	<i>Acer platanoides</i>	25	Private	Yes	P	P	F	Removal
23	Manitoba Maple	<i>Acer negundo</i>	18	Private	Yes	P	P	F	Removal
24	Manitoba Maple	<i>Acer negundo</i>	18	Private	Yes	P	P	F	Removal
25	Manitoba Maple	<i>Acer negundo</i>	18	Private	Yes	P	P	F	Removal

26	Manitoba Maple	<i>Acer negundo</i>	42	Private	Yes	P	F	F	Removal
27	White Ash	<i>Fraxinus americana</i>	11	Private	Yes	P	P	P	Removal
28	Rock Elm	<i>Ulmus thomasii</i>	11	Private	Yes	F	F	F	Removal
29	Manitoba Maple	<i>Acer negundo</i>	11	Private	Yes	F	F	F	Removal
30	Manitoba Maple	<i>Acer negundo</i>	41	Private	Yes	P	F	F	Removal
31	Rock Elm	<i>Ulmus thomasii</i>	36	Private	Yes	F	F	F	Removal
32	Crimson King Maple	<i>Acer platanoides</i> 'Crimson King'	12	Private	Yes	F	F	F	Removal
37	Colorado Blue Spruce	<i>Picea pungens</i> 'Glauca'	59	Private	Yes	G	G	G	Removal

Tree 1 is a 37 cm Red Maple *Acer rubrum*, completely located on the subject property, with a CRZ of 3.7m, it is recommended to be removed due to the installation of the exit of the new private approach.

Tree 2 is a 42 cm Gingko *Gingko biloba*, completely located on the subject property, with a CRZ of 4.2m, it is recommended to be removed due to the installation of the proposed driveway.

Tree 3 is a 39 cm Gingko *Gingko biloba*, completely located on the subject property, with a CRZ of 3.9m, it is recommended to be removed due to the installation of the proposed sidewalk.

Tree 4 is a 37 cm multi-stem Japanese Lilac *Syringa reticulata*, completely located on the subject property, with a CRZ of 3.7m, it is recommended to be removed due to the installation of the exit of the proposed sidewalk.

Tree 5 is a 40 cm White Spruce *Picea glauca*, completely located on the subject property, with a CRZ of 4.0m, it is recommended to be removed due to the installation of the exit of the proposed drop off lane.

Tree 6 is a 56 cm White Spruce *Picea glauca*, completely located on the subject property, with a CRZ of 5.6m, it is recommended to be removed due to the installation of the proposed sidewalk.

Tree 7 is a 43 cm White Spruce *Picea glauca*, completely located on the subject property, with a CRZ of 4.3m, it is recommended to be removed due to the installation of the exit of the proposed drop off lane.

Tree 8 is a 35 cm multi-stem Japanese Lilac *Syringa reticulata*, completely located on the subject property, with a CRZ of 3.5m, it is recommended to be removed due to the proposed drop off lane/lay-by.

Tree 10 is a 21 cm Flowering Crabapple *Malus spp.*, completely located on the subject property, with a CRZ of 2.1m, it is recommended to be removed due to the proposed drop off lane/lay-by.

Tree 11 is a 34 cm multi-stem Flowering Crabapple *Malus spp.*, completely located on the subject property, with a CRZ of 3.4m, it is recommended to be removed due to the proposed drop off lane/lay-by.

Tree 12 is a 41 cm multi-stem Flowering Crabapple *Malus spp.*, completely located on the subject property, with a CRZ of 4.1m, it is recommended to be removed due to the proposed drop off lane/lay-by.

Tree 13 is a 42 cm is a Flowering Crabapple *Malus spp.*, completely located on the subject property, with a CRZ of 4.2m, it is recommended to be removed due to its poor structural condition/poor health and due to the proposed drop off lane/lay-by.

Tree 14 is a 32cm Sugar Maple *Acer saccharum*, completely located on the subject property, with a CRZ of 3.2, it is recommended to be removed due to the excavation, curb installation for the new parking lot.

Tree 18 is a 64 cm Japanese Lilac *Syringa reticulata*, completely located on the subject property, with a CRZ of 6.4m, it is recommended to be removed due to the proposed new parking space

Tree 19 is a 38 cm multi-stem Japanese Lilac *Syringa reticulata*, completely located on the subject property, with a CRZ of 3.8m, it is recommended to be removed due to the proposed parking space.

Tree 20 is a 48 cm Japanese Lilac *Syringa reticulata*, completely located on the subject property, with a CRZ of 4.8m, it is recommended to be removed due to the proposed parking space/sidewalk

Tree 21 is a 37 cm Flowering Crabapple *Malus spp.*, completely located on the subject property, with a CRZ of 3.7m, it is recommended to be removed due to the proposed sidewalk.

Tree 22 is a 25 cm Norway Maple *Acer platanoides*, completely located on the subject property, with a CRZ of 2.5m, it is recommended to be removed due to the proposed new roadway

Tree 23 is a 18 cm Manitoba Maple *Acer negundo*, completely located on the subject property, with a CRZ of 1.8m, it is recommended to be removed due to the new roadway.

Tree 24 is a 18 cm Manitoba Maple *Acer negundo*, completely located on the subject property, with a CRZ of 1.8m, it is recommended to be removed due to the new roadway.

Tree 25 is a 18 cm Manitoba Maple *Acer negundo*, completely located on the subject property, with a CRZ of 1.8m, it is recommended to be removed due to the new roadway.

Tree 26 is a 42 cm Manitoba Maple *Acer negundo*, completely located on the subject property, with a CRZ of 4.2m, it is recommended to be removed due to the proposed new roadway.

Tree 27 is a 11 cm White Ash *Fraxinus americana*, completely located on the subject property, with a CRZ of 1.1m, it is recommended to be removed due to the proposed new roadway.

Tree 28 is a 11 cm Rock Elm *Ulmus thomasii*, completely located on the subject property, with a CRZ of 1.1m, it is recommended to be removed due to the proposed new roadway.

Tree 29 is a 11 cm Manitoba Maple *Acer negundo*, completely located on the subject property, with a CRZ of 1.1m, it is recommended to be removed due to the proposed new roadway.

Tree 30 is a 41 cm multi-stem Manitoba Maple *Acer negundo*, completely located on the subject property, with a CRZ of 4.1m, it is recommended to be removed due to the proposed excavation and grading activities

Tree 31 is a 36cm Rock Elm *Ulmus thomasii*, completely located on the subject property, with a CRZ of 3.6m, it is recommended to be removed due to the proposed parking spot.

Tree 32 is a 32cm Crimson King Norway Maple *Acer plantanoides*, completely located on the subject property, with a CRZ of 3.2, it is recommended to be removed due to the proposed parking spot.

Tree 37 is a 59 cm Blue Spruce *Picea pungens glauca*, completely located on the subject property, with a CRZ of 5.9m, it is recommended to be removed due to the proposed sidewalk and grade change of 0.83m

Table 3 – Stand Impact Table

Stand #	Species Composition	# of Trees	Avg DBH (cm)	Ownership	By-Law Protected	Condition	Arborist Recommendations
						(Poor/Fair/Good)	
1	Norway Maple 59%, Manitoba Maple 25%	38	20	Private	Yes	Poor	Removal

Stand 1 is located along the eastern side of the subject property, between the access road and the property line; it’s approximately 0.07ha in size, with 38 of the 42 inventoried trees considered protected. The stand is dominated by Norway and Manitoba Maple, with an average DBH of 19cm. The understory is dominated by buckthorn, and pole wood Manitoba and Norway Maple as well. The majority of the canopy trees are in proximity to overhead energized utilities and have been subject to utility clearance pruning throughout their lifecycle, resulting in poor structure, and death. There are 5 protected trees greater than 30 cm in this stand. This stand will require removal to facilitate the installation of security fencing, curbing and parking spaces

Tree Protection Details

Tree protection measures have been recommended for 7 individual trees and for Stands 2 and 3.

Tree protection measures are recommended to be installed as outlined in the City of Ottawa’s Tree Protection Specification in Appendix “B”. Tree protection measures are recommended to be installed prior to the commencement of the proposed works to ensure tree resources designated for retention and protection are not impacted by the proposed works.

The tree protection measures shall be maintained throughout the duration of the proposed works until final grading and landscaping works are completed.

Table 4 – Tree Protection Table

Tree #	Species		DBH (cm)	Ownership	By-Law Protected	Arborist Recommendations	CRZ (m)	CRZ Impacted	Recommended Excavation Limit (m)	Adj TPZ (m)	Specification Recommendations	Notes
	Common	Botanical										
9	Manitoba Maple	<i>Acer negundo</i>	24	Private	No	Retain	No	No	NA	NA	Plywood	See Tree Protection Plan
15	Amur Maple	<i>Acer ginnala</i>	12	Private	Yes	Retain	No	No	NA	NA	Plywood	See Tree Protection Plan
16	Amur Maple	<i>Acer ginnala</i>	14	Private	Yes	Retain	No	No	NA	NA	Plywood	See Tree Protection Plan
17	Amur Maple	<i>Acer ginnala</i>	18	Private	Yes	Retain	No	No	NA	NA	Plywood	See Tree Protection Plan
33	Chinese Elm	<i>Ulmus pumila</i>	35	Private	Yes	Retain	No	No	NA	NA	Snow Fence/Moduloc	See Tree Protection Plan
34	Norway Spruce	<i>Picea abies</i>	16	Private	Yes	Retain	No	No	NA	NA	Snow Fence/Moduloc	See Tree Protection Plan
35	Horse Chestnut	<i>Aesculus hippocastanum</i>	14	Private	Yes	Retain	No	No	NA	NA	Snow Fence/Moduloc	See Tree Protection Plan

Tree 9 is a 24 cm Manitoba Maple *Acer negundo*, tree protection measures shall be installed north of this tree parallel to the covered concrete walkway/landscape interface.

Trees 15,16,17 are all Amur Maple *Acer ginalla* and tree protection measures shall be installed at the northern limit of **Tree 15** parallel to the covered concrete walkway/landscape interface, then contiguously south the southerly limit of **Tree 17** parallel the concrete walkway interface.

Tree 33 is a 35cm multi-stem Chinese Elm *Ulmus pumila*, tree protection measures are recommended to be installed at the CRZ limit.

Tree 34 is a 16cm Norway Spruce *Picea abies*, tree protection measures are recommended to be installed at the CRZ limit.

Tree 35 is a 14cm multi-stem Horse Chestnut *Aesculus hippocastanum*, tree protection measures are recommended to be installed at the CRZ limit.

Table 5 – Stand Impact Table

Stand #	Species Composition	Avg DBH (cm)	Ownership	By-Law Protected	Arborist Recommendations	Specification Recommendations	Notes
2	Norway/Manitoba Maple	10	Private	Yes	Retain and Protect	Moduloc	See Tree Protection Plan
3	Norway/Manitoba Maple	16	Private	Yes	Retain and Protect	Moduloc	See Tree Protection Plan

Stand 2 tree protection measures shall be installed at the northern CRZ limit of Tree 79 (3.6m) perpendicular from the eastern property line to the roadway edge, then continue for approximately 44m to the southerly limit of the stand.

Stand 3 tree protection measures shall be installed along exterior eastern side of Stand 3 from Laperriere north (along the roadway edge) to the northern limit of Tree 117 (3.8m), then proceed west for approximately 6-7m, then south at the vegetation/grassed area limit for 20m, then west along the northern vegetation/grassed area limit for 40m to the gravel parking area.

Tree Compensation and Replanting

Compensation will be required to mitigate the loss of protected trees, considering the proposed works are not development or infill related, trees are required to be compensated at a 1:1 ratio. A total of 67 trees are recommended to be removed, therefore 67 trees are required to be planted or a combination of tree planting and cash in lieu is required.

Summary

Ottawa Tree Reports (OTR) was retained by Kehillat Beth Israel Congregation to provide a Tree Conservation Report (TCR) in support of a Site Control application for lands owned by the Kehillat Beth Israel Congregation located at 1400 Coldrey Avenue Road in Ottawa, Ontario.

The findings of the tree inventory indicate a total:

- 152 protected trees on the subject property
- 37 Individual trees and 3 Stands of trees
- A total of 67 protected trees will be required to be removed to facilitate the proposed works
 - 29 individual protected trees and 1 Stand of trees (38)
- 67 trees are required to be planted to mitigate the loss of the trees

Mitigation Measures

Site Preparation and Construction

The following mitigation measures must be applied during site preparation and construction:

- Tree removal on the property should be limited to that which is necessary to accommodate construction.
- Tree and vegetative removal will not take place during sensitive times of the year for wildlife (breeding season; early spring throughout summer) unless mitigation measures are implemented and/or the habitat has been inspected by a qualified Biologist.

Recommended Construction Measures

The following recommendations are suggested to minimize impacts to trees identified for protection. Refer to Tree Protection Drawing in Appendix “B” for additional tree preservation plan notes and the tree protection fence details.

- Tree protection measures shall be installed prior to commencement of construction to ensure the trees identified for preservation and protection are not impacted by the proposed works.
- Tree protection barriers and fencing should be erected at locations prescribed on Tree Protection Plans in accordance to the Tree Protection Specification in Appendix “B”.
- Throughout the complete duration of the project the Contractor shall ensure that all equipment stays within the confines of the work area so as not to disrupt the CRZ of any tree. The storage of equipment and vehicles around any trees within the tree impact assessment area is prohibited.
- The Contractor shall remove all excavated material immediately and not place it near the CRZ of trees for any length of time. This also applies to imported material, *i.e.* topsoil, granulars, trench boxes, or any construction related materials.
- The Contractor shall not store fuel within the dripline of any tree, and exhaust fumes from all equipment must NOT be directed towards any tree’s canopy.
- The Contractor shall not discharge any substance within the CRZ of any tree.
- The Contractor shall take all steps necessary to avoid mechanical damage when operating raised dump boxes or large excavating equipment in proximity to trees which overhang the construction corridor and trench excavation area
- Branches and roots that extend past prescribed critical root zone and/or adjusted tree protection zones that require pruning must be pruned by a qualified Arborist or other tree professional. All pruning of tree roots and branches must be in accordance with good arboricultural practices.

- All exposed roots of trees that are recommended to be retained should be covered by a minimum of 5cm of firm soil within 24 hours of exposure.
- Site visits, pre and during construction is recommended by Ottawa Tree Reports to ensure proper utilization of tree protection barriers.

Recommended Post Construction Measures

The following recommendations are suggested to minimize the impacts to trees that may be injured during the course of construction.

- All Trees should be inspected for damage incurred during construction.
- A post construction visual tree assessment is required for all trees injured (damaged) as a result of the construction works to ensure appropriate remedial measures are implemented.
- All post construction remedial tree works, shall be performed by a qualified Arborist or other tree professional in accordance with good arboricultural practices.
- For trees that have had work performed within their CRZ, a post construction monitoring program is recommended to be performed on an annual basis for 2 years.

Construction Schedule

At the date of this report, the construction schedule and thus the timing of tree removals is unknown, as that the Site Control Application process has not been completed, therefore municipal approvals and consent has not been provided. It is the opinion of this firm that as soon as municipal approvals and permits haven been provided that tree removal and construction related activities will commence immediately to address the sites security concerns.

This report was prepared for the exclusive use of Kehillat Beth Israel Congregation, and may be distributed only by Kehillat Beth Israel Congregation. Questions related to the data and interpretation can be addressed to the undersigned.

Respectfully Submitted,

Scott Petrie

**Scott Petrie, Dip EMT, EDDM
Ottawa Tree Reports**

APPENDIX A

Tree Information Table

Table 6 – Tree Information Table

Tree #	Species		DBH (cm)	Ownership	By-Law Protected	Condition			Arborist Recommendations	Tree Planting Required	CRZ (m)	CRZ Impacted	Rec Excavation Limit (m)	Adj TPZ (m)	Specification Recommendations	Notes
	Common	Botanical				(Poor/Fair/Good)										
						Trunk	Canopy	Canopy								
						Integrity	Structure	Vigour								
1	Red Maple	<i>Acer rubrum</i>	37	Private	Yes	G	P	P	Removal	Yes	3.7	Yes	NA	NA		Proposed driveway exit
2	Ginkgo	<i>Ginkgo biloba</i>	42	Private	Yes	G	F	G	Removal	Yes	4.2	Yes	NA	NA		Proposed driveway
3	Ginkgo	<i>Ginkgo biloba</i>	39	Private	Yes	G	G	G	Removal	Yes	3.9	Yes	NA	NA		Proposed sidewalk
4	Ivory Silk Tree Lilac	<i>Syringa reticulata 'Ivory Silk'</i>	37	Private	Yes	P	P	F	Removal	Yes	3.7	Yes	NA	NA		multi stem cross sectional dbh calculation, proposed sidewalk
5	White Spruce	<i>Picea glauca</i>	40	Private	Yes	G	G	G	Removal	Yes	4	Yes	NA	NA		Proposed drop off lane
6	White Spruce	<i>Picea glauca</i>	56	Private	Yes	G	G	G	Removal	Yes	5.6	Yes	NA	NA		Proposed drop off lane
7	White Spruce	<i>Picea glauca</i>	43	Private	Yes	G	G	G	Removal	Yes	4.3	Yes	NA	NA		Proposed drop off lane
8	Ivory Silk Tree Lilac	<i>Syringa reticulata 'Ivory Silk'</i>	35	Private	Yes	P	P	F	Removal	Yes	3.5	Yes	NA	NA		multi stem cross sectional dbh calculation, proposed sidewalk
9	Manitoba Maple	<i>Acer negundo</i>	24	Private	No	P	F	F	Retain	No	2.4	No	NA	NA	Plywood	
10	Crabapple	<i>Malus 'spp</i>	21	Private	Yes	P	F	F	Removal	Yes	2.1	Yes	NA	NA		drop off lane
11	Crabapple	<i>Malus 'spp</i>	34	Private	Yes	P	P	P	Removal	Yes	3.4	Yes	NA	NA		
12	Crabapple	<i>Malus 'spp</i>	41	Private	Yes	P	F	F	Removal	Yes	4.1	Yes	NA	NA		multi stem cross sectional dbh calculation, parking space
13	Crabapple	<i>Malus 'spp</i>	42	Private	Yes	P	P	P	Removal	Yes	4.2	Yes	NA	NA		condition warrants removal, drop off lane
14	Sugar Maple	<i>Acer saccharum</i>	32	Private	Yes	G	G	G	Removal	Yes	3.2	Yes	NA	NA		
15	Amur Maple	<i>Acer ginnala</i>	12	Private	Yes	P	P	P	Retain	No	1.2	No	NA	NA	Plywood	
16	Amur Maple	<i>Acer ginnala</i>	14	Private	Yes	P	F	F	Retain	No	1.4	No	NA	NA	Plywood	
17	Amur Maple	<i>Acer ginnala</i>	18	Private	Yes	P	F	F	Retain	No	1.8	No	NA	NA	Plywood	
18	Ivory Silk Tree Lilac	<i>Syringa reticulata 'Ivory Silk'</i>	64	Private	Yes	P	F	G	Removal	Yes	6.4	Yes	NA	NA		Proposed accessible parking space
19	Ivory Silk Tree Lilac	<i>Syringa reticulata 'Ivory Silk'</i>	38	Private	Yes	F	F	G	Removal	Yes	3.8	Yes	NA	NA		Proposed accessible parking space
20	Ivory Silk Tree Lilac	<i>Syringa reticulata 'Ivory Silk'</i>	48	Private	Yes	P	F	G	Removal	Yes	6.4	Yes	NA	NA		Proposed accessible parking space
21	Profusion Crabapple	<i>Malus 'Profusion'</i>	37	Private	Yes	P	P	F	Removal	Yes	3.7	Yes	NA	NA		proposed sidewalk
22	Norway Maple	<i>Acer platanoides</i>	25	Private	Yes	P	P	F	Removal	Yes	2.5	Yes	NA	NA		multi stem cross sectional dbh calculation, proposed driveway

23	Manitoba Maple	<i>Acer negundo</i>	18	Private	Yes	P	F	F	Removal	Yes	1.8	Yes	NA	NA		Proposed road
24	Manitoba Maple	<i>Acer negundo</i>	18	Private	Yes	P	F	F	Removal	Yes	1.8	Yes	NA	NA		Proposed road
25	Manitoba Maple	<i>Acer negundo</i>	18	Private	Yes	P	F	F	Removal	Yes	1.8	Yes	NA	NA		Proposed road
26	Manitoba Maple	<i>Acer negundo</i>	42	Private	Yes	P	F	F	Removal	Yes	4.2	Yes	NA	NA		multi stem cross sectional dbh calculation, proposed road
27	White Ash	<i>Fraxinus americana</i>	11	Private	Yes	P	P	P	Removal	Yes	1.1	Yes	NA	NA		proposed road
28	Rock Elm	<i>Ulmus thomasi</i>	11	Private	Yes	F	F	F	Removal	Yes	1.1	Yes	NA	NA		proposed road
29	Manitoba Maple	<i>Acer negundo</i>	11	Private	Yes	F	F	F	Removal	Yes	1.1	Yes	NA	NA		proposed road
30	Manitoba Maple	<i>Acer negundo</i>	41	Private	Yes	P	F	F	Removal	Yes	4.1	Yes	NA	NA		Multi stem, failed stem on grass, excavation for grading
31	Rock Elm	<i>Ulmus thomasi</i>	36	Private	Yes	F	F	F	Removal	Yes	3.6	Yes	NA	NA		parking space
32	Crimson King Maple	<i>Acer platanoides 'Crimson King'</i>	12	Private	Yes	F	F	F	Removal	Yes	1.2	Yes	NA	NA		parking space
33	Chinese Elm	<i>Ulmus pumila</i>	35	Private	Yes	F	F	F	Retain	No	NA	NA	NA	NA	Snow fence	multi stem cross sectional dbh calculation
34	Norway Spruce	<i>Picea abies</i>	16	Private	Yes	G	G	G	Retain	No	NA	NA	NA	NA	Snow fence	
35	Horse Chestnut	<i>Aesculus hippocastanum</i>	14	Private	Yes	P	F	F	Retain	No	NA	NA	NA	NA	Snow fence	
36	White Ash	<i>Fraxinus americana</i>	12	Private	No	F	F	F	Removal	No	1.2	Yes	NA	NA		Eab dead/parking space
37	Colorado Blue Spruce	<i>Picea pungens 'Glauca'</i>	59	Private	Yes	G	G	G	Removal	Yes	5.9	Yes	NA	NA		proposed sidewalk, grade change drop of .83m

Stand Information Tables

Table 7 – Stand Summary Table

Stand #	Species Composition						Ownership	Area (Ha)	# of Trees	# By-Law Protected Trees	Avg DBH (cm)	Arborist Recommendations	Tree Planting Required	Notes
	Dominant Specie			Secondary Specie										
	Common	Botanical	%	Common	Botanical	%								
1	Norway Maple	<i>Acer platanioides</i>	59	Manitoba Maple	<i>Acer negundo</i>	25	Private	0.07	42	38	19	Removal	Yes	Stand 1 is located along the eastern side of the subject property. The stand is dominated by Manitoba and Norway Maple, with an average DBH of 22cm. The understory is dominated by buckthorn, and pole wood Manitoba and Norway Maple. There are 6 trees greater than 30 cm in this stand. This stand will require removal to facilitate the installation of security fencing, curbing and parking spaces
2	Norway Maple	<i>Acer platanioides</i>	84	Manitoba Maple	<i>Acer negundo</i>	10	Private	0.03	38	38	15	Retain	No	Stand 2 is located along the eastern property south of the limits of construction. The stand is dominated by Norway with an average DBH of 16 the proposed works will not impact these trees.
3	Manitoba Maple	<i>Acer negundo</i>	48	Norway Maple	<i>Acer platanioides</i>	16	Private	0.1	40	40	23	Retain	No	Stand 3 is located at the south end of the property, bordered on the east by the access road, south by Laperriere, north by the gravel parking area and west by the existing parking lot access road.

Table 8 – Stand 1 Tree Information Table

Tree #	Species		DBH (cm)	Ownership	By-Law Protected	Condition			Arborist Recommendations	CRZ (m)	CRZ Impacted	Rec Excavation Limit (m)	Adj TPZ (m)	Tree Planting Required	Specification Recommendations	Notes
	Common	Botanical				(Poor/Fair/Good)										
						Trunk	Canopy	Canopy								
						Integrity	Structure	Vigour								
38	White Pine	<i>Pinus strobus</i>	37	Private	Yes	P	P	P	Removal	3.7	Yes	NA	NA	Yes	NA	Hydro Topped, Security Fence install, parking space
39	Manitoba Maple	<i>Acer negundo</i>	24	Private	Yes	P	P	P	Removal	2.4	Yes	NA	NA	Yes	NA	Security Fence Install, parking space
40	Red Pine	<i>Pinus resinosa</i>	26	Private	Yes	G	F	F	Removal	2.6	Yes	NA	NA	Yes	NA	Hydro Topped, Fence install, parking space
41	Manitoba Maple	<i>Acer negundo</i>	18	Private	Yes	P	P	F	Removal	1.8	Yes	NA	NA	Yes	NA	Security Fence Install, parking space

42	White Pine	<i>Pinus strobus</i>	34	Private	Yes	Dead	Dead	Dead	Removal	3.4	Yes	NA	NA	No	NA	Dead
43	Manitoba Maple	<i>Acer negundo</i>	18	Private	Yes	P	P	F	Removal	1.8	Yes	NA	NA	Yes	NA	Security Fence Install, parking space
44	Red Pine	<i>Pinus resinosa</i>	36	Private	Yes	P	P	F	Removal	3.6	Yes	NA	NA	No	NA	Security Fence Install, parking space
45	Manitoba Maple	<i>Acer negundo</i>	22	Private	Yes	P	P	F	Removal	2.2	Yes	NA	NA	Yes	NA	Security Fence Install, parking space
46	Norway Maple	<i>Acer platanoides</i>	18	Private	Yes	P	P	F	Removal	1.8	Yes	NA	NA	Yes	NA	Security Fence Install, parking space
47	Norway Maple	<i>Acer platanoides</i>	16	Private	Yes	P	P	F	Removal	1.6	Yes	NA	NA	Yes	NA	Security Fence Install, parking space
48	Norway Maple	<i>Acer platanoides</i>	16	Private	Yes	F	F	F	Removal	1.6	Yes	NA	NA	Yes	NA	Security Fence Install, parking space
49	Norway Maple	<i>Acer platanoides</i>	14	Private	Yes	F	F	F	Removal	1.4	Yes	NA	NA	Yes	NA	Security Fence Install, parking space
50	Norway Maple	<i>Acer platanoides</i>	12	Private	Yes	F	F	F	Removal	1.2	Yes	NA	NA	Yes	NA	Security Fence Install, parking space
51	Norway Maple	<i>Acer platanoides</i>	12	Private	Yes	F	F	F	Removal	1.2	Yes	NA	NA	Yes	NA	Security Fence Install, parking space
52	White Pine	<i>Pinus strobus</i>	22	Private	Yes	P	P	F	Removal	2.2	Yes	NA	NA	Yes	NA	Security Fence Install, parking space
53	Norway Maple	<i>Acer platanoides</i>	16	Private	Yes	P	P	F	Removal	1.6	Yes	NA	NA	Yes	NA	Security Fence Install, parking space
54	Norway Maple	<i>Acer platanoides</i>	12	Private	Yes	P	P	P	Removal	1.2	Yes	NA	NA	Yes	NA	Security Fence Install, parking space
55	Norway Maple	<i>Acer platanoides</i>	22	Private	Yes	P	P	F	Removal	2.2	Yes	NA	NA	Yes	NA	Security Fence Install, parking space
56	Manitoba Maple	<i>Acer negundo</i>	16	Private	Yes	P	P	F	Removal	1.6	Yes	NA	NA	Yes	NA	Security Fence Install, parking space
57	Norway Maple	<i>Acer platanoides</i>	12	Private	Yes	P	P	F	Removal	1.2	Yes	NA	NA	Yes	NA	Security Fence Install, parking space
58	Norway Maple	<i>Acer platanoides</i>	12	Private	Yes	P	P	F	Removal	1.2	Yes	NA	NA	Yes	NA	Security Fence Install, parking space
59	Norway Maple	<i>Acer platanoides</i>	14	Private	Yes	P	P	F	Removal	1.4	Yes	NA	NA	Yes	NA	Security Fence Install, parking space
60	Norway Maple	<i>Acer platanoides</i>	12	Private	Yes	P	P	F	Removal	1.2	Yes	NA	NA	Yes	NA	Security Fence Install, parking space
61	Norway Maple	<i>Acer platanoides</i>	12	Private	Yes	P	P	F	Removal	1.2	Yes	NA	NA	Yes	NA	Security Fence Install, parking space
62	Norway Maple	<i>Acer platanoides</i>	12	Private	Yes	P	P	F	Removal	1.2	Yes	NA	NA	Yes	NA	Security Fence Install, parking space
63	Norway Maple	<i>Acer platanoides</i>	36	Private	Yes	P	P	F	Removal	3.6	Yes	NA	NA	Yes	NA	Security Fence Install, parking space
64	Norway Maple	<i>Acer platanoides</i>	43	Private	Yes	P	P	F	Removal	4.3	Yes	NA	NA	Yes	NA	Security Fence Install, parking space
65	Norway Maple	<i>Acer platanoides</i>	36	Private	Yes	P	P	F	Removal	3.6	Yes	NA	NA	Yes	NA	Security Fence Install, parking space
66	Norway Maple	<i>Acer platanoides</i>	14	Private	Yes	P	P	F	Removal	1.4	Yes	NA	NA	Yes	NA	Security Fence Install, parking space
67	Chinese Elm	<i>Ulmus pumilla</i>	12	Private	Yes	P	P	F	Removal	1.2	Yes	NA	NA	Yes	NA	Security Fence Install, parking space

68	Norway Maple	<i>Acer platanoides</i>	14	Private	Yes	P	P	F	Removal	1.4	Yes	NA	NA	Yes	NA	Security Fence Install, parking space
69	Norway Maple	<i>Acer platanoides</i>	14	Private	Yes	P	P	F	Removal	1.4	Yes	NA	NA	Yes	NA	Security Fence Install, parking space
70	Norway Maple	<i>Acer platanoides</i>	14	Private	Yes	P	P	F	Removal	1.4	Yes	NA	NA	Yes	NA	Security Fence Install, parking space
71	Norway Maple	<i>Acer platanoides</i>	12	Private	Yes	P	P	F	Removal	1.2	Yes	NA	NA	Yes	NA	Security Fence Install, parking space
72	Norway Maple	<i>Acer platanoides</i>	14	Private	Yes	P	P	F	Removal	1.4	Yes	NA	NA	Yes	NA	Security Fence Install, parking space
73	Norway Maple	<i>Acer platanoides</i>	16	Private	Yes	P	P	F	Removal	1.6	Yes	NA	NA	Yes	NA	Security Fence Install, parking space
74	White Ash	<i>Fraxinus americana</i>	16	Private	Yes	Dead	Dead	Dead	Removal	1.6	Yes	NA	NA	No	NA	EAB exempt
75	White Ash	<i>Fraxinus americana</i>	20	Private	Yes	Dead	Dead	Dead	Removal	2	Yes	NA	NA	No	NA	EAB exempt
76	Manitoba Maple	<i>Acer negundo</i>	18	Private	Yes	P	P	P	Removal	1.8	Yes	NA	NA	Yes	NA	Security Fence Install, parking space
77	Manitoba Maple	<i>Acer negundo</i>	22	Private	Yes	P	P	P	Removal	2.2	Yes	NA	NA	Yes	NA	Security Fence Install, parking space
78	Manitoba Maple	<i>Acer negundo</i>	16	Private	Yes	P	P	F	Removal	1.6	Yes	NA	NA	Yes	NA	Security Fence Install, parking space
79	Manitoba Maple	<i>Acer negundo</i>	16	Private	Yes	P	P	F	Removal	1.6	Yes	NA	NA	Yes	NA	Security Fence Install, parking space

Table 9 – Stand 2 Tree Information

Tree #	Species		DBH (cm)	Ownership	By-Law Protected	Condition			Arborist Recommendations	CRZ (m)	CRZ Impacted	Rec Excavation Limit (m)	Adj TPZ (m)	Tree Planting Required	Specification Recommendations	Notes
	Common	Botanical				(Poor/Fair/Good)										
						Trunk	Canopy	Canopy								
						Integrity	Structure	Vigour								
79	Manitoba Maple	<i>Acer negundo</i>	36	Private	Yes	F	F	F	Retain	3.6	No	NA	NA	No	Moduloc	See Tree Protection Plan
80	Norway Maple	<i>Acer platanoides</i>	10	Private	Yes	F	F	F	Retain	1	No	NA	NA	No	Moduloc	See Tree Protection Plan
81	Norway Maple	<i>Acer platanoides</i>	10	Private	Yes	F	F	F	Retain	1	No	NA	NA	No	Moduloc	See Tree Protection Plan
82	Norway Maple	<i>Acer platanoides</i>	10	Private	Yes	F	F	F	Retain	1	No	NA	NA	No	Moduloc	See Tree Protection Plan
83	Norway Maple	<i>Acer platanoides</i>	10	Private	No	F	F	F	Retain	1	No	NA	NA	No	Moduloc	See Tree Protection Plan
84	Norway Maple	<i>Acer platanoides</i>	10	Private	Yes	F	F	F	Retain	1	No	NA	NA	No	Moduloc	See Tree Protection Plan
85	Norway Maple	<i>Acer platanoides</i>	10	Private	Yes	F	F	F	Retain	1	No	NA	NA	No	Moduloc	See Tree Protection Plan
86	Norway Maple	<i>Acer platanoides</i>	10	Private	No	F	F	F	Retain	1	No	NA	NA	No	Moduloc	See Tree Protection Plan

87	Norway Maple	<i>Acer platanoides</i>	10	Private	No	F	F	F	Retain	1	No	NA	NA	No	Moduloc	See Tree Protection Plan
88	Norway Maple	<i>Acer platanoides</i>	10	Private	No	F	F	F	Retain	1	No	NA	NA	No	Moduloc	See Tree Protection Plan
89	Norway Maple	<i>Acer platanoides</i>	10	Private	No	F	F	F	Retain	1	No	NA	NA	No	Moduloc	See Tree Protection Plan
90	Norway Maple	<i>Acer platanoides</i>	10	Private	No	F	F	F	Retain	1	No	NA	NA	No	Moduloc	See Tree Protection Plan
91	Norway Maple	<i>Acer platanoides</i>	12	Private	No	F	F	F	Retain	1.2	No	NA	NA	No	Moduloc	See Tree Protection Plan
92	Norway Maple	<i>Acer platanoides</i>	12	Private	Yes	F	F	F	Retain	1.2	No	NA	NA	No	Moduloc	See Tree Protection Plan
93	Norway Maple	<i>Acer platanoides</i>	60	Private	Yes	F	F	F	Retain	6	No	NA	NA	No	Moduloc	See Tree Protection Plan
94	Norway Maple	<i>Acer platanoides</i>	12	Private	Yes	F	F	F	Retain	1.2	No	NA	NA	No	Moduloc	See Tree Protection Plan
95	Norway Maple	<i>Acer platanoides</i>	12	Private	Yes	F	F	F	Retain	1.2	No	NA	NA	No	Moduloc	See Tree Protection Plan
96	Norway Maple	<i>Acer platanoides</i>	10	Private	Yes	F	F	F	Retain	1	No	NA	NA	No	Moduloc	See Tree Protection Plan
97	Norway Maple	<i>Acer platanoides</i>	10	Private	Yes	F	F	F	Retain	1	No	NA	NA	No	Moduloc	See Tree Protection Plan
98	Norway Maple	<i>Acer platanoides</i>	10	Private	Yes	F	F	F	Retain	1	No	NA	NA	No	Moduloc	See Tree Protection Plan
99	Norway Maple	<i>Acer platanoides</i>	10	Private	Yes	F	F	F	Retain	1	No	NA	NA	No	Moduloc	See Tree Protection Plan
100	Norway Maple	<i>Acer platanoides</i>	12	Private	Yes	F	F	F	Retain	1.2	No	NA	NA	No	Moduloc	See Tree Protection Plan
101	Norway Maple	<i>Acer platanoides</i>	12	Private	Yes	F	F	F	Retain	1.2	No	NA	NA	No	Moduloc	See Tree Protection Plan
102	Norway Maple	<i>Acer platanoides</i>	12	Private	Yes	F	F	F	Retain	1.2	No	NA	NA	No	Moduloc	See Tree Protection Plan
103	Norway Maple	<i>Acer platanoides</i>	12	Private	Yes	F	F	F	Retain	1.2	No	NA	NA	No	Moduloc	See Tree Protection Plan
104	Norway Maple	<i>Acer platanoides</i>	16	Private	Yes	F	F	F	Retain	1.6	No	NA	NA	No	Moduloc	See Tree Protection Plan
105	Norway Maple	<i>Acer platanoides</i>	16	Private	Yes	F	F	F	Retain	1.6	No	NA	NA	No	Moduloc	See Tree Protection Plan
106	Norway Maple	<i>Acer platanoides</i>	20	Private	Yes	F	F	F	Retain	2	No	NA	NA	No	Moduloc	See Tree Protection Plan
107	Norway Maple	<i>Acer platanoides</i>	12	Private	Yes	F	F	F	Retain	1.2	No	NA	NA	No	Moduloc	See Tree Protection Plan
108	Norway Maple	<i>Acer platanoides</i>	12	Private	Yes	F	F	F	Retain	1.2	No	NA	NA	No	Moduloc	See Tree Protection Plan
109	Norway Maple	<i>Acer platanoides</i>	12	Private	Yes	F	F	F	Retain	1.2	No	NA	NA	No	Moduloc	See Tree Protection Plan
110	Norway Maple	<i>Acer platanoides</i>	16	Private	Yes	P	F	F	Retain	1.6	No	NA	NA	No	Moduloc	See Tree Protection Plan
111	Norway Maple	<i>Acer platanoides</i>	16	Private	Yes	P	F	F	Retain	1.6	No	NA	NA	No	Moduloc	See Tree Protection Plan
112	Norway Maple	<i>Acer platanoides</i>	20	Private	Yes	F	F	F	Retain	2	No	NA	NA	No	Moduloc	See Tree Protection Plan

113	Manitoba Maple	<i>Acer negundo</i>	12	Private	Yes	F	F	F	Retain	1.2	No	NA	NA	No	Moduloc	See Tree Protection Plan
114	Chinese Elm	<i>Ulmus pumilla</i>	16	Private	Yes	F	F	F	Retain	1.6	No	NA	NA	No	Moduloc	See Tree Protection Plan
115	Manitoba Maple	<i>Acer negundo</i>	32	Private	Yes	F	F	F	Retain	3.2	No	NA	NA	No	Moduloc	See Tree Protection Plan
116	Manitoba Maple	<i>Acer negundo</i>	36	Private	Yes	F	F	F	Retain	3.6	No	NA	NA	No	Moduloc	See Tree Protection Plan

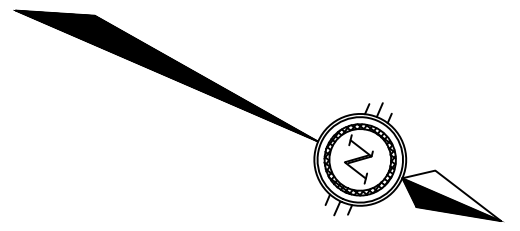
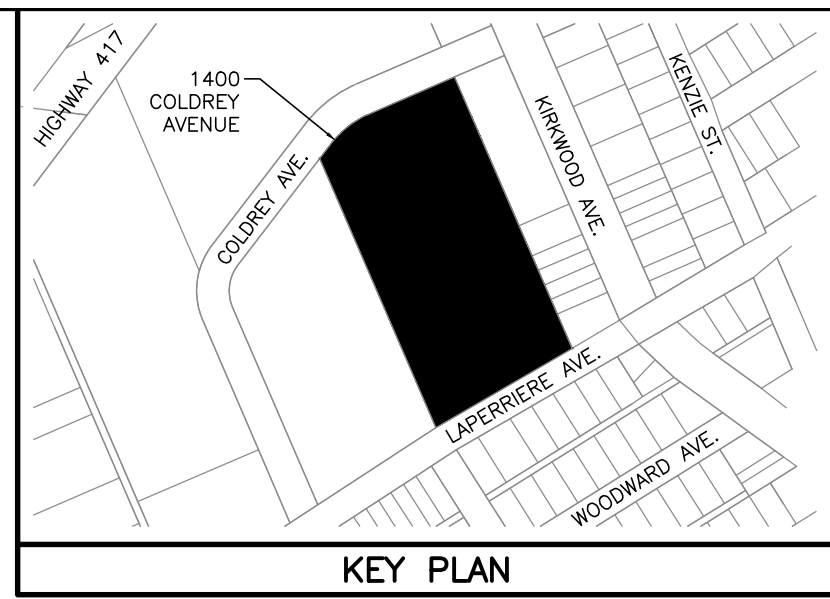
Table 10 – Stand 3 Tree Information

Tree #	Species		DBH (cm)	Ownership	By-Law Protected	Condition			Arborist Recommendations	CRZ (m)	CRZ Impacted	Rec Excavation Limit (m)	Adj TPZ (m)	Tree Planting Required	Specification Recommendations	Notes
	Common	Botanical				(Poor/Fair/Good)										
						Trunk	Canopy	Canopy								
						Integrity	Structure	Vigour								
117	Norway Maple	<i>Acer platanoides</i>	38	Private	Yes	P	F	F	Retain	3.8	No	NA	NA	No	Moduloc	See Tree Protection Plan
118	Chinese Elm	<i>Ulmus pumilla</i>	41	Private	Yes	F	F	F	Retain	4.1	No	NA	NA	No	Moduloc	See Tree Protection Plan
119	Chinese Elm	<i>Ulmus pumilla</i>	60	Private	Yes	P	P	F	Retain	6	No	NA	NA	No	Moduloc	See Tree Protection Plan
120	Manitoba Maple	<i>Acer negundo</i>	38	Private	Yes	F	P	F	Retain	3.8	No	NA	NA	No	Moduloc	See Tree Protection Plan
121	Manitoba Maple	<i>Acer negundo</i>	18	Private	Yes	P	P	F	Retain	1.8	No	NA	NA	No	Moduloc	See Tree Protection Plan
122	Manitoba Maple	<i>Acer negundo</i>	32	Private	Yes	F	P	F	Retain	3.2	No	NA	NA	No	Moduloc	See Tree Protection Plan
123	Chinese Elm	<i>Ulmus pumilla</i>	18	Private	Yes	F	F	F	Retain	1.8	No	NA	NA	No	Moduloc	See Tree Protection Plan
124	Manitoba Maple	<i>Acer negundo</i>	16	Private	Yes	F	F	F	Retain	1.6	No	NA	NA	No	Moduloc	See Tree Protection Plan
125	Norway Maple	<i>Acer platanoides</i>	12	Private	Yes	F	F	F	Retain	1.2	No	NA	NA	No	Moduloc	See Tree Protection Plan
126	Norway Maple	<i>Acer platanoides</i>	14	Private	Yes	F	F	F	Retain	1.4	No	NA	NA	No	Moduloc	See Tree Protection Plan
127	White Ash	<i>Fraxinus americana</i>	14	Private	Yes	P	P	P	Retain	1.4	No	NA	NA	No	Moduloc	See Tree Protection Plan
128	Chinese Elm	<i>Ulmus pumilla</i>		Private	No	F	F	F	Retain	0	No	NA	NA	No	Moduloc	See Tree Protection Plan
129	Chinese Elm	<i>Ulmus pumilla</i>	38	Private	Yes	F	F	F	Retain	3.8	No	NA	NA	No	Moduloc	See Tree Protection Plan
130	Manitoba Maple	<i>Acer negundo</i>	22	Private	Yes	F	F	F	Retain	2.2	No	NA	NA	No	Moduloc	See Tree Protection Plan
131	Manitoba Maple	<i>Acer negundo</i>	20	Private	Yes	F	F	F	Retain	2	No	NA	NA	No	Moduloc	See Tree Protection Plan
132	Manitoba Maple	<i>Acer negundo</i>	14	Private	Yes	F	F	F	Retain	1.4	No	NA	NA	No	Moduloc	See Tree Protection Plan

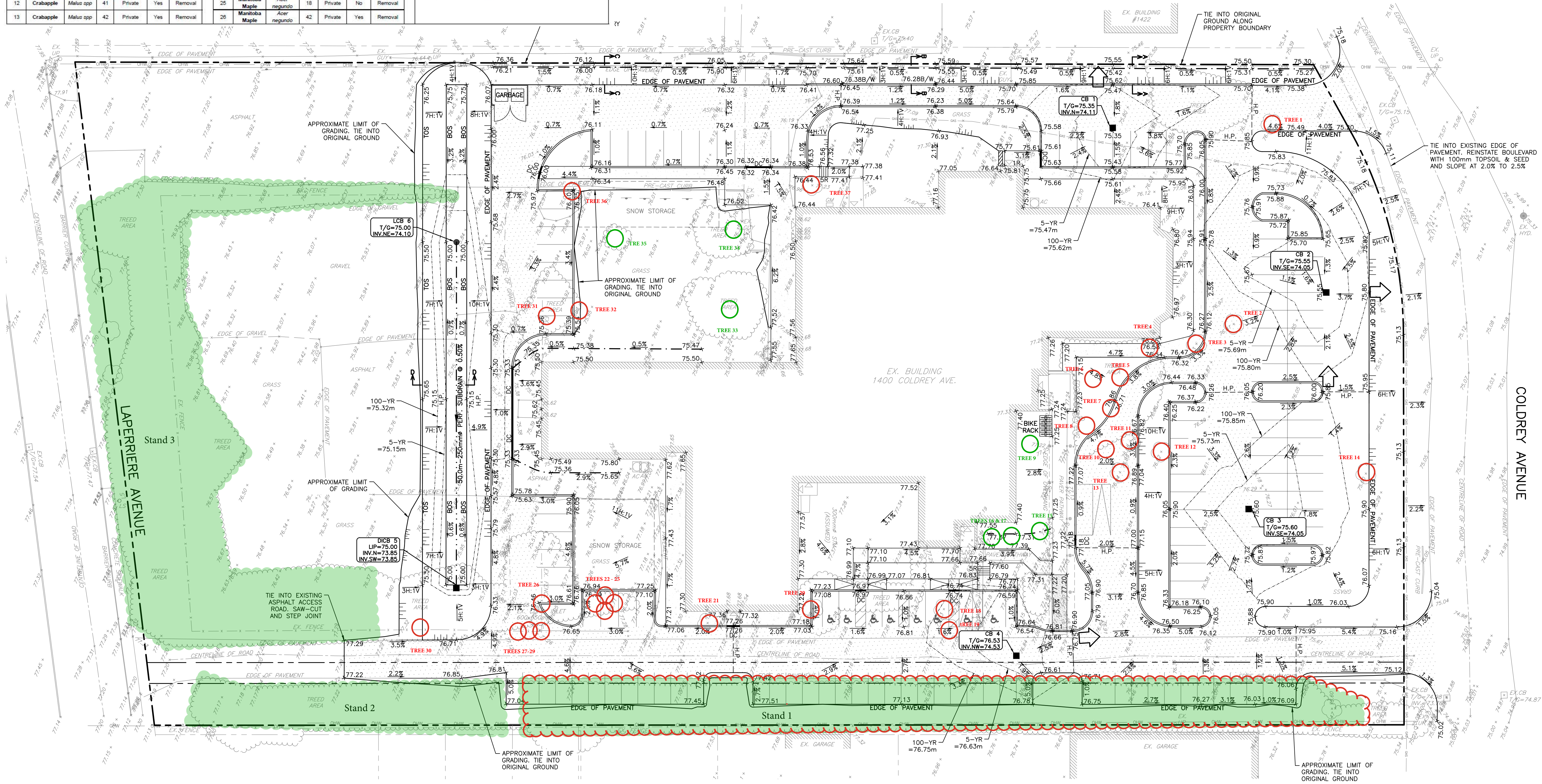
133	Manitoba Maple	<i>Acer negundo</i>	15	Private	Yes	F	F	F	Retain	1.5	No	NA	NA	No	Moduloc	See Tree Protection Plan
134	Norway Maple	<i>Acer platanoides</i>	24	Private	Yes	G	G	G	Retain	2.4	No	NA	NA	No	Moduloc	See Tree Protection Plan
135	Norway Maple	<i>Acer platanoides</i>	16	Private	Yes	F	F	F	Retain	1.6	No	NA	NA	No	Moduloc	See Tree Protection Plan
136	Manitoba Maple	<i>Acer negundo</i>	16	Private	Yes	F	F	F	Retain	1.6	No	NA	NA	No	Moduloc	See Tree Protection Plan
137	Manitoba Maple	<i>Acer negundo</i>	20	Private	Yes	G	G	G	Retain	2	No	NA	NA	No	Moduloc	See Tree Protection Plan
138	Little Leaf Linden	<i>Tilia cordata</i>	52	Private	Yes	F	F	F	Retain	5.2	No	NA	NA	No		
139	Little Leaf Linden	<i>Tilia cordata</i>	48	Private	Yes	F	F	F	Retain	4.8	No	NA	NA	No		
140	Little Leaf Linden	<i>Tilia cordata</i>	49	Private	Yes	F	F	F	Retain	4.9	No	NA	NA	No		
141	Purple Leaf Sandcherry	<i>Prunus cistena</i>	16	Private	Yes	P	P	P	Retain	1.6	No	NA	NA	No		
142	Purple Leaf Sandcherry	<i>Prunus cistena</i>	16	Private	Yes	P	P	P	Retain	1.6	No	NA	NA	No		
143	Purple Leaf Sandcherry	<i>Prunus cistena</i>	18	Private	Yes	F	F	F	Retain	1.8	No	NA	NA	No		
144	Norway Maple	<i>Acer platanoides</i>	32	Private	Yes	G	F	F	Retain	3.2	No	NA	NA	No		
145	Manitoba Maple	<i>Acer negundo</i>	12	Private	Yes	F	F	F	Retain	1.2	No	NA	NA	No		
146	Norway Maple	<i>Acer platanoides</i>	12	Private	Yes	F	F	F	Retain	1.2	No	NA	NA	No		
147	Manitoba Maple	<i>Acer negundo</i>	10	Private	Yes	P	P	P	Retain	1	No	NA	NA	No		
148	Rock Elm	<i>Ulmus thomassii</i>	12	Private	Yes	F	F	F	Retain	1.2	No	NA	NA	No		
149	Rock Elm	<i>Ulmus thomassii</i>	12	Private	Yes	F	F	F	Retain	1.2	No	NA	NA	No		
150	Rock Elm	<i>Ulmus thomassii</i>	14	Private	Yes	F	F	F	Retain	1.4	No	NA	NA	No		
151	Manitoba Maple	<i>Acer negundo</i>	16	Private	Yes	F	F	F	Retain	1.6	No	NA	NA	No		
152	Manitoba Maple	<i>Acer negundo</i>	18	Private	Yes	F	F	F	Retain	1.8	No	NA	NA	No	Moduloc	See Tree Protection Plan
153	Manitoba Maple	<i>Acer negundo</i>	18	Private	Yes	F	F	F	Retain	1.8	No	NA	NA	No	Moduloc	See Tree Protection Plan
154	Manitoba Maple	<i>Acer negundo</i>	32	Private	Yes	F	F	F	Retain	3.2	No	NA	NA	No	Moduloc	See Tree Protection Plan
155	Manitoba Maple	<i>Acer negundo</i>	24	Private	Yes	F	F	F	Retain	2.4	No	NA	NA	No	Moduloc	See Tree Protection Plan
156	Manitoba Maple	<i>Acer negundo</i>	28	Private	Yes	F	F	F	Retain	2.8	No	NA	NA	No	Moduloc	See Tree Protection Plan

TREE INFORMATION TABLE													
Tree #	Species		DBH (cm)	Ownership	By-Law Protected	Arborist Recommendations	Tree #	Species		DBH (cm)	Ownership	By-Law Protected	Arborist Recommendations
	Common	Botanical						Common	Botanical				
1	Red Maple	Acer rubrum	37	Private	Yes	Removal	14	Sugar Maple	Acer saccharum	32	Private	Yes	Removal
2	Ginkgo	Ginkgo biloba	42	Private	Yes	Removal	15	Amur Maple	Acer ginnala	12	Private	No	Retain
3	Ginkgo	Ginkgo biloba	30	Private	Yes	Removal	16	Amur Maple	Acer ginnala	14	Private	No	Retain
4	Ivory Silk Tree Lilac	Syringa reticulata 'Ivory Silk'	37	Private	Yes	Removal	17	Amur Maple	Acer ginnala	18	Private	No	Retain
5	White Spruce	Picea glauca	40	Private	Yes	Removal	18	Ivory Silk Tree Lilac	Syringa reticulata 'Ivory Silk'	64	Private	Yes	Removal
6	White Spruce	Picea glauca	56	Private	Yes	Removal	19	Ivory Silk Tree Lilac	Syringa reticulata 'Ivory Silk'	38	Private	Yes	Removal
7	White Spruce	Picea glauca	43	Private	Yes	Removal	20	Ivory Silk Tree Lilac	Syringa reticulata 'Ivory Silk'	48	Private	Yes	Removal
8	Ivory Silk Tree Lilac	Syringa reticulata 'Ivory Silk'	35	Private	Yes	Removal	21	Crabapple	Malus spp	37	Private	Yes	Removal
9	Manitoba Maple	Acer negundo	24	Private	Yes	Retain	22	Norway Maple	Acer platanoides	25	Private	No	Removal
10	Crabapple	Malus spp	21	Private	Yes	Removal	23	Manitoba Maple	Acer negundo	18	Private	No	Removal
11	Crabapple	Malus spp	34	Private	Yes	Removal	24	Manitoba Maple	Acer negundo	18	Private	No	Removal
12	Crabapple	Malus spp	41	Private	Yes	Removal	25	Manitoba Maple	Acer negundo	18	Private	No	Removal
13	Crabapple	Malus spp	42	Private	Yes	Removal	26	Manitoba Maple	Acer negundo	42	Private	Yes	Removal
27	White Ash	Fraxinus americana	11	Private	Yes	Removal	31	Rock Elm	Ulmus thomasii	36	Private	Yes	Removal
28	Rock Elm	Ulmus thomasii	11	Private	Yes	Removal	32	Crimson King Norway Maple	Acer platanoides 'Crimson King'	12	Private	Yes	Removal
29	Manitoba Maple	Acer negundo	11	Private	Yes	Removal	33	Chinese Elm	Ulmus pumila	35	Private	Yes	Retain
30	Manitoba Maple	Acer negundo	41	Private	Yes	Removal	34	Norway Spruce	Picea abies	16	Private	Yes	Retain
35	Chestnut	Aesculus hippocastanum	14	Private	Yes	Retain	36	White Ash	Fraxinus americana	12	Private	No	Removal
37	Blue Spruce	Picea pungens 'Glauc'	56	Private	Yes	Removal							

Stand Information Table												
Stand #	Dominant Species			Secondary Species			Ownership	Area (Ha)	# of Trees	# By-Law Protected Trees	Avg DBH (cm)	Arborist Recommendations
	Common	Botanical	%	Common	Botanical	%						
1	Norway Maple	Acer platanoides	59	Manitoba Maple	Acer negundo	25	Private	0.07	42	38	19	Removal
2	Norway Maple	Acer platanoides	84	Manitoba Maple	Acer negundo	10	Private	0.03	38	38	15	Retain
3	Manitoba Maple	Acer negundo	48	Norway Maple	Acer platanoides	16	Private	0.1	40	40	23	Retain

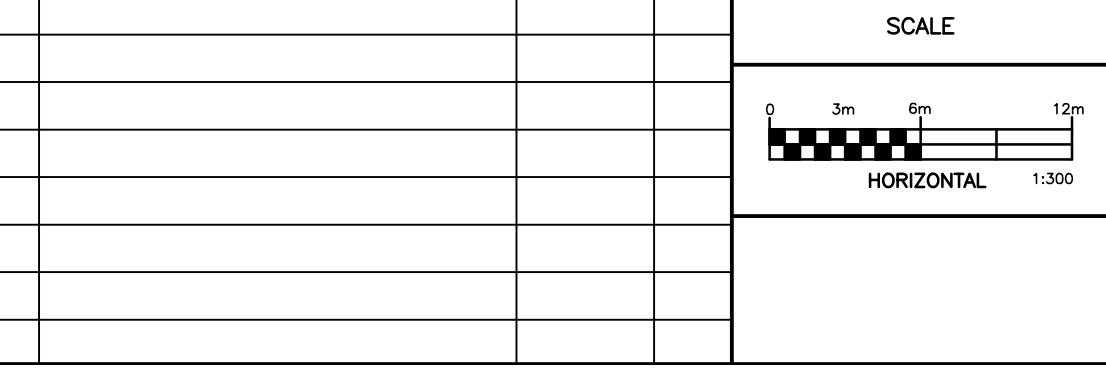


- LEGEND**
- PROPERTY BOUNDARY
 - EXISTING CATCH BASIN
 - EXISTING LIGHT STANDARD
 - EXISTING UTILITY POLE
 - H.P. --- HIGH POINT
 - DC --- DEPRESSED CURB WITH TWSI
 - TERRACING (3H:1V MAX.)
 - +74.00 --- EXISTING ELEVATION
 - x 75.00 --- PROPOSED GRADE
 - 2.0% --- DRAINAGE SLOPE & DIRECTION
 - CATCH BASIN
 - ELBOW LANDSCAPE CATCH BASIN (CITY STD. S31)
 - SWALE
 - SWALE WITH 250mm^φ PERFORATED SUBDRAIN
 - 5-YR --- 5-YEAR PONDING LIMIT
 - 100-YR --- 100-YEAR PONDING LIMIT
 - EXISTING BUILDING ENTRANCE
 - MAJOR OVERLAND FLOW ROUTE
 - HEAVY-DUTY PAVEMENT STRUCTURE
 - TREES TO BE REMOVED
 - TREES TO BE RETAINED
 - STAND OF TREES TO BE RETAINED
 - STAND OF TREES TO BE REMOVED



NOTES

This is not a plan of survey, tree information layer added to a drawing provided by the client.



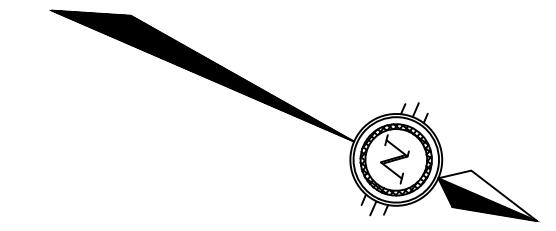
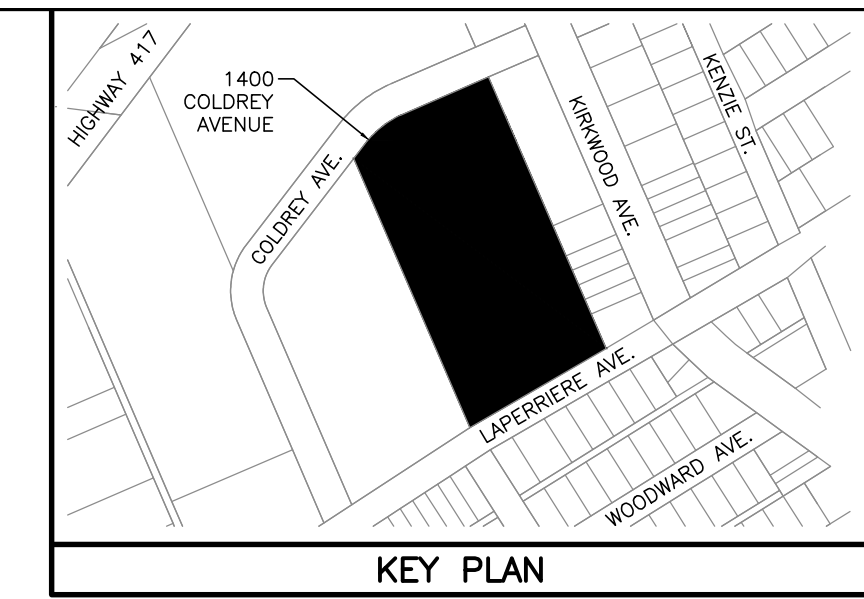
OTTAWA TREE REPORTS
www.ottawatreeports.com
info@ottawatreeports.com
 613-204-8687

KEHILLAT BETH ISRAEL
 1400 COLDREY AVENUE
 CITY OF OTTAWA

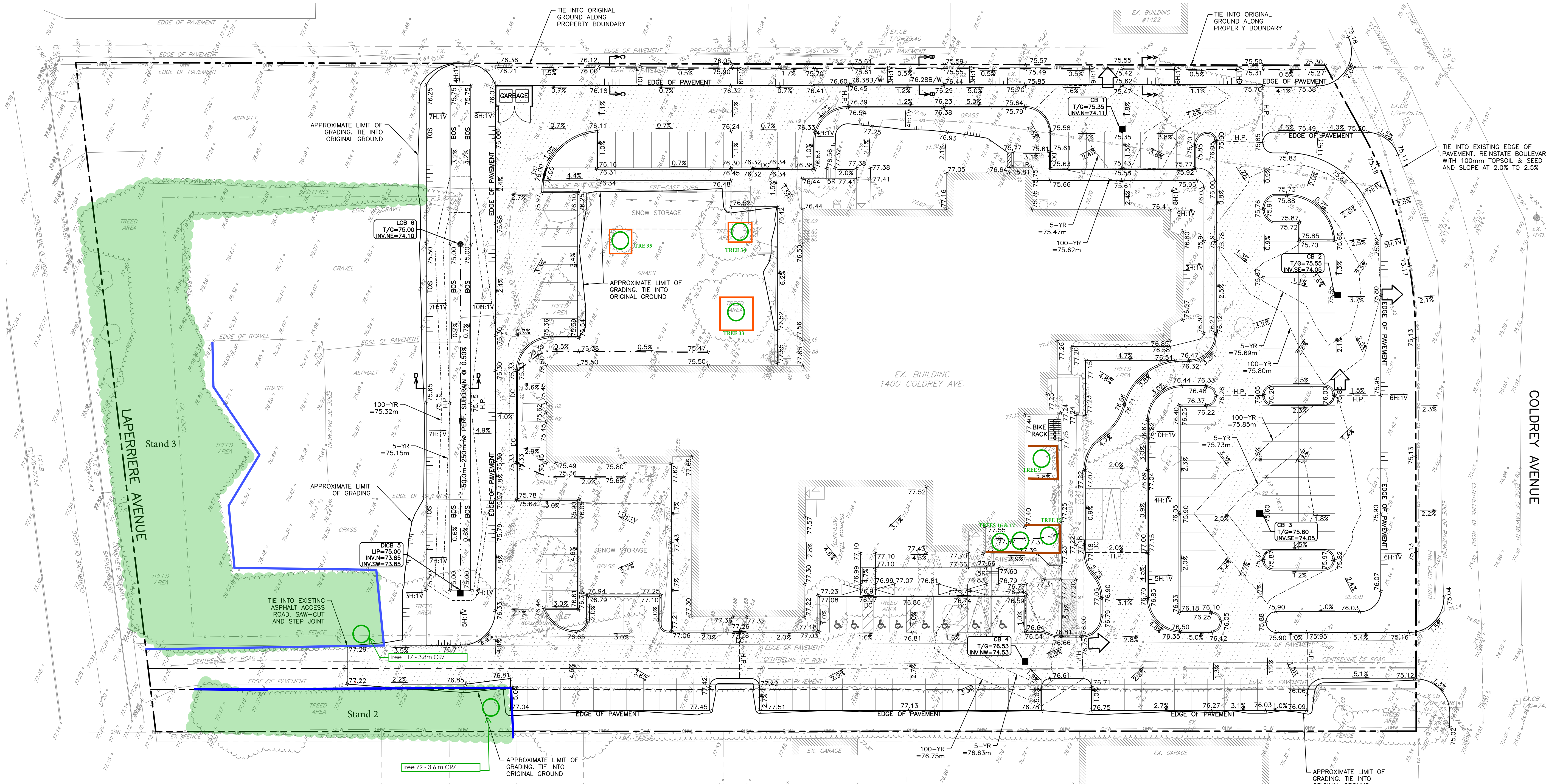
TREE INFORMATION PLAN

PROJECT No. _____
 SURVEY _____
 DATED JUNE 2025
 DWG. No. _____

APPENDIX B



- LEGEND**
- PROPERTY BOUNDARY
 - EXISTING CATCH BASIN
 - ₅ EXISTING LIGHT STANDARD
 - _{EX UP} EXISTING UTILITY POLE
 - H.P. HIGH POINT
 - DC DEPRESSED CURB WITH TWSI
 - TERRACING (3H:1V MAX.)
 - +74.00 EXISTING ELEVATION
 - × 75.00 PROPOSED GRADE
 - 2.0% DRAINAGE SLOPE & DIRECTION
 - CATCH BASIN
 - LCB ELBOW LANDSCAPE CATCH BASIN (CITY STD. S31)
 - SWALE
 - SWALE WITH 250mm^Ø PERFORATED SUBDRAIN
 - 5-YEAR PONDING LIMIT
 - 100-YEAR PONDING LIMIT
 - EXISTING BUILDING ENTRANCE
 - MAJOR OVERLAND FLOW ROUTE
 - HEAVY-DUTY PAVEMENT STRUCTURE
 - TREES TO BE PROTECTED
 - STAND OF TREES TO BE PROTECTED
 - SNOW FENCE
 - MODULOC
 - PLYWOOD

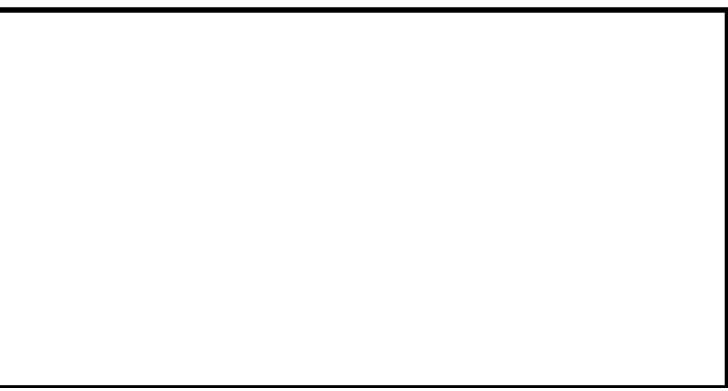
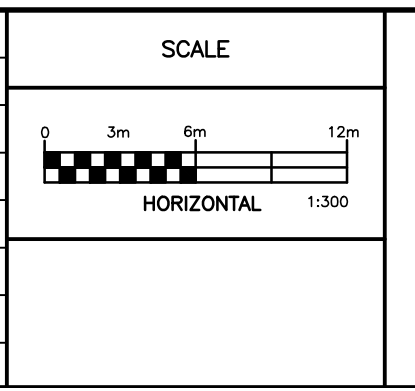


NOTES

This is not a plan of survey, tree protection layer has been added to the document provided by the Client.

Tree Protection Zones identified on this plan are for graphical representation only and should not be used for scaling purposes. Where not outlined, Tree Protection should be installed at the CRZ limit.

Tree Protection measures shall be installed according to City of Ottawa Specifications



OTTAWA TREE REPORTS

www.ottawatreeports.com
info@ottawatreeports.com
613-204-8687

KEHILLAT BETH ISRAEL

1400 COLDREY AVENUE
CITY OF OTTAWA

TREE PROTECTION PLAN

PROJECT No.	
SURVEY	
DATED	JUNE 2025
DWG. No.	

APPENDIX C

ASSUMPTIONS AND LIMITING CONDITIONS

Intended Use of the Report

This Report was prepared by Ottawa Tree Reports (hereafter "OTR") at the request of the Client. The results, observations, interpretations, analysis, recommendations, and conclusions contained within this Report are to be used solely for the purposes outlined within this Report. All other uses are impermissible and unintended, unless specifically stated in writing in the Report.

Intended User of the Report

This Report was prepared by OTR for the exclusive use of the Client and may not be used or relied upon by any other party. All other users are unintended and unauthorized, unless specifically stated in writing in the Report.

Limitations of this Report

This Report is based on the circumstances and on-site conditions as they existed at the time of the site inspection and the information provided by the Client and/or third parties to OTR. On-site conditions may limit the extent of the on-site inspection(s) conducted by OTR, including weather events such as rain, flooding, storms, winds, tornados, snowfall, snow cover, hail; obstructions including fencing, dwellings, buildings, sheds, plants, and animals; lack of access to the entire perimeter of the tree due to adjacent properties; the shape of the tree; and accessibility of the tree crown, branches, trunk, or roots for examination.

In the event that information provided by the Client or any third parties, including but not limited to documents, records, site and grading plans, permits, or representations or any site conditions are updated or change following the completion of this Report, this Report is no longer current and valid and cannot be relied upon for the purpose for which it was prepared. OTR and its agents, assessors, and/or employees are not liable for any damages, injuries, or losses arising from amendments, revisions, or changes to the documents, records, site and grading plans, permits, representations, or other information upon which OTR relied in preparing this Report.

No assessment of any other trees or plants has been undertaken by OTR. OTR and its agents, assessors, and/or employees are not liable for any other trees or plants on or around the subject Property except those expressly identified herein. The results, observations, interpretations, analysis, recommendations, and conclusions contained within this Report apply only to the trees identified herein.

Trees and plants are living organisms and subject to change, damage, and disease, and the results, observations, interpretations, analysis, recommendations, and conclusions as set out in this Report are valid only as at the date any inspections, observations, tests, and analysis took place. No guarantee, warranty, representation, or opinion is offered or made by OTR as to the length of the validity of the results, observations, interpretations, analysis, recommendations, and conclusions contained within this Report. As a result, the Client shall only rely upon this Report as representing the results, observations, interpretations, analysis, recommendations, and conclusions that were made as at the date of such inspections, observations, tests, and analysis. The trees discussed in this Report should be re-assessed periodically and at least within one year of the date of this Report.

No Opinion regarding ownership of the Tree

This Report was not prepared to make a determination as to ownership of the subject tree(s). Where ownership of the subject tree(s) is identified within this Report, said identification is based on the information provided by the Client and third parties, including surveys, permits, and site and grading plans and may not be relied upon as a guarantee, warranty, or representation of ownership.

Assumptions

This Report is based on the circumstances and conditions as they existed at the time of the site inspection and the information provided by the Client and/or third parties to OTR. Where documents, records, site and grading plans, permits, representations, and any other information was provided to OTR for the purpose of preparing this Report, OTR assumed that said information was correct and up-to-date and prepared this Report in reliance on that information. OTR and its agents, assessors, and/or employees, are not responsible for the veracity or accuracy of such information. OTR and its agents, assessors, or employees are not liable for any damages, injuries, or losses arising from inaccuracies, errors, and/or omissions in the documents, records, site and grading plans, permits, representations, or other information upon which OTR relied in preparing this Report.

For the purpose of preparing this Report, OTR and its agents, assessors, and/or employees assumed that the property which is the subject of this Report is in full compliance with all applicable federal, provincial, municipal, and local statutes, regulations, by-laws, guidelines, and other related laws. OTR and its agents, assessors, and/or employees are not liable for any issues with respect to non-compliance with any of the above-referenced statutes, regulations, bylaws, guidelines, and laws as it may pertain to or affect the property to which this Report applies. For the purpose of preparing this Report, OTR and its agents, assessors, and/or employee assumed that there are no hidden or unapparent conditions affecting the results, observations, interpretations, analysis, recommendations, and conclusions contained within this Report.

No Publication

The Client acknowledges and agrees that all intellectual property rights and title, including without limitation, all copyright in this Report shall remain solely with OTR. Possession of this Report, or a copy thereof, does not entitle the Client or any third party to the right of publication or reproduction of the Report for any purpose save and except where OTR has given its prior written consent. Neither all nor any part of the contents of this Report shall be disseminated to the public through advertising, public relations, news, sales, the internet or other media (including, without limitation, television, radio, print or electronic media) without the prior written consent of OTR.

Implementing the Report Recommendations

OTR and its agents, assessors, and/or employees accept no responsibility for the implementation of any part of this Report unless specifically requested to provide oversight on the implementation of the recommendations. In the event that inspection or supervision of all or part of the implementation of the within recommendations is requested, that request shall be in writing and the details agreed to in writing by both parties. OTR and its agents, assessors, and/or employees are not liable for any damages or injuries arising from the manner in which the recommendations in this Report are implemented, including failure to, incorrect, or negligent implementation of the recommendations.

Further Services

Neither OTR nor any assessor employed or retained by OTR for the purpose of preparing or assisting in the preparation of this Report shall be required to provide any further consultation or services to the Client, save and except as already carried out in the preparation of this Report and including, without limitation, to act as an expert witness or witness in any court in any jurisdiction unless the Client has first made specific arrangements with respect to such further services, including, without limitation, providing the payment of the Report's regular hourly billing fees.

Limits of Liability

In carrying out this Report, OTR and its agents, assessors, and/or employees have exercised a reasonable standard of care, skill, and diligence as would be customarily and normally provided in carrying out this Report. While reasonable efforts have been made to ensure that the trees recommended for retention are healthy, no guarantees are offered, or implied, that these trees, or all parts of them will remain standing. It is professionally impossible to predict with absolute certainty the behaviour of any single tree or group of trees, or all their component parts, in all given circumstances. Inevitably, a standing tree will always pose some risk. Most trees have the potential to fall, lean, or otherwise pose a danger to property and persons in the event of adverse weather conditions, and this risk can only be eliminated if the tree is removed.

Without limiting the foregoing, no liability is assumed by OTR for:

- a) any legal description provided with respect to the Property;
- b) issues of title and or ownership respect to the Property;
- c) the accuracy of the Property line locations or boundaries with respect to the Property; and
- d) the accuracy of any other information provided to OTR by the Client or third parties;
- e) any consequential loss, injury or damages suffered by the Client or any third parties, including but not limited to replacement costs, loss of use, earnings and business interruption; and
- f) the unauthorized distribution of the Report.

The total monetary amount of all claims or causes of action the Client may have as against OTR, including but not limited to claims for negligence, negligent misrepresentation, and breach of contract, shall be strictly limited solely to the total amount of fees paid by the Client to OTR pursuant to the Contract for Services dated February 10, 2025 for which this Assessment was carried out. Further, under no circumstance may any claims be initiated or commenced by the Client against OTR or any of its directors, officers, employees, contractors, agents, assessors, or Assessors, in contract or in tort, more than 12 months after the date of this Report.

No Third-Party Liability

This Report was prepared by OTR exclusively for the Client for the purpose set out in the Report. Any use which a third party makes of this Report, or any reliance on or decisions a third party may make based upon this Report, are made at the sole risk of any such third parties. OTR accepts no responsibility for any damages or loss suffered by any third party or by the Client as a result of decisions made or actions based upon the unauthorized use or reliance of this Report by any such party.

General

Any plans and/or illustrations in this Report are included only to help the Client visualize the issues in this Report and shall not be relied upon for any other purpose. This report is best viewed in colour. Any copies printed in black and white may make some details difficult to properly understand. OTR accepts no liability for misunderstandings due to a black and white copy of the report. Notwithstanding any of the above, nothing in this Report is taken to absolve the Client of the responsibility of obtaining a new Report in the event that the circumstances of the tree change.