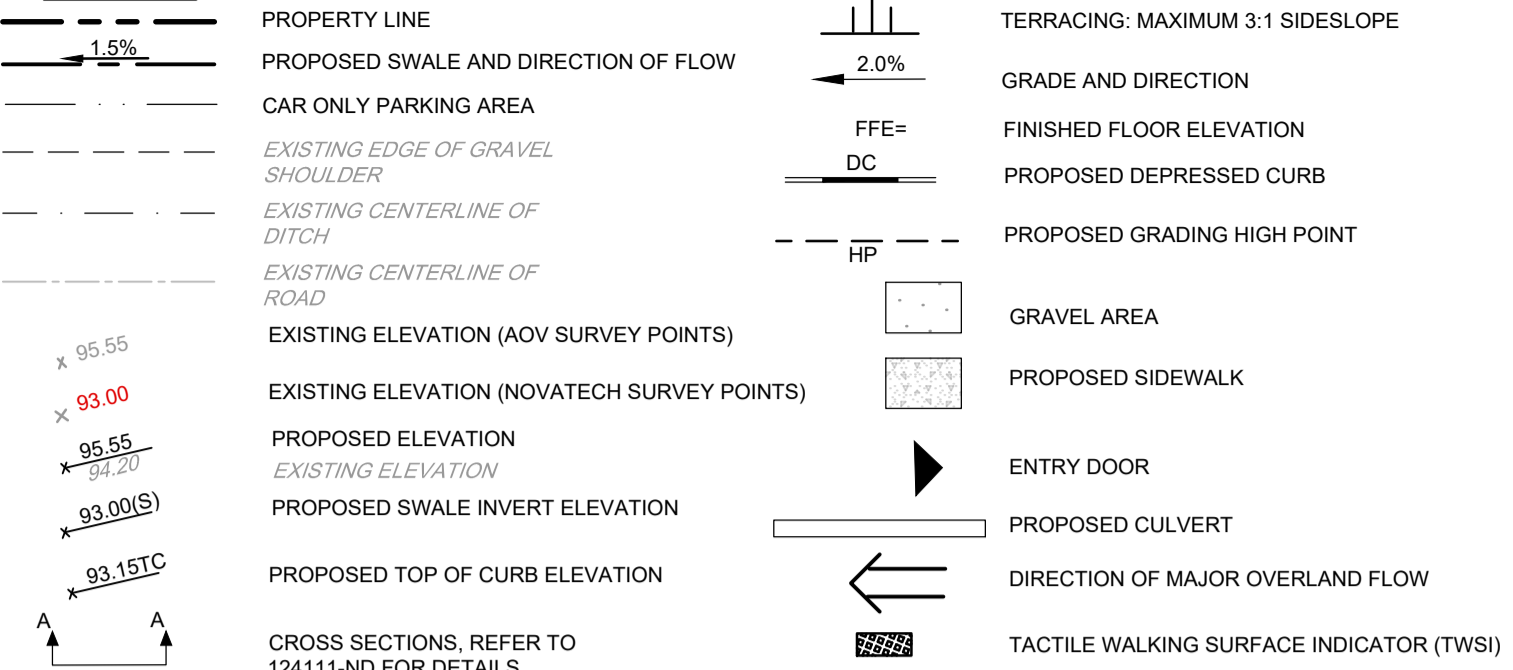


**LEGEND**



**GRADING NOTES:**

- ALL TOPSOIL, ORGANIC OR DELETERIOUS MATERIAL MUST BE ENTIRELY REMOVED FROM BENEATH THE PROPOSED PAVED AREAS AS DIRECTED BY THE SITE ENGINEER OR GEOTECHNICAL ENGINEER.
- EXPOSED SUBGRADES IN PROPOSED PAVED AREAS SHOULD BE PROOF ROLLED WITH A LARGE STEEL DRUM ROLLER AND INSPECTED BY THE GEOTECHNICAL ENGINEER PRIOR TO THE PLACEMENT OF GRANULARS.
- ANY SOFT AREAS EVIDENT FROM THE PROOF ROLLING SHOULD BE SUB-EXCAVATED AND REPLACED WITH SUITABLE MATERIAL THAT IS FROST COMPATIBLE WITH THE EXISTING SOILS AS RECOMMENDED BY THE GEOTECHNICAL ENGINEER.
- THE PAVEMENT GRANULAR BASE AND SUBBASE SHOULD BE PLACED IN 300mm THICK LIFTS AND COMPACTED TO A MINIMUM OF 99% OF THE MATERIAL'S SPMDM USING SUITABLE COMPACTION EQUIPMENT.
- MINIMUM OF 2% GRADE FOR ALL GRASS AREAS UNLESS OTHERWISE NOTED.
- MAXIMUM TERRACING GRADE TO BE 3:1 UNLESS OTHERWISE NOTED.
- ALL GRADES BY CURBS ARE EDGE OF PAVEMENT GRADES UNLESS OTHERWISE INDICATED.
- ALL CURBS SHALL BE BARRIER CURB (150mm) UNLESS OTHERWISE NOTED AND CONSTRUCTED AS PER CITY OF OTTAWA STANDARDS (SC1.1).
- REFER TO LANDSCAPE PLAN FOR PLANTING AND OTHER LANDSCAPE FEATURE DETAILS.
- CONTRACTOR TO PROVIDE THE CONSULTANT WITH A GRADING PLAN INDICATING AS-BUILT ELEVATIONS OF ALL DESIGN GRADES SHOWN ON THIS PLAN.
- ALL ELEVATIONS ARE GEODETIC AND ARE REFERRED TO THE CGVD28 GEODETIC DATUM. THE SITE BENCHMARK IS LOCATED ON THE UNDERSIDE OF THE WELL CASING CAP AND IS ELEVATION 90.18m. BEARINGS ARE REFERENCED TO THE CENTRAL MERIDIAN OF MTM ZONE 9, NAD83 (CSRS)(2010). REFER TO "PLAN OF SURVEY OF BLOCK 2, REGISTERED PLAN 4M-1388, CITY OF OTTAWA, BY ANNIS O'SULLIVAN VOLLBEK LTD.
- ALL LANDSCAPE DRAIN T/G SHALL BE INSTALLED 5cm ABOVE THE BOTTOM OF SWALE ELEVATIONS TO PROMOTE INFILTRATION.
- THE PAVEMENT AND GRAVEL SURFACE STRUCTURES NOTED ON THIS PLAN ARE AS PER THE GEOTECHNICAL CONSULTANTS RECOMMENDATION. REFER TO GEOTECHNICAL REPORT (No. PG7327-1 REV. 1, DATED AUGUST 21, 2025) FOR COMPLETE DETAILS.

**PAVEMENT STRUCTURE:**

CAR ONLY PARKING AREA  
50mm SUPERPAVE 12.5 SURFACE COURSE  
150mm OPSS GRANULAR A BASE COURSE  
300mm OPSS GRANULAR B TYPE II SUBBASE

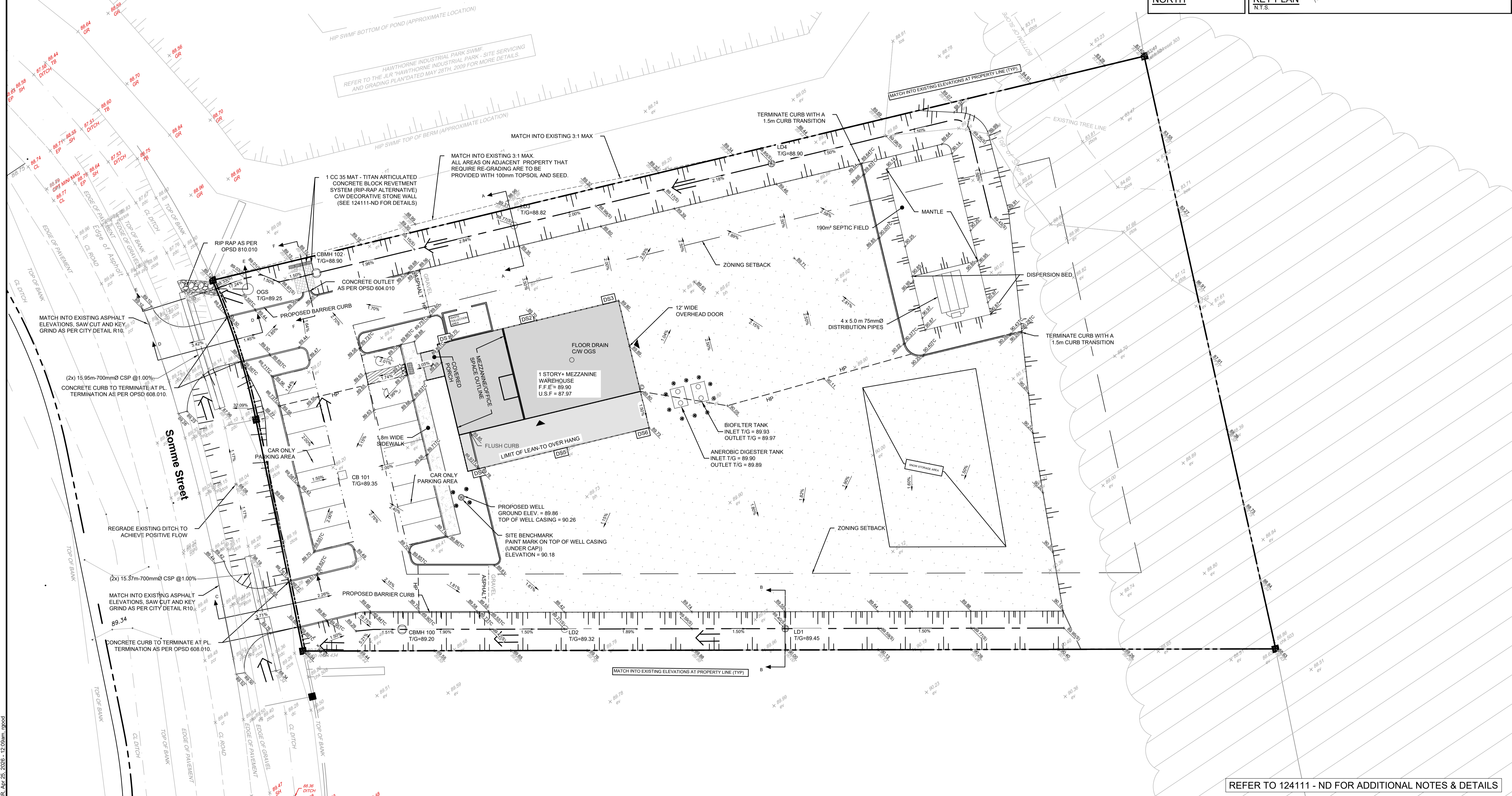
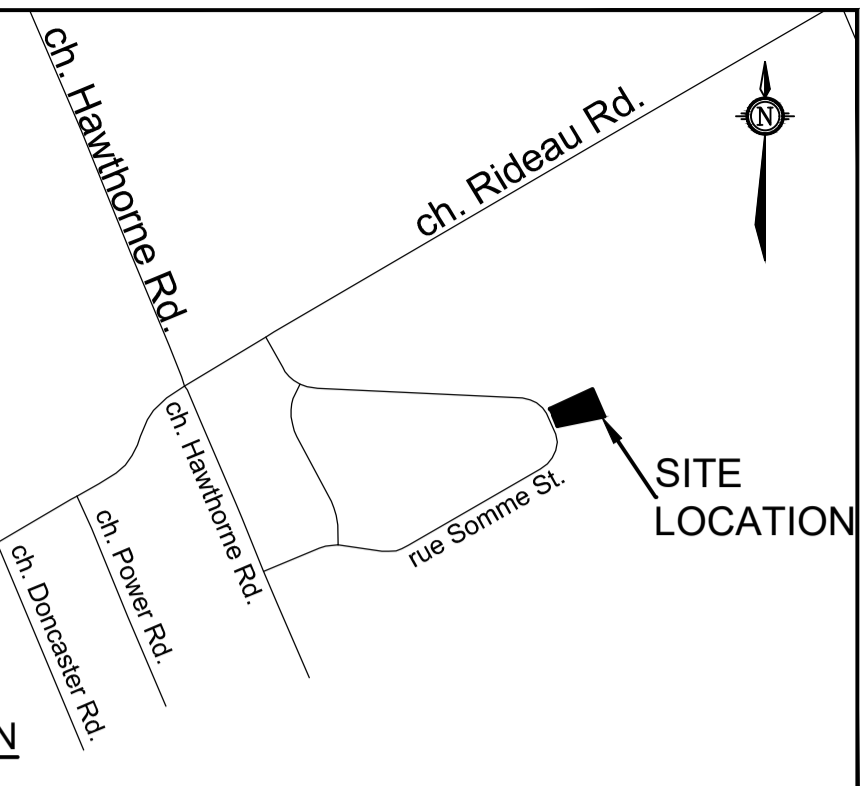
ACCESS LANES  
40mm SUPERPAVE 12.5 SURFACE COURSE  
50mm SUPERPAVE 19.0 BINDER COURSE  
150mm OPSS GRANULAR A BASE COURSE  
450mm OPSS GRANULAR B TYPE II SUBBASE

**GRAVEL STRUCTURE:**

300mm OPSS GRANULAR A BASE COURSE  
450mm OPSS GRANULAR B TYPE II SUBBASE

NORTH

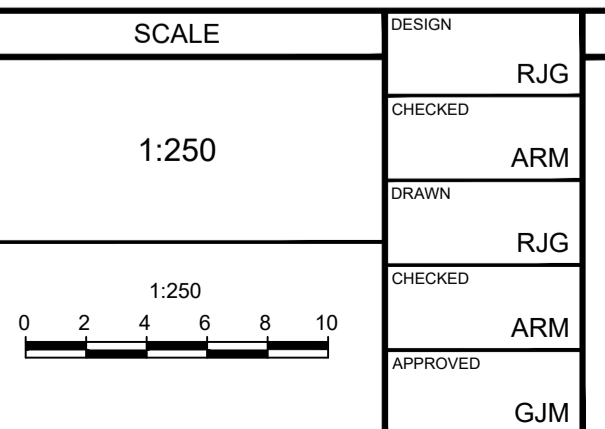
KEY PLAN  
N.T.S.



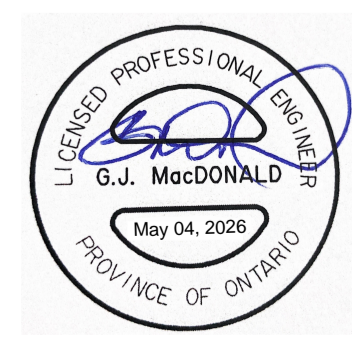
REFER TO 124111 - ND FOR ADDITIONAL NOTES & DETAILS

**NOTE:**  
THE POSITION OF ALL POLE LINES, CONDUITS, WATERMANS, SEWERS AND OTHER UNDERGROUND AND OVERGROUND UTILITIES AND STRUCTURES IS NOT NECESSARILY SHOWN ON THE CONTRACT DRAWINGS, AND WHERE SHOWN, THE ACCURACY OF THE POSITION OF SUCH UTILITIES AND STRUCTURES IS NOT GUARANTEED. BEFORE STARTING WORK, DETERMINE THE EXACT LOCATION OF ALL SUCH UTILITIES AND STRUCTURES AND ASSUME ALL LIABILITY FOR DAMAGE TO THEM.

No.	REVISION	DATE	BY
5.	ISSUED TO ADDRESS CITY COMMENTS	MAY 04/ 2026	GJM
4.	ISSUED FOR SITE PLAN APPROVAL	MAR 17/ 2026	GJM
3.	ISSUED TO ADDRESS CITY COMMENTS	FEB 06/ 2026	GJM
2.	ISSUED TO ADDRESS CITY COMMENTS	SEP 23/2025	GJM
1.	ISSUED FOR SITE PLAN APPLICATION	JUN 03/2025	GJM



DESIGN		FOR REVIEW ONLY	
DESIGNED	RJG	DESIGNED	ARM
CHECKED	ARM	CHECKED	RJG
DRAWN	RJG	CHECKED	ARM
APPROVED	ARM	APPROVED	GJM



**NOVATECH**  
Engineers, Planners & Landscape Architects  
Suite 200, 240 Michael Copland Drive  
Ottawa, Ontario, Canada K2M 1P6

Telephone (613) 254-9643  
Facsimile (613) 254-5867  
Website www.novatech-eng.com

LOCATION CITY OF OTTAWA 541 SOMME STREET		PROJECT No. 124111
DRAWING NAME GRADING PLAN		REV # REV # 4
		DRAWING No. 124111-GR

M:\2024\124111\CAD\Civil\124111-GR.dwg, GR, Apr 25, 2026 - 12:09am, rjg

FILE # D07-12-25-0077 PLAN # 19398