

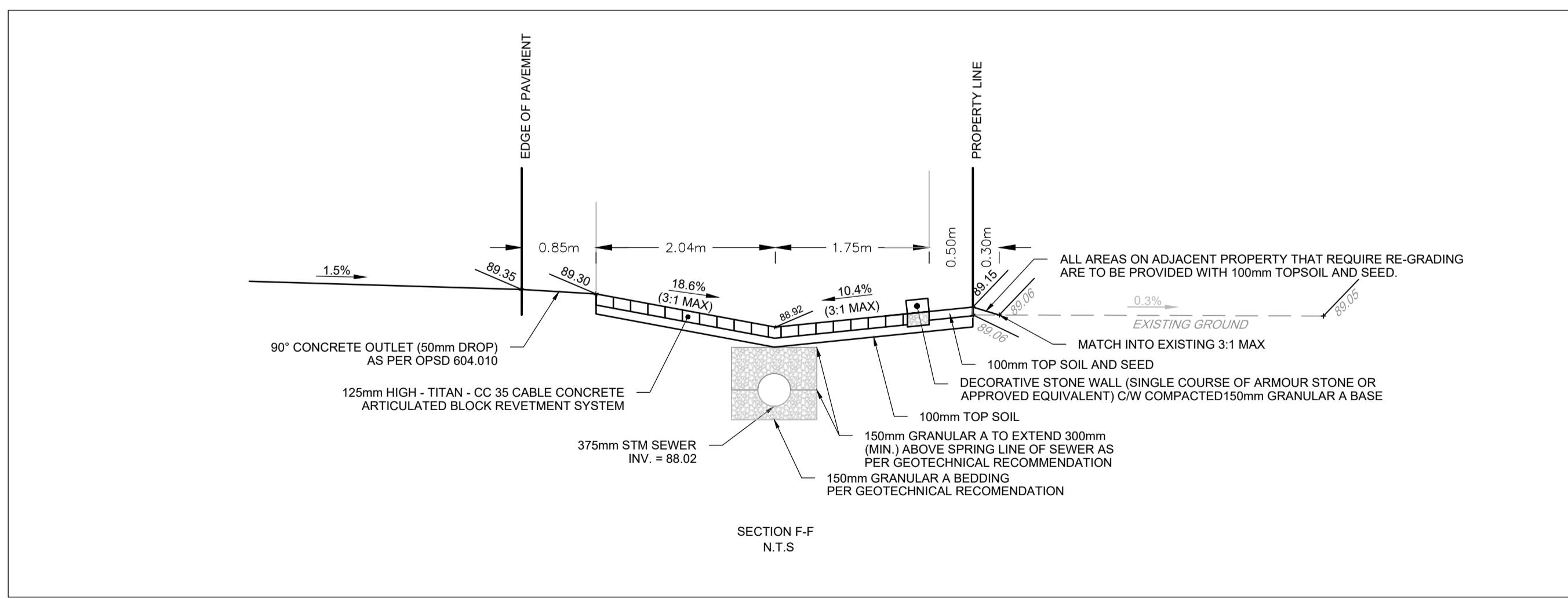
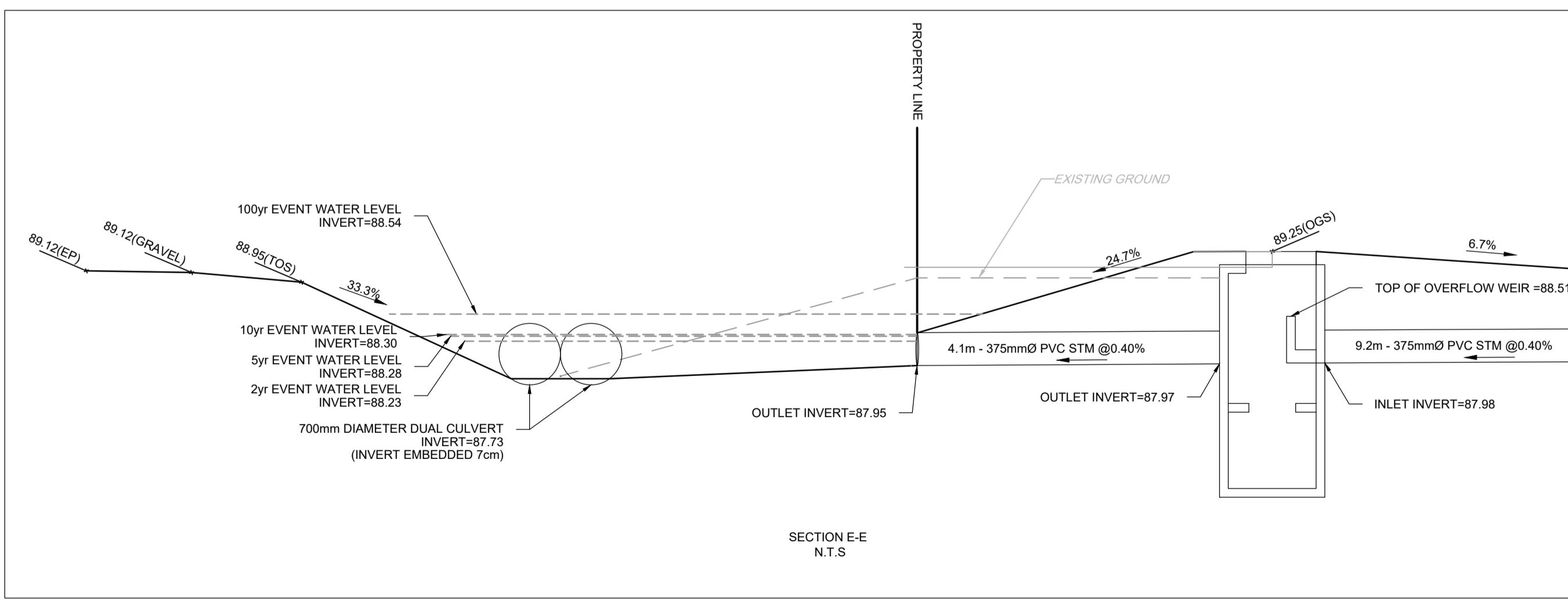
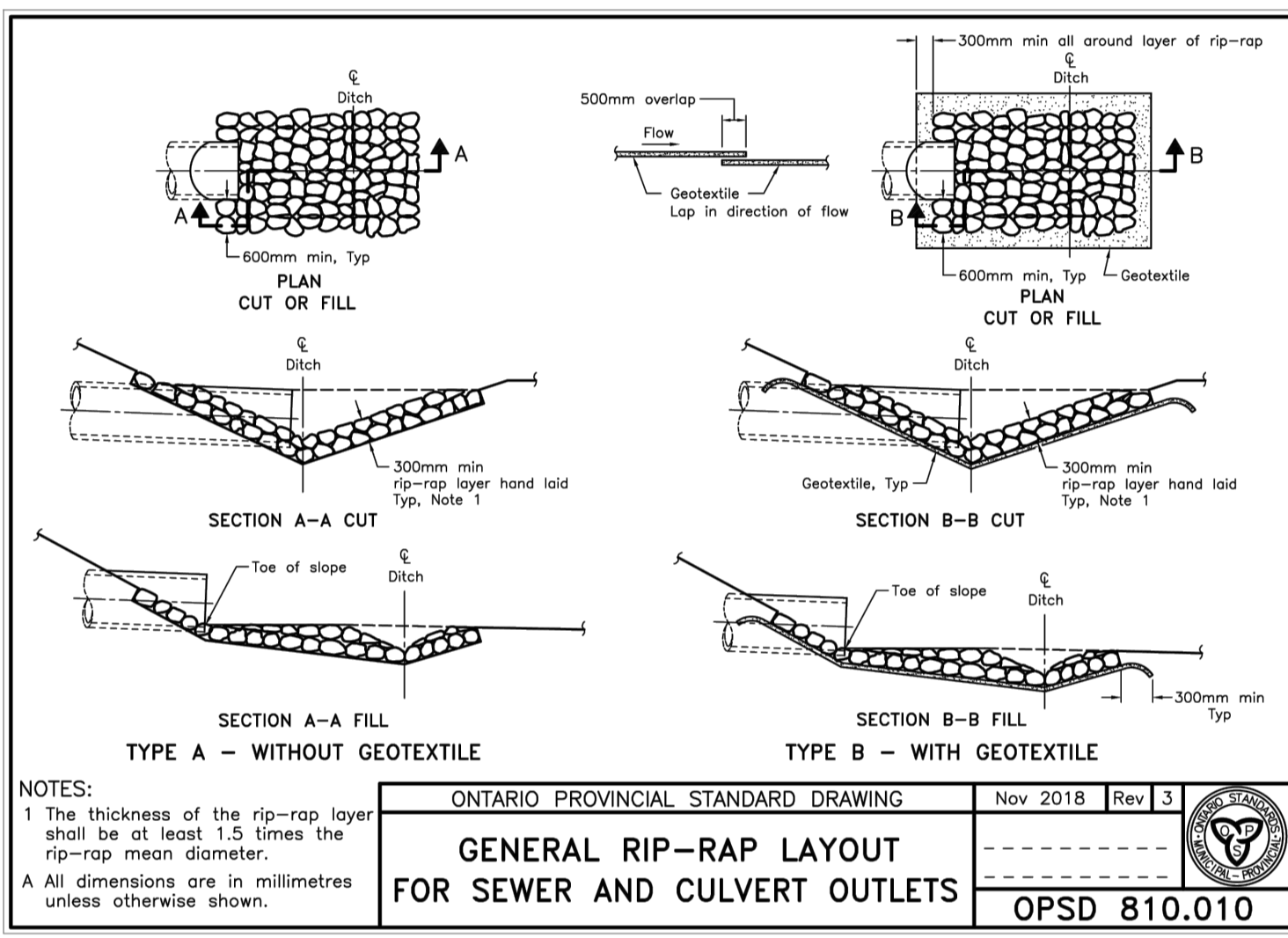
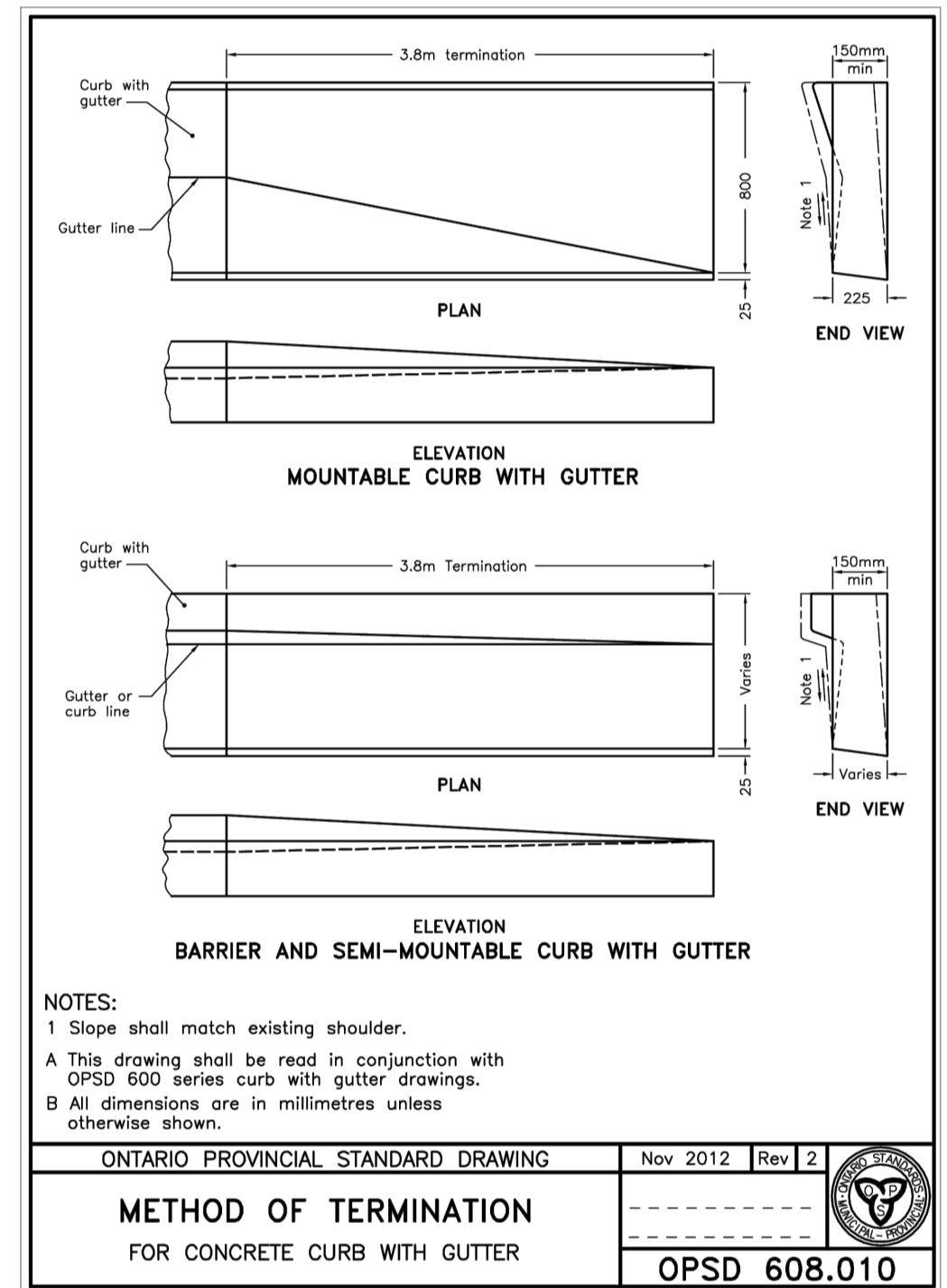
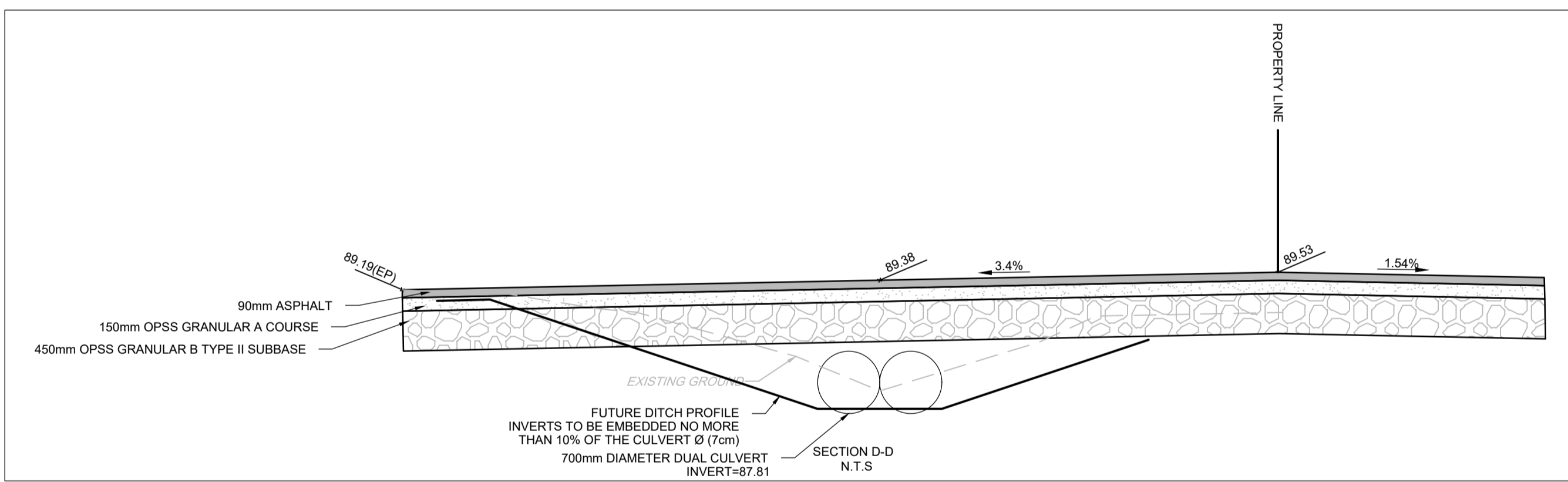
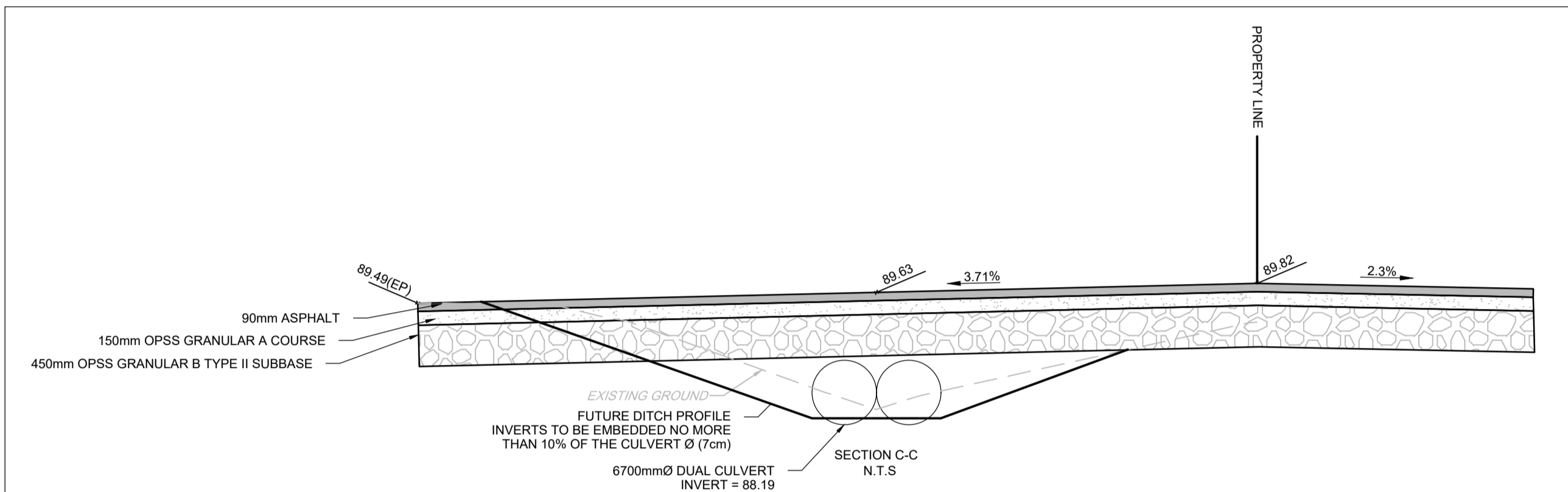
PAVEMENT STRUCTURE:

CAR ONLY PARKING AREA
 50mm SUPERPAVE 12.5 SURFACE COURSE
 150mm OPSS GRANULAR A BASE COURSE
 300mm OPSS GRANULAR B TYPE II SUBBASE

ACCESS LANES
 40mm SUPERPAVE 12.5 SURFACE COURSE
 50mm SUPERPAVE 19.0 BINDER COURSE
 150mm OPSS GRANULAR A BASE COURSE
 450mm OPSS GRANULAR B TYPE II SUBBASE

GRAVEL STRUCTURE:

300mm OPSS GRANULAR A BASE COURSE
 450mm OPSS GRANULAR B TYPE II SUBBASE



NOTE:
 THE POSITION OF ALL POLE LINES, CONDUITS, WATERMANS, SEWERS AND OTHER UNDERGROUND AND OVERGROUND UTILITIES AND STRUCTURES IS NOT NECESSARILY SHOWN ON THE CONTRACT DRAWINGS, AND WHERE SHOWN, THE ACCURACY OF THE POSITION OF SUCH UTILITIES AND STRUCTURES IS NOT GUARANTEED. BEFORE STARTING WORK, DETERMINE THE EXACT LOCATION OF ALL SUCH UTILITIES AND STRUCTURES AND ASSUME ALL LIABILITY FOR DAMAGE TO THEM.

NOT FOR CONSTRUCTION

No.	REVISION	DATE	BY
4.	ISSUED TO ADDRESS CITY COMMENTS	MAY 04/2026	GJM
3.	ISSUED FOR SITE PLAN APPROVAL	MAR 17/2026	GJM
2.	ISSUED TO ADDRESS CITY COMMENTS	FEB 06/2026	GJM
1.	ISSUED TO ADDRESS CITY COMMENTS	SEP 23/2025	GJM

SCALE	DESIGN
AS SHOWN	RJG
	CHECKED ARM
	DRAWN RJG
AS SHOWN	ARM
	CHECKED ARM
	APPROVED GJM

FOR REVIEW ONLY

PROFESSIONAL ENGINEER
 G.J. MacDONALD
 May 04, 2026
 PROVINCE OF ONTARIO

NOVATECH
 Engineers, Planners & Landscape Architects
 Suite 200, 240 Michael Cowpland Drive
 Ottawa, Ontario, Canada K2M 1P6
 Telephone (613) 254-9643
 Facsimile (613) 254-5867
 Website www.novatech-eng.com

LOCATION		PROJECT No.	
CITY OF OTTAWA 541 SOMME STREET		124111	
DRAWING NAME		REV	
NOTES AND DETAILS PLAN		REV # 4	
		DRAWING No.	
		124111-ND	

M:\2024\124111\CAD\Civil\124111-ND.dwg, ND, May 03, 2026 - 8:27pm, rpsod

FILE # D07-12-25-0077 PLAN # 19398