

OCH GEYSER PLACE

ISSUED FOR SPC REVIEW

3380 JOCKVALE ROAD

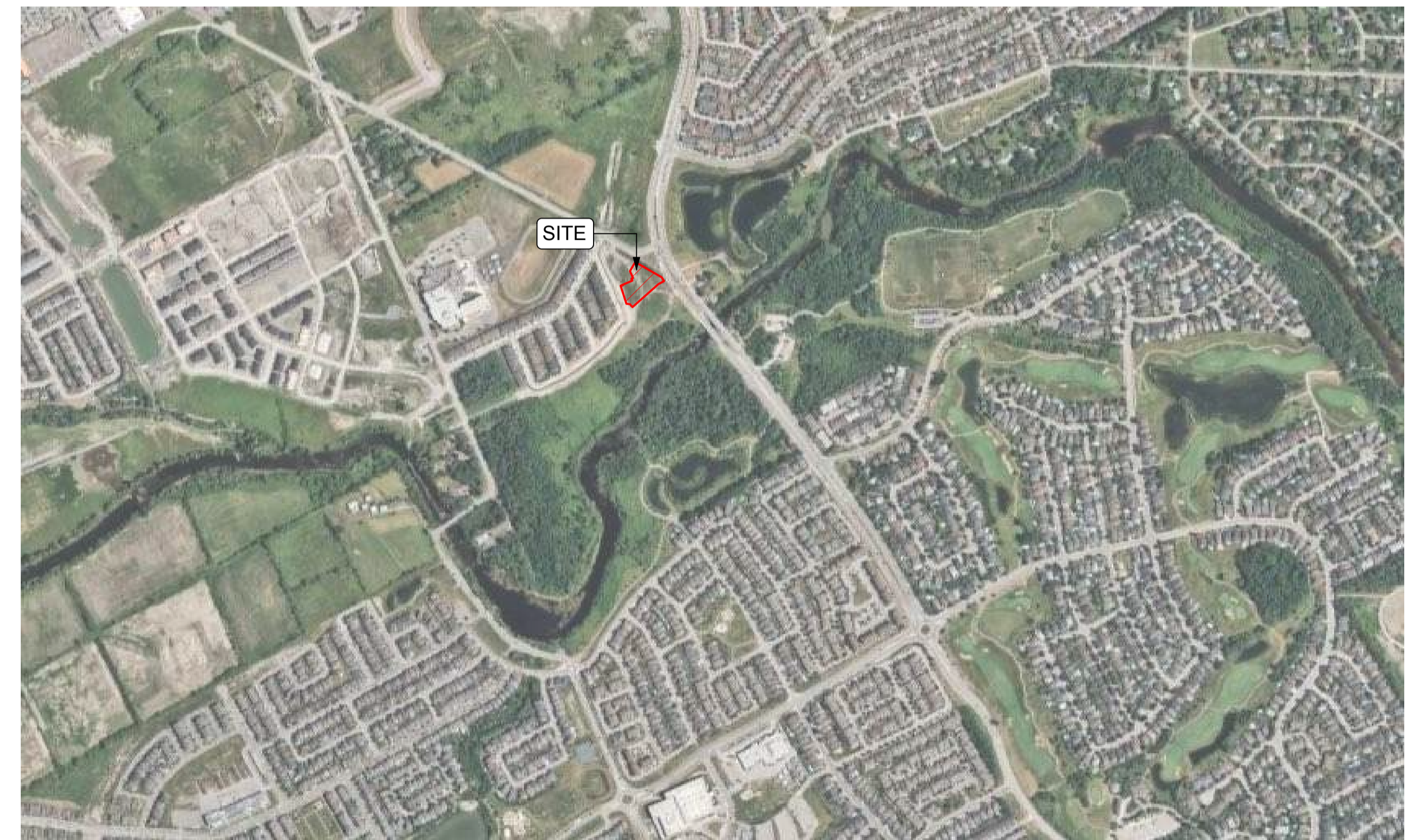
2026-05-07

DRAWING INDEX

Cover Sheet	L0-00
Landscape Plan	L1-01
Planting Plan	L1-02
Details	L2-01
Details	L2-02
Details	L2-03
Details	L2-04



202-950 GLADSTONE AVENUE
OTTAWA, ON K1Y 3E6
T 613 233 8579
F 613 233 4051
W LashleyLA.com
E Mail@LashleyLA.com



↑ KEY PLAN

JOCKVALE ROAD

LONGFIELDS DRIVE

PHASE 1

BRANCH STREET

GENERAL NOTES

1. CONTRACTOR IS RESPONSIBLE FOR CONFIRMING AND VERIFYING ALL DIMENSIONS ON SITE AND REPORT ANY DISCREPANCIES TO LANDSCAPE ARCHITECT.
2. DO NOT SCALE THIS DRAWING.
3. REPORT ANY DISCREPANCIES PRIOR TO COMMENCING WORK. NO RESPONSIBILITY IS BORN BY THE LANDSCAPE ARCHITECT FOR UNKNOWN SUBSURFACE CONDITIONS.
4. REINSTATE ALL AREAS AND ITEMS DAMAGED AS A RESULT OF CONSTRUCTION ACTIVITIES TO THE SATISFACTION OF THE LANDSCAPE ARCHITECT.
5. DRAWINGS MAY NOT BE USED FOR CONSTRUCTION UNTIL SIGNED BY LANDSCAPE ARCHITECT AS ISSUED FOR CONSTRUCTION.
6. THE ACCURACY OF THE POSITION OF UTILITIES IS NOT GUARANTEED.
7. INDIVIDUAL UTILITY CO. MUST BE CONTACTED FOR CONFIRMATION OF UTILITY EXISTENCE AND LOCATION PRIOR TO DIGGING.
8. THIS DRAWING IS AN INSTRUMENT OF SERVICE AND REQUIRES THE PERMISSION OF THE LANDSCAPE ARCHITECT FOR USE. COPYRIGHT IS RESERVED BY THE LANDSCAPE ARCHITECT, DAVID M. LASHLEY.



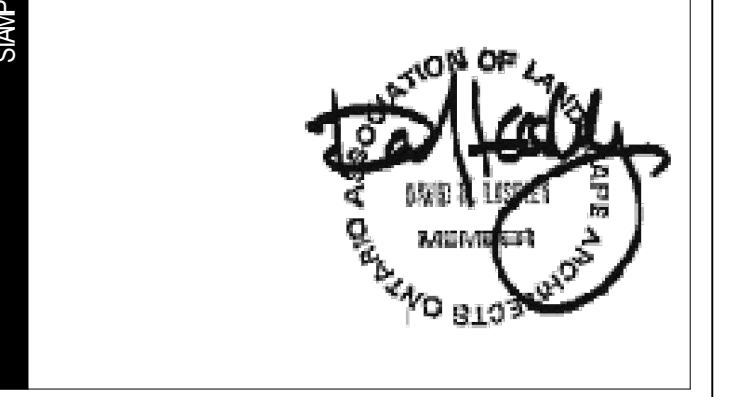
LASHLEY & ASSOCIATES
 202-950 GLADSTONE
 OTTAWA, ONTARIO
 CANADA
 K1Y 3E6
 T: 613-233-8579
 F: 613-233-4051

PROJECT
OCH - GEYSER PLACE
 3380 Jockvale Road,
 Ottawa, ON

CLIENT
OTTAWA COMMUNITY HOUSING
 39 Auriga Drive
 Ottawa, ON
 K2E 7Y8

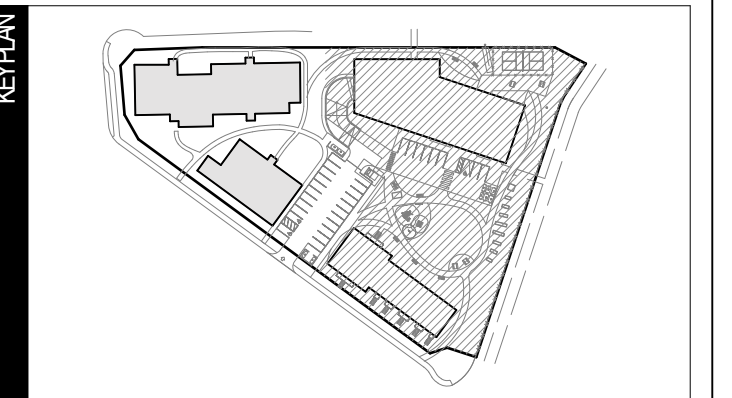
CONSULTANTS	ADDRESS
STRUCTURAL CUNLIFF & ASSOCIATES	1550 Carling Avenue, Suite 200 Ottawa, ON K1Z 8S8
CIVIL egis	115 Walgreen Road, Carleton Place, ON K0A 1L0
MECHANICAL & ELECTRICAL GWAL	1688 Woodward Drive, Ottawa, ON K2C 3R8
ARCHITECTURAL Lenny Michael	81 rue Metcalfe, bureau 310 Ottawa, ON K1P 6K7
PASSIVE HOUSE / ENERGY MODELLING Thornton Tomasetti	14 York Street, Suite 201 Portland, ME 04101
footprint	1600 Carling Avenue, Suite 530 Ottawa, ON K1Z 1G3

NOTES
 The contractor must verify all dimensions and communicate any discrepancies with the landscape architect before carrying out the work.
 This document remains the property of Lashley + Associates and should be used only for the specific use which it is intended.



TEAM	DRAWN BY	VERIFIED BY	APPROVED BY
	RJ	DL	DL

NO.	DATE	DESCRIPTION
A	2025-06-17	ISSUED FOR 30% CD
B	2025-07-11	ISSUED FOR 65% CD
C	2025-10-24	ISSUED FOR 95% CD
D	2025-11-14	ISSUED FOR PERMIT
E	2025-04-24	ISSUED FOR 100% REVIEW
F	2025-05-07	ISSUED FOR SPC REVIEW

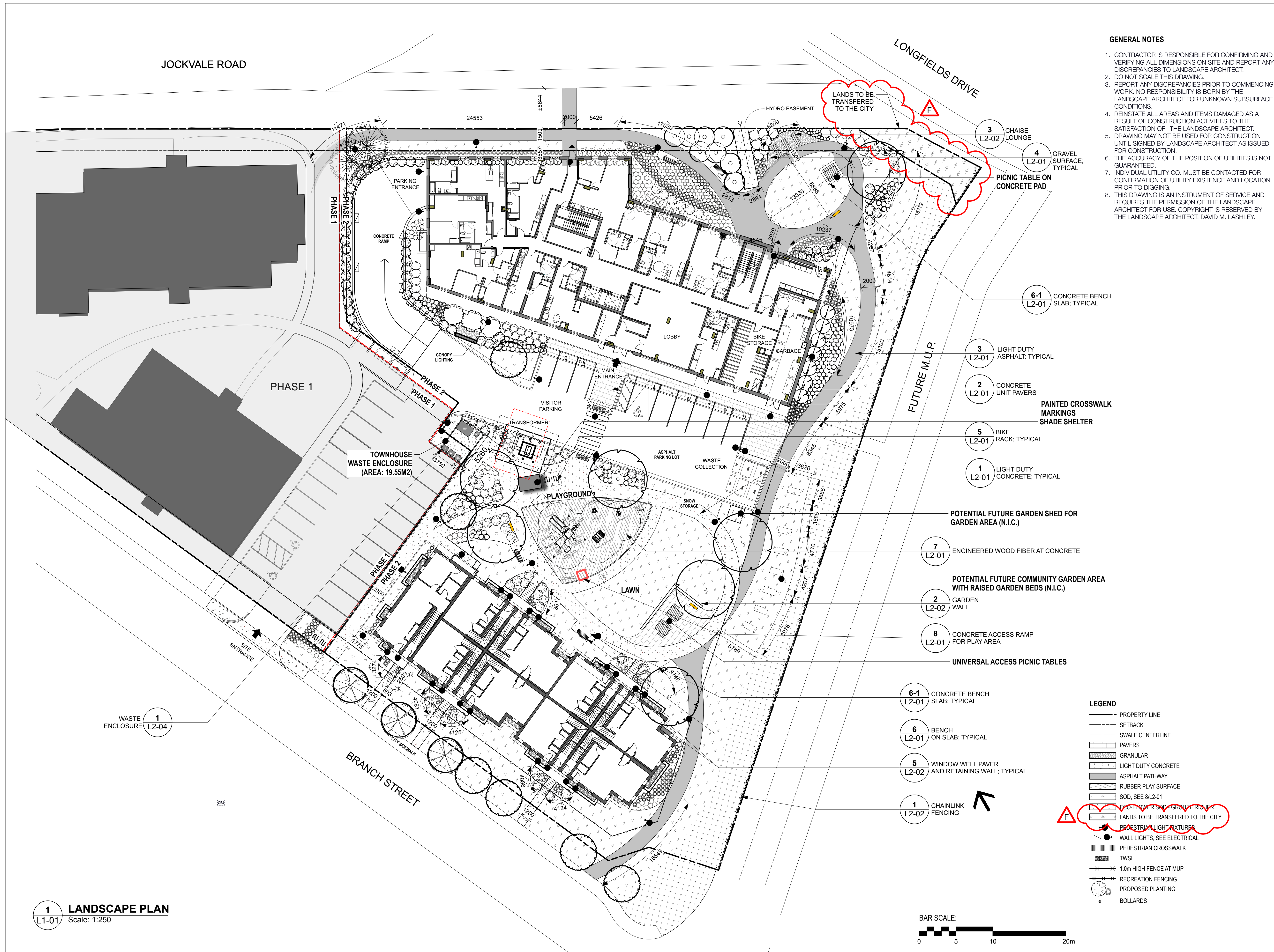


LANDSCAPE

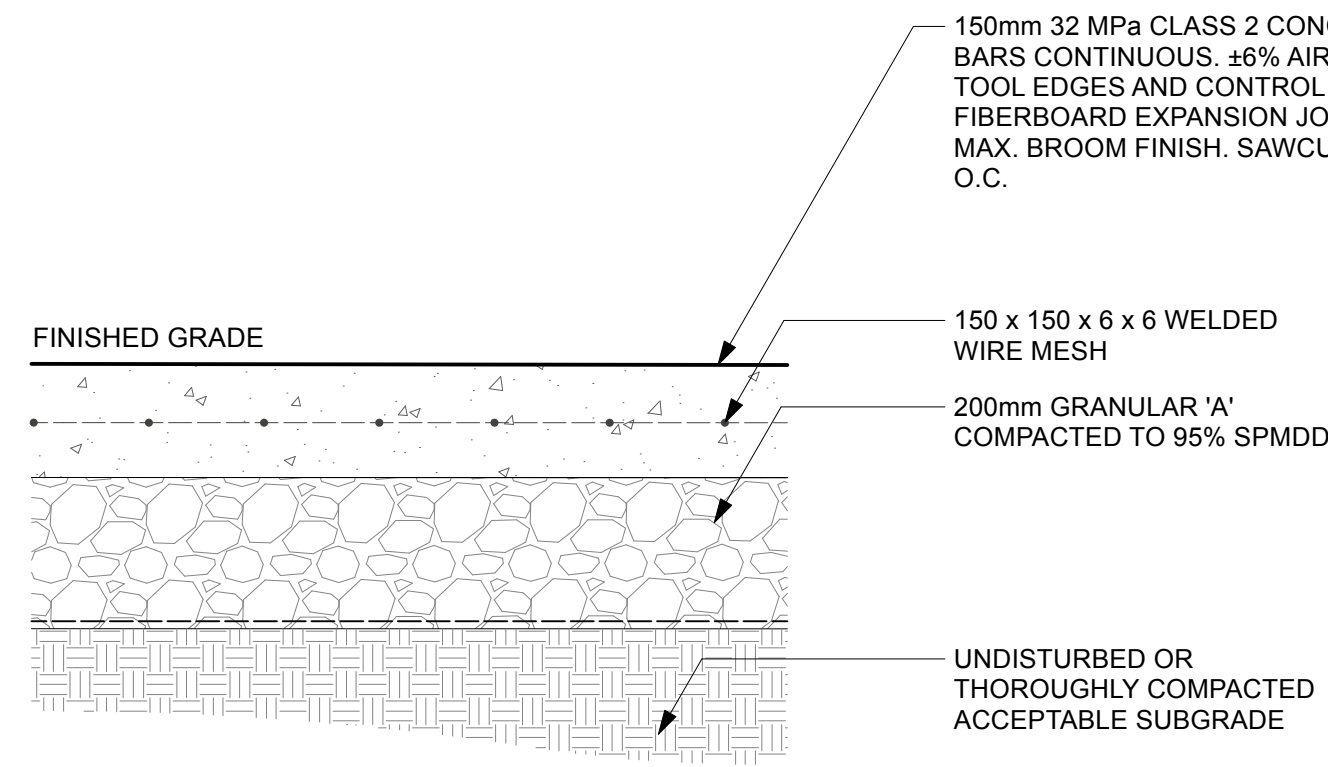
LANDSCAPE PLAN

SCALE: AS SHOWN

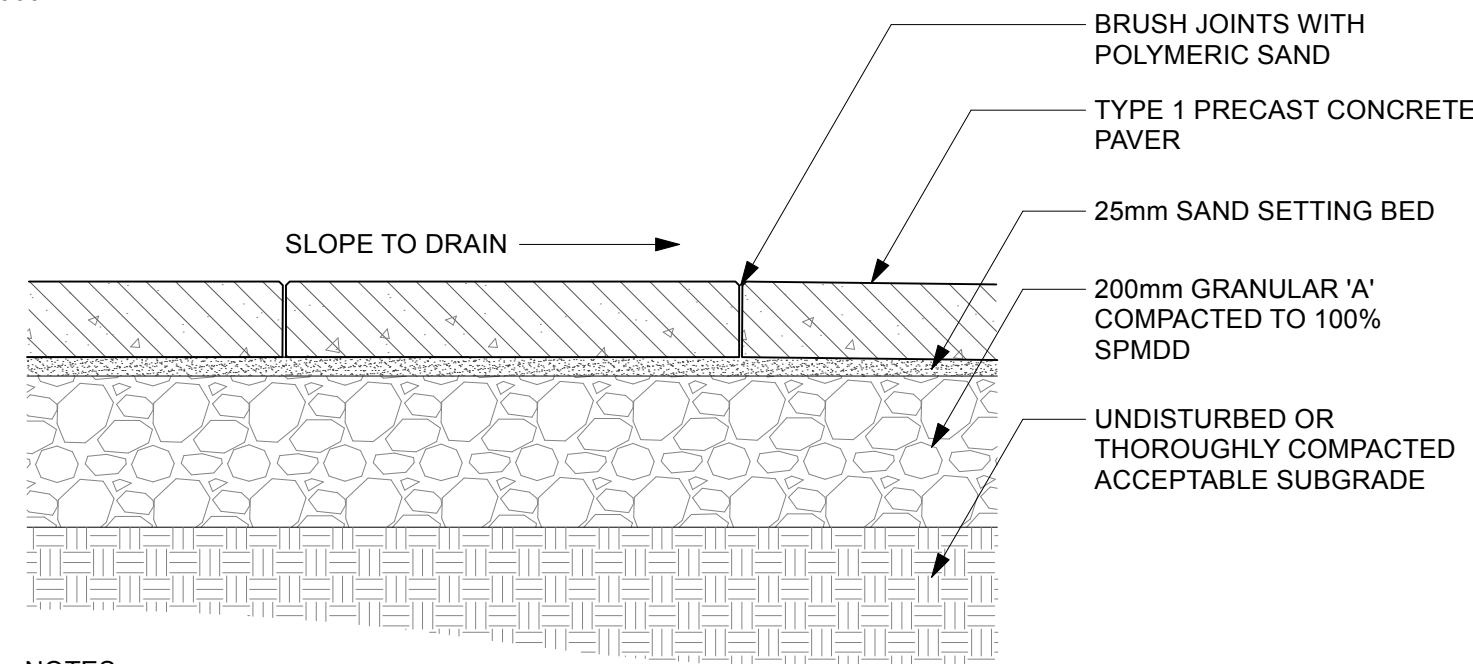
PROJECT 24883-1
 SHEET L1-01



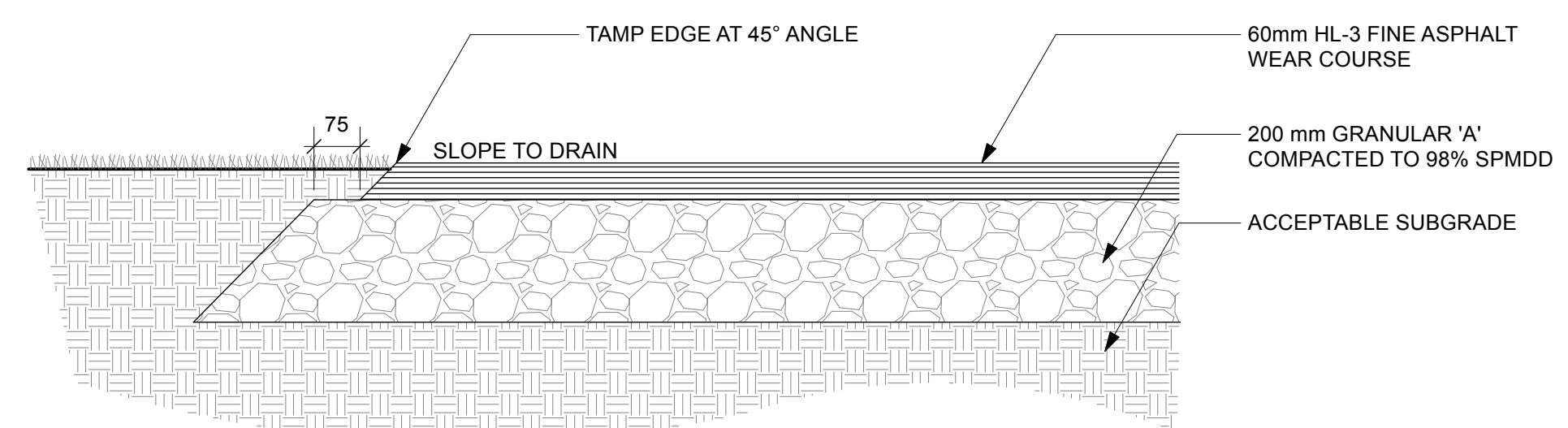
1 LANDSCAPE PLAN
 L1-01 Scale: 1:250



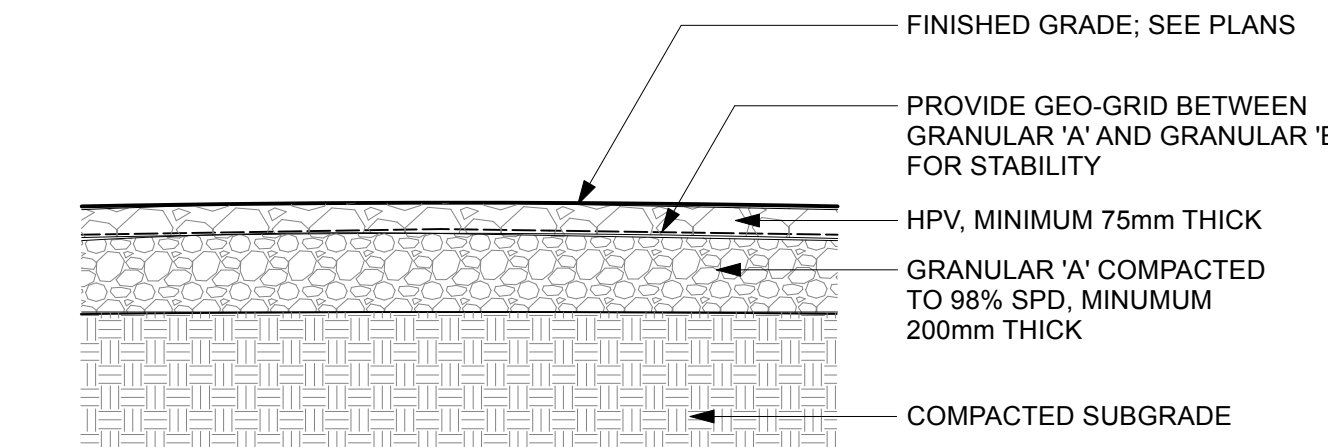
1 LIGHT DUTY CONCRETE PAVING
L2-01 Scale: 1:10



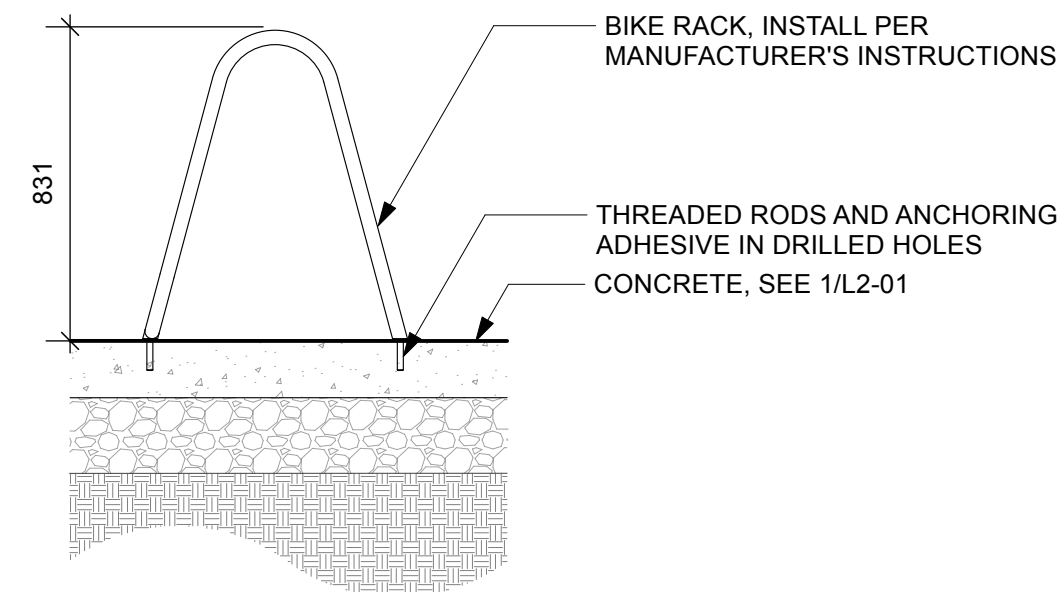
2 CONCRETE UNIT PAVERS
L2-01 Scale: 1:10



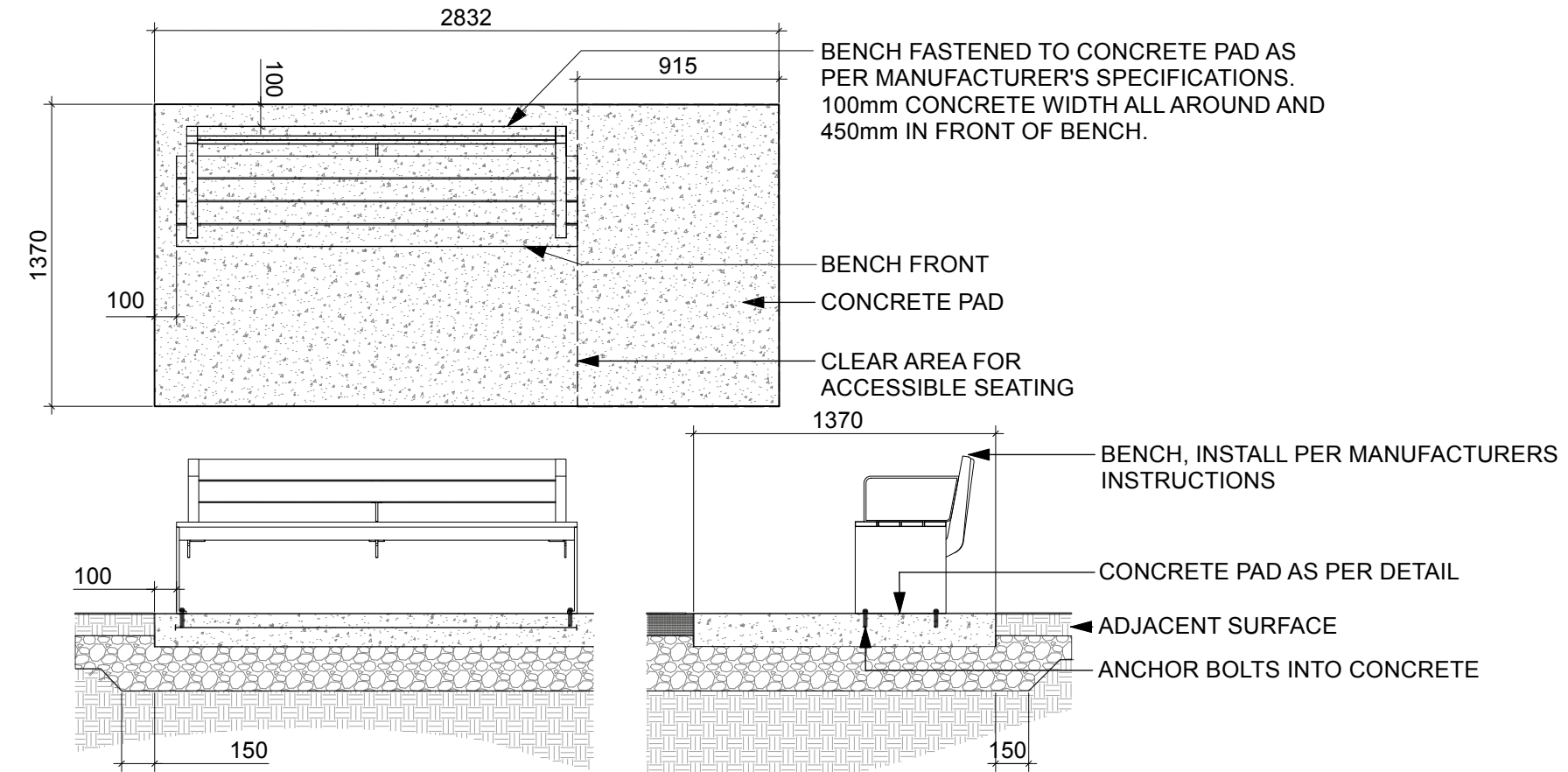
3 LIGHT DUTY ASPHALT PATHWAY
L2-01 Scale: 1:10



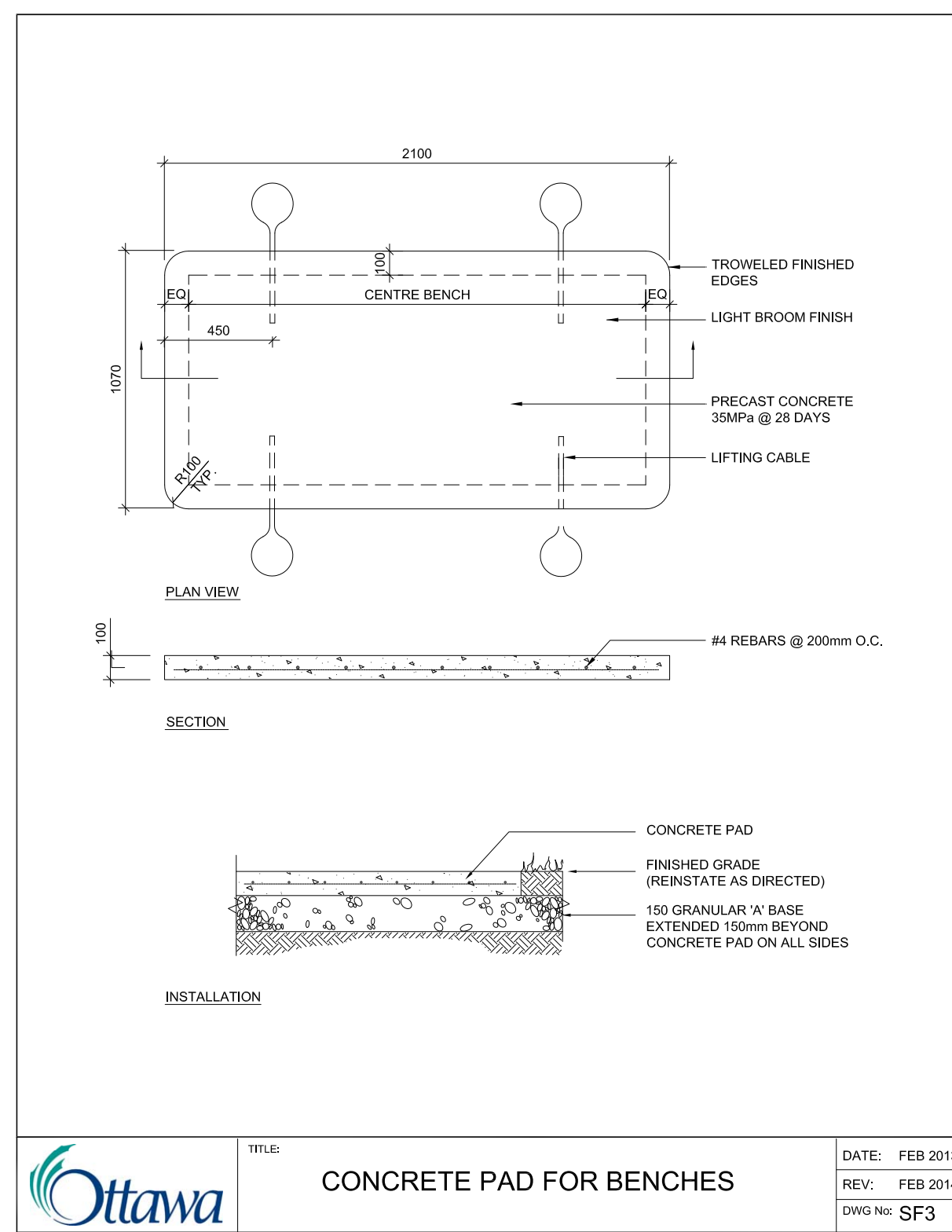
4 GRAVEL SURFACE
L2-01 Scale: 1:20



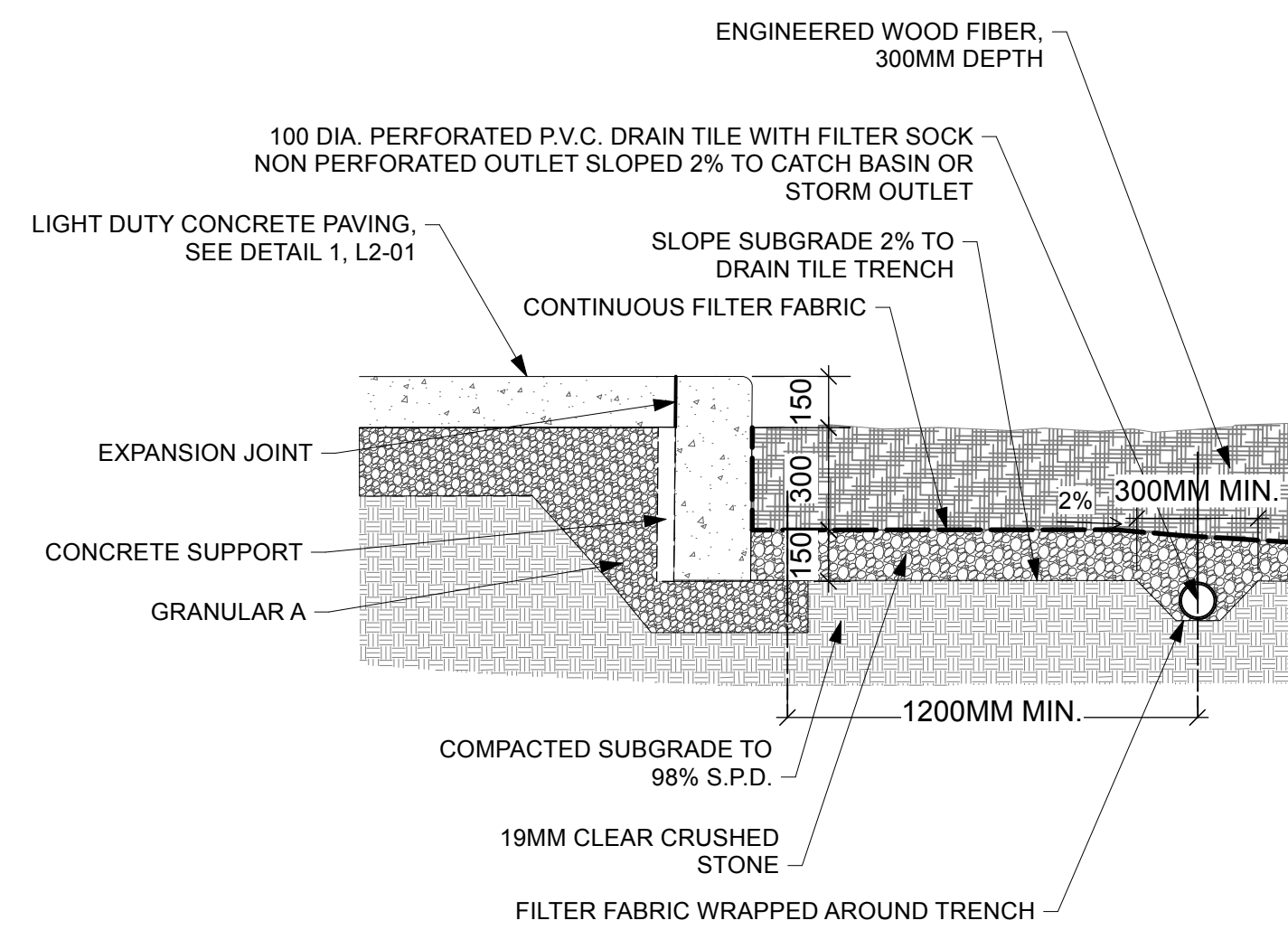
5 BIKE RACK
L2-01 Scale: 1:20



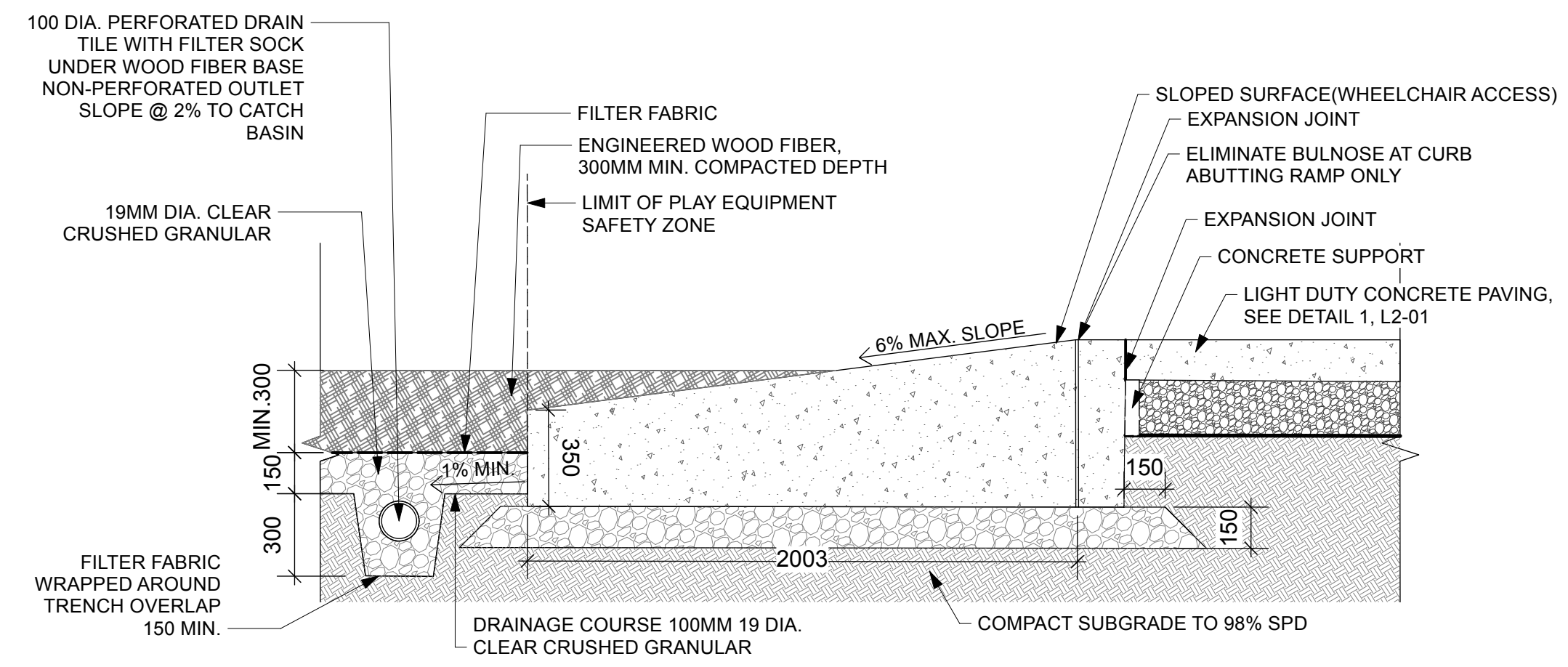
6 BENCH
L2-01 Scale: 1:30



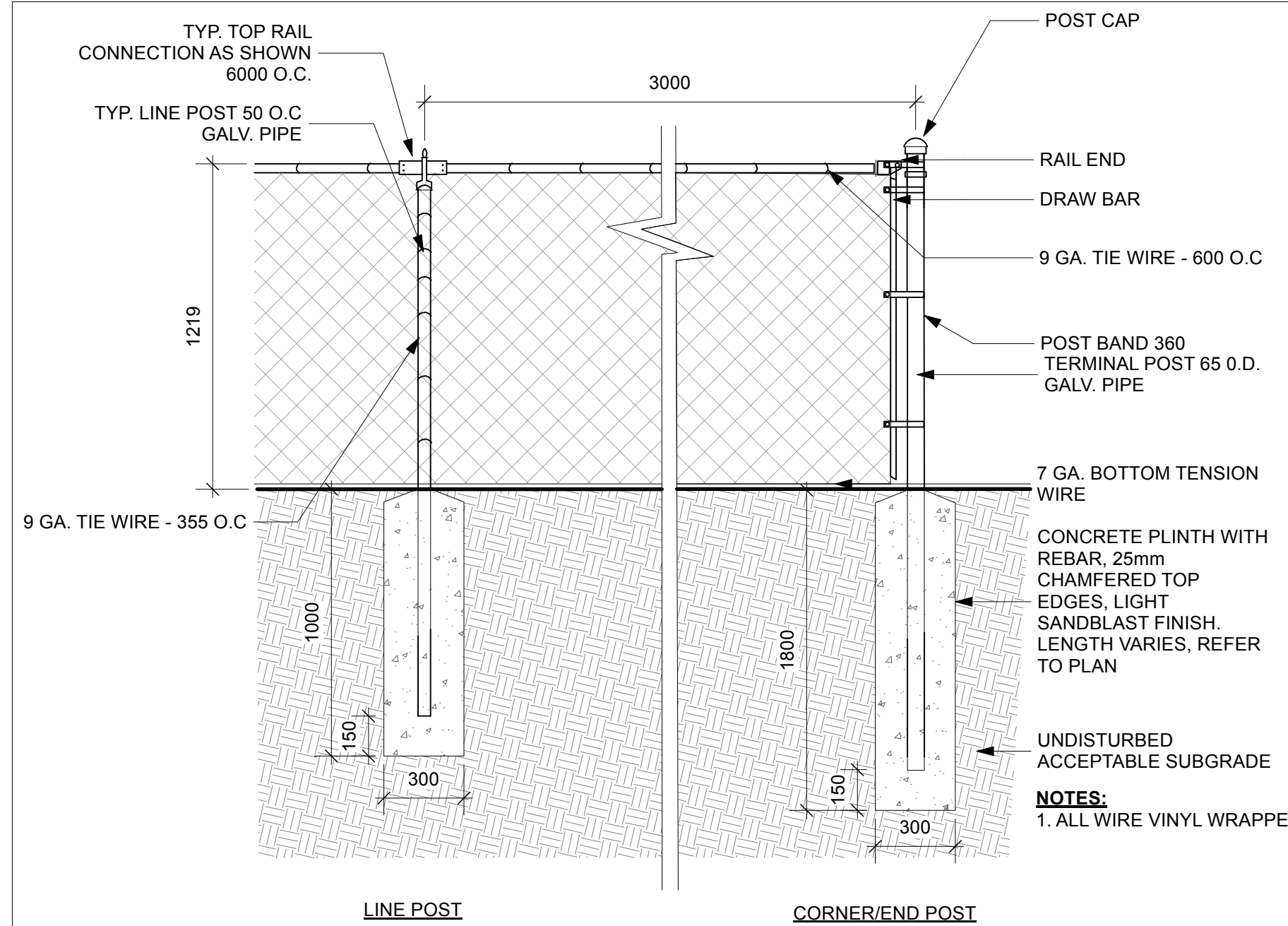
6-1 CONCRETE BENCH PAD
L2-01



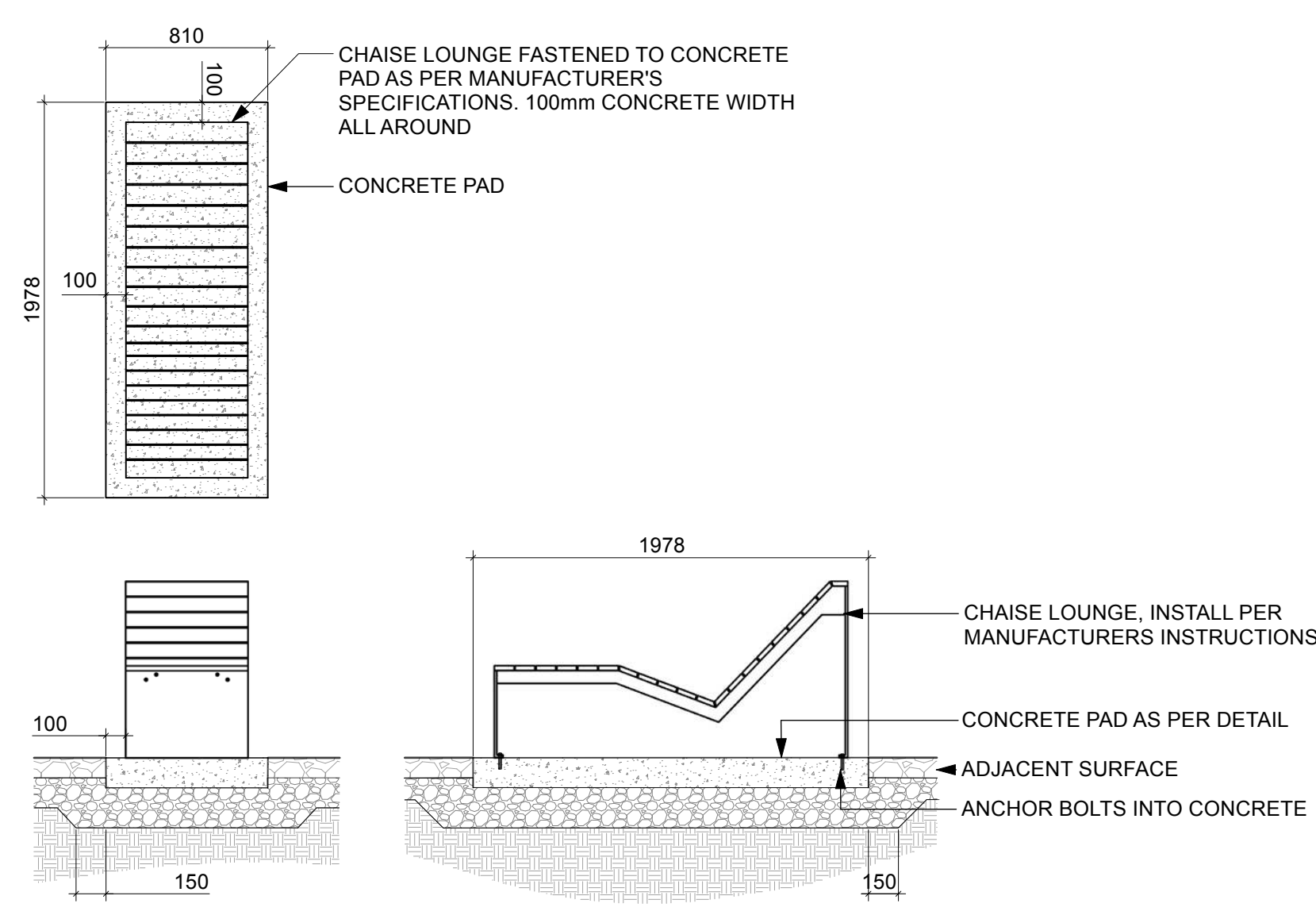
7 EWF AT CONCRETE
L2-01 Scale: 1:20



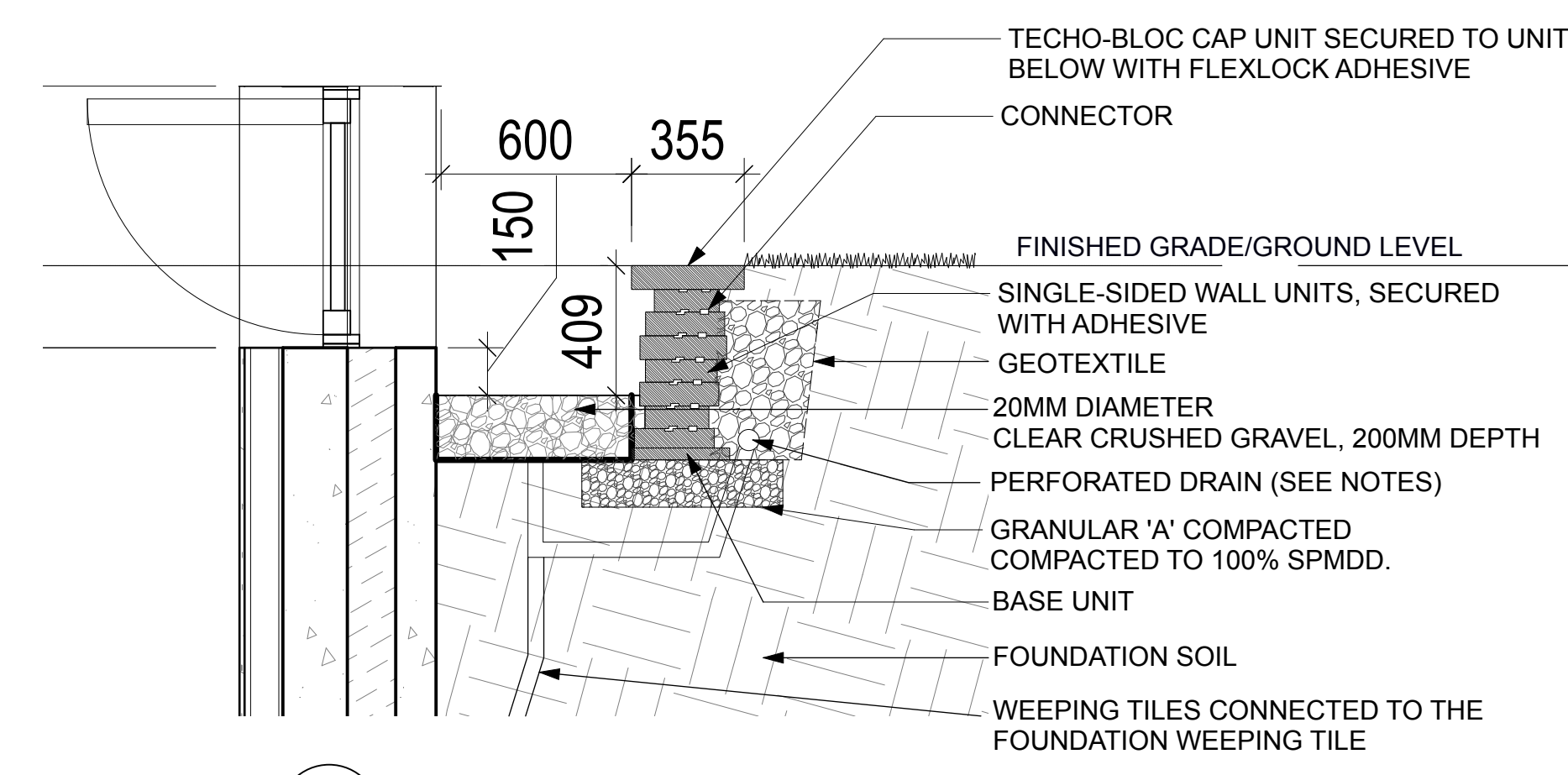
8 CONCRETE ACCESS RAMP FOR PLAY AREA
L2-01 Scale: 1:20



1 1.2m HIGH CHAINLINK FENCE
Scale: 1:20

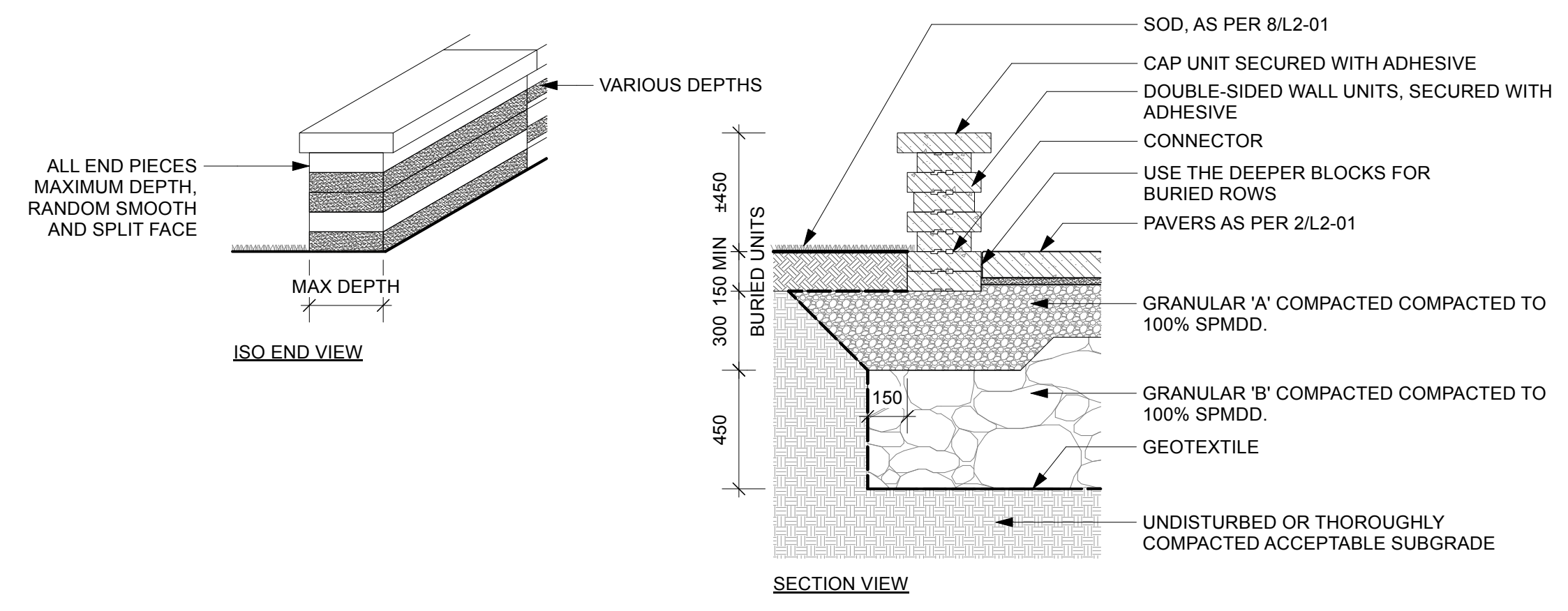


3 CHAISE LOUNGE
Scale: 1:30

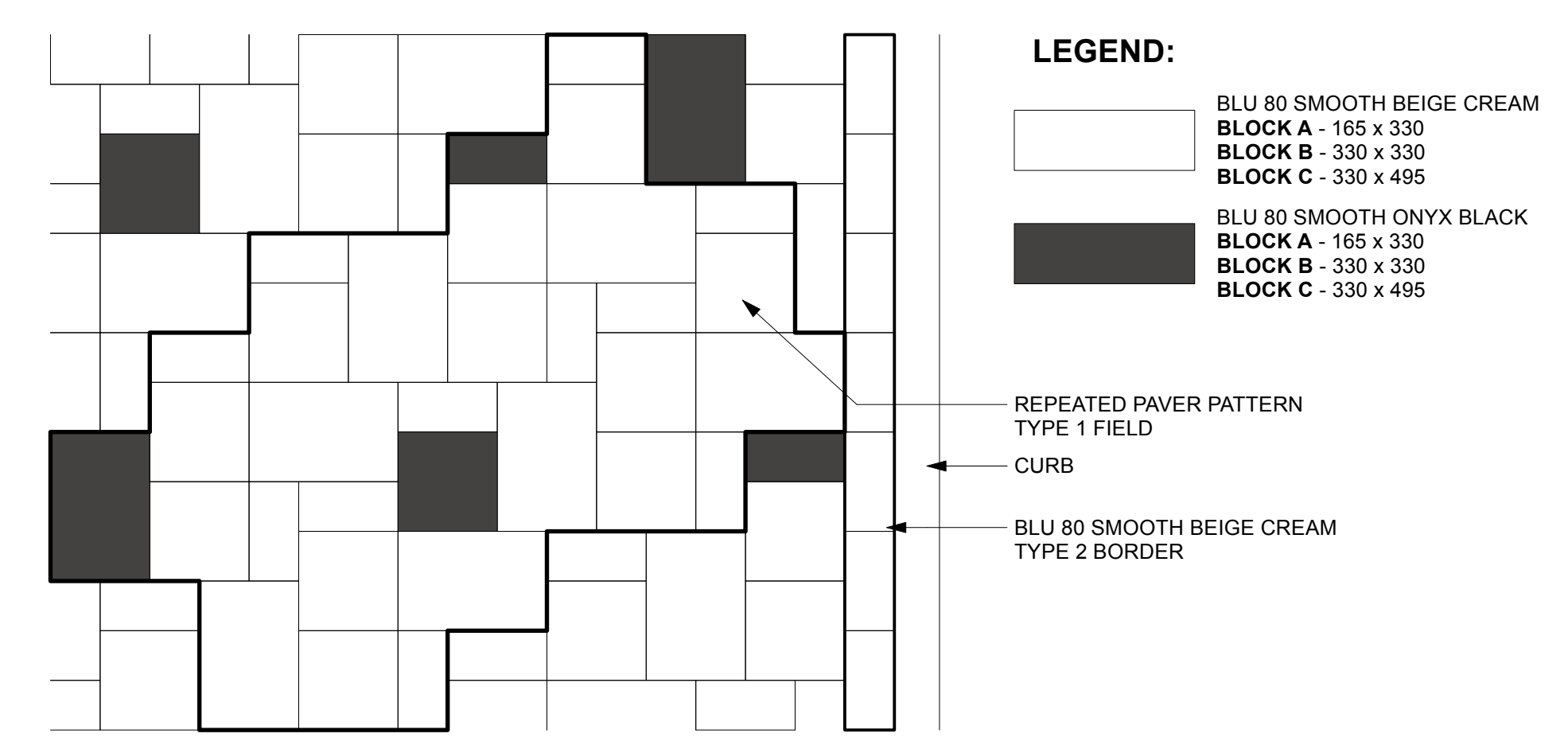


5 WINDOW WELL PAVER AND RETAINING WALL
Scale: 1:20

NOTES:
-REFER TO TECO-BLOC GRAPHIX WALL INSTALLATION GUIDE FOR WALL CONSTRUCTION DETAILS.
-DRAINAGE: ALL ELEMENTS RELATED TO DRAINAGE (GEOTEXTILE, CONNECTION TO DRAIN, HEIGHT OF DRAIN, ETC) SHOULD BE DESIGNED AND DETAILED WITH THE ENGINEER.



2 GARDEN WALL AT PATIO
Scale: 1:20



4 PAVER PATTERN
Scale: 1:20

PROJECT
OCH - GEYSER PLACE
3380 Jockvale Road,
Ottawa, ON

CLIENT
OTTAWA COMMUNITY HOUSING
39 Auriga Drive
Ottawa, ON
K2E 7Y8

CONSULTANTS

STRUCTURAL
CUNLIFFE & ASSOCIATES
1550 Carling Avenue, Suite 200
Ottawa, ON K1Z 8S8

CIVIL
egis
115 Walgreen Road,
Ottawa, ON K0A 1L0

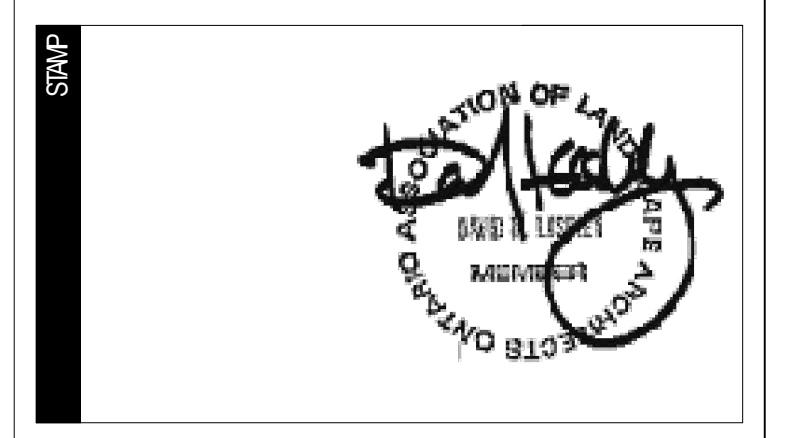
MECHANICAL & ELECTRICAL
GWAL
1688 Woodward Drive,
Ottawa, ON K2C 3R8

ARCHITECTURAL
LemayMichael
81 rue Metcalfe, bureau 310
Ottawa, ON K1P 6K7

PASSIVE HOUSE / ENERGY MODELLING
Thornton Tomasetti
14 York Street, Suite 201
Portland, ME 04101

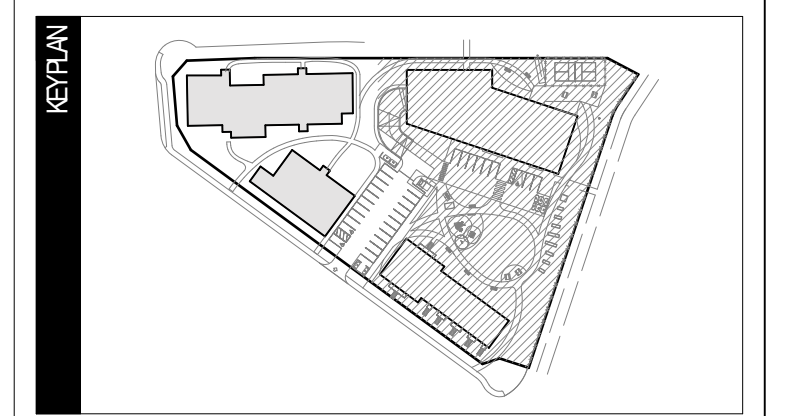
footprint
1600 Carling Avenue, Suite 530
Ottawa, ON K1Z 1G3

NOTES
The contractor must verify all dimensions and communicate any discrepancies with the landscape architect before carrying out the work.
This document remains the property of Lashley + Associates and should be used only for the specific use which it is intended.



TEAM	DRAWN BY	VERIFIED BY	APPROVED BY
	RJ	DL	DL

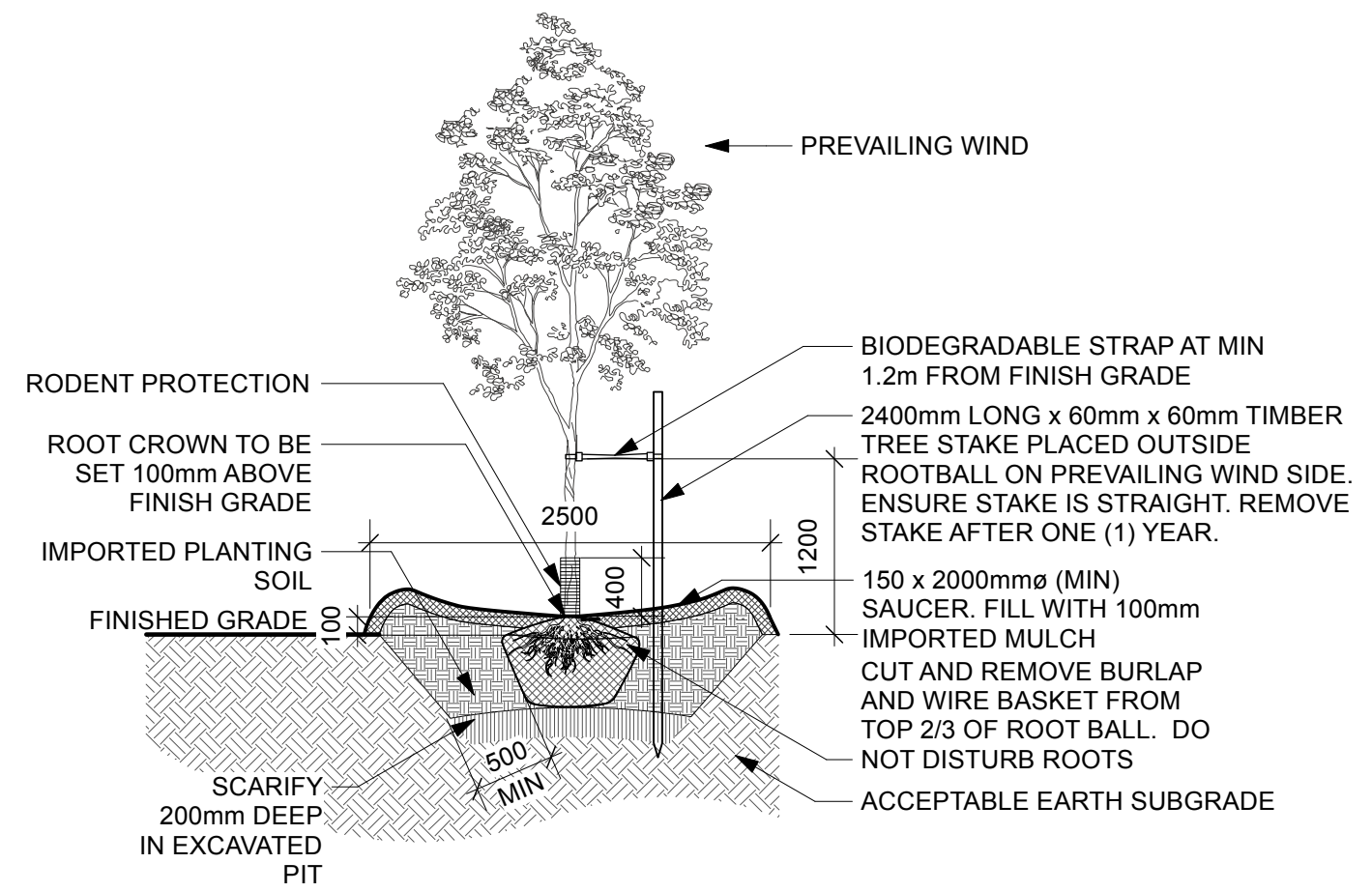
PRINTS/REVISIONS	NO.	DATE	DESCRIPTION
	A	2025-06-17	ISSUED FOR 30% CD
	B	2025-07-11	ISSUED FOR 65% CD
	C	2025-10-24	ISSUED FOR 95% CD
	D	2025-11-14	ISSUED FOR PERMIT
	E	2025-04-24	ISSUED FOR 100% REVIEW
	F	2025-05-07	ISSUED FOR SPC REVIEW



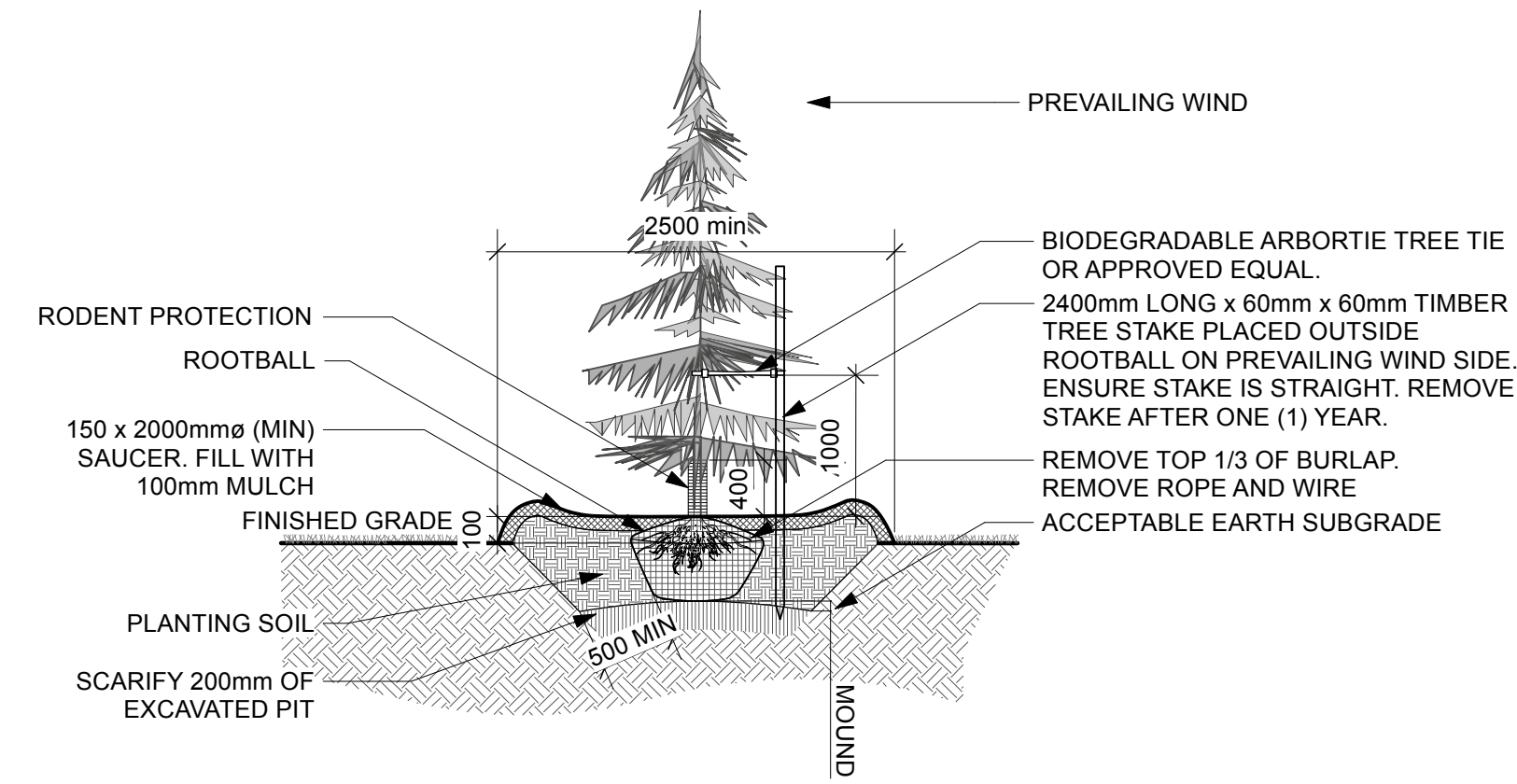
FIELD
LANDSCAPE

DRAWING
DETAILS
SCALE: AS SHOWN

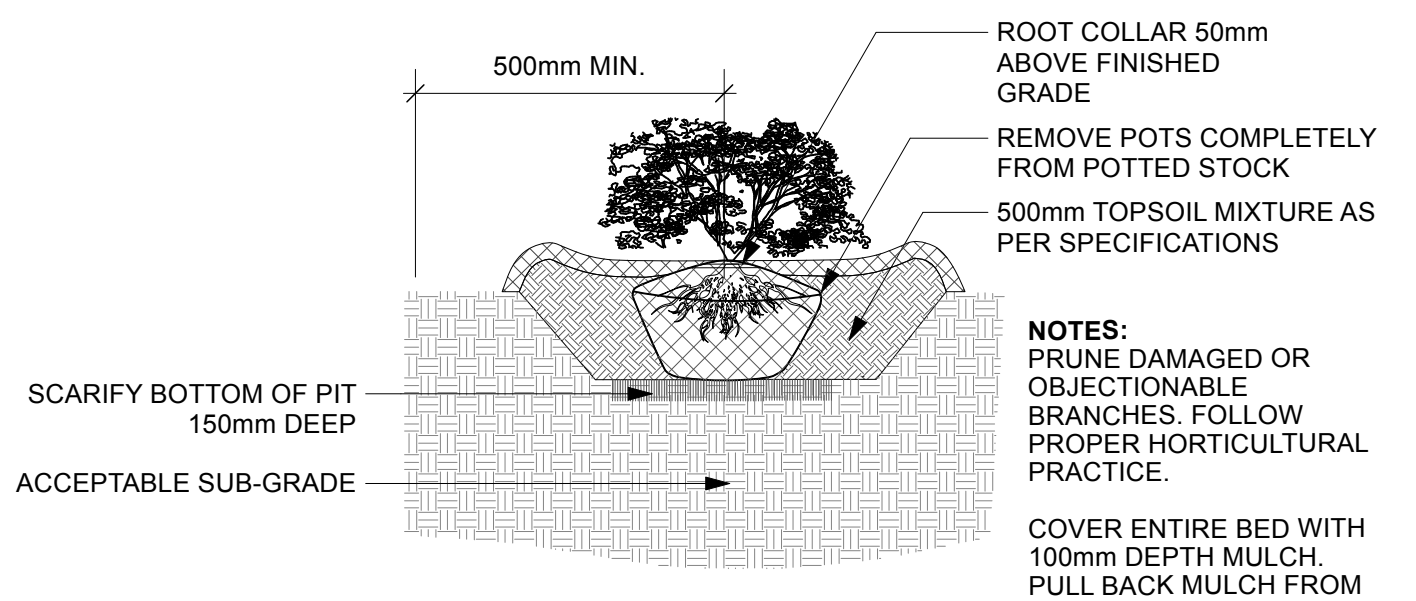
PROJECT
24883-1
PRICE
L2-02



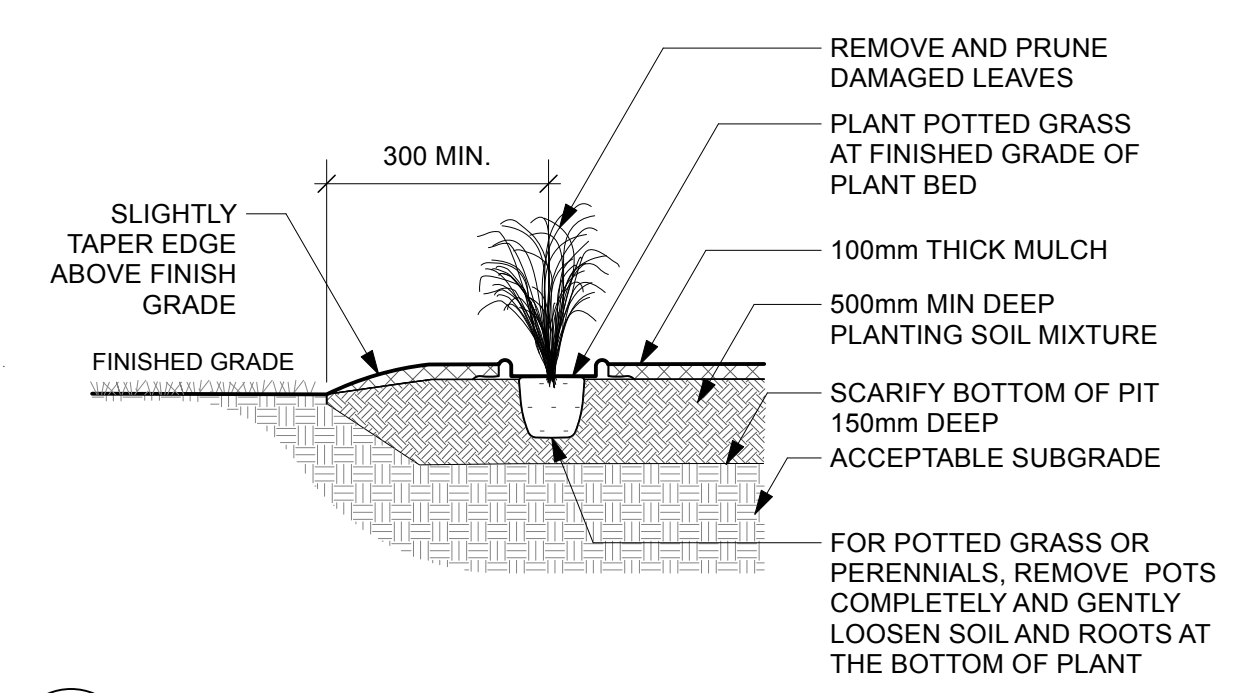
1 TYPICAL DECIDUOUS TREE PLANTING
L2-03 Scale: 1:50



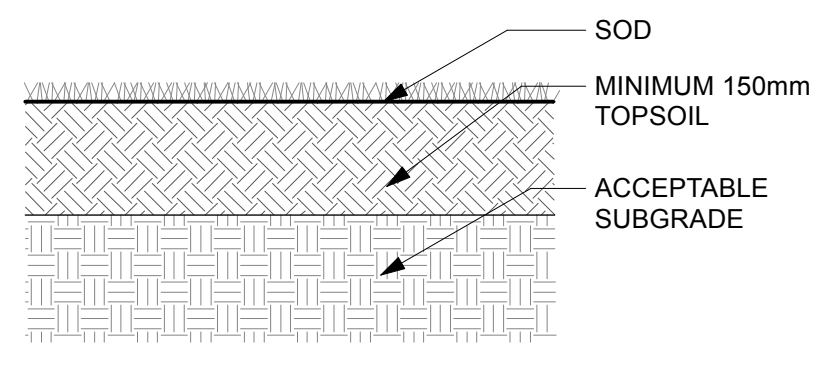
2 TYPICAL CONIFEROUS TREE PLANTING
L2-03 Scale: 1:50



3 SHRUB PLANTING
L2-03 Scale: 1:20



4 GRASS / PERENNIAL PLANTING
L2-03 Scale: 1:20



5 SOD PLANTING
L2-03 Scale: 1:10

PROJECT
OCH - GEYSER PLACE
3380 Jockvale Road,
Ottawa, ON

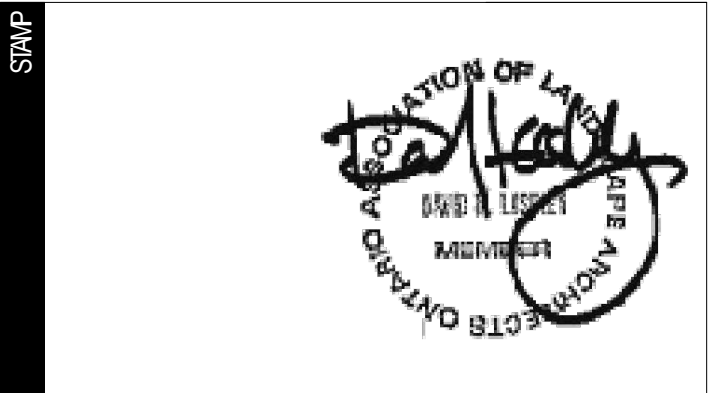
CLIENT
OTTAWA COMMUNITY HOUSING
39 Auriga Drive
Ottawa, ON
K2E 7Y8

- CONSULTANTS**
- STRUCTURAL**
CUNLIFFE & ASSOCIATES
1550 Carling Avenue, Suite 200
Ottawa, ON K1Z 8S8
 - CIVIL**
egis
115 Walgreen Road,
Carp, ON K0A 1L0
 - MECHANICAL & ELECTRICAL**
GWAL
1688 Woodward Drive,
Ottawa, ON K2C 3R8
 - ARCHITECTURAL**
LemayMichael
81 rue Metcalfe, bureau 310
Ottawa, ON K1P 6K7
 - PASSIVE HOUSE / ENERGY MODELLING**
Thornton Tomasetti
14 York Street, Suite 201
Portland, ME 04101
 - footprint
1600 Carling Avenue, Suite 530
Ottawa, ON K1Z 1G3

NOTES

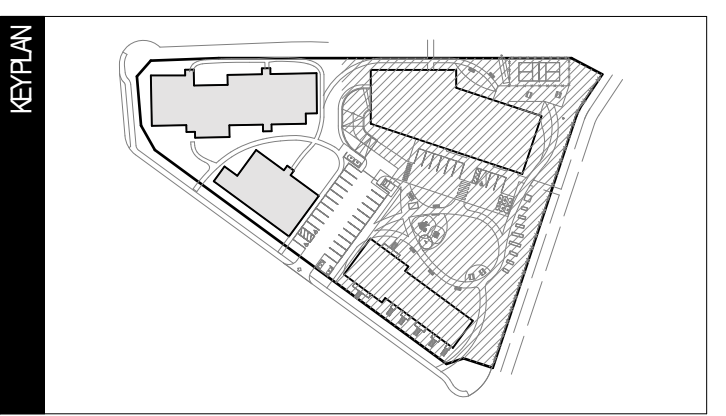
The contractor must verify all dimensions and communicate any discrepancies with the landscape architect before carrying out the work.

This document remains the property of Lashley + Associates and should be used only for the specific use which it is intended.



TEAM	DRAWN BY	VERIFIED BY	APPROVED BY
	RJ	DL	DL

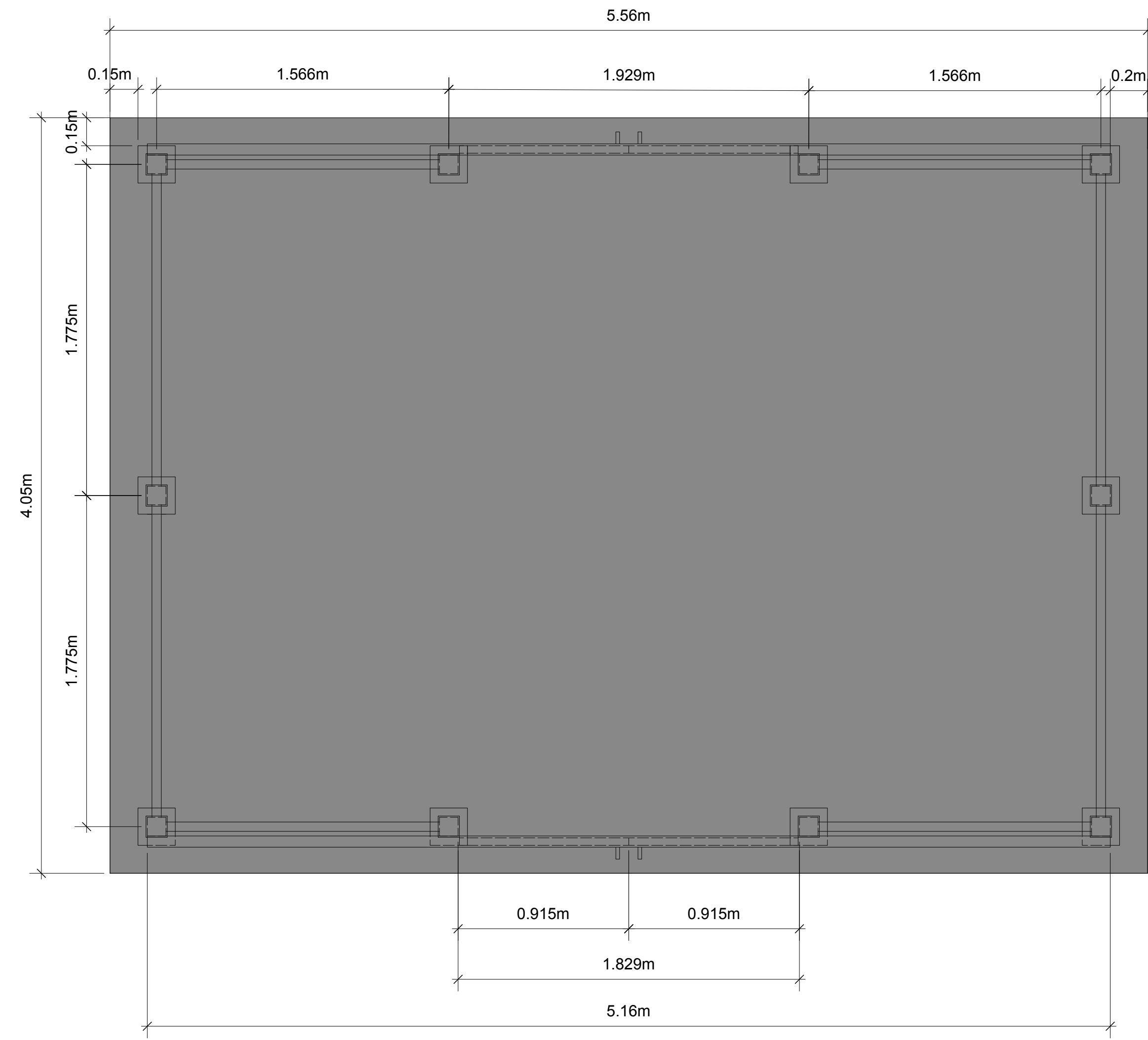
PRINTS/REVISIONS	NO.	DATE	DESCRIPTION
	A	2025-06-17	ISSUED FOR 30% CD
	B	2025-07-11	ISSUED FOR 65% CD
	C	2025-10-24	ISSUED FOR 95% CD
	D	2025-11-14	ISSUED FOR PERMIT
	E	2025-04-24	ISSUED FOR 100% REVIEW
	F	2025-05-07	ISSUED FOR SPC REVIEW



FIELD
LANDSCAPE

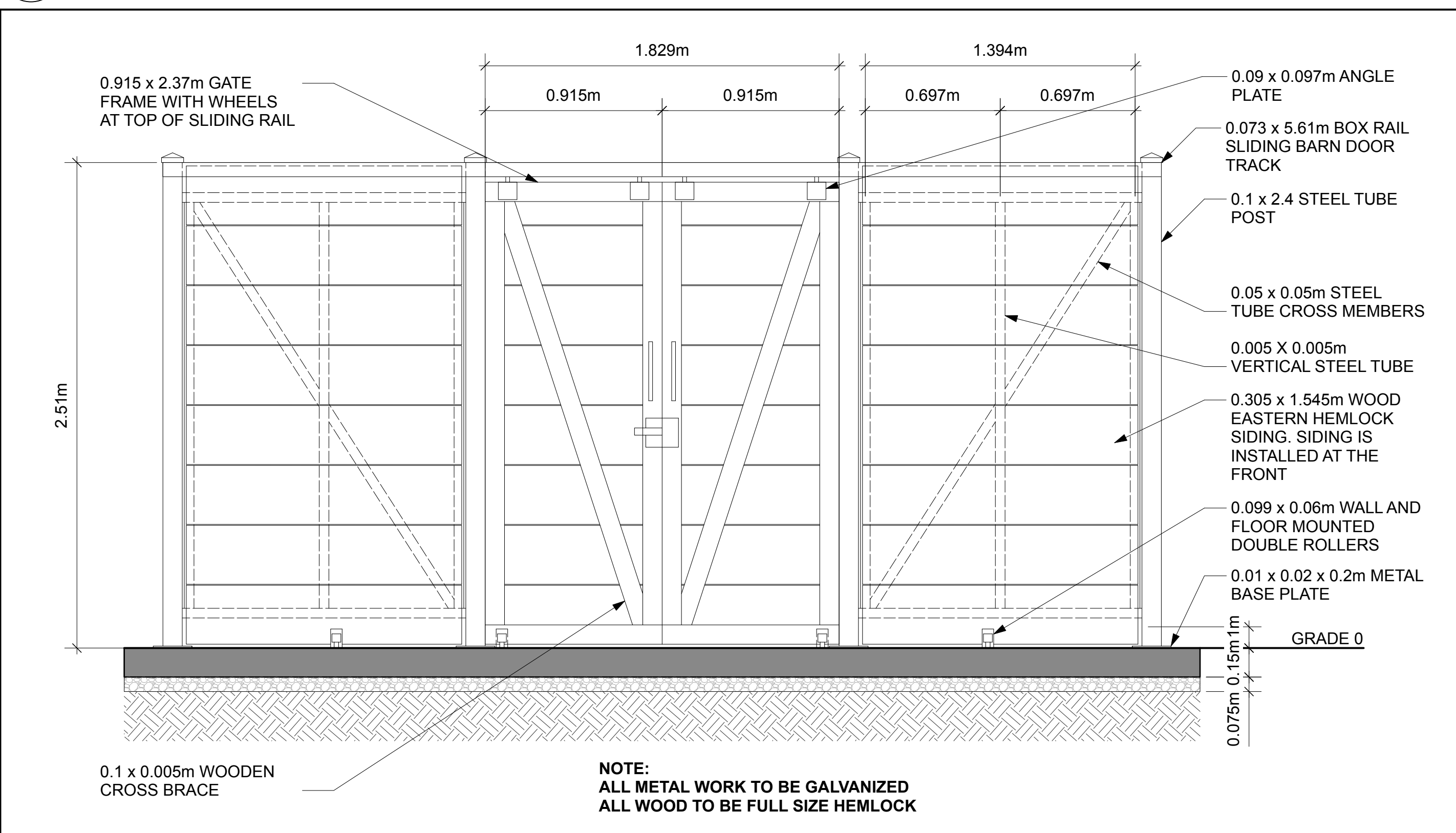
DRAWING
DETAILS
SCALE: AS SHOWN

PROJECT
24883-1
PRICE
L2-03



NOTE:
ALL METAL WORK TO BE GALVANIZED
ALL WOOD TO BE FULL SIZE HEMLOCK

1 PLAN VIEW
Scale: 1:20



NOTE:
ALL METAL WORK TO BE GALVANIZED
ALL WOOD TO BE FULL SIZE HEMLOCK

2 SOUTH ELEVATION
Scale: 1:20

1 WASTE ENCLOSURE
L2-04 Scale:

DRAFT

CONTRACTOR TO PROVIDE SHOP
DRAWINGS FOR THE GARBAGE ENCLOSURE

3 EAST ELEVATION
Scale: 1:20



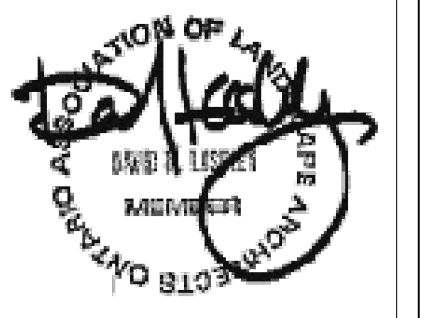
LASHLEY & ASSOCIATES
202-950 GLADSTONE
OTTAWA, ONTARIO
CANADA
K1Y 3E6
T: 613-233-8579
F: 613-233-4051

PROJECT
OCH - GEYSER PLACE
3380 Jockvale Road,
Ottawa, ON

CLIENT
OTTAWA COMMUNITY HOUSING
39 Auriga Drive
Ottawa, ON
K2E 7Y8

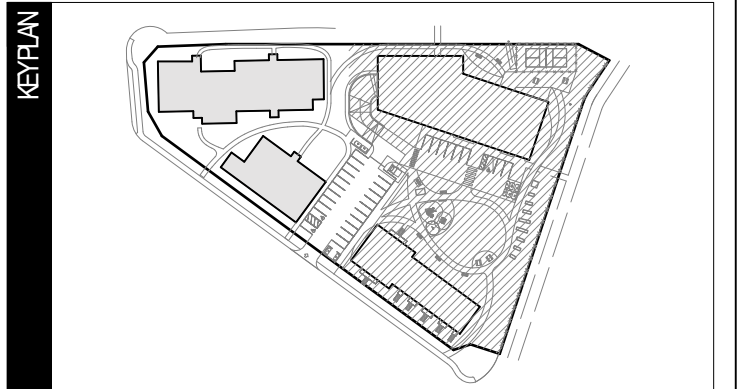
- CONSULTANTS
- STRUCTURAL: CUNLIFFE & ASSOCIATES, 1550 Carling Avenue, Suite 200, Ottawa, ON K1Z 8S8
 - CIVIL: egis, 115 Walgreen Road, Carp, ON K0A 1L0
 - MECHANICAL & ELECTRICAL: GWAL, 1688 Woodward Drive, Ottawa, ON K2C 3R8
 - ARCHITECTURAL: LemayMichael, 81 rue Metcalfe, bureau 310, Ottawa, ON K1P 6K7
 - PASSIVE HOUSE / ENERGY MODELLING: Thornton Tomasetti, 14 York Street, Suite 201, Portland, ME 04101
 - footprint, 1600 Carling Avenue, Suite 530, Ottawa, ON K1Z 1G3

NOTES
The contractor must verify all dimensions and communicate any discrepancies with the landscape architect before carrying out the work.
This document remains the property of Lashley + Associates and should be used only for the specific use which it is intended.



TEAM	DRAWN BY	VERIFIED BY	APPROVED BY
	RJ	DL	DL

NO.	DATE	DESCRIPTION
A	2025-06-17	ISSUED FOR 30% CD
B	2025-07-11	ISSUED FOR 65% CD
C	2025-10-24	ISSUED FOR 95% CD
D	2025-11-14	ISSUED FOR PERMIT
E	2025-04-24	ISSUED FOR 100% REVIEW
F	2025-05-07	ISSUED FOR SPC REVIEW



FIELD
LANDSCAPE

DRAWING
DETAILS

SCALE: AS SHOWN

PROJECT
24883-1
RCE
L2-04