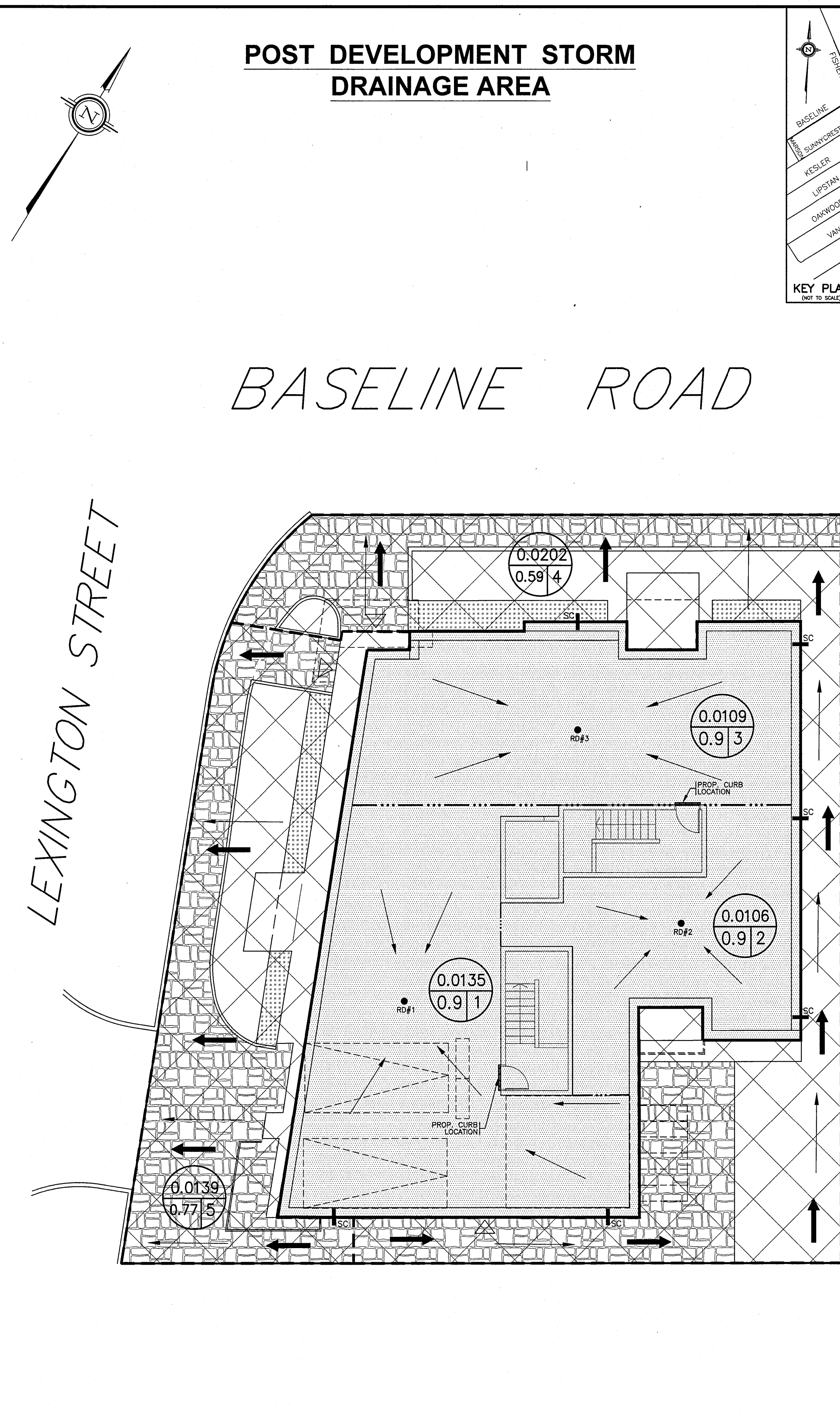
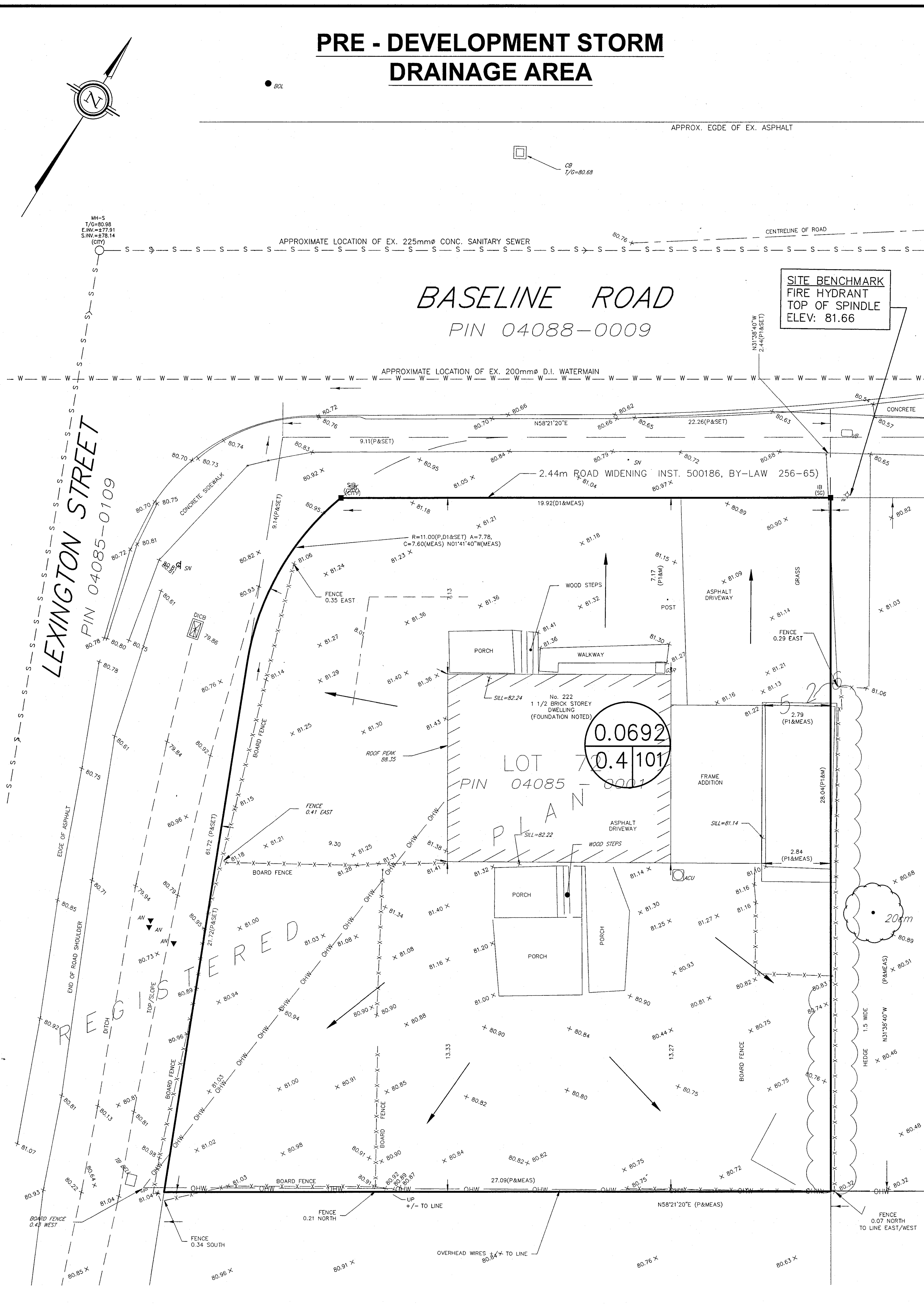
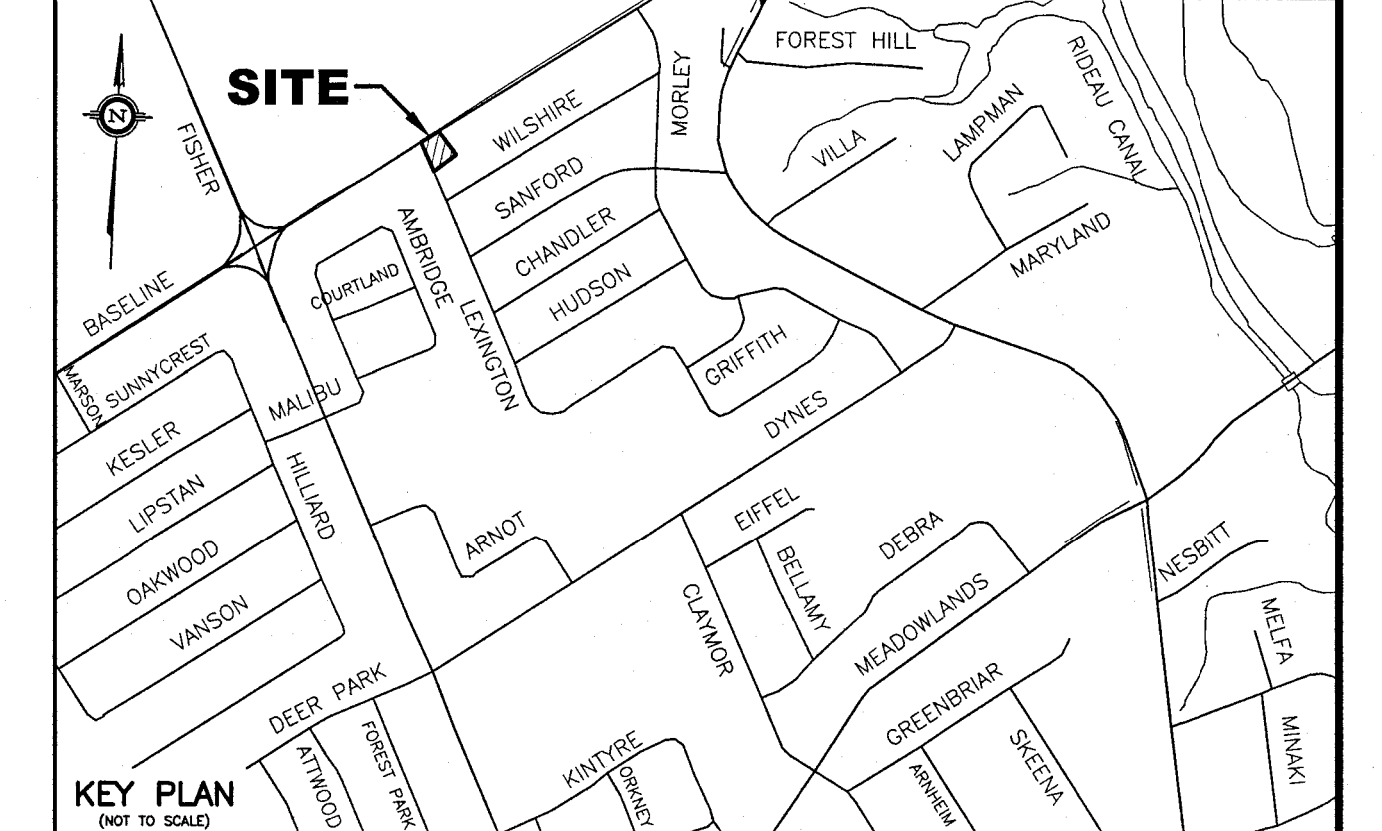


PRE - DEVELOPMENT STORM DRAINAGE AREA

POST DEVELOPMENT STORM DRAINAGE AREA



- LEGEND**
- RD#1 PROPOSED ROOF DRAIN NUMBER AND LOCATION
 - SC PROPOSED ROOF SCUPPER LOCATION
 - PROPOSED HIGH RIDGE LINE
 - 0.03 / 0.91 DRAINAGE AREA IN HECTARES / DRAINAGE NODE NUMBER
 - COEFFICIENT OF RUNOFF
 - ▨ UN-CONTROLLED DRAINAGE AREA
 - ▩ CONTROLLED DRAINAGE AREA
 - DENOTES PROPOSED OVERLAND FLOW ROUTE

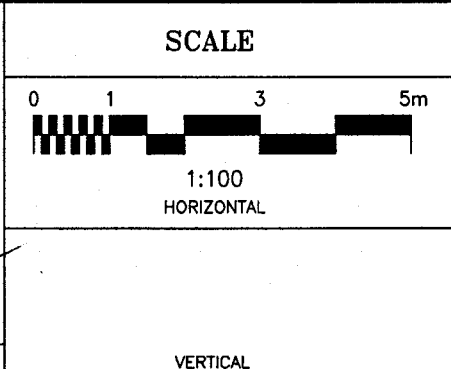
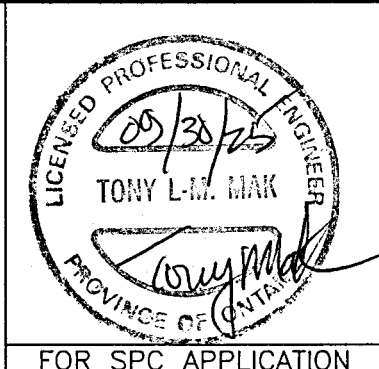
- NOTES**
- NODE #1, NODE #2 AND NODE #3 REPRESENTS BUILDING ROOF AREA (SWM CONTROLLED AREA)
 - NODE #4 REPRESENTS UNCONTROLLED DRAINAGE AREA
 - NODE #101 REPRESENTS PRE-DEVELOPMENT DATA.

G. Wildman

GERALDINE WILDMAN
MANAGER, DEVELOPMENT REVIEW SOUTH
PLANNING, DEVELOPMENT AND BUILDING SERVICES
DEPARTMENT, CITY OF OTTAWA

APPROVED
By wildmange at 12:53 pm, Apr 21, 2026

No.	REVISION	DATE	BY
2	REVISIONS AS PER PLANNERS REVIEW COMMENTS OF SEPTEMBER 29, 2025	09/30/25	TLM
1	REVISIONS AS PER ARCHITECT'S LATEST REVISED SITE PLAN RECEIVED ON JULY 14, 2025 AND CITY'S REVIEW COMMENTS OF JUNE 10, 2025	09/26/25	TLM



DESIGN	T.L.M.
CHECKED	T.L.M.
DRAWN BY	P.M.
CHECKED	T.L.M.
APPROVED	T.L.M.

PROJECT
222 BASELINE ROAD
PART OF LOT 72
REGISTERED PLAN 526
CITY OF OTTAWA

DRAWING TITLE
STORM DRAINAGE AREA PLAN

		PROJECT No.	DATE	DRAWING No.
		824-74	SEPTEMBER 2024	D-1