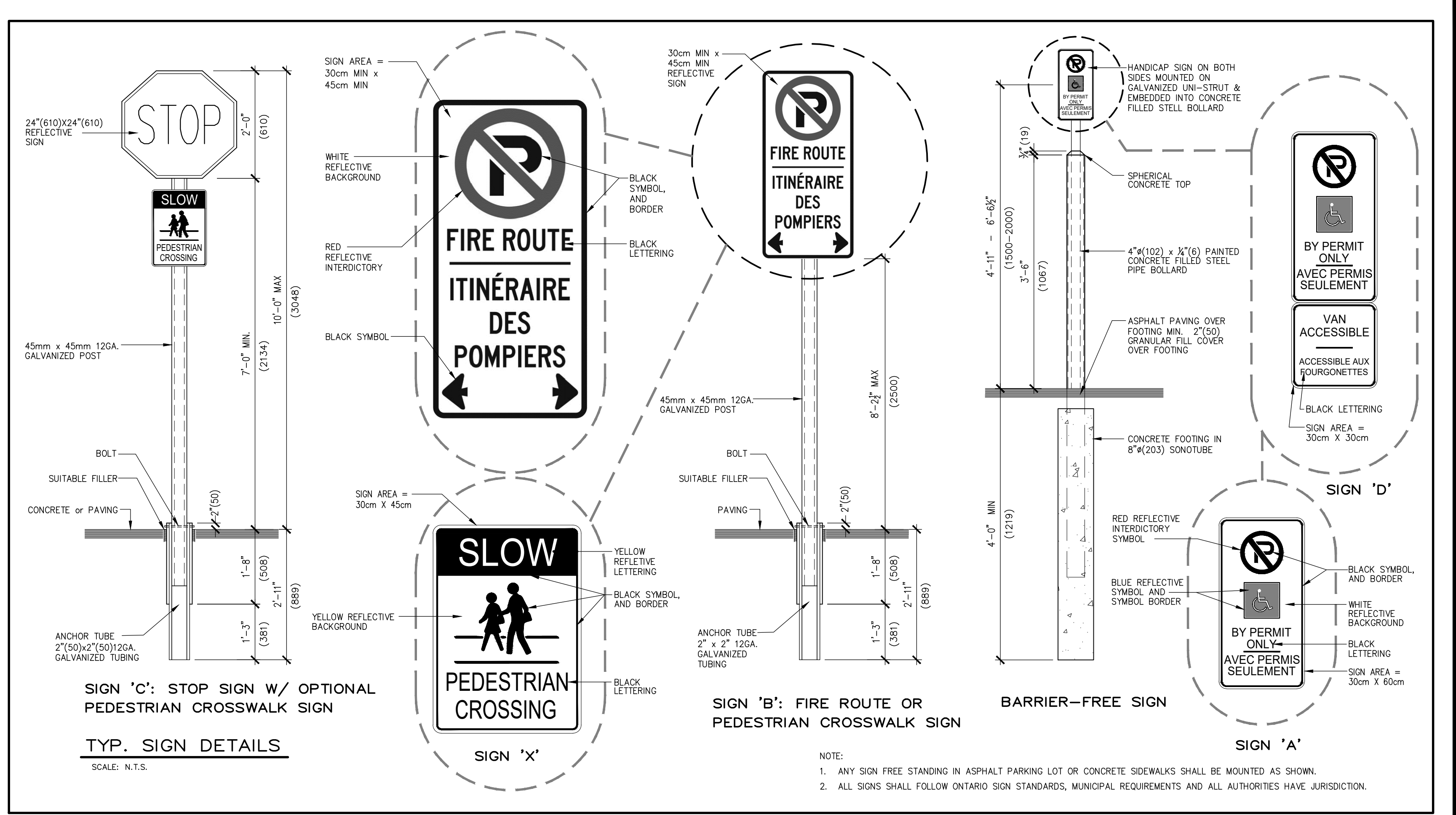


GERALDINE WILDMAN
MANAGER, DEVELOPMENT REVIEW SOUTH
PLANNING, DEVELOPMENT AND BUILDING SERVICES
DEPARTMENT, CITY OF OTTAWA



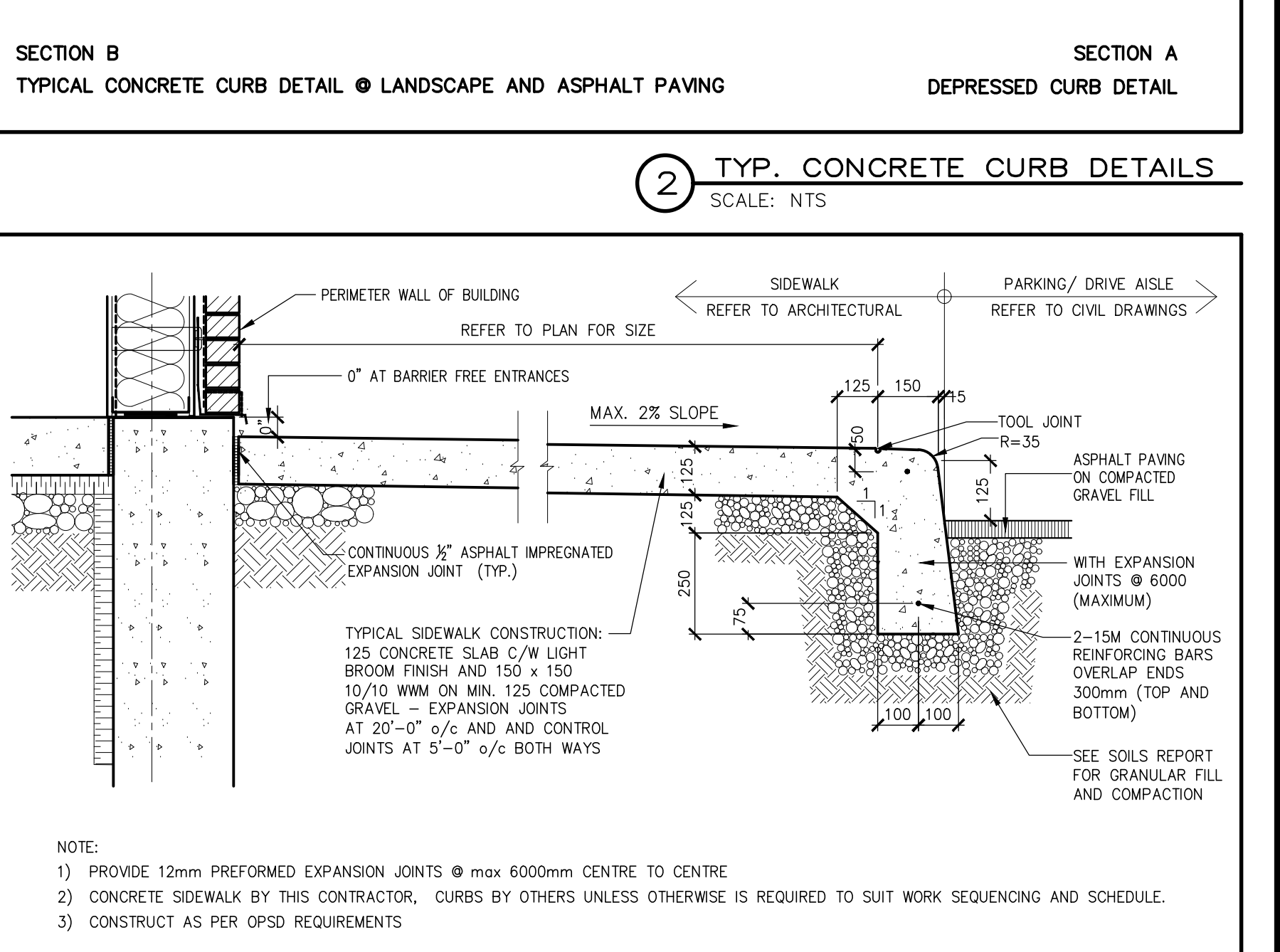
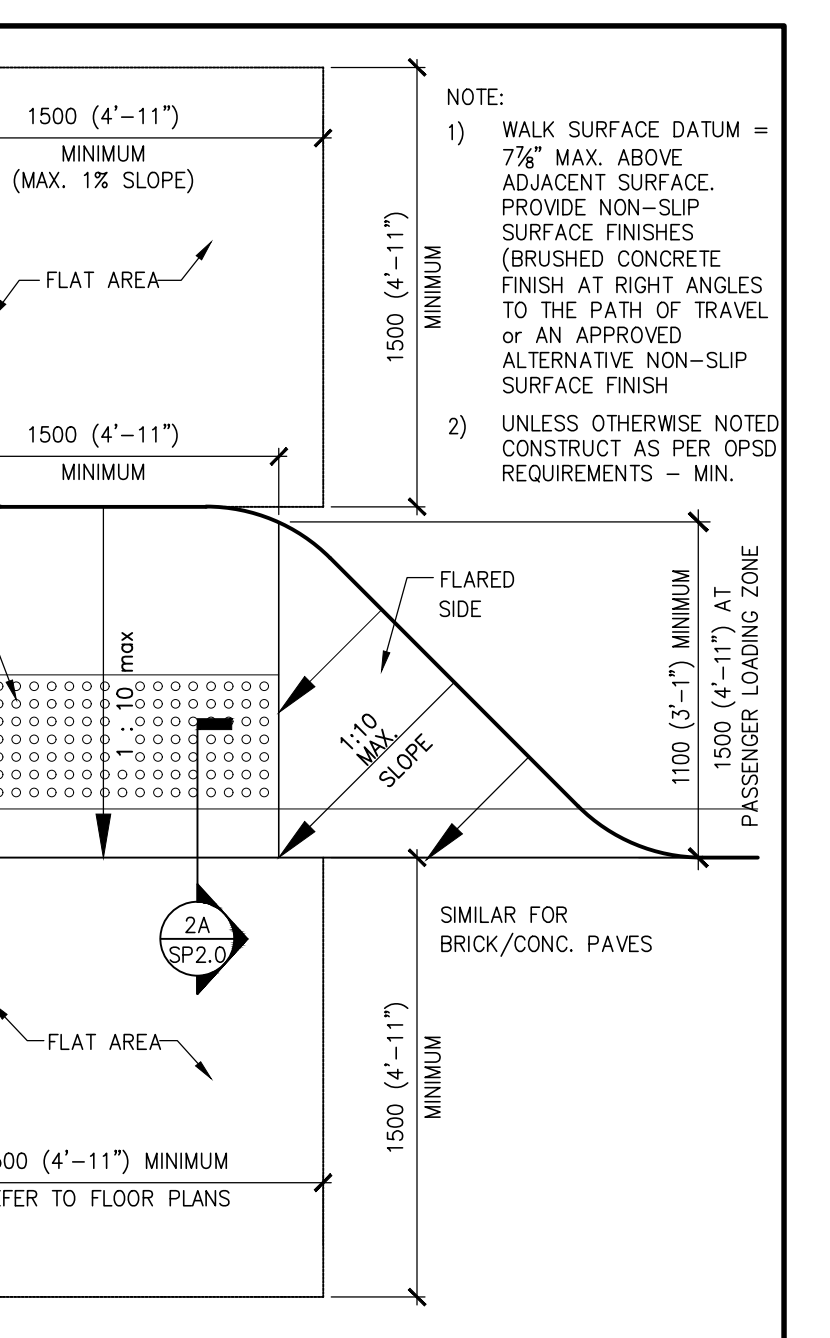
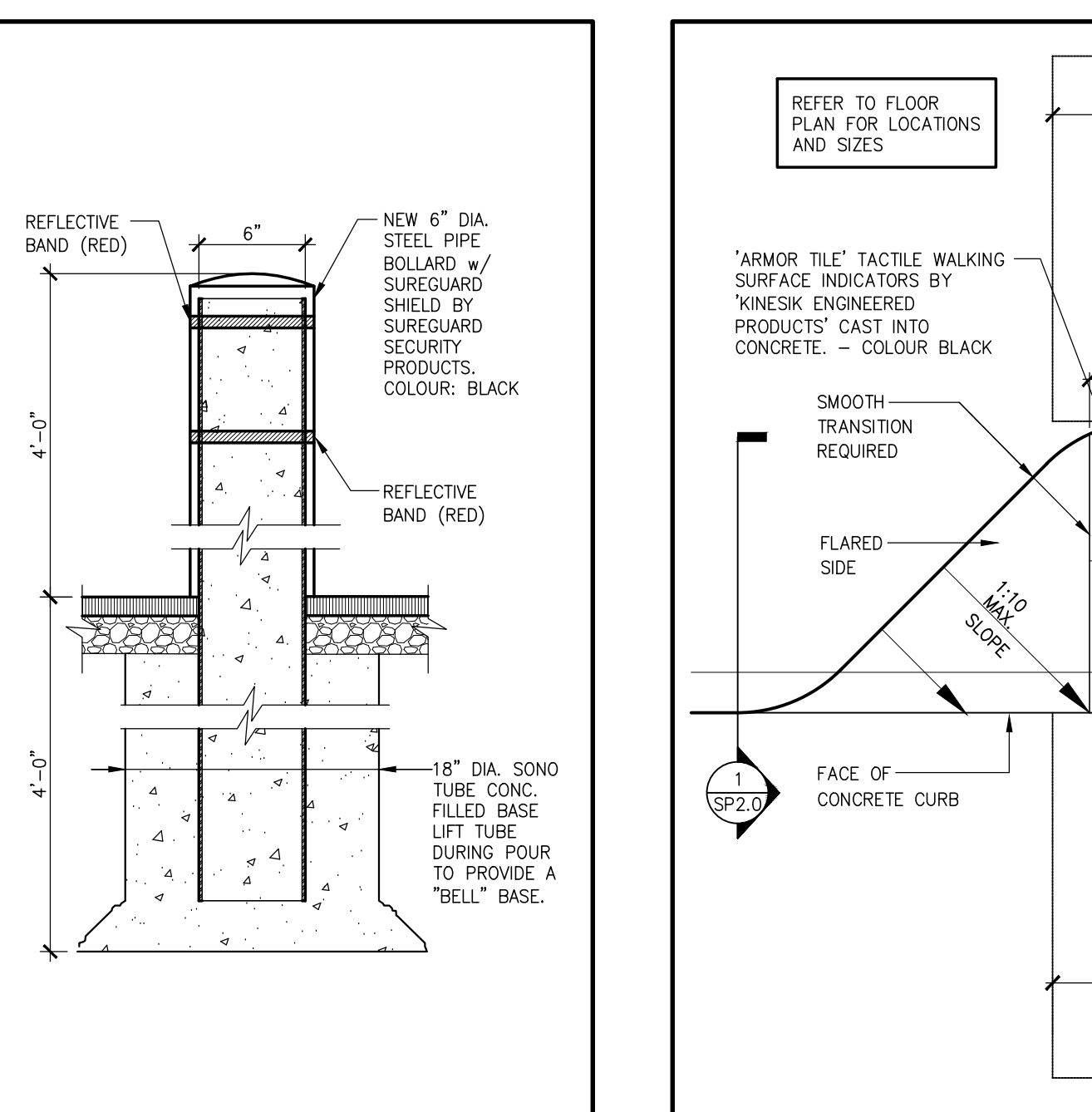
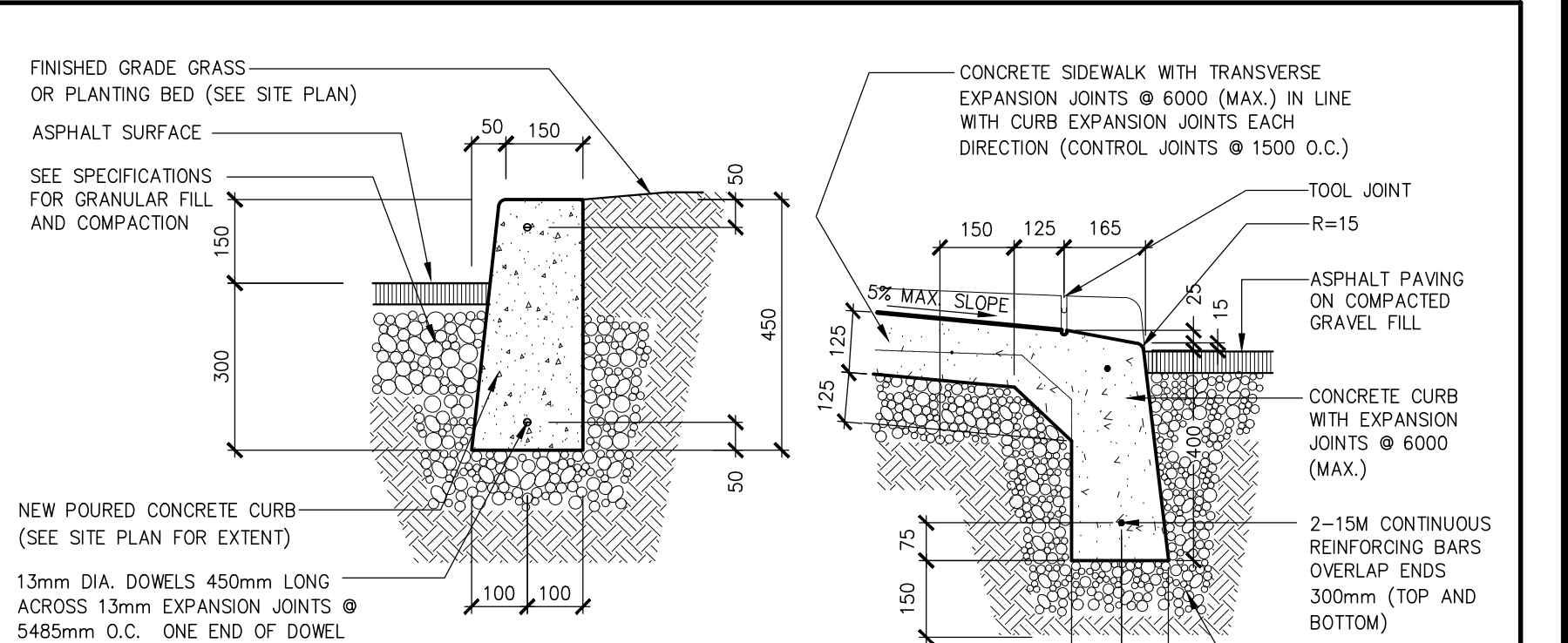
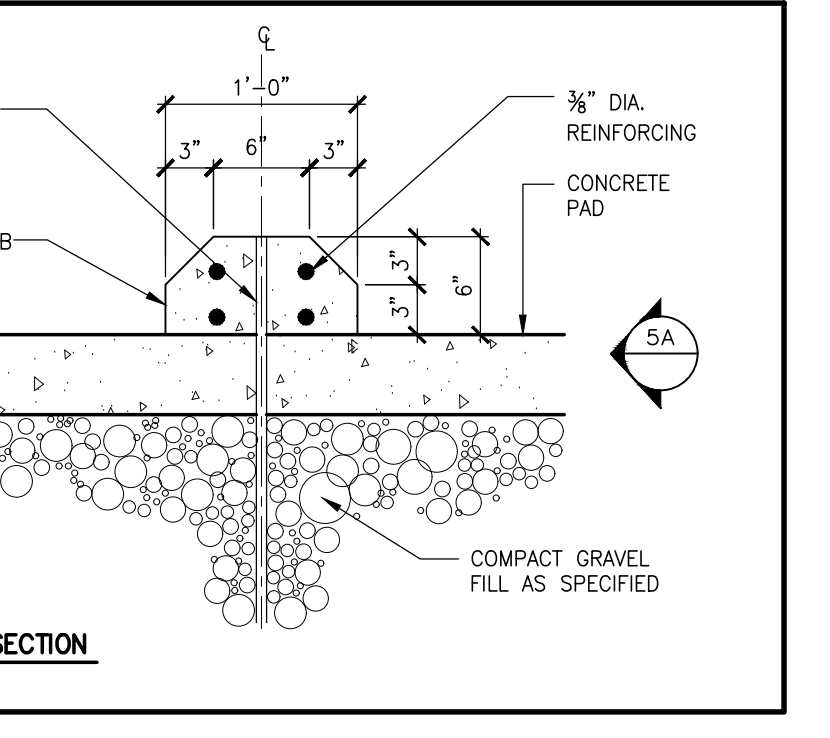
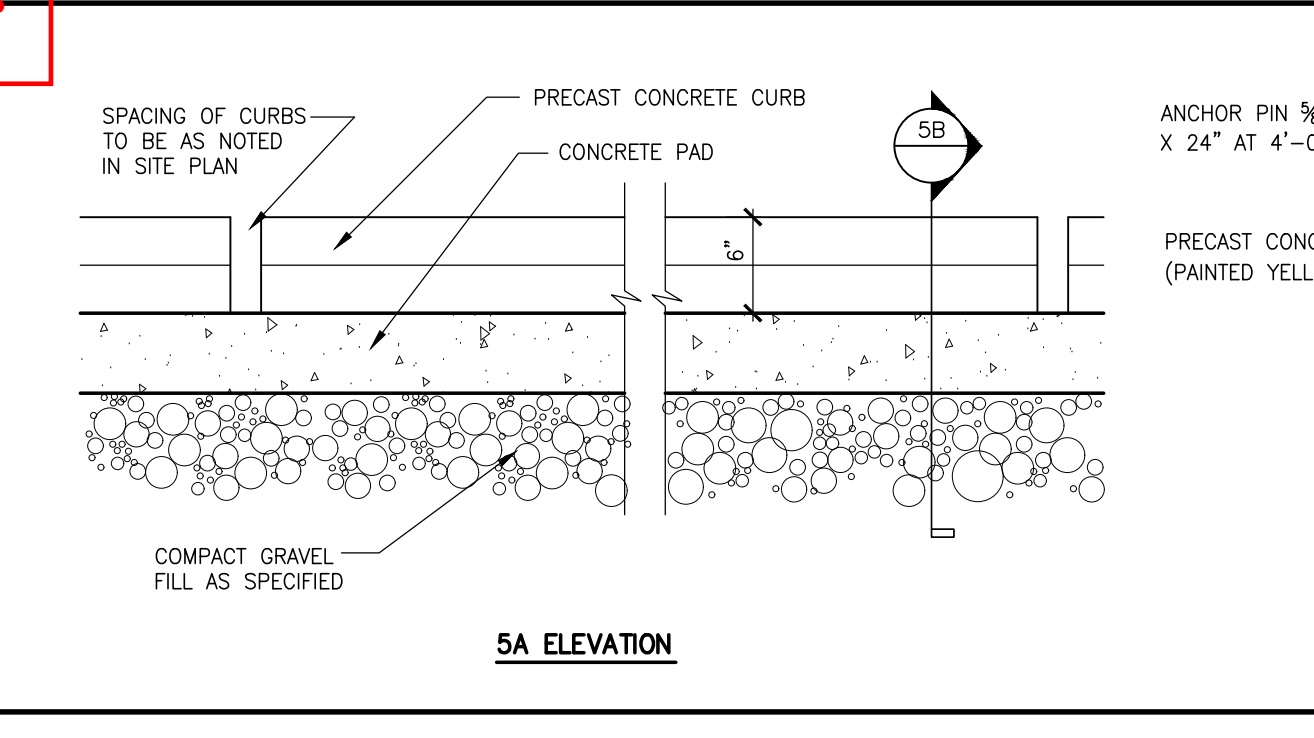
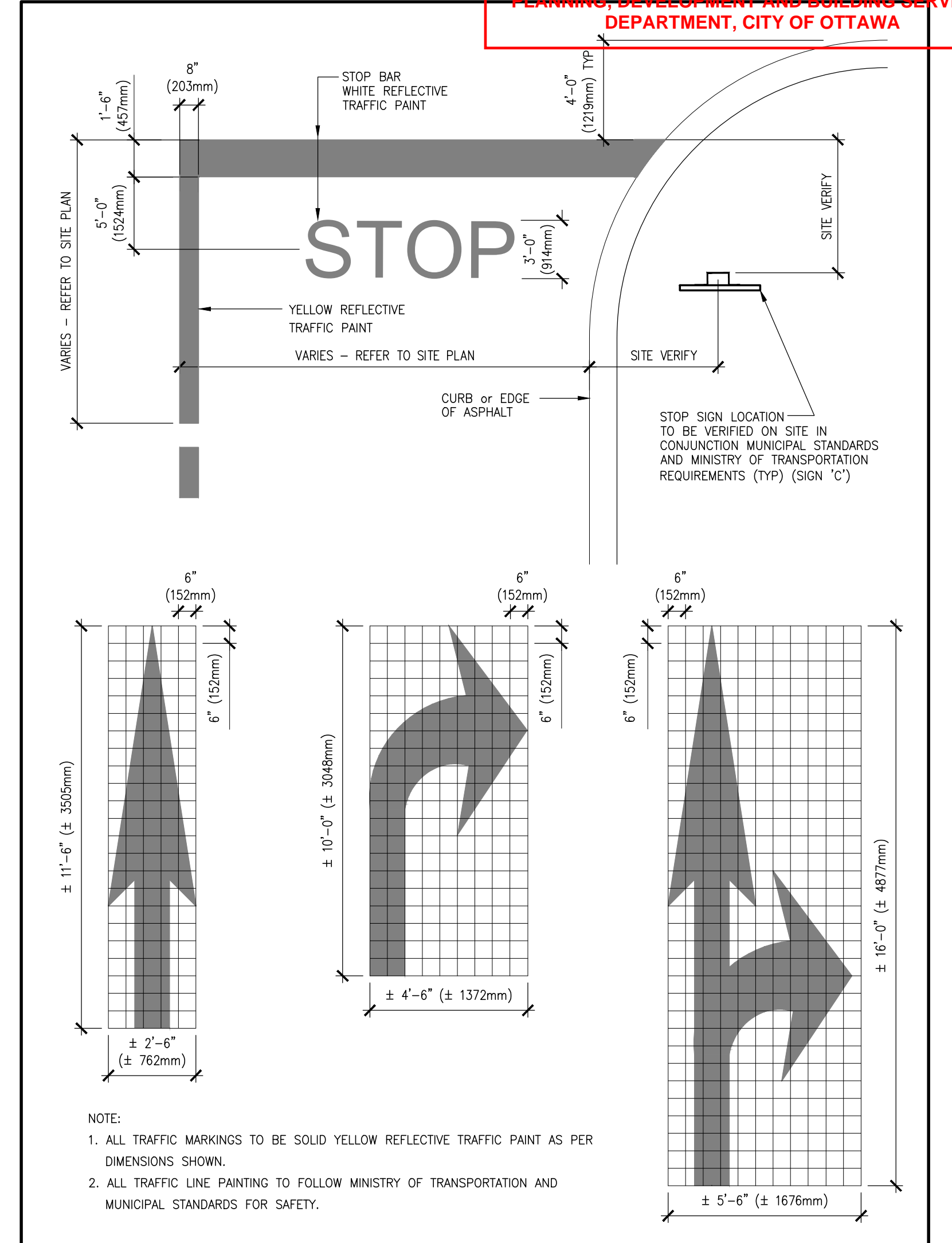
CONCRETE SIDEWALK/ WALKWAY/ ENTRY RAMP GENERAL NOTES

- PROTECT CONCRETE PAD FROM DAMAGE AND VANDALISM UNTIL SET. ANY AREAS DAMAGED BY FOOT PRINTS, TIRES AND/OR WRITING IN CONC. SHALL BE BROKEN UP AND REPLACED AT THE GENERAL CONTRACTOR'S EXPENSE.
- POLURED CONCRETE STRENGTH TO BE 35 Mpa COMPRESSIVE STRENGTH AT 28 DAYS WITH 5% AIR ENTRAINMENT. ENTRAINMENT TO CON-423 CSA-423 1/A23.2. (REFER TO GROUND FLOOR PLAN AND PROPOSED SITE PLAN FOR EXACT LOCATIONS AND LENGTH DIMENSIONS)
- QUALITIES OF THE CEMENT AND AGGREGATES SHALL CONFORM TO C.S.A. SPECIFICATION A-23.1M LATEST REVISION FOR "CONTROLLED CONCRETE".
- PROVIDE A 26mm BITUMINOUS FIBRE EXPANSION JOINT ALONG THE ADJACENT WALL OF THE BUILDING.
- PROVIDE A STIFF BROOM FINISH ON THE SURFACE AND HAND TOOLED EDGES.
- SIDEWALK SLOPES TO BE 2% MAX.
- SAW CUT AT 5'-0" C/C BOTH DIRECTIONS AND EXPANSION JOINTS @ 20'-0" O.C. BOTH DIRECTIONS.
- REINFORCING TO BE AS PER STRUCTURAL DRAWINGS.
- REFER TO LANDSCAPE DRAWINGS FOR STYLE, COLOR AND PATTERN.

FIRE ROUTE SIGN NOTES

FIRE ROUTE TO COMPLY WITH CITY OF OTTAWA BY-LAW

- SIGN PLATE: LETTERING, COLOUR, SIZE AND MATERIAL IN ACCORDANCE WITH CITY OF OTTAWA REQUIREMENTS
- SIGN POST: TYPE AND MATERIAL IN ACCORDANCE WITH 3/SP2.0
- SIGN-MOUNTING ALTERNATIVES: a) STANDARD SIGN POST (SEE 3/SP2.0). b) LIGHT STANDARD OR OTHER EQUIVALENT UTILITY POLE LOCATED NOT MORE THAN 4 METERS FROM THE LIMIT OF THE FIRE ROUTE. c) FENCES, LANDSCAPE WALL AND BUILDING FACES LOCATED NOT MORE THAN 4 METERS FROM THE LIMIT OF THE FIRE ROUTE.
- MOUNTING HEIGHT: 3 METERS MEASURED FROM THE TOP LIMIT OF THE SIGN TO THE GRADE OF THE FIRE ROUTE SURFACE ADJACENT TO THE FIRE ROUTE SIGN.
- SPACING BETWEEN SIGNS: NOT MORE THAN 25 METERS (82 FT) BETWEEN SIGNS LOCATED ON THE SAME SIDE OF THE FIRE ROUTE AND SPACED SUCH THAT AT LEAST 1 SIGN IS CLEARLY VISIBLE AND LETTERING IS LEGIBLE FROM ALL LOCATIONS WITHIN THE FIRE ROUTE.
- LOCATION OF SIGNS: a) FIRE ROUTES GREATER THAN 6.1 METERS IN WIDTH - ONE SIDE OF THE FIRE ROUTE. b) FIRE ROUTE 6.1 METERS OR LESS IN WIDTH - BOTH SIDES OF THE FIRE ROUTE.
- SETBACK FROM THE FIRE ROUTE: a) WHERE A CURB OR EQUIVALENT EDGE TREATMENT IS NOT PROVIDED TO DEFINE THE EDGE OF THE FIRE ROUTE - MINIMUM 3.0 METERS (10 FT) AND MAXIMUM 4.0 METERS (13 FT) TO ANY PART OF THE SIGN. b) WHERE A CURB OR EQUIVALENT EDGE TREATMENT IS PROVIDED TO DEFINE THE EDGE OF THE FIRE ROUTE - MINIMUM 0.3 METERS (1 FT) AND MAXIMUM 1.0 METERS (3 FT) TO ANY PART OF THE SIGN.
- SIGN ORIENTATION: AT AN ANGLE OF NOT LESS THAN 30 DEGREES AND NOT MORE THAN 45 DEGREES TO A LINE PARALLEL TO THE FLOW OF TRAFFIC.
- VISIBILITY: THE PROPERTY OWNER IS RESPONSIBLE TO ENSURE THAT PHYSICAL OBSTRUCTIONS ARE NOT PLACED OR CONSTRUCTED IN LOCATIONS THAT INTERFERE WITH THE VISIBILITY AND /OR LEGIBILITY OF ANY FIRE ROUTE SIGN AND TO ENSURE SUFFICIENT MAINTENANCE OF VEGETATION SUCH THAT UNOBSTRUCTED VIEWS TO ALL FIRE ROUTE.



REV	BY	DESCRIPTION	DATE
AZ	REVISED PER CITY COMMENTS 3		MAR 12 2026
AZ	ISSUED FOR PERMIT		FEB 19 2026
AZ	ISSUED FOR TENDER		FEB 13 2026
AZ	ISSUED FOR TENANTS REVIEW 95%		FEB 04 2026
AZ	ISSUED FOR SITE PLAN APPLICATION		MAR 21 2025

RIO CAN
REAL ESTATE INVESTMENT TRUST
RIOCAN YONGE EGLINTON CENTRE, 500-2300 YONGE STREET
P.O. Box 2396, TORONTO, ON M4P 1E4

ANTHONY ZAGARIA
ARCHITECT
365A - 700 LAWRENCE AVENUE WEST
TORONTO, ONTARIO M5A 3B4
V:(416)793-0878 E:STAFF@LLARCH.CA
WWW.LLARCH.CA

PROPOSED REDEVELOPMENT OF WESTGATE SC
1309 CARLING AVENUE OTTAWA, ONTARIO
DRAWING TITLE
TYPICAL DETAILS
DRAWN BY: COMM. NO. 24-73
CHECKED: AZ
SCALE: AS NOTED
DATE: FEB 12 2025

SP2.0
FILE NUMBER: 007-12-25-004