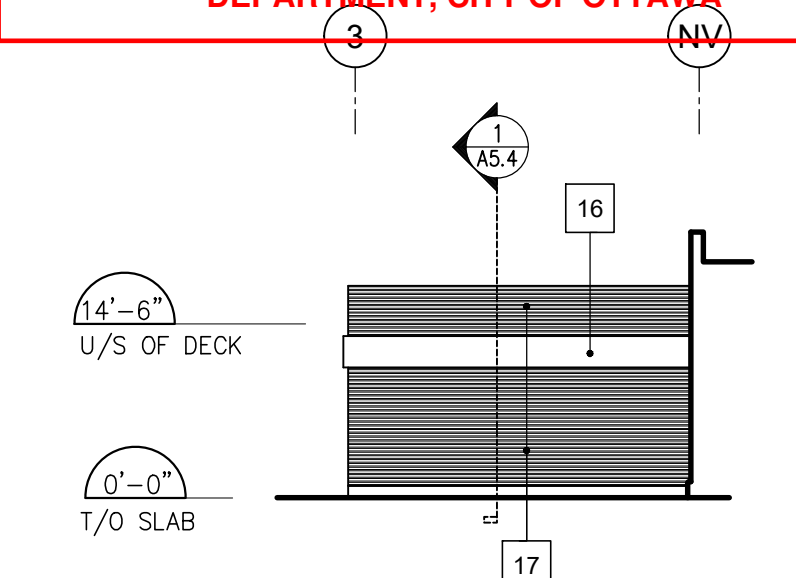


8 PARTIAL WEST ELEVATION
SCALE: 3/32"=1'-0"

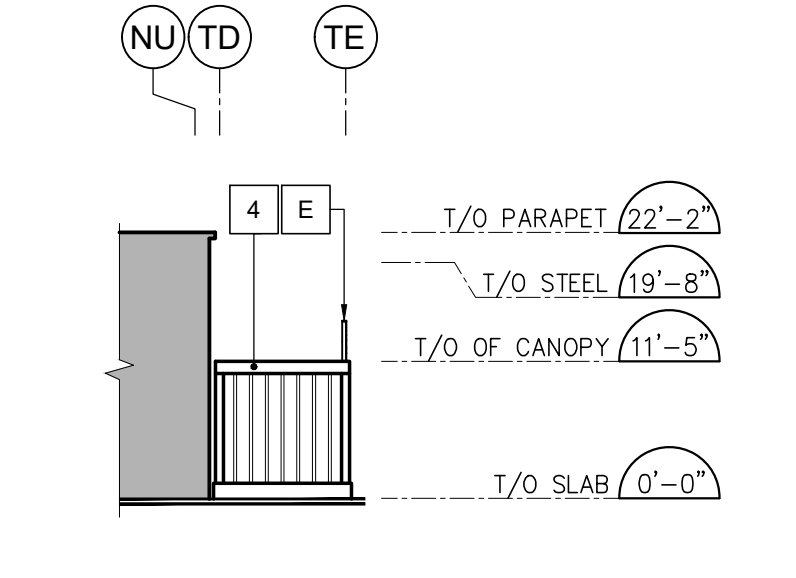
APPROVED
By wildmange at 3:33 pm, Jun 19, 2026

G. Wildman

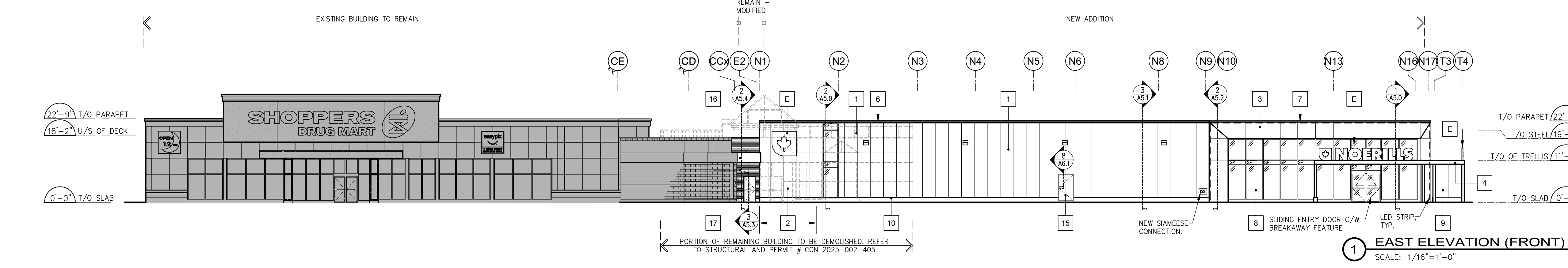
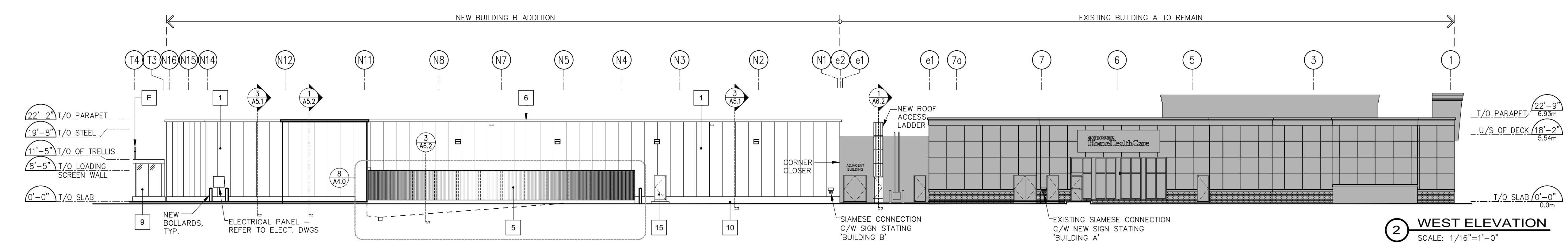
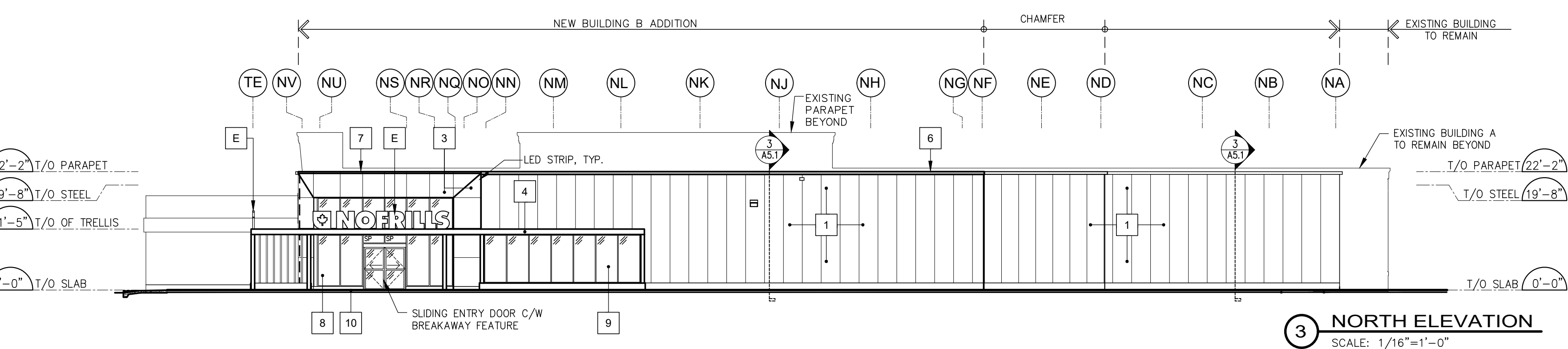
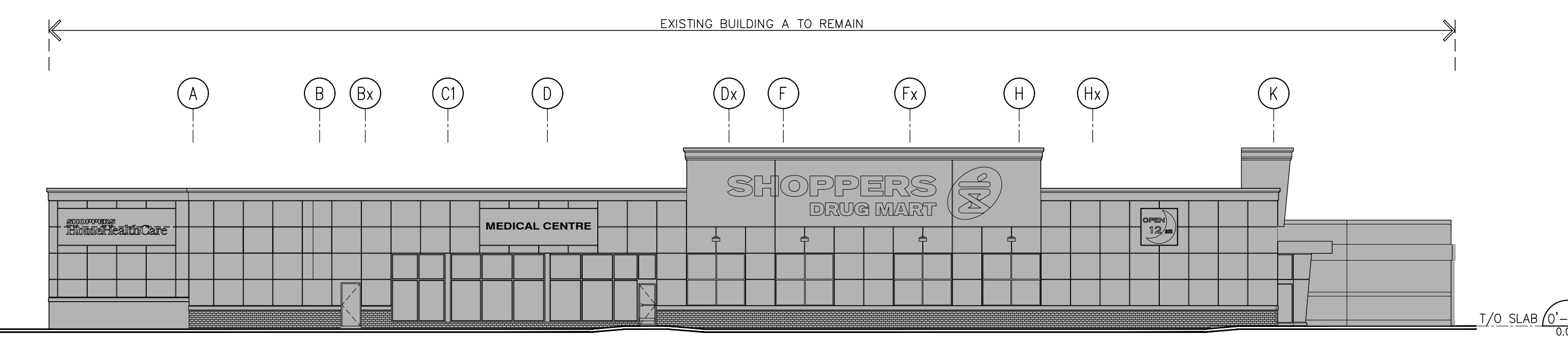
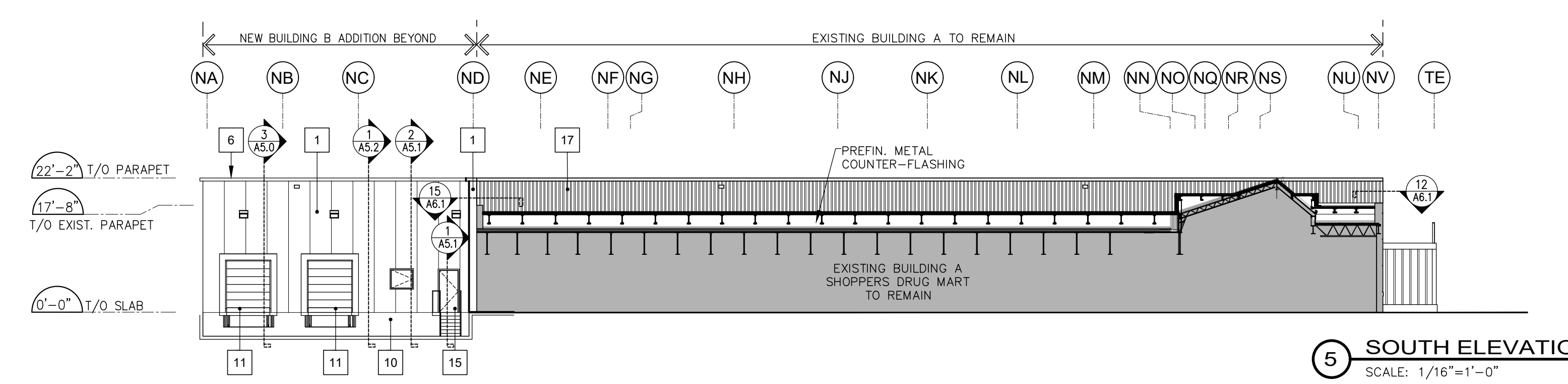
GERALDINE WILDMAN
MANAGER, DEVELOPMENT REVIEW SOUTH
PLANNING, DEVELOPMENT AND BUILDING SERVICES
DEPARTMENT, CITY OF OTTAWA



7 PARTIAL NORTH ELEVATION
SCALE: 1/16"=1'-0"



6 PARTIAL SOUTH ELEVATION
SCALE: 1/16"=1'-0"



- ELEVATION NOTES:**
- PROVIDE PLYWOOD BACKING AT SIGN LOCATIONS AS PER DETAIL ---, EXTENT OF PLYWOOD TO BE COORDINATED TO SUIT TENANT'S SIGNAGE REQUIREMENTS, TYPICAL.
 - FOR STRUCTURAL STEEL SUPPORT SEE STRUCTURAL DRAWINGS.
 - THE EIFS ASSEMBLY INCLUDING THE AIR BARRIER (MARKED ALSO AS 'STUCCO FINISH') IS DESIGNED AS DUAL BARRIER DRAINING SYSTEM WITH MIN 10mm AIR SPACE. IT IS THE RESPONSIBILITY OF THE GENERAL CONTRACTOR TO ENSURE THAT DRYVET SYSTEMS CANADA CARRIES OUT PERIODIC ON-SITE INSPECTIONS TO ENSURE THAT SYSTEM INSTALLATION COMPLIES AND MEETS THE DESIGN CRITERIA, DRYVET STANDARDS AND THE PERFORMANCE REQUIREMENTS. FINAL CERTIFICATION TO THIS EFFECT TO BE ISSUED BY DRYVET AT COMPLETION OF CONSTRUCTION.
 - GENERAL CONTRACTOR TO ENSURE ALIGNMENT OF MASONRY CONTROL JOINTS WITH EIFS CONTROL JOINTS. ANY MISALIGNMENT WILL BE REJECTED.
 - CONTRACTOR TO GRIND CLEAN ANY ACCESS CONCRETE ON FOUNDATION WALL AND FILL IN VOIDS (WITH AN EPOXY BASE FILLER), DUE TO FORMING, AND PAINT USING "DEMANDIT" BY DRYVET.
 - PROVIDE HORIZONTAL EXPANSION JOINTS AT UNDERSIDE OF ALL BEAMS AND VERTICAL/HORIZONTAL CONTROL JOINTS AT CONNECTION OF DISSIMILAR SHEATHINGS.
 - AT ALL WALL MOUNTED LIGHT FIXTURES PROVIDE ADEQUATE BACKING SUPPORT. G.C. TO COORDINATE GYPSUM BOARD, MASONRY, EIFS AND ELECTRICAL SUB TRADES.
 - ENSURE OF BOTTOM CAVITY TO BE FREE OF MORTAR DROPPINGS AND EIFS BOARD DUST. SHOULD BLOCKAGE OCCUR OR BE OBSERVED ON SITE, WHEN MASONRY ACHIEVES FULL STRENGTH, REMOVE EVERY THIRD BLOCK, CLEAN BOTTOM OF CAVITY AND REINSTATE MASONRY UNITS - TYP.

- LEGEND**
- PREFINISHED INSULATED METAL PANEL, REFER TO WALL TYPE W1 ON 1/A1.2, COLOUR CHARCOAL
 - PREFINISHED INSULATED METAL PANEL BY NORBEC, NOROC - L PROFILE, COLOUR BLACK
 - PREFINISHED ALUMINUM COMPOSITE PANEL, COLOUR TO MATCH - YELLOW - CO M19 Y89 KO
 - PAINTED STEEL STRUCTURE, COLOUR BLACK
 - PAINTED GALVALUM VERTICAL METAL SIDING --- PROFILE BY ---
 - PREFINISHED METAL CAP FLASHING, COLOUR CHARCOAL # --- BY VICWEST
 - PREFINISHED METAL CAP FLASHING, CUSTOM COLOUR TO MATCH - YELLOW - CO M19 Y89 KO, NO SUBSTITUTION
 - STOREFRONT INSULATED GLAZING IN BLACK ANODIZED THERMALLY BROKEN ALUMINUM FRAMES, PROVIDE SOLARBAN 60 ON CLEAR, TEMPERED GLAZING
 - CART STORAGE GLAZING IN BLACK ANODIZED ALUMINUM FRAMES, TEMPERED SAFETY GLAZING
 - EXPOSED CONCRETE FOUNDATION - ARCHITECTURAL FINISH TO BE DYED USING 'PERMATINT' COLOUR 'EARTH BLACK', NO SUBSTITUTIONS
 - OVERHEAD DOOR COLOUR TO MATCH ADJACENT FINISH
 - STEEL PIPE BOLLARD FILLED WITH CONCRETE, SEE DETAIL 6/A2.0
 - ARCHITECTURAL CONCRETE BLOCK TO MATCH EXISTING
 - STUCCO PANELS TO MATCH EXISTING
 - H.M. DOORS & FRAMES TO BE PAINTED AS REQUIRED BY APPLICATION - COLOUR TO ADJUST FINISH
 - METAL FLASHING BAND TO MATCH EXISTING
 - PREFINISHED HORIZONTAL METAL SIDING --- PROFILE BY VICWEST - COLOUR CHARCOAL # ---
 - ILLUMINATED SIGNAGE UNDER SEPARATE PERMIT AND INSTALLED BY OTHERS - N.I.C. POWER UNDER THIS CONTRACT - SEE ELECTRICAL
 - SPANDREL PANEL BLACK ANODIZED IN THERMALLY BROKEN ALUMINUM FRAMES
 - NEW ARCHITECTURAL WALL SCANCE, 'AWL25-LED' BY RAB DESIGN OR APPROVED EQUAL, COLOUR 'BLACK'
 - LIGHT FIXTURE REFER TO ELEC. SPEC. FOR LIGHT FIXTURE
 - DENOTES CLEAR GLAZING IN CLEAR ANODIZED ALUMINUM FRAMES
- NOTE: GRADES ARE SHOWN FOR REFERENCE ONLY. GENERAL CONTRACTOR SHALL REFER TO GRADING PLAN PREPARED BY CIVIL ENGINEER PRIOR TO COMMENCING WORK. NOTIFY CONSULTANTS OF ANY DISCREPANCIES.

REV	DESCRIPTION	DATE
AZ	REVISED PER CITY COMMENTS 3	MAR 12 2026
AZ	ISSUED FOR PERMIT	FEB 19 2026
AZ	ISSUED FOR TENDER	FEB 15 2026
AZ	ISSUED FOR TENANTS REVIEW 95%	FEB 04 2026
AZ	REVISED PER CITY COMMENTS 2	JAN 15 2026
AZ	ISSUED FOR TENANTS REVIEW 50%	NOV 11 2025
AZ	REVISED PER CITY COMMENTS 1	OCT 31 2025

CONTRACTOR SHALL CHECK AND VERIFY ALL DIMENSIONS ON SITE
DO NOT SCALE DRAWINGS

RIO CAN
REAL ESTATE INVESTMENT TRUST
RIOCAN YONGE EGLINTON CENTRE, 2200-2300 YONGE STREET
P.O. Box 2386, TORONTO, ON M4P 1E4

ANTHONY ZAGARIA
ARCHITECT
365A - 700 LAWRENCE AVENUE WEST
TORONTO, ONTARIO M5S 1V4
V: (416) 783-8378 E: STAFF@PULCRUM.CA
WWW.LLARCH.CA

ONTARIO ASSOCIATION OF ARCHITECTS
ANTHONY ZAGARIA
LICENCE 6843

PROJECT: PROPOSED REDEVELOPMENT OF
WESTGATE SC
1309 CARLING AVENUE OTTAWA, ONTARIO

DRAWING TITLE: **ELEVATIONS**

DRAWN BY: LV AP COM. NO. 24-73B
CHECKED BY: AZ DRAWING NO. **A4.0**
SCALE: AS NOTED
DATE: DEC 16 2024