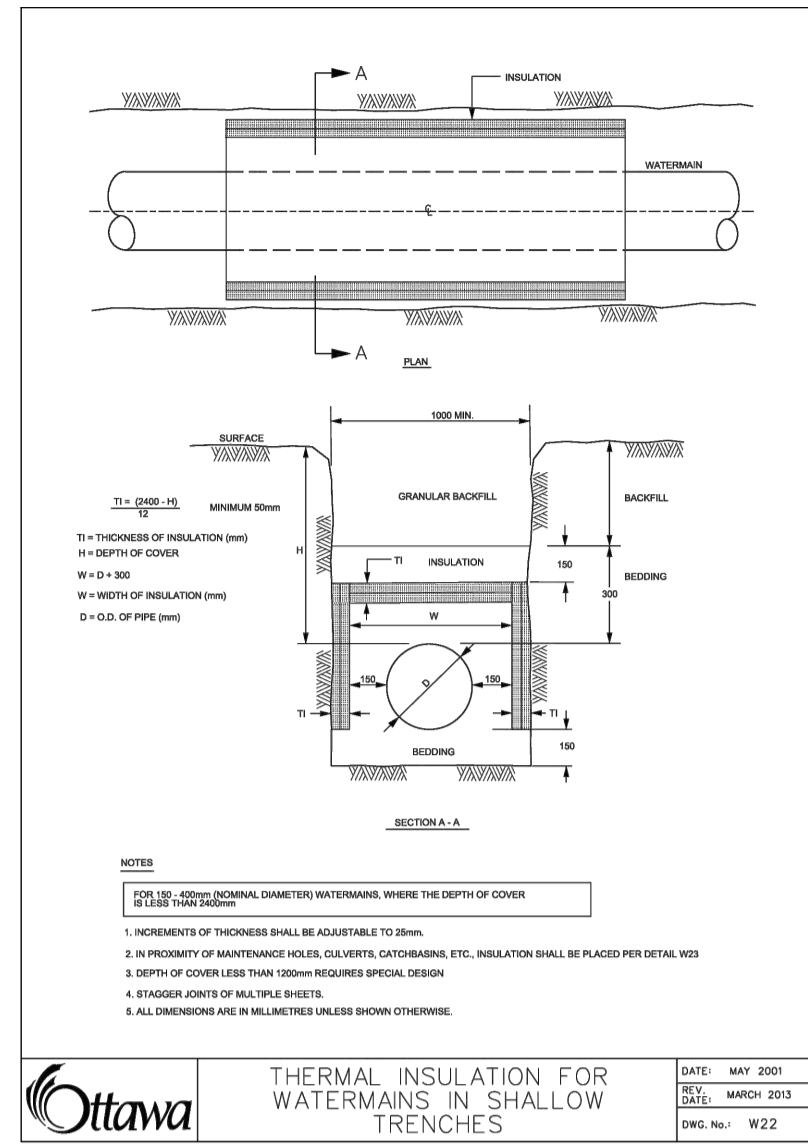
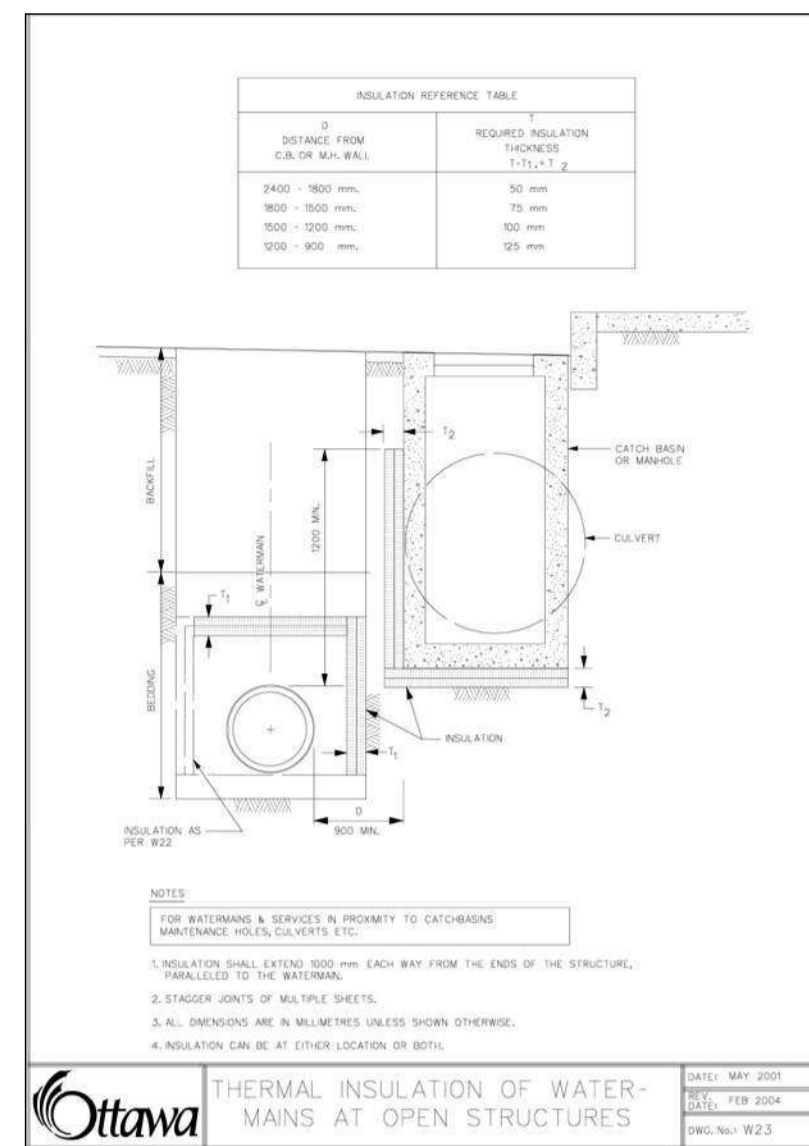


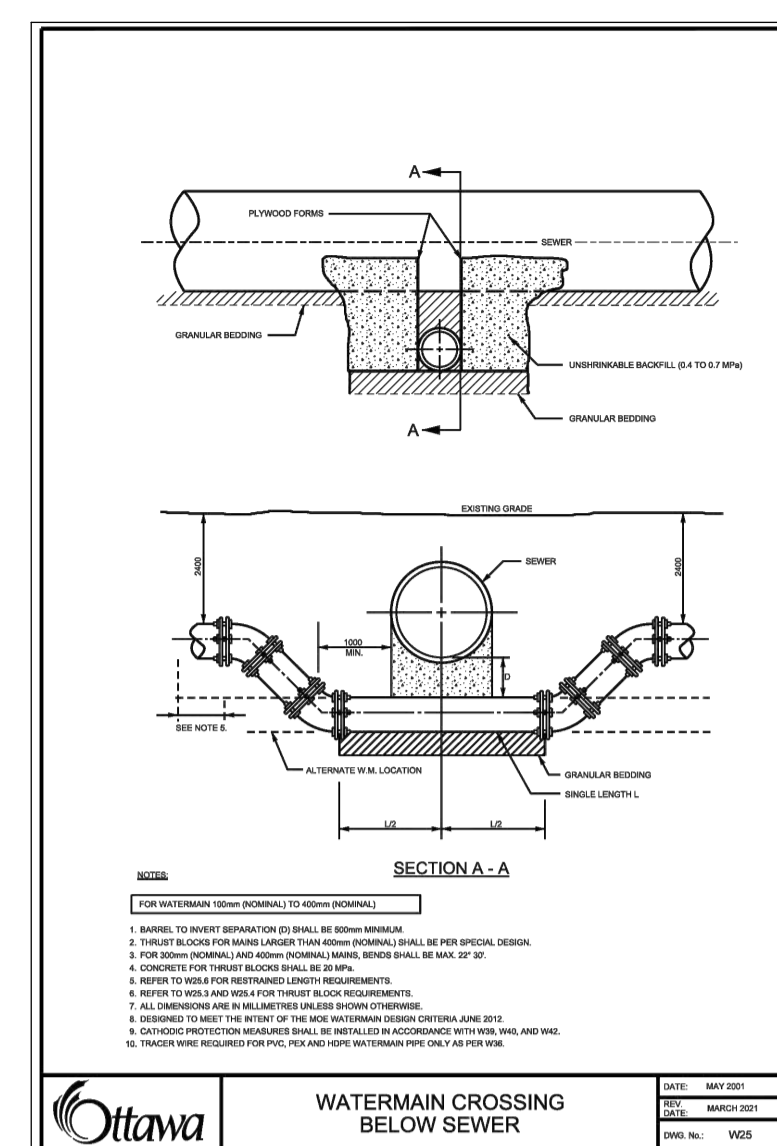
**CIRCULAR CHAMBER GATE VALVES**  
 DATE: MAY 2001  
 REV: MARCH 2002  
 DES. NO.: W22



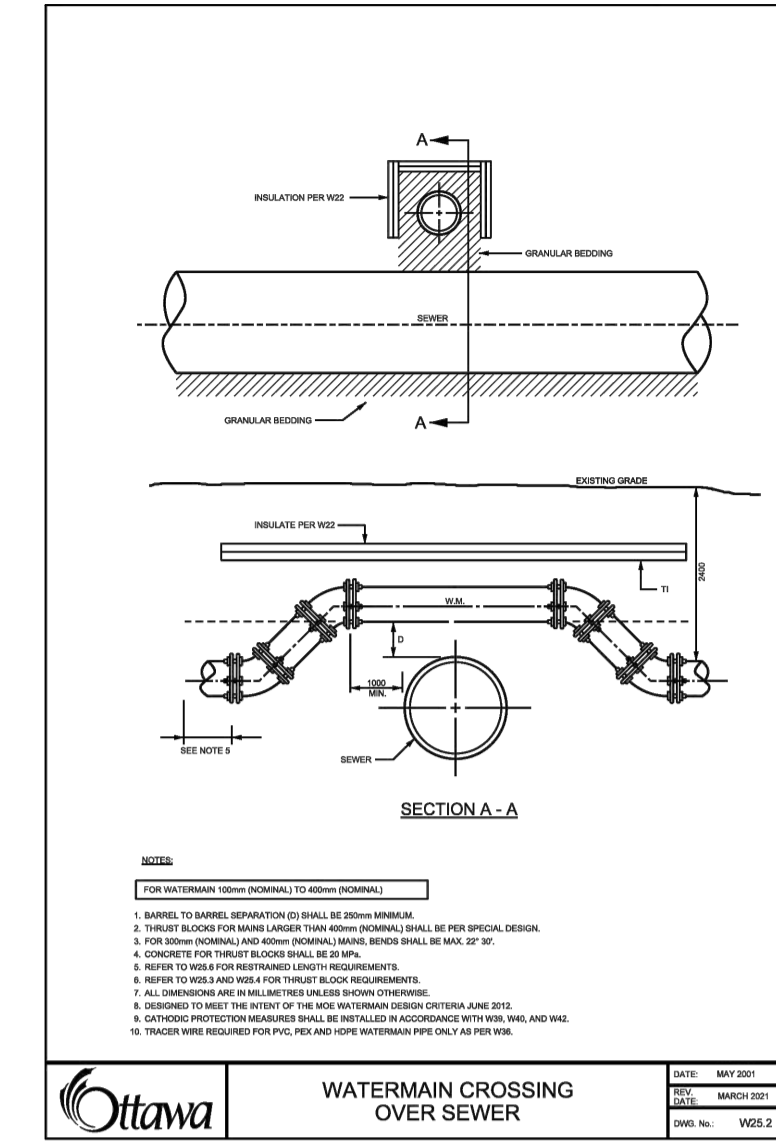
**THERMAL INSULATION FOR WATERMAINS IN SHALLOW TRENCHES**  
 DATE: MAY 2001  
 REV: MARCH 2002  
 DES. NO.: W22



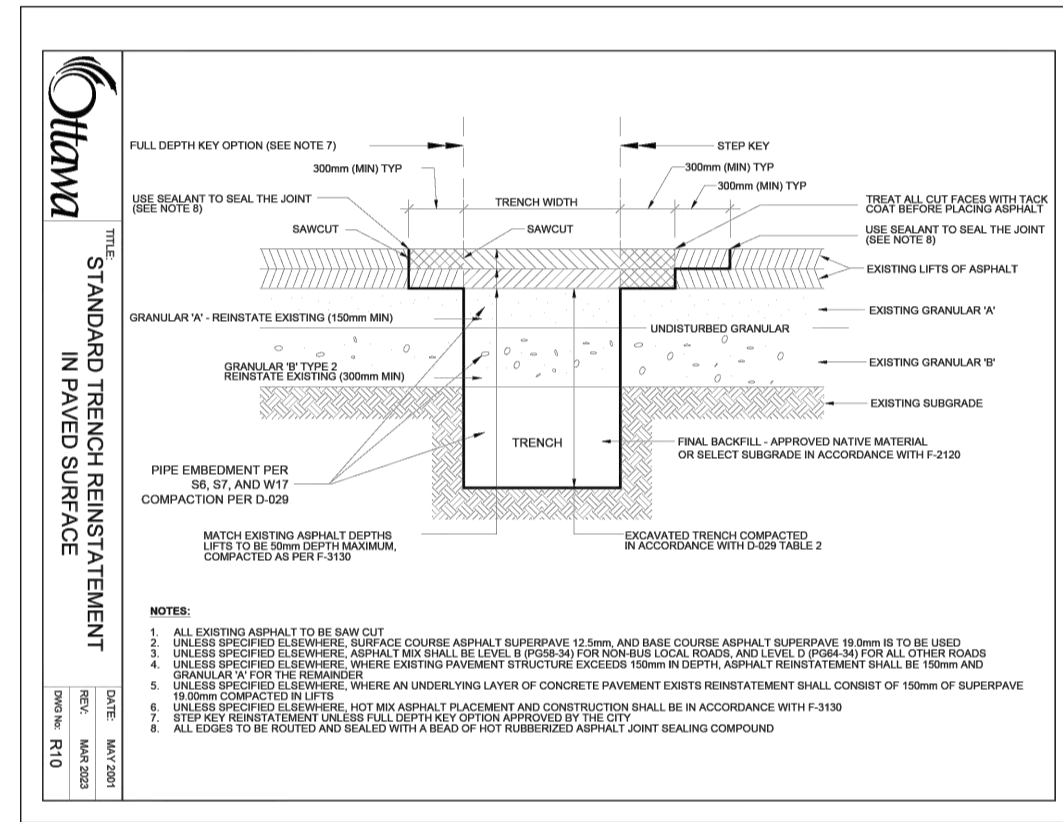
**THERMAL INSULATION OF WATERMAINS AT OPEN STRUCTURES**  
 DATE: MAY 2001  
 REV: MARCH 2002  
 DES. NO.: W22



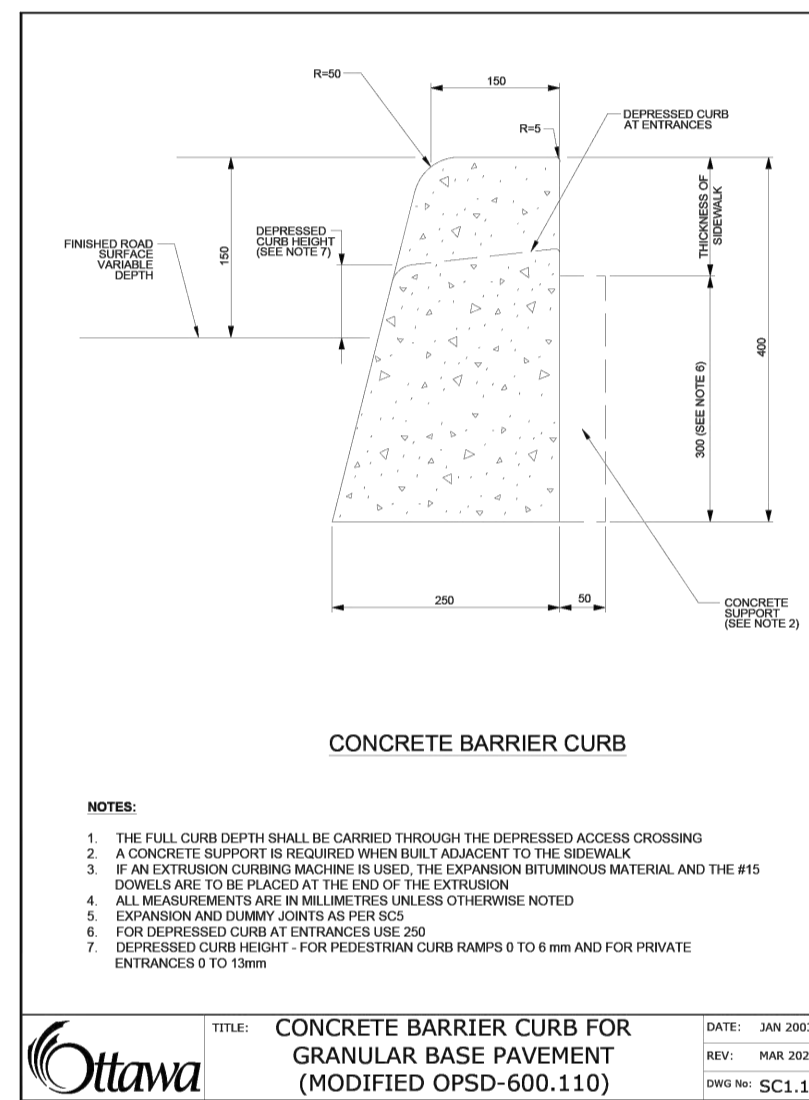
**WATERMAIN CROSSING BELOW SEWER**  
 DATE: MAY 2001  
 REV: MARCH 2002  
 DES. NO.: W22



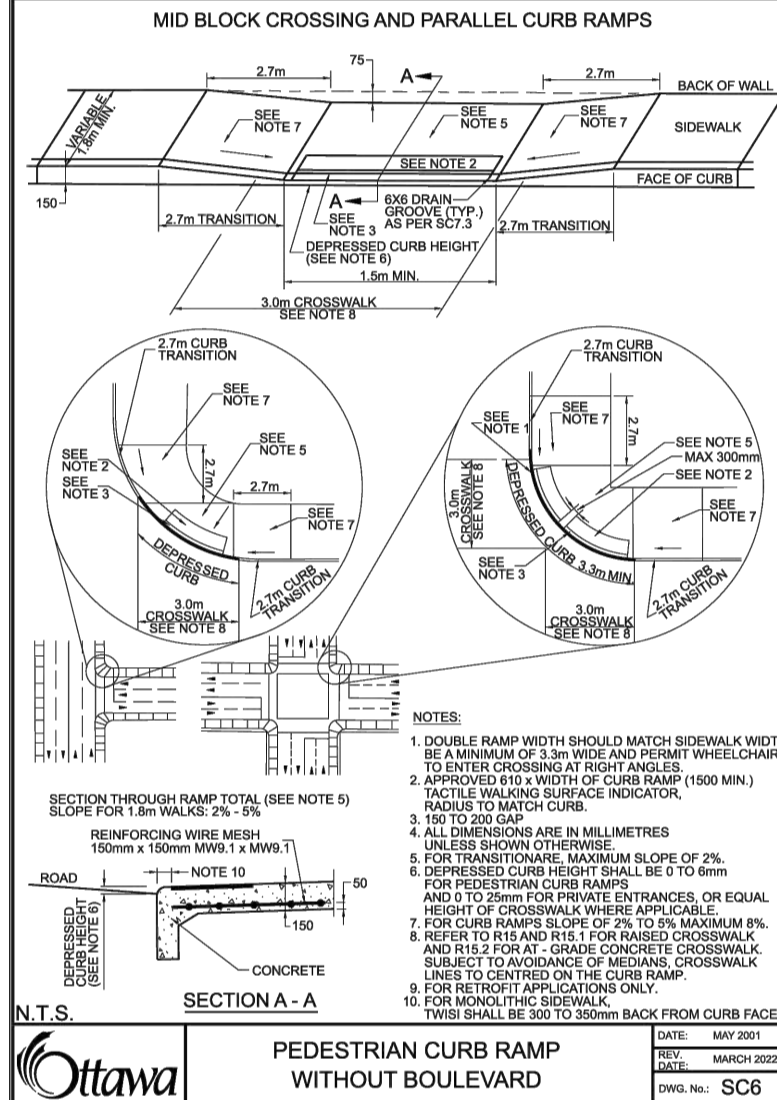
**WATERMAIN CROSSING OVER SEWER**  
 DATE: MAY 2001  
 REV: MARCH 2002  
 DES. NO.: W22



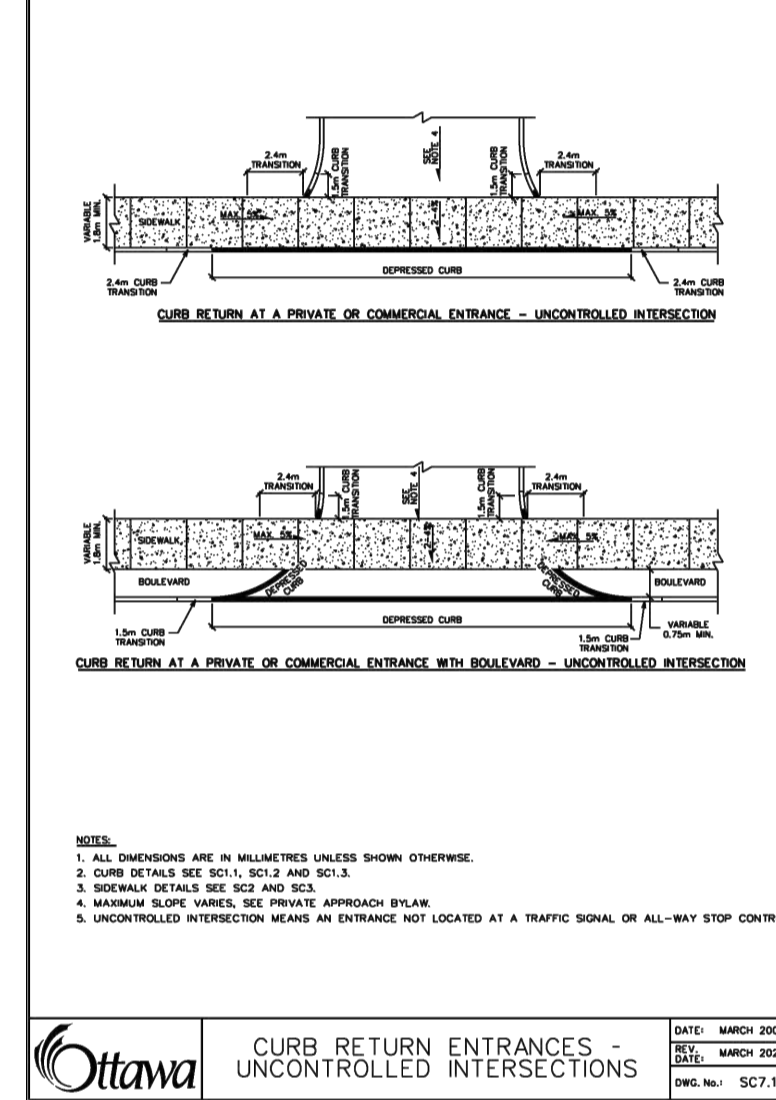
**STANDARD TRENCH REINFORCEMENT IN TRENCHES**  
 DATE: MAY 2001  
 REV: MARCH 2002  
 DES. NO.: W22



**CONCRETE BARRIER CURB FOR GRANULAR BASE PAVEMENT (MODIFIED OPSD-600.110)**  
 DATE: JAN 2003  
 REV: MAR 2005  
 DES. NO.: SC1.1



**PEDESTRIAN CURB RAMP WITHOUT BOULEVARD**  
 DATE: MAY 2001  
 REV: MARCH 2002  
 DES. NO.: SC6



**CURB RETURN ENTRANCES - UNCONTROLLED INTERSECTIONS**  
 DATE: MARCH 2007  
 REV: MARCH 2007  
 DES. NO.: SC7.1

NOTE: THE POSITION OF ALL POLE LINES, CONDUITS, UNDERGROUND AND OVERGROUND UTILITIES AND STRUCTURES IS NOT NECESSARILY SHOWN ON THE CONTRACT DRAWINGS, AND WHERE SHOWN, THE ACCURACY OF THE POSITION OF SUCH UTILITIES AND STRUCTURES IS NOT GUARANTEED. BEFORE STARTING WORK, DETERMINE THE EXACT LOCATION OF ALL SUCH UTILITIES AND STRUCTURES AND ASSUME ALL LIABILITY FOR DAMAGE TO THEM.

| No. | REVISION                                 | DATE        | BY  |
|-----|--|-------------|-----|
| 7.  | REVISED PER LANDSCAPE PLAN               | DEC 03/25   | ARM |
| 6.  | REVISED PER CITY COMMENTS                | NOV 18/25   | ARM |
| 5.  | REVISED PER RETAINING WALL ALTERATIONS   | OCT 07/25   | GJM |
| 4.  | ADDITION OF GEOTECHNICAL RECOMMENDATIONS | AUG 19/25   | GJM |
| 3.  | REVISED PER CITY COMMENTS                | AUG 12/25   | GJM |
| 2.  | REVISED PER COMPLETENESS REVIEW COMMENTS | MAY 09/25   | GJM |
| 1.  | ISSUED FOR SITE PLAN APPLICATION         | MARCH 21/25 | GJM |

| SCALE    | DESIGN     |
|----------|------------|
| AS SHOWN | ARM/AM     |
|          | CHECKED    |
|          | ARM        |
|          | DRAWN      |
|          | ARM/CJF/AM |
|          | CHECKED    |
|          | ARM        |
|          | APPROVED   |
|          | GJM        |

PROFESSIONAL ENGINEER  
**A.R. MESTWARP**  
 100201604  
 DEC 03/2025  
 PROVINCE OF ONTARIO

**NOVATECH**  
 Engineers, Planners & Landscape Architects  
 Suite 200, 240 Michael Cowpland Drive  
 Ottawa, Ontario, Canada K2M 1P6  
 Telephone: (613) 254-9643  
 Facsimile: (613) 254-5867  
 Website: www.novatech-eng.com

LOCATION  
 1101 SPOOR STREET, CITY OF OTTAWA  
 COPPERWOOD FLATS - BLOCK 125

DRAWING NAME  
**NOTES AND DETAILS**

|             |            |
|-------------|------------|
| PROJECT No. | 122144     |
| REV         | REV#7      |
| DRAWING No. | 122144-ND2 |

*SM*

**SEAN MOORE MCIP, RPP**  
 MANAGER, DEVELOPMENT REVIEW - WEST  
 PLANNING, INFRASTRUCTURE & ECONOMIC  
 DEVELOPMENT DEPARTMENT, CITY OF OTTAWA

**APPROVED**  
 By Sean Moore at 8:26 pm, Jan 21, 2026

M:\2025\122144\BLOCK\_307\CAD\CIVIL\22144-BLK125-ND.dwg, ND2, Nov 24, 2025 - 1:51 pm, amestwarp