



40 YEAR CANOPY CALCULATION:

-1,520 m2 site area

-5 medium trees (79m2 ea.) and 8 columnar trees proposed (7m2 ea.) =451m2 canopy cover =29.7% canopy cover

Small and columnar trees calculated at 3m spread.

LEGAL DESCRIPTION:

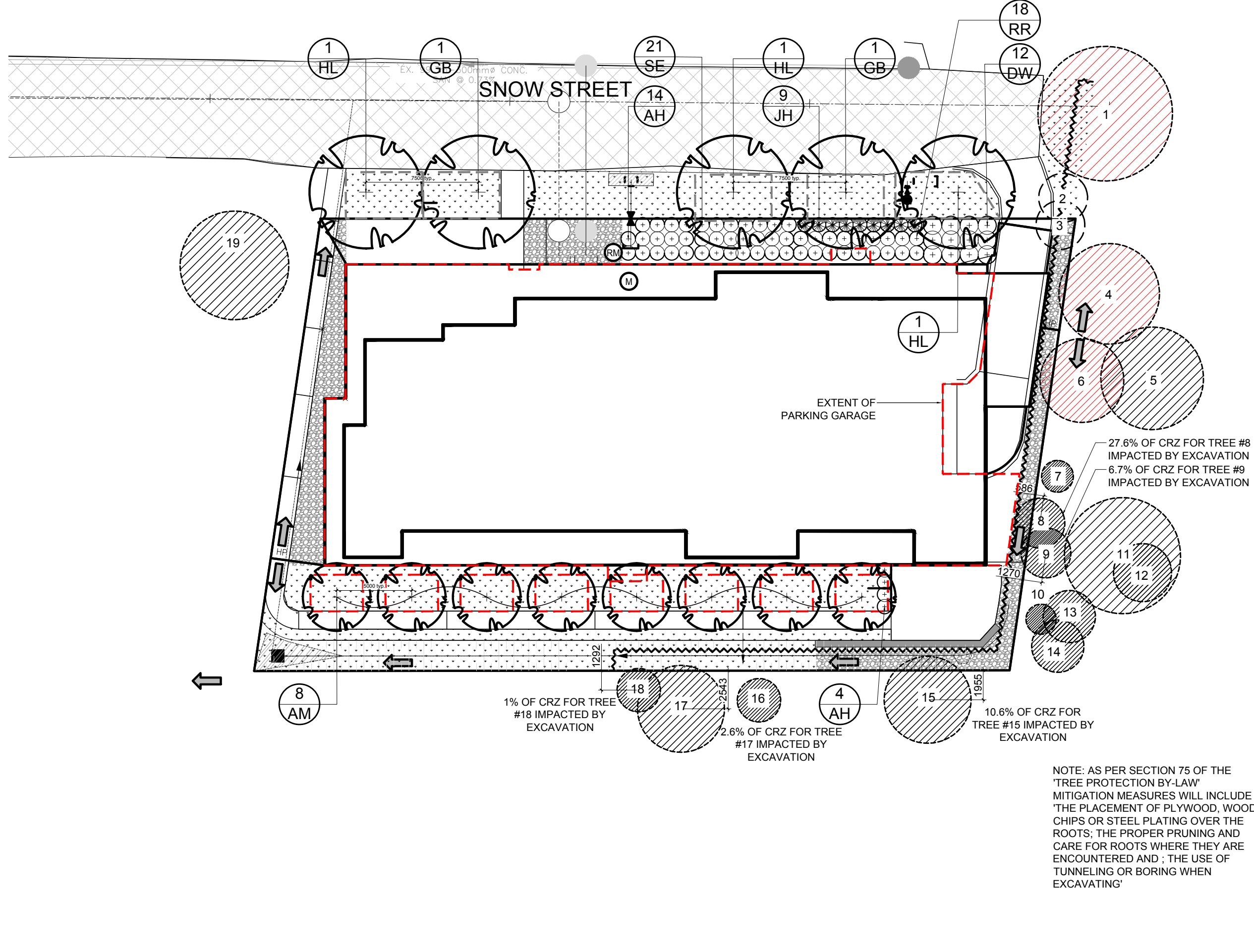
LOTS 50, 51, 52, 53 & 54 OF REGISTERED PLAN 323

KEY PLAN N.T.S.

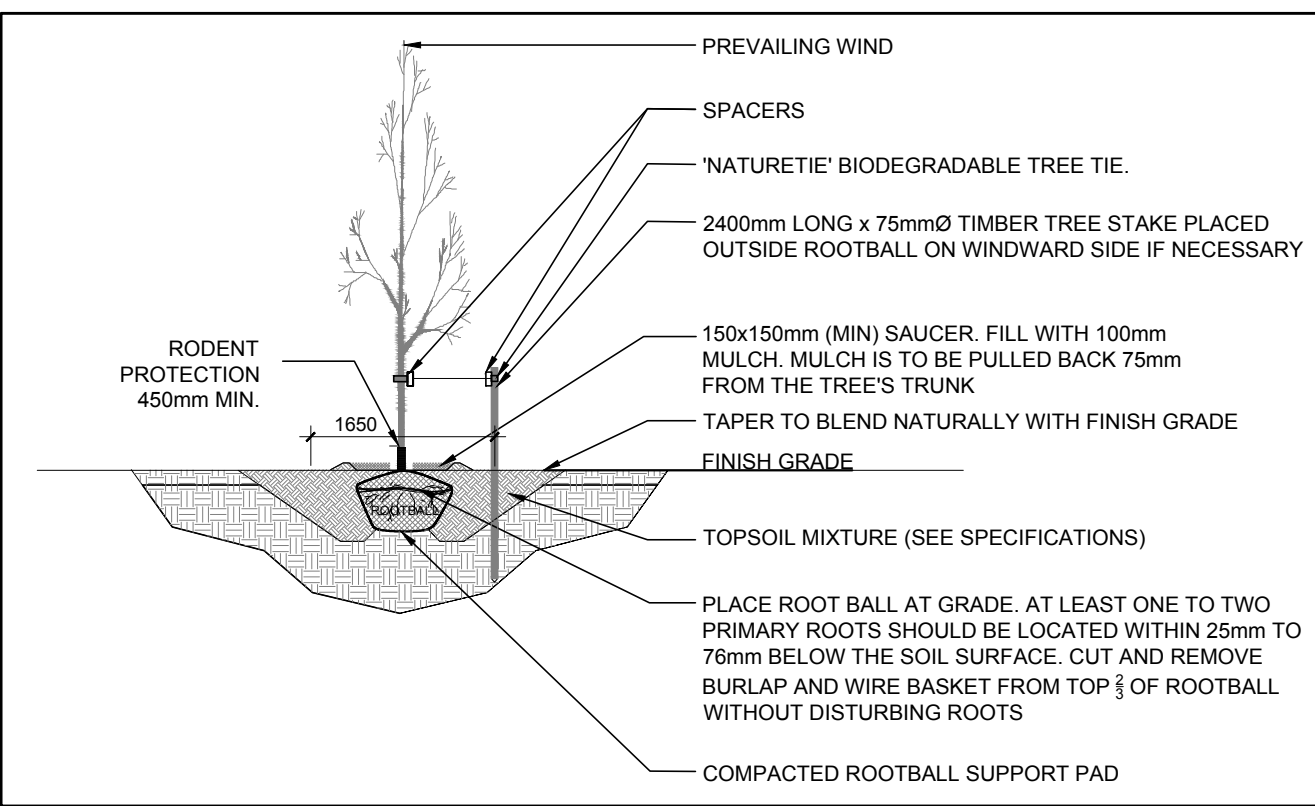
PROPOSED PLANT LIST

KEY	QTY.	BOTANICAL NAME	COMMON NAME	SIZE	CONDITION	REMARKS
TREES						
* AM	8	Acer x freemanii 'Armstrong'	Armstrong Maple	50mm cal.	B&B	Proposed on private property
GB	3	Ginkgo biloba 'Princeton Sentry'	Princeton Sentry Ginkgo	50mm cal.	B&B	Proposed on city property
* HL	3	Gleditsia triacanthos 'Draves'	Street Keeper Honey Locust	50mm cal.	B&B	Proposed on city property
SHRUBS						
AH	18	Hydrangea arborescens 'Annabelle'	Annabelle Hydrangea	1 gallon pot	Potted	Space 1000mm o.c.
* DW	12	Cornus sericea	Red Osier Dogwood	800mm ht.	Potted	Space 1200mm o.c.
* JH	9	Juniperus horizontalis	Creeping Juniper	600mm spr.	Potted	Space 800mm o.c.
RR	18	Rosa rugosa	Rugosa Rose	800mm ht.	Potted	Space 1000mm o.c.
SE	21	Sorbaria sorbifolia 'Sem'	Sem False Spirea	600mm ht.	Potted	Space 1000mm o.c.

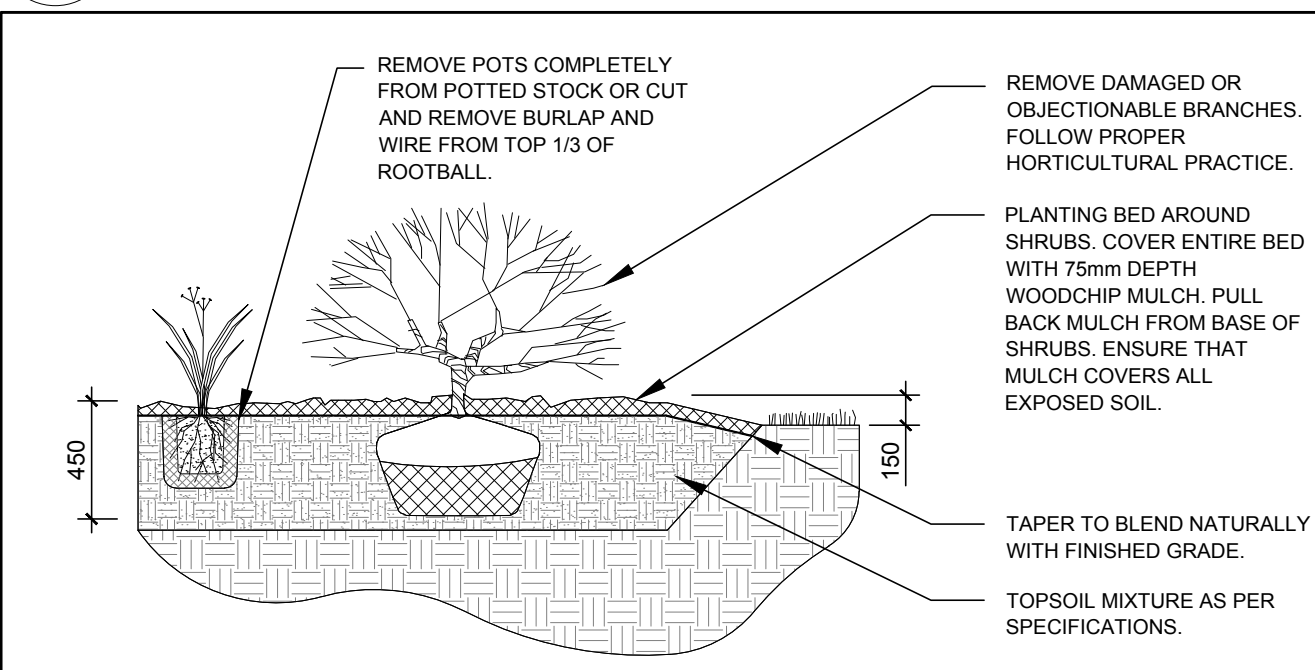
*NATIVE TO ONTARIO. ALL SHRUBS ARE PROPOSED ON PRIVATE PROPERTY



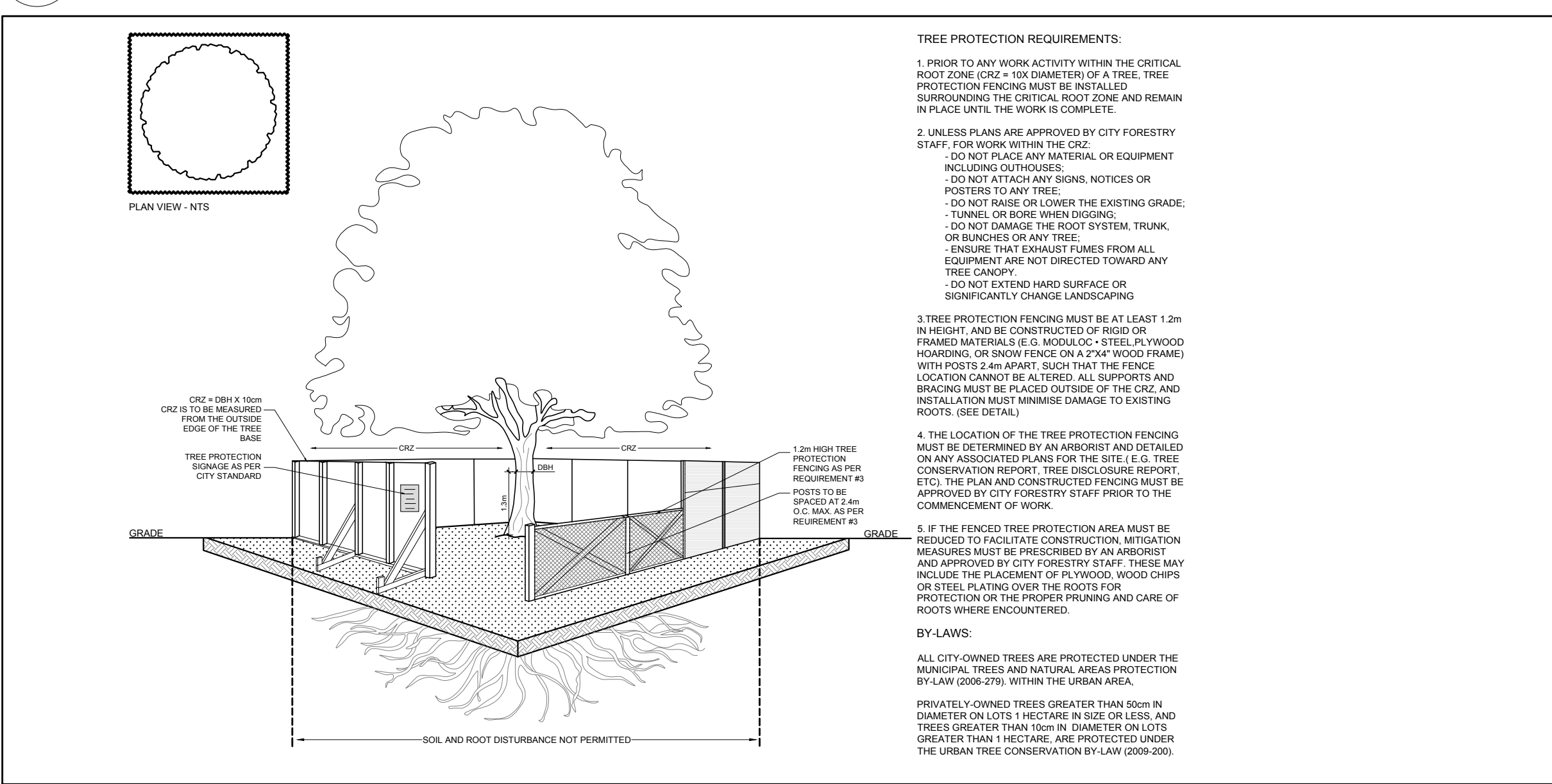
1 TREE CONSERVATION REPORT & LANDSCAPE PLAN
L.1 SCALE 1:250



2 DECIDUOUS TREE PLANTING
L.1 SCALE: NTS



3 SHRUB / ORNAMENTAL GRASS PLANTING
L.1 SCALE: NTS



4 TREE PROTECTION FENCE
L.1 SCALE: NTS

EXISTING TREE LIST

KEY	QTY.	BOTANICAL NAME	COMMON NAME	SIZE	CONDITION	REMARKS	OWNERSHIP	COMMENTS
1	1	Acer saccharum	Sugar Maple	460mm DBH	DEAD	To remain	NCC	Tree is dead with 0% leaf canopy
2	1	Fagus grandifolia	American Beech	350mm DBH	GOOD	To be removed	City of Ottawa	Tree is in good condition
3	1	Fragaria spp.	American Beech	350mm DBH	GOOD	To remain	1146 Snow Street	3 stemmed tree is in good condition
4	1	Populus tremuloides	Trembling Aspen	350mm DBH	GOOD	To remain	NCC	Tree is in good condition
5	1	Populus tremuloides	Trembling Aspen	400mm DBH	DEAD	To remain	NCC	Tree is dead and has fallen over
6	1	Rhamnus cathartica	Common Buckthorn	100mm DBH	GOOD	To remain	NCC	Tree is in good condition - invasive species
7	1	Acer rubrum	Red Maple	170mm DBH	GOOD	To remain	NCC	Tree is in good condition
8	1	Tilia americana	Basswood	180mm DBH	GOOD	To remain	NCC	Tree is in good condition
9	1	Rhamnus cathartica	Common Buckthorn	3x100mm DBH	GOOD	To remain	NCC	Tree is in good condition - invasive species
10	1	Populus tremuloides	Trembling Aspen	400mm DBH	GOOD	To remain	NCC	Tree is in good condition
11	1	Ostrya virginiana	Ironwood	200mm DBH	GOOD	To remain	NCC	Tree is in good condition
12	1	Populus tremuloides	Trembling Aspen	180mm DBH	GOOD	To remain	NCC	Tree is in good condition
13	1	Populus tremuloides	Trembling Aspen	170mm DBH	GOOD	To remain	NCC	Tree is in good condition
14	1	Pinus strobus	White Pine	300mm DBH	GOOD	To remain	521 Burleigh private	Tree is in good condition - size and location estimated
15	1	Ulmus americana	American Elm	150mm DBH	GOOD	To remain	521 Burleigh private	Tree is in good condition - size and location estimated
16	1	Pinus strobus	White Pine	300mm DBH	GOOD	To remain	521 Burleigh private	Tree is in good condition - size and location estimated
17	1	Picea pungens	Colorado Spruce	150mm DBH	GOOD	To remain	517 Burleigh private	Tree is in good condition - size and location estimated
18	1	Picea glauca	White Spruce	400mm DBH	GOOD	To remain	1142 Snow Street	Tree is in good condition - size and location estimated

- GENERAL NOTES:**
- It is the responsibility of the appropriate contractor or official to report any errors, omissions or discrepancies on this plan with actual site conditions to the Landscape Architect before proceeding with construction.
 - The contractor is to notify all utility companies and authorities prior to any excavation and ascertain locations of underground services.
 - The contractor is to reinstate all areas and items damaged as a result of construction activity.
 - The contractor is to comply with all pertinent codes and by-laws.
 - The contractor is to maintain a positive surface run-off throughout the entire construction period.
 - The Landscape Architect is not responsible for subsurface conditions.
 - The contractor is to identify all existing trees to remain on site with the Landscape Architect prior to construction.
 - The contractor is to stake the proposed location of all plant material in conjunction with the Landscape Architect prior to excavation.
 - Minimum distances for selected deciduous trees are as follows:
 - Building Foundations 7.5m
 - Sidewalks 1.5m
 - Public Streets 2.5m
 - Underground Infrastructure 2.0m
 - All trees within 1m of underground utility trenches are to be excavated by hand.
 - Remove all protective wrapping from tree trunks after installation.
 - Staking of trees shall only be performed if necessary.
 - Ensure that mulch is pulled back a min. distance of 75mm from base of tree trunk.

CLIENT
1146 SNOW STREET INC.

CONSULTANTS

ARCHITECTS:
M. David Blakely Architect Inc.
2200 Prince of Wales Dr. Suite 101 Ottawa, Ontario
Phone (613) 226-8811 Fax (613) 226-7942 k2E 629

CIVIL ENGINEERS & SURVEYORS:
Stantec
Stantec Consulting Ltd.
403 - 1331 Clyde Avenue
Ottawa ON
Tel. 613.722.4420
www.stantec.com

LEGEND

- EXISTING TREE IN GOOD CONDITION TO REMAIN
- DEAD EXISTING TREE TO REMAIN
- EXISTING TREE TO BE REMOVED
- 20m³ REQUIRED SOIL VOLUME AT A 1.5m DEPTH PROPOSED DECIDUOUS TREE
- PROPOSED SHRUBS / ORNAMENTAL GRASSES
- PROPOSED TREE PROTECTION FENCE
- PROPOSED SOD
- PROPOSED RIVERSTONE MULCH

No.	Issue	Date	MM/DD/YY	DR.	CK.
6	REVISED PER CITY COMMENTS	01/27/2026		ML	JL
5	REVISED PER ZBLA COMMENTS	10/31/2025		ML	JL
4	REVISED PER CITY COMMENTS	09/14/2025		ML	JL
3	ISSUED FOR DISCUSSION AND REVIEW	02/26/2025		ML	JL
2	REVISED PER ARCH. COMMENTS	07/24/2024		ML	JL
1	ISSUED FOR DISCUSSION AND REVIEW	07/23/2024		ML	JL

JAMES B. LENNOX & ASSOCIATES INC. LANDSCAPE ARCHITECTS
3332 CARLING AVE. OTTAWA, ONTARIO K2J 5A8
Tel. (613) 732-5168 Fax. (866) 343-3942

PROJECT
4 STOREY - 43 UNIT APARTMENT BUILDING
1146 SNOW STREET, OTTAWA ON

DRAWING
TREE CONSERVATION REPORT & LANDSCAPE PLAN

STAMP
ASSOCIATION OF LANDSCAPE ARCHITECTS OF ONTARIO
MEMBER
JBL

SCALE
AS SHOWN

START DATE
JULY 2024

PROJECT NO.
24MIS2435

PROJECT NORTH

DRAWING NO.
L.1

PLOT SIZE ARCH-D