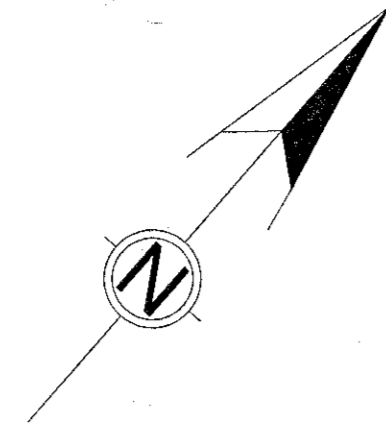


PLAN OF SURVEY OF  
**PART LOT 21**  
**CONCESSION 11**  
 Geographic Township of Huntley  
 CITY OF OTTAWA  
 SCALE 1 : 1000 METRES

G.A. SMITH  
 ONTARIO LAND SURVEYOR



DISTANCES AND COORDINATES SHOWN ON THIS PLAN ARE IN METRES AND CAN BE CONVERTED TO FEET BY DIVIDING BY 0.3048

DISTANCES ARE GROUND AND CAN BE CONVERTED TO GRID BY MULTIPLYING BY THE COMBINED SCALE FACTOR OF 0.99989

BEARINGS ARE MTM GRID, DERIVED FROM OBSERVED REFERENCE POINTS A & B, BY REAL TIME NETWORK (RTN) OBSERVATIONS, MTM ZONE 9 NAD83 (CSRS) (1997)

FOR BEARING COMPARISONS A ROTATION OF 0°15'20" COUNTERCLOCKWISE WAS APPLIED TO BEARINGS ON PLAN SR-2133 TO CONVERT TO GRID BEARINGS. A ROTATION OF 0°18'20" COUNTERCLOCKWISE WAS APPLIED TO BEARINGS ON PLAN BY S.E. & H.R. FARLEY, DATED MARCH 23, 1973, TO CONVERT TO GRID BEARINGS.

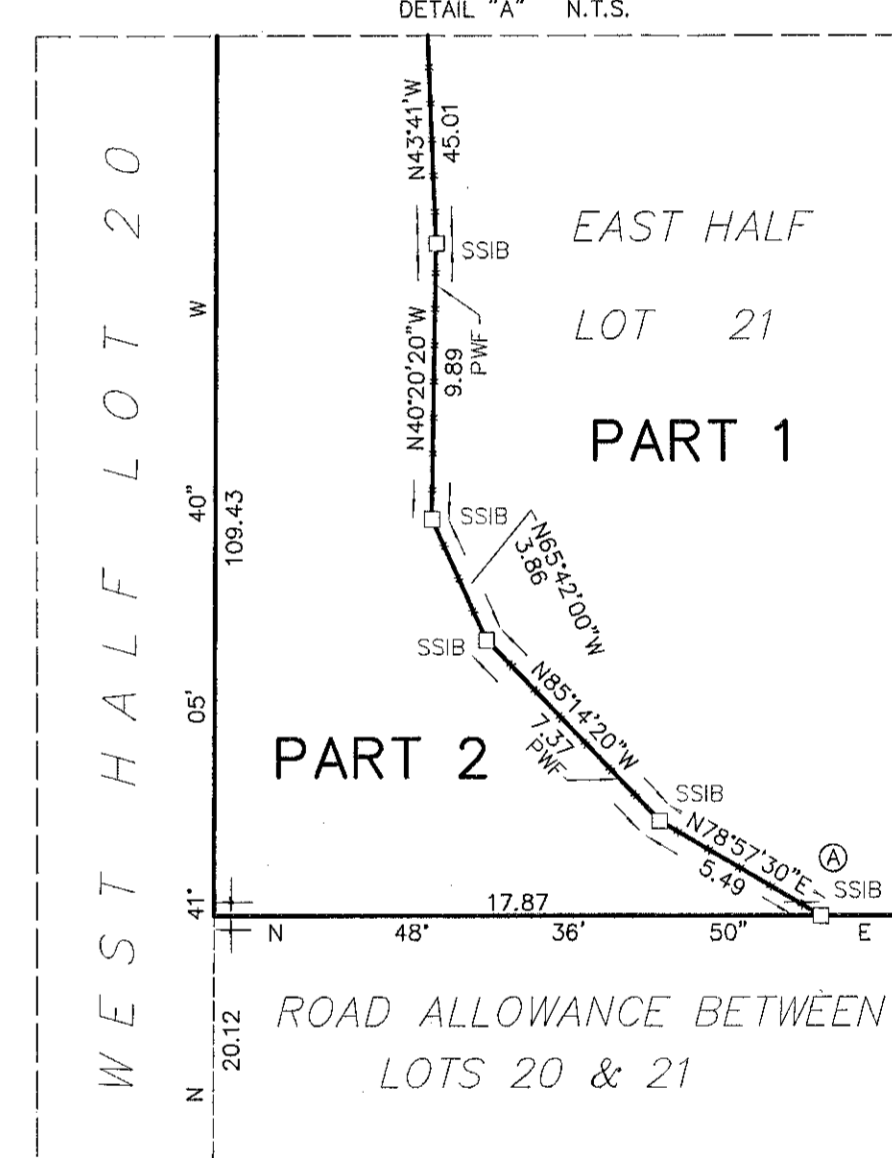
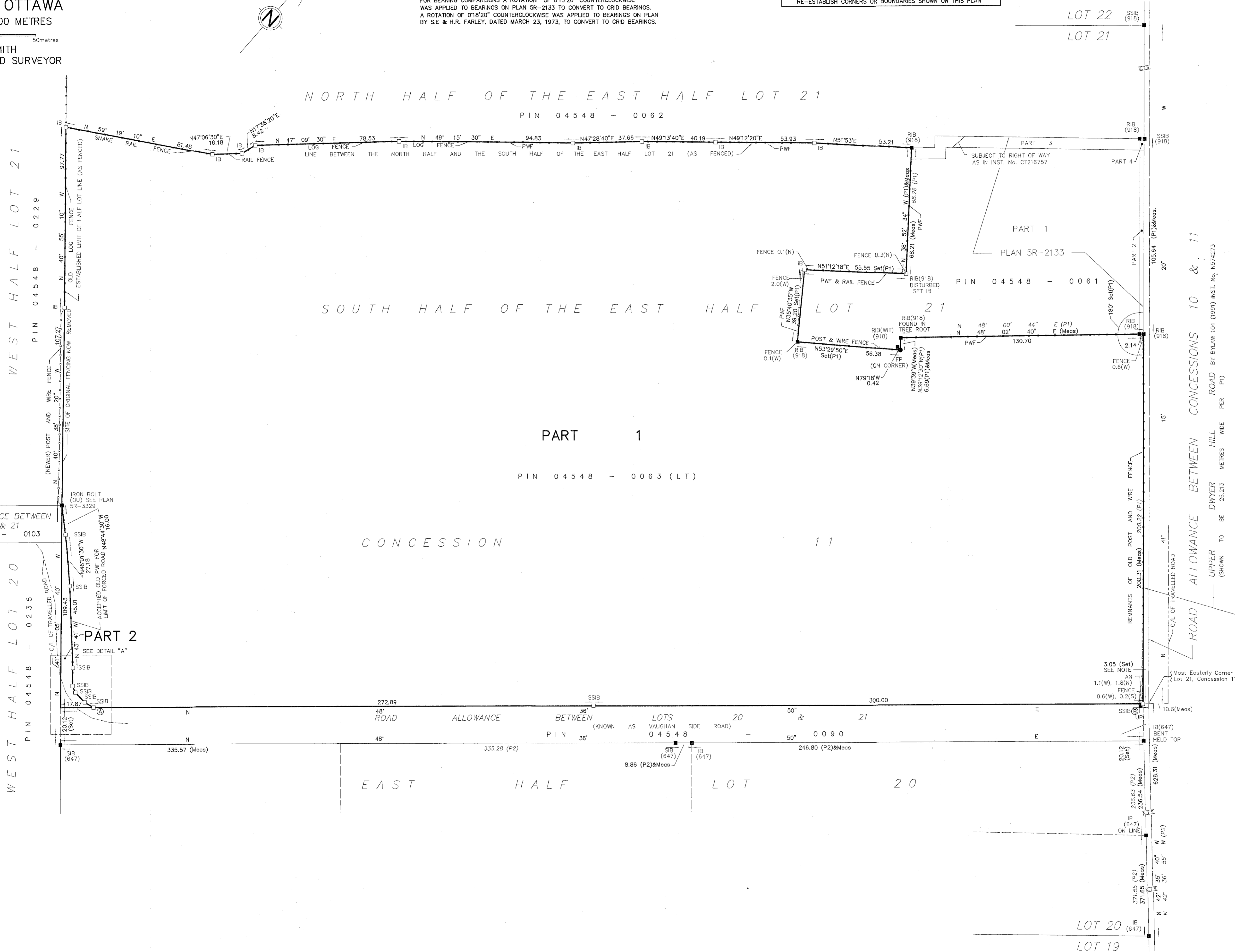
**INTEGRATION DATA**

POINT ID	NORTHING	EASTING
ORP A	5016146.6	331554.0
ORP B	5016525.3	331983.8

COORDINATES CANNOT, IN THEMSELVES, BE USED TO RE-ESTABLISH CORNERS OR BOUNDARIES SHOWN ON THIS PLAN

SCHEDULE			
PART	LOT	CONCESSION	PIN
1	PT. EAST HALF 21	11	PART OF 04548-0063 (LT)
2			PART OF 04548-0063 (LT)

PARTS 1 AND 2 COMPRISE ALL OF PIN 04548-0063 (LT)



PLAN 4R-31501  
 RECEIVED AND DEPOSITED  
 DATE October 29, 2018  
 "J. Hansen"  
 REPRESENTATIVE FOR  
 LAND REGISTRAR FOR  
 THE LAND TITLES DIVISION  
 OF OTTAWA-CARLETON (4)  
 I REQUIRE THIS PLAN TO BE  
 DEPOSITED UNDER THE LAND  
 TITLES ACT.  
 DATED OCTOBER 11, 2018  
 G.A. SMITH  
 ONTARIO LAND SURVEYOR

**SURVEYOR'S CERTIFICATE**  
 I CERTIFY THAT:  
 1. THIS SURVEY AND PLAN ARE CORRECT AND IN ACCORDANCE WITH THE SURVEYS ACT, THE SURVEYORS ACT, THE LAND TITLES ACT AND THE REGULATIONS MADE UNDER THEM.  
 2. THE SURVEY WAS COMPLETED ON AUG. 29, 2018  
 DATE OCTOBER 11, 2018  
 G.A. SMITH  
 ONTARIO LAND SURVEYOR

- LEGEND & NOTES**
- - MONUMENT FOUND
  - - MONUMENT SET
  - IB - IRON BAR
  - SSB - STANDARD IRON BAR
  - SSIB - SHORT STANDARD IRON BAR
  - RIB - ROUND IRON BAR
  - CP - CONCRETE PIN
  - WT - WITNESS
  - (WT) - WITNESS
  - (OU) - ORIGIN UNKNOWN
  - PWF - POST AND WIRE FENCE
  - UP - UTILITY POLE
  - AN - ANCHOR
  - NTS - NOT TO SCALE
  - C/L - CENTRELINE
  - (647) - S.E. & H.R. FARLEY O.L.S.
  - (918) - ANDREW GIBSON O.L.S.
  - (P1) - PLAN SR-2133
  - (P2) - PLAN BY S.E. & H.R. FARLEY O.L.S. DATED MARCH 23, 1973 (PLAN OF FICHE)

NOTE: PLAN SR-2133 INDICATES UPPER DWYER HILL ROAD IS 26.213 METRES WIDE BETWEEN THE FENCES. ACCEPTED SPLIT OF FENCES FOR CENTRELINE OF ROAD ALLOWANCE BETWEEN CONCESSIONS 10 & 11

SSIBS HAVE BEEN SET DUE TO INSUFFICIENT OVERBURDEN