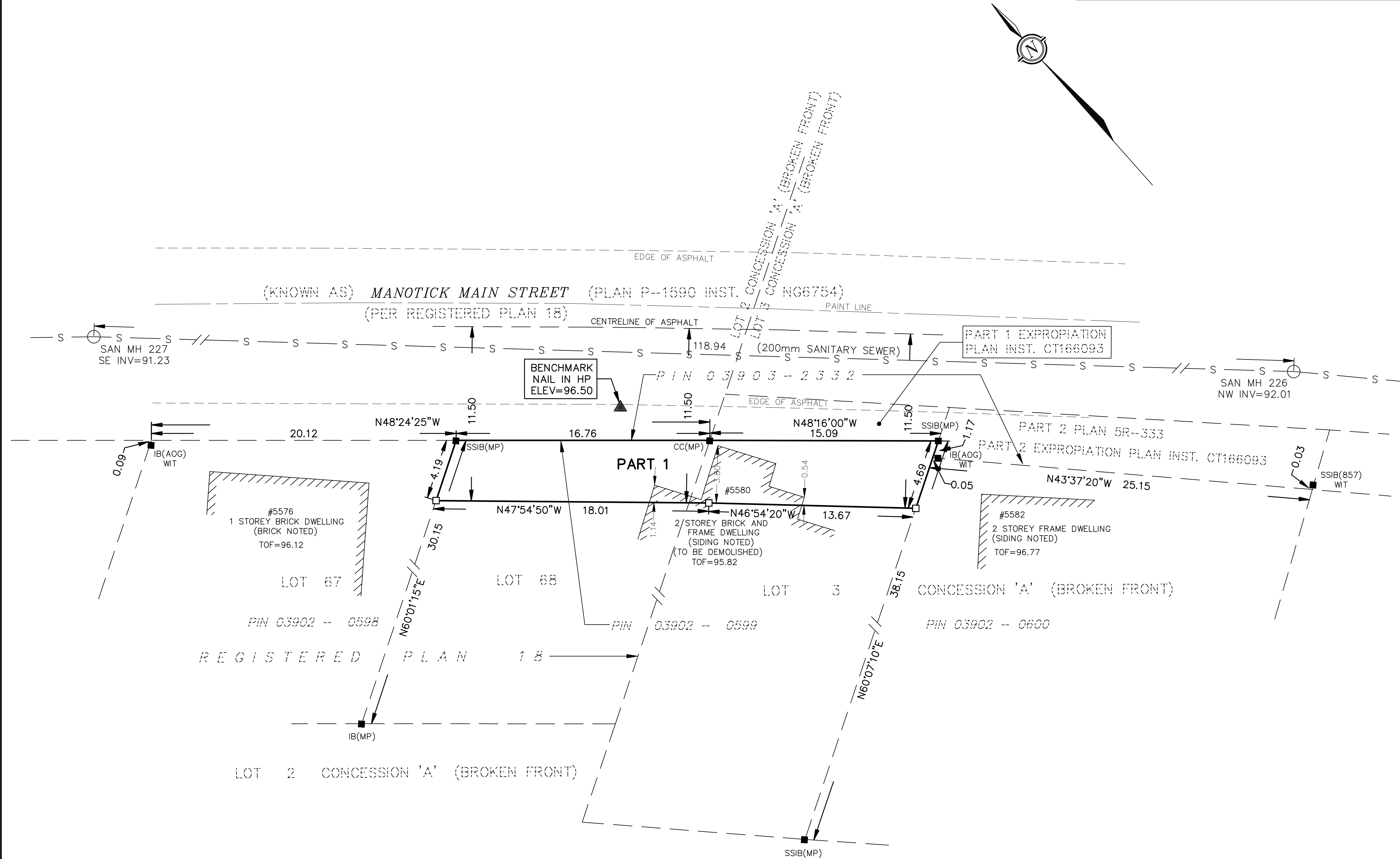
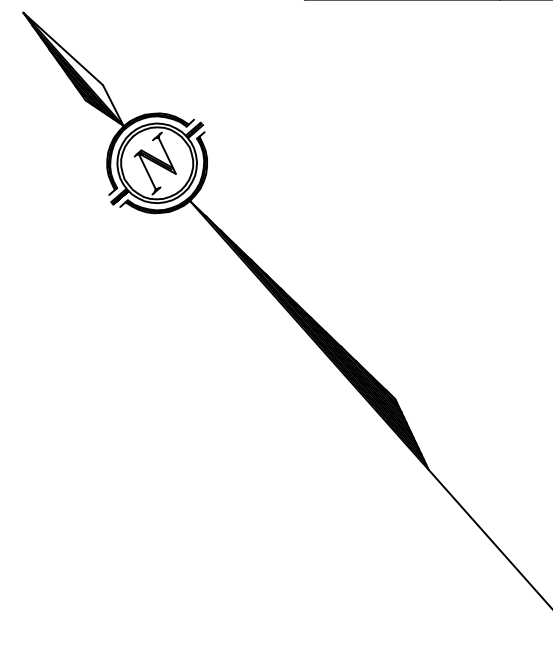


**METRIC**  
DISTANCES AND COORDINATES SHOWN ON THIS PLAN ARE IN METRES AND CAN BE CONVERTED TO FEET BY DIVIDING BY 0.3048

SCHEDULE				
PART	LOT	PLAN/CON	PIN	AREA(sq.m.)
1	PART OF LOT 68	REGISTERED PLAN 18	PART OF 03902-0599	132
	PART OF LOT 3	CONCESSION 'A' (BF)		



PLAN OF SURVEY OF  
LOT 68  
REGISTERED PLAN 18  
AND PART OF LOT 3  
CONCESSION 'A' (BROKEN FRONT)  
GEOGRAPHIC TOWNSHIP OF NORTH GOWER  
CITY OF OTTAWA

SCALE 1 : 200  
0 5 10 20 metres  
THE INTENDED PLOT SIZE OF THIS PLAN IS 430mm IN HEIGHT BY 650mm IN WIDTH WHEN PLOTTED AT A SCALE OF 1:200.  
**FAIRHALL, MOFFATT & WOODLAND LIMITED**  
ONTARIO LAND SURVEYORS

**NOTES**  
1. BEARINGS ARE GRID, DERIVED FROM OBSERVED REFERENCE POINTS AND BY REAL TIME NETWORK OBSERVATIONS AND ARE REFERRED TO THE CENTRAL MERIDIAN, 76°30'W LONGITUDE MTM ZONE 9, NAD83 (CSRS 2010).  
2. DISTANCES ARE GROUND AND CAN BE CONVERTED TO GRID BY MULTIPLYING BY THE COMBINED SCALE FACTOR \*\*\*\*\*.

**SURVEYOR'S CERTIFICATE**  
I CERTIFY THAT:  
1. THIS SURVEY AND PLAN ARE CORRECT AND IN ACCORDANCE WITH THE SURVEYS ACT, THE SURVEYORS ACT, THE LAND TITLES ACT AND THE REGULATIONS MADE UNDER THEM.  
2. THE SURVEY WAS COMPLETED ON ....

DATE \_\_\_\_\_ JOHN H. GUTRI  
ONTARIO LAND SURVEYOR

THIS PLAN OF SURVEY RELATES TO AOLS PLAN SUBMISSION FORM NUMBER .....

**UTILITY NOTES**  
1. THIS DRAWING CANNOT BE ACCEPTED AS ACKNOWLEDGING ANY UNDERGROUND UTILITIES AND IT WILL BE THE RESPONSIBILITY OF THE USER TO CONTACT THE RESPECTIVE UTILITY AUTHORITIES FOR CONFIRMATION OR LOCATION.  
2. UNDERGROUND UTILITIES, AS REPORTED ON THIS DRAWING, ARE NOT BASED ON AN ACTUAL 'FIELD LOCATE' BY THE RESPECTIVE UTILITY AGENCIES BUT HAVE BEEN COMPILED FROM DATA OBTAINED FROM THE FOLLOWING SOURCE:  
a) CITY OF OTTAWA  
3. BEFORE ANY WORK INVOLVING PROBING, EXCAVATING, ETC., A FIELD LOCATION OF UNDERGROUND PLANT BY THE PERTINENT UTILITY AUTHORITY IS MANDATORY.

**LEGEND**  
□ - SURVEY MONUMENT SET  
■ - SURVEY MONUMENT FOUND  
SIB - STANDARD IRON BAR  
SSIB - SHORT STANDARD IRON BAR  
IB - IRON BAR  
(P) - REGISTERED PLAN  
(S) - SET  
(M) - MEASURED  
(857) - FAIRHALL, MOFFATT & WOODLAND LIMITED, O.L.S.  
PIN - PROPERTY IDENTIFIER NUMBER  
(MP) - MACINTOSH PERRY SURVEYING INC.  
(AOG) - ANNIS, O'SULLIVAN, VOLLEBEKK LTD. O.L.S.

COORDINATES WERE DERIVED FROM REAL TIME NETWORK OBSERVATIONS (SMARTNET) MTM ZONE 9, NAD83 (CSRS 2010).  
COORDINATES HAVE BEEN DETERMINED TO AN URBAN ACCURACY IN ACCORDANCE WITH SECTION 14(2) OF O.REG 216/10.

POINT ID	NORTHING	EASTING
*	*	*
*	*	*

COORDINATES CANNOT IN THEMSELVES BE USED TO RE-ESTABLISH CORNERS OR BOUNDARIES SHOWN ON THIS PLAN.

<p><b>Fairhall Moffatt &amp; Woodland</b> LIMITED ONTARIO LAND SURVEYORS Surveying and Land Information Services 100-600 TERRY FOX DRIVE, KANATA, ONTARIO K2L 4B6 TEL: (613) 591-2580 FAX: (613) 591-1495 www.fmw.on.ca</p>	<p>JOB No. AE15000</p>
	<p>REFERENCE No. 17 - 18 NORTH GOWER</p>