

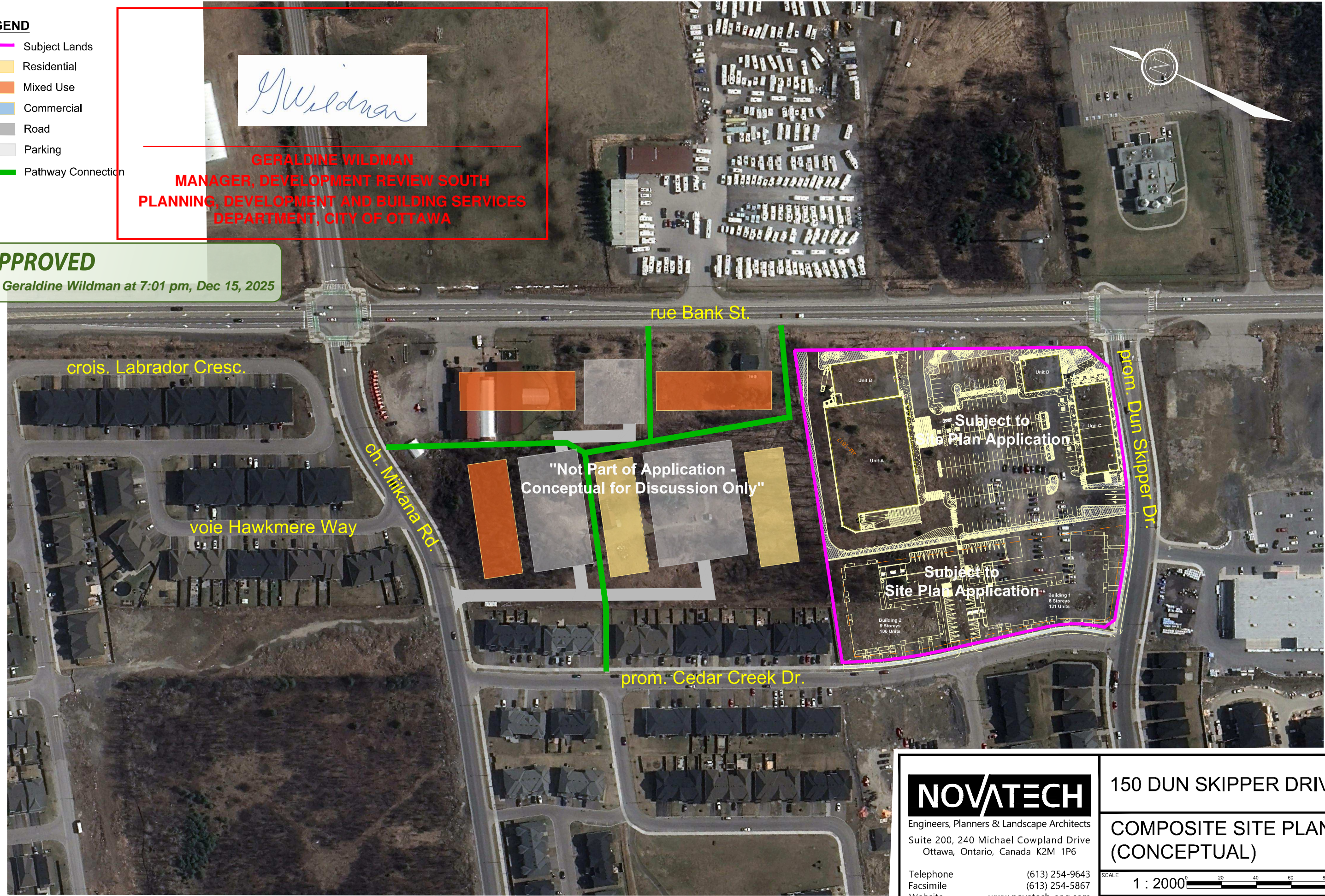
LEGEND

- Subject Lands
- Residential
- Mixed Use
- Commercial
- Road
- Parking
- Pathway Connection

G. Wildman

GERALDINE WILDMAN
MANAGER, DEVELOPMENT REVIEW SOUTH
PLANNING, DEVELOPMENT AND BUILDING SERVICES
DEPARTMENT, CITY OF OTTAWA

APPROVED
 By Geraldine Wildman at 7:01 pm, Dec 15, 2025



NOVATECH
 Engineers, Planners & Landscape Architects
 Suite 200, 240 Michael Cowpland Drive
 Ottawa, Ontario, Canada K2M 1P6

Telephone (613) 254-9643
 Facsimile (613) 254-5867
 Website www.novatech-eng.com

150 DUN SKIPPER DRIVE

**COMPOSITE SITE PLAN
 (CONCEPTUAL)**

SCALE	1 : 2000	
DATE	JAN 2025	FIGURE 124107-FIG1
JOB	124107	

M:\2024\124107\CAD\Planning\Figures\124107-FIG1.dwg, 11x17 landscape, Jan 16, 2025 - 11:00am, wslöss