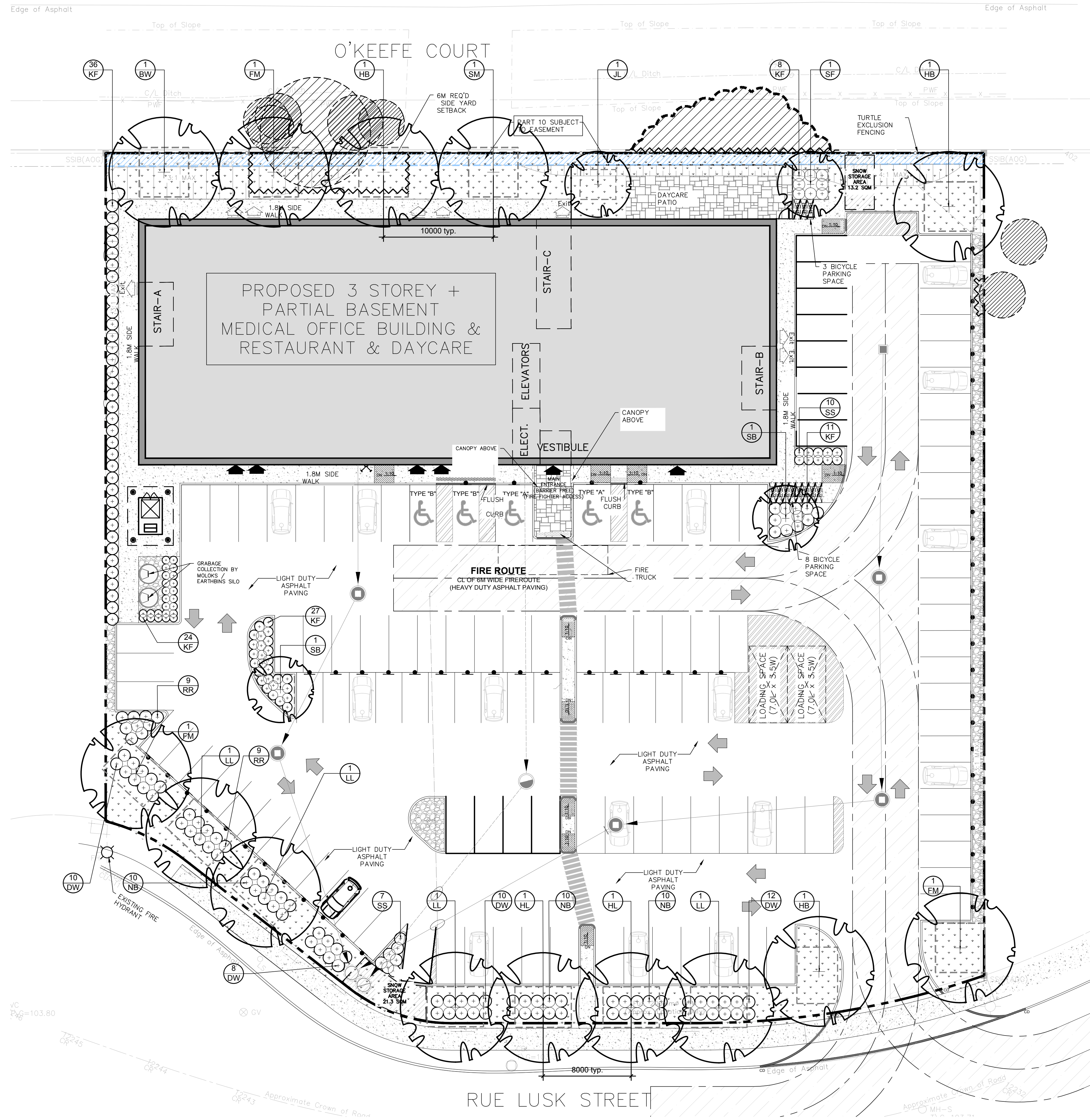
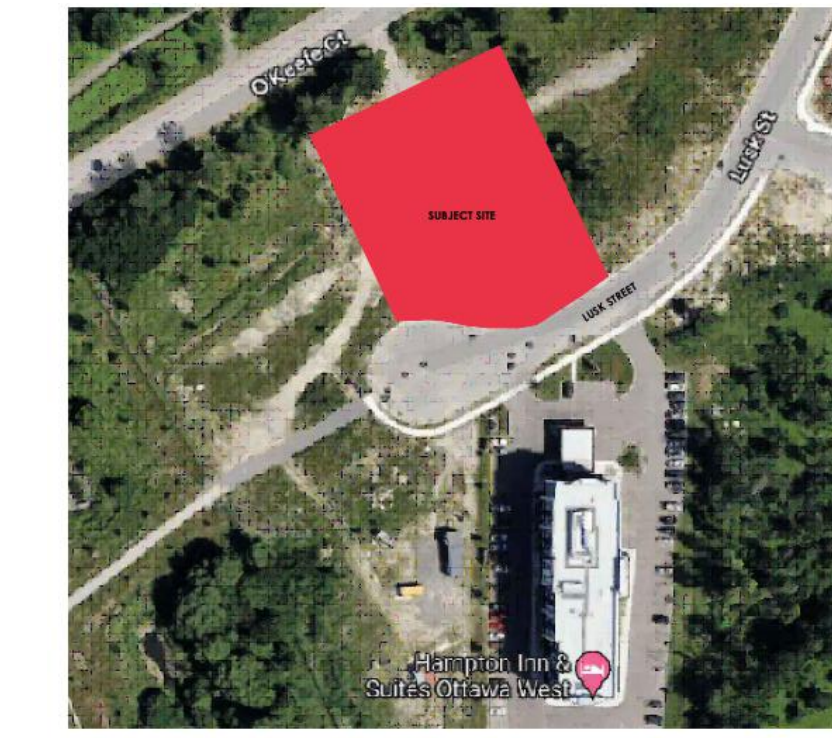


BLOCK 2
REGISTERED PLAN 4M-1634
CITY OF OTTAWA

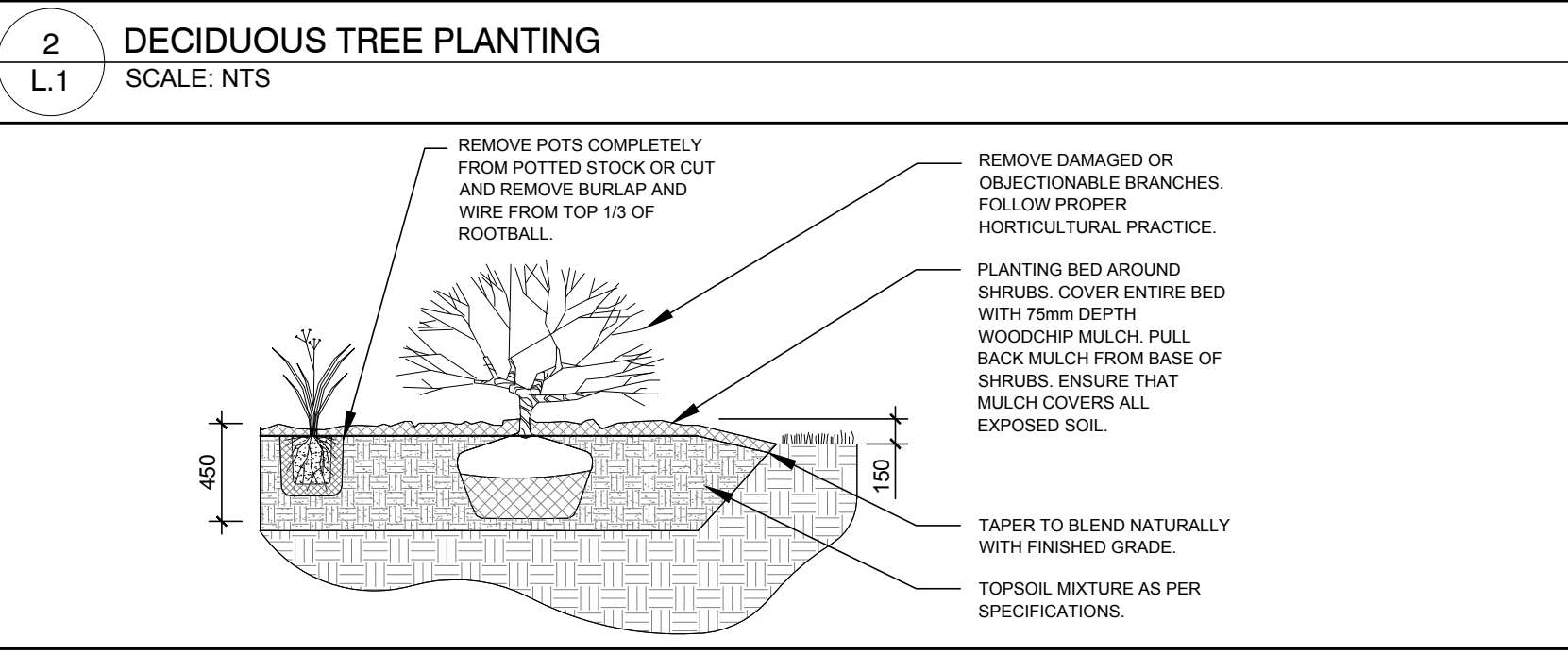
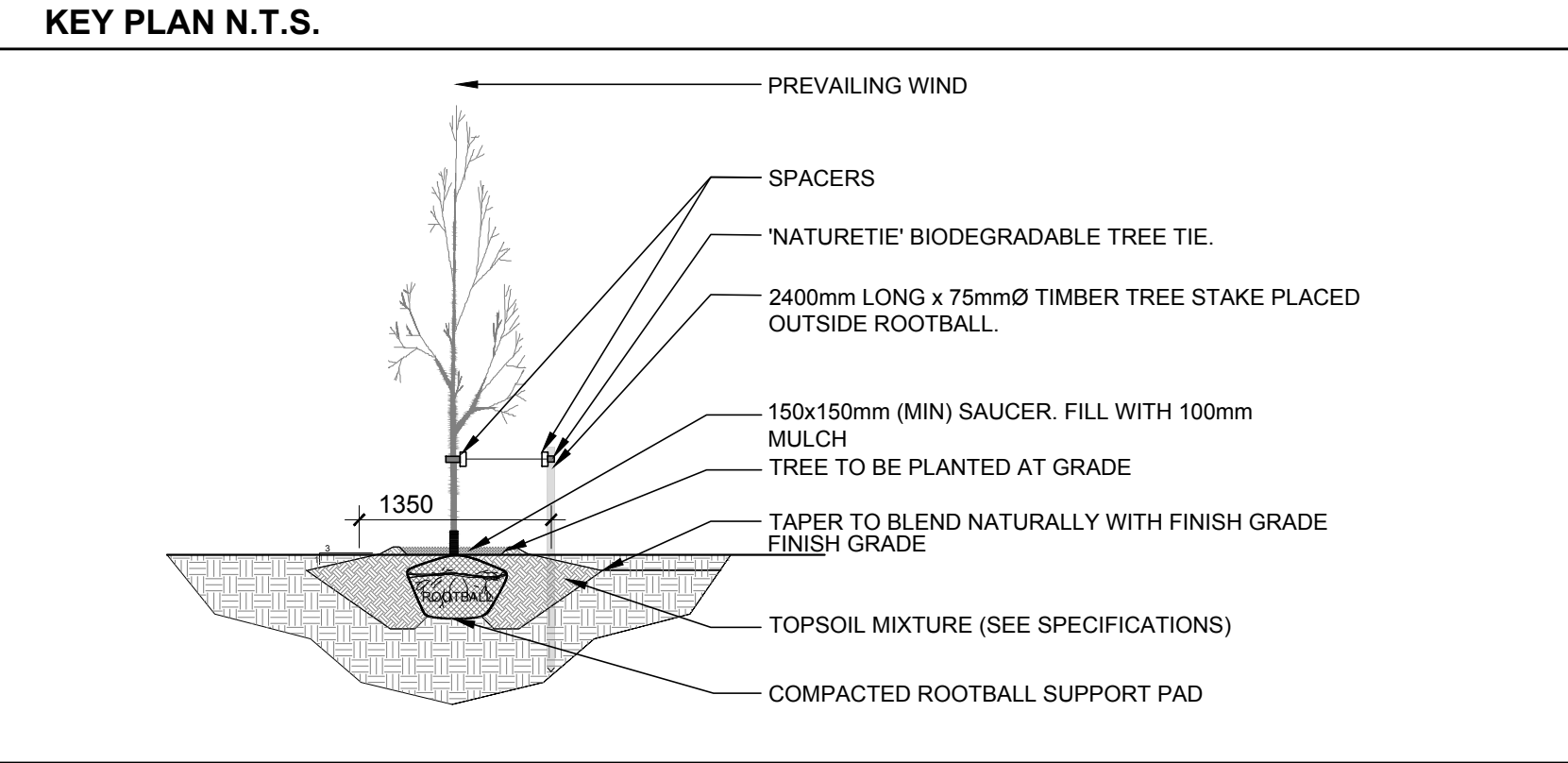


1 LANDSCAPE PLAN
L.1 SCALE 1:200

RUE LUSK STREET



40 YEAR CANOPY CALCULATION:
-6034 m2 site area
12 large trees proposed (154m2 ea), 2 medium trees proposed (79m2 ea) and 3 small trees proposed (7m2 ea).
=2,027m2 canopy cover = 33.6% canopy cover
***Large deciduous tree calculated at 14m spread, medium deciduous trees at 10m spread and small deciduous trees at 3m spread**



GENERAL NOTES:
1. It is the responsibility of the appropriate contractor or official to report any errors, omissions or discrepancies on this plan with actual site conditions to the Landscape Architect before proceeding with construction.
2. The contractor is to notify all utility companies and authorities prior to any excavation and ascertain locations of underground services.
3. The contractor is to reinstatement all areas and items damaged as a result of construction activity.
4. The contractor is to comply with all pertinent codes and by-laws.
5. The contractor is to maintain a positive surface run-off throughout the entire construction period.
6. The Landscape Architect is not responsible for subsurface conditions.
7. The contractor is to identify all existing trees to remain on site with the Landscape Architect prior to construction.
8. The contractor is to stake the proposed location of all plant material in conjunction with the Landscape Architect prior to excavation.
9. Minimum distances for selected deciduous trees are as follows:
- Building Foundations 7.5m
- Sidewalks 1.5m
- Public Streets 2.5m
- Underground Infrastructure 2.0m
10. All trees within 1m of underground utility trenches are to be excavated by hand.
11. Remove all protective wrapping from tree trunks after installation.
12. Staking of trees shall only be performed if necessary.
13. Ensure that mulch is pulled back a min. distance of 75mm from base of tree trunk.

PROPOSED PLANT LIST (QTY KEY)

KEY	qty.	BOTANICAL NAME	COMMON NAME	SIZE	CONDITION	REMARKS
TREES						
BW	1	Tilia americana	Basswood	50mm ø	B&B	Native
FM	3	Acer x freemanii	Freeman's Maple	50mm ø	B&B	Native
HB	3	Celtis occidentalis	Hackberry	50mm ø	B&B	Native
HL	2	Gleditsia triacanthos	Honey Locust	50mm ø	B&B	Native to S. Ont
JL	1	Syringa reticulata	Japanese Tree Lilac	50mm ø	B&B	
LL	4	Tilia cordata	Littleleaf Linden	50mm ø	B&B	
SB	2	Amelanchier canadensis	Serviceberry	50mm ø	B&B	Native
SF	1	Amelanchier laevis 'JFS-ARB'	Spring Flurry Serviceberry	50mm ø	B&B	Native
SM	1	Acer saccharum	Sugar Maple	50mm ø	B&B	Native
SHRUBS						
DW	40	Spiraea x vanhouttei	Bridalwreath Spiraea	800 mm ht.	Potted	1200mm o.c.
NB	30	Physocarpus opulifolius	Ninebark	800 mm ht.	Potted	1000mm o.c. Native
RR	18	Rosa rugosa	Rugosa Rose	800mm ht.	Potted	1200 mm o.c.
SS	17	Sorbaria sorbifolia 'Sem'	Sem False Spiraea	800 mm ht.	Potted	1200mm o.c.
ORNAMENTAL GRASSES						
KF	106	Calamagrostis 'Karl Foerster'	Feather Reed Grass	250mm pot	Potted	800mm o.c.

NOTE: ALL PLANT MATERIAL IS PROPOSED ON PRIVATE PROPERTY

CLIENT
Dr. Sandra Iroakazi

CONSULTANTS
ARCHITECTS: **MATAJ ARCHITECTS INC.**
96 Forsythe Street, Oakville Ontario
Tel: (905) 281-4444

CIVIL ENGINEERS: **ARCADIS OTTAWA**
333 PRESTON STREET SUITE 500
OTTAWA, ON K1S 5N4
Tel: (613) 721-0555

SURVEYORS: **ANNIS, O'SULLIVAN, VOLLEBEKK INC.**
14 CONCOURSE GATE SUITE 500
OTTAWA, ON K2E 7S6
Tel: (613) 727-0850

LEGEND

- PROPOSED PRECAST CONCRETE PAVERS
- PROPOSED SOD
- PROPOSED RIVERSTONE MULCH
- REQUIRED SOIL VOLUME (20m3 FOR SMALL, 25m3 FOR MEDIUM AND 30m3 FOR LARGE TREE) AT A 1.5m DEPTH
- PROPOSED DECIDUOUS TREE
- PROPOSED SHRUBS / ORNAMENTAL GRASSES
- PROPOSED CONCRETE SIDEWALK
- PROPOSED TURTLE EXCLUSION FENCING
- PROPOSED 1.2m HL. ORNAMENTAL METAL FENCE
- EXISTING TREE TO REMAIN
- GROUP OF EXISTING TREES TO REMAIN
- TREE PROTECTION FENCE

No.	Issue	Date	DR	CK
7	REVISED PER CITY COMMENTS	12/03/2025	ML	JL
6	REVISED PER CITY COMMENTS	11/14/2025	ML	JL
5	REVISED PER NEW CIVIL DRAWING	09/18/2025	ML	JL
4	REVISED PER CITY COMMENTS	08/18/2025	ML	JL
3	ISSUED FOR FORESTRY REVIEW	01/16/2025	ML	JL
2	ISSUED FOR DISCUSSION AND REVIEW	12/02/2024	ML	JL
1	ISSUED FOR DISCUSSION AND REVIEW	05/28/2024	ML	JL

JAMES B. LENNOX & ASSOCIATES INC. LANDSCAPE ARCHITECTS
3332 CARLING AVE. OTTAWA, ONTARIO K2H 5A5
Tel: (613) 722-5168 Fax: (866) 343-3942

PROJECT
LUSK MEDICAL BUILDING
120 LUSK STREET, OTTAWA ON

DRAWING
LANDSCAPE PLAN

STAMP
ASSOCIATION OF LANDSCAPE ARCHITECTS OF ONTARIO
MEMBER
JBL

SCALE
AS SHOWN

START DATE
MAY 2024

PROJECT NO.
24MIS2428

PROJECT NORTH
DRAWING NO.
L.1

PLOT SIZE ARCH-D