



Stantec Consulting Ltd.  
400 - 1331 Clyde Avenue  
Ottawa ON  
Tel. 613.722.4420  
www.stantec.com

Copyright Reserved  
The Contractor shall verify and be responsible for all dimensions. DO NOT scale the drawing - any errors or omissions shall be reported to Stantec without delay.  
The Copyrights to all designs and drawings are the property of Stantec. Reproduction or use for any purpose other than that authorized by Stantec is forbidden.

**Legend**

- R100A** (0.31 | 50) SANITARY DRAINAGE AREA ID#  
POPULATION COUNT
- G100A** (0.11 | INFL) SANITARY DRAINAGE AREA ID#  
INFILTRATION FLOW RATE  
0.33 L/s/Hq APPLIED
- I100A** (0.11 | INST) SANITARY DRAINAGE AREA ID#  
INSTITUTION FLOW RATE  
28 000 L/Hq/day APPLIED
- SANITARY DRAINAGE AREA** (thick black line)
- PROPOSED SANITARY MH AND SEWER** (solid black line with dots)
- EXISTING SANITARY MH AND SEWER** (dashed black line with dots)

**Notes**

		SANITARY STATS			
BUILDING	UNIT TYPE	COUNT	PPU	POP	
PARKWAY HOUSE	1 BR	43	1.4	60	
	2 BR	19	2.1	40	
	STUDIO	13	1.4	18	
	LIC	12	1.0	12	
<b>TOTAL</b>		<b>87</b>		<b>130</b>	
WEST TOWER (T1)	1 BR	90	1.4	126	
	2 BR	59	2.1	124	
	STUDIO	15	1.4	21	
	3 BR	15	3.1	47	
<b>TOTAL</b>		<b>179</b>		<b>317</b>	
EAST TOWER (T2)	1 BR	170	1.4	238	
	2 BR	122	2.1	256	
	3 BR	19	3.1	59	
	<b>TOTAL</b>		<b>311</b>		<b>1001</b>
<b>TOTAL</b>		<b>577</b>		<b>1001</b>	

Revision	By	Appd.	YY.MM.DD
3	JP	PM	25.02.12
2	JP	PM	24.11.28
1	JP	PM	24.03.28

File Name: 160401689-DB.dwg  
Dwn. Chkd. Dgn. JP PM 24.02.28 YY.MM.DD

Permit-Seal

Client/Project  
**WINDMILL DEVELOPMENT GROUP LTD.**

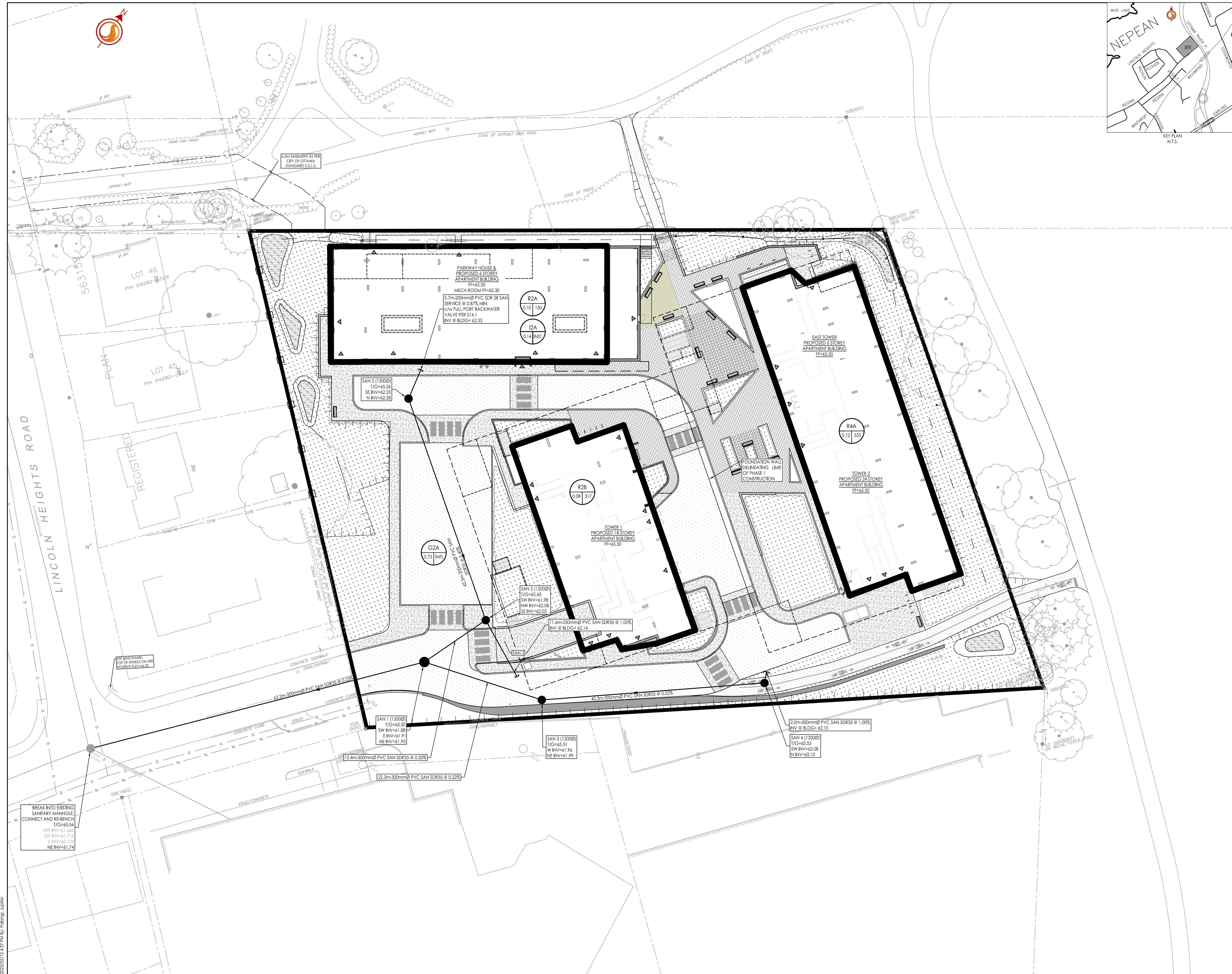
2475 REGINA STREET  
Ottawa, ON

Title  
**SANITARY DRAINAGE PLAN**

Project No. 160401689  
Drawing No. SA-1

Scale 1:300  
Sheet 11 of 12

Revision 3



V:\Projects\160401689-DB.dwg Design Drawing Detailed Design\160401689-DB.dwg  
 2025/02/13 2:52 PM by J.P. Thiffault  
 ORIGINAL SHEET - ARCH-D