

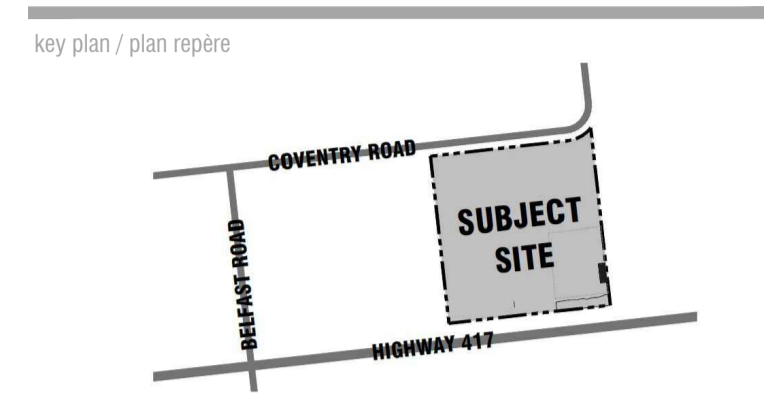


**NOTES:**

DO NOT SCALE DRAWINGS;  
 SITE PLAN SUPPLIED BY Turner Fleischer Architects Inc., SURVEY SUPPLIED BY Annis, O'Sullivan, Vollebek Ltd. Fotenn Consultants Inc. IS NOT RESPONSIBLE FOR ACCURACY OF BASE INFORMATION;  
 GENERAL VEGETATIVE COVER INVENTORY IS BASED ON FIELD REVIEW VISIT CONDUCTED JULY AND DECEMBER OF 2023 BY IFS ASSOCIATES;  
 THIS PLAN IS TO BE READ IN CONJUNCTION WITH "TREE CONSERVATION REPORT FOR 500 COVENTRY ROAD, OTTAWA" PREPARED BY IFS ASSOCIATES;

**NOT FOR CONSTRUCTION**

Copyright Reserved  
 The Copyrights to all designs and drawings are the property of Fotenn Consultants Inc. Unauthorized reproduction or use is forbidden. DO NOT SCALE DRAWING  
 Copyright réservés  
 Les droits d'auteur à tous les modèles et dessins sont la propriété de Fotenn Consultants Inc. Reproduction ou utilisation non autorisée est interdite. NE PAS L'ÉCHELLE DE Dessin



- Legend / légende
- EXISTING TREES AND HEDGEROW TREE-LINE AS SURVEYED
  - EXISTING TREES NOT PICKED UP IN SURVEY
  - CRITICAL ROOTING ZONE (CRZ IDENTIFIED - REFER TO TABLE # FOR RADIUS OF CRZ)
  - TREE PROTECTION FENCING - REFER TO 1-TC2
  - EXISTING TREES TO BE REMOVED

rev'n	description / la description	yyyy/mm/dd
05	Issue for submission	2026/01/16
04	Issue for coordination	2026/01/07
03	Issue for coordination	2025/12/19
02	Updated per City comments	2025/03/12
01	Issue for submission	2024/11/14
00	Issue for Phase 2 Pre-Consultation	2023/12/22

**FOTENN Planning + Design**  
 420 O'Connor Street  
 Ottawa, ON, CANADA K2P 1W4  
 613.730.5709  
 fotenn.com

north / le nord stamp / le cachet

project / projet  
**500 COVENTRY ROAD**  
 (LOT 1, REGISTERED PLAN 747, CITY OF OTTAWA)

drawing / dessin  
**TREE CONSERVATION PLAN - EXISTING CONDITIONS**

designed / conçu <b>DF / SP</b>	drawn / dessiné <b>SP / DF</b>	reviewed / examiné <b>ST / DF</b>
date <b>Dec 2023</b>		
drawing number / No. du dessin		

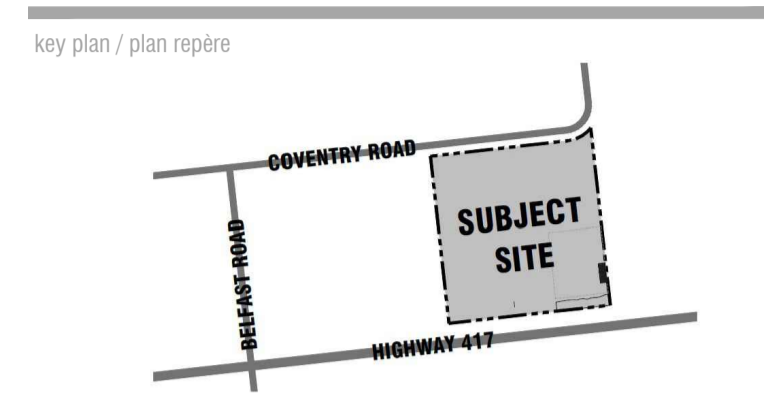
**TCR1**

PLOT INFORMATION: DWG NAME: P:\PROJECTS\Morguard\500 Coventry\LANDSCAPE\01\_Design\500 Coventry SHEET TCR1.dwg PLOT DATE: 2026-01-16 10:28:06 AM SHEET SIZE: ISO full bleed A1 (841.0x 1191.0)mm PLOTTED BY: Sydney Tremblay LAST SAVED BY: emilia

File #007-12-24-0151 | Plan #1027



Copyright Reserved  
 The Copyrights to all designs and drawings are the property of Fotenn Consultants Inc. Unauthorized reproduction or use is forbidden. DO NOT SCALE DRAWING  
 Copyright réservés  
 Les droits d'auteur à tous les modèles et dessins sont la propriété de Fotenn Consultants Inc. Reproduction ou utilisation non autorisée est interdite. NE PAS L'ÉCHELLE DE DESSIN



- legend / légende
- EXISTING TREES AND HEDGEROW TREE-LINE AS SURVEYED
  - EXISTING TREES NOT PICKED UP IN SURVEY
  - CRITICAL ROOTING ZONE (CRZ IDENTIFIED - REFER TO TABLE # FOR RADIUS OF CRZ)
  - TREE PROTECTION FENCING - REFER TO T-C2
  - EXISTING TREES TO BE REMOVED

rev'n	description / la description	yyyy/mm/dd
05	Issue for submission	2026/01/16
04	Issue for coordination	2026/01/07
03	Issue for coordination	2025/12/19
02	Updated per City comments	2025/03/12
01	Issue for submission	2024/11/14
00	Issue for Phase 2 Pre-Consultation	2023/12/22

**FOTENN Planning + Design**  
 420 O'Connor Street  
 Ottawa, ON, CANADA K2P 1W4  
 613.730.5709  
 fotenn.com

north / le nord stamp / le cachet

project / projet  
**500 COVENTRY ROAD**  
 (LOT 1, REGISTERED PLAN 747, CITY OF OTTAWA)

drawing / dessin  
**TREE CONSERVATION PLAN - PROPOSED DEVELOPMENT**

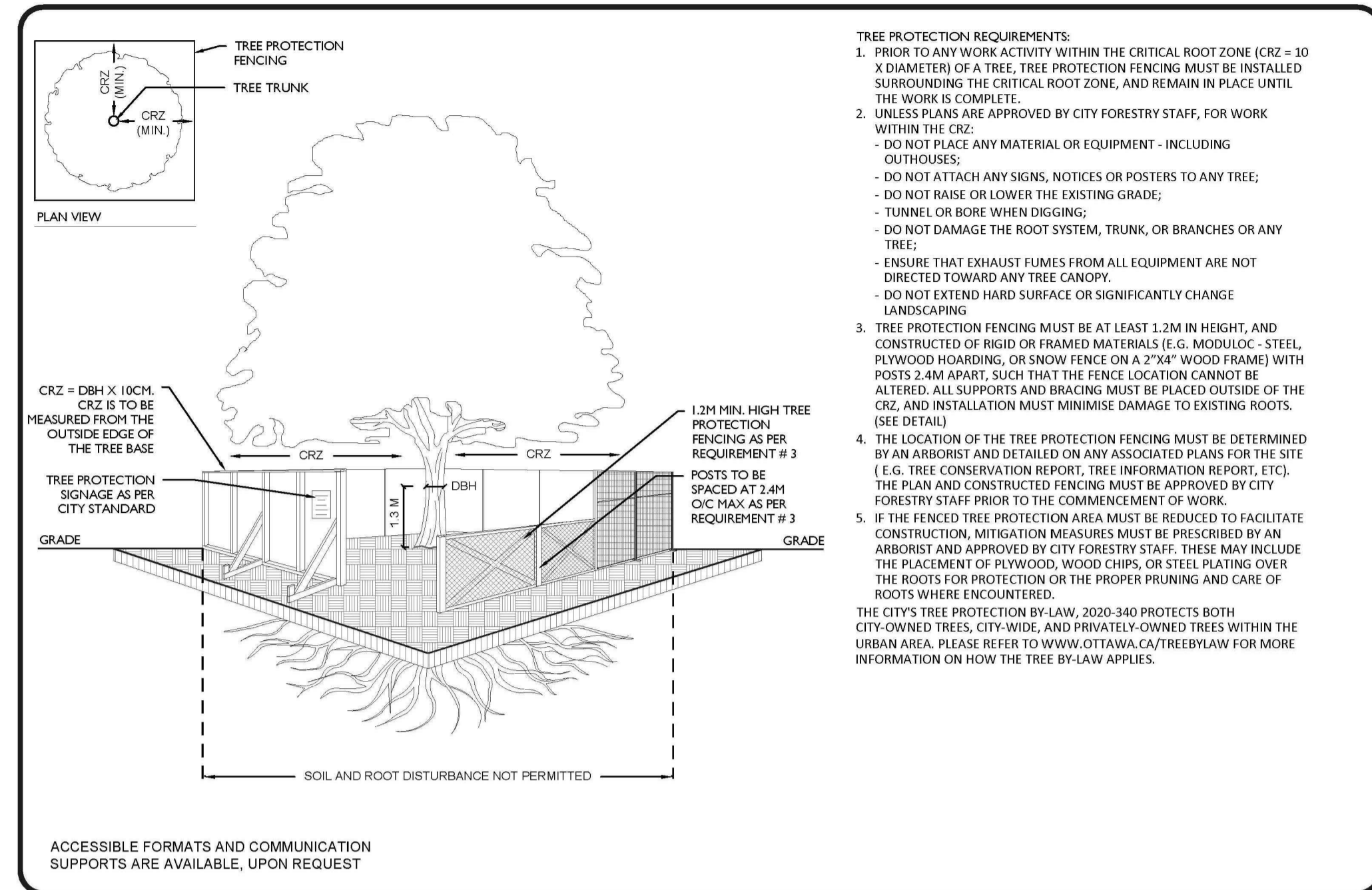
designed / conçu <b>DF / SP</b>	drawn / dessiné <b>SP / DF</b>	reviewed / examiné <b>ST / DF</b>
date <b>Dec 2023</b>		
drawing number / No. du projet		

drawing number / No. du dessin  
**TCR2**

**1 TREE CONSERVATION PLAN**  
**TCR2 1:400**

PLOT INFORMATION: DWG NAME: P:\PROJECTS\Morguard\500 Coventry\500 Coventry SHEET TCR2.dwg PLOT DATE: 2026-01-16 10:29:38 AM SHEET SIZE: ISO full bleed A1 (841.0x 1191.0) MM PLOTTED BY: Sydney Tremblay LAST SAVED BY: eridiana

File #007-12-24-0151 | Plan #1027



**ACCESSIBLE FORMATS AND COMMUNICATION SUPPORTS ARE AVAILABLE, UPON REQUEST**

**SCALE:** NTS

**DATE:** MARCH 2021

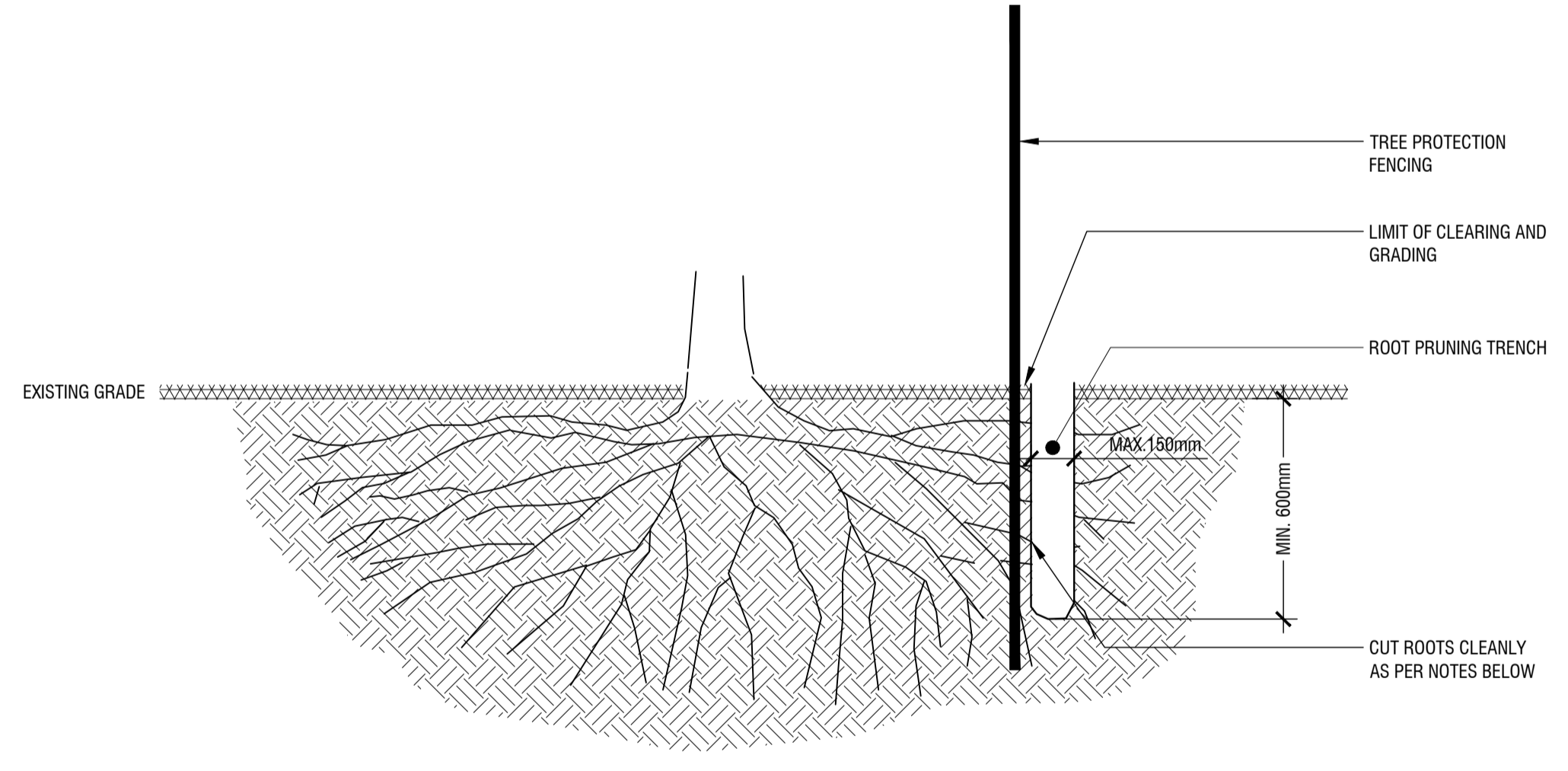
**DRAWING NO.:** 1 of 1

**OTTAWA**

**TREE PROTECTION SPECIFICATION**

TO BE IMPLEMENTED FOR RETAINED TREES, BOTH ON SITE AND ON ADJACENT SITES, PRIOR TO ANY TREE REMOVAL OR SITE WORKS AND MAINTAINED FOR THE DURATION OF WORK ACTIVITIES ON SITE.

**1 CITY OF OTTAWA TREE PROTECTION DETAIL**  
n.t.s.



- NOTES:**
- PROPER ROOT PRUNING TECHNIQUE REQUIRED WHEN TREE ROOTS ENCOUNTERED DURING EXCAVATION.
  - EXCAVATIONS WITHIN DRIPLINE SHOULD BE BY DIRECTIONAL MICRO-TUNNELLING AND BORING. OUTSIDE THE DRIPLINE, ROOTS SHOULD BE CUT CLEANLY (AS PER ABOVE DRAWING) WITH PRUNING SHEARS OR A SAW WIPED WITH ALCOHOL BEFORE EACH CUT.
  - AFTER ROOTS ARE CLEANLY CUT, THE AREA SHOULD BE BACKFILLED WITH SUITABLE MATERIAL (TO BE APPROVED BY LANDSCAPE ARCHITECT) TO PREVENT DESSICATION; WHERE APPROPRIATE, THE TREES SHALL UNDERGO AN OVERALL PRUNING TO RESTORE TREE APPEARANCE AND / OR RESTORE THE BALANCE BETWEEN TOP GROWTH AND ROOTS. DO NOT PRUNE LEADERS.

**2 ROOT PRUNING DETAIL**  
n.t.s.

**NOT FOR CONSTRUCTION**

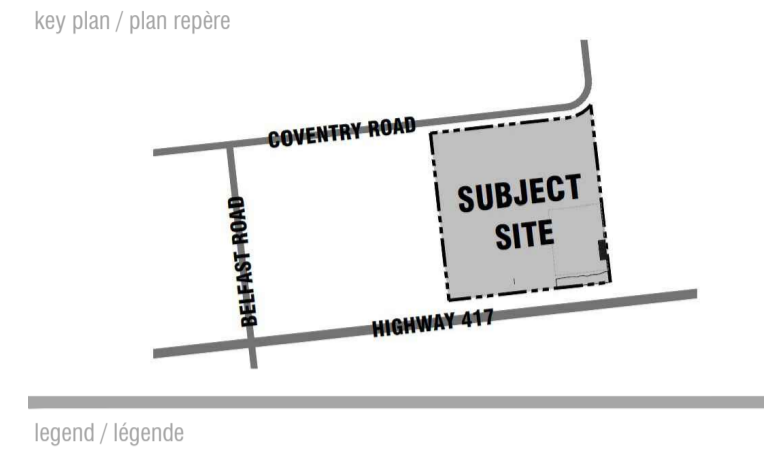
**TABLE 1: TREE INVENTORY AND ASSESSMENT**

NO.	SPECIES	D.B.H. <sup>1</sup> (cm)	OWNERSHIP <sup>2</sup>	TREE CONDITION, AGE CLASS, CONDITION NOTES & SPECIES ORIGIN <sup>3</sup> / STATUS (TO BE PRESERVED AND PROTECTED OR REMOVED)	STATUS <sup>4</sup>	CRZ <sup>5</sup> (m)
1	Russian-olive (Elaeagnus angustifolia)	17 avg.	Private	Poor; mature; tri-dominant stems from grade, one stem has failed; introduced invasive species / to be preserved and protected	To be <b>RETAINED</b>	1.7 Avg.
2	Basewood (Tilia americana)	21 & 31	Shared	Fair; mature; dominant stem with suppressed secondary stem on north; likely originated as coppice growth; native species / to be preserved and protected	To be <b>RETAINED</b>	2.1 & 3.1
3	Scots pine (Pinus sylvestris)	54.0	Private	Fair; very mature; single dominant stem; vine growth into lower crown; understory of buckthorn and Russian-olive; good crown density, annual increment and needle colour; introduced invasive species / to be preserved and protected	To be <b>RETAINED</b>	5.4
4	Honey-locust (Gleditsia triacanthos)	10.0	Private	Fair; immature; suffering from growing stress due to very limited available rooting area; introduced species to Eastern Ontario / to be preserved and protected	To be <b>RETAINED</b>	1.0
5	Honey-locust (Gleditsia triacanthos)	10.0	Private	Fair; immature; suffering from growing stress due to very limited available rooting area; introduced species to Eastern Ontario / to be preserved and protected	To be <b>RETAINED</b>	1.0
6	Honey-locust (Gleditsia triacanthos)	10.0	Private	Fair; immature; suffering from growing stress due to very limited available rooting area; introduced species to Eastern Ontario / to be preserved and protected	To be <b>RETAINED</b>	1.0
7	Honey-locust (Gleditsia triacanthos)	10.0	Private	Fair; immature; suffering from growing stress due to very limited available rooting area; introduced species to Eastern Ontario / to be preserved and protected	To be <b>RETAINED</b>	1.0
8	Honey-locust (Gleditsia triacanthos)	17.0	Private	Fair; maturing; suffering from growing stress due to moderately limited available rooting area; introduced species to Eastern Ontario / to be preserved and protected	To be <b>RETAINED</b>	1.7
9	Honey-locust (Gleditsia triacanthos)	24.0	Private	Fair; maturing; suffering from growing stress due to mildly limited available rooting area; crown asymmetric towards north; introduced species to Eastern Ontario / to be preserved and protected	To be <b>RETAINED</b>	2.4
10	Little-leaf linden (Tilia cordata)	34.0	Private	Good; mature; tri-dominant stems at 3m - co-dominant and one suppressed; introduced species / to be preserved and protected	To be <b>RETAINED</b>	3.4
11	Little-leaf linden (Tilia cordata)	31.0	Private	Fair; mature; central stem with suppressed laterals at 2m on south and 3m on southeast; salt spray injury to lower crown; introduced species / to be preserved and protected	To be <b>RETAINED</b>	3.1
12	Little-leaf linden (Tilia cordata)	10.0	Private	"Poor; immature; covered in heavy vine growth; introduced species / to be preserved and protected"	To be <b>RETAINED</b>	1.0
13	Little-leaf linden (Tilia cordata)	31.0	Private	Fair; mature; central dominant stem with suppressed laterals at 3.5m on north and south; salt spray injury to lower crown; introduced species / to be preserved and protected	To be <b>RETAINED</b>	3.1
14	Little-leaf linden (Tilia cordata)	29.0	Private	Fair; mature; central with suppressed laterals at 3m on south and 3.5m on north; salt spray injury to lower crown; introduced species / to be preserved and protected	To be <b>RETAINED</b>	2.9
15	Scots pine (Pinus sylvestris)	20.0	Private	"Good; maturing; generally upright form; co-dominant leaders at 2m - parallel; good crown density, annual increment and needle colour; introduced invasive species / to be preserved and protected"	To be <b>RETAINED</b>	2.0
16	Scots pine (Pinus sylvestris)	26.0	Private	Good; mature; central stem divergent towards northeast; suppressed, upsweep lateral at 2m on south; good crown density, annual increment and needle colour; introduced invasive species / to be preserved and protected	To be <b>RETAINED</b>	2.6
17	Scots pine (Pinus sylvestris)	26.0	Private	Fair; mature; central stem very divergent towards northeast; competing laterals at 2-2.5m on south and suppressed lateral at 1.25m on southeast; good crown density, annual increment and needle colour; introduced invasive species / to be preserved and protected	<b>REMOVE</b> to accommodate future park block servicing	2.6
18	Honey-locust (Gleditsia triacanthos)	20.0	Private	Good; maturing; co-dominant stems at 1.5m with suppressed lateral towards east; introduced species to Eastern Ontario / to be preserved and protected	To be <b>RETAINED</b>	2.0
19	Honey-locust (Gleditsia triacanthos)	18.0	Private	Very good; maturing; central, dominant stem with competing leaders near apex; introduced species to Eastern Ontario / to be preserved and protected	To be <b>RETAINED</b>	1.8
20	Scots pine (Pinus sylvestris)	26.0	Private	Good; mature; central stem with generally symmetric crown; good crown density, annual increment and needle colour; introduced invasive species / to be preserved and protected	To be <b>RETAINED</b>	2.6
21	Scots pine (Pinus sylvestris)	20.0	Private	Fair; mature; living crown held high due to vine growth and influence of Manitoba maple growth below; fair crown density, annual increment and needle colour; introduced invasive species / to be preserved and protected	To be <b>RETAINED</b>	2.0
22	Scots pine (Pinus sylvestris)	28.0	Private	"Fair; mature; central stem with generally symmetric crown; good crown density, annual increment and needle colour; introduced invasive species / to be preserved and protected"	To be <b>RETAINED</b>	2.8
23	Colorado spruce (Picea pungens)	27.0	Private	Good; mature; lower crown asymmetric due to nearby buckthorn growth; sweep in main stem at 7m; good crown density, annual increment and needle colour; introduced species / to be preserved and protected	To be <b>RETAINED</b>	2.7
24	Colorado spruce (Picea pungens)	28.0	Private	Poor; mature; central stem with suppressed lateral at 2.5m; poor crown density, annual increment and needle colour; sweep in main stem at 7m; introduced species / to be preserved and protected	To be <b>RETAINED</b>	2.8
25	Colorado spruce (Picea pungens)	26.0	Private	Fair; mature; central stem with sweep at 5m; lower crown asymmetric due to influence of nearby Scots pine and Manitoba maples; good crown density, annual increment and needle colour; introduced species / to be preserved and protected	To be <b>RETAINED</b>	2.6
26	Manitoba maple (Acer negundo)	15 avg.	Private	Very poor; mature; four-stemmed at grade; growing through c/l fence; girdled at base; naturalized species; originated from seed / to be preserved and protected	To be <b>RETAINED</b>	1.5 Avg.
27	Scots pine (Pinus sylvestris)	21.0	Private	Fair; mature; central stem with sweep at 4m; crown asymmetric towards west due to nearby Manitoba maple; fair crown density, annual increment and needle colour; introduced invasive species / to be preserved and protected	To be <b>RETAINED</b>	2.1
28	White elm (Ulmus americana)	15 avg.	Private	Poor; mature; co-dominant stems at 1.5m - likely topped in past; growing through c/l fence; native species; originated from seed / to be preserved and protected	To be <b>RETAINED</b>	1.5 Avg.
29	Scots pine (Pinus sylvestris)	24.0	Private	Fair; mature; central dominant stem to top; fair crown density, annual increment and needle colour; introduced invasive species / to be preserved and protected	To be <b>RETAINED</b>	2.4
30	Scots pine (Pinus sylvestris)	27.0	Private	Fair; mature; central stem with competing leaders at 4m; fair crown density, annual increment and needle colour; introduced invasive species / to be preserved and protected	To be <b>RETAINED</b>	2.7
31	Manitoba maple (Acer negundo)	42.0	Private	Very poor; mature; broken at 6.5m - remaining crown dying back; suppressed lateral at 2m on east; naturalized species / to be preserved and protected	To be <b>RETAINED</b>	4.2
32	Scots pine (Pinus sylvestris)	30 avg.	Neighbour	Fair; mature; grouping of seven pines - 2 dead, 2 in good condition, 3 suppressed & divergent in form; introduced invasive species; elm and buckthorn growing through c/l fence - originated from seed / to be preserved and protected	<b>REMOVE DEAD TREES AND BUCKTHORN</b>	3.0 Avg.
33	Red oak (Quercus rubra)	35 avg.	Neighbour	Good; mature; grouping of four trees; native species; two elm growing through c/l fence - originated from seed / to be preserved and protected	To be <b>RETAINED</b>	3.5 Avg.
34	Scots pine (Pinus sylvestris)	28.0	Neighbour	Fair; mature; upright form; fair crown density, annual increment and needle colour; introduced invasive species / to be preserved and protected	To be <b>RETAINED</b>	2.8
35	Manitoba maple (Acer negundo)	-	Private	Dead	<b>REMOVE</b>	-
36	Colorado spruce (Picea pungens)	28.0	Neighbour	Fair; mature; crown completely asymmetric towards north due to previous nearby spruce which failed recently; fair crown density, annual increment and needle colour; introduced species / to be preserved and protected	<b>REMOVE</b>	2.8
37	Colorado spruce (Picea pungens)	29.0	Neighbour	Good; mature; upright form with generally symmetric crown; fair crown density, annual increment and needle colour; introduced species / to be preserved and protected	<b>REMOVE</b>	2.9
38	Colorado spruce (Picea pungens)	19.0	Neighbour	Very poor; mature; in advanced decline - poor crown density, annual increment and needle colour; introduced species / to be preserved and protected	<b>REMOVE</b>	1.9
39	Honey-locust (Gleditsia triacanthos)	10.0	Private	Fair; immature; suffering from growing stress due to very limited available rooting area; introduced species to Eastern Ontario / to be preserved and protected	To be <b>RETAINED</b>	1.0
40	Honey-locust (Gleditsia triacanthos)	10.0	Private	Fair; immature; suffering from growing stress due to very limited available rooting area; introduced species to Eastern Ontario / to be preserved and protected	To be <b>RETAINED</b>	1.0
41	Honey-locust (Gleditsia triacanthos)	10.0	Private	Fair; immature; suffering from growing stress due to very limited available rooting area; introduced species to Eastern Ontario / to be preserved and protected	To be <b>RETAINED</b>	1.0
42	Honey-locust (Gleditsia triacanthos)	10.0	Private	Fair; immature; suffering from growing stress due to very limited available rooting area; introduced species to Eastern Ontario / to be preserved and protected	To be <b>RETAINED</b>	1.0

<sup>1</sup> DIAMETER AT BREAST HEIGHT, OR 1.4m FROM GRADE (UNLESS OTHERWISE NOTED), AVERAGE DIAMETERS INDICATE INDIVIDUAL MULTI-STEMMED TREES OR AVERAGE DIAMETERS WITHIN TREE GROUPINGS;  
<sup>2</sup> AS DETERMINED FROM TOPOGRAPHIC SURVEY PREPARED BY ANNIS, O'SULLIVAN, VOLLEBEKK LTD. IN MAY 2023;  
<sup>3</sup> ALL TREES PLANTED UNLESS OTHERWISE INDICATED;  
<sup>4</sup> TO BE RETAINED OR REMOVED  
<sup>5</sup> CRZ: INDICATES RADIUS OF CRITICAL ROOTING ZONE AND IS ESTABLISHED AS BEING 10 CENTIMETERS FROM THE TRUNK OF A TREE FOR EVERY 1 CENTIMETER OF TRUNK DIAMETER AT BREAST HEIGHT (DBH). THE CRZ IS CALCULATED AS DBH x 10cm

REFER TO RECOMMENDATIONS IN REPORT PREPARED BY IFS Associates FOR TECHNIQUES TO PRESERVE TREES.

Copyright Reserved  
 The Copyrights to all designs and drawings are the property of Fotenn Consultants Inc. Unauthorized reproduction or use is forbidden. DO NOT SCALE DRAWING  
 Copyright réservés  
 Les droits d'auteur à tous les modèles et dessins sont la propriété de Fotenn Consultants Inc. Reproduction ou utilisation non autorisée est interdite. NE PAS L'ÉCHELLE DE DESSIN

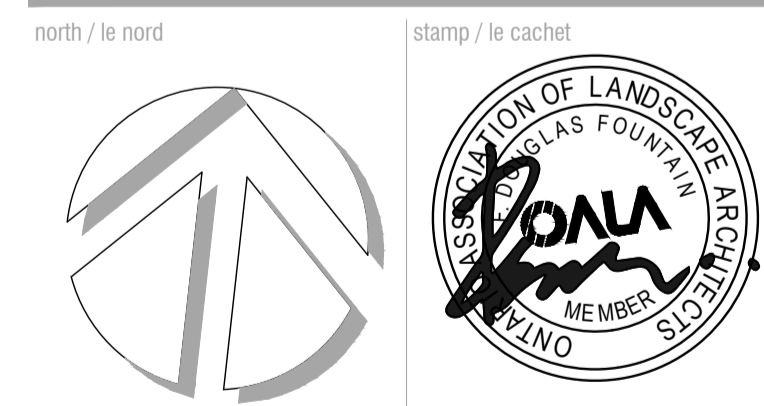


rev'n	description / la description	yyyy/mm/dd
05	Issue for submission	2026/01/16
04	Issue for coordination	2026/01/07
03	Issue for coordination	2025/12/19
02	Updated per City comments	2025/03/12
01	Issue for submission	2024/11/14
00	Issue for Phase 2 Pre-Consultation	2023/12/22

**FOTENN Planning + Design**

420 O'Connor Street  
 Ottawa, ON, CANADA K2P 1W4

613.730.5709  
 fotenn.com



project / projet

**500 COVENTRY ROAD**  
 (LOT 1, REGISTERED PLAN 747, CITY OF OTTAWA)

drawing / dessin

**TREE PROTECTION DETAILS**

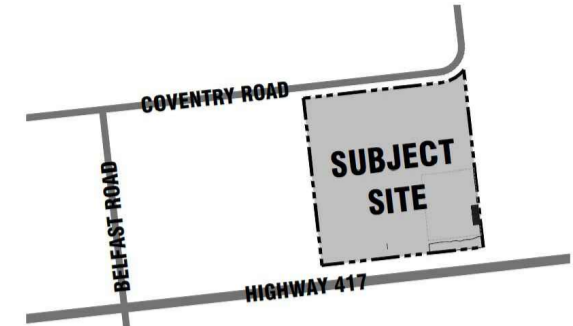
designed / conçu **DF / SP** drawn / dessiné **SP / DF** reviewed / examiné **ST / DF**

date **Dec 2023** project number / No. du projet

drawing number / No. du dessin

**TCR2**

PLOT INFORMATION: DWG NAME: P:\PROJECTS\Morguard\500 Coventry\LANDSCAPE\01 Drawings\500 Coventry\TREE TCR2.dwg PLOT DATE: 2026-01-16 10:29:12 AM SHEET SIZE: ISO full bleed A1 (594.0x 841.0) MM PLOTTED BY: Sydney Tremblay LAST SAVED BY: emedina  
 File #007-12-24-0151 | Plan #10272



- APPROXIMATE SCOPE OF WORK
- EXISTING TREES AND HEDGROW TREE-LINE AS SURVEYED - REFER TREE CONSERVATION PLANS FOR SPECIES AND HEALTH ASSESSMENTS
- EXISTING TREES NOT PICKED UP IN SURVEY
- CRITICAL ROOTING ZONE (CRZ) IDENTIFIED - REFER TO TABLE # FOR RADIUS OF CRZ
- TREE PROTECTION FENCING - REFER 1-TC2
- DECIDUOUS TREES (SEE PLANTING NOTES & SCHEDULE FOR SPECIES AND QUANTITIES)
- PROJECTED CANOPY COVERAGE IN GREEN
- CONIFEROUS TREES (SEE PLANTING SCHEDULE FOR SPECIES AND QUANTITIES)
- PERENNIAL & SHRUB PLANTING BEDS IN RAISED CONCRETE CURB (SEE PLANTING NOTES & SCHEDULE FOR SPECIES AND QUANTITIES)
- PLANT KEY
- CONCRETE UNIT PAVERS - REFER SPECIFICATIONS
- SITE FURNISHINGS BY OWNER - REFER SPECIFICATIONS
- NATURALIZED / REFORESTATION AREA (REFER TO SPECIFICATIONS AND PLANTING SCHEDULE FOR SPECIES AND QUANTITIES)

05	Issue for submission	2026/01/16
04	Issue for coordination	2026/01/07
03	Issue for coordination	2025/12/19
02	Updated per City comments	2025/03/12
01	Issue for submission	2024/11/14
00	Issue for Phase 2 Pre-Consultation	2023/12/22
rev'n	description / la description	yyyy/mm/dd

**FOTENN Planning + Design**  
 420 O'Connor Street  
 Ottawa, ON, CANADA K2P 1W4  
 613.730.5709  
 fotenn.com

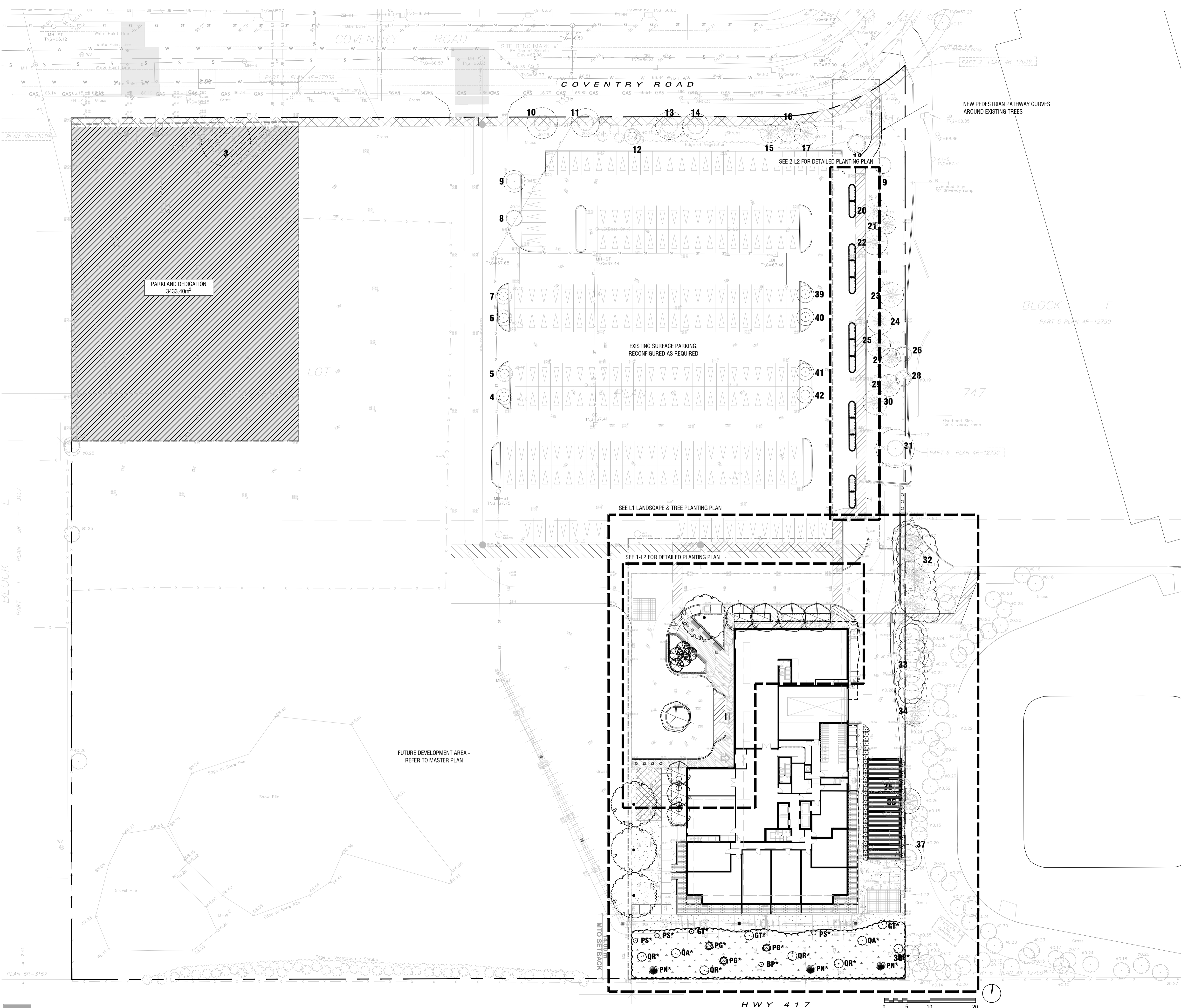
north / le nord stamp / le cachet

project / projet  
**500 COVENTRY ROAD**  
 (LOT 1, REGISTERED PLAN 747, CITY OF OTTAWA)

drawing / dessin  
**OVERALL LANDSCAPE CONTEXT PLAN**

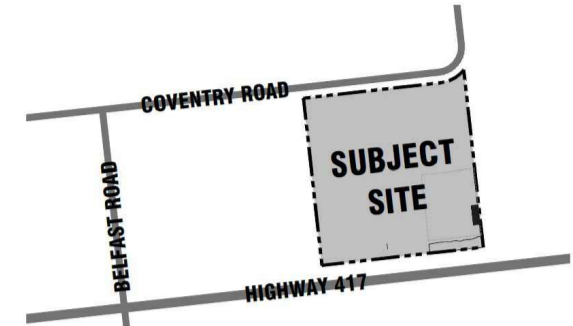
designed / conçu	drawn / dessiné	reviewed / examiné
<b>DF / SP</b>	<b>SP / DF</b>	<b>ST / DF</b>
date		
<b>Dec 2023</b>		
project number / No. du projet		

drawing number / No. du dessin  
LO



**1**  
**LO**  
**OVERALL LANDSCAPE CONTEXT PLAN**  
**1:400**





- APPROXIMATE SCOPE OF WORK
- EXISTING TREES AND HEDGEROW - REFER TREE-LINE AS SURVEYED - REFER TREE CONSERVATION PLANS FOR SPECIES AND HEALTH ASSESSMENTS
- EXISTING TREES NOT PICKED UP IN SURVEY - REFER TO TABLE # FOR RADIUS OF CRZ
- CRITICAL ROOTING ZONE (CRZ) IDENTIFIED - REFER TO TABLE # FOR RADIUS OF CRZ
- TREE PROTECTION FENCING - REFER L1-TC2

- DECIDUOUS TREES (SEE PLANTING NOTES & SCHEDULE FOR SPECIES AND QUANTITIES)
- PROJECTED CANOPY COVERAGE IN GREEN
- CONIFEROUS TREES (SEE PLANTING SCHEDULE FOR SPECIES AND QUANTITIES)
- PERENNIAL & SHRUB PLANTING BEDS IN RAISED CONCRETE CURB (SEE PLANTING NOTES & SCHEDULE FOR SPECIES AND QUANTITIES)
- PLANT KEY
- CONCRETE UNIT PAVERS - REFER SPECIFICATIONS
- SITE FURNISHINGS BY OWNER - REFER SPECIFICATIONS
- NATURALIZED / REFORESTATION AREA (REFER TO SPECIFICATIONS AND PLANTING SCHEDULE FOR SPECIES AND QUANTITIES)

rev'n	description / la description	yyyy/mm/dd
05	Issue for submission	2026/01/16
04	Issue for coordination	2026/01/07
03	Issue for coordination	2025/12/19
02	Updated per City comments	2025/03/12
01	Issue for submission	2024/11/14
00	Issue for Phase 2 Pre-Consultation	2023/12/22

**FOTENN + Design**  
420 O'Connor Street Ottawa, ON, CANADA K2P 1W4 613.730.5709 fotenn.com

north / le nord stamp / le cachet

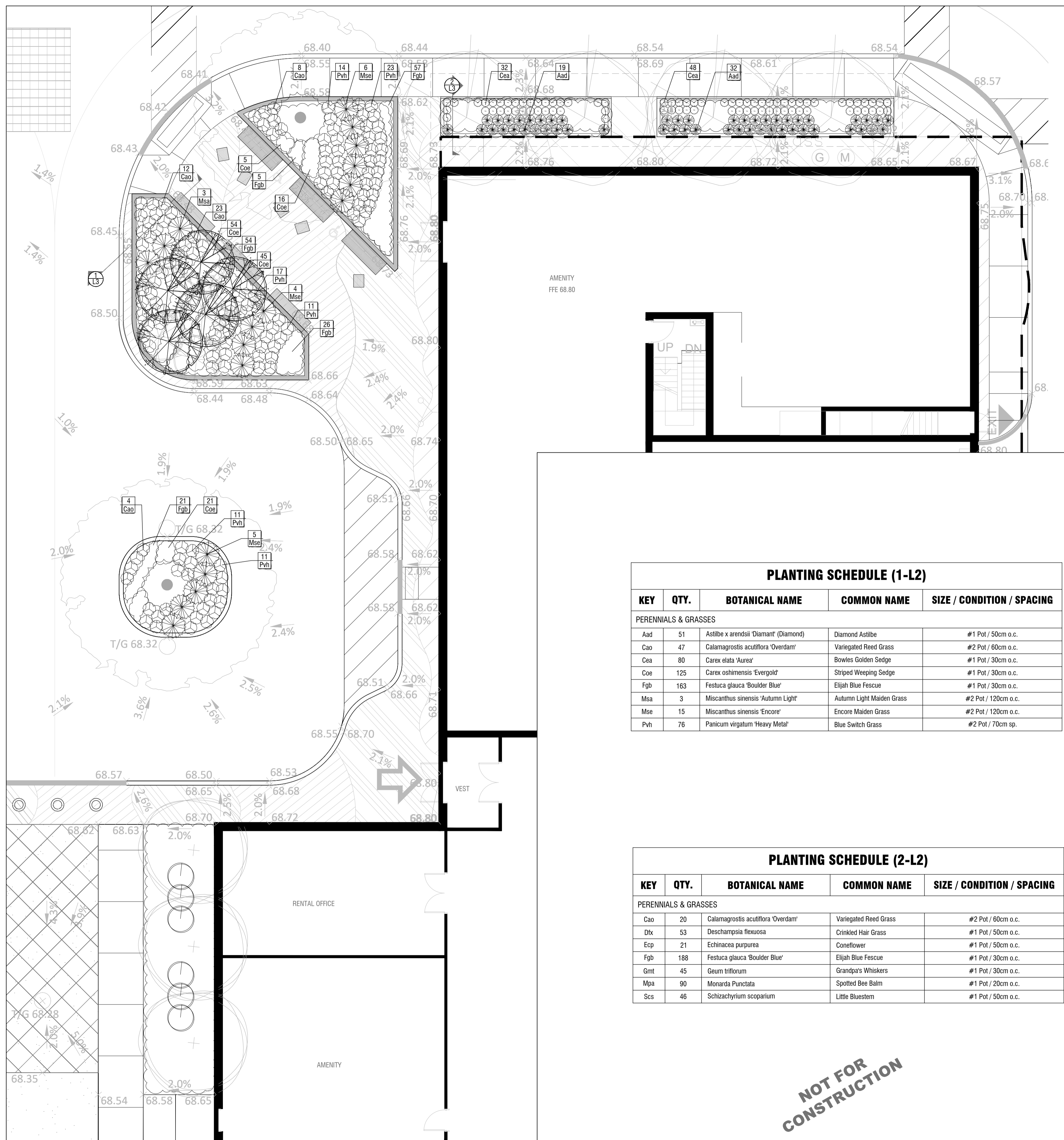
project / projet  
**500 COVENTRY ROAD**  
 (LOT 1, REGISTERED PLAN 747, CITY OF OTTAWA)

drawing / dessin  
**LANDSCAPE & TREE PLANTING PLAN**

designed / conçu **DF / SP** drawn / dessiné **SP / DF** reviewed / examiné **ST / DF**  
 date **Dec 2023** project number / No. du projet

drawing number / No. du dessin

**L2**



**PLANTING SCHEDULE (1-L2)**

KEY	QTY.	BOTANICAL NAME	COMMON NAME	SIZE / CONDITION / SPACING
PERENNIALS & GRASSES				
Aad	51	<i>Astilbe x arendsii</i> 'Diamond'	Diamond Astilbe	#1 Pot / 50cm o.c.
Cao	47	<i>Calamagrostis acutiflora</i> 'Overdam'	Variegated Reed Grass	#2 Pot / 60cm o.c.
Cea	80	<i>Carex elata</i> 'Aurea'	Bowles Golden Sedge	#1 Pot / 30cm o.c.
Coe	125	<i>Carex oshimensis</i> 'Evergold'	Striped Weeping Sedge	#1 Pot / 30cm o.c.
Fgb	163	<i>Festuca glauca</i> 'Boulder Blue'	Elijah Blue Fescue	#1 Pot / 30cm o.c.
Msa	3	<i>Miscanthus sinensis</i> 'Autumn Light'	Autumn Light Maiden Grass	#2 Pot / 120cm o.c.
Mse	15	<i>Miscanthus sinensis</i> 'Encore'	Encore Maiden Grass	#2 Pot / 120cm o.c.
Pvh	76	<i>Panicum virgatum</i> 'Heavy Metal'	Blue Switch Grass	#2 Pot / 70cm sp.

**PLANTING SCHEDULE (2-L2)**

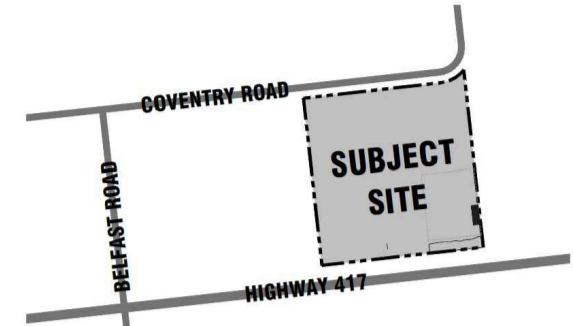
KEY	QTY.	BOTANICAL NAME	COMMON NAME	SIZE / CONDITION / SPACING
PERENNIALS & GRASSES				
Cao	20	<i>Calamagrostis acutiflora</i> 'Overdam'	Variegated Reed Grass	#2 Pot / 60cm o.c.
Dfx	53	<i>Deschampsia flexuosa</i>	Crinkled Hair Grass	#1 Pot / 50cm o.c.
Ecp	21	<i>Echinacea purpurea</i>	Coneflower	#1 Pot / 50cm o.c.
Fgb	188	<i>Festuca glauca</i> 'Boulder Blue'	Elijah Blue Fescue	#1 Pot / 30cm o.c.
Gmt	45	<i>Geum triflorum</i>	Grandpa's Whiskers	#1 Pot / 30cm o.c.
Mpa	90	<i>Monarda punctata</i>	Spotted Bee Balm	#1 Pot / 20cm o.c.
Scs	46	<i>Schizachyrium scoparium</i>	Little Bluestem	#1 Pot / 50cm o.c.

**NOT FOR CONSTRUCTION**

**1** PLANTING PLAN  
**L2** 1:100

**2** RAISED PLANTERS PLAN  
**L2** 1:150





APPROXIMATE SCOPE OF WORK

EXISTING TREES AND HEDGEROW TREE-LINE AS SURVEYED - REFER TREE CONSERVATION PLANS FOR SPECIES AND HEALTH ASSESSMENTS

EXISTING TREES NOT PICKED UP IN SURVEY

CRITICAL ROOTING ZONE (CRZ) IDENTIFIED - REFER TO TABLE # FOR RADIUS OF CRZ

APPROXIMATE CANOPY AT 40 YEARS

PROPOSED TREE

EXTENT OF GROWING MEDIUM - REFER TO CALLOUTS FOR DEPTH

**PROPOSED TREE CANOPY PROJECTIONS (40 YEAR) & SOIL VOLUME REQUIREMENTS**

CANOPY PROJECTIONS (NTS)	AVERAGE CROWN AREA PER TREE (m <sup>2</sup> )	QTY OF TREES	TOTAL TREE CANOPY COVERAGES	SOIL VOLUME REQUIREMENT*	CONTINUOUS SPACE SOIL VOLUME (i.e. 2 TREES/1 GREENSPACE)
DWARF ORNAMENTAL DECIDUOUS TREE (AVG. CANOPY DIAMETER = 2.5m)	6m <sup>2</sup>	0	0m <sup>2</sup>	10m <sup>3</sup>	8m <sup>3</sup> /tree
COLUMNAR DECIDUOUS TREE (AVG. CANOPY DIAMETER = 3.5m)	10m <sup>2</sup>	5	50m <sup>2</sup>	15m <sup>3</sup>	9m <sup>3</sup> /tree
SMALL DECIDUOUS TREE (AVG. CANOPY DIAMETER = 4.5m)	16m <sup>2</sup>	5	80m <sup>2</sup>	20m <sup>3</sup>	12m <sup>3</sup> /tree
MEDIUM DECIDUOUS TREE (AVG. CANOPY DIAMETER = 8.5m)	57m <sup>2</sup>	8	456m <sup>2</sup>	25m <sup>3</sup>	15m <sup>3</sup> /tree
LARGE DECIDUOUS TREE (AVG. CANOPY DIAMETER = 16m)	201m <sup>2</sup>	13	2,613m <sup>2</sup>	30m <sup>3</sup>	18m <sup>3</sup> /tree
LARGE CONIFEROUS TREE (AVG. CANOPY DIAMETER = 6m)	6.5m <sup>2</sup>	3	19.5m <sup>2</sup>	25m <sup>3</sup>	30m <sup>3</sup>

**CANOPY CALCULATIONS**

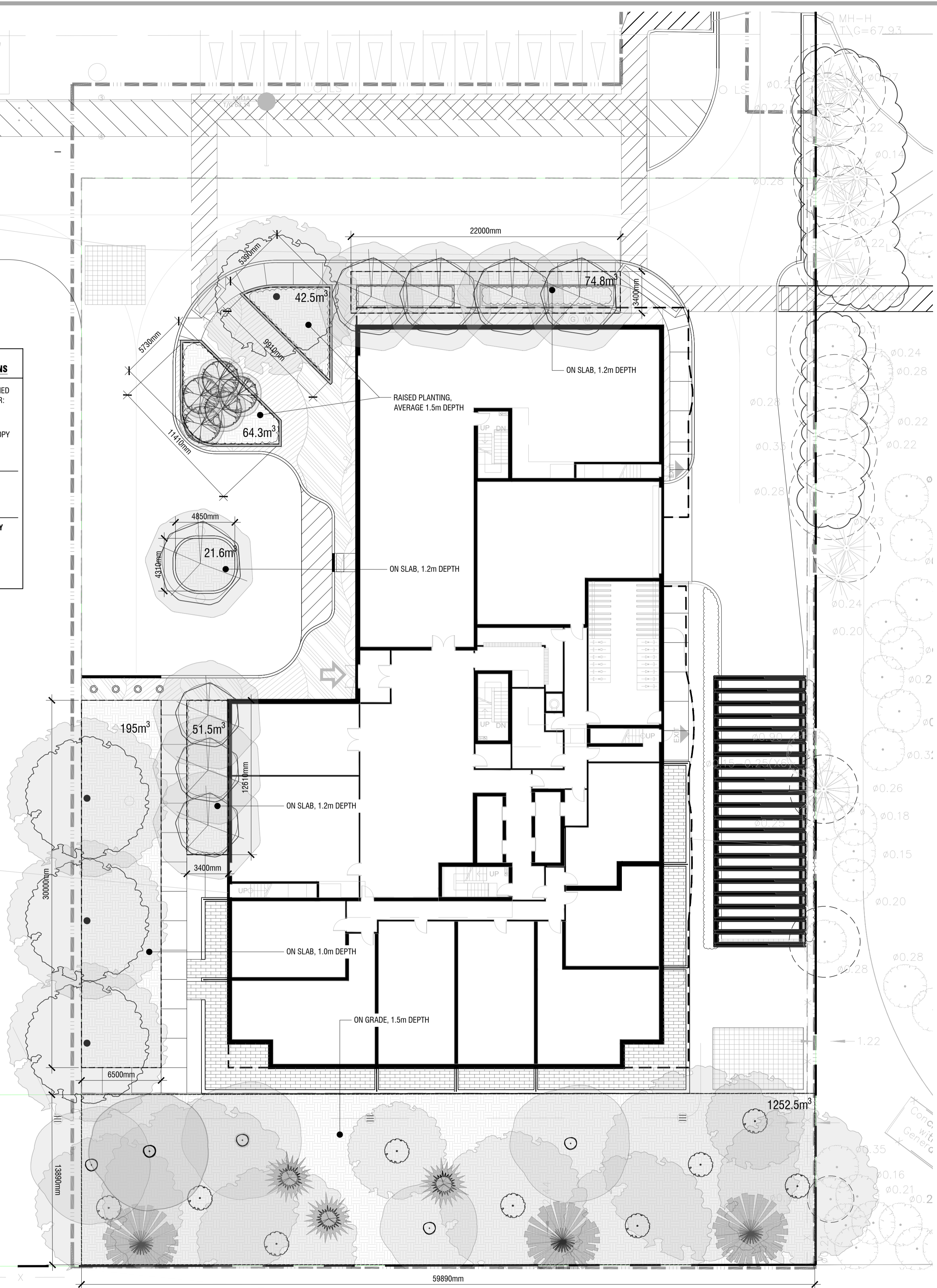
EXISTING RETAINED CANOPY COVER: 0m<sup>2</sup>

PROPOSED CANOPY COVER: 3219m<sup>2</sup>

SITE SIZE: 4430m<sup>2</sup>

**TOTAL CANOPY COVERAGE**  
3219m<sup>2</sup>  
**73%**

- NOTES:**
- CALCULATIONS HAVE BEEN MADE TO PROJECT A 40 YEAR HORIZON AND TYPICAL GROWTH RATES FOR ALL TREES
  - PROJECTED CANOPY DIAMETERS AND AREAS ARE BASED ON AN AVERAGE OF THE TREES PROPOSED FOR THE SITE
  - PROJECTED CANOPY AREAS FOR EXISTING TREES ARE BASED ON AVERAGE OF THE TREES PLANTED AS PART OF PREVIOUS PHASES
  - OVERLAPPING CANOPIES AREAS FOR EXISTING TREES ARE ONLY COUNTED ONCE WHERE APPLICABLE
  - CANOPY CALCULATION DOES NOT ACCOUNT FOR EXISTING TREE CANOPY ON ADJACENT SITES/IN ROW OVERLAPPING SITE
  - \*SOIL VOLUME REQUIREMENT IS BASED ON THE CITY OF OTTAWA'S 'Tree Planting in Sensitive Marine Clay Soils - 2017 Guidelines' DRAFT Version 2.0 DATED JANUARY 11, 2019 WHICH CALCULATES SOIL VOLUME USING A DEPTH OF 1.5m, OR AS NOTED OTHERWISE WHERE THIS DEPTH IS NOT ACHIEVABLE.



**NOT FOR CONSTRUCTION**

rev'n	description / la description	yyyy/mm/dd
05	Issue for submission	2026/01/16
04	Issue for coordination	2026/01/07
03	Issue for coordination	2025/12/19
02	Updated per City comments	2025/03/12
01	Issue for submission	2024/11/14
00	Issue for Phase 2 Pre-Consultation	2023/12/22

**FOTENN + Design**  
420 O'Connor Street  
Ottawa, ON, CANADA K2P 1W4  
613.730.5709  
fotenn.com

north / le nord

stamp / le cachet

project / projet  
**500 COVENTRY ROAD**  
(LOT 1, REGISTERED PLAN 747, CITY OF OTTAWA)

drawing / dessin  
**40 YEAR CANOPY COVERAGE PROJECTIONS & SOIL VOLUME**

designed / conçu	drawn / dessiné	reviewed / examiné
<b>DF / SP</b>	<b>SP / DF</b>	<b>ST / DF</b>
date	project number / No. du projet	
<b>Dec 2023</b>		

drawing number / No. du dessin

**1 40 YEAR PROJECTED CANOPY COVERAGE & SOIL VOLUME PLAN**  
**L4 1:200**

**L4**