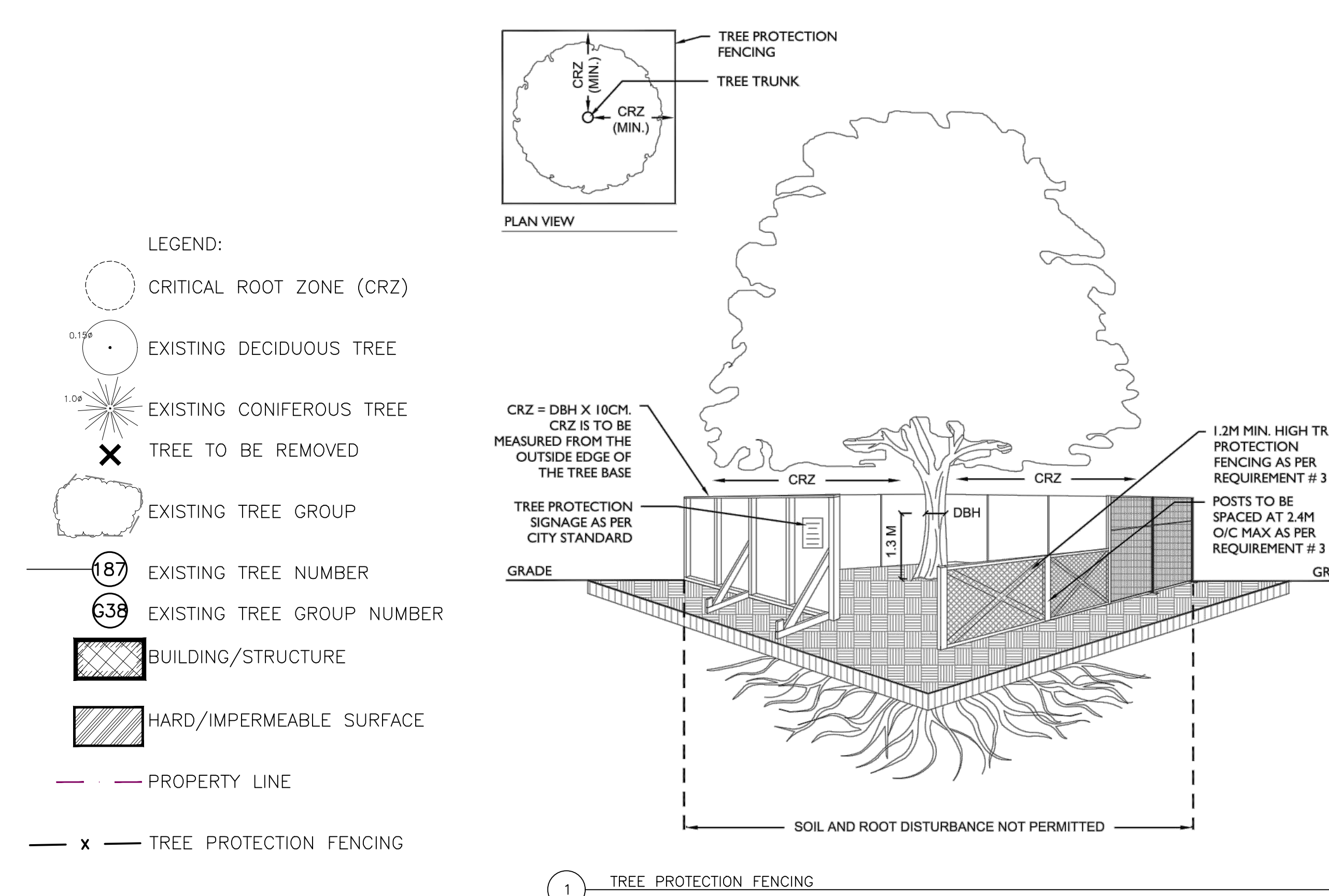
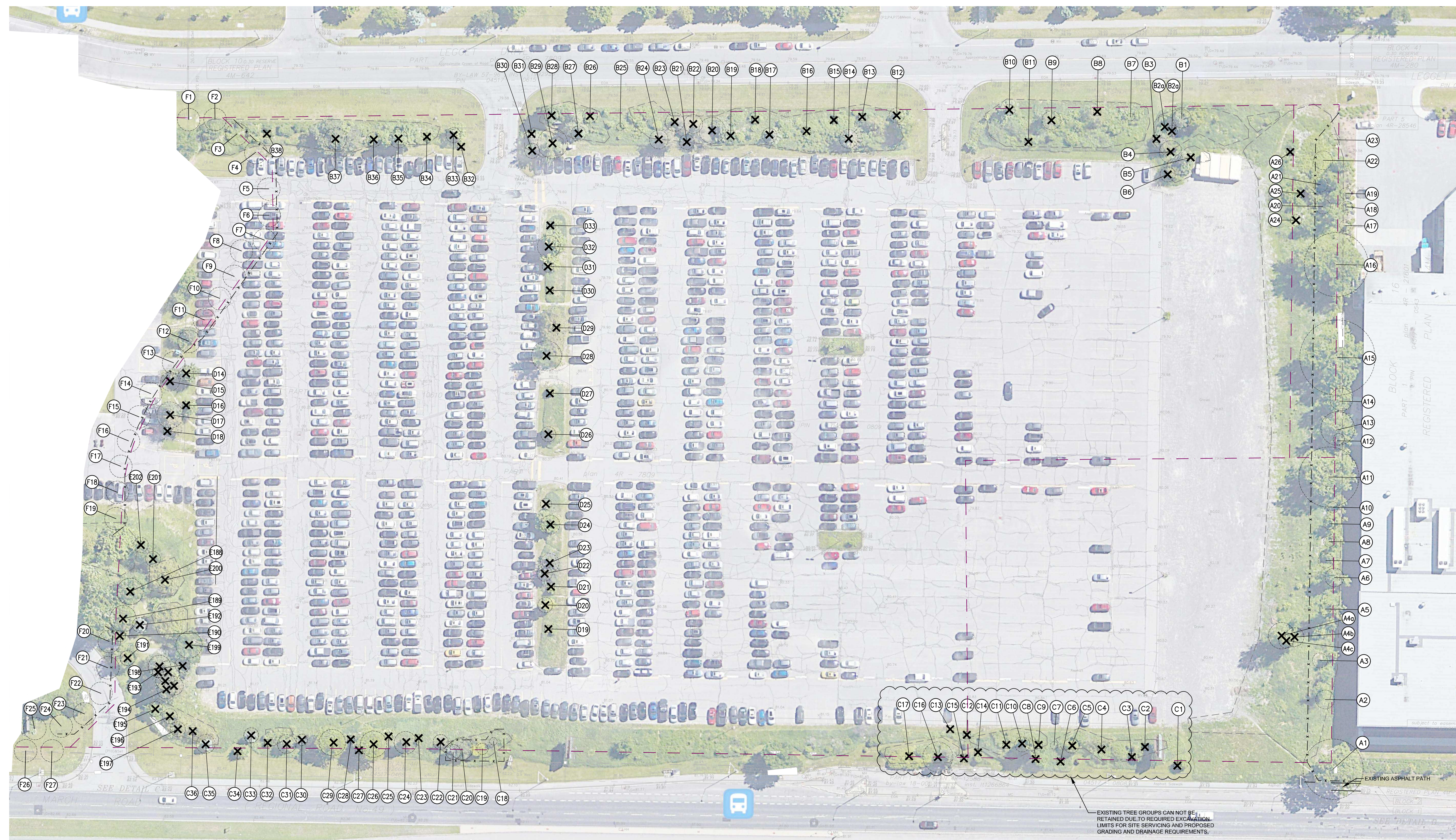


Date	Description
11-12-23	ISSUED FOR REVIEW / CO-ORDINATION
05-09-24	ISSUED FOR SPA
01-11-24	RE-ISSUED FOR SPA
31-01-25	RE-ISSUED FOR SPA



**TREE PROTECTION REQUIREMENTS:**

- PRIOR TO ANY WORK ACTIVITY WITHIN THE CRITICAL ROOT ZONE (CRZ = 10 X DIAMETER OF A TREE, TREE PROTECTION FENCING MUST BE INSTALLED SURROUNDING THE CRITICAL ROOT ZONE, AND REMAIN IN PLACE UNTIL THE WORK IS COMPLETE.
- UNLESS PLANS ARE APPROVED BY CITY FORESTRY STAFF, FOR WORK WITHIN THE CRZ:
  - DO NOT PLACE ANY MATERIAL OR EQUIPMENT - INCLUDING OUTHOUSES;
  - DO NOT ATTACH ANY SIGNS, NOTICES OR POSTERS TO ANY TREE;
  - DO NOT RAISE OR LOWER THE EXISTING GRADE;
  - TUNNEL OR BORE WHEN DIGGING;
  - DO NOT DAMAGE THE ROOT SYSTEM, TRUNK, OR BRANCHES OR ANY TREE;
  - ENSURE THAT EXHAUST FUMES FROM ALL EQUIPMENT ARE NOT DIRECTED TOWARD ANY TREE CANOPY;
  - DO NOT EXTEND HARD SURFACE OR SIGNIFICANTLY CHANGE LANDSCAPING.
- TREE PROTECTION FENCING MUST BE AT LEAST 1.2M IN HEIGHT, AND CONSTRUCTED OF RIGID OR FRAMED MATERIALS (E.G. MODULOC - STEEL, PLYWOOD HOARDING, OR SNOW FENCE ON A 2"x4" WOOD FRAME) WITH POSTS 2.4M APART, SUCH THAT THE FENCE LOCATION CANNOT BE ALTERED. ALL SUPPORTS AND BRACING MUST BE PLACED OUTSIDE OF THE CRZ, AND INSTALLATION MUST MINIMISE DAMAGE TO EXISTING ROOTS. (SEE DETAIL)
- THE LOCATION OF THE TREE PROTECTION FENCING MUST BE DETERMINED BY AN ARBORIST AND DETAILED ON ANY ASSOCIATED PLANS FOR THE SITE (E.G. TREE CONSERVATION REPORT, TREE INFORMATION REPORT, ETC.). THE PLAN AND CONSTRUCTED FENCING MUST BE APPROVED BY CITY FORESTRY STAFF PRIOR TO THE COMMENCEMENT OF WORK.
- IF THE FENCED TREE PROTECTION AREA MUST BE REDUCED TO FACILITATE CONSTRUCTION, MITIGATION MEASURES MUST BE PRESCRIBED BY AN ARBORIST AND APPROVED BY CITY FORESTRY STAFF. THESE MAY INCLUDE THE PLACEMENT OF PLYWOOD, WOOD CHIPS, OR STEEL PLATING OVER THE ROOTS FOR PROTECTION OR THE PROPER PRUNING AND CARE OF ROOTS WHERE ENCOUNTERED.

THE CITY'S TREE PROTECTION BY-LAW, 2020-340 PROTECTS BOTH CITY-OWNED TREES, CITY-WIDE, AND PRIVATELY OWNED TREES WITHIN THE URBAN AREA. PLEASE REFER TO WWW.OTTAWA.CA/TREELAW FOR MORE INFORMATION ON HOW THE TREE BY-LAW APPLIES.

**NOTES:**

- NOT ALL TREE LOCATIONS WERE SHOWN ON THE TOPOGRAPHICAL SURVEY, THEREFOR THE LOCATIONS OF SOME VEGETATION ARE APPROXIMATE AND BASED ON AERIAL PHOTOS AND SITE OBSERVATION.
- VEGETATION NUMBERING MAY REFER TO INDIVIDUAL TREES, LARGE GROUPS OF SHRUBS, OR GROUPS OF TREES GROWING IN A DENSE STAND.
- AERIAL PHOTO SOURCE: GOOGLE-EARTH 2018
- REFER TO LANDSCAPE DRAWINGS FOR PROPOSED TREE PLANTING LOCATIONS AND SPECIES.

**EXISTING CONDITION:**

THE SUBJECT SITE COMPRISES 4.49 HA OF LAND BOUNDED BY MARCH ROAD, TERRY FOX DRIVE AND LEGGET DRIVE. THE SOUTH BOUNDARY OF THE SUBJECT SITE IS IRREGULAR AND APPROXIMATELY 50 M SOUTH OF THE OFFICE BUILDING. THE SUBJECT SITE IS CURRENTLY OCCUPIED BY A LARGE SURFACE PARKING THAT WAS BEING USED BY THE OFFICE BUILDING TO THE NORTH.

THE EXISTING SITE CONSISTS PRIMARILY OF HARD SURFACING (ASPHALT PARKING LOT) WITH PERIMETER TREE AND SHRUB PLANTING AND A LINE OF TREE PLANTING DIVIDING THE EXPANSE OF THE SITE.

THE EXISTING TREE COVER CONSISTS OF A MIX OF CONIFEROUS AND DECIDUOUS TREES PLANTED APPROXIMATELY 25 YEARS AGO WHEN THE EXISTING PARKING LOT WAS EXPANDED. THERE WAS A HIGH PERCENTAGE OF WHITE ASH INCLUDED IN THE PLANTING WHICH HAVE SINCE DIED OR ARE IN POOR CONDITION, LIKELY DUE TO EMERALD ASH BORER BEETLE. AREAS OF SHRUB PLANTING EXIST AROUND THE PERIMETER OF THE PARKING WHICH INCLUDED A MIX OF NATIVE SHRUBS SUCH AS HONEYSUCKLE AND SUMAC, HOWEVER, MANY PLANTING BEDS HAVE BECOME OVERGROWN WITH IVY AND INVASIVE SPECIES SUCH AS MANITOBA MAPLE AND BUCKTHORN HAVE ENCLOSED.

THE LINE OF TREES TO THE SOUTH OF THE SITE INCLUDES A NUMBER OF MATURE BURR OAK TREES AND WHITE SPRUCE IN GOOD CONDITION AND IS A PRIORITY AREA TO BE CONSERVED.

THE SITE IS NOT DESIGNATED AS PRIMARY, SUPPORTING OR CONTRIBUTING LANDS ON THE CITY OF OTTAWA'S GREENSPACE MASTER PLAN.

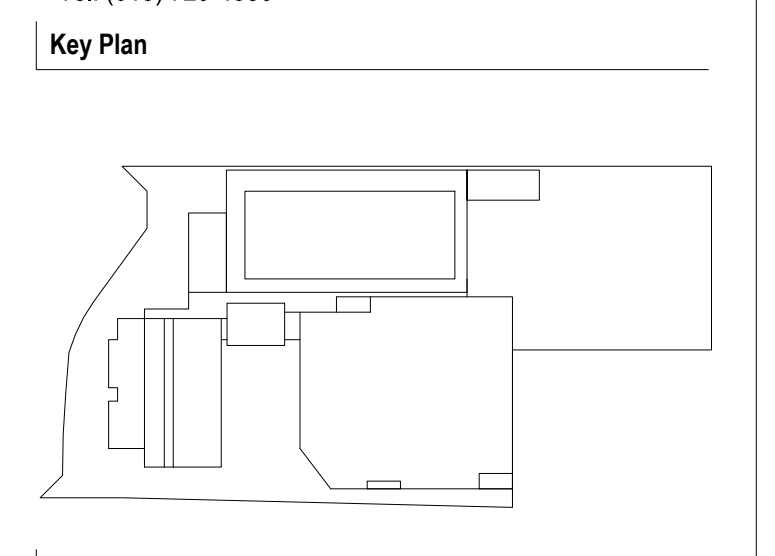
THE SITE SITS WITHIN A DESIGN PRIORITY AREA FOR KANATA NORTH ECONOMIC DISTRICT. THE LEGAL DESCRIPTION OF THE SUBJECT SITE IS: PARTS 5, 7 AND 8 ON 4R-35453



Landscape Architecture  
 Urban Design  
 Site Planning  
 Recreation and Park Planning  
 Project Management

**C S W**

319 McRae Avenue, Suite 502, Ottawa, Ontario, K1Z 0B9  
 Tel: (613) 729-4536



Seal / Signature

**NOT FOR CONSTRUCTION**

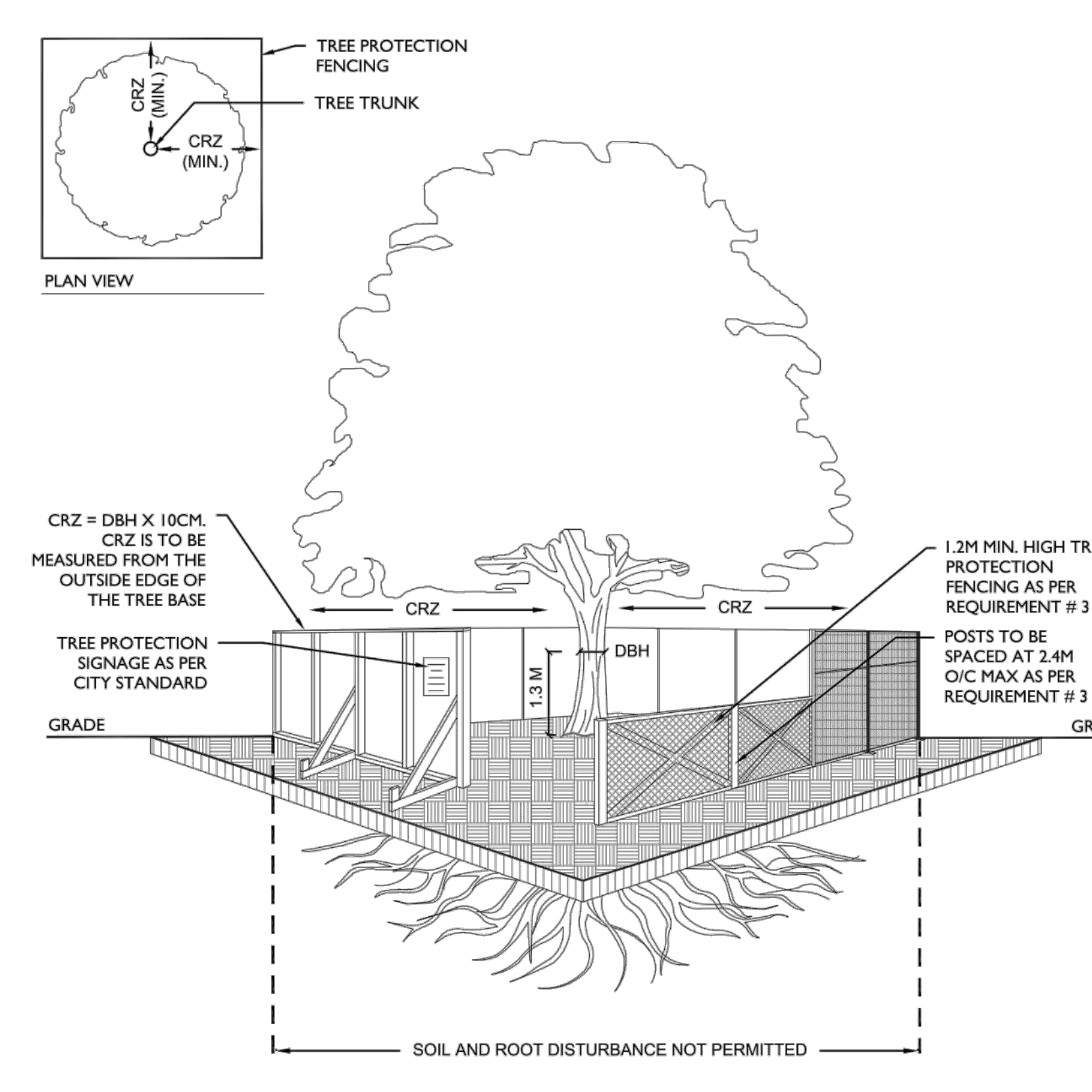
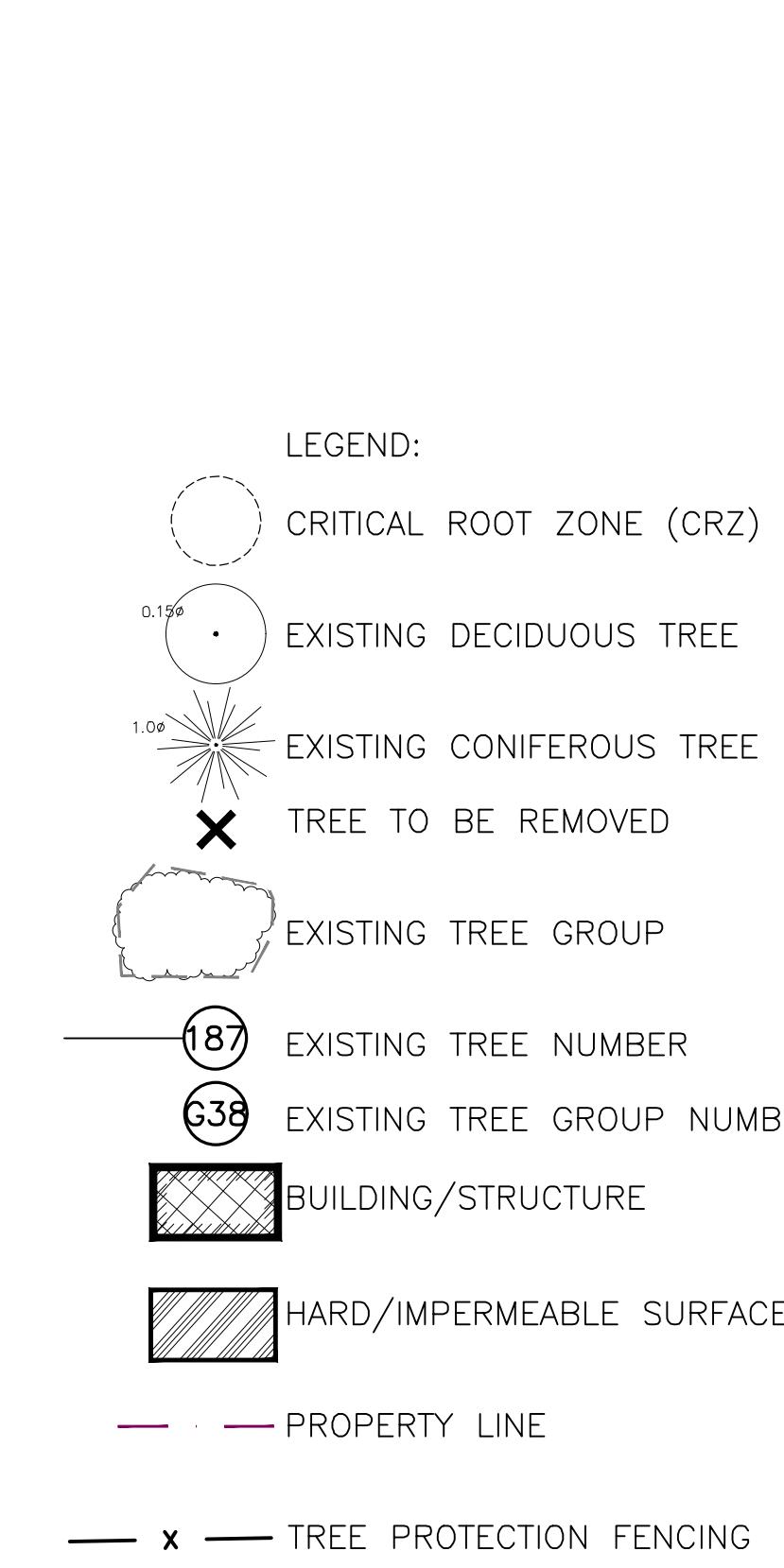
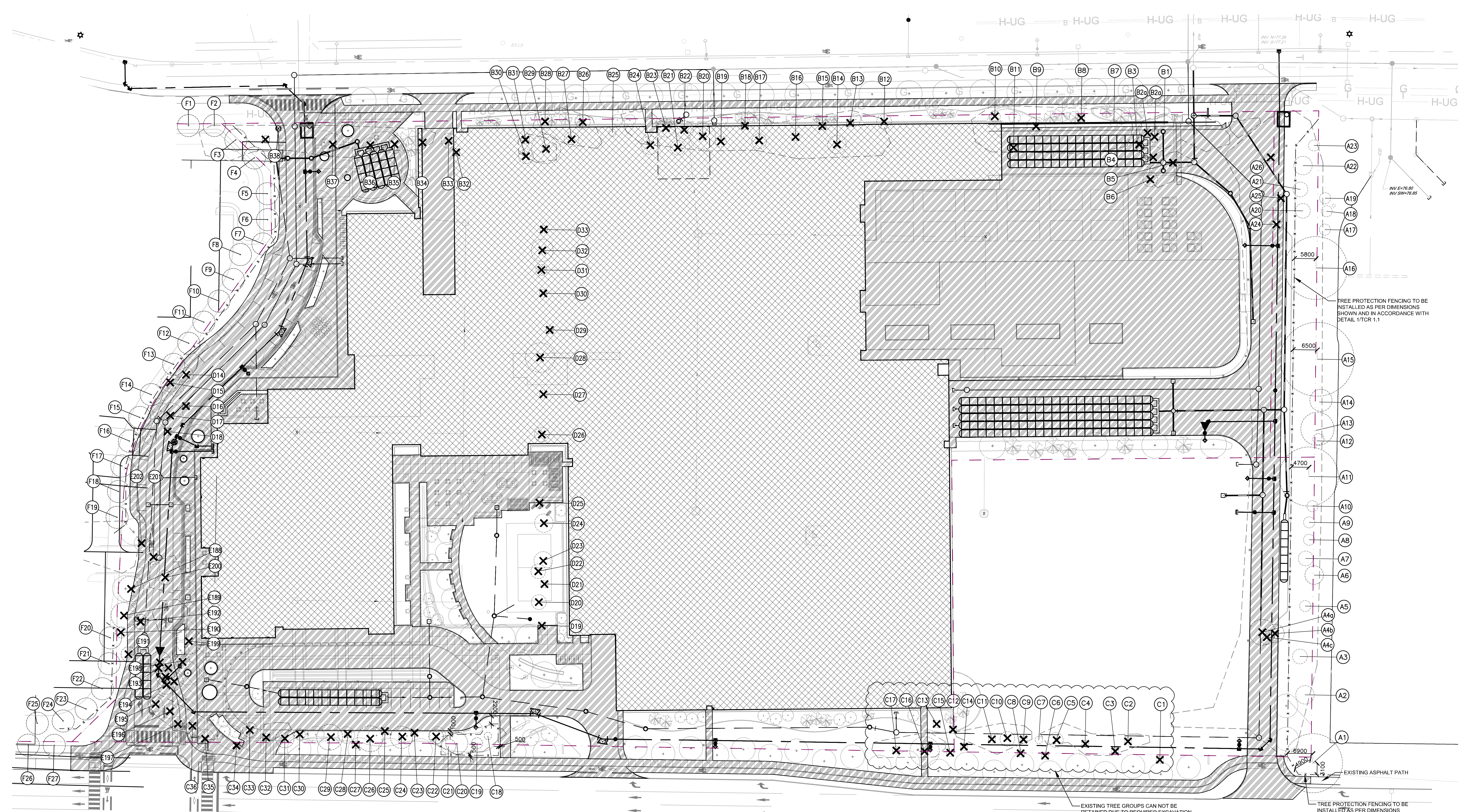
Project Name: Nokia Ottawa Campus  
 Project Number: 027.7946.000 (CSW PROJ. NO. 2113-02)  
 Description: TREE CONSERVATION REPORT EXISTING CONDITION SHEET 1 OF 3  
 Scale: 1:400

**TCR 1.0**

© 2021 Gensler #19202

D07-12-24-0149

Date	Description
11-12-23	ISSUED FOR REVIEW / CO-ORDINATION
05-09-24	ISSUED FOR SPA
01-11-24	RE-ISSUED FOR SPA
31-01-25	RE-ISSUED FOR SPA



**TREE PROTECTION REQUIREMENTS:**

- PRIOR TO ANY WORK ACTIVITY WITHIN THE CRITICAL ROOT ZONE (CRZ = 10 X DIAMETER) OF A TREE, TREE PROTECTION FENCING MUST BE INSTALLED SURROUNDING THE CRITICAL ROOT ZONE, AND REMAIN IN PLACE UNTIL THE WORK IS COMPLETE.
- UNLESS PLANS ARE APPROVED BY CITY FORESTRY STAFF, FOR WORK WITHIN THE CRZ:
  - DO NOT PLACE ANY MATERIAL OR EQUIPMENT - INCLUDING OUTHOUSES;
  - DO NOT ATTACH ANY SIGNS, NOTICES OR POSTERS TO ANY TREE;
  - DO NOT RAISE OR LOWER THE EXISTING GRADE;
  - TUNNEL OR BORE WHEN DIGGING;
  - DO NOT DAMAGE THE ROOT SYSTEM, TRUNK, OR BRANCHES OF ANY TREE;
  - ENSURE THAT EXHAUST FUMES FROM ALL EQUIPMENT ARE NOT DIRECTED TOWARD ANY TREE CANOPY;
  - DO NOT EXTEND HARD SURFACE OR SIGNIFICANTLY CHANGE LANDSCAPING.
- TREE PROTECTION FENCING MUST BE AT LEAST 1.2M IN HEIGHT, AND CONSTRUCTED OF RIGID OR FRAMED MATERIALS (E.G. MODULOC - STEEL, PLYWOOD HOARDING, OR SNOW FENCE ON A 2"x4" WOOD FRAME) WITH POSTS 2.4M APART, SUCH THAT THE FENCE LOCATION CANNOT BE ALTERED. ALL SUPPORTS AND BRACING MUST BE PLACED OUTSIDE OF THE CRZ, AND INSTALLATION MUST MINIMIZE DAMAGE TO EXISTING ROOTS. (SEE DETAIL).
- THE LOCATION OF THE TREE PROTECTION FENCING MUST BE DETERMINED BY AN ARBORIST AND DETAILED ON ANY ASSOCIATED PLANS FOR THE SITE (E.G. TREE CONSERVATION REPORT, TREE INFORMATION REPORT, ETC). THE PLAN AND CONSTRUCTED FENCING MUST BE APPROVED BY CITY FORESTRY STAFF PRIOR TO THE COMMENCEMENT OF WORK.
- IF THE FENCED TREE PROTECTION AREA MUST BE REDUCED TO FACILITATE CONSTRUCTION, MITIGATION MEASURES MUST BE PRESCRIBED BY AN ARBORIST AND APPROVED BY CITY FORESTRY STAFF. THESE MAY INCLUDE THE PLACEMENT OF PLYWOOD, WOOD CHIPS, OR STEEL PLATING OVER THE ROOTS FOR PROTECTION OR THE PROPER PRUNING AND CARE OF ROOTS WHERE ENCOUNTERED.

THE CITY'S TREE PROTECTION BY-LAW, 2020-340 PROTECTS BOTH CITY-OWNED TREES, CITY-WIDE, AND PRIVATELY OWNED TREES WITHIN THE URBAN AREA. PLEASE REFER TO WWW.OTTAWA.CA/TREELAW FOR MORE INFORMATION ON HOW THE TREE BY-LAW APPLIES.

**ADDITIONAL NOTES:**

- WHERE TREE PROTECTION MEASURES MUST BE REDUCED WITHIN THE CRZ OF A TREE AND ROOTS ARE ENCOUNTERED DURING EXCAVATION, APPROPRIATE MITIGATION MEASURES SHOULD BE FOLLOWED AS PER THE CONSTRUCTION SPECIFICATIONS. THESE MEASURES MAY INCLUDE BUT ARE NOT LIMITED TO THE FOLLOWING:
  - ALL ROOT SYSTEMS SHALL BE EXPOSED AND BACKFILLED IN ONE CONTINUOUS OPERATION WHEREVER POSSIBLE TO MINIMIZE DESICCATION OF THE ROOT SYSTEM.
  - ANY DAMAGED ROOTS, OR ROOTS REQUIRED TO BE REMOVED FOR CONSTRUCTION PURPOSES SHALL BE PRUNED BY A QUALIFIED ARBORIST OR OTHER TREE PROFESSIONAL. ALL PRUNING OF TREE ROOTS TO BE IN ACCORDANCE WITH GOOD ARBORICULTURAL PRACTICES.
  - WET FILTER CLOTH SHALL BE USED TO TEMPORARILY COVER AND PROTECT THE EXPOSED TREE ROOTS. FILTER CLOTH SHALL BE INSTALLED IMMEDIATELY FOLLOWING ROOT EXPOSURE AND SHALL BE HELD IN PLACE WITH APPROVED PINS OR SPIKES UNTIL BACKFILLING TAKES PLACE.
  - EXPOSED ROOTS SHALL BE KEPT CONTINUOUSLY MOIST DURING EXCAVATION.
- NOT ALL TREE LOCATIONS WERE SHOWN ON THE TOPOGRAPHICAL SURVEY, THEREFORE THE LOCATIONS OF SOME VEGETATION ARE APPROXIMATE AND BASED ON AERIAL PHOTOS AND SITE OBSERVATION.
- VEGETATION NUMBERING MAY REFER TO INDIVIDUAL TREES, LARGE GROUPS OF SHRUBS, OR GROUPS OF TREES GROWING IN A DENSE STAND.
- AERIAL PHOTO SOURCE: GOOGLE-EARTH 2018.
- REFER TO LANDSCAPE DRAWINGS FOR PROPOSED TREE PLANTING LOCATIONS AND SPECIES.

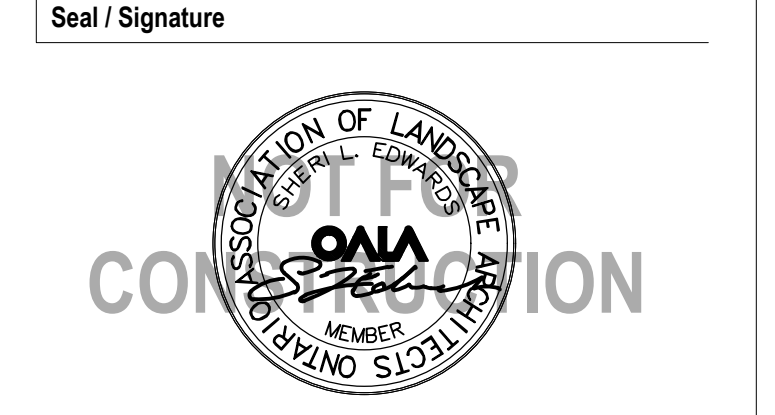
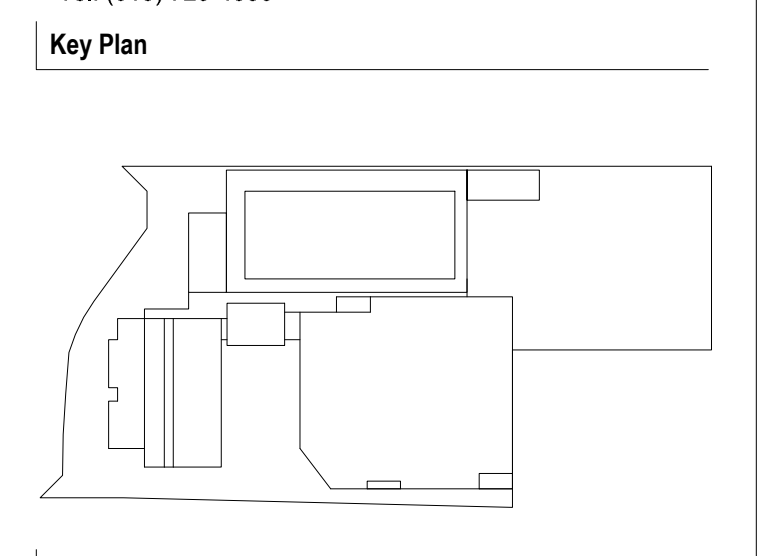
EXISTING TREE GROUPS CAN NOT BE RETAINED DUE TO REQUIRED EXCAVATION LIMITS FOR SITE SERVICING AND PROPOSED GRADING AND DRAINAGE REQUIREMENTS.

TREE PROTECTION FENCING TO BE INSTALLED AS PER DIMENSIONS SHOWN AND IN ACCORDANCE WITH DETAIL 17CR 1.1

Landscape Architecture  
 Urban Design  
 Site Planning  
 Recreation and Park Planning  
 Project Management

**C S W**

319 McRae Avenue, Suite 502, Ottawa, Ontario, K1Z 0B9  
 Tel: (613) 729-4536



Project Name: **Nokia Ottawa Campus**

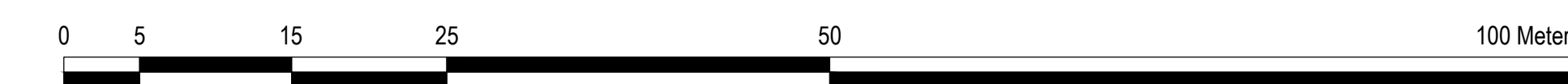
Project Number: **027.7946.000** (CSW PROJ. NO. 2013-02)

Description: **TREE CONSERVATION REPORT PROPOSED DEVELOPMENT SHEET 2 OF 3**

Scale: **1:400**

**TCR 1.1**

© 2021 Gensler #19202



Scale: 1:30

D07-12-24-0149

# NOKIA Ottawa Campus

570 March Rd., Kanata/Ottawa ON K2K 2T6

BLOCK 6 AND PART OF BLOCK 1 REGISTERED PLAN 486-442 AND PART OF LOTS 8 AND 9 CONCESSION 4

## Gensler

5005 Greenville Ave Dallas TX 75206 Tel 214 273 1500

Services: Aris, OSullivan, Yobek & Ltd Planning Consultant  
 Novicki G. Haines@novicki-eng.com  
 Novicki F. Haines@novicki-eng.com  
 Architectural Site Planning: Barry, J.M.D@gensler.com  
 Electrical Engineering: Anis, D.S@anshieldanderson.com  
 Mechanical Engineering: Elna, J.G@anshieldanderson.com  
 Geotechnical Engineering: J.G. Janssen@anshieldanderson.com  
 Landscape Planning: C.S.W. Csw@gensler.com  
 Structural Engineering: Janssen@gensler.com  
 Transportation Planning: Janssen@gensler.com

Date	Description
11-12-23	ISSUED FOR REVIEW / CO-ORDINATION
05-09-24	ISSUED FOR SPA
01-11-24	RE-ISSUED FOR SPA
31-01-25	RE-ISSUED FOR SPA

Area/ Number	Botanical Name	Common Name	DBH	Ownership	Condition	Arborist notes	Arborist Recommendation	Removal Reason
<b>A - Parking South</b>								
1	Quercus macrocarpa	Burr Oak	80	CITY	Good	some dead limbs	REMOVE / REMAIN	CONSTRUCTION CONFLICT/ Hazard!
2	Ulmus americana	American Elm	25	PRIVATE	Good	healthy - form is scrubby	REMAIN	
3	Quercus macrocarpa	Burr Oak	20	PRIVATE	Moderate	spare foliage, irregular form	REMAIN	
4a	Populus tremuloides	Trembling Aspen	35	PRIVATE	Good	crowded	REMOVE	CONSTRUCTION CONFLICT
4b	Populus tremuloides	Trembling Aspen	25	PRIVATE	Good	crowded	REMOVE	CONSTRUCTION CONFLICT
4c	Ulmus americana	American Elm	20	PRIVATE	Good	crowded	REMOVE	CONSTRUCTION CONFLICT
5	Group: Fraxinus sp. Ulmus americana	Group: Ash species American Elm Burr Oak	10-15	PRIVATE	Moderate/Good	crowded	REMAIN	
6	Quercus macrocarpa	Burr Oak	25	BOUNDARY	Good	crowded	REMAIN	
7	Quercus macrocarpa	Burr Oak	20	PRIVATE	Good	crowded	REMAIN	
8	Quercus macrocarpa	Burr Oak	10-15	PRIVATE	Moderate	crowded	REMAIN	
9	Quercus macrocarpa	Burr Oak	10-15	PRIVATE	Moderate	crowded	REMAIN	
10	Quercus macrocarpa	Burr Oak	10-15	BOUNDARY	Good	crowded	REMAIN	
11	Quercus macrocarpa	Burr Oak	80	PRIVATE	Good	crowded	REMAIN	
12	Quercus macrocarpa	Burr Oak	15	ADJACENT	Good	crowded	REMAIN	
13	Quercus macrocarpa	Burr Oak	45	ADJACENT	Good	crowded	REMAIN	
14	Quercus macrocarpa	Burr Oak	30	ADJACENT	Good	crowded	REMAIN	
15	Quercus macrocarpa	Burr Oak	100	BOUNDARY	Good	crowded	REMAIN	
16	Quercus macrocarpa	Burr Oak	M52 B5	BOUNDARY	Good	Union strong	REMAIN	
17	Pinus strobus	White Spruce	10-15	ADJACENT	Good	crowded	REMAIN	
18	Pinus strobus	White Spruce	10-15	ADJACENT	Good	crowded	REMAIN	
19	Pinus strobus	White Spruce	10-15	ADJACENT	Moderate	crowded	REMAIN	
20	Quercus macrocarpa	Burr Oak	20	PRIVATE	Good	crowded	REMAIN	
21	Quercus macrocarpa	Burr Oak	20	PRIVATE	Good	crowded	REMAIN	
22	Quercus macrocarpa	Burr Oak	25	PRIVATE	Good	crowded	REMAIN	
23	Quercus macrocarpa	Burr Oak	15	PRIVATE	Good	crowded	REMAIN	
24	Quercus macrocarpa	Burr Oak	15	PRIVATE	Good	crowded	REMOVE	CONSTRUCTION CONFLICT
25	Quercus macrocarpa	Burr Oak	<10	PRIVATE	Poor	crowded	REMOVE	CONSTRUCTION CONFLICT
26	Group: Fraxinus sp. Ulmus americana	Group: Ash species American Elm Buckhorn Elm	n/a	PRIVATE	Poor	dense growth of small trees and shrubs with thin vine coverage	N/A	
<b>B - Parking East</b>								
1	Acer negundo	Manitoba Maple	25	PRIVATE	Good	poor form	REMOVE	CONSTRUCTION CONFLICT
2a	Pinus strobus	White Spruce	30	PRIVATE	Moderate	crowded	REMOVE	CONSTRUCTION CONFLICT
2b	Pinus strobus	White Spruce	15	PRIVATE	Moderate	asymmetrical form	REMOVE	CONSTRUCTION CONFLICT
3	Thuja occidentalis	Eastern White Cedar	n/a	PRIVATE	Good	mature dense	N/A	
4	Pinus strobus	White Spruce	30	PRIVATE	Good	crowded	REMOVE	CONSTRUCTION CONFLICT
5	Fraxinus sp.	Ash species	n/a	PRIVATE	N/A		N/A	
6	Thuja occidentalis	Eastern White Cedar	M53 10-20	PRIVATE	Moderate	crowded	REMOVE	CONSTRUCTION CONFLICT
7	Fraxinus sp.	Ash species	n/a	PRIVATE	N/A		N/A	
8	Thuja occidentalis	Eastern White Cedar	n/a	PRIVATE	Poor	tall mature overgrown with vines	N/A	
9	Pinus nigra	Austrian Pine	25	PRIVATE	Moderate	asymmetrical	REMOVE	CONSTRUCTION CONFLICT
10	Pinus strobus	White Spruce	15	PRIVATE	Poor	crowded	REMOVE	CONSTRUCTION CONFLICT
11	Group: Fraxinus sp. Rhamnus cathartica, Rhus typhina	Group: Ash species, Buckhorn, Staghorn Sumac, Vines	n/a	PRIVATE	Poor	crowded	N/A	
12	Acer saccharum	Sugar Maple	20	PRIVATE	Moderate-Good	possible salt stress	REMOVE	CONSTRUCTION CONFLICT
13	Thuja occidentalis	Eastern White Cedar	n/a	PRIVATE	Poor	overgrown	N/A	
14	Pinus pungens	Colorado Spruce	25	PRIVATE	Poor	topped	REMOVE	CONSTRUCTION CONFLICT
15	Pinus strobus	White Spruce	M5 10	PRIVATE	Moderate	crowded	REMOVE	CONSTRUCTION CONFLICT
16	Group: Rhamnus cathartica, Vines, Fraxinus sp.	Group: Buckhorn, Vines, Ash species	n/a	PRIVATE	Poor	dense	N/A	
17	Pinus strobus	White Spruce	20	PRIVATE	Poor	crowded	REMOVE	CONSTRUCTION CONFLICT
18	Group: Lonicera sp.	Group: Honeysuckle	n/a	PRIVATE	Moderate	dense	N/A	
19	Pinus nigra	Austrian Pine	15	PRIVATE	Good		N/A	
20	Pinus nigra	Austrian Pine	35	PRIVATE	Good		N/A	
21	Pinus nigra	Austrian Pine	20	PRIVATE	Good		N/A	
22	Pinus nigra	Austrian Pine	25	PRIVATE	Good		N/A	
23	Pinus nigra	Austrian Pine	25	PRIVATE	Good		N/A	
24	Pinus nigra	Austrian Pine	25	PRIVATE	Good		N/A	
25	Group: Fraxinus sp., Rhus typhina, Lonicera sp.	Group: Ash species, Staghorn Sumac, Vines	n/a	PRIVATE	Poor	dense group	N/A	
26	Pinus strobus	White Spruce	20	PRIVATE	Poor	spare	REMOVE	CONSTRUCTION CONFLICT
27	Pinus strobus	White Pine	20	PRIVATE	Poor	spare	REMOVE	CONSTRUCTION CONFLICT
28	Populus tremuloides	Trembling Aspen	20	PRIVATE	Good		REMOVE	CONSTRUCTION CONFLICT
29	Pinus omorika	Serbian Spruce	40	PRIVATE	Good		REMOVE	CONSTRUCTION CONFLICT
30	Pinus strobus	White Spruce	20	PRIVATE	Good		REMOVE	CONSTRUCTION CONFLICT
31	Pinus strobus	White Pine	<10	PRIVATE	Good		REMOVE	CONSTRUCTION CONFLICT
32	Fraxinus sp.	Ash species	n/a	PRIVATE	Poor	regrowth	N/A	
33	Acer rubrum	Red Maple	M52 15-20	PRIVATE	Moderate	healthy with poor form	REMOVE	CONSTRUCTION CONFLICT
34	Group: Fraxinus sp., Lonicera sp., Spruce	Group: Ash species, Honeysuckle, Lilac	n/a	PRIVATE	Poor		N/A	
35	Acer saccharum	Sugar Maple	25	PRIVATE	Good		REMOVE	CONSTRUCTION CONFLICT
36	Acer saccharum	Sugar Maple	20	PRIVATE	Moderate	crowded	REMOVE	CONSTRUCTION CONFLICT
37	Group: x6 Pinus nigra, Acer glabrum	Group: x6 Austrian Pine, 1 Elm maple	15-30	PRIVATE	Good		REMOVE	CONSTRUCTION CONFLICT
38	Group: Rhamnus cathartica, Lonicera sp., Rhus typhina, Spruce	Group: Buckhorn, Honeysuckle, Staghorn Sumac, Lilac, Ash	n/a	PRIVATE	Poor		N/A	
<b>C - Parking lot West</b>								
1	Fraxinus sp.	Ash species	n/a	CITY	n/a	removed	N/A	N/A
2	Fraxinus sp.	Ash species	n/a	PRIVATE	n/a	removed	N/A	N/A
3	Thuja occidentalis	Eastern White Cedar	n/a	PRIVATE	Good	mature	N/A	N/A
4	Group: Thuja occidentalis, green Fraxinus sp., Rhamnus cathartica	Group: Eastern White Cedar, green ash, buckhorn	n/a	PRIVATE	n/a	heavily overgrown with vines	N/A	N/A
5	Acer x freemanii	Freeman Maple	20	PRIVATE	Moderate	codominant stems with included bark	REMOVE	CONSTRUCTION CONFLICT
6	Group: Rhus typhina	Group: Staghorn Sumac	n/a	CITY	Good		REMOVE	CONSTRUCTION CONFLICT
7	Fraxinus sp.	Ash species	n/a	PRIVATE	n/a	removed	N/A	N/A
8	Fraxinus sp.	Ash species	n/a	BOUNDARY	n/a	removed	N/A	N/A
9	Fraxinus sp.	Ash species	n/a	PRIVATE	removed		N/A	N/A
10	Pinus nigra	Austrian Pine	20	PRIVATE	Good	overgrown with Grapevine	REMOVE	CONSTRUCTION CONFLICT
11	Group: Sorbaria sorbifolia, Fraxinus sp., Lonicera sp.	Group: False Spirea, Ash species, Honeysuckle	n/a	PRIVATE	n/a	overgrown with Grapevine	N/A	N/A
12	Fraxinus sp.	Ash species	n/a	PRIVATE	n/a	removed	N/A	N/A
13	Lonicera sp.	large Honeysuckle	n/a	PRIVATE	Moderate		REMOVE	CONSTRUCTION CONFLICT
14	Group: Rhamnus cathartica	Group: Buckhorn	n/a	PRIVATE	n/a		N/A	N/A
15	Fraxinus sp.	Ash species	n/a	BOUNDARY	n/a	removed	N/A	N/A
16	Ulmus americana	American Elm	40	BOUNDARY	Moderate	codominant stems with included bark at 1.1 m	REMOVE	CONSTRUCTION CONFLICT

17	Group: Rhamnus cathartica, with remains of Fraxinus sp.	Group: Buckhorn, with remains of Ash species	n/a	BOUNDARY	n/a		N/A	N/A
18	Pinus nigra	Austrian Pine	10	PRIVATE	Moderate	bowled	REMAIN	
19	Group: Fraxinus sp. with Thuja occidentalis	Group: Ash species with Eastern White Cedar	n/a	BOUNDARY	Poor	poison ivy	REMAIN	
20	Pinus nigra	Austrian Pine	30	PRIVATE	Moderate	overgrown with vines	REMAIN	
21	Pinus pungens var. Glauca	Colorado Blue Spruce	20	CITY	Moderate	overgrown with vines	REMAIN	
22	Pinus nigra	Austrian Pine	20	PRIVATE	Moderate	overgrown with vines	REMOVE	CONSTRUCTION CONFLICT
23	Fraxinus sp.	Ash species	n/a	PRIVATE	n/a	regenerating	N/A	N/A
24	Pinus nigra	Austrian Pine	30	PRIVATE	Good		REMOVE	CONSTRUCTION CONFLICT
25	Fraxinus sp.	Ash species	n/a	PRIVATE	n/a	regenerating	N/A	N/A
26	Gleditsia tricanthos	Honeylocust	35	PRIVATE	Good		REMOVE	CONSTRUCTION CONFLICT
27	Group: Rhamnus cathartica, juniperus Gleditsia tricanthos	Group: Buckhorn, Juniperus Honeylocust	n/a	CITY	n/a		N/A	N/A
28	Fraxinus sp.	Ash species	n/a	REMAIN	n/a	regenerating	N/A	N/A
29	Gleditsia tricanthos	Honeylocust	35	PRIVATE	Good		REMOVE	CONSTRUCTION CONFLICT
30	Pinus pungens var. Glauca	Colorado Blue Spruce	15	PRIVATE	Moderate	healthy with poor form	REMOVE	CONSTRUCTION CONFLICT
31	Pinus pungens	Colorado Spruce	25	PRIVATE	Moderate	crowded	REMOVE	CONSTRUCTION CONFLICT
32	Fraxinus sp.	Ash species	n/a	PRIVATE	n/a	regenerating	N/A	N/A
33	Pinus pungens var. Glauca	Colorado Blue Spruce	20	PRIVATE	Poor	spare foliage poor form	REMOVE	CONSTRUCTION CONFLICT
34	Fraxinus sp.	Ash species	n/a	CITY	n/a	regenerating	N/A	N/A
35	Pinus pungens var. Glauca	Colorado Blue Spruce	25	PRIVATE	Moderate	bowled	REMOVE	CONSTRUCTION CONFLICT
36	Group: Fraxinus sp.	Group: Ash species	n/a	PRIVATE	n/a	Ash removed and regenerating, with buckhorn with vines	N/A	N/A
<b>D - Parking blank</b>								
14	Quercus macrocarpa	Burr Oak	20	PRIVATE	Moderate	Small leaves, sparse foliage, good form	REMOVE	CONSTRUCTION CONFLICT
15	Pinus nigra	Austrian Pine	25	PRIVATE	Good		REMOVE	CONSTRUCTION CONFLICT
16	Rhamnus cathartica	Buckhorn	n/a	PRIVATE	N/A		REMOVE	CONSTRUCTION CONFLICT
17	Pinus nigra	Austrian Pine	n/a	PRIVATE	Moderate-Good		REMOVE	CONSTRUCTION CONFLICT
19	Fraxinus sp.	Ash species	n/a	PRIVATE	Dead		N/A	N/A
20	Acer saccharum	Sugar Maple	20	PRIVATE	Poor	Frank wounds, crowding from Buckhorn	REMOVE	CONSTRUCTION CONFLICT
21	Fraxinus sp.	Ash species	n/a	PRIVATE	n/a	removed	N/A	N/A
22	Abies balsamea	Balsam Fir	20	PRIVATE	Moderate	asymmetrical form	REMOVE	CONSTRUCTION CONFLICT
23	Abies balsamea	Balsam Fir	25	PRIVATE	Poor	large Gall poor Vigor	REMOVE	CONSTRUCTION CONFLICT
24	Acer saccharum	Sugar Maple	25	PRIVATE	Good		REMOVE	CONSTRUCTION CONFLICT
25	Pinus nigra	Austrian Pine	15	PRIVATE	Good		REMOVE	CONSTRUCTION CONFLICT
26	Thuja occidentalis	Eastern White cedar	M55 15-20	PRIVATE	Good		REMOVE	CONSTRUCTION CONFLICT
27	Fraxinus sp.	Ash species	n/a	PRIVATE	n/a	removed	N/A	N/A
28	Ulmus americana	American Elm	40	PRIVATE	Good		REMOVE	CONSTRUCTION CONFLICT
29	Group: Thuja occidentalis	Group: Eastern White Cedar	n/a	PRIVATE	Good	Colonized with Grapevine	N/A	N/A
30	Fraxinus sp. removed	Ash species	n/a	PRIVATE	n/a	removed	N/A	N/A
31	Acer rubrum	Red Maple	M5 5-15	PRIVATE	Poor	significant damage to largest stem	REMOVE	CONSTRUCTION CONFLICT
32	Acer saccharum	Sugar Maple	30	PRIVATE	Good		REMOVE	CONSTRUCTION CONFLICT
33	Fraxinus sp.	Ash species	n/a	PRIVATE	n/a	removed	N/A	N/A
<b>E - Building west</b>								
188a	Quercus rubra	Red Oak	35	PRIVATE	Good		REMOVE	CONSTRUCTION CONFLICT
188b	Pinus strobus	White Spruce	15	PRIVATE	Good		REMOVE	CONSTRUCTION CONFLICT
189	Quercus rubra	Red Oak	25	PRIVATE	Good		REMOVE	CONSTRUCTION CONFLICT
190	Acer saccharum	Sugar Maple	35	PRIVATE	Good		REMOVE	CONSTRUCTION CONFLICT
191	Quercus rubra	Red Oak	20	PRIVATE	Good		REMOVE	CONSTRUCTION CONFLICT
192	Pinus pungens var. Glauca	Colorado Blue Spruce	20	PRIVATE	Moderate	Memorial tree - nearby plaque	REMOVE	CONSTRUCTION CONFLICT
193	Group: x3 Pinus strobus	Group: x3 White Pine	15-25	PRIVATE	Moderate-Good	dense understory of buckhorn	REMOVE	CONSTRUCTION CONFLICT
194	Catalpa speciosa	Catalpa	10	PRIVATE	Poor-Moderate	crowded	REMOVE	CONSTRUCTION CONFLICT
195	Group: Rhamnus cathartica and Dead Fraxinus sp. with Vitis sp.	Group: Buckhorn and Dead ash with Grapevine	n/a	PRIVATE	Poor		N/A	N/A
196	Group: Thuja occidentalis	Group: Eastern White cedar	n/a	PRIVATE	Moderate	Colonized with Grapevine	N/A	N/A
197	Pinus pungens var. Glauca	Colorado Blue Spruce	20	PRIVATE	Moderate-Poor	possible salt damage	REMOVE	CONSTRUCTION CONFLICT
198	Crotopogon sp.	Hawthorne	15-20	PRIVATE	Poor		REMOVE	CONSTRUCTION CONFLICT
199	Ulmus americana	American Elm	40	PRIVATE	Good	one small American Elm within grouping	REMOVE	CONSTRUCTION CONFLICT
200	Group: Thuja occidentalis	Group: eastern White Cedars	10-15	PRIVATE	dense		REMOVE	CONSTRUCTION CONFLICT
201	Quercus rubra	Red Oak	25-30	PRIVATE	Good		REMOVE	CONSTRUCTION CONFLICT
202	Pinus strobus	White Pine	10-15	PRIVATE	Good		REMOVE	CONSTRUCTION CONFLICT

REFER TO SITE PLAN APPLICATION #007-12-23-0138 FOR ADDITIONAL INFORMATION

Area/ Number	Botanical Name	Common Name	DBH	Ownership
<b>F - Adjacent Property 606 March (</b>				