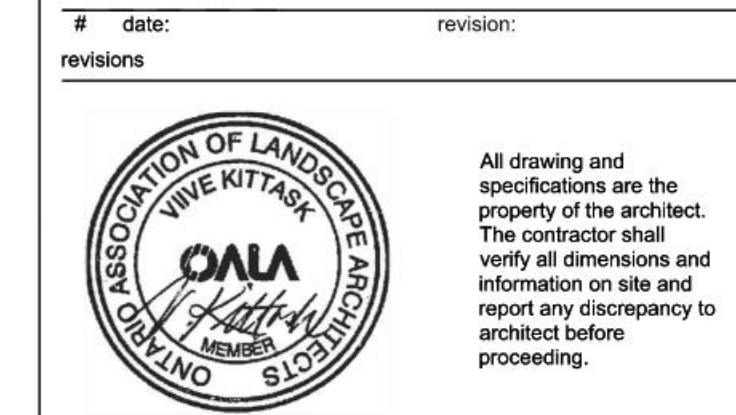


LEGEND

PROPERTY LINE	DECIDUOUS SHRUB
CANOPY ABOVE SEE ARCH	CONIFEROUS SHRUB
CONCRETE PAVING	PERENNIALS, GRASSES AND GROUNDCOVERS
TINTED CONCRETE PAVING	GREEN ROOF
VEHICULAR CONCRETE PAVING	BALLAST MAINTENANCE STRIP
SHARPER TINTED CONCRETE PAVING	PARKING 1800X36
INDIGENOUS ARCHWAY ELEVATION	OVERSIZED BIKES PARKING 2600X875
UNIT PAVING TYPE ONE 300MM	BENCH TYPE ONE
UNIT PAVING TYPE TWO	BENCH TYPE TWO
MULTI USE PATH	CURVED BENCH
RUBBER SAFETY SURFACE	ACCESSIBLE SEATING SPACE
TACTILE ATTENTION INDICATOR	WASTE RECEPTACLE TYPE ONE
TACTILE DIRECTIONAL INDICATOR	DOG WASTE RECEPTACLE
CONCRETE PLANTER CURB	UMBRELLA FIXED IN PLACE
PRECAST RETAINING WALL	SHADE SAIL
CAST IN PLACE CONCRETE RETAINING WALL WITH GUARDRAIL	FUTURE ART SCULPTURE BY OTHERS
ORNAMENTAL METAL FENCE 1800mm HT	ALONGSIDE WALKING WHEEL
ORNAMENTAL METAL FENCE & DOUBLE GATE 1800mm HT	VERTICAL DISC ARTISTIC FEATURE
EXISTING SOD	INDIGENOUS DIRECTIONAL SIGNAGE
SOD	INTERPRETIVE SIGNAGE
ARTIFICIAL TURF	SIGNAGE SEE WAYFINDING
EXISTING DECIDUOUS TREE TO REMAIN	LIGHT POLES SEE ELEC.
EXISTING CONIFEROUS TREE TO REMAIN	SECURITY BOLLARD
EXISTING VEGETATION TO REMAIN	HOSE BB SEE MECH
DECIDUOUS TREE	VALVE BOX SEE CIVIL
MULTI-STEMMED DECIDUOUS TREE	MANHOLE SEE CIVIL
CONIFEROUS TREE	CATCH BASIN SEE CIVIL
MULTI-STEMMED DECIDUOUS SHRUB	FIRE HYDRANT SEE CIVIL

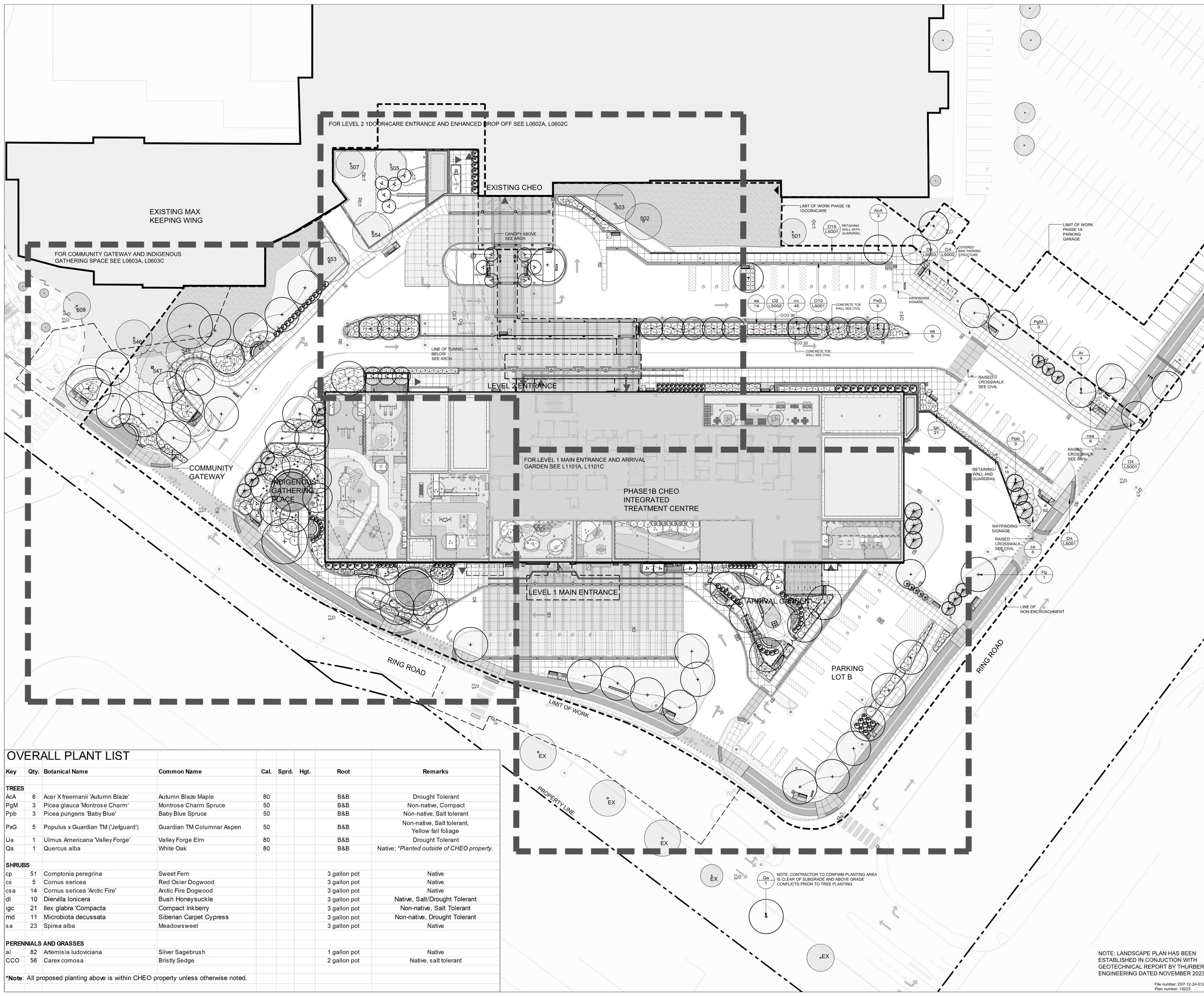
17	2025-10-01	ISSUED FOR SITE PLAN CONTROL
16	2025-09-09	RESUBMISSION R2
15	2025-09-08	ISSUED FOR L1-04
14	2025-08-02	ISSUED FOR L1-03
13	2025-07-02	ISSUED FOR L1-02
12	2025-06-14	ISSUED FOR SITE PLAN CONTROL
11	2025-04-01	ISSUED FOR 100% CD
10	2025-03-11	ISSUED FOR 100% CD R1
9	2025-02-23	ISSUED FOR SITE PLAN CONTROL
8	2024-12-09	ISSUED FOR SITE PLAN CONTROL
7	2024-11-27	ISSUED FOR 100% CD



CHEO Integrated Treatment Centre
401 Smyth Rd
Ottawa, ON K1H 8L1

OVERALL CHEO INTEGRATED TREATMENT LANDSCAPE PLAN

scale: 1:250
drawn by: JWW/V
reviewed by: VK
job number: 2023
plot date: 2025-10-01
drawing number: **L0601**



OVERALL PLANT LIST

Key	Qty.	Botanical Name	Common Name	Cal.	Sprd.	Hgt.	Root	Remarks
TREES								
Aca	6	Acer X freemanii 'Autumn Blaze'	Autumn Blaze Maple	80			B&B	Drought Tolerant
PgM	3	Picea glauca 'Montrose Charm'	Montrose Charm Spruce	50			B&B	Non-native, Compact
Ppb	3	Picea pungens 'Baby Blue'	Baby Blue Spruce	50			B&B	Non-native, Salt tolerant
PxG	5	Populus x Guardian TM ('Jefguard')	Guardian TM Columnar Aspen	50			B&B	Non-native, Salt tolerant, Yellow fall foliage
Ua	1	Ulmus Americana 'Valley Forge'	Valley Forge Elm	80			B&B	Drought Tolerant
Qa	1	Quercus alba	White Oak	80			B&B	Native; *Planted outside of CHEO property.
SHRUBS								
cp	51	Comptonia peregrina	Sweet Fern				3 gallon pot	Native
cs	5	Cornus sericea	Red Osier Dogwood				3 gallon pot	Native
csa	14	Cornus sericea 'Arctic Fire'	Arctic Fire Dogwood				3 gallon pot	Native
dl	10	Dierilla lonicera	Bush Honeysuckle				3 gallon pot	Native, Salt/Drought Tolerant
lgc	21	Ilex glabra 'Compacta'	Compact Inkberry				3 gallon pot	Non-native, Salt Tolerant
md	11	Microbiota decussata	Siberian Carpet Cypress				3 gallon pot	Non-native, Drought Tolerant
sa	23	Spiraea alba	Meadowsweet				3 gallon pot	Native
PERENNIALS AND GRASSES								
al	82	Artemisia ludoviciana	Silver Sagebrush				1 gallon pot	Native
CCO	56	Carex comosa	Bristly Sedge				2 gallon pot	Native, salt tolerant

*Note: All proposed planting above is within CHEO property unless otherwise noted.

NOTE: LANDSCAPE PLAN HAS BEEN ESTABLISHED IN CONJUNCTION WITH GEOTECHNICAL REPORT BY THURBER ENGINEERING DATED NOVEMBER 2023

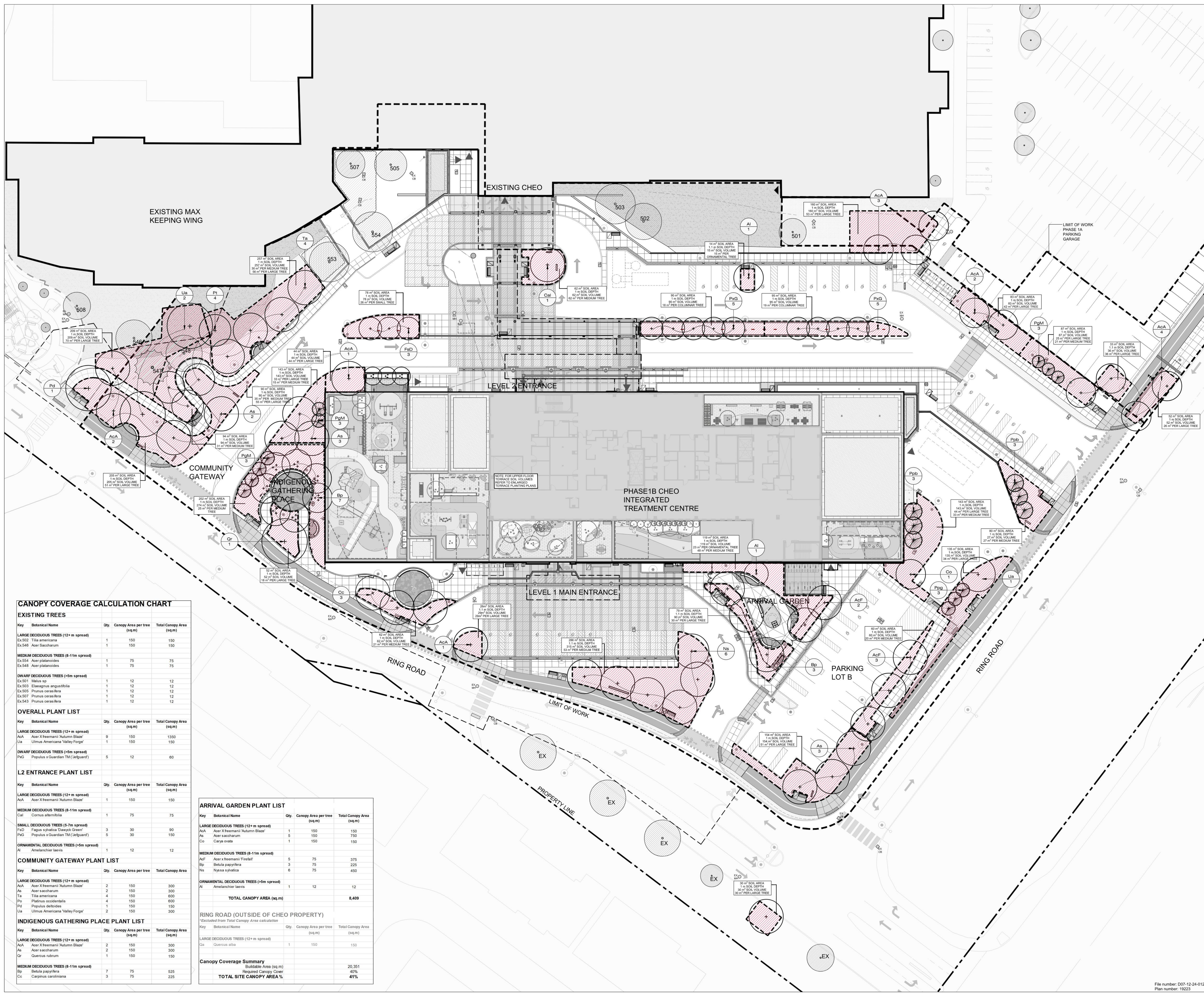
File number: D07-12-24-0121
Plan number: 19223

2025-11-20 13:14:47 PM Autodesk Docs\202504_L1-04_CHEO_R2\202504_L1-04_CHEO_L0601.dwg, MVA, MVA, R22.XT

KEYPLAN

LEGEND

- PROPERTY LINE
- CANOPY ARCHIVE
- EXISTING DECIDUOUS TREES TO REMAIN
- EXISTING CONIFEROUS TREES TO REMAIN
- EXISTING VEGETATION TO REMAIN
- DECIDUOUS TREE
- MULTI-STEMMED TREE
- CONIFEROUS TREE
- MULTI-STEMMED DECIDUOUS SHRUB
- SOIL AREA



CANOPY COVERAGE CALCULATION CHART

EXISTING TREES

Key	Botanical Name	Qty	Canopy Area per tree (sq.m)	Total Canopy Area (sq.m)
LARGE DECIDUOUS TREES (12+ m spread)				
Ex.502	Tilia americana	1	150	150
Ex.548	Acer saccharum	1	150	150
MEDIUM DECIDUOUS TREES (8-11m spread)				
Ex.554	Acer platanoides	1	75	75
Ex.548	Acer platanoides	1	75	75
DWARF DECIDUOUS TREES (<5m spread)				
Ex.501	Malus sp	1	12	12
Ex.503	Elaeagnus angustifolia	1	12	12
Ex.505	Prunus cerasifera	1	12	12
Ex.507	Prunus cerasifera	1	12	12
Ex.543	Prunus cerasifera	1	12	12

OVERALL PLANT LIST

Key	Botanical Name	Qty	Canopy Area per tree (sq.m)	Total Canopy Area (sq.m)
LARGE DECIDUOUS TREES (12+ m spread)				
ACA	Acer x freemanii 'Autumn Blaze'	9	150	1350
Ua	Ulmus americana 'Valley Forge'	1	150	150
DWARF DECIDUOUS TREES (<5m spread)				
PxG	Populus x Guardian TM 'Jelguard'	5	12	60

L2 ENTRANCE PLANT LIST

Key	Botanical Name	Qty	Canopy Area per tree (sq.m)	Total Canopy Area (sq.m)
LARGE DECIDUOUS TREES (12+ m spread)				
ACA	Acer x freemanii 'Autumn Blaze'	1	150	150
MEDIUM DECIDUOUS TREES (8-11m spread)				
Ca1	Cornus alternifolia	1	75	75
SMALL DECIDUOUS TREES (5-7m spread)				
PxG	Populus x Guardian TM 'Jelguard'	3	30	90
PxG	Populus x Guardian TM 'Jelguard'	5	30	150
ORNAMENTAL DECIDUOUS TREES (<5m spread)				
Al	Amelanchier laevis	1	12	12

COMMUNITY GATEWAY PLANT LIST

Key	Botanical Name	Qty	Canopy Area per tree (sq.m)	Total Canopy Area (sq.m)
LARGE DECIDUOUS TREES (12+ m spread)				
ACA	Acer x freemanii 'Autumn Blaze'	2	150	300
As	Acer saccharum	2	150	300
Ta	Tilia americana	4	150	600
Po	Platanus occidentalis	4	150	600
Pd	Populus deltoides	1	150	150
Ua	Ulmus americana 'Valley Forge'	2	150	300
INDIGENOUS GATHERING PLACE PLANT LIST				
LARGE DECIDUOUS TREES (12+ m spread)				
ACA	Acer x freemanii 'Autumn Blaze'	2	150	300
As	Acer saccharum	2	150	300
Qr	Quercus rubra	1	150	150
MEDIUM DECIDUOUS TREES (8-11m spread)				
Bp	Betula papyrifera	7	75	525
Cc	Carpinus caroliniana	3	75	225

ARRIVAL GARDEN PLANT LIST

Key	Botanical Name	Qty	Canopy Area per tree (sq.m)	Total Canopy Area (sq.m)
LARGE DECIDUOUS TREES (12+ m spread)				
ACA	Acer x freemanii 'Autumn Blaze'	1	150	150
As	Acer saccharum	5	150	750
Co	Carya ovata	1	150	150
MEDIUM DECIDUOUS TREES (8-11m spread)				
AcF	Acer x freemanii 'Firefall'	5	75	375
Bp	Betula papyrifera	3	75	225
Ns	Nyssa sylvatica	6	75	450
ORNAMENTAL DECIDUOUS TREES (<5m spread)				
Al	Amelanchier laevis	1	12	12
TOTAL CANOPY AREA (sq.m)				8,409

RING ROAD (OUTSIDE OF CHEO PROPERTY)

*Excluded from Total Canopy Area calculation

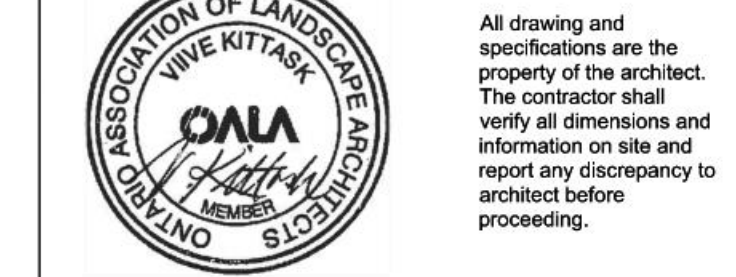
Key	Botanical Name	Qty	Canopy Area per tree (sq.m)	Total Canopy Area (sq.m)
LARGE DECIDUOUS TREES (12+ m spread)				
Qa	Quercus alba	1	150	150

Canopy Coverage Summary

Buildable Area (sq.m)	20,351
Required Canopy Cover	40%
TOTAL SITE CANOPY AREA %	41%

17	2025-10-01	ISSUED FOR SITE PLAN CONTROL
16	2025-09-09	REVISION R2
15	2025-09-08	ISSUED FOR L2-04
14	2025-08-20	ISSUED FOR L2-03
13	2025-07-22	ISSUED FOR L2-02
12	2025-06-14	ISSUED FOR L2-01
11	2025-04-01	ISSUED FOR SITE PLAN CONTROL
10	2025-03-31	ISSUED FOR 100% CD RT
9	2025-02-20	ISSUED FOR SITE PLAN CONTROL
8	2024-12-09	ISSUED FOR SITE PLAN CONTROL
7	2024-11-27	ISSUED FOR 100% CD

date: revision:



CHEO Integrated Treatment Centre

401 Smyth Rd
Ottawa, ON K1H 1L1

OVERALL CHEO INTEGRATED TREATMENT SOIL VOLUME AND CANOPY COVERAGE PLAN

scale: 1:250

drawn by: W/W/V

reviewed by: W/W/V

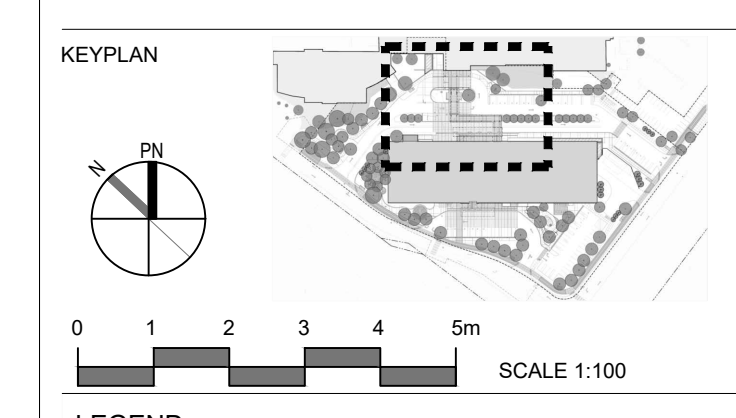
job number: 2007

plot date: 2025-10-01

drawing number:

File number: D07-12-24-0121
Plan number: 19223

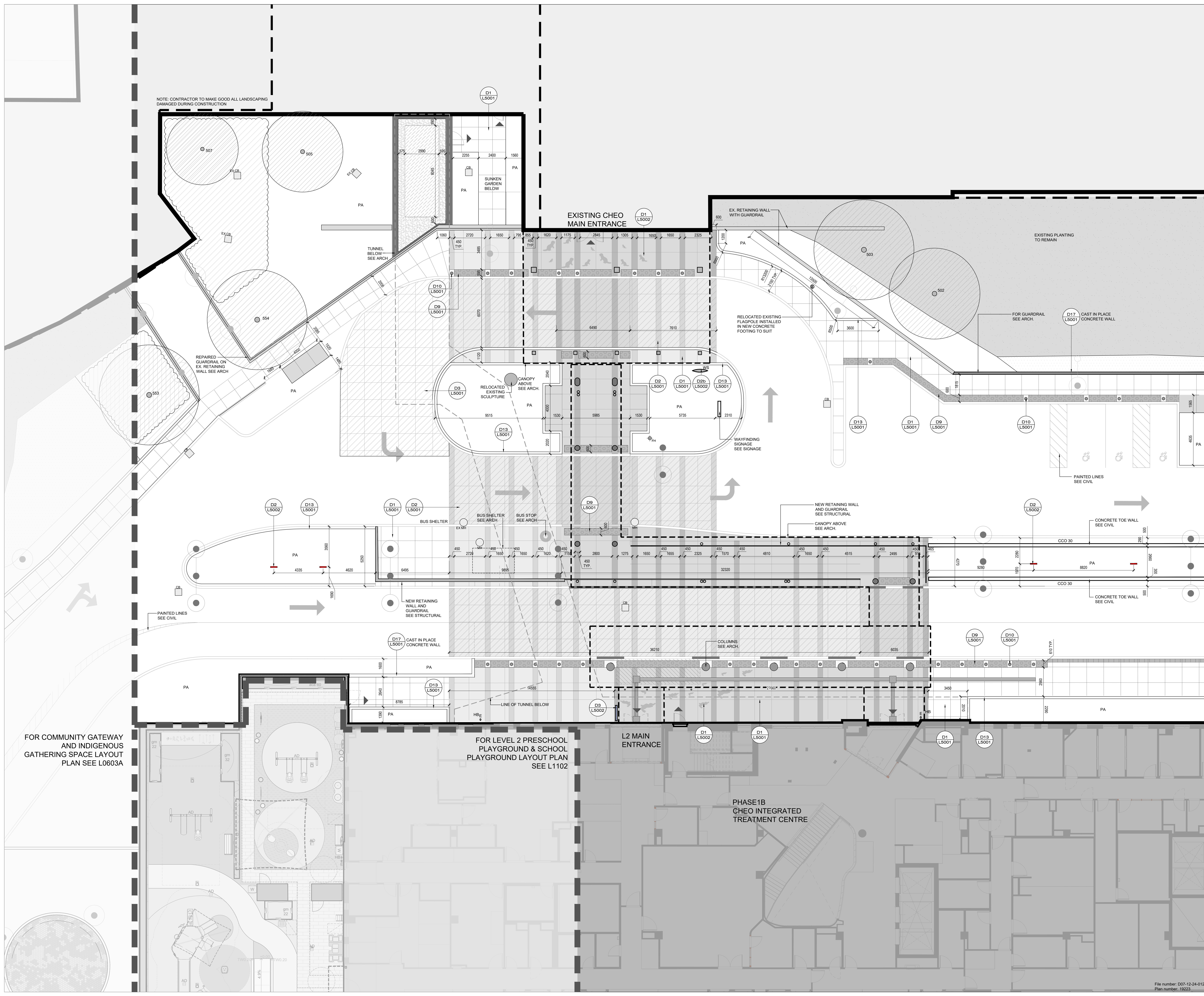
L0601SV



LEGEND

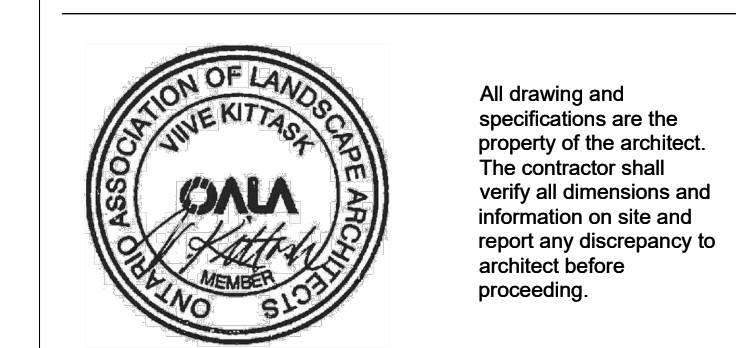
PROPERTY LINE	GREEN ROOF
CANOPY ABOVE SEE ARCH	BALLAST MAINTENANCE STRIP
CONCRETE PAVING	VERTICAL DISCS ARTISTIC FEATURE
TINTED CONCRETE PAVING	INDIGENOUS DIRECTIONAL WAYFINDING SIGNAGE
VEHICULAR CONCRETE PAVING	INDIGENOUS DIRECTIONAL WAYFINDING SIGNAGE
SANDBLASTED TINTED CONCRETE PAVING	LIGHT POLES SEE ELEC
UNIT PAVING BAND TYPE ONE 300MM WIDE	SECURITY BOLLARD
INDIGENOUS ARCHWAY LEDGEMENT	HOSE BIB SEE MECH
TACTILE ATTENTION INDICATOR	MANHOLE SEE CIVIL
TACTILE DIRECTIONAL INDICATOR	CATCH BASIN SEE CIVIL
CONCRETE PLANTER CURB	FIRE HYDRANT SEE CIVIL
CAST IN PLACE CONCRETE RETAINING WALL	
CAST IN PLACE CONCRETE RETAINING WALL WITH GUARDRAIL	
EXISTING DECIDUOUS TREE TO REMAIN	
EXISTING VEGETATION TO REMAIN	
EXISTING SOIL	
SCD	
PLANTING AREA	

NOTE: CONTRACTOR TO MAKE GOOD ALL LANDSCAPING DAMAGED DURING CONSTRUCTION



REVISIONS

#	DATE	REVISION
17	2025-10-01	ISSUED FOR SITE PLAN CONTROL
16	2025-09-09	REVISION R2
15	2025-08-08	ISSUED FOR L1-05
14	2025-08-05	ISSUED FOR L1-04
13	2025-07-22	ISSUED FOR L1-02
12	2025-06-14	ISSUED FOR L1-02
11	2025-04-01	ISSUED FOR SITE PLAN CONTROL
10	2025-03-11	REVISION
9	2025-03-11	ISSUED FOR 100% CD RT
8	2024-12-09	ISSUED FOR SITE PLAN CONTROL
7	2024-11-27	ISSUED FOR 100% CD



CHEO Integrated Treatment Centre

401 Smyth Rd
Ottawa, ON K1H 8L1

OVERALL CHEO TREATMENT CENTRE LEVEL 2 ENTRANCE LANDSCAPE LAYOUT PLAN

scale: 1:100

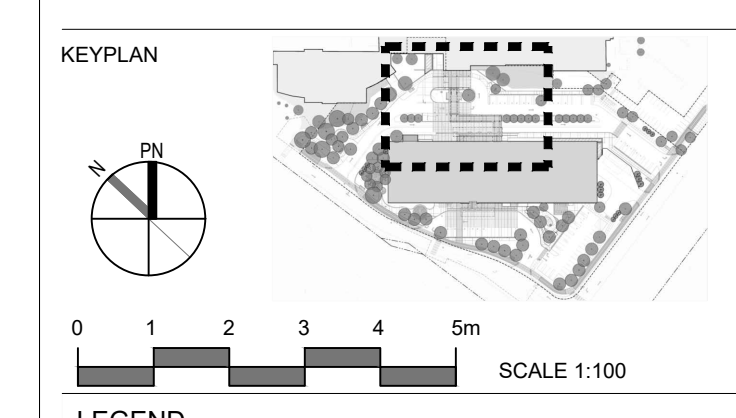
drawn by: IWVN

reviewed by: VK

job number: 2027

plot date: 2025-10-01

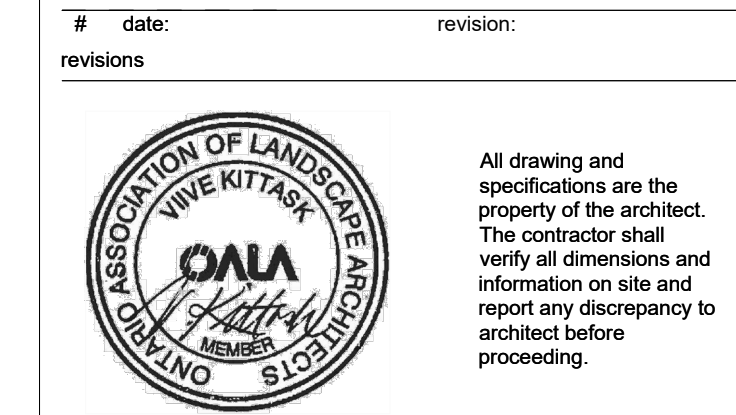
drawing number: L0602A



LEGEND

PROPERTY LINE	DECIDUOUS TREE
CANOPY ABOVE SEE ARCH	MULTI-STEMMED DECIDUOUS TREE
CONCRETE PAVING	CONFEROUS TREE
TINTED CONCRETE PAVING	MULTI-STEMMED DECIDUOUS SHRUB
VEHICULAR CONCRETE PAVING	DECIDUOUS SHRUB
SANDBLASTED TINTED CONCRETE PAVING	CONFEROUS SHRUB
UNIT PAVING BAND TYPE ONE 300MM WIDE	PERENNIALS, GRASSES AND GROUNDCOVERS
INDIGENOUS ACHYROE LEDGE/MENT	GREEN ROOF
TACTILE ATTENTION INDICATOR	BALLAST MAINTENANCE STRIP
TACTILE DIRECTIONAL INDICATOR	VERTICAL JOIST ARTISTIC FEATURE
CONCRETE PLANTER CURB	INDIGENOUS DIRECTIONAL WAYFINDING SIGNAGE
PRECAST RETAINING WALL	INTERPRETIVE SIGNAGE
CAST IN PLACE CONCRETE RETAINING WALL WITH GUARDRAIL	LIGHT POLES SEE ELEC
EXISTING DECIDUOUS TREES TO REMAIN	SECURITY BOLLARD
EXISTING VEGETATION TO REMAIN	HOSE BIB SEE MECH
EXISTING SOIL	MANHOLE SEE CIVIL
SOD	CATCH BASIN SEE CIVIL
	FIRE HYDRANT SEE CIVIL
	BENCH TYPE ONE
	BENCH TYPE TWO
	CURVED BENCH
	ACCESSIBLE SEATING SPACE
	WASTE RECEPTACLE

17	2025-10-01	ISSUED FOR SITE PLAN CONTROL
16	2025-09-09	REVISION R2
15	2025-09-08	ISSUED FOR L1-04
14	2025-08-20	ISSUED FOR L1-03
13	2025-07-22	ISSUED FOR L1-02
12	2025-06-14	ISSUED FOR L1-01
11	2025-04-01	ISSUED FOR 100% CD R1
10	2025-03-11	ISSUED FOR 100% CD R1
9	2025-02-20	ISSUED FOR SITE PLAN CONTROL
8	2024-12-09	ISSUED FOR SITE PLAN CONTROL
7	2024-11-27	ISSUED FOR 100% CD



CHEO Integrated Treatment Centre

401 Brimley Rd
Ottawa, ON K1H 8L1

CHEO INTEGRATED TREATMENT CENTRE LEVEL 2 ENTRANCE LANDSCAPE PLANTING PLAN

scale: 1:100

drawn by: IWWN

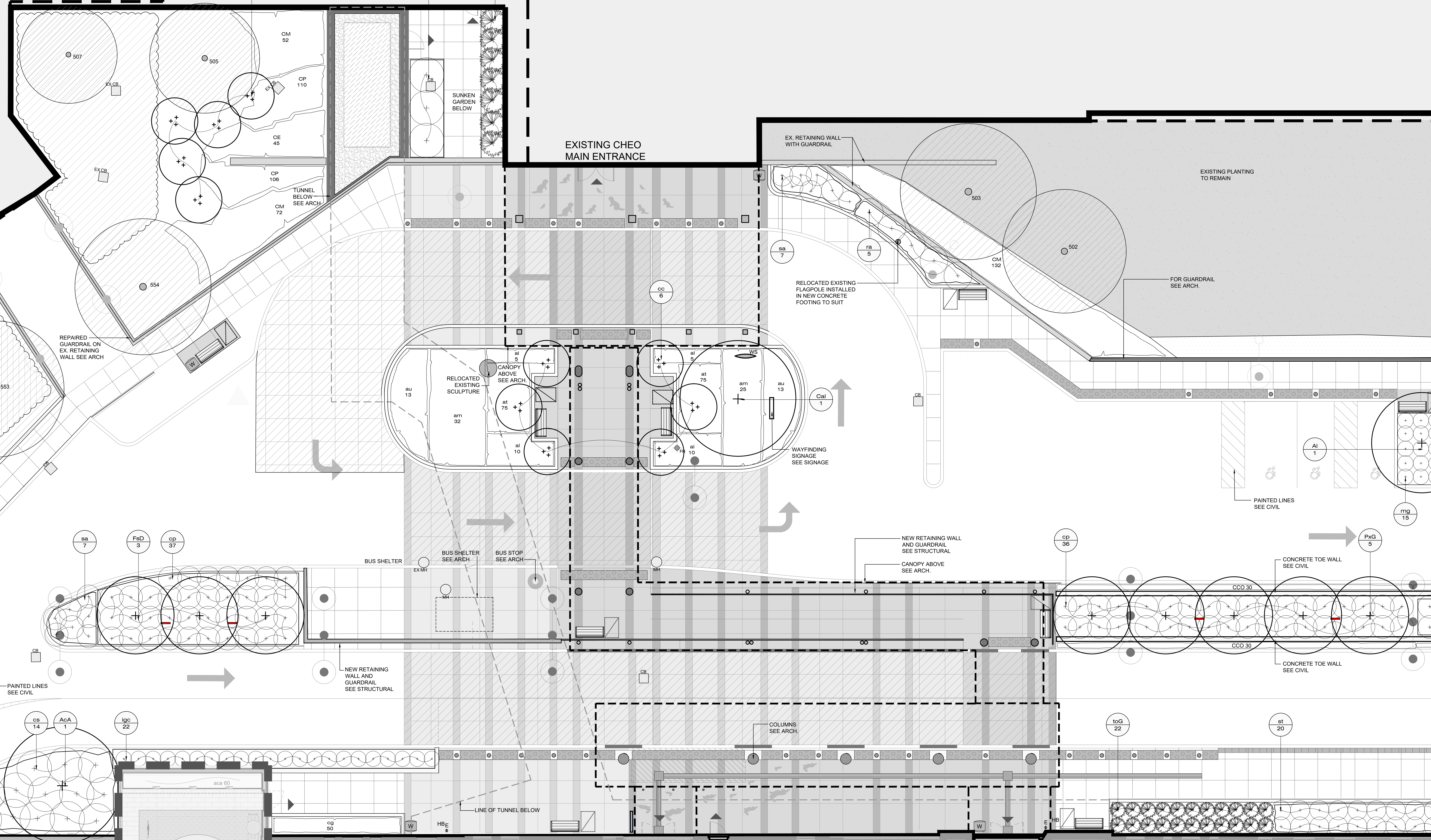
reviewed by: VK

job number: 2027

plot date: 2025-10-01

drawing number: L0602C

NOTE: CONTRACTOR TO MAKE GOOD ALL LANDSCAPING DAMAGED DURING CONSTRUCTION



FOR COMMUNITY GATEWAY AND INDIGENOUS GATHERING SPACE PLANTING PLAN SEE L0603C

FOR LEVEL 2 PRESCHOOL PLAYGROUND & SCHOOL PLAYGROUND PLANTING PLAN SEE L1102

PHASE 1B
CHEO INTEGRATED TREATMENT CENTRE

L2 ENTRANCE PLANT LIST

Key	Qty.	Botanical Name	Common Name	Cal.	Spnd.	Hgt.	Root	Remarks
TREES								
ACA	1	Acer X fraxinomi 'Autumn Blaze'	Autumn Blaze Maple	80			B&B	Drought Tolerant
AL	1	Amelanchier laevis	Allegheny Serviceberry	70			B&B	Native, medium stature tree form
CAL	1	Cornus alternifolia	Pagoda Dogwood	70			B&B	Native
PUG	3	Fagus sylvatica 'Dawyd Green'	Dawyd Green Beech	50			B&B	Native
PUG	5	Populus x Guardian TM (delgardi)	Guardian TM Columnar Aspen	50			B&B	Non-native, Salt tolerant, Yellow fall foliage
SHRUBS								
CC	8	Cornus comuta	Beaked Hazel				3 gallon pot	Native, Multi-stem
CP	73	Comptonia peregrina	Sweet Fern				3 gallon pot	Native
OS	14	Cornus sericea	Red Osier Dogwood				3 gallon pot	Native, Multi-stem
LB	5	Lindera benzoin	Spicebush				3 gallon pot	Native, Multi-stem
JP	22	Ilex glabra 'Compact'	Compact Holly				3 gallon pot	'Salt Tolerant'
JP	7	Juniperus chinensis 'San Jose'	San Jose Juniper				3 gallon pot	Drought/Salt Tolerant
MG	15	Myrica gale	Sweet Gale				3 gallon pot	Native
RA	5	Rhus aromatica	Fragrant Sumac				3 gallon pot	Native
SA	14	Spiraea alba	Meadowsweet				3 gallon pot	Native
ST	20	Spiraea tomentosa	Steeplebush				3 gallon pot	Native/Salt Tolerant
TD	22	Thuja occidentalis 'Little Giant'	Little Giant Cedar				3 gallon pot	Non-native
VI	3	Nannyberry	Viburnum lentago				3 gallon pot	Native
PERENNIALS AND GRASSES								
AL	30	Artemisia ludoviciana	Silver Sagebrush				1 gallon pot	Native, salt tolerant
AM	57	Achillea millefolium	Common Yarrow				1 gallon pot	Native, butterfly friendly, salt tolerant
AT	150	Asclepias tuberosa	Butterfly Milkweed				1 gallon pot	Native, butterfly friendly, salt tolerant
AU	28	Arctostaphylos uva-ursi	Bearberry				1 gallon pot	Native, evergreen, salt tolerant
CCG	60	Carex comosa	Bristly Sedge				2 gallon pot	Native, salt tolerant
CE	45	Carex eburnea	Bristle-leaf Sedge Grass				2 gallon pot	Native, salt and shade tolerant
CP	216	Carex pensylvanica	Oak Sedge				2 gallon pot	Native, shade tolerant
CM	259	Cephalanthus missillanensis	Butterbush				2 gallon pot	Native
IG	50	Chelone glabra	Turtlehead				1 gallon pot	Native

*Note: All proposed planting is within CHEO property.

FOR COMMUNITY GATEWAY AND INDIGENOUS GATHERING SPACE LAYOUT PLAN SEE L0603A

PHASE 1B
CHEO INTEGRATED
TREATMENT CENTRE

LEVEL 1
ENTRANCE

LEVEL 1 STAFF
ENTRANCE

MAIN
ARRIVAL
GARDEN

PARKING LOT B

RING ROAD

PROPERTY LINE

ADDITIONAL WORK BOUNDARY

LIMIT OF WORK

LINE OF
NON-ENCROACHMENT

EX

EX

EX



1Door4Care



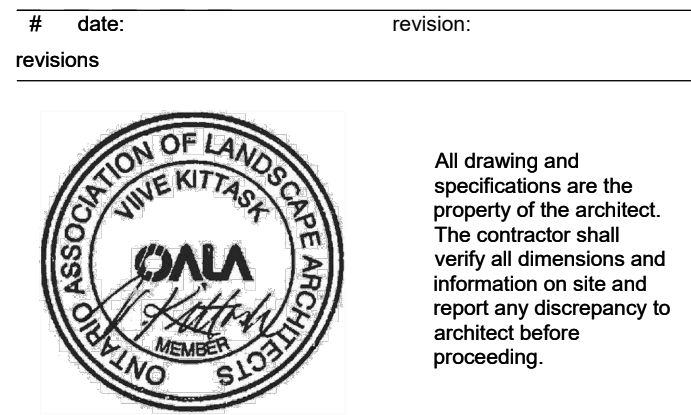
VERTECHS
DESIGN
landscape architects



LEGEND

PROPERTY LINE	SHADE SAIL
CANOPY ABOVE SEE ARCH	INDIGENOUS DIRECTIONAL WAYFINDING SIGNAGE
CONCRETE PAVING	LIGHT POLES SEE ELEC
TINTED CONCRETE PAVING	SECURITY BOLLARD
SANDCASTLED TINTED CONCRETE PAVING	HOLE SEE MECH
INDIGENOUS ACROPHONY LEDGEMENT	MANHOLE SEE CIVIL
UNIT PAVING BAND TYPE ONE 300MM WIDE	CATCH BASIN
UNIT PAVING TYPE TWO	
MULTI USE PATH	
RUBBER SAFETY SURFACE	
TACTILE ATTENTION INDICATOR	
TACTILE DIRECTIONAL INDICATOR	
CONCRETE PLANTER CURB	
ORNAMENTAL METAL FENCE 1800mm HT	
ORNAMENTAL METAL FENCE & DOUBLE GATE 1800mm HT	
ARTIFICIAL TURF	
PLANTING AREA	

- 17 2025-10-01 ISSUED FOR SITE PLAN CONTROL
- 16 2025-09-09 RESUBMISSION R2
- 15 2025-09-08 ISSUED FOR 100% CD
- 14 2025-08-05 ISSUED FOR 100% CD
- 13 2025-07-02 ISSUED FOR 100% CD
- 12 2025-06-14 ISSUED FOR 100% CD
- 11 2025-04-01 ISSUED FOR 100% CD
- 10 2025-03-01 ISSUED FOR 100% CD
- 9 2025-02-23 RESUBMISSION R1
- 8 2024-12-09 ISSUED FOR 100% CD
- 7 2024-11-27 ISSUED FOR 100% CD



CHEO Integrated Treatment Centre

401 Smyth Rd
Ottawa, ON K1H 8L1

ARRIVAL GARDEN AND
CHEO INTEGRATED
TREATMENT CENTRE
LEVEL 1 MAIN ENTRANCE
LANDSCAPE LAYOUT PLAN

scale: 1:100
drawn by: JWW/VN
reviewed by: VK
job number: 2023
plot date: 2025-10-01
drawing number:

L1101A

File number: D07-12-24-0121
Plan number: 19223

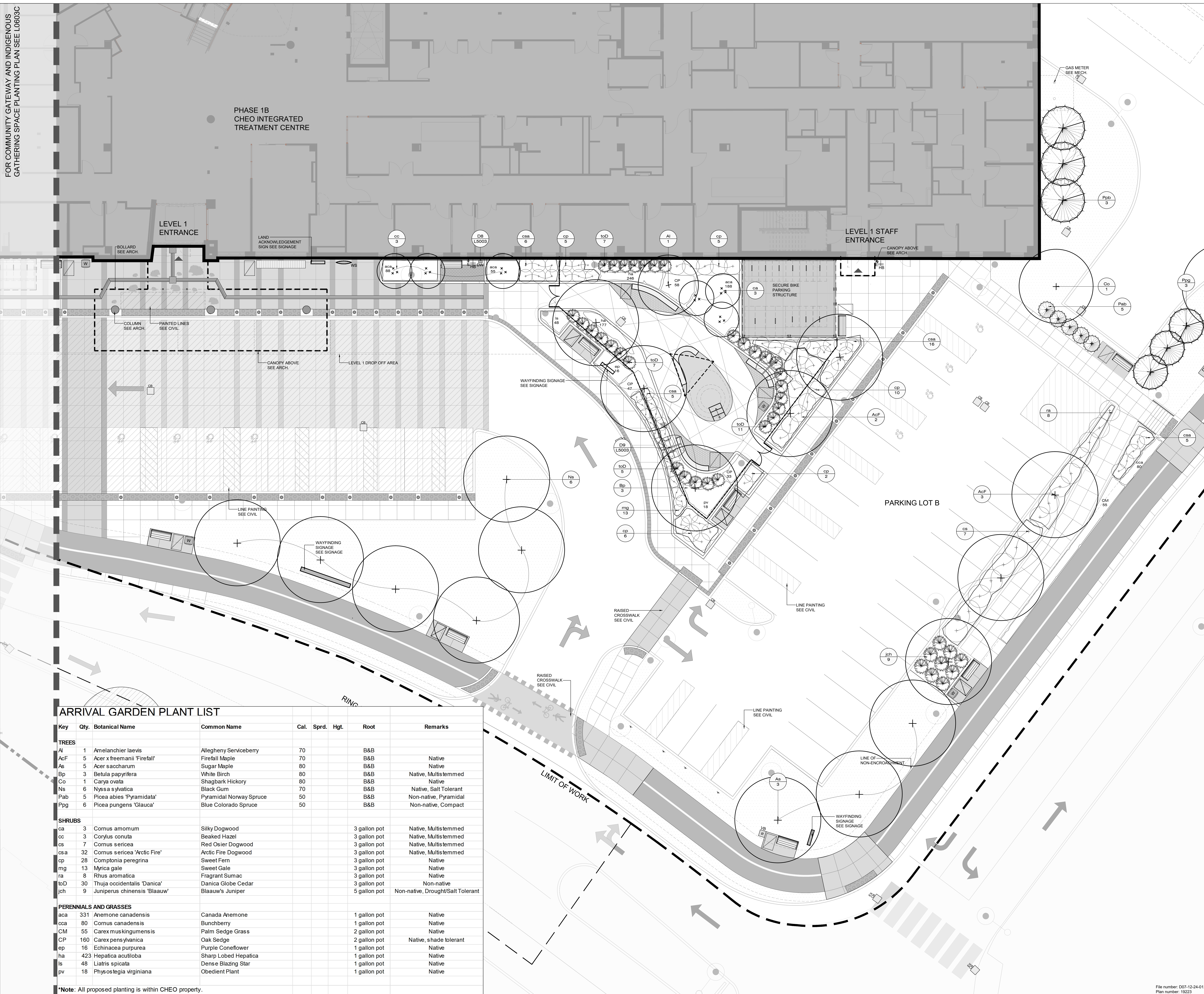
2025.11.20.13.14.17 PM AutodeskDWG2025Dwg - L1101A_CHEO_R20250001.dwg - CHEO - MVA, MVA, R2025

FOR COMMUNITY GATEWAY AND INDIGENOUS GATHERING SPACE PLANTING PLAN SEE L0603C

PHASE 1B
CHEO INTEGRATED
TREATMENT CENTRE

LEVEL 1
ENTRANCE

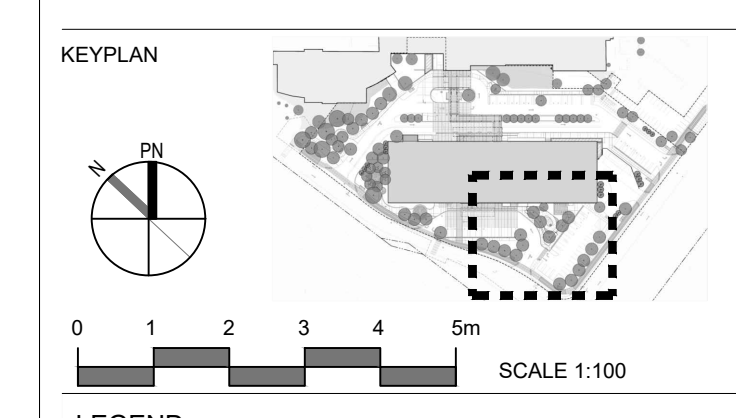
LEVEL 1 STAFF
ENTRANCE



ARRIVAL GARDEN PLANT LIST

Key	Qty.	Botanical Name	Common Name	Cal.	Sprd.	Hgt.	Root	Remarks
TREES								
Al	1	Amelanchier laevis	Allegheny Serviceberry	70			B&B	
AcF	5	Acer x freemanii 'Firefall'	Firefall Maple	70			B&B	Native
As	5	Acer saccharum	Sugar Maple	80			B&B	Native
Bp	3	Betula papyrifera	White Birch	80			B&B	Native, Multistemmed
Co	1	Carya ovata	Shagbark Hickory	80			B&B	Native
Ns	6	Nyssa sylvatica	Black Gum	70			B&B	Native, Salt Tolerant
Pab	5	Picea abies 'Pyramidata'	Pyramidal Norway Spruce	50			B&B	Non-native, Pyramidal
Ppg	6	Picea pungens 'Glauca'	Blue Colorado Spruce	50			B&B	Non-native, Compact
SHRUBS								
ca	3	Cornus amomum	Silky Dogwood				3 gallon pot	Native, Multistemmed
cc	3	Corylus conata	Beaked Hazel				3 gallon pot	Native, Multistemmed
cs	7	Cornus sericea	Red Osier Dogwood				3 gallon pot	Native, Multistemmed
csa	32	Cornus sericea 'Arctic Fire'	Arctic Fire Dogwood				3 gallon pot	Native, Multistemmed
cp	28	Comptonia peregrina	Sweet Fern				3 gallon pot	Native
mg	13	Myrica gale	Sweet Gale				3 gallon pot	Native
ra	8	Rhus aromatica	Fragrant Sumac				3 gallon pot	Native
toD	30	Thuja occidentalis 'Danica'	Danica Globe Cedar				3 gallon pot	Non-native
jch	9	Juniperus chinensis 'Blauw'	Blauw's Juniper				5 gallon pot	Non-native, Drought/Salt Tolerant
PERENNIALS AND GRASSES								
aca	331	Anemone canadensis	Canada Anemone				1 gallon pot	Native
cca	80	Cornus canadensis	Bunchberry				1 gallon pot	Native
CM	55	Carex muskingumensis	Palm Sedge Grass				2 gallon pot	Native
CP	160	Carex pensylvanica	Oak Sedge				2 gallon pot	Native, shade tolerant
ep	16	Echinacea purpurea	Purple Coneflower				1 gallon pot	Native
ha	423	Hepatica acutiloba	Sharp Lobed Hepatica				1 gallon pot	Native
ls	48	Liatris spicata	Dense Blazing Star				1 gallon pot	Native
pv	18	Physostegia virginiana	Obedient Plant				1 gallon pot	Native

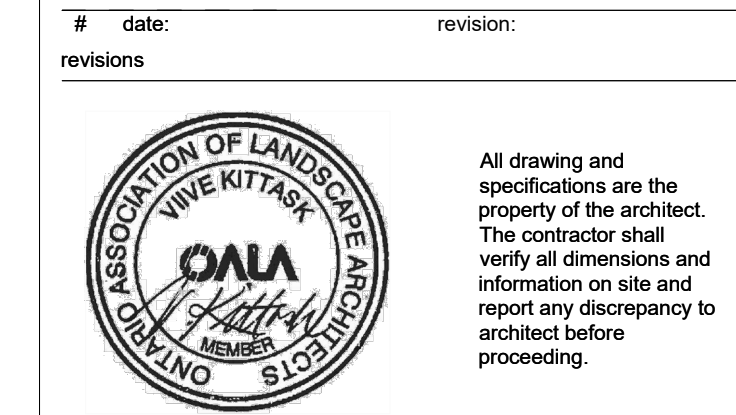
*Note: All proposed planting is within CHEO property.



LEGEND

PROPERTY LINE	DECIDUOUS TREE
CANOPY ABOVE SEE ARCH	MULTI-STEMMED DECIDUOUS TREE
CONCRETE PAVING	CONIFEROUS TREE
TINTED CONCRETE PAVING	MULTI-STEMMED DECIDUOUS SHRUB
SANDBLASTED TINTED CONCRETE PAVING	CONIFEROUS SHRUB
INDIGENOUS LEDGEMENT	PERENNIALS, GRASSES AND GROUNDCOVERS
UNIT PAVING BAND TYPE ONE 300MM WIDE	BENCH TYPE ONE
UNIT PAVING TYPE TWO	BENCH TYPE TWO
MULTI USE PATH	CURVED BENCH
RUBBER SAFETY SURFACE	ACCESSIBLE SEATING
TACTILE ATTENTION INDICATOR	WASTE RECEPTACLE
TACTILE DIRECTIONAL INDICATOR	DOG WASTE RECEPTACLE
CONCRETE PLANTER CURB	UMBRELLA FIXED IN PLACE
ORNAMENTAL METAL FENCE 1800mm HT	SHADE SAIL
ORNAMENTAL METAL FENCE & DOUBLE GATE 1800mm HT	INDIGENOUS WAYFINDING SIGNAGE
SOO	LIGHT POLES SEE ELEC.
ARTIFICIAL TURF	SECURITY BOLLARD
	HOSE BIB SEE MECH.
	MANHOLE SEE CIVIL
	CATCH BASIN SEE CIVIL

17	2025-10-01	ISSUED FOR SITE PLAN CONTROL. RESUBMISSION R2
16	2025-09-09	RESUBMISSION R2
15	2025-08-08	ISSUED FOR L1-04
14	2025-08-05	ISSUED FOR L1-03
13	2025-07-22	ISSUED FOR L1-02
12	2025-06-14	ISSUED FOR L1-01
11	2025-04-01	ISSUED FOR SITE PLAN CONTROL. RESUBMISSION
10	2025-03-31	ISSUED FOR 100% CD RT
9	2025-02-20	RESUBMISSION RT
8	2024-12-09	ISSUED FOR SITE PLAN CONTROL. RESUBMISSION
7	2024-11-27	ISSUED FOR 100% CD



CHEO Integrated Treatment Centre

403 Smyth Rd
Ottawa, ON K1H 8L1

ARRIVAL GARDEN AND CHEO INTEGRATED TREATMENT CENTRE LEVEL 1 MAIN ENTRANCE LANDSCAPE PLANTING PLAN

scale: 1:100
drawn by: IWVN
reviewed by: VK
job number: 2023
plot date: 2025-10-01
drawing number: L1101C