

QTY	BOTANICAL NAME	COMMON NAME	SIZE	COND	SPACING
<b>Reforestation Mix</b>					
<b>Coniferous Trees</b>					
5%	Abies balsamea	Balsam Fir	0.60m H	PT	2.0m O.C.
5%	Larix laricina	Tamarack	0.60m H	PT	2.0m O.C.
5%	Pinus banksiana	Jack Pine	0.60m H	PT	2.0m O.C.
5%	Pinus strobus	Eastern White Pine	0.60m H	PT	2.0m O.C.
5%	Thuja occidentalis	Eastern White Cedar	0.60m H	PT	2.0m O.C.
<b>Deciduous Trees</b>					
10%	Acer rubrum	Red Maple	1.20m H	PT	2.0m O.C.
5%	Acer saccharum	Sugar Maple	1.20m H	PT	2.0m O.C.
10%	Betula papyrifera	Paper Birch	1.20m H	PT	2.0m O.C.
5%	Celtis occidentalis	Hickberry	1.20m H	PT	2.0m O.C.
5%	Ligustrum sinense	Burlemut	1.20m H	PT	2.0m O.C.
5%	Ligustrum nigra	Black Walnut	1.20m H	PT	2.0m O.C.
5%	Ostrya virginiana	Ironwood	1.20m H	PT	2.0m O.C.
2%	Populus balsamifera	Balsam Poplar	1.20m H	PT	2.0m O.C.
3%	Populus deltoides	Eastern Cottonwood	1.20m H	PT	2.0m O.C.
2%	Populus grandidentata	Largeleaf Aspen	1.20m H	PT	2.0m O.C.
3%	Populus tremuloides	Trembling Aspen	1.20m H	PT	2.0m O.C.
10%	Prunus serotina	Black Cherry	1.20m H	PT	2.0m O.C.
5%	Quercus rubra	Red Oak	1.20m H	PT	2.0m O.C.
5%	Tilia americana	Basswood	1.20m H	PT	2.0m O.C.
<b>Sandy Buffer Mix</b>					
<b>Deciduous Shrubs</b>					
10%	Amelanchier humilis	Low Shadbush	0.60m H	PT	2.0m O.C.
10%	Amelanchier canadensis	Shadbush Serviceberry	0.60m H	PT	2.0m O.C.
10%	Ceanothus americanus	New Jersey Tea	0.60m H	PT	2.0m O.C.
10%	Diervilla lonicera	Northern Bush Honeysuckle	0.60m H	PT	2.0m O.C.
10%	Prunus serotina	Black Cherry	0.60m H	PT	2.0m O.C.
10%	Rhus typhina	Staghorn Sumac	0.60m H	PT	2.0m O.C.
10%	Rhus aromatica	Fragrant Sumac	0.60m H	PT	2.0m O.C.
15%	Rosa blanda	Meadow Rose	0.60m H	PT	2.0m O.C.
10%	Symphoricarpos alba	Snowberry	0.60m H	PT	2.0m O.C.

QTY	BOTANICAL NAME	COMMON NAME	SIZE	COND	SPACING
<b>Dry Shrub Mix</b>					
<b>Deciduous Shrubs</b>					
10%	Aronia melanocarpa	Black Chokeberry	0.60m H	PT	2.0m O.C.
10%	Ceanothus americanus	New Jersey Tea	0.60m H	PT	2.0m O.C.
10%	Diervilla lonicera	Northern Bush Honeysuckle	0.60m H	PT	2.0m O.C.
10%	Physocarpus opulifolius	Common Ninebark	0.60m H	PT	2.0m O.C.
10%	Rhus typhina	Staghorn Sumac	0.60m H	PT	2.0m O.C.
10%	Rhus aromatica	Fragrant Sumac	0.60m H	PT	2.0m O.C.
10%	Rosa blanda	Meadow Rose	0.60m H	PT	2.0m O.C.
10%	Rubus occidentalis	Flowing Raspberry	0.60m H	PT	2.0m O.C.
10%	Symphoricarpos alba	Snowberry	0.60m H	PT	2.0m O.C.
<b>Wetland Shrub Mix</b>					
<b>Deciduous Shrubs</b>					
10%	Ailanthus incana ssp. rugosa	Spotted Alder	0.60m H	PT	2.0m O.C.
10%	Betula populifolia	Gray Birch	0.60m H	PT	2.0m O.C.
10%	Cephalanthus occidentalis	Buttonbush	0.60m H	PT	2.0m O.C.
5%	Cornus alternifolia	Pagoda Dogwood	0.60m H	PT	2.0m O.C.
5%	Cornus racemosa	Gray Dogwood	0.60m H	PT	2.0m O.C.
10%	Cornus sericea	Red Osier Dogwood	0.60m H	PT	2.0m O.C.
10%	Myrica gale	Sweet Gale	0.60m H	PT	2.0m O.C.
5%	Salix ericecephala	Heart-Leaved Willow	0.60m H	PT	2.0m O.C.
5%	Salix discolor	Pussy Willow	0.60m H	PT	2.0m O.C.
10%	Salix petiolaris	Slender Willow	0.60m H	PT	2.0m O.C.
10%	Spiraea alba	White Meadow Sweet	0.60m H	PT	2.0m O.C.
10%	Viburnum lentago	Nannyberry	0.60m H	PT	2.0m O.C.

KEY	QTY	BOTANICAL NAME	COMMON NAME	SIZE	COND	SPACING	NATIVE/NO-NATIVE
<b>Coniferous Trees</b>							
ABA	6	Abies balsamea	Balsam Fir	200cm H	WB	As Shown	Native
LL	9	Larix laricina	Tamarack	200cm H	WB	As Shown	Native
BS	1	Betula sp.	Black Spruce	200cm H	WB	As Shown	Native
PNS	6	Pinus strobus	Eastern White Pine	200cm H	WB	As Shown	Native
TO	9	Thuja occidentalis	Eastern White Cedar	200cm H	WB	As Shown	Native
TCS	1	Tsuga canadensis	Eastern Hemlock	200cm H	WB	As Shown	Native
<b>Deciduous Trees</b>							
ARN	5	Acer rubrum 'Northwood'	Northwood Red Maple	50mm Cal	WB	As Shown	Native
AR	6	Acer rubrum	Red Maple	50mm Cal	WB	As Shown	Native
PM	6	Populus mariana	Sugar Maple	50mm Cal	WB	As Shown	Native
AEG	2	Aesculus glabra	Ohio Buckeye	45mm Cal	WB	As Shown	Native
AXB	2	Ametanochter x grandiflora 'Balerina'	Balerina Serviceberry	50mm Cal	WB	As Shown	Native
BAL	5	Betula alleghaniensis	Yellow Birch	50mm Cal	WB	As Shown	Native
BP	3	Betula papyrifera	Paper Birch	50mm Cal	WB	As Shown	Native
COV	4	Carya ovata	Shagbark Hickory	50mm Cal	WB	As Shown	Native
CEL	6	Celtis occidentalis	Hickberry	50mm Cal	WB	As Shown	Native
GDI	7	Gymnocladia dioica var. 'Inermis Impicola'	Imperial Honeylocust	50mm Cal	WB	As Shown	Native
GDI	5	Gymnocladia dioica	Kentucky Coffee Tree	50mm Cal	WB	As Shown	Native
JN	4	Juglans nigra	Black Walnut	50mm Cal	WB	As Shown	Native
MORU	3	Morus rubra	Red Mulberry	60cm H	PT	As Shown	Native
PGD	2	Populus grandidentata	Largeleaf Aspen	40mm Cal	WB	As Shown	Native
PTR	3	Populus tremuloides	Trembling Aspen	40mm Cal	WB	As Shown	Native
PS	1	Prunus serotina	Black Cherry	50mm Cal	WB	As Shown	Native
QA	4	Quercus alba	White Oak	50mm Cal	WB	As Shown	Native
QM	6	Quercus macrocarpa	Burr Oak	50mm Cal	WB	As Shown	Native
TA	7	Tilia americana	Basswood	50mm Cal	WB	As Shown	Native
<b>Deciduous Shrubs</b>							
AVX	13	Aronia x prunifolia 'Viking'	Viking Black Chokeberry	60cm H	PT	80cm O.C.	Native
PN	26	Physocarpus opulifolius 'Nanus'	Dwarf Ninebark	60cm H	PT	100cm O.C.	Native
RAG	10	Rhus aromatica 'Gro-Low'	Gro-Low Fragrant Sumac	60cm H	PT	160cm O.C.	Native
RS	2	Rosa rugosa	Black Willow	60cm H	PT	As Shown	Native
<b>Ornamental grasses</b>							
ckf	6	Calamagrostis acutiflora 'Karl Foerster'	Karl Foerster Feather Reed Grass	1g	PT	45cm O.C.	Non-Native

Proposed Trees: Ownership	Total
Private	119
City-Owned	

### LEGEND

**3-D1** DETAIL SHEET # NOVATECH DETAIL EG L1, L2, ETC. NUMBER, SEE LIST FOR CODE

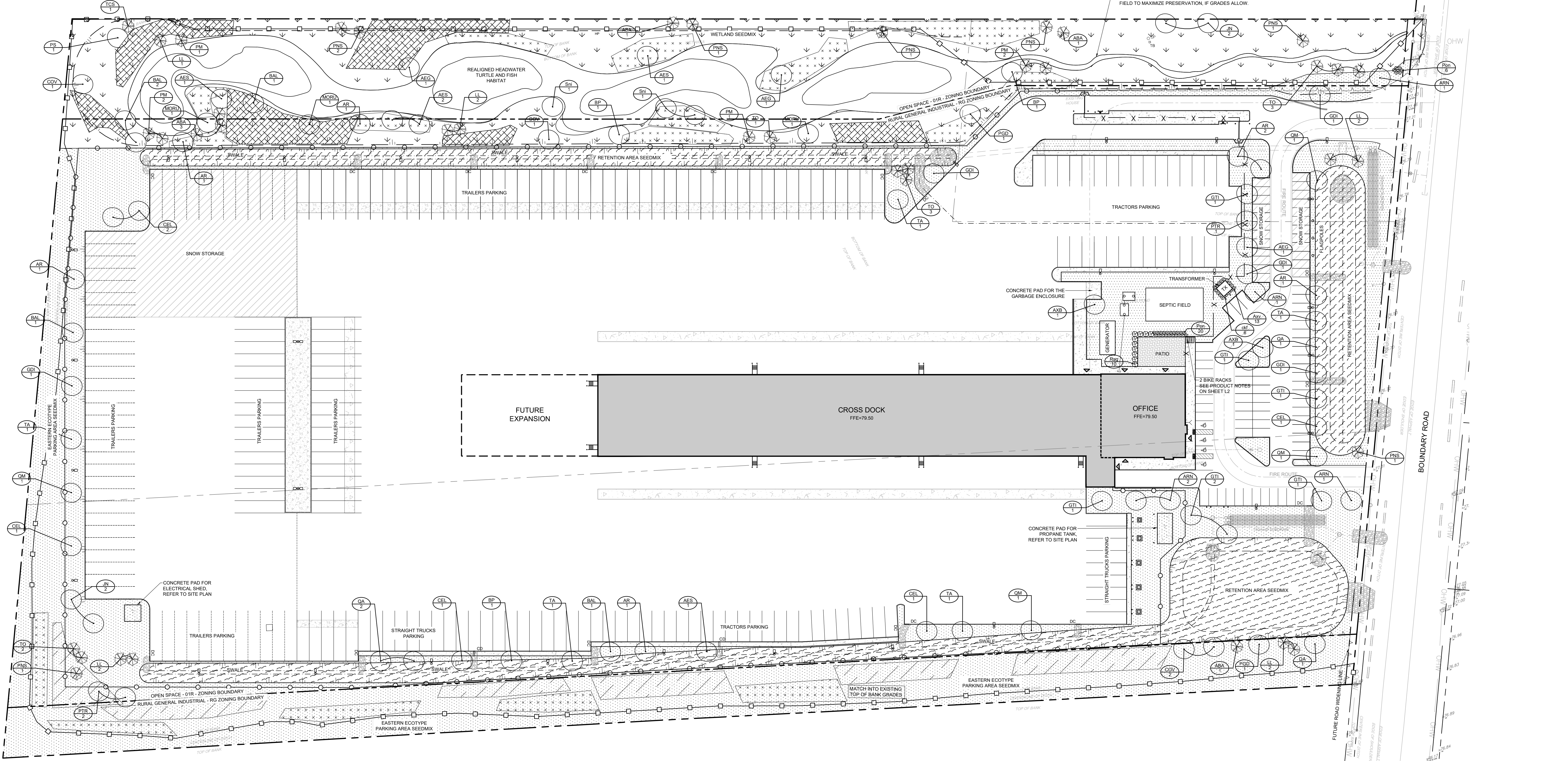
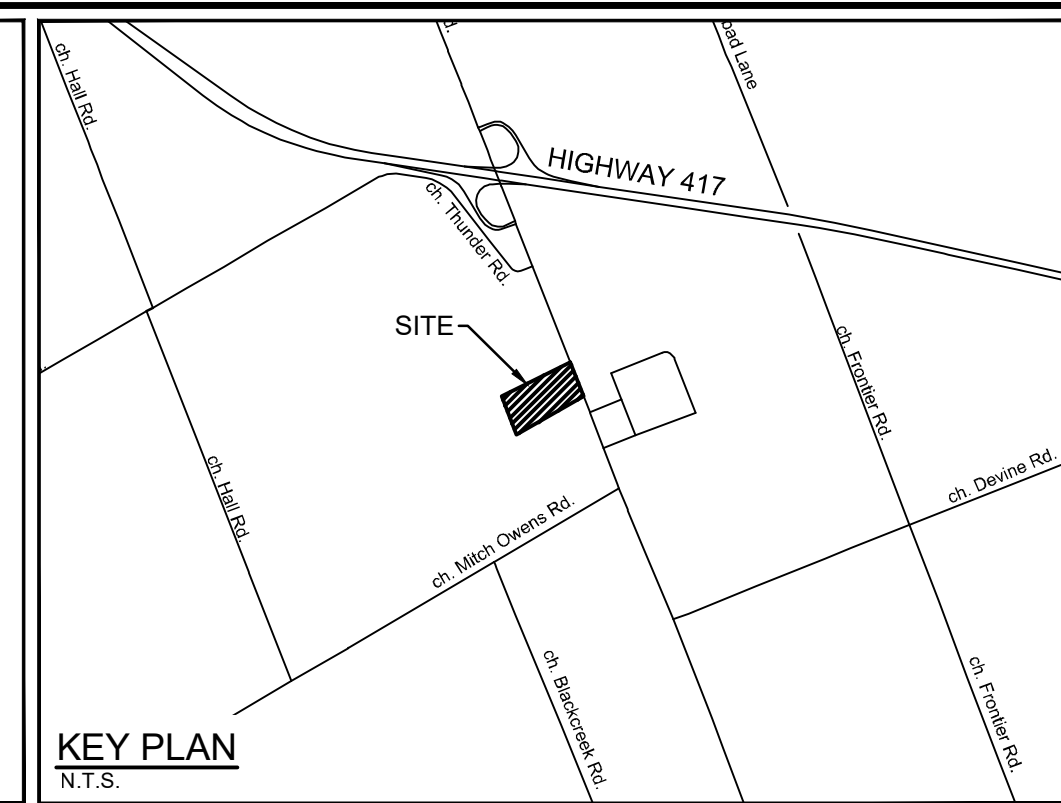
- PROPOSED CONCRETE
- PROPOSED PAVERS
- PARKING AREA SEED MIX
- RETENTION SEED MIX
- WETLAND SEED MIX
- PROPOSED SANDY BUFFER MIX
- PROPOSED WET SOILS SHRUB MIX
- PROPOSED DRY SHRUB MIX
- PROPOSED REFORESTATION
- PROPOSED SNOW STORAGE AREA

**NOVATECH DETAILS**  
Found on Sheet L2

- D1. Standard Deciduous Tree Planting
- D2. Standard Coniferous Tree Planting
- D3. Shrub and Perennial Planting
- D4. Shrub Naturalization
- D5. Reforestation in Grass
- D6. Root Wad
- D7. Basking Log
- D8. Creek Channel
- D9. Bike Layout
- D10. Turtle Fence

**CITY DETAILS**  
Related details from City of Ottawa Standard Tender Documents Volume No. 2 Standard Detail Drawings.

- F9. Chainlink Fence
- SC4. Typical Concrete Sidewalk in Boulevard
- SC5. Sidewalk Construction Joints



**NOTE:**  
THE POSITION OF ALL POLE LINES, CONDUITS, WATERMANS, SEWERS AND OTHER UNDERGROUND AND OVERGROUND UTILITIES AND STRUCTURES IS NOT NECESSARILY SHOWN ON THE CONTRACT DRAWINGS, AND WHERE SHOWN, THE ACCURACY OF THE POSITION OF SUCH UTILITIES AND STRUCTURES IS NOT GUARANTEED. BEFORE STARTING WORK, DETERMINE THE EXACT LOCATION OF ALL SUCH UTILITIES AND STRUCTURES AND ASSUME ALL LIABILITY FOR DAMAGE TO THEM.

**Owner:**  
DAY & ROSS INC.  
358 MAIN STREET  
HARTLAND,  
NB E7P 1C6

**Civil Engineer:**  
NOVATECH  
240 MICHAEL COWPLAND DRIVE, SUITE 200  
OTTAWA,  
ON K2M 1P6

**Surveyor:**  
ANNIS O'SULLIVAN,  
VOLLEBERK LTD.  
14 CONCORSE GATE  
SUITE 500, NEPEAN,  
ON K2E 7S6

**Architect:**  
N45 ARCHITECTURE INC.  
ROBERT MATTHEWS  
71 BANK STREET,  
7TH FLOOR, OTTAWA,  
ON K1P 5K2

**DISCLAIMER:**  
The elements on this plan illustrate the design intent and general constructability of the proposed landscape which will support the associated development. This is to demonstrate how the canopy cover, urban design, health, and climate change objectives of the Official Plan will be met through tree planting and site design. This drawing is for City review only and is not intended for construction. Final detailed design and construction documentation is to be provided with certified 'Issued for Construction' drawings and specifications prior to construction.

No.	REVISION	DATE	BY
6.	REVISED PER CITY AND SNCA COMMENTS	NOV 14/25	SC
5.	ISSUED FOR COMPLETENESS COMMENTS	FEB 27/25	SC
4.	ISSUED FOR BUILDING PERMIT	OCT 24/24	RGJ
3.	ISSUED FOR 90% SUBMISSION	OCT 4/24	RGJ
2.	ISSUED FOR SITE PLAN APPLICATION	OCT 2/24	RGJ
1.	ISSUED FOR 60% SUBMISSION	AUG 16/24	RGJ

SCALE: 1:500

FOR REVIEW ONLY

KEW  
RGJ  
KEW/TB  
SC

NOV 14, 2025

**NOVATECH**  
Engineers, Planners & Landscape Architects  
Suite 200, 240 Michael Cowpland Drive  
Ottawa, Ontario, Canada K2M 1P6

Telephone: (613) 254-9643  
Facsimile: (613) 254-5867  
Website: www.novatech-eng.com

LOCATION  
CITY OF OTTAWA  
5494-5510 BOUNDARY ROAD

DRAWING NAME  
LANDSCAPE PLAN

PROJECT NO.: 118168  
REV # 6  
DRAWING NO.: 118168-L