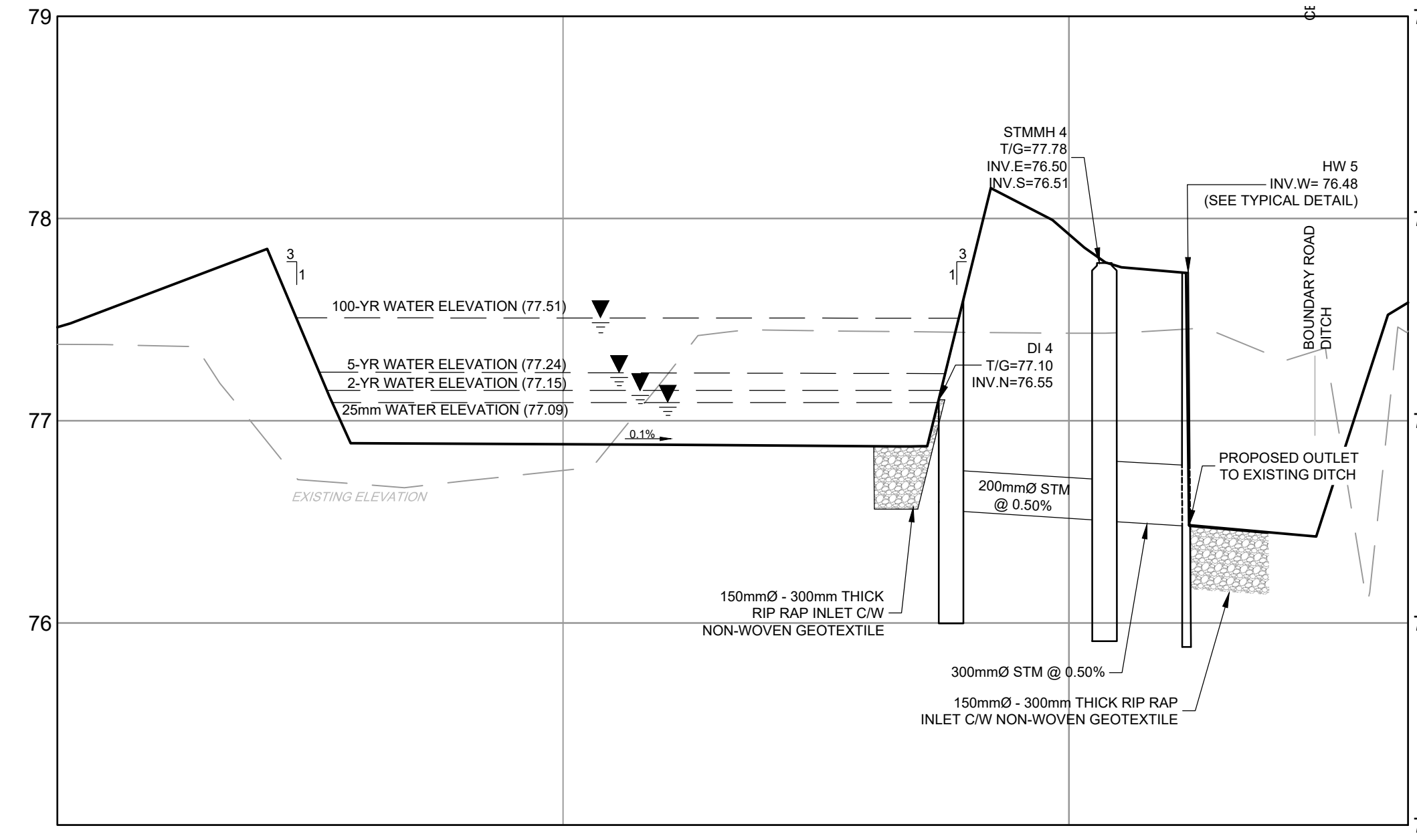
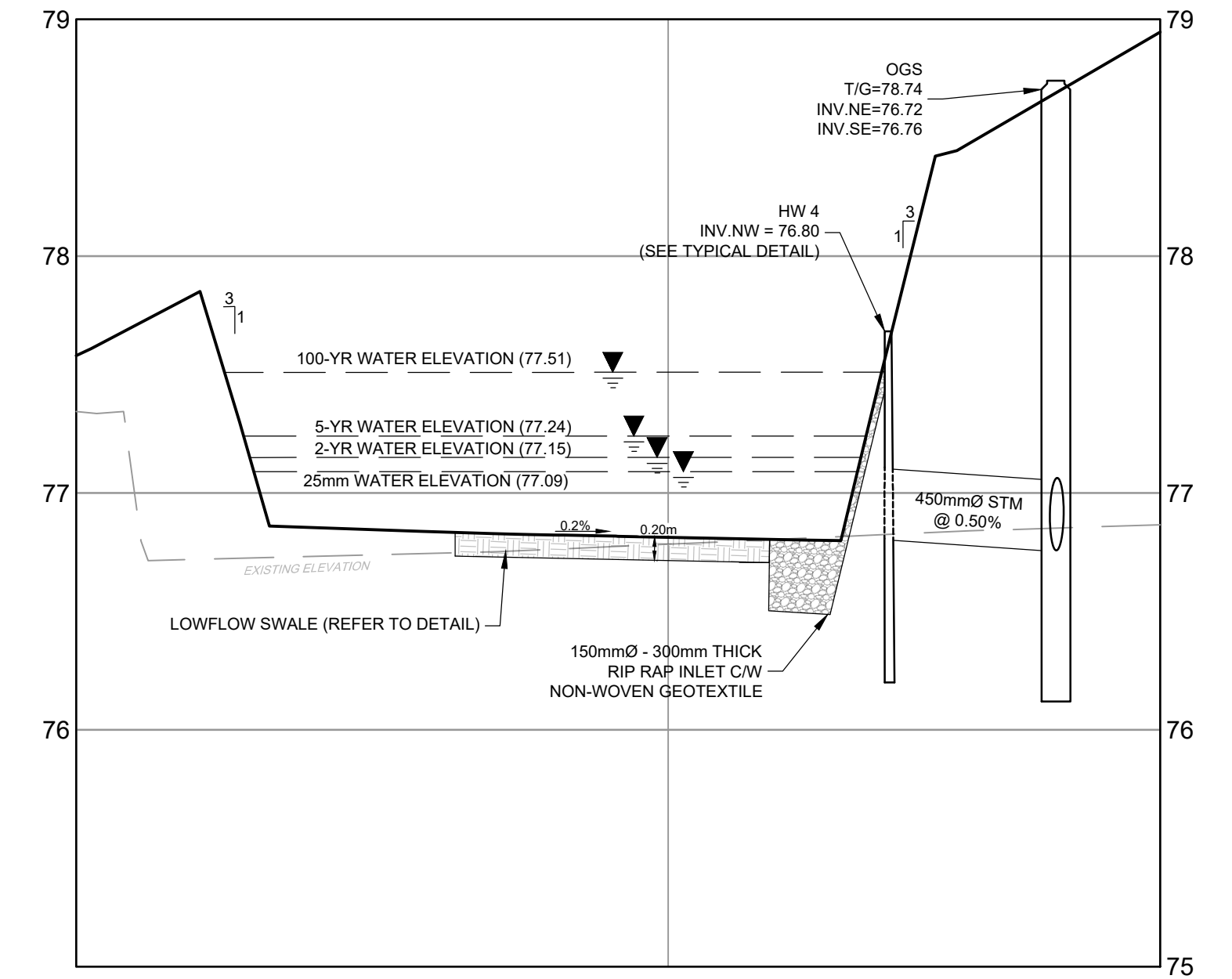


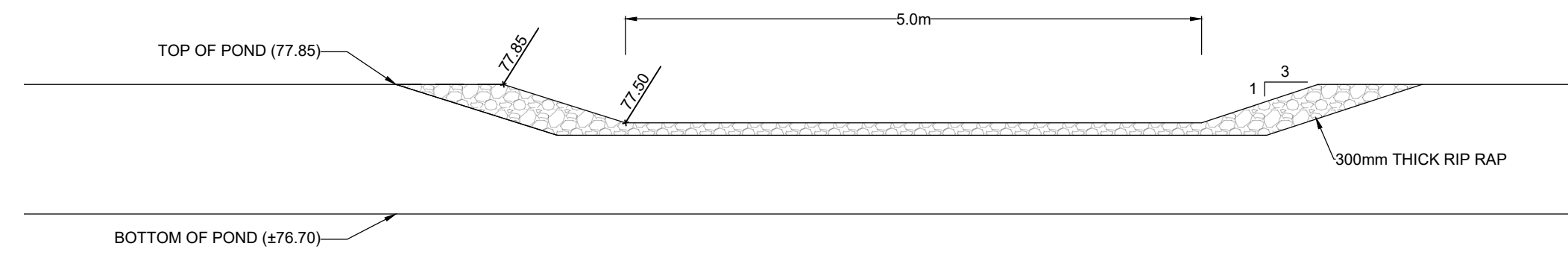
SOUTH POND PLAN VIEW  
SCALE: 1:250



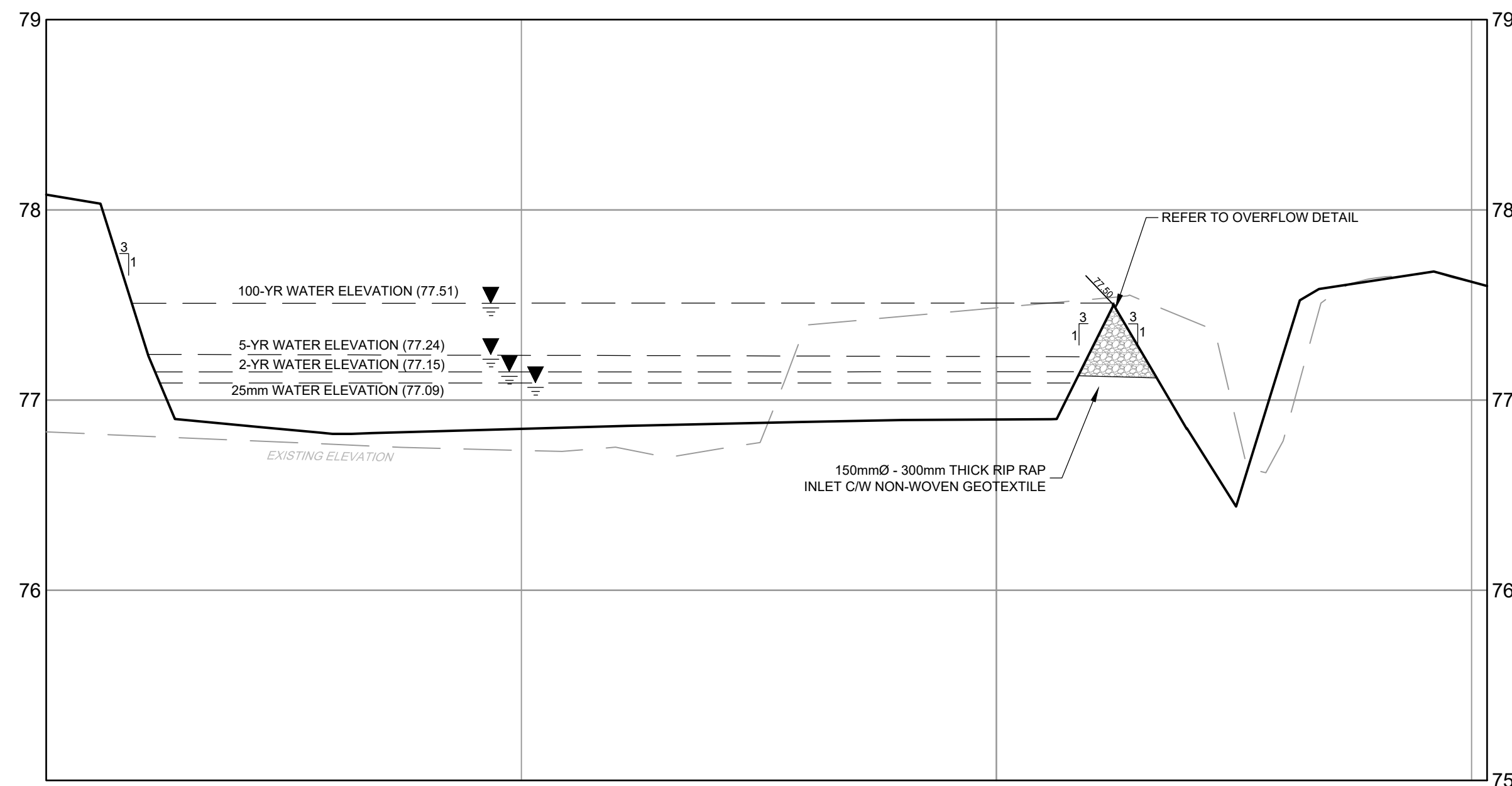
POND CROSS SECTION DETAIL F-F  
SCALE: 1:250 HORIZONTAL  
1:25 VERTICAL



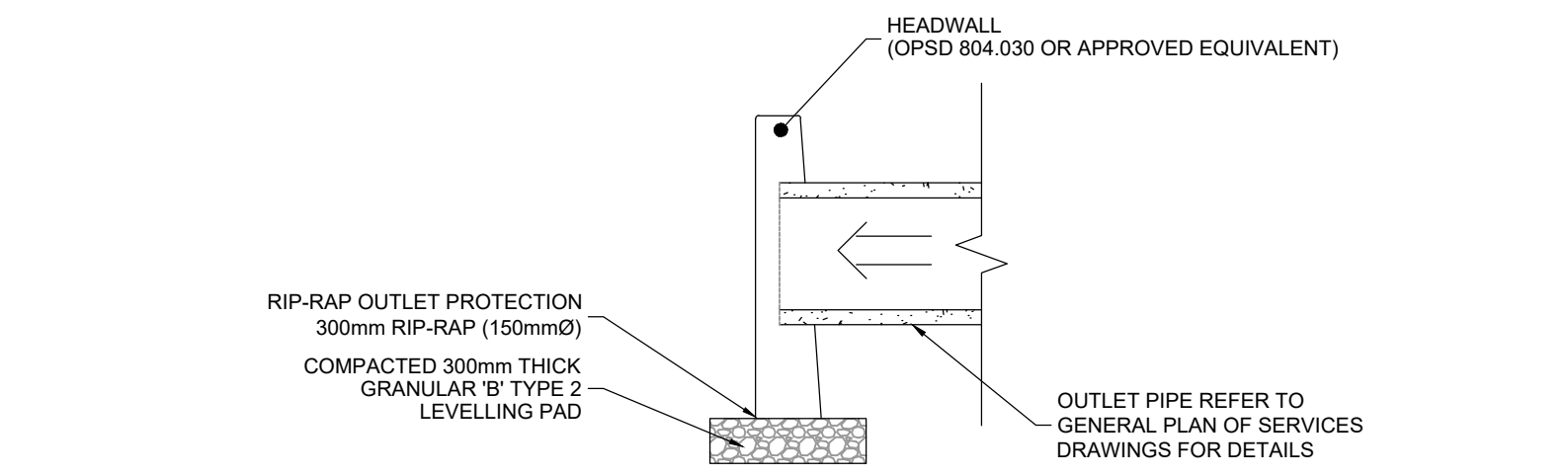
POND CROSS SECTION DETAIL G-G  
SCALE: 1:250 HORIZONTAL  
1:25 VERTICAL



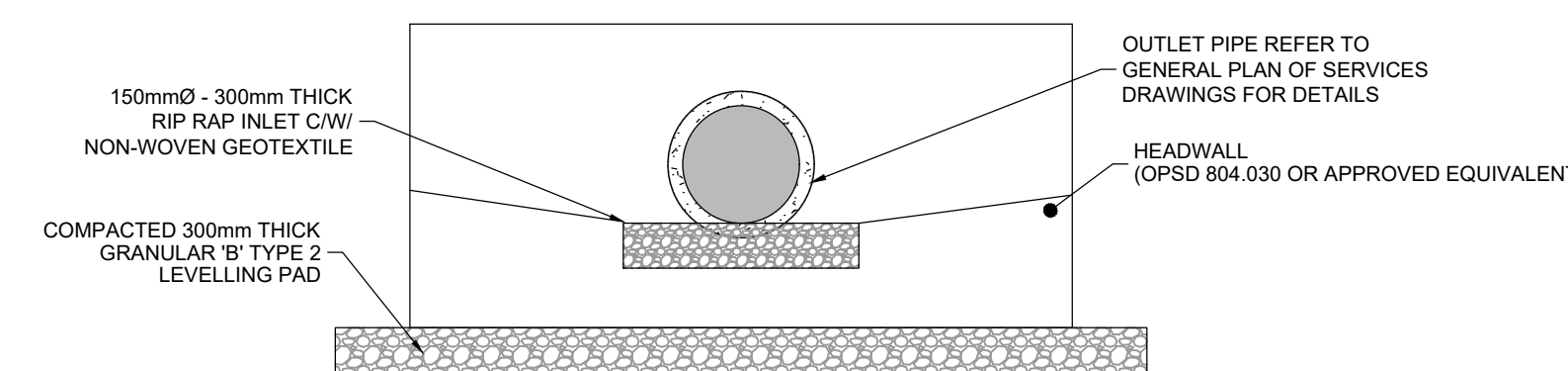
TYPICAL POND EMERGENCY OVERFLOW WIER  
SCALE: N.T.S.



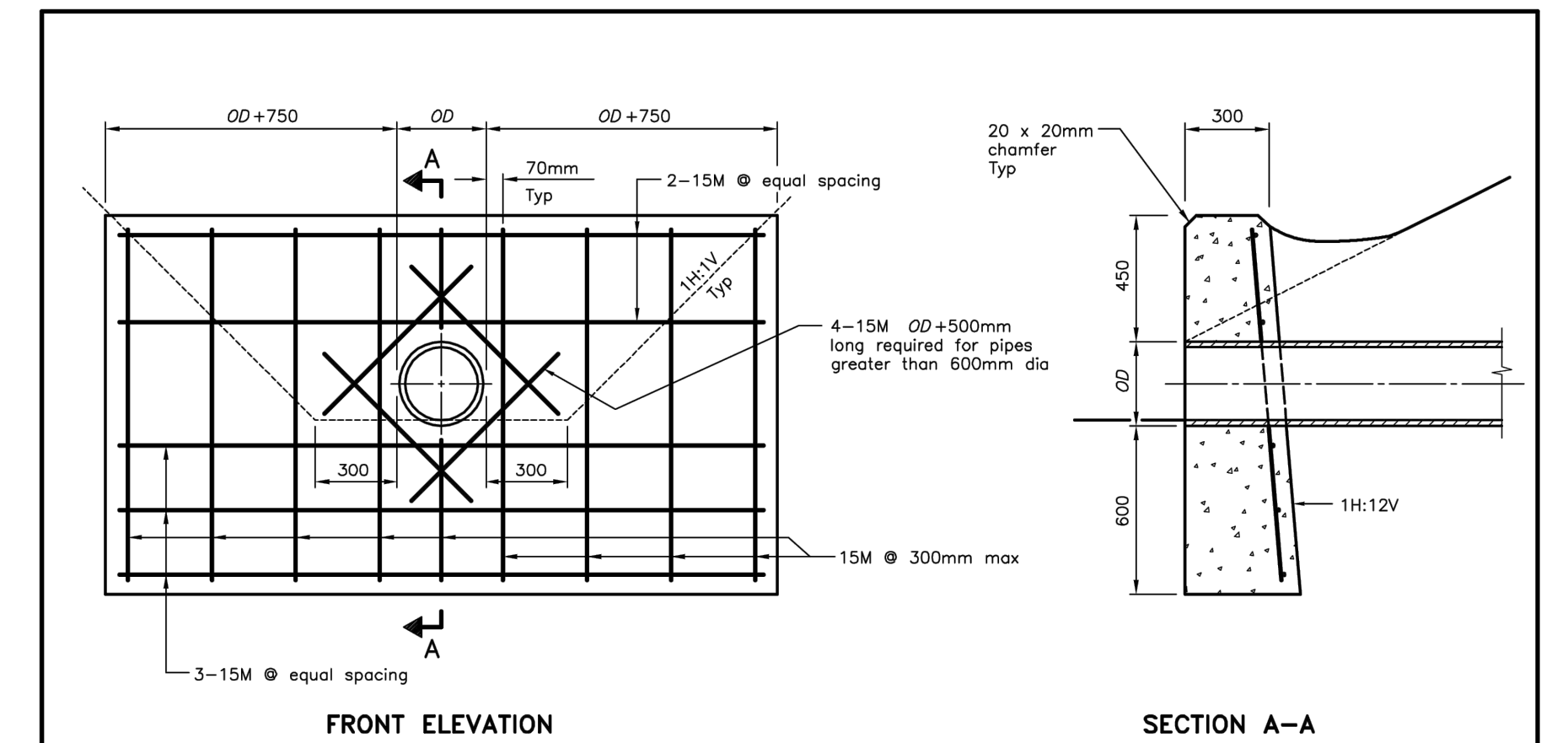
POND CROSS SECTION DETAIL I-I  
SCALE: 1:250 HORIZONTAL  
1:25 VERTICAL



TYPICAL POND OUTLET HEADWALL DETAIL - PROFILE  
SCALE: N.T.S.



TYPICAL POND OUTLET HEADWALL DETAIL - ELEVATION  
SCALE: N.T.S.



LEGEND:  
OD = Outside diameter of pipe

NOTES:  
A This OPSD to be read in conjunction with OPSD 3940.150.  
B If a steel grate is required, refer to OPSD 804.05.  
C Class of concrete: 30MPa.  
D Cover to reinforcing bars 70mm ± 20mm.  
E All dimensions are in millimetres unless otherwise shown.

ONTARIO PROVINCIAL STANDARD DRAWING		Nov 2017	Rev 2
<b>CONCRETE HEADWALL</b>			
FOR PIPE LESS THAN 900mm DIAMETER			
<b>OPSD 804.030</b>			

C:\Users\118168\OneDrive\118168\DWG\_82952026\_3.37.Plot\_118168.DWG

NOTE:  
THE POSITION OF ALL POLE LINES, CONDUITS, WATERMANS, SEWERS AND OTHER UNDERGROUND AND OVERGROUND UTILITIES AND STRUCTURES IS NOT NECESSARILY SHOWN ON THE CONTRACT DRAWINGS, AND WHERE SHOWN, THE ACCURACY OF THE POSITION OF SUCH UTILITIES AND STRUCTURES IS NOT GUARANTEED. BEFORE STARTING WORK, DETERMINE THE EXACT LOCATION OF ALL SUCH UTILITIES AND STRUCTURES AND ASSUME ALL LIABILITY FOR DAMAGE TO THEM.

**APPROVED**  
By Adam Brown at 4:13 pm, Jun 30, 2026

No.	REVISION	DATE	BY
4.	REVISED PER SNCA COMMENTS	MAY 28/2026	MJH
3.	REVISED PER SNCA COMMENTS	APR 24/2026	MJH
2.	REVISED PER CITY COMMENTS	FEB 20/2026	MJH
1.	REVISED PER CITY AND SNCA COMMENTS	NOV 14/2025	MJH

SCALE	DESIGN	FOR REVIEW ONLY	
AS SHOWN	MJH		
	CHECKED		
	JLS		
	DRAWN		
	MJH		
	CHECKED		
	JLS		
	APPROVED		
	MJH		

 Engineers, Planners & Landscape Architects Suite 200, 240 Michael Copland Drive Ottawa, Ontario, Canada K2M 1P6 Telephone: (613) 254-9643 Facsimile: (613) 254-5867 Website: www.novatech-eng.com	LOCATION CITY OF OTTAWA 6510 BOUNDARY ROAD DRAWING NAME NOTES AND DETAILS	PROJECT No. 118168 REV # 4 DRAWING No. 118168-PND1
	118168-PND1 PLAN # 19296	