

G. Wildman

GERALDINE WILDMAN
MANAGER, DEVELOPMENT REVIEW SOUTH
PLANNING, DEVELOPMENT AND BUILDING SERVICES
DEPARTMENT, CITY OF OTTAWA

APPROVED
By wildmange at 10:49 am, Feb 18, 2026

Q4A
ARCHITECTS

Q4 ARCHITECTS INC.

4110 Yonge Street
Suite 602, Toronto ON
M2P 2B7

T 416.322.6334
F 416.322.7294
E info@q4architects.com



The contractor / builder must verify all dimensions on the job and report any discrepancy to the designer before proceeding with the work. Drawings are NOT to be scaled. All drawings and specifications are instruments of service and the copyright property of the designer and must be returned upon request.

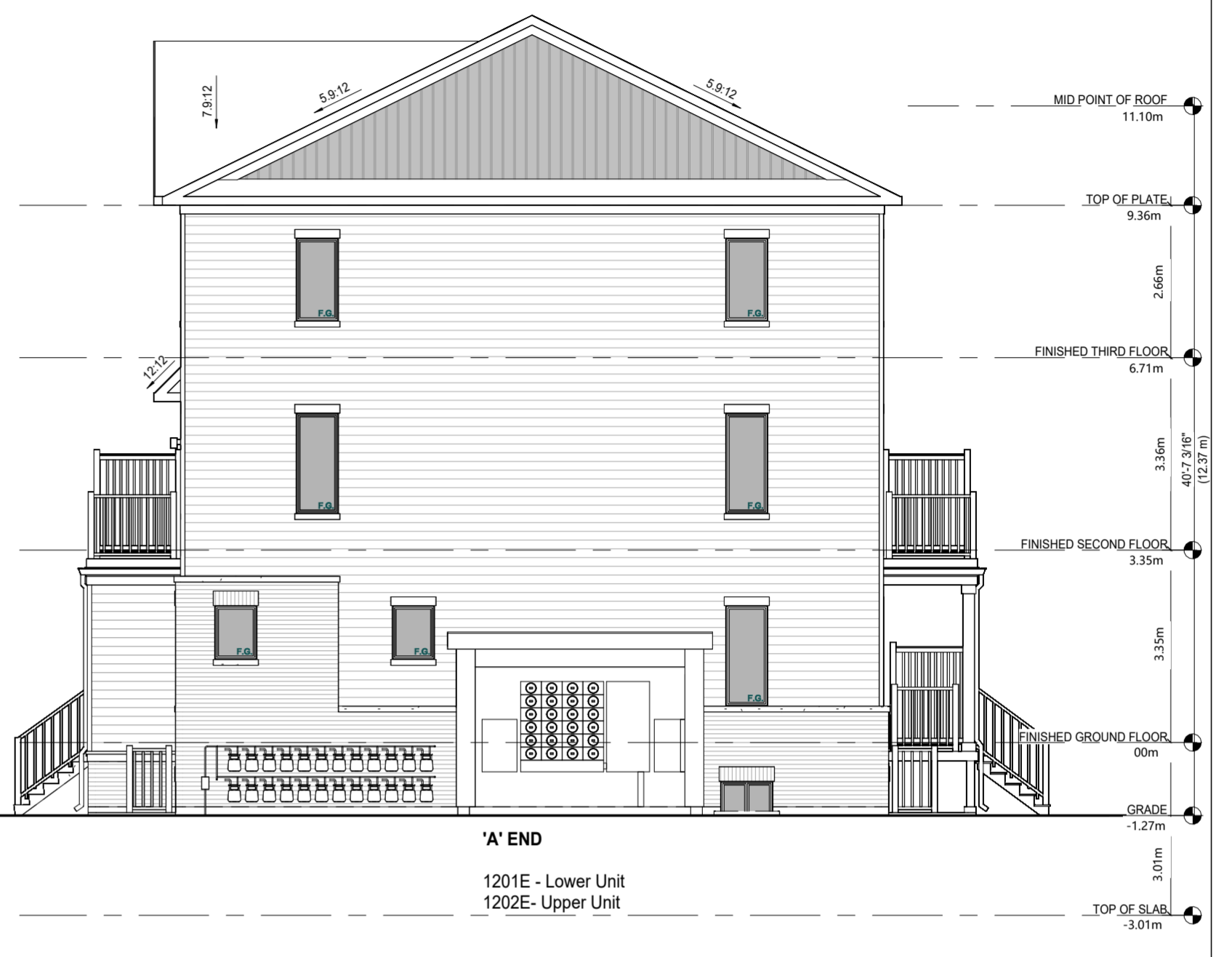
Q4 Architects Inc. retains the copyright in all drawings, plans, sketches, and all digital information. They may not be copied or used for any other projects or purposes or distributed without the written consent of Q4 Architects Inc.

NOTES:

- Block elevations are to vary between Option 1 and Option 2.
- Blocks that front public ROW (Les Emerson, Mineral and Conservancy Dr) will have a Typical front elevations with Upgraded rear elevations varying between blocks with Option 1 and Option 2.
- Blocks 2, 5, 6 and will have both Typical front and rear elevations. Elevation style to vary between blocks.



1 24 UNIT BLOCK - FRONT ELEVATION - OPTION 1 (CORNER UPGRADE)
1:96



4 24 UNIT BLOCK - RIGHT ELEVATION - OPTION 1
1:96



2 24 UNIT BLOCK - REAR ELEVATION - OPTION 1 (CORNER UPGRADE)
1:96



3 24 UNIT BLOCK - LEFT ELEVATION - OPTION 1
1:96

2	STAMPED SPI - CITY RE-SUBMISSION	2026.01.12
1	SPI - CITY SUBMISSION	2024.10.02

PLAN NO. 18754
DEV. NO. D07-12-24-0097

OAST Stacked Towns
CONSERVANCY STACKED TOWNS

Part of Lot 14, Concession r (Rideau Front),
Geographic Township of Nepean

Ottawa, ON
3285 Borrisokane Rd.
OTTAWA, ON.

CAIVAN

Project No. **24006**
Scale **1:96**
Drawn By **JM**
Checked By **SW**

ELEVATIONS

C:\Users\swatkin\Documents\OAST Stacked Towns\Block_24 Units\work\FW24W.rvt 2024-09-06 2:25:58 PM

Q4 ARCHITECTS INC.

4110 Yonge Street
Suite 602, Toronto ON
M2P 2B7

T 416.322.6334
F 416.322.7294
E info@q4architects.com



The contractor / builder must verify all dimensions on the job and report any discrepancy to the designer before proceeding with the work. Drawings are NOT to be scaled. All drawings and specifications are instruments of service and the copyright property of the designer and must be returned upon request.

Q4 Architects Inc. retains the copyright in all drawings, plans, sketches, and all digital information. They may not be copied or used for any other projects or purposes or distributed without the written consent of Q4 Architects Inc.

NOTES:

Block elevations are to vary between blocks with the provided two options Option 1 and Option 2.

Blocks that front public ROW (Les Emmerson, Mineral and Conservancy Dr) will have a Typical front elevations with Upgraded rear elevations varying between blocks with Option 1 and Option 2.

Blocks 2, 5, 6 and will have both Typical front and rear elevations. Elevation style to vary between blocks.

G. Wildman
GERALDINE WILDMAN
MANAGER, DEVELOPMENT REVIEW SOUTH
PLANNING, DEVELOPMENT AND BUILDING SERVICES
DEPARTMENT, CITY OF OTTAWA

APPROVED
By wildmange at 10:48 am, Feb 18, 2026



③ 24 UNIT BLOCK - UPGRADE RIGHT ELEVATION
1:96

① 24 UNIT BLOCK - UPGRADE REAR ELEVATION OPTION 1 (CORNER UPGRADE)
1:96

2	STAMPED SPI- CITY RE-SUBMISSION	2026.01.12
1	SPI- CITY SUBMISSION	2024.10.02

PLAN NO. 18754
DEV. NO. D07-12-24-0097

**OAST Stacked Towns
CONSERVANCY
STACKED TOWNS**

Part of Lot 14, Concession r (Rideau Front),
Geographic Township of Nepean

Ottawa, ON
3285 Borrisokane Rd.
OTTAWA, ON.

CAIVAN

Project No.	24006
Scale	1:96
Drawn By	JM
Checked By	SW

ELEVATIONS

G. Wildman

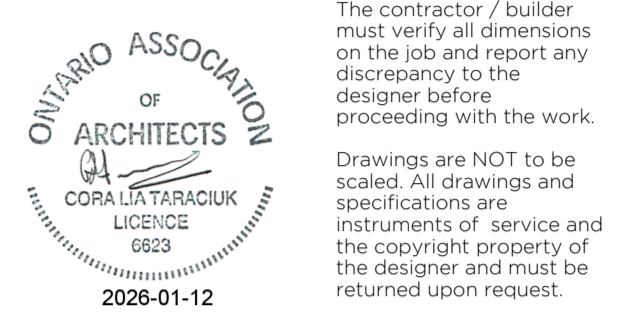
GERALDINE WILDMAN
MANAGER, DEVELOPMENT REVIEW SOUTH
PLANNING, DEVELOPMENT AND BUILDING SERVICES
DEPARTMENT, CITY OF OTTAWA

APPROVED
By wildmange at 10:48 am, Feb 18, 2026

Q4 ARCHITECTS INC.

4110 Yonge Street
 Suite 602, Toronto ON
 M2P 2B7

T: 416.322.6334
 F: 416.322.7294
 E: info@q4architects.com



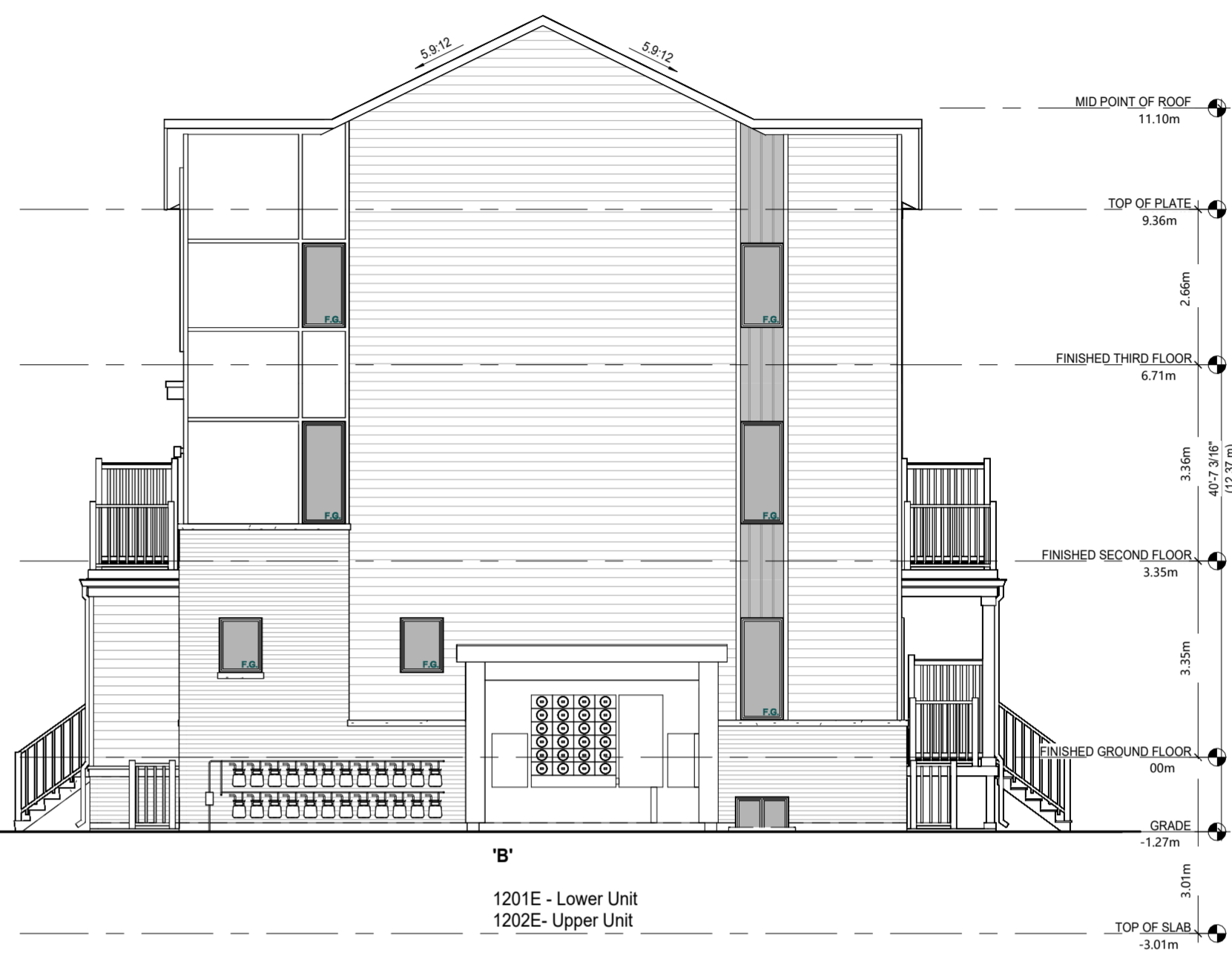
Q4 Architects Inc. retains the copyright in all drawings, plans, sketches, and all digital information. They may not be copied or used for any other projects or purposes or distributed without the written consent of Q4 Architects Inc.

NOTES:

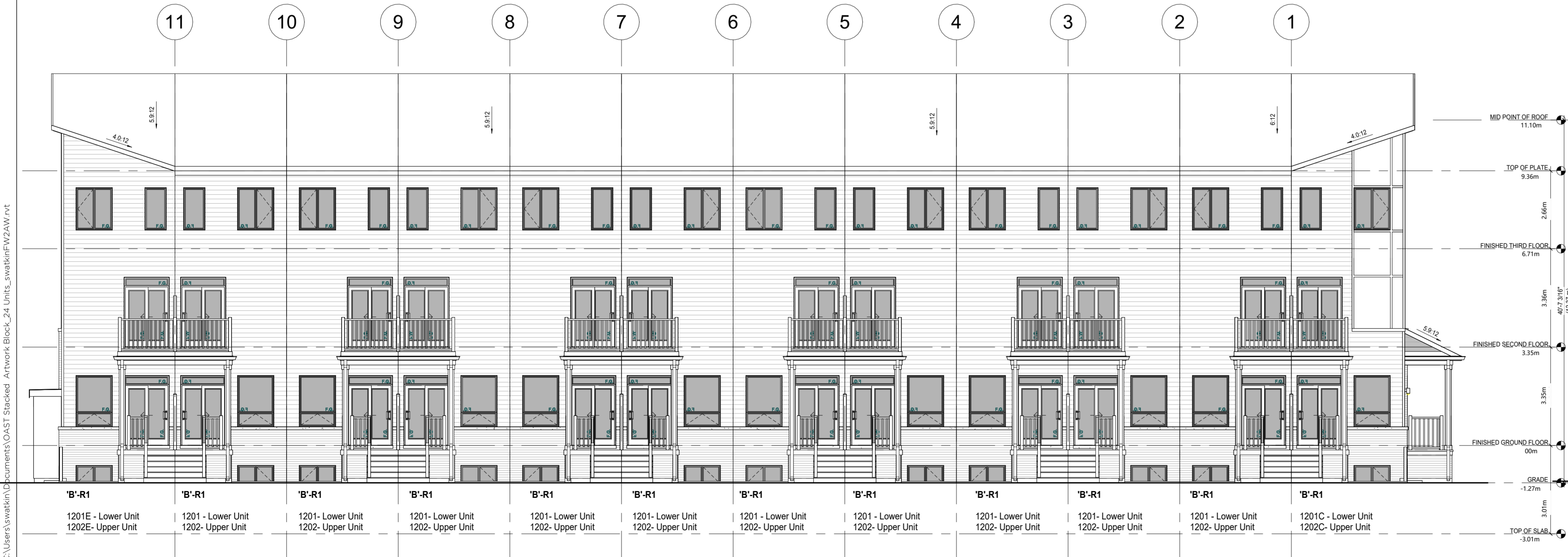
- Block elevations are to vary between blocks with the provided two options Option 1 and Option 2.
- Blocks that front public ROW (Les Emmerson, Mineral and Conservancy Dr) will have a Typical front elevations with Upgraded rear elevations varying between blocks with Option 1 and Option 2.
- Blocks 2, 5, 6 and will have both Typical front and rear elevations. Elevation style to vary between blocks.



1 24 UNIT BLOCK - FRONT ELEVATION - OPTION 2 (CORNER UPGRADE)
 1:96



4 24 UNIT BLOCK - RIGHT ELEVATION
 1:96



2 24 UNIT BLOCK - REAR ELEVATION - OPTION 2 (CORNER UPGRADE)
 1:96



3 24 UNIT BLOCK - LEFT ELEVATION
 1:96

2	STAMPED SPI- CITY RE-SUBMISSION	2026.01.12
1	SPI- CITY SUBMISSION	2024.10.02

PLAN NO. 18754
 DEV. NO. D07-12-24-0097

OAST Stacked Towns
CONSERVANCY STACKED TOWNS

Part of Lot 14, Concession r (Rideau Front),
 Geographic Township of Nepean

Ottawa, ON
 3285 Borrisokane Rd.
 OTTAWA, ON.

CAIVAN

Project No. **24006**
 Scale **1:96**
 Drawn By **JM**
 Checked By **SW**

ELEVATIONS

2024-09-06 2:56:48 C:\Users\swatkin\Documents\OAST Stacked Towns\Block_24 Units\swatkin\FW24W.rvt

G. Wildman

GERALDINE WILDMAN
MANAGER, DEVELOPMENT REVIEW SOUTH
PLANNING, DEVELOPMENT AND BUILDING SERVICES
DEPARTMENT, CITY OF OTTAWA

APPROVED
By wildmange at 10:48 am, Feb 18, 2026

Q4 ARCHITECTS INC.

4110 Yonge Street
Suite 602, Toronto ON
M2P 2B7

T 416.322.6334
F 416.322.7294
E info@q4architects.com

The contractor / builder must verify all dimensions on the job and report any discrepancy to the designer before proceeding with the work. Drawings are NOT to be scaled. All drawings and specifications are instruments of service and the copyright property of the designer and must be returned upon request.

Q4 Architects Inc. retains the copyright in all drawings, plans, sketches, and all digital information. They may not be copied or used for any other projects or purposes or distributed without the written consent of Q4 Architects Inc.

NOTES:

Block elevations are to vary between blocks with the provided two options Option 1 and Option 2.

Blocks that front public ROW (Les Emmerson, Mineral and Conservancy Dr) will have a Typical front elevations with Upgraded rear elevations varying between blocks with Option 1 and Option 2.

Blocks 2, 5, 6 and will have both Typical front and rear elevations. Elevation style to vary between blocks.



③ 24 UNIT BLOCK - UPGRADE RIGHT ELEVATION
1:96

② 24 UNIT BLOCK - UPGRADE REAR ELEVATION - OPTION 2 (CORNER UPGRADE)
1:96

2 | STAMPED SPL - CITY RE-SUBMISSION | 2026.01.12
1 | SPL - CITY SUBMISSION | 2024.10.02

PLAN NO. 18754
DEV. NO. D07-12-24-0097

OAST Stacked Towns
CONSERVANCY
STACKED TOWNS

Part of Lot 14, Concession r (Rideau Front),
Geographic Township of Nepean

Ottawa, ON
3285 Borrisokane Rd.
OTTAWA, ON.

CAIVAN

Project No. 24006
Scale 1:96
Drawn By JM
Checked By SW

ELEVATIONS