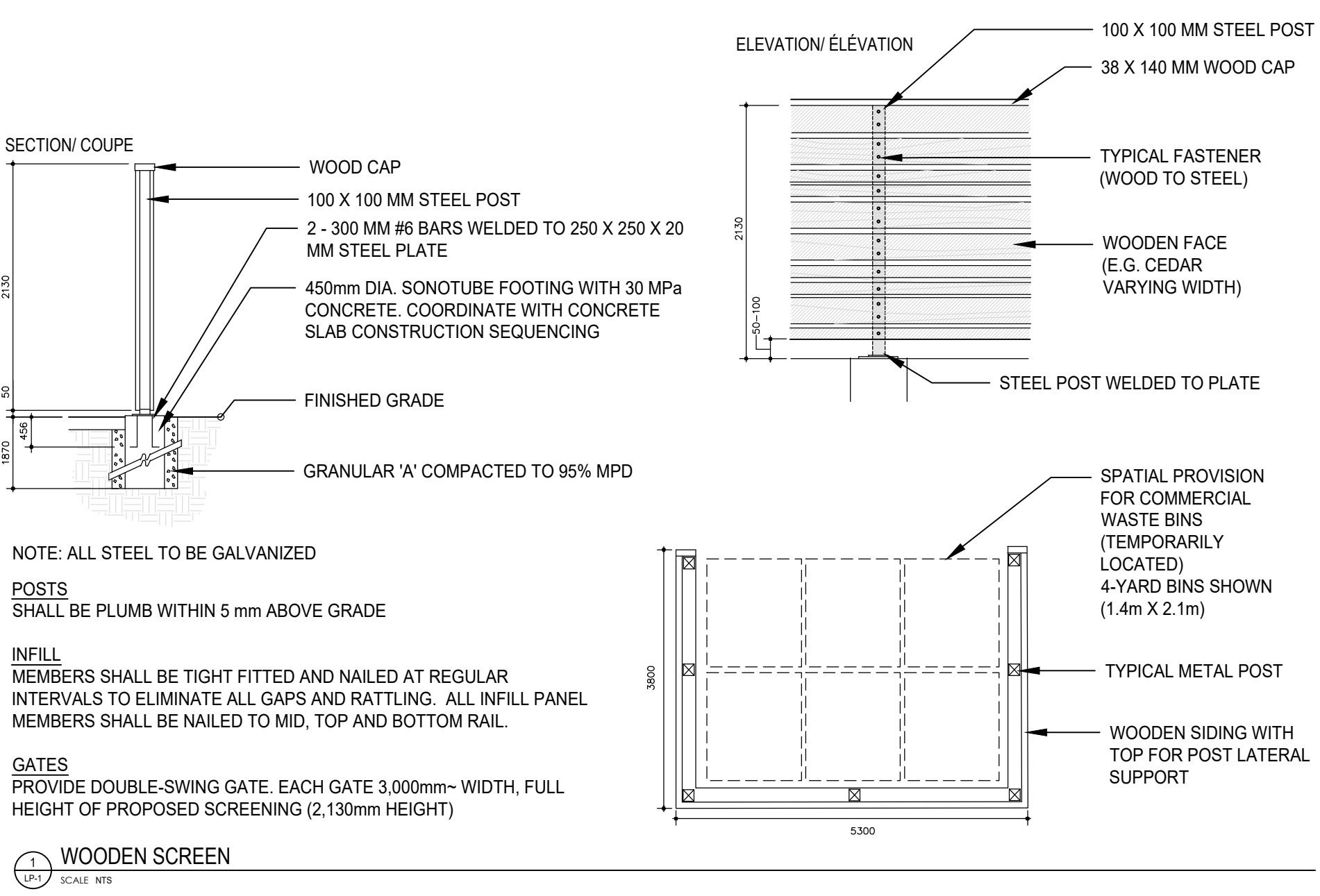
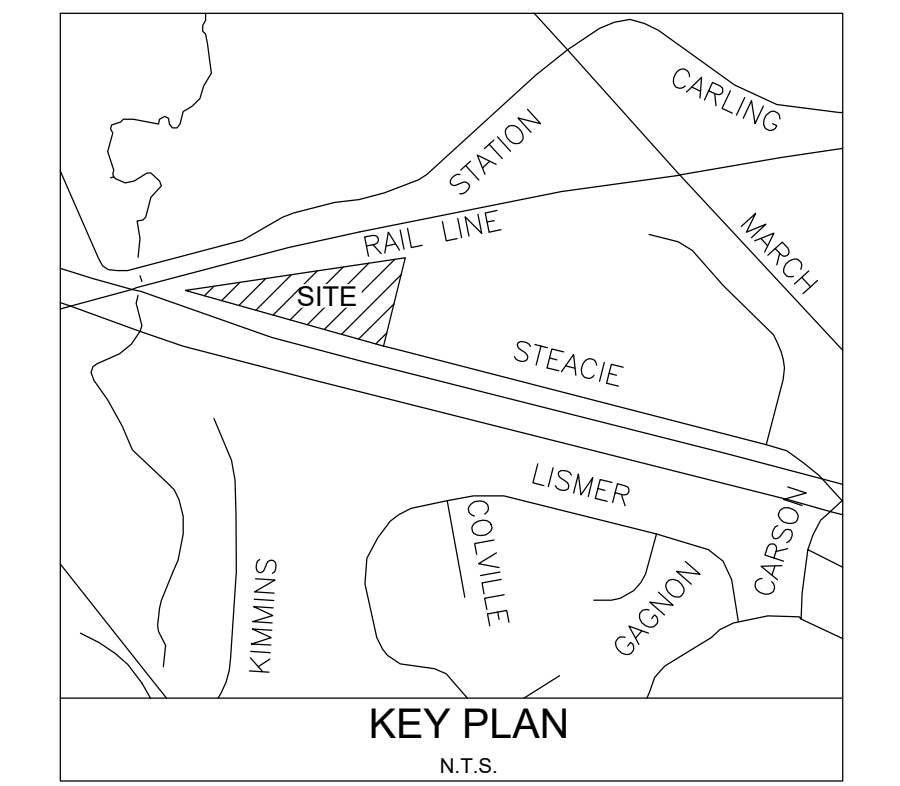


PREPARED FOR:

PREPARED BY:

KEY MAP



### CONTRIBUTION TO CANOPY COVER

TOTAL SITE AREA (LIMIT OF PROJECT DISTURBANCE)	16,733.50 sq.m.
CANOPY COVER (EXISTING)	REFER TO TCR
POSSIBLE CANOPY COVER (OF NEW PLANTINGS)	8,996 sq.m.
POSSIBLE CANOPY COVER AS PERCENTAGE OF SITE	53.8%

\* CALCULATION EXCLUDES ANY OVERLAP ON CANOPIES AND BUILDINGS.  
 \* 5M RADIUS IS PROJECTED FOR CONIFEROUS TREES  
 \* 7M RADIUS IS PROJECTED FOR DECIDUOUS TREES

### SOIL VOLUME AND CONDITION NOTE

ALL TREES AND SHRUBS PROPOSED WILL BE PLANTED ON DISTURBED SOILS AS PER RELEVANT CITY STANDARDS FOR PLANTINGS INCLUDING L2, L14, L16, L18, L-19 AS PER DETAIL SHEET LD-1.

NO TREES ARE PROPOSED ON STRUCTURE. ALL TREES SHALL BE MINIMUM 1.5M OFFSET ADJACENT CURB OR PAVEMENT/STRUCTURE EDGE.

- ### SITE DEVELOPMENT NOTES
- THERE ARE NO PROPOSED OR NOTED UNSTABLE SLOPES WITHIN THE LIMITS OF SITE LANDSCAPE DEVELOPMENT.
  - REFER TO CIVIL DRAWINGS FOR ALL GRADING AND UTILITY/SERVICING INFORMATION.
  - THE EXISTING WATERCOURSE (CREEK) AT THE NORTH-WEST EDGE OF DEVELOPMENT AREA IS SHOWN FOR INFORMATION. PROXIMATE TO KITIGAN GROVE, SOUTH OF STATION ROAD AND THE RAIL CORRIDOR.
  - RELEVANT OFFSETS AND EASEMENTS ARE SHOWN WHERE/AS APPLICABLE. REFER ALSO TO ARCHITECTURAL SITE PLAN FOR COMPLETE LEGAL AND EASEMENT INFORMATION.
  - REFER TO GEOTECHNICAL ENGINEERING REPORT DATED MAY 2026. SENSITIVE MARINE CLAY SOILS POLICY DOES NOT APPLY TO THE PROPOSED SEGMENTAL BLOCK WALL. A TYPICAL LANDSCAPING SETBACK OF 1.2 METERS IS PROPOSED FOR ALL TREE PLANTINGS NEAR FEATURE LANDSCAPE/RETAINING WALLS.
  - ALL PLANTINGS SHALL BE MINIMUM 2.5M FROM NEAREST LIGHT POLE.

### PLANT LIST - WHIP NATURALIZATION

#### DECIDUOUS TREES

KEY	QTY.	BOTANICAL NAME	COMMON NAME	SIZE	CONDITION	NOTE
r-AR	50	<i>Acer rubrum</i>	Red Maple	1.5m H	WHIPNATIVE	CITY STD. L18
r-BP	35	<i>Betula papyrifera</i>	Paper Birch	1.5m H	WHIPNATIVE	CITY STD. L18
r-CA	30	<i>Carya ovata</i>	Shagbark Hickory	1.5m H	WHIPNATIVE	CITY STD. L18
r-CO	60	<i>Celtis occidentalis</i>	Common Hackberry	1.5m H	WHIPNATIVE	CITY STD. L18
r-CM	30	<i>Crataegus mollis</i>	Red Hawthorn	1.5m H	WHIPNATIVE	CITY STD. L18
r-QM	30	<i>Quercus macrocarpa</i>	Burr Oak	1.5m H	WHIPNATIVE	CITY STD. L18
r-QR	45	<i>Quercus rubra</i>	Red Oak	1.5m H	WHIPNATIVE	CITY STD. L18
r-SD	40	<i>Sorbus discolor</i>	Showy Mountain Ash	1.5m H	WHIPNATIVE	CITY STD. L18
r-TA	45	<i>Tilia americana</i>	American Basswood	1.5m H	WHIPNATIVE	CITY STD. L18

#### CONIFEROUS TREES

KEY	QTY.	BOTANICAL NAME	COMMON NAME	SIZE	CONDITION	NOTE
r-LL	10	<i>Larix laricina</i>	Common Larch	1.5m H	WHIPNATIVE	CITY STD. L18
r-PG	8	<i>Pinus glauca</i>	White Spruce	1.5m H	WHIPNATIVE	CITY STD. L18
r-PS	15	<i>Pinus strobus</i>	White Pine	1.5m H	WHIPNATIVE	CITY STD. L18

#### DECIDUOUS SHRUBS

KEY	QTY.	BOTANICAL NAME	COMMON NAME	SIZE	CONDITION	NOTE
r-AnA	20	<i>Amelanchier alnifolia</i>	Saskatoon Serviceberry	1.5m H	WHIPNATIVE	CITY STD. L18
r-AM	30	<i>Aronia melanocarpa</i>	Native Chokeberry	1.5m H	WHIPNATIVE	CITY STD. L18
r-SB	35	<i>Salix discolor</i>	Pussy Willow	1.5m H	WHIPNATIVE	CITY STD. L18
r-VIT	40	<i>Viburnum trilobum</i>	Highbush Cranberry	1.5m H	WHIPNATIVE	CITY STD. L18

#### CONIFEROUS SHRUBS

KEY	QTY.	BOTANICAL NAME	COMMON NAME	SIZE	CONDITION	NOTE
r-JuH	20	<i>Juniperus horizontalis</i>	Savin Juniper	1.5m H	WHIPNATIVE	CITY STD. L18
r-TaC	15	<i>Taxus canadensis</i>	Canadian Yew	1.5m H	WHIPNATIVE	CITY STD. L18

### PLANT LIST

#### DECIDUOUS SHADE TREES

KEY	QTY.	BOTANICAL NAME	COMMON NAME	SIZE	NOTE	CONDITION
AR	12	<i>Acer rubrum</i>	Red Maple	50mm cal.	NATIVE, SPACING PER PLAN	B.B. or W.B.
BP	11	<i>Betula papyrifera</i>	Paper Birch	50mm cal.	NATIVE, SPACING PER PLAN	B.B. or W.B.
CA	12	<i>Carya ovata</i>	Shagbark Hickory	50mm cal.	NATIVE, SPACING PER PLAN	B.B. or W.B.
CO	7	<i>Celtis occidentalis</i>	Common Hackberry	50mm cal.	NATIVE, SPACING PER PLAN	B.B. or W.B.
CM	11	<i>Crataegus mollis</i>	Red Hawthorn	40mm cal.	NATIVE, SPACING PER PLAN	B.B. or W.B.
GT	5	<i>Gleditsia triacanthos</i>	Honey Locust	50mm cal.	NATIVE, SPACING PER PLAN	B.B. or W.B.
QM	8	<i>Quercus macrocarpa</i>	Burr Oak	50mm cal.	NATIVE, SPACING PER PLAN	B.B. or W.B.
QR	10	<i>Quercus rubra</i>	Red Oak	50mm cal.	NATIVE, SPACING PER PLAN	B.B. or W.B.
SD	7	<i>Sorbus discolor</i>	Showy Mountain Ash	40mm cal.	2 PROPOSED ON CITY PROP	B.B. or W.B.
TA	6	<i>Tilia americana</i>	American Basswood	50mm cal.		B.B. or W.B.

#### CONIFEROUS TREES

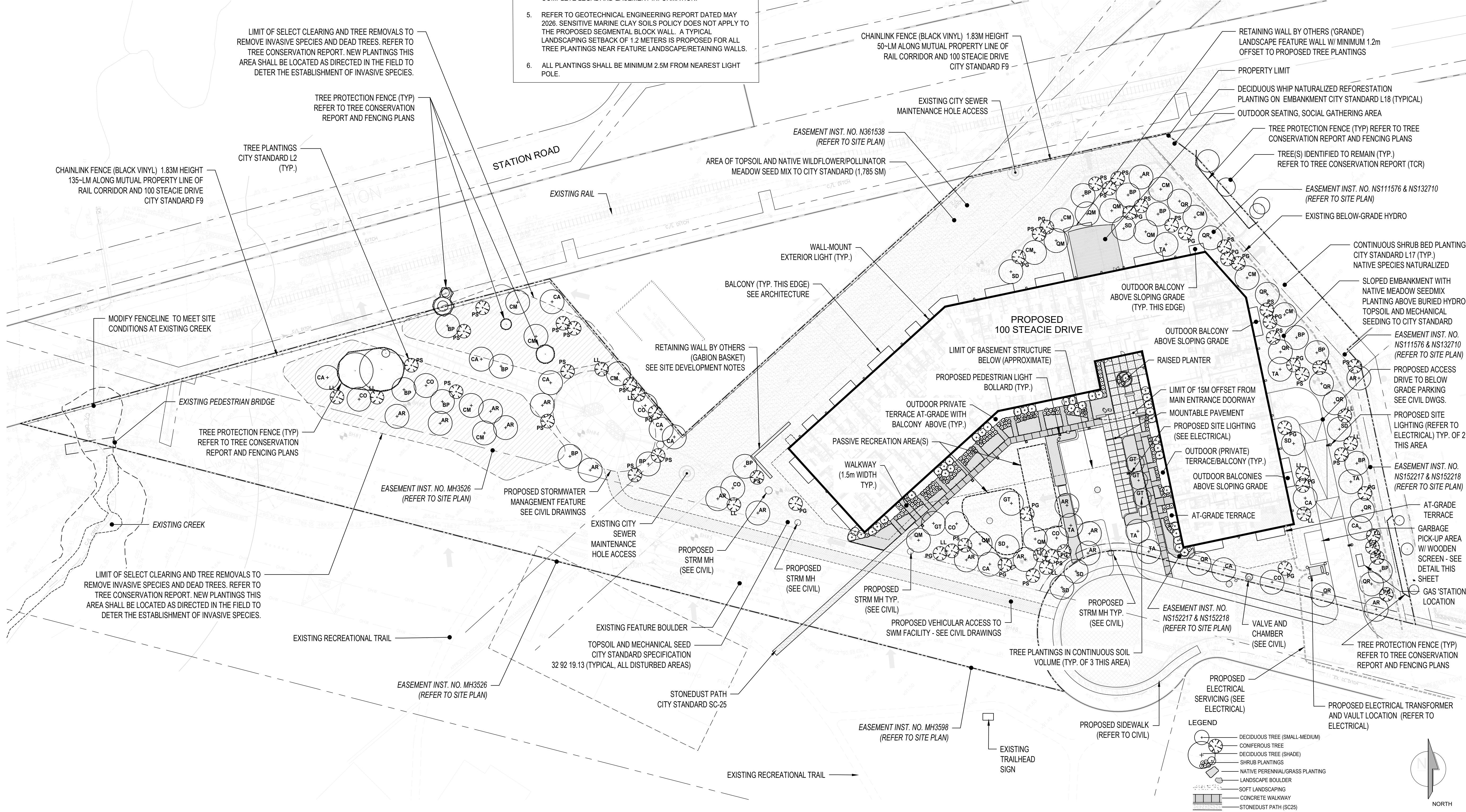
KEY	QTY.	BOTANICAL NAME	COMMON NAME	HEIGHT	CONDITION
LL	14	<i>Larix laricina</i>	Common Larch	2m height	NATIVE, SPACING PER PLAN B.B. or W.B.
PG	20	<i>Pinus glauca</i>	White Spruce	2m height	NATIVE, SPACING PER PLAN B.B. or W.B.
PS	29	<i>Pinus strobus</i>	White Pine	2m height	NATIVE, SPACING PER PLAN B.B. or W.B.

#### DECIDUOUS SHRUBS - 'CONTINUOUS BED'

KEY	QTY.	BOTANICAL NAME	COMMON NAME	HEIGHT	CONDITION
AnA	80	<i>Amelanchier alnifolia</i>	Saskatoon Serviceberry	125 cm	NATIVE, SPACING PER PLAN POTTED
AM	110	<i>Aronia melanocarpa</i>	Native Chokeberry	80 cm	NATIVE, SPACING PER PLAN POTTED
SaD	50	<i>Salix discolor</i>	Pussy Willow	50 cm	NATIVE, SPACING PER PLAN POTTED
VIT	80	<i>Viburnum trilobum</i>	Highbush Cranberry	40 cm	NATIVE, SPACING PER PLAN POTTED

#### CONIFEROUS SHRUBS - 'CONTINUOUS BED'

KEY	QTY.	BOTANICAL NAME	COMMON NAME	HEIGHT	CONDITION
JuH	150	<i>Juniperus horizontalis</i>	Savin Juniper	30 cm	NATIVE, SPACING PER PLAN POTTED
TaC	180	<i>Taxus canadensis</i>	Canadian Yew	80 cm	NATIVE, SPACING PER PLAN POTTED



Revision	By	Appd.	YY.MM.DD
ISSUED FOR SITE PLAN APPLICATION (rev)	JAL		26.07.06
ISSUED FOR RESPONSE TO ZONING COM.	JAL		26.06.11
ISSUED FOR COORDINATION	JAL		26.05.20
ISSUED FOR SITE PLAN APPLICATION (rev)	JAL		26.03.24
ISSUED FOR PERMIT	JAL		25.12.19
ISSUED FOR SITE PLAN APPLICATION (rev)	JAL		25.12.04

File Name: \_\_\_\_\_ Dwn. Chkd. Dgn. YY.MM.DD

REFER TO ARCHITECTURAL SITE PLAN FOR DISCIPLINE SPECIFIC PROFESSIONALS OF RECORD INFORMATION INCLUDING ARCHITECTURE, ENGINEERING, SURVEYOR AND RELATED LEGAL DESCRIPTIONS.

**NOT FOR CONSTRUCTION**  
2026 07 06

Client/Project  
**BRIGIL**  
100 STEACIE DRIVE  
OTTAWA, ON

Title  
**LANDSCAPE PLAN**

Project No. SF 24001  
Drawing No. LP-1

Scale  
1:500

Sheet  
1 of 4

Revision  
1

Client/Project  
**BRIGIL**  
100 STEACIE DRIVE  
OTTAWA, ON

Title  
**LANDSCAPE PLAN**

Project No. SF 24001  
Drawing No. LP-1

Scale  
1:500

Sheet  
1 of 4

Revision  
1

