

CB #	TOP OF GRATE ELEVATION (m)	MAXIMUM SPILL			
		AREA (m ²)	MAX SPILL DEPTH (m)	MAX PRISM VOLUME (m ³)	
CB01	101.20	3.8	101.40	0.20	0.3
CB02	102.43	187.4	102.60	0.17	10.6
CB03	103.43	100.5	103.52	0.09	3.0
CBM-H04	103.36	96.3	103.52	0.16	5.1
CB04	102.50	187.4	102.60	0.10	6.2
CBM-H05	102.35	187.4	102.60	0.25	15.6
CB05	102.45	115.7	102.60	0.15	5.8
CB06	103.00	15.0	103.15	0.15	0.8
CBM-H08	102.45	115.7	102.60	0.15	5.8
CB10	102.42	24.0	102.60	0.18	1.4
CB11	102.50	8.5	102.60	0.10	0.3

APPROVED
By Kersten Nitsche at 1:39 pm, Dec 19, 2025

Kersten Nitsche
KERSTEN NITSCHKE, MCIP RPP
MANAGER (A), DEVELOPMENT REVIEW WEST
PLANNING, DEVELOPMENT AND BUILDING SERVICES
DEPARTMENT, CITY OF OTTAWA

NOTE
PONDING LIMITS SHOWN ON PLAN
REFLECT SPILL ELEVATIONS AND
ARE NOT STORAGE VOLUMES
RESULTING FROM USE OF ICD.

NOTE
ALL FOUNDATION DRAINS SHALL
CONNECT TO THE 250mm ϕ
STORM SEWER NETWORK

NOTE
ALL COLLECTED ROOFTOP
STORMWATER TO BE CONVEYED
TO THE FRONT OF UNITS

LEGEND

SITE PLAN PROPERTY LINES

- SITE PLAN PROPERTY LINES

SITE PLAN BLOCK LINES

- EX-SANMH EXISTING SANITARY MANHOLE
- EX-STMMH EXISTING STORM MANHOLE
- EX-CB/MH EXISTING CATCHBASIN/MANHOLE
- EX-CB EXISTING CATCHBASIN
- EX-VALV EXISTING VALVE AND VALVE BOX
- EX-VALV-CH EXISTING VALVE AND VALVE CHAMBER
- EX-FH EXISTING FIRE HYDRANT
- EX-101.54 EXISTING ELEVATION (EARLY SMITH & DENNIS)
- EXISTING CONTOURS IN HYDRO CORRIDOR FROM DMAE 2015 DIM.

PROPOSED ELEVATION

- SANMH 100 PROPOSED SANITARY MANHOLE
- STMMH 200 PROPOSED STORM MANHOLE
- CBM 205 PROPOSED CATCHBASIN/MANHOLE
- CB1 PROPOSED CATCHBASIN
- CIB 5 PROPOSED CURB INLET CATCHBASIN
- CBT PROPOSED CATCHBASIN TEE (AS PER CITY STND. S30)
- CBE PROPOSED CATCHBASIN ELBOW (AS PER CITY STND. S31)
- V&VB PROPOSED VALVE AND VALVE BOX
- V&VC PROPOSED VALVE AND VALVE CHAMBER
- FH TF PROPOSED FIRE HYDRANT TOP OF FLANGE
- CS PROPOSED CURB STOP
- PROPOSED WATER METER
- FFL FINISHED FLOOR LEVEL ELEVATION
- TF TOP OF FOUNDATION ELEVATION
- USF UNDERSIDE OF FOOTING ELEVATION

BOREHOLE LOCATION AND NUMBER

- BHP BOREHOLE LOCATION AND NUMBER ORIGINAL GROUND ELEVATION TOP OF ROCK ELEVATION
- BFP BOREHOLE LOCATION AND NUMBER ORIGINAL GROUND ELEVATION TOP OF ROCK ELEVATION

PROPOSED MOUNTABLE CURB (AS PER CITY STND. SC1.3)

PROPOSED BARRIER CURB (AS PER CITY STND. SC1.1)

PROPOSED DEPRESSED BARRIER CURB (AS PER CITY STND. SC1.1)

PROPOSED SWALE

OVERLAND FLOW ROUTE

MAXIMUM SPILL PONDING AREA

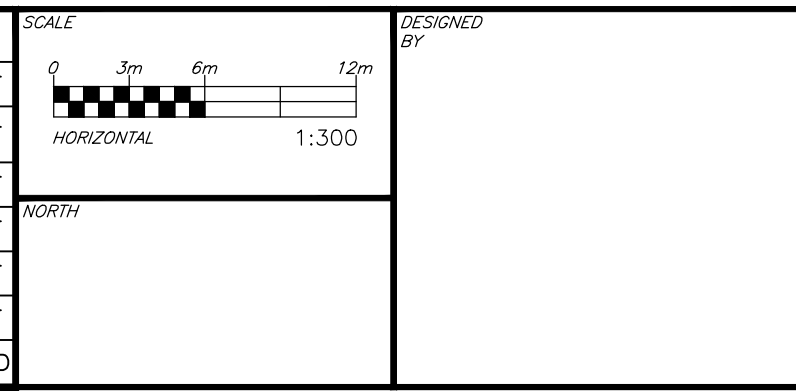
HEAVY DUTY PAVEMENT STRUCTURE:
40mm 12.5mm SUPERPAVE CATEGORY B, PG58-34
50mm 19.0mm SUPERPAVE CATEGORY B, PG58-34
150mm GRANULAR 'A'
400mm GRANULAR 'B' TYPE II

LIGHT DUTY PAVEMENT STRUCTURE:
40mm 12.5mm SUPERPAVE CATEGORY B, PG58-34
50mm 19.0mm SUPERPAVE CATEGORY B, PG58-34
150mm GRANULAR 'A'
300mm GRANULAR 'B' TYPE II

PATHWAY PAVEMENT STRUCTURE:
50mm HL3F, PG58-34
300mm GRANULAR 'A' OVER COMPETENT SUBGRADE

CAUTION
THE POSITION OF ALL POLE LINES, CONDUITS, WATERMANS, SEWERS AND OTHER UNDERGROUND AND OVERGROUND UTILITIES AND STRUCTURES IS NOT NECESSARILY SHOWN ON THE CONTRACT DRAWINGS, AND WHERE SHOWN, THE ACCURACY OF THE POSITION OF SUCH UTILITIES AND STRUCTURES IS NOT GUARANTEED. BEFORE STARTING WORK, DETERMINE THE EXACT LOCATION OF ALL SUCH UTILITIES AND STRUCTURES AND ASSUME ALL LIABILITY FOR DAMAGE TO THEM.

REV	REVISION DESCRIPTION	DATE	BY	APPD	REV	REVISION DESCRIPTION	DATE	BY	APPD
6	ISSUED FOR CITY APPROVAL	15/12/25	AAS	BMT					
5	ISSUED FOR CITY APPROVAL	07/11/25	AAS	BMT					
4	ISSUED FOR COORDINATION	16/09/25	AAS	BMT					
3	REVISED BUILDING FFE'S	05/09/25	AAS	BMT					
2	CITY NUMBER ADDED	03/06/25	AAS	BMT					
1	ISSUED FOR CITY APPROVAL	23/05/25	AAS	BMT					



DESIGNED BY
B. M. THOMAS
LICENSED PROFESSIONAL ENGINEER
PROVINCE OF ONTARIO
2025-12-15

DEVELOPER
CONCORDE PROPERTIES
408 TWEEDSMuir AVENUE
OTTAWA, ON. K1Z 5N5

exp. Services Inc.
1-416-368-1899 / 1-613-225-7330
3000 Steeles Ave. East, Unit 100
Oshawa, ON M1B 4R6
Canada
www.exp.com

BASE PLAN: SAB
DESIGN: AS
CHECKED: [Signature]
DATE: JUNE 2023

PROJECT: **SECOND LINE ROAD**
1158 OLD SECOND LINE ROAD
KANATA, ONTARIO.

TITLE: **SITE GRADING PLAN**

PROJECT MANAGER: BMT
DATE: JUNE 2023

PROJECT No. OTT-25006292-AD
SURVEY FSD
DATE: JUNE 2023
DRAWING No. C02