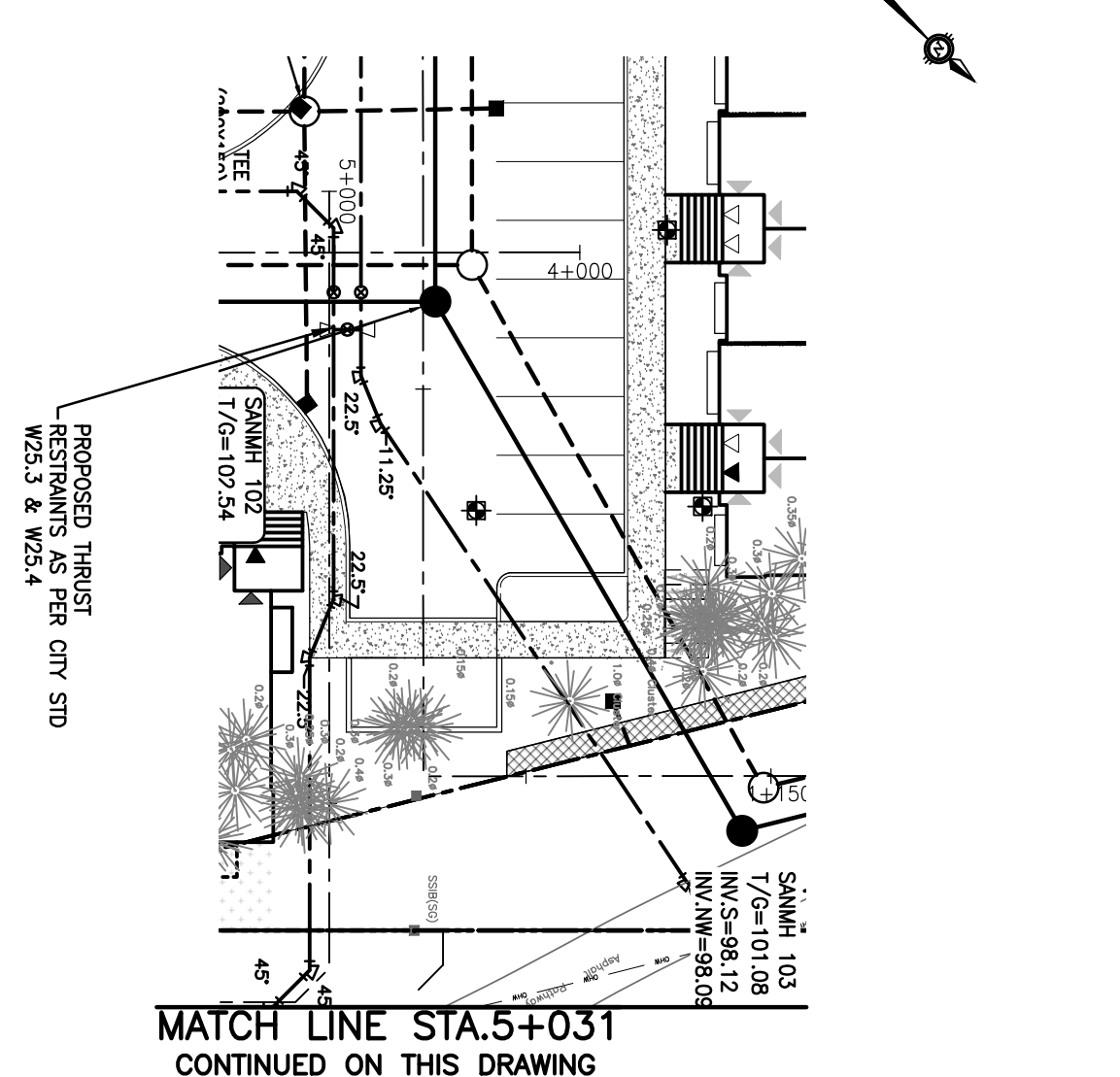
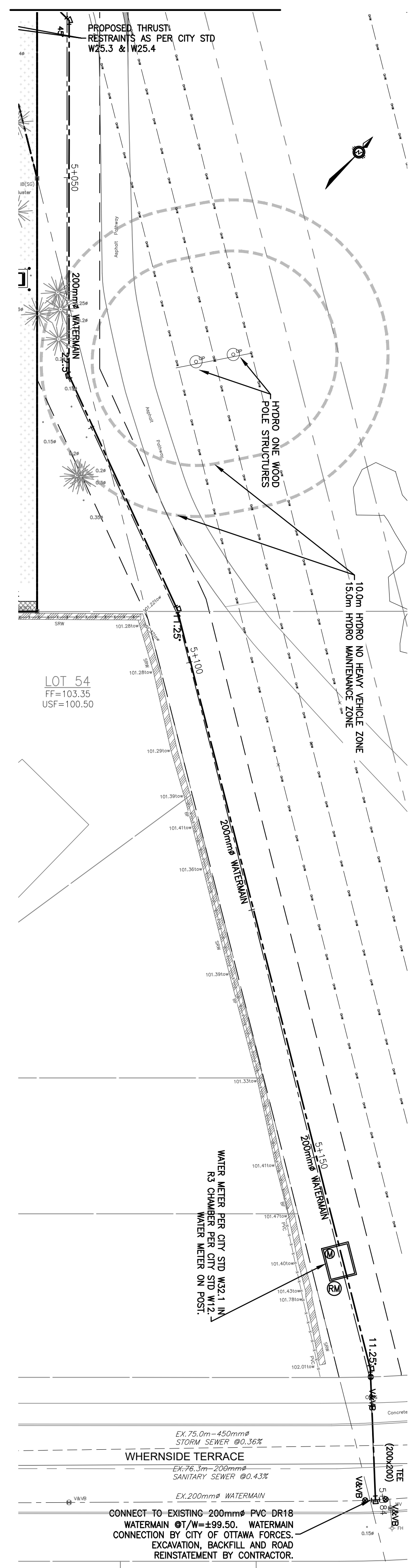


*Kersten Nitsche*  
**KERSTEN NITSCHÉ, M.C.P. RPP**  
 MANAGER (A), DEVELOPMENT REVIEW WEST  
 PLANNING, DEVELOPMENT AND BUILDING SERVICES  
 DEPARTMENT, CITY OF OTTAWA

**APPROVED**  
 By Kersten Nitsche at 1:52 pm, Dec 19, 2025

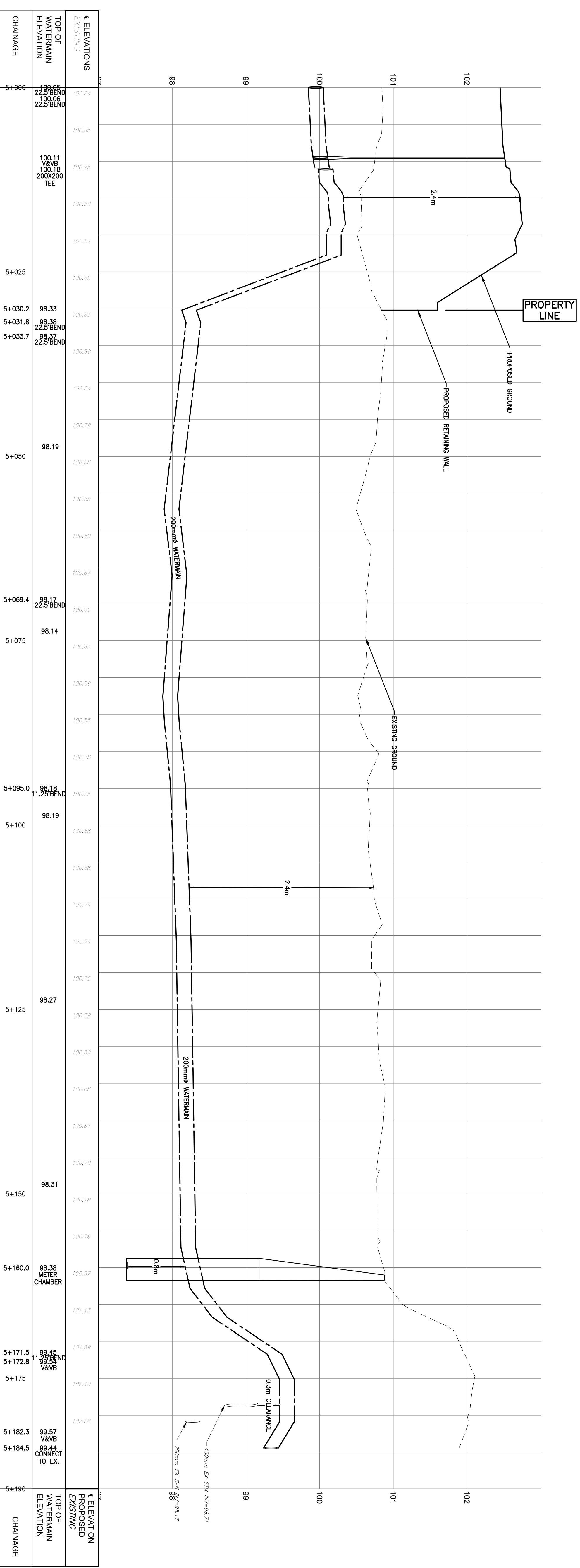


**MATCH LINE STA. 5+031**  
 CONTINUED ON THIS DRAWING



LOT 54  
 FF=103.35  
 USF=100.50

WHERSIDE TERRACE  
 EX. 75.0m - 450mm#  
 STORM SEWER @0.36%  
 EX. 76.3m - 200mm#  
 SANITARY SEWER @0.43%  
 EX. 200mm# WATERMAIN  
 CONNECT-TO EXISTING 200mm# PVC DR18  
 WATERMAIN @T/W=±99.50. WATERMAIN  
 CONNECTION BY CITY OF OTTAWA FORCES.  
 EXCAVATION, BACKFILL AND ROAD  
 REINSTATEMENT BY CONTRACTOR.



CHAINAGE	± ELEVATIONS EXISTING	± ELEVATION PROPOSED	TOP OF WATERMAIN ELEVATION
5+000	98.88	100.00	98.88
5+005	98.86	100.00	98.86
5+010	98.84	100.00	98.84
5+015	98.82	100.00	98.82
5+020	98.80	100.00	98.80
5+025	98.78	100.00	98.78
5+030.2	98.33	100.00	98.33
5+031.8	98.32	100.00	98.32
5+033.7	98.37	100.00	98.37
5+033.7	98.37	100.00	98.37
5+040	98.35	100.00	98.35
5+045	98.33	100.00	98.33
5+050	98.19	100.00	98.19
5+055	98.17	100.00	98.17
5+060	98.15	100.00	98.15
5+065	98.13	100.00	98.13
5+070	98.11	100.00	98.11
5+075	98.14	100.00	98.14
5+080	98.17	100.00	98.17
5+085	98.19	100.00	98.19
5+090	98.18	100.00	98.18
5+095	98.15	100.00	98.15
5+100	98.19	100.00	98.19
5+105	98.21	100.00	98.21
5+110	98.23	100.00	98.23
5+115	98.25	100.00	98.25
5+120	98.27	100.00	98.27
5+125	98.29	100.00	98.29
5+130	98.31	100.00	98.31
5+135	98.33	100.00	98.33
5+140	98.35	100.00	98.35
5+145	98.37	100.00	98.37
5+150	98.38	100.00	98.38
5+155	98.39	100.00	98.39
5+160	98.40	100.00	98.40
5+165	98.41	100.00	98.41
5+170	98.42	100.00	98.42
5+175	98.43	100.00	98.43
5+180	98.44	100.00	98.44
5+185	98.45	100.00	98.45
5+190	98.46	100.00	98.46

**CAUTION:** OF ALL POLE LINES, CONDUITS, WATERMANS, SEWERS AND OTHER UNDERGROUND AND OVERGROUND UTILITIES SHOWN HEREIN IS NOT RESEARCHED AND WHERE SHOWN, THE ACCURACY OF THE POSITION OF SUCH UTILITIES AND POSITIONING THEREOF IS NOT GUARANTEED. STARTING WORK, DETERMINE THE EXACT LOCATION OF ALL SUCH UTILITIES AND DAMAGE TO THEM.

NO.	REV.	REVISION DESCRIPTION	DATE	BY	APP.
1	1	ISSUED FOR CITY APPROVAL	23/05/25	AS	BMT
2	2	CITY NUMBER ADDED	03/06/25	AS	BMT
3	3	ISSUED FOR CITY APPROVAL	07/11/25	AS	BMT
4	4	ISSUED FOR CITY APPROVAL	15/12/25	AS	BMT

SCALE: 1:300

DESIGNED BY: B. H. THORNTON  
 LICENSED PROFESSIONAL ENGINEER  
 2025-12-13/25

CONCORDE PROPERTIES  
 408 TWEEDSMuir AVENUE  
 OTTAWA, ON, K1Z 5N5

exp. ENGINEERING INC.  
 1711 BAYVIEW RD. #110  
 SCARBOROUGH, ON M1B 4Y1  
 (416) 291-1111  
 WWW.EXP-ENGINEERING.COM

PROJECT NO: OTT-25000202-AN  
 SHEET: FSD  
 DATE: JUNE 2023

PROJECT TITLE: SECOND LINE ROAD  
 1158 OLD SECOND LINE ROAD  
 KANATA, ONTARIO

PROFILE ANTELOPE PRIVATE  
 STA. 5+000 TO STA. 5+190

PROJECT NO: C07-B