

APPROVED
By Kersten Nitsche at 1:50 pm, Dec 19, 2025

Kersten Nitsche

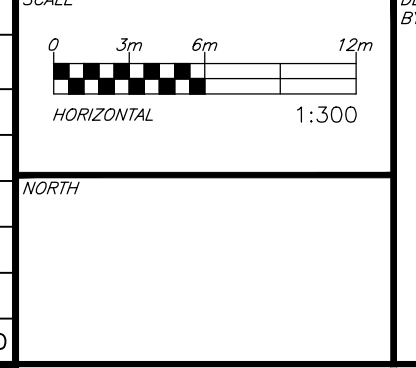
KERSTEN NITSCHKE, MCIP RPP
MANAGER (A), DEVELOPMENT REVIEW WEST
PLANNING, DEVELOPMENT AND BUILDING SERVICES
DEPARTMENT, CITY OF OTTAWA

CHAINAGE	EXISTING ELEVATIONS	PROPOSED ELEVATIONS	CHAINAGE
3+000	102.87	102.46	3+000
3+043.1	103.49	103.46	3+043.1
3+044.6	103.46	103.55	3+044.6
3+011.4	103.55	103.75	3+011.4
3+016.0	103.65	103.85	3+016.0
3+025	103.75	104.05	3+025
3+030.0	103.85	104.15	3+030.0
3+039.7	103.95	104.28	3+039.7
3+047.3	104.05	104.36	3+047.3
3+050.8	104.15	104.46	3+050.8
3+056.3	104.28	104.49	3+056.3
3+062.7	104.36	104.57	3+062.7
3+069.7	104.46	104.67	3+069.7
3+070	104.57	104.67	3+070

CHAINAGE	EXISTING ELEVATIONS	PROPOSED ELEVATIONS	CHAINAGE
4+000	102.46	102.49	4+000
4+008.0	102.49	102.53	4+008.0
4+010.0	102.53	102.57	4+010.0
4+011.1	102.57	102.62	4+011.1
4+015.9	102.62	102.66	4+015.9
4+025	102.66	102.70	4+025
4+030.0	102.70	102.64	4+030.0
4+039.7	102.64	102.58	4+039.7
4+041.1	102.58	102.56	4+041.1
4+116.4	102.56	102.59	4+116.4
4+048.5	102.59	102.52	4+048.5
4+059.5	102.52	102.47	4+059.5
4+051.2	102.47	102.41	4+051.2
1+114.9	102.41	102.32	1+114.9
4+056.9	102.32	102.21	4+056.9
2+074.3	102.21	102.07	2+074.3
1+114.9	102.07	102.07	1+114.9

CAUTION
THE POSITION OF ALL POLE LINES, CONDUITS, WATERMANS, SEWERS AND OTHER UNDERGROUND AND OVERGROUND UTILITIES AND STRUCTURES IS NOT NECESSARILY SHOWN ON THE CONTRACT DRAWINGS, AND WHERE SHOWN, THE ACCURACY OF THE POSITION OF SUCH UTILITIES AND STRUCTURES IS NOT GUARANTEED. BEFORE STARTING WORK, DETERMINE THE EXACT LOCATION OF ALL SUCH UTILITIES AND STRUCTURES AND ASSUME ALL LIABILITY FOR DAMAGE TO THEM.

REV	REVISION DESCRIPTION	DATE	BY	APPD
4	ISSUED FOR CITY APPROVAL	15/12/25	AAS	BMT
3	ISSUED FOR CITY APPROVAL	07/11/25	AAS	BMT
2	CITY NUMBER ADDED	03/06/25	AAS	BMT
1	ISSUED FOR CITY APPROVAL	23/05/25	AAS	BMT



DESIGNED BY: B. M. THOMAS
REVIEWED BY: B. M. THOMAS
LICENSED PROFESSIONAL ENGINEER
PROVINCE OF ONTARIO
2025-12-15

DEVELOPER: CONCORDE PROPERTIES
408 TWEEDSMuir AVENUE
OTTAWA, ON. K1Z 5N5

exp Services Inc.
1-877-668-1899 | 1-613-225-7330
200 Wellington Street, Unit 100
Ottawa, ON K2B 8R6
Canada
www.exp.com

PROJECT: SECOND LINE ROAD
1158 OLD SECOND LINE ROAD
KANATA, ONTARIO.

TITLE: PROFILE ANTELOPE PRIVATE
STA. 3+000 TO STA. 3+070
STA. 4+000 TO STA. 4+075

PROJECT No. OTT-25006292-AD
SURVEY FSD
DATE JUNE 2023
DRAWING No. C07