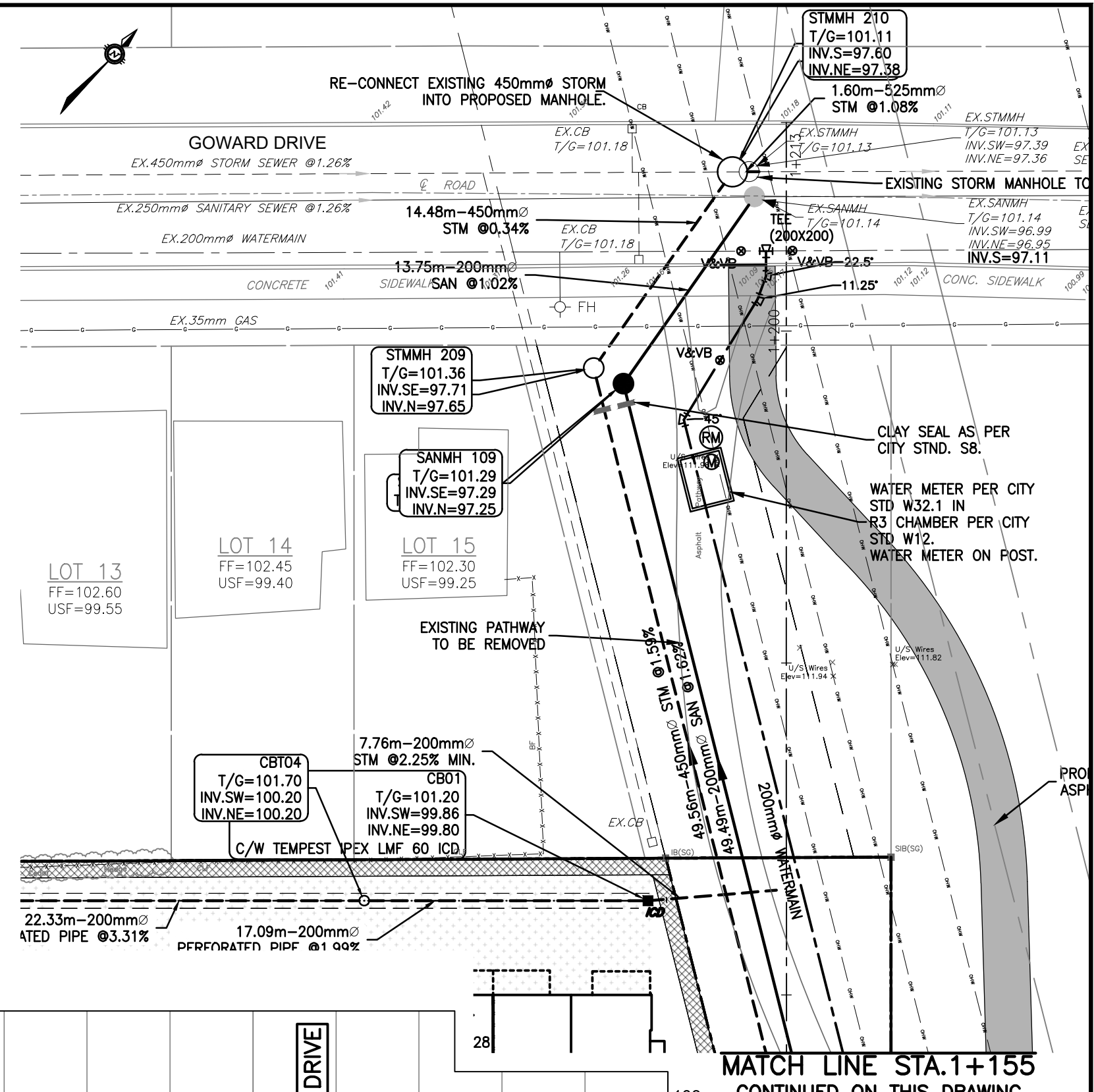
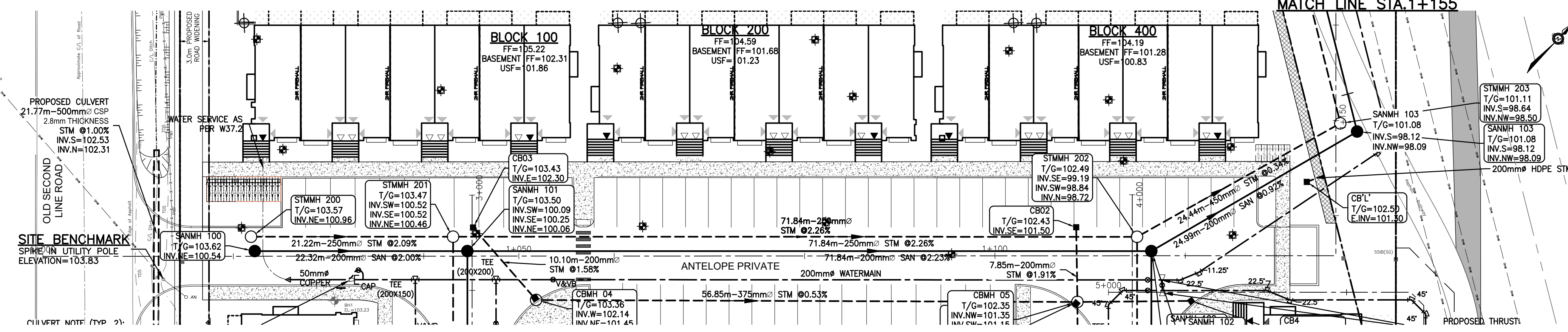
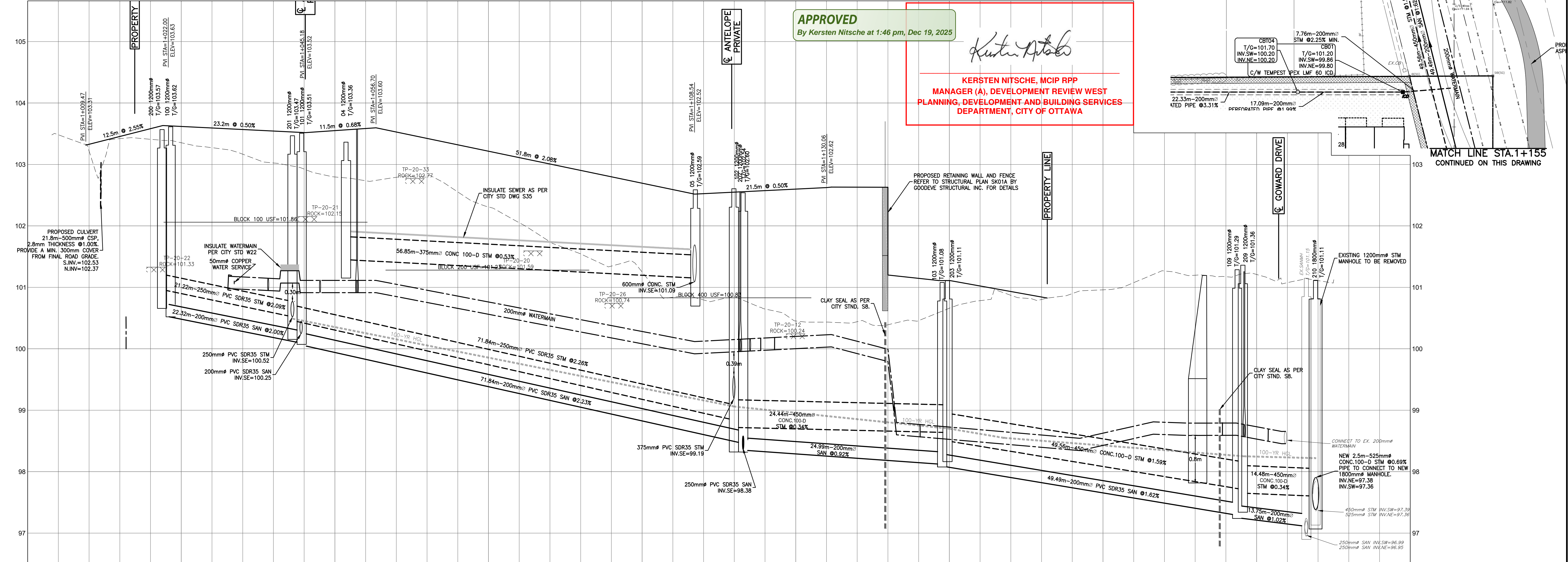


CONTINUED ON THIS DRAWING
MATCH LINE STA. 1+155



APPROVED
By Kersten Nitsche at 1:46 pm, Dec 19, 2025

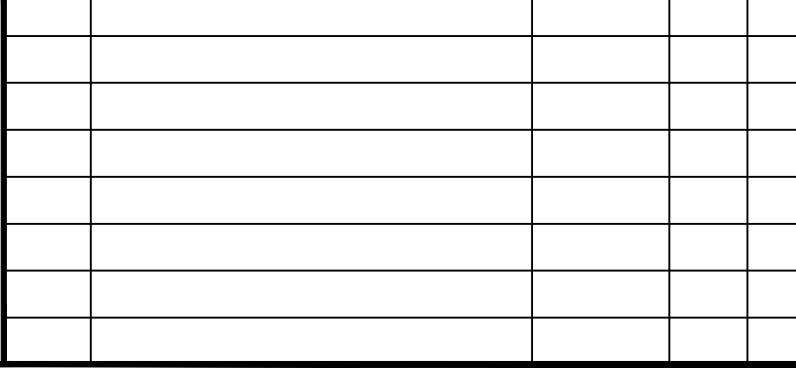
Kersten Nitsche
**KERSTEN NITSCHKE, MCIP RPP
MANAGER (A), DEVELOPMENT REVIEW WEST
PLANNING, DEVELOPMENT AND BUILDING SERVICES
DEPARTMENT, CITY OF OTTAWA**



CHAINAGE	ELEVATIONS PROPOSED	TOP OF WATERMAIN ELEVATION	STORM SEWER INVERTS	100-YR STORM SEWER INVERTS	SANITARY SEWER INVERTS	ELEVATION PROPOSED EXISTING	TOP OF WATERMAIN ELEVATION	STORM SEWER INVERTS	SANITARY SEWER INVERTS	CHAINAGE
1+000	103.33	103.48	21.77m-500mm STM @ 1.00%			103.33				1+000
1+020	103.45	103.58				103.45				1+020
1+047.6	103.62	103.59	21.22m-250mm PVC SDR35 STM @ 2.09%			103.62				1+047.6
1+060	103.57	103.54				103.57				1+060
1+081.6	103.52	103.52				103.52				1+081.6
1+100	103.55	103.55				103.55				1+100
1+118.4	103.52	103.52				103.52				1+118.4
1+143.3	103.42	103.42				103.42				1+143.3
1+160	103.32	103.32				103.32				1+160
1+182.5	103.22	103.22				103.22				1+182.5
1+200	103.11	103.11				103.11				1+200
1+225	103.01	103.01				103.01				1+225
1+250	102.90	102.90				102.90				1+250
1+275	102.80	102.80				102.80				1+275
1+300	102.70	102.70				102.70				1+300
1+325	102.59	102.59				102.59				1+325
1+350	102.52	102.52				102.52				1+350
1+375	102.55	102.55				102.55				1+375
1+400	102.57	102.57				102.57				1+400
1+425	102.60	102.60				102.60				1+425
1+450	102.62	102.62				102.62				1+450
1+475	102.64	102.64				102.64				1+475
1+500	102.67	102.67				102.67				1+500
1+525	102.68	102.68				102.68				1+525
1+550	102.78	102.78				102.78				1+550
1+575	102.81	102.81				102.81				1+575
1+600	102.84	102.84				102.84				1+600
1+625	102.86	102.86				102.86				1+625
1+650	102.89	102.89				102.89				1+650
1+675	102.91	102.91				102.91				1+675
1+700	102.93	102.93				102.93				1+700
1+725	102.95	102.95				102.95				1+725
1+750	102.97	102.97				102.97				1+750
1+775	102.99	102.99				102.99				1+775
1+800	103.01	103.01				103.01				1+800
1+825	103.03	103.03				103.03				1+825
1+850	103.05	103.05				103.05				1+850
1+875	103.07	103.07				103.07				1+875
1+900	103.09	103.09				103.09				1+900
1+925	103.11	103.11				103.11				1+925
1+950	103.13	103.13				103.13				1+950
1+975	103.15	103.15				103.15				1+975
1+1000	103.17	103.17				103.17				1+1000
1+1025	103.18	103.18				103.18				1+1025
1+1050	103.19	103.19				103.19				1+1050
1+1075	103.20	103.20				103.20				1+1075
1+1100	103.21	103.21				103.21				1+1100
1+1125	103.22	103.22				103.22				1+1125
1+1150	103.23	103.23				103.23				1+1150
1+1175	103.24	103.24				103.24				1+1175
1+1200	103.25	103.25				103.25				1+1200
1+1225	103.26	103.26				103.26				1+1225
1+1250	103.27	103.27				103.27				1+1250
1+1275	103.28	103.28				103.28				1+1275
1+1300	103.29	103.29				103.29				1+1300
1+1325	103.30	103.30				103.30				1+1325
1+1350	103.31	103.31				103.31				1+1350
1+1375	103.32	103.32				103.32				1+1375
1+1400	103.33	103.33				103.33				1+1400
1+1425	103.34	103.34				103.34				1+1425
1+1450	103.35	103.35				103.35				1+1450
1+1475	103.36	103.36				103.36				1+1475
1+1500	103.37	103.37				103.37				1+1500
1+1525	103.38	103.38				103.38				1+1525
1+1550	103.39	103.39				103.39				1+1550
1+1575	103.40	103.40				103.40				1+1575
1+1600	103.41	103.41				103.41				1+1600
1+1625	103.42	103.42				103.42				1+1625
1+1650	103.43	103.43				103.43				1+1650
1+1675	103.44	103.44				103.44				1+1675
1+1700	103.45	103.45				103.45				1+1700
1+1725	103.46	103.46				103.46				1+1725
1+1750	103.47	103.47				103.47				1+1750
1+1775	103.48	103.48				103.48				1+1775
1+1800	103.49	103.49				103.49				1+1800
1+1825	103.50	103.50				103.50				1+1825
1+1850	103.51	103.51				103.51				1+1850
1+1875	103.52	103.52				103.52				1+1875
1+1900	103.53	103.53				103.53				1+1900
1+1925	103.54	103.54				103.54				1+1925
1+1950	103.55	103.55				103.55				1+1950
1+1975	103.56	103.56				103.56				1+1975
1+2000	103.57	103.57				103.57				1+2000
1+2025	103.58	103.58				103.58				1+2025
1+2050	103.59	103.59				103.59				1+2050
1+2075	103.60	103.60				103.60				1+2075
1+2100	103.61	103.61				103.61				1+2100
1+2125	103.62	103.62				103.62				1+2125
1+2150	103.63	103.63				103.63				1+2150
1+2175	103.64	103.64				103.64				1+2175
1+2200	103.65	103.65				103.65				1+2200
1+2225	103.66	103.66				103.66				1+2225
1+2250	103.67	103.67				103.67				1+2250

CAUTION
THE POSITION OF ALL POLE LINES, CONDUITS, WATERMANS, SEWERS AND OTHER UNDERGROUND AND OVERGROUND UTILITIES AND STRUCTURES IS NOT NECESSARILY SHOWN ON THE CONTRACT DRAWINGS, AND WHERE SHOWN, THE ACCURACY OF THE POSITION OF SUCH UTILITIES AND STRUCTURES IS NOT GUARANTEED. BEFORE STARTING WORK, DETERMINE THE EXACT LOCATION OF ALL SUCH UTILITIES AND STRUCTURES AND ASSUME ALL LIABILITY FOR DAMAGE TO THEM.

REV	REVISION DESCRIPTION	DATE	BY	APPD
4	ISSUED FOR CITY APPROVAL	15/12/25	AAS	BMT
3	ISSUED FOR CITY APPROVAL	07/11/25	AAS	BMT
2	CITY NUMBER ADDED	03/06/25	AAS	BMT
1	ISSUED FOR CITY APPROVAL	23/05/25	AAS	BMT



DESIGNED BY	REVIEWED BY	DEVELOPER	BASEPLAN	PROJECT	PROJECT No.
B. M. THOMAS	B. M. THOMAS	CONCORDE PROPERTIES 408 TWEEDSMUIR AVENUE OTTAWA, ON. K1Z 5N5	SAB	SECOND LINE ROAD 1158 OLD SECOND LINE ROAD KANATA, ONTARIO.	OTT-25006292-AD
			DESIGN		SURVEY
			CHECKED		DATE
			CAD		JUNE 2023
			PROJECT MANAGER		DRAWING No.
			BMT		C05
			APPROVED		

exp Services Inc.
1-1-833-688-1899 | 1-613-225-7330
2500 Woodbine Ave., Unit 100
Markham, ON M3B 8H6
Canada
www.exp.com

• BUILDINGS • EARTH & ENVIRONMENT • ENERGY •
• INDUSTRIAL • INFRASTRUCTURE • SUSTAINABILITY •

PROFESSIONAL ENGINEER
B. M. THOMAS
2025-12-16
PROVINCE OF ONTARIO

exp Services Inc.
1-1-833-688-1899 | 1-613-225-7330
2500 Woodbine Ave., Unit 100
Markham, ON M3B 8H6
Canada
www.exp.com

• BUILDINGS • EARTH & ENVIRONMENT • ENERGY •
• INDUSTRIAL • INFRASTRUCTURE • SUSTAINABILITY •