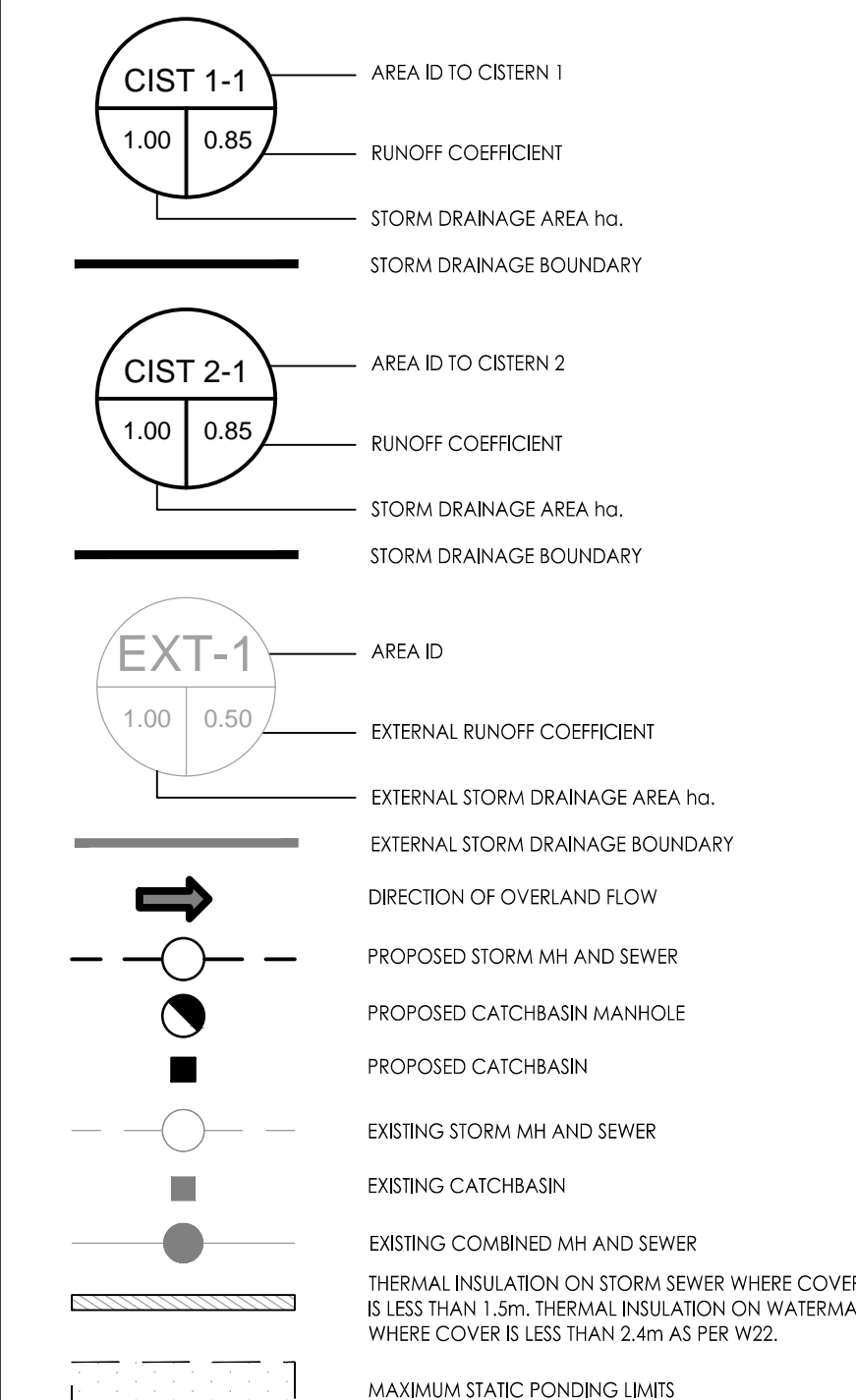


Copyright Reserved

The Contractor shall verify and be responsible for all dimensions. DO NOT scale the drawing - any errors or omissions shall be reported to Stantec without delay.  
The Copyrights to all designs and drawings are the property of Stantec. Reproduction or use for any purpose other than that authorized by Stantec is forbidden.

Legend



Notes

- ALL CATCH BASINS AND TRENCH DRAINS TO BE CONNECTED TO INTERNAL PLUMBING AND COLLECTED IN STORM WATER MANAGEMENT CISTERNS.
- STORMWATER MANAGEMENT TO BE PROVIDED THROUGH 2 CISTERNS, ONE CISTERNS PER DEVELOPMENT PHASE.  
PHASE 1 CISTERNS = 190.0m<sup>3</sup>  
PHASE 2 CISTERNS = 160.0m<sup>3</sup>  
MAX. CISTERNS RELEASE RATE TO STORM SEWER  
PHASE 1 CISTERNS RELEASE RATE = 24.3%/s  
PHASE 2 CISTERNS RELEASE RATE = 22.3%/s

Revision	By	Appd.	YY.MM.DD	
6	REVISED PARK GRADING UPDATES	MJS	DT	26.05.15
5	30% ISSUED FOR COORDINATION	MJS	DT	25.09.19
4	REVISED AS PER CITY COMMENTS	MJS	DT	25.05.14
3	REVISED AS PER CITY COMMENTS	MJS	DT	24.09.16
2	REVISED AS PER CITY COMMENTS	MJS	DT	24.05.20
1	REVISED AS PER CITY COMMENTS	MJS	DT	24.03.13
0	ISSUED FOR SPA	MJS	MF	23.05.15

Revision	By	Appd.	YY.MM.DD	
6	REVISED PARK GRADING UPDATES	MJS	DT	26.05.15
5	30% ISSUED FOR COORDINATION	MJS	DT	25.09.19
4	REVISED AS PER CITY COMMENTS	MJS	DT	25.05.14
3	REVISED AS PER CITY COMMENTS	MJS	DT	24.09.16
2	REVISED AS PER CITY COMMENTS	MJS	DT	24.05.20
1	REVISED AS PER CITY COMMENTS	MJS	DT	24.03.13
0	ISSUED FOR SPA	MJS	MF	23.05.15

File Name: 160401663 DB - 1.dwg

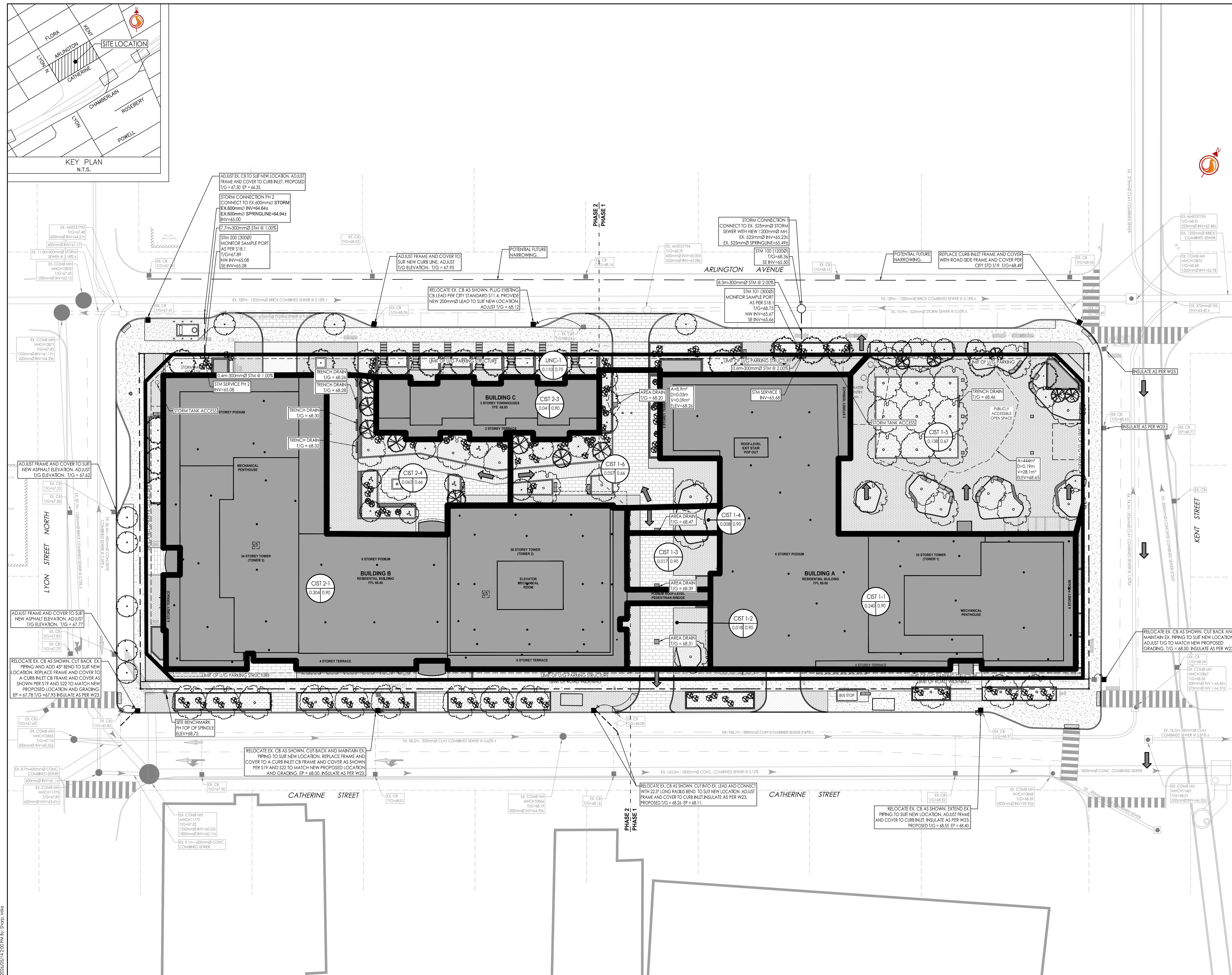
Permit/Seal	Dwn.	Chkd.	Dgn.	YY.MM.DD
				23.02.06

Client/Project

BRIGIL  
  
265 CATHERINE STREET  
  
OTTAWA, ONTARIO, CANADA  
  
Title  
STORM DRAINAGE PLAN

Project No.	Scale
160401663	1:300

Drawing No.	Sheet	Revision
SD-1	7 of 8	6



X:\Users\m1661\OneDrive\Design\Drawings\160401663 DB - 1.dwg  
 2025/05/17 12:53 PM by 33575, MJE