

Copyright Reserved

The Contractor shall verify and be responsible for all dimensions. DO NOT scale the drawing - any errors or omissions shall be reported to Stantec without delay.
The Copyrights to all designs and drawings are the property of Stantec. Reproduction or use for any purpose other than that authorized by Stantec is forbidden.

Legend

- ORIGINAL GROUND ELEVATION
- PROPOSED ELEVATION
- PROPOSED LOT CORNER ELEVATION
- EXISTING ELEVATION AT LOT CORNER
- FLOW DIRECTION AND GRADE
- FINISHED FIRST FLOOR ELEVATION
- UNDERSIDE OF FOOTING ELEVATION
- ENGINEERED FILL REQUIRED
- TERRACING 3:1 SLOPE MAXIMUM (UNLESS OTHERWISE SHOWN)
- DIRECTION OF OVERLAND FLOW
- PROPOSED VALVE BOX
- PROPOSED VALVE CHAMBER
- PROPOSED FIRE HYDRANT
- PROPOSED SANITARY SEWER MANHOLE
- PROPOSED STORM SEWER MANHOLE
- PROPOSED CATCHBASIN MANHOLE
- PROPOSED CATCHBASIN
- PROPOSED DEPRESSED CURB LOCATION
- PROPOSED BARRIER CURB
- PROPOSED HEAVY DUTY ASPHALT
- OVERLAND SPILL LOCATION
- TWIS LOCATION AS PER CITY STD
- LIMITS OF ASPHALT OVERLAY FOLLOWING SERVING, CURB AND SIDEWALK INSTALLATION.

Notes

- PAVEMENT STRUCTURE - CAR PARKING ONLY**
50mm HL-3 OR SUPERPAVE 12.5 ASPHALTIC CONCRETE
150 OPSS GRANULAR 'A' BASE
300 OPSS GRANULAR 'B' TYPE II
- PAVEMENT STRUCTURE - ACCESS LANES AND HEAVY TRUCKS**
40mm HL-3 OR SUPERPAVE 12.5 ASPHALTIC CONCRETE
150 OPSS GRANULAR 'A' BASE
150 OPSS GRANULAR 'B' TYPE II

Revision	By	App'd.	YY.MM.DD	
6	REVISED PARK GRADING UPDATES	MJS	DT	26.05.15
5	30% ISSUED FOR COORDINATION	MJS	DT	25.09.19
4	REVISED AS PER CITY COMMENTS	MJS	DT	25.05.14
3	REVISED AS PER CITY COMMENTS	MJS	DT	24.09.16
2	REVISED AS PER CITY COMMENTS	MJS	DT	24.05.20
1	REVISED AS PER CITY COMMENTS	MJS	DT	24.03.13
0	ISSUED FOR SPA	MJS	MF	23.05.15

File Name: 160401663 DB - 1.dwg
Dwn. Chkd. Dgn. YY.MM.DD

Permit-Seal

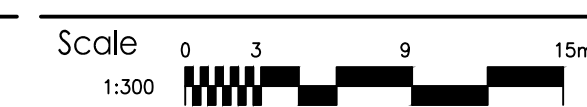
Client/Project

BRIGIL
265 CATHERINE STREET
OTTAWA, ONTARIO, CANADA

Title

GRADING PLAN

Project No.
160401663



Drawing No.

Sheet

Revision

GP-1

4 of 8

6

PLAN # 18991

