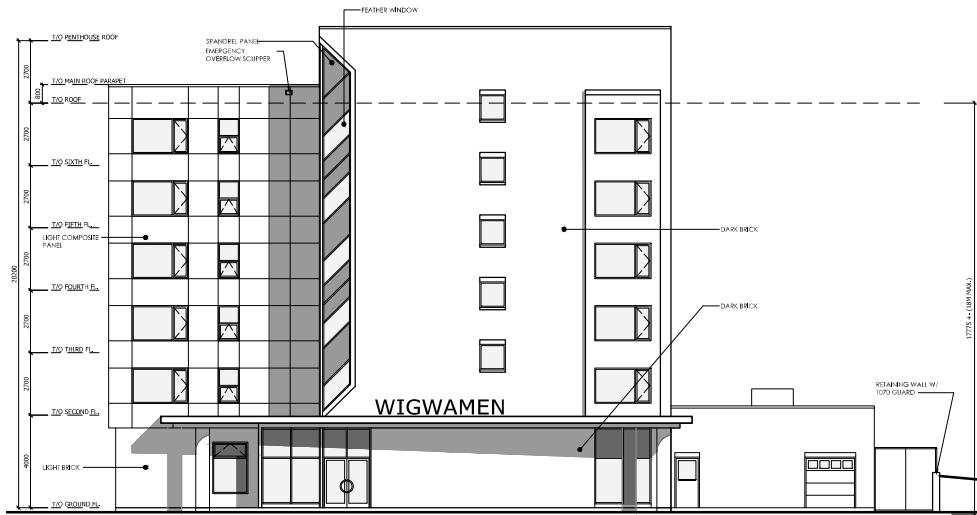


NO.	REVISION	DATE
1	ISSUED FOR SITE PLAN APPLICATION	DEC. 2022



Allison Hamlin

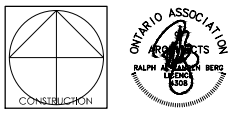
ALLISON HAMLIN
MANAGER, DEVELOPMENT REVIEW ALL WARDS
PLANNING, DEVELOPMENT & BUILDING SERVICES
DEPARTMENT, CITY OF OTTAWA

APPROVED
By Allison Hamlin at 1:37 pm, May 06, 2026

1 SOUTH ELEVATION
 A200 SCALE: 1/100



2 WEST ELEVATION
 A200 SCALE: 1/100



Vandenberg-Walshberg ARCHITECTS

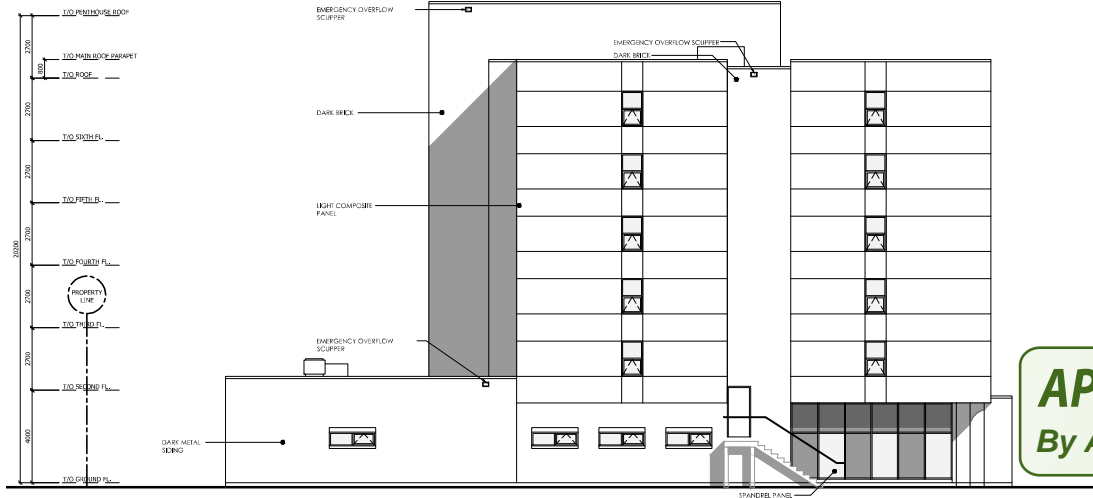
PROJECT TITLE: **WIGWAMEN**
 2040 ARROWSMITH DRIVE, OTTAWA, ON, K1J 8V9

DRAWING TITLE: **ELEVATIONS**

DESIGNED BY: RV
 DRAWN BY: JN, NG
 START DATE: 2022
 SCALE: AS SHOWN
 PROJECT NO.: 2200

A200

NO.	REVISION	DATE
1	ISSUED FOR SITE PLAN APPLICATION	DEC. 2022



1 NORTH ELEVATION
SCALE: 1:100

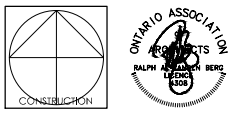
Allison Hamlin

ALLISON HAMLIN
MANAGER, DEVELOPMENT REVIEW ALL WARDS
PLANNING, DEVELOPMENT & BUILDING SERVICES
DEPARTMENT, CITY OF OTTAWA

APPROVED
 By Allison Hamlin at 1:37 pm, May 06, 2026



2 EAST ELEVATION
SCALE: 1:100



Vandenberg-Walsh Architects

PROJECT TITLE: WIGWAMEN
 2040 ARROWSMITH DRIVE, OTTAWA, ON, K1J 8V9

DRAWING TITLE: ELEVATIONS

DESIGNED BY: RV
 DRAWN BY: JN, NG
 START DATE: 2022
 SCALE: AS SHOWN
 PROJECT NO.: 2200

A201