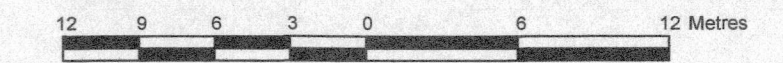


**PART OF BLOCK 11  
REGISTERED PLAN 4M-356  
CITY OF OTTAWA**

Surveyed by Annis, O'Sullivan, Vollebek Ltd.

Scale 1 : 300



Metric

DISTANCES AND COORDINATES SHOWN ON THIS PLAN ARE IN METRES AND CAN BE CONVERTED TO FEET BY DIVIDING BY 0.3048.

**Surveyor's Certificate**

I CERTIFY THAT:

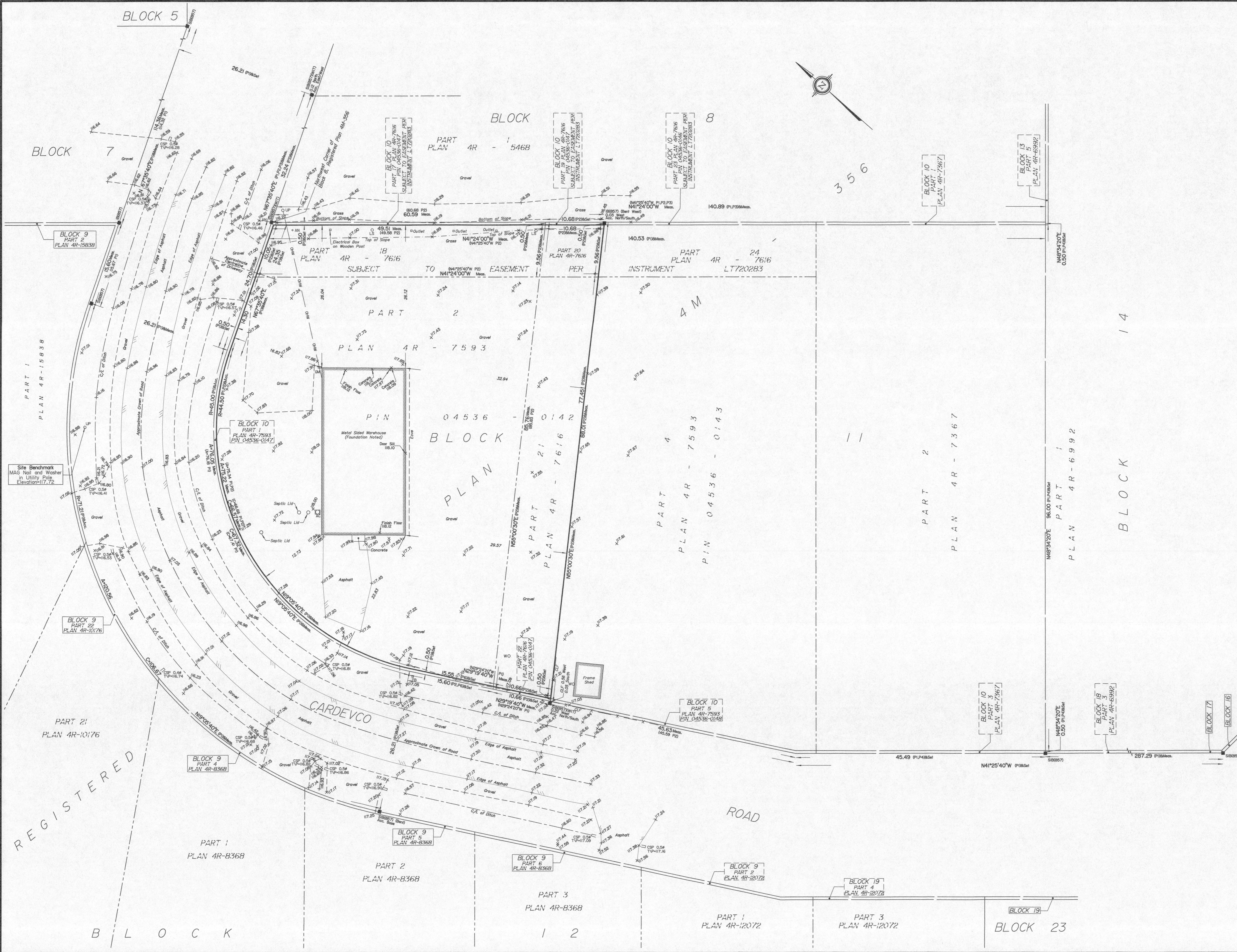
1. This survey and plan are correct and in accordance with the Surveys Act and the Surveyors Act and the regulations made under them.
2. The survey was completed on the 12th day of July, 2022.

August 19, 2022  
Date

*Emmett Ketchum*  
Emmett Ketchum  
Ontario Land Surveyor

**Notes & Legend**

Denotes	
—□—	Survey Monument Planted
—■—	Survey Monument Found
SIB	Standard Iron Bar
IB	Iron Bar
(WIT)	Witness
Meas.	Measured
Acc.	Accepted
(P1)	Registered Plan 4M-356
(P2)	Plan 4R-7616
(P3)	Plan 4R-5468
(P4)	Plan 4R-7367
(P5)	Plan 4R-12072
(P5)	Plan 4R-7593
—OHW—	Overhead Wires
—ULP—	Utility Pole
—AN—	Anchor
—LS—	Light Standard
CSP	Corrugated Steel Pipe
—T/P—	Top of Pipe
—G/M—	Gas Meter
—UTB—	Unidentified Terminal Box
—CLF—	Chain Link Fence
—AC—	Air Conditioner
—WC—	Well Cap
—D—	Diameter
—Elev—	Location of Elevations
—C/L—	Centreline
—P.L.—	Property Line



ASSOCIATION OF ONTARIO  
LAND SURVEYORS  
PLAN SUBMISSION FORM  
2193235

THIS PLAN IS NOT VALID UNLESS  
IT IS AN EMBOSSED ORIGINAL  
COPY ISSUED BY THE SURVEYOR  
IN ACCORDANCE WITH  
REGULATION 1028, SECTION 29 (3).

Bearings are grid, derived from Can-Net 2016 Real Time Network GPS observations and are referenced to the Central Meridian of MTM Zone 9 (76°30' West Longitude) NAD-83 (Original).

For comparison purposes, a rotation of 0°21'20" counter clockwise was applied to the bearings on P1, P2, P3, P4, and P5.

Distances shown on this plan a ground distances and can be converted to grid distances by multiplying by the combined scale factor of 0.999902.

**ELEVATION NOTES**

1. Elevations shown are geodetic and are referred to the CGVD28 geodetic datum.
2. It is the responsibility of the user of this information to verify that the job benchmark has not been altered or disturbed and that it's relative elevation and description agrees with the information shown on this drawing.

**UTILITY NOTES**

1. This drawing cannot be accepted as acknowledging all of the utilities and it will be the responsibility of the user to contact the respective utility authorities for confirmation.
2. A field location of underground plant by the pertinent utility authority is mandatory before any work involving breaking ground, probing, excavating etc.

© Annis, O'Sullivan, Vollebek Ltd. 2022. THIS PLAN IS PROTECTED BY COPYRIGHT!

**ANNIS, O'SULLIVAN, VOLLEBEK LTD.**  
136 Prescott Street, Box 1340  
Kemptville, Ontario K0G 1A0  
Phone: (613) 258-1717 / Fax: (613) 258-4475  
Email: Kemptville@asvlltd.com

Ontario Land Surveyors Job No. K-1007-22 PRI-TEC PTLK11 4M-356 T F