

4

3

2

1

D

D

C

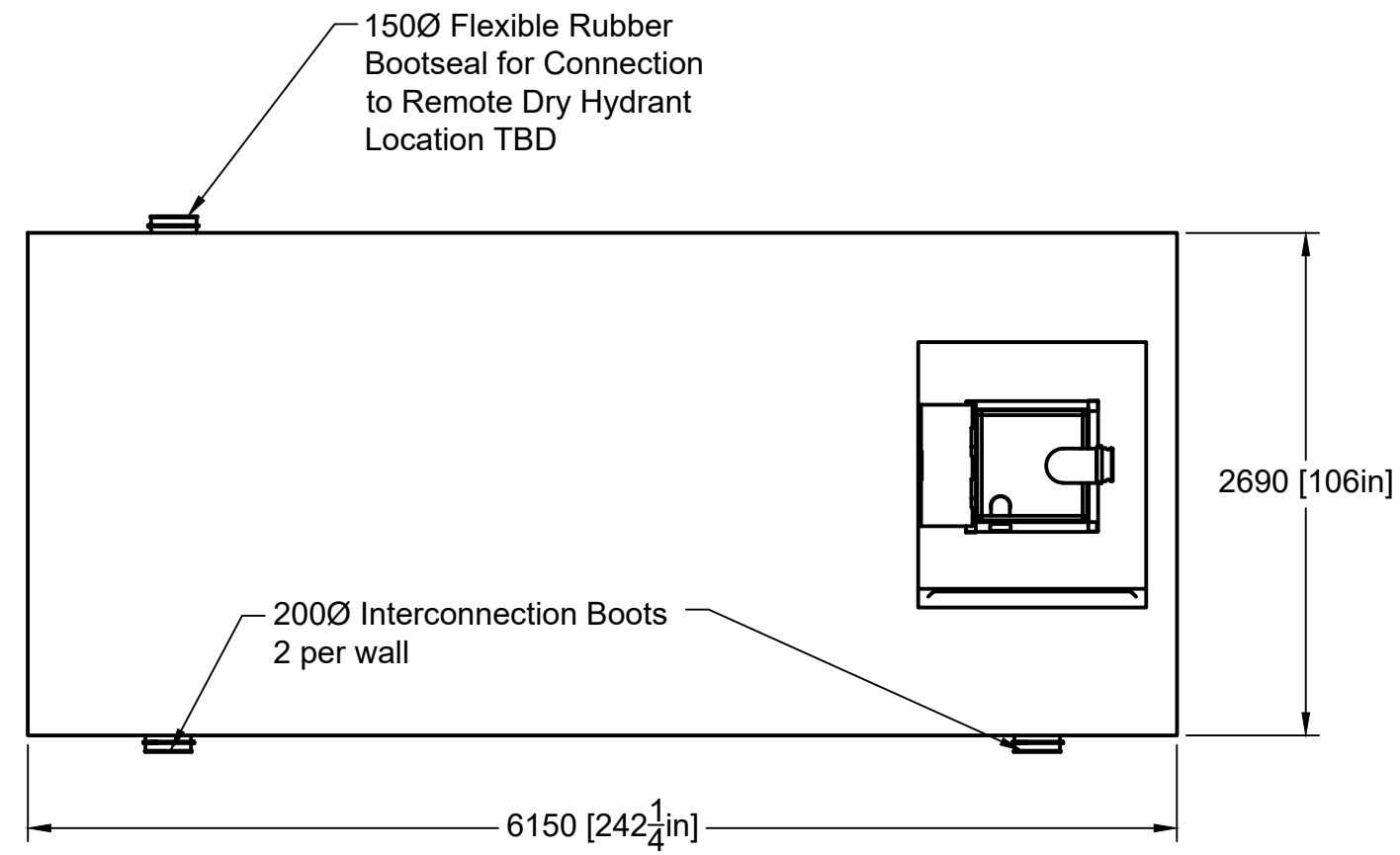
C

B

B

A

A



TOTAL VOLUME: 45000L

CONCRETE: 35MPa WITH 5-8% AIR ENTRAINMENT NON SULPHATE RESISTANT

REINFORCING: GRADE 400W CONFORMING TO CSA G30.18  
15M @ 200mm ON CENTRE EACH WAY  
ADDITIONAL 15M AROUND PERIMETER AT SEAM BETWEEN SECTIONS  
15M x900mm ON DIAGONAL AT EACH CORNER OF LID OPENING

WEIGHT: TOP SECTION 19000KGS  
BOTTOM SECTION 19000KGS  
TOTAL 38000KGS

MAXIMUM BURIAL DEPTH: 1200MM OF GROUND COVER IN AREA OF NON-VEHICULAR TRAFFIC

WATER TIGHTNESS: INNER ROW - CON-SEAL CS-102x1.25 MASTIC SEALANT  
OUTER ROW - CON-SEAL CS-235x.75 BUTYL WATERSTOP  
SEALANT APPLIED ONSITE ACCORDING TO MANUFACTURER'S RECOMMENDED METHOD

PIPE/WALL CONNECTIONS: 200mmØ Rubber Bootseal for Tank Interconnections  
150mmØ Rubber Bootseal for Remote Hydrant Connection

ACCESS OPENINGS:  
PRIMARY TANK: 610X610 CITY OF OTTAWA SPEC FIRE CHUTE FOR FIRETRUCK CONNECTION  
SECONDARY ACCESS (OPTIONAL) :1200x1300 CAST-IN RISER FLANGE WITH 610X610 DRIP PROOF ALUMINUM ACCESS HATCH  
900X1200 OPENING IN DIVIDER WALL FOR ACCESS TO BOTH CHAMBERS FROM ONE ACCESS POINT

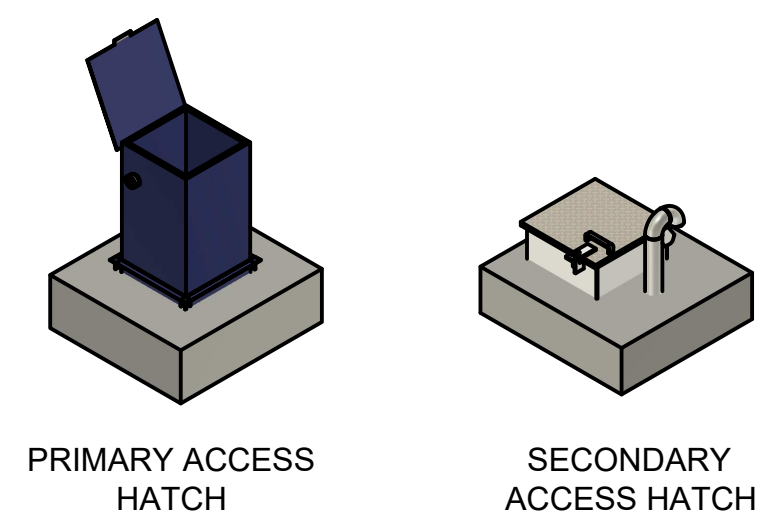
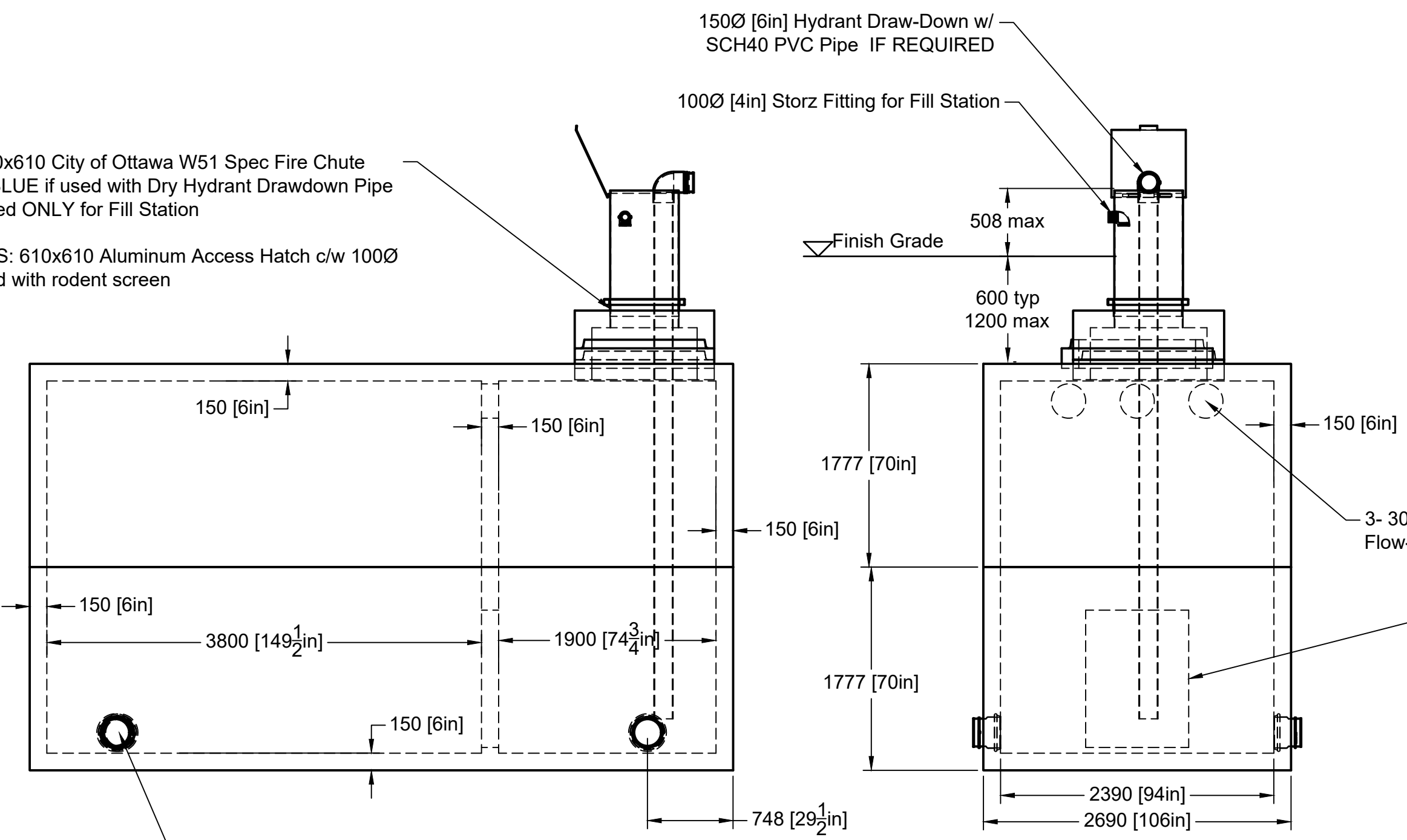
OPTIONAL STAINLESS STEEL BOLT-ON LADDER OPTIONAL

TANK DESIGN CONFORMS TO CSA STANDARD B66-15 WITH A NON-TRAFFIC LOAD ON TOP, AND WITH HEAVY TRUCK LOADING DIRECTLY ADJACENT TO TANK TO ACCOMMODATE FIRE TRUCK TO BE WITHIN 1M OF WATER DRAW-DOWN CHUTE, AS PER FIRE DEPT.

BUOYANCY: TANK TO BE ABLE TO WITHSTAND GROUNDWATER UP 2.0M FROM BOTTOM OF TANK. IF HIGH-GROUNDWATER LEVEL IS IN EXCESS OF THIS, ADDITIONAL BALLASTING BLOCKS WILL BE REQUIRED. ADDITIONAL WATERPROOFING MEASURES AT THE SEAM MAY BE REQUIRED.

PRIMARY TANK: 610x610 City of Ottawa W51 Spec Fire Chute  
- Painted MEDIUM BLUE if used with Dry Hydrant Drawdown Pipe  
- Painted GREY if used ONLY for Fill Station

SECONDARY TANKS: 610x610 Aluminum Access Hatch c/w 100Ø Gooseneck Vent fitted with rodent screen



revision	date	description
r4	2026-06-02	Additional Hatch Details
r3	2024-10-31	Tank loading and Buoyancy Details
r2	2023-06-19	Wall Thickness to 150mm
r1	2021-05-12	Flow-through and Access details

**bb BOYD BROS**  
concrete products

5450 Cuddy St Osgoode, ON K0A 2W0  
tel: (613) 826.2318 fax: (613) 826.3679  
toll free: 888.846.6664  
website: www.boydbrosconcrete.ca  
email: info@boydbrosconcrete.ca

PROJECT		
Boyd Bros Concrete		
TITLE		
45000 Fire Tank		
DRAWN Rob Sanna 2019-07-11 APPROVED		
SIZE	DWG NAME	REV
C	45000 Fire Tank	4
SCALE 1:50	WEIGHT 38000kgs	SHEET 1/1

4

3

2

1