

CLIENT:  
**Mark Nakhle**  
 11784005 Canada Inc.  
 12 Southland Crescent  
 Ottawa ON K1T 0J1

CONSULTANTS  
 ARCHITECTS:  
**P2 concepts**  
 739 ROSEWOOD AVE., UNIT 201  
 OTTAWA, ONTARIO, K1V 6M8

CIVIL ENGINEERS:  
**ARCH-NOVA Design Inc.**  
 45 Banner Road NEPEAN ON K2H 8X5  
 613-702-3403 contact@archnova.ca

- LEGEND
- PROPOSED PRECAST CONCRETE PAVERS TYPE I
  - PROPOSED PRECAST CONCRETE PAVERS TYPE II
  - PROPOSED DECIDUOUS TREE  
30m<sup>3</sup> SOIL VOLUME AT A 1.5m DEPTH
  - PROPOSED SHRUBS
  - PROPOSED SOD
  - PROPOSED RIVERSTONE MULCH
  - EXTENT OF CRITICAL ROOT ZONE
  - EXISTING TREE TO REMAIN
  - EXISTING TREE TO BE REMOVED
  - PROPOSED TREE PROTECTION FENCE

7	REVISED PER CITY COMMENTS	10/29/2025	ML	JL
6	REVISED PER NEW SITE PLAN	02/14/2024	ML	JL
5	RIVERSTONE DELETED FROM REAR YARD	04/11/2023	ML	JL
4	REVISED PER NEW SITE PLAN	04/06/2023	ML	JL
3	REVISED PER NEW SITE PLAN	03/23/2023	ML	JL
2	REVISED PER CITY COMMENTS	09/21/2022	ML	JL
1	ISSUED FOR DISCUSSION AND REVIEW	08/17/2022	ML	JL
No.	Issue	Date	ML	CK

**JAMES B. LENNOX & ASSOCIATES INC.**  
 LANDSCAPE ARCHITECTS  
 3332 CARLING AVE. OTTAWA, ONTARIO K2H 5A8  
 TEL: (613) 722-5168 FAX: (866) 343-3942

PROJECT  
 PROPOSED 17 UNIT RESIDENTIAL BUILDING  
 2458 CLEROUX CRESCENT, OTTAWA ON

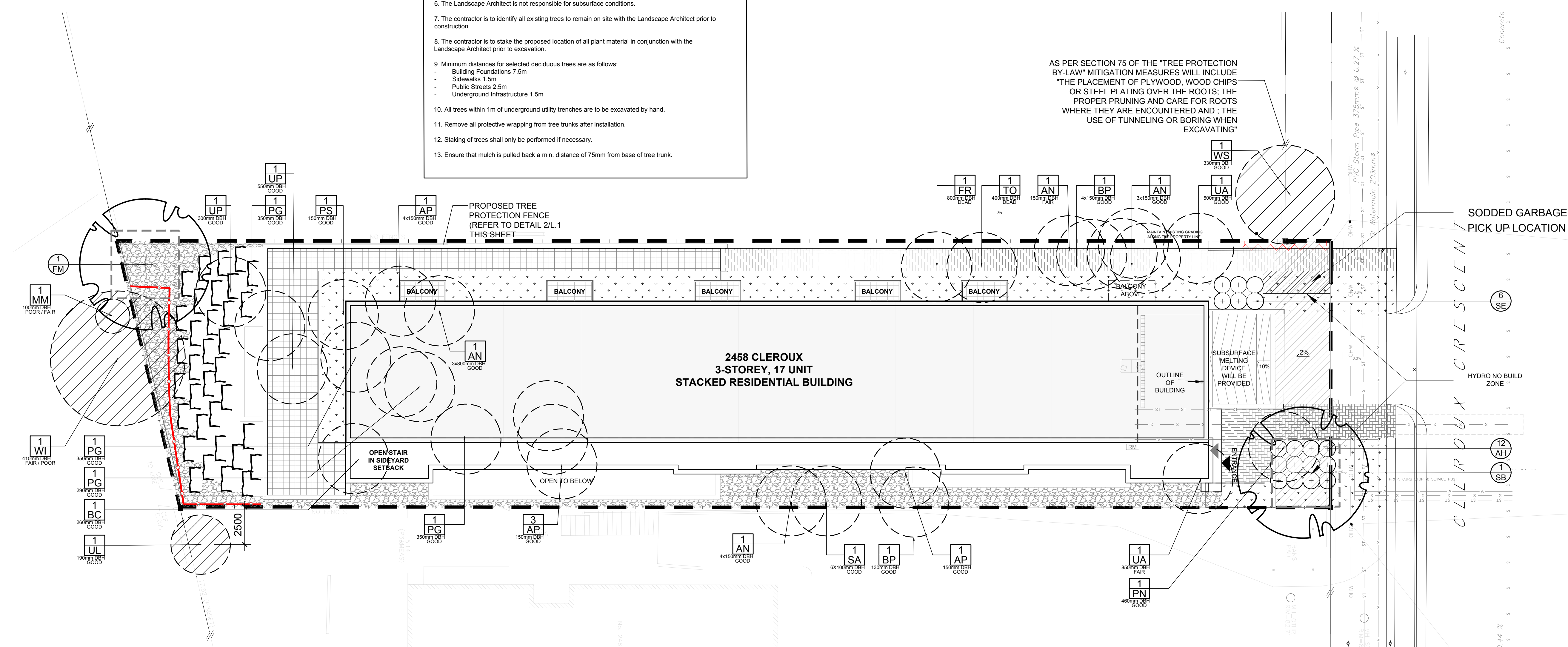
DRAWING  
 TREE CONSERVATION REPORT &  
 LANDSCAPE PLAN

STAMP  
  
 SCALE  
 AS SHOWN  
 START DATE  
 MARCH 2022  
 PROJECT NO.  
 22MIS2223

PROJECT NORTH  
  
 DRAWING NO.  
**L.1**  
 PLOT SIZE ARCH-D

- GENERAL NOTES:**
- It is the responsibility of the appropriate contractor or official to report any errors, omissions or discrepancies on this plan with actual site conditions to the Landscape Architect before proceeding with construction.
  - The contractor is to notify all utility companies and authorities prior to any excavation and ascertain locations of underground services.
  - The contractor is to reinstate all areas and items damaged as a result of construction activity.
  - The contractor is to comply with all pertinent codes and by-laws.
  - The contractor is to maintain a positive surface run-off throughout the entire construction period.
  - The Landscape Architect is not responsible for subsurface conditions.
  - The contractor is to identify all existing trees to remain on site with the Landscape Architect prior to construction.
  - The contractor is to stake the proposed location of all plant material in conjunction with the Landscape Architect prior to excavation.
  - Minimum distances for selected deciduous trees are as follows:
    - Building Foundations 7.5m
    - Sidewalks 1.5m
    - Public Streets 2.5m
    - Underground Infrastructure 1.5m
  - All trees within 1m of underground utility trenches are to be excavated by hand.
  - Remove all protective wrapping from tree trunks after installation.
  - Staking of trees shall only be performed if necessary.
  - Ensure that mulch is pulled back a min. distance of 75mm from base of tree trunk.

AS PER SECTION 75 OF THE "TREE PROTECTION BY-LAW" MITIGATION MEASURES WILL INCLUDE "THE PLACEMENT OF PLYWOOD, WOOD CHIPS OR STEEL PLATING OVER THE ROOTS; THE PROPER PRUNING AND CARE FOR ROOTS WHERE THEY ARE ENCOUNTERED AND ; THE USE OF TUNNELING OR BORING WHEN EXCAVATING"



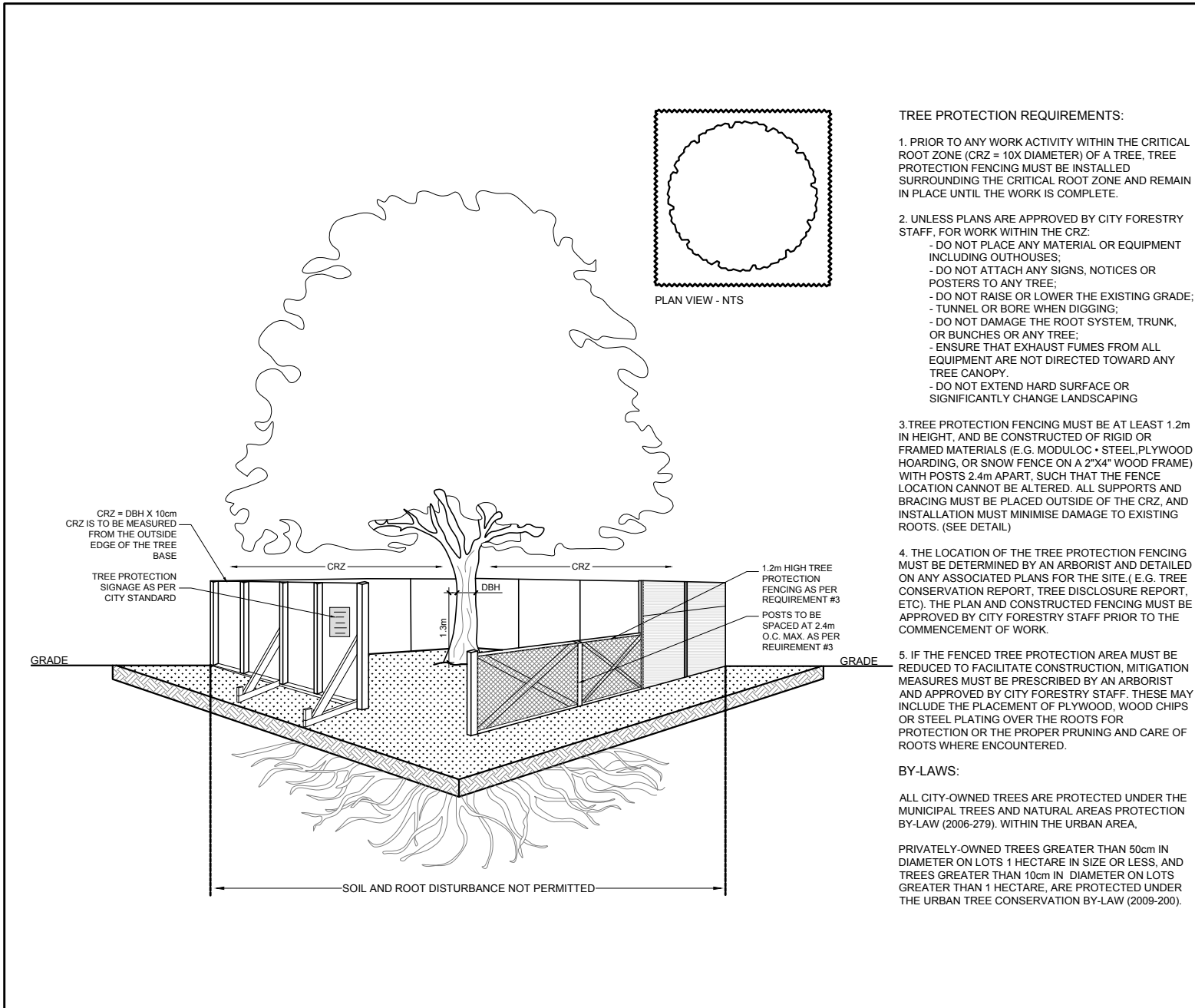
1 TREE CONSERVATION REPORT & LANDSCAPE PLAN  
 SCALE 1:150

**EXISTING TREE LIST**

KEY	QTY	BOTANICAL NAME	COMMON NAME	SIZE	CONDITION	REMARKS	OWNERSHIP	QTY KEY
AN	4	<i>Acer negundo</i>	Manitoba Maple	150-800mm DBH	FAIR-GOOD	To be removed	2458 Cleroux Crescent	
AP	5	<i>Acer platanoides</i>	Norway Maple	150mm DBH	GOOD	To be removed	2458 Cleroux Crescent	
BC	1	<i>Prunus serotina</i>	Black Cherry	250mm DBH	GOOD	To be removed	2458 Cleroux Crescent	
BP	1	<i>Betula papyrifera</i>	White Birch	130-150mm DBH	GOOD	To be removed	2458 Cleroux Crescent	
FR	1	<i>Fraxinus americana</i>	White Ash	800mm DBH	DEAD	To be removed	2458 Cleroux Crescent	
MM	1	<i>Acer negundo</i>	Manitoba Maple	100mm DBH	FAIR / POOR	To remain	NCC	
PG	4	<i>Picea glauca</i>	White Spruce	290-350mm DBH	GOOD	To be removed	2458 Cleroux Crescent	
PN	1	<i>Pinus nigra</i>	Austrian Pine	450mm DBH	GOOD	To be removed	2458 Cleroux Crescent	
PS	1	<i>Pinus strobus</i>	White Pine	150mm DBH	GOOD	To be removed	2458 Cleroux Crescent	
SA	1	<i>Salix spp.</i>	Willow	6x100mm DBH	GOOD	To be removed	2458 Cleroux Crescent	
TO	1	<i>Thuja occidentalis</i>	White Cedar	400mm DBH	DEAD	To be removed	2458 Cleroux Crescent	
UA	2	<i>Ulmus americana</i>	American Elm	500-850mm DBH	FAIR-GOOD	To be removed	2458 Cleroux Crescent	
UL	1	<i>Ulmus pumila</i>	Siberian Elm	190mm DBH	GOOD	To remain	2458 Cleroux Crescent	
UP	2	<i>Ulmus pumila</i>	Siberian Elm	300-550mm DBH	GOOD	To be removed	2458 Cleroux Crescent	
WI	1	<i>Salix spp.</i>	Willow	410mm DBH	FAIR / GOOD	To remain	NCC	
WS	1	<i>Picea glauca</i>	White Spruce	330mm DBH	GOOD	To remain	2444 Cleroux Crescent	

**PROPOSED PLANT LIST**

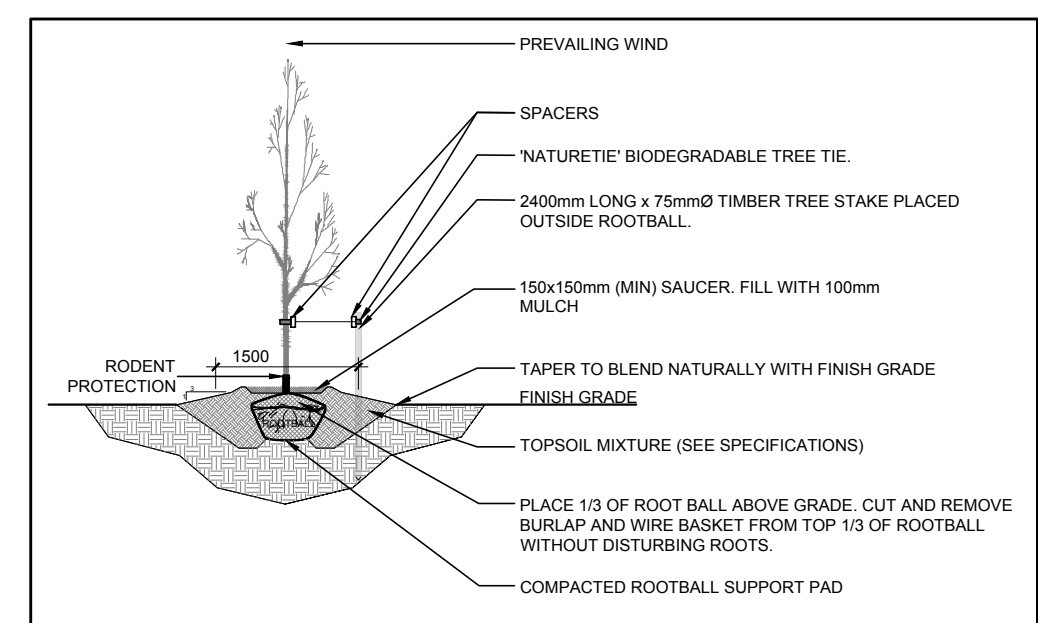
KEY	QTY	BOTANICAL NAME	COMMON NAME	SIZE	CONDITION	REMARKS
FM	1	<i>Acer x freemanii</i>	Freeman's Maple	60mm cal.	B&B	Single leader
SB	1	<i>Amelanchier canadensis</i>	Serviceberry	60mm cal.	B&B	
<b>SHRUBS</b>						
AH	12	<i>Hydrangea arborescens</i> 'Annabelle'	Annabelle Hydrangea	1 gallon pot	Potted	Space 1000mm o.c.
SE	6	<i>Sorbaria sorbifolia</i> 'Sem'	Sem False Spirea	600mm ht.	Potted	Space 1000mm o.c.



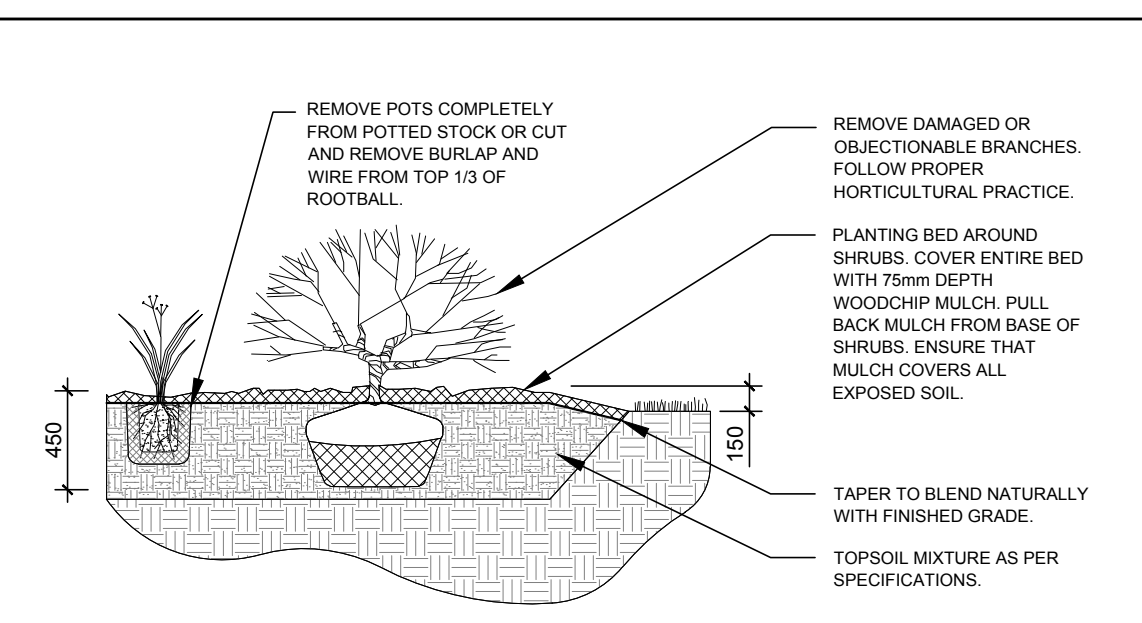
2 TREE PROTECTION FENCE  
 SCALE: NTS

**40-YEAR CANOPY COVER CALCULATION**  
 2458 CLEROUX CRESCENT

1,391 m<sup>2</sup> site area  
 (1) small deciduous tree proposed (7m<sup>2</sup>), 1 large deciduous tree proposed (154m<sup>2</sup>)  
 =161m<sup>2</sup> canopy cover =11.6% canopy cover  
 \*Large deciduous tree calculated at 14m spread, small deciduous tree calculated at 3m spread



3 DECIDUOUS TREE PLANTING  
 SCALE: NTS



4 SHRUB PLANTING  
 SCALE: NTS

D07-12-22-0144